

REC'D 4-3-03 SML/ML

Lee Surveying and Mapping Co., Inc.

Land Surveys • Topography • Subdivisions • Construction Layout

117 N. Madriver St.
Bellefontaine OH 43311



Phone: (937) 593-7335
Fax: (937) 593-7444

DYE 9.993 ACRES

Lying in Fractional Section 13, Town 1, Range 8, Pleasant Township, Logan County, Ohio.

Being out of the Betty Ann Dye original 90.27 acre tract as deeded and described in Official Record 205, Page 458 of the Logan County Records of Deeds and being more particularly described as follows:

Beginning at a 5/8 inch iron rod found in a monument box at the southwest corner of Fractional Section 13, at the the intersection of the center-line of Township Road 75 and the south line of Pleasant Township.

THENCE, with the west line of Fractional Section 13 and the center-line of Township Road 75 (40 feet wide), N 3°-29'-49"W, a distance of 1318.59 feet to a railroad spike set at the TRUE POINT OF BEGINNING.

THENCE, with the west line of Fractional Section 13 and the center-line of Towhship Road 75, N 3°-29'-49"W, a distance of 40.62 feet to railroad spike found.

THENCE, with the south line of the James R. Shoe 1.85 acre tract (O.R. 70, Pg. 891), N 86°-34'-05"E, a distance of 266.57 feet to a 5/8 inch iron rod found, passing a 5/8 inch iron rod set at 20.00 feet.

THENCE, with the east line of the said 1.85 acre tract, N 01°-32'-14"E, a distance of 289.84 feet to a 5/8 inch iron rod found.

THENCE, with the south line of the Shirley Ann Allen 76.9 acre tract (O.R. 570, Pg. 563, Tract III), N 86°-34'-05"E, a distance of 1198.00 feet to a 5/8 inch iron rod set.

THENCE, S 12°-02'-28"E, a distance of 355.50 feet to a 5/8 inch iron rod set.

THENCE, S 87°-23'-22"W, a distance of 1543.00 feet to the point of beginning, passing a 5/8 inch iron rod set at 1522.96 feet.

Containing 9.993 acre, of which 0.019 acre is within the highway right-of-way.

The basis for bearings is the west line of Fractional Section 13, being N 3°-29'-49"W, and all other bearings are from angles and distances measured in a field survey by Lee Surveying and Mapping Co., Inc. on March 20, 2003.

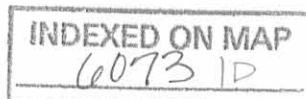
Description prepared by:



ORIGINAL STAMP IN GREEN

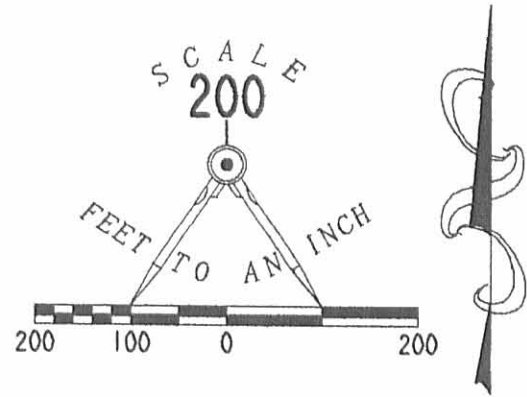
Jeffrey I. Lee
Professional Surveyor 6359
March 26, 2003

L-3548



LEGEND:

- ⊕ RAILROAD SPIKE SET
- ⊗ RAILROAD SPIKE FOUND
- 5/8 INCH IRON ROD SET
- 5/8 INCH IRON ROD FOUND
- ⊠ 5/8 INCH IRON ROD FOUND IN A MONUMENT BOX

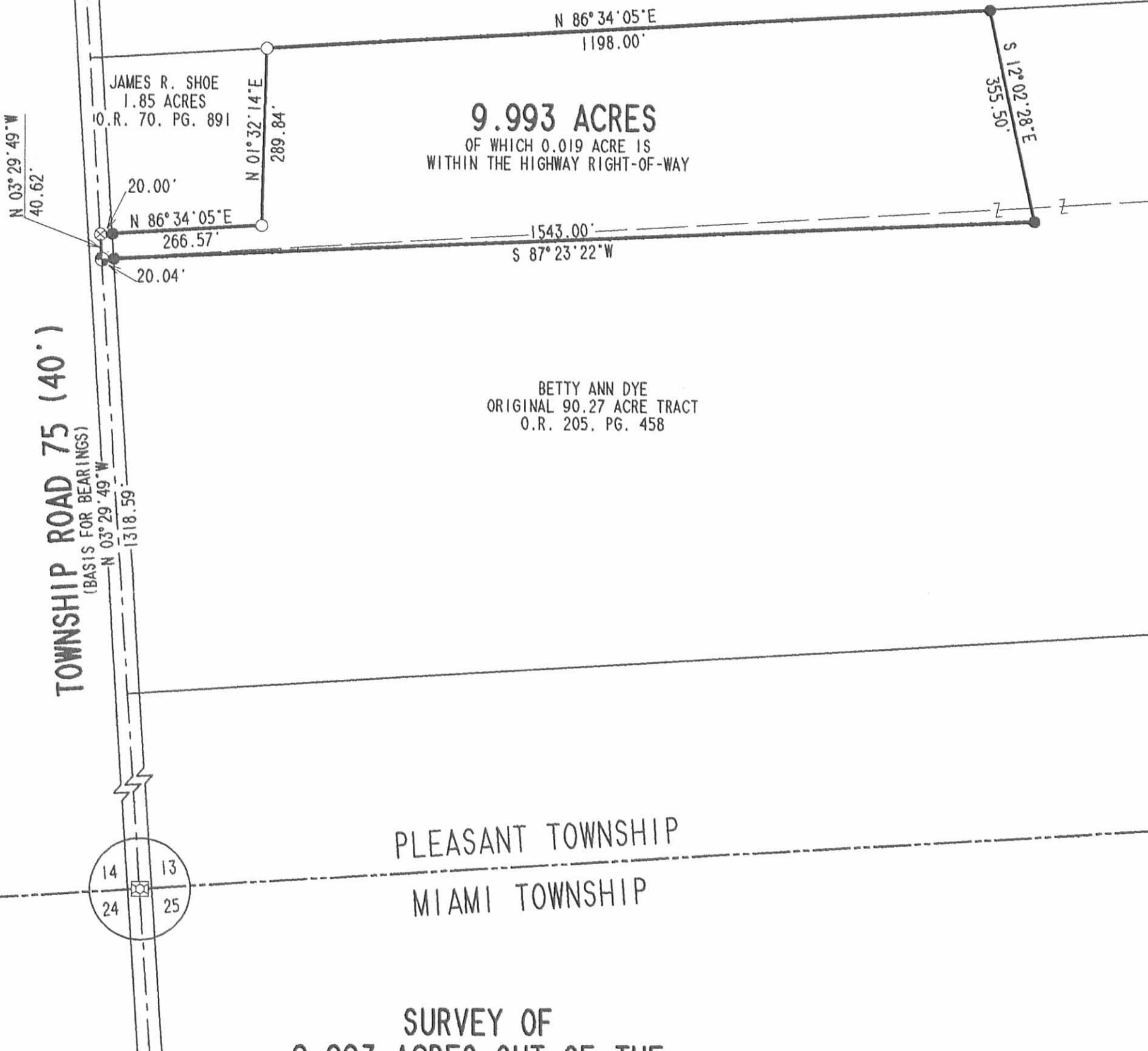


SHIRLEY ANN ALLEN
76.9 ACRES
O.R. 570, PG. 563
TRACT 111

JAMES R. SHOE
1.85 ACRES
O.R. 70, PG. 891

9.993 ACRES
OF WHICH 0.019 ACRE IS
WITHIN THE HIGHWAY RIGHT-OF-WAY

BETTY ANN DYE
ORIGINAL 90.27 ACRE TRACT
O.R. 205, PG. 458



PLEASANT TOWNSHIP
MIAMI TOWNSHIP

SURVEY OF
9.993 ACRES OUT OF THE
BETTY ANN DYE
ORIGINAL 90.27 ACRE TRACT
OFFICIAL RECORD 205, PAGE 458
FRACTIONAL SECTION 13, TOWN 1, RANGE 8
PLEASANT TOWNSHIP
LOGAN COUNTY, OHIO

SURVEYED BY:

Jeffrey I. Lee
JEFFREY I. LEE
PROFESSIONAL SURVEYOR 6359
MARCH 20, 2003



ORIGINAL STAMP IN GREEN

2 WORKING DAYS
BEFORE YOU DIG
CALL TOLL FREE **800-362-2764**
OHIO UTILITIES PROTECTION SERVICE.

INDEXED ON MAP
6073 IP

COPYRIGHT 2003 BY:
LEE SURVEYING & MAPPING CO., INC.
117 North Madriver Street
BELLEFONTAINE, OHIO 43311
(937) 593-7335

D 410

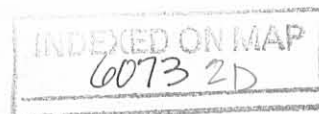
CMBARGA

L-3548-3 ✓

SHOE SURVEY

The following described real estate situated in Pleasant Township, Logan County, Ohio and being part of Fractional Section 13, Township 1, Range 8, M.R.S. and more particularly described as follows:

Commencing at a stone in the center of Pleasant Township Road No.75 and in the west line of said Fractional~~at~~ Section 13, said stone being Station 24 + 26.5 as shown in Logan County Engineer's Field Book No.589 page 46. Thence with the centerline of T.R.75 N.1°27'E. 686.8 feet to a railroad spike, said railroad spike being the beginning point of this description. Thence with said centerline of T.R.75 N.1°27'E. 288.8 feet to a railroad spike at southwest corner of Manferd C. Barga's 76.90 acre tract, said railroad spike also being the northwest corner of Earl Dye's 28.98 acre tract. Thence with the south line of the said Barga tract S.88°33'E. 292.0 feet to an iron pin. Thence S.6°33'W. 290.0 feet to an iron pin. Thence N.88°33'W. 266.5 feet to the place of beginning, containing 1.85 acres more or less and being taken from Earl Dye's 28.98 acre tract.



Manferd C. Barga 76.90 Ac

Spike Set

$5.88^{\circ}33'E$

292.0'

Iron Pin Set

SHOE SURVEY
S.13T.1R.8
Pleasant Township
Logan County, Ohio
April 13, 1977



288.8'

$N.1^{\circ}27'E$

1.85 Ac.

290.0'
 $N.6^{\circ}33'E$

6073 28

INDEXED ON MAP

Earl Dye
28.98 Ac
- 1.85 Ac
27.13 Ac

Spike Set

266.5'

$N.88^{\circ}33'W$

Iron pin set

686.8'

Q T.R. #75

Surveyed By: Richard A. Bruce
SIT # 1581

Scale 1" = 50'

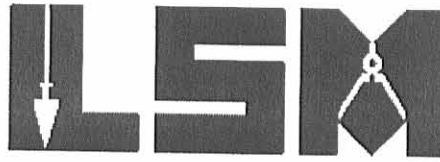
Stone Found Sta 24+26.5 (F.B. 589, p.46)

REVID 10-8-07 SMM OK

Lee Surveying and Mapping Co., Inc.

Land Surveys • Topography • Subdivisions • Construction Layout

117 N. Madriver St.
Bellefontaine OH 43311



Phone: (937) 593-7335
Fax: (937) 593-7444

DYE 30.532 ACRES

Lying in Fractional Section 13, Town 1, Range 8, Pleasant Township, Logan County, Ohio.

Being out of the Betty Ann Dye 63.14 acre tract and 27.13 acre tract as deeded and described in Official Record 630, Page 310 of the Logan County Records of Deeds and being more particularly described as follows:

Commencing on a stone found on the west line of Fractional Section 13 at center-line Station 43+31 (Logan County Engineer's Field Book 589, Pg. 47) on the center-line of Township Road 75.

THENCE, with the west line of Fractional Section 13 and the center-line of Township Road 75 (40 feet wide), S 0°-49'-29"E, a distance of 978.93 feet to a MAG nail found.

THENCE, with the south line of the Shirley Ann Allen 76.9 acre tract (O.R. 570, Pg. 563, Tract III), N 89°-14'-16"E, a distance of 2587.83 feet to a 5/8 inch iron rod set at the TRUE POINT OF BEGINNING.

THENCE, with the south line of the said 76.9 acre tract, N 89°-14'-16"E, a distance of 1302.74 feet to a point on the west bank of the Great Miami River, passing a 5/8 inch iron rod found at 1235.87 feet, a railroad spike found at 1266.20 feet and a 5/8 inch iron rod found at 1296.53 feet.

THENCE, with the west bank of the Great Miami River, the following three courses:

S 8°-19'-57"W, a distance of 349.15 feet to a point, referenced by a 5/8 inch iron rod set S 87°-25'-04"W, a distance of 10.00 feet.

S 2°-34'-56"E, a distance of 433.19 feet to a point, referenced by a 5/8 inch iron rod set S 87°-25'-04"W, a distance of 10.00 feet.

S 22°-13'-58"E, a distance of 284.12 feet to a point.

THENCE, with the north line of the Elizabeth Ann Cook, as trustee of the Elizabeth Ann Cook Trust uad the 20th day of May, 1997, 56 acre tract (O.R. 370, Pg. 215, Tract VIII), S 89°-14'-16"W, a distance of 1365.30 feet to a 5/8 inch iron rod set, passing a 5/8 inch iron rod set at 18.82 feet, a MAG spike set at 52.12 feet and a 5/8 inch iron rod set at 85.42 feet.

THENCE, N 0°-45'-44"W, a distance of 1042.14 feet to the point of beginning.

Containing 30.532 acres, of which 1.462 acres are within the highway right-of-way.

The basis for bearings is the west line of Fractional Section 13, being S 0°-49'-29"E, and all other bearings are from angles and distances measured in a field survey by Lee Surveying and Mapping Co., Inc. on October 3, 2007.



ORIGINAL STAMP IN GREEN

Description prepared by:

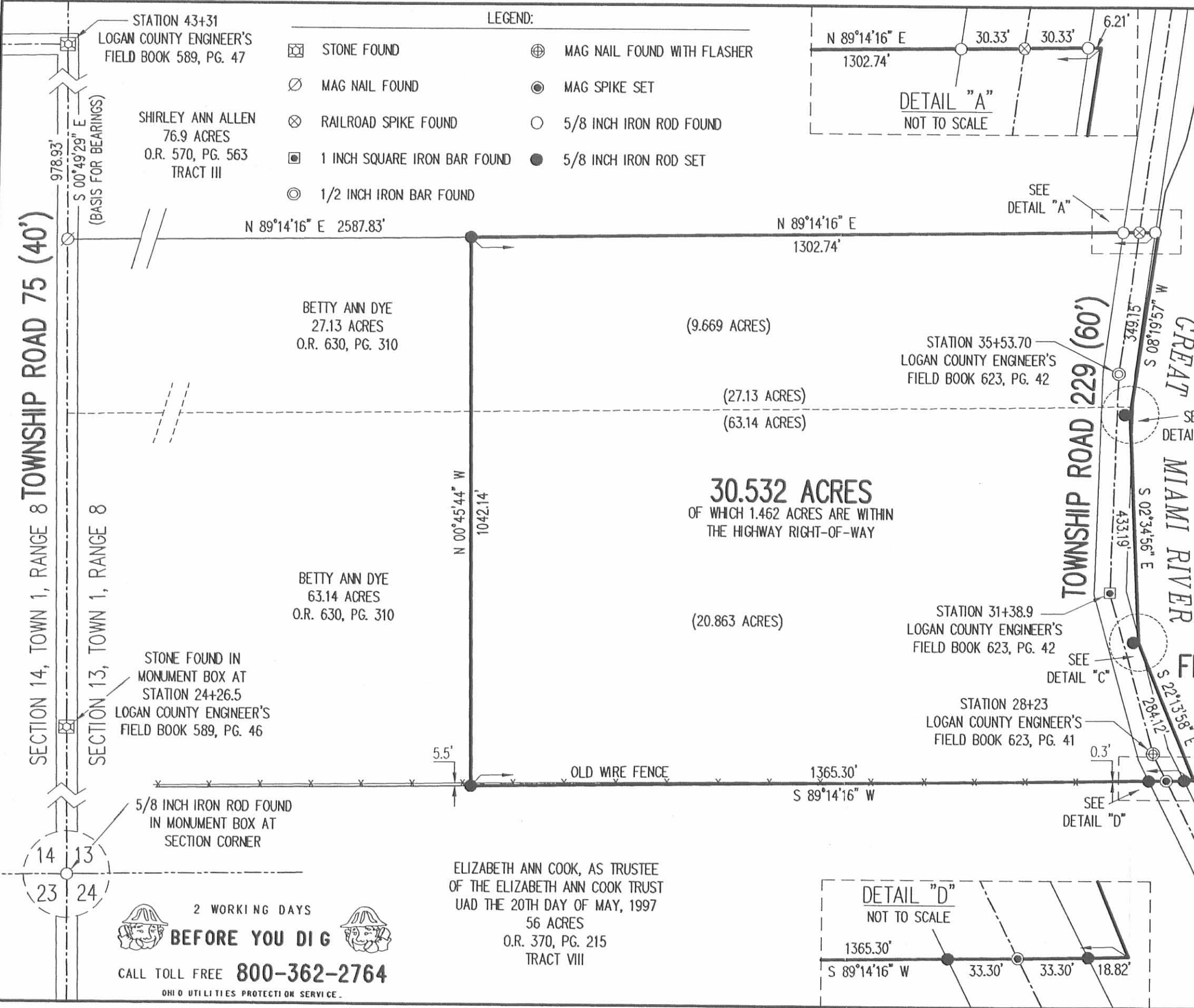
A handwritten signature in black ink, appearing to read 'William K. Bruce'.

William K. Bruce
Professional Surveyor 7437
October 4, 2007



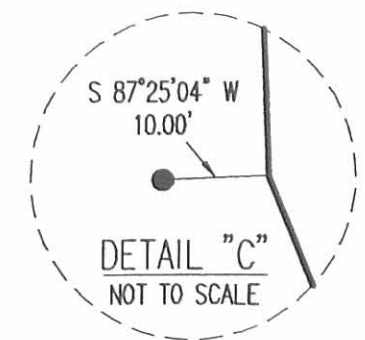
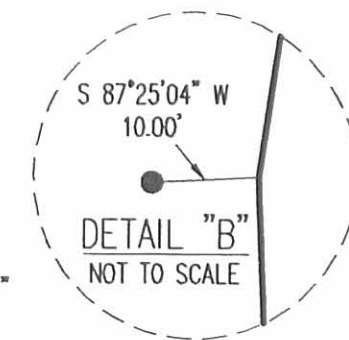
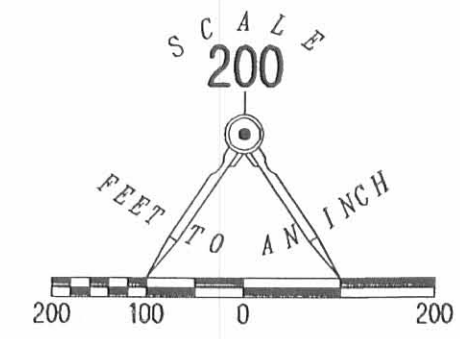
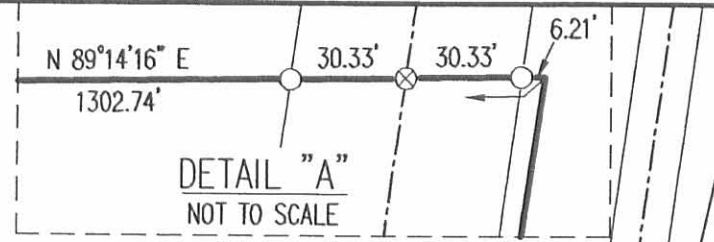
4526087

REV'D 10-8-07 S.M.Y.O.K.



LEGEND:

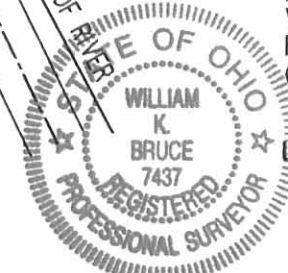
- ☒ STONE FOUND
- ⊗ MAG NAIL FOUND
- ⊗ RAILROAD SPIKE FOUND
- 1 INCH SQUARE IRON BAR FOUND
- ⊙ 1/2 INCH IRON BAR FOUND
- ⊕ MAG NAIL FOUND WITH FLASHER
- MAG SPIKE SET
- 5/8 INCH IRON ROD FOUND
- 5/8 INCH IRON ROD SET



SURVEY OF 30.532 ACRES OUT OF THE BETTY ANN DYE 63.14 ACRE TRACT AND 27.13 ACRE TRACT OFFICIAL RECORD 630, PAGE 310 FRACTIONAL SECTION 13, TOWN 1, RANGE 8 PLEASANT TOWNSHIP LOGAN COUNTY, OHIO

SURVEYED BY:

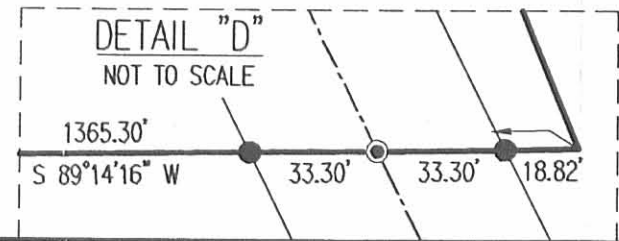
William K. Bruce
 WILLIAM K. BRUCE
 PROFESSIONAL SURVEYOR 7437
 OCTOBER 3, 2007



ORIGINAL STAMP IN GREEN

COPYRIGHT 2007 BY:
LEE SURVEYING & MAPPING CO., INC.
 117 North Madriver Street
 BELLEFONTAINE, OHIO 43311
 (937) 593-7335
 surveys@lsminc.us
 KSS D1007 4526097 L-4526-3

ELIZABETH ANN COOK, AS TRUSTEE
 OF THE ELIZABETH ANN COOK TRUST
 UAD THE 20TH DAY OF MAY, 1997
 56 ACRES
 O.R. 370, PG. 215
 TRACT VIII



2 WORKING DAYS
BEFORE YOU DIG
 CALL TOLL FREE **800-362-2764**
 OHIO UTILITIES PROTECTION SERVICE

INDEXED ON MAP
 0013 3P

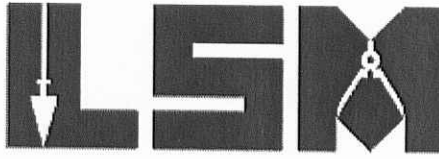
Lee Surveying and Mapping Co., Inc.

4-18-13



Land Surveys • Topography • Subdivisions • Construction Layout

117 N. Madriver St.
Bellefontaine OH 43311



Phone: (937) 593-7335
Fax: (937) 593-7444
surveys@lsminc.us

BRUEGGERT, JR. 11.180 ACRES

Lying in Fractional Section 13, Town 1, Range 8, Pleasant Township, Logan County, Ohio.

Being out of the Donald M. Brueggert, Jr., 30.532 acre tract as deeded and described in Official Record 893, Page 952 of the Logan County Records of Deeds and being more particularly described as follows:

Commencing on a stone found on the west line of Fractional Section 13 at center-line Station 43+31 (Logan County Engineer's Field Book 589, Pg. 47) on the center-line of Township Road 75.

THENCE, with the west line of Fractional Section 13 and the center-line of Township Road 75 (40 feet wide), S 0°-49'-29"E, a distance of 978.93 feet to a MAG nail found.

THENCE, with the south line of the Shirley Ann Allen 76.9 acre tract (O.R. 570, Pg. 563, Tract III), N 89°-14'-16"E, a distance of 2587.83 feet to a 5/8 inch iron rod found at the TRUE POINT OF BEGINNING.

THENCE, with the south line of the said 76.9 acre tract, N 89°-14'-16"E, a distance of 1302.74 feet to a point on the west bank of the Great Miami River, passing a 5/8 inch iron rod found at 1235.87 feet, a railroad spike found at 1266.20 feet and a 5/8 inch iron rod found at 1296.53 feet.

THENCE, with the west bank of the Great Miami River, the following two courses:

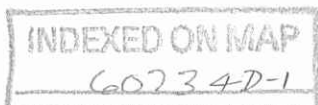
S 8°-19'-57"W, a distance of 349.15 feet to a point, referenced by a 5/8 inch iron rod found bearing S 87°-25'-04"W, a distance of 10.00 feet.

S 2°-34'-56"E, a distance of 60.51 feet to a point.

THENCE, S 89°-32'-03"W, a distance of 906.93 feet to a 5/8 inch iron rod set, passing a MAG nail set at 28.96 feet and a 5/8 inch iron rod set at 58.98 feet.

THENCE, N 03°-45'-11"W, a distance of 68.27 feet to a 5/8 inch iron rod set.

THENCE, N 89°-37'-32"W, a distance of 339.04 feet to a 5/8 inch iron rod set.



Lee Surveying and Mapping Co., Inc.

Land Surveys • Topography • Subdivisions • Construction Layout

117 N. Madriver St.
Bellefontaine OH 43311



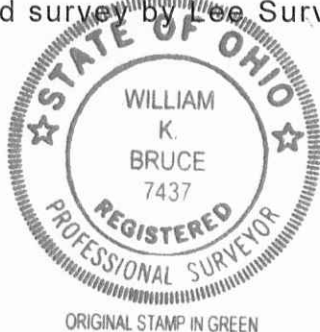
Phone: (937) 593-7335
Fax: (937) 593-7444
surveys@lsminc.us

THENCE, with the east line of the Jonas J. Wagler 49.745 acre tract (O.R. 893, Pg. 990), N 0°-45'-44"W, a distance of 325.65 feet to the point of beginning.

Containing 11.180 acres, of which 0.554 acre is within the highway right-of-way.

Property is subject to any and all previous easements and rights-of-way of record.

The basis for bearings is the west line of Fractional Section 13, being S 0°-49'-29" E, and all other bearings are from angles and distances measured in a field survey by Lee Surveying and Mapping Co., Inc. on April 15, 2013.

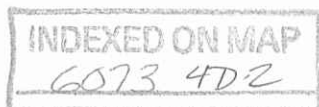


Description prepared by:

A handwritten signature in black ink that reads 'William K. Bruce'.

William K. Bruce
Professional Surveyor 7437
April 16, 2013

45260413



Lee Surveying and Mapping Co., Inc.



APPROVED

Land Surveys • Topography • Subdivisions • Construction Layout

4-18-13

117 N. Madriver St.
Bellefontaine OH 43311



Phone: (937) 593-7335
Fax: (937) 593-7444
surveys@lsminc.us

BRUEGGERT, JR. 11.018 ACRES

Lying in Fractional Section 13, Town 1, Range 8, Pleasant Township, Logan County, Ohio.

Being out of the Donald M. Brueggert, Jr., 30.532 acre tract as deeded and described in Official Record 893, Page 952 of the Logan County Records of Deeds and being more particularly described as follows:

Commencing on a stone found on the west line of Fractional Section 13 at center-line Station 43+31 (Logan County Engineer's Field Book 589, Pg. 47) on the center-line of Township Road 75.

THENCE, with the west line of Fractional Section 13 and the center-line of Township Road 75 (40 feet wide), S 0°-49'-29"E, a distance of 978.93 feet to a MAG nail found.

THENCE, with the south line of the Shirley Ann Allen 76.9 acre tract (O.R. 570, Pg. 563, Tract III), N 89°-14'-16"E, a distance of 2587.83 feet to a 5/8 inch iron rod found.

THENCE, with the east line of the Jonas J. Wagler 49.745 acre tract (O.R. 893, Pg. 990), S 0°-45'-44"E, a distance of 325.65 feet to a 5/8 inch iron rod set at the TRUE POINT OF BEGINNING

THENCE, S 89°-37'-32"E, a distance of 339.04 feet to a 5/8 inch iron rod set.

THENCE, S 03°-45'-11"E, a distance of 68.27 feet to a 5/8 inch iron rod set.

THENCE, N 89°-32'-03"E, a distance of 906.93 feet to a point on the west bank of the Great Miami River, passing a 5/8 inch iron rod set at 847.95 feet and a MAG nail set at 877.97 feet.

THENCE, with the west bank of the Great Miami River, S 2°-34'-56"E, a distance of 360.54 feet to a point.

THENCE, with the center of a creek, the following four courses:

S 86°-43'-10"W, a distance of 851.58 feet to a point, passing a MAG nail set at 31.00 feet. Said point referenced by a 5/8 inch iron rod set bearing N 03°-25'-47"E, a distance of 13.98 feet.

INDEXED ON MAP

60734D-3

Lee Surveying and Mapping Co., Inc.

Land Surveys • Topography • Subdivisions • Construction Layout

117 N. Madriver St.
Bellefontaine OH 43311



Phone: (937) 593-7335
Fax: (937) 593-7444
surveys@lsminc.us

N 64°-13'-59"W, a distance of 167.27 feet to a point, referenced by a 5/8 inch iron rod set bearing N 28°-39'-30"E, a distance of 18.32 feet.

N 80°-26'-16"W, a distance of 185.81 feet to a point, referenced by a 5/8 inch iron rod set bearing N 01°-27'-47"E, a distance of 9.30 feet.

N 71°-26'-11"W, a distance of 82.34 feet to a point.

THENCE, with the east line of the aforesaid 49.745 acre tract, N 00°-45'-44"W, a distance of 342.10 feet to the point of beginning, passing a 5/8 inch iron rod set at 11.00 feet.

Containing 11.018 acres, of which 0.502 acre is within the highway right-of-way.

Property is subject to any and all previous easements and rights-of-way of record.

The basis for bearings is the west line of Fractional Section 13, being S 0°-49'-29" E, and all other bearings are from angles and distances measured in a field survey by Lee Surveying and Mapping Co., Inc. on April 15, 2013.



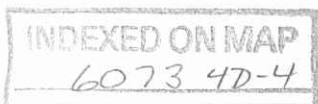
ORIGINAL STAMP IN GREEN

Description prepared by:

A handwritten signature in black ink that reads 'William K. Bruce'.

William K. Bruce
Professional Surveyor 7437
April 16, 2013

45260413



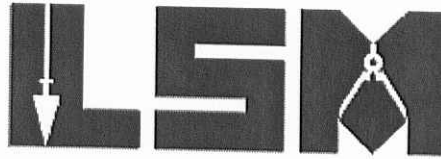
Lee Surveying and Mapping Co., Inc.



Land Surveys • Topography • Subdivisions • Construction Layout

4-18-13

117 N. Madriver St.
Bellefontaine OH 43311



Phone: (937) 593-7335
Fax: (937) 593-7444
surveys@lsminc.us

BRUEGGERT, JR. 8.334 ACRES

Lying in Fractional Section 13, Town 1, Range 8, Pleasant Township, Logan County, Ohio.

Being out of the Donald M. Brueggert, Jr., 30.532 acre tract as deeded and described in Official Record 893, Page 952 of the Logan County Records of Deeds and being more particularly described as follows:

Commencing on a stone found on the west line of Fractional Section 13 at center-line Station 43+31 (Logan County Engineer's Field Book 589, Pg. 47) on the center-line of Township Road 75.

THENCE, with the west line of Fractional Section 13 and the center-line of Township Road 75 (40 feet wide), S 0°-49'-29"E, a distance of 978.93 feet to a MAG nail found.

THENCE, with the south line of the Shirley Ann Allen 76.9 acre tract (O.R. 570, Pg. 563, Tract III), N 89°-14'-16"E, a distance of 2587.83 feet to a 5/8 inch iron rod found.

THENCE, with the east line of the Jonas J. Wagler 49.745 acre tract (O.R. 893, Pg. 990), S 0°-45'-44"E, a distance of 667.75 feet to a point at the TRUE POINT OF BEGINNING, passing 5/8 inch iron rods set at 325.65 feet and 656.75 feet.

THENCE, with the center of a creek, the following four courses

S 71°-26'-11"E, a distance of 82.34 feet to a point, referenced by a 5/8 inch iron rod set bearing N 01°-27'-47"E, a distance of 9.30 feet.

S 80°-26'-16"E, a distance of 185.81 feet to a point, referenced by a 5/8 inch iron rod set bearing N 28°-39'-30"E, a distance of 18.32 feet.

S 64°-13'-59"E, a distance of 167.27 feet to a point, referenced by a 5/8 inch iron rod set bearing N 03°-25'-47"E, a distance of 13.98 feet.

N 86°-43'-10"E, a distance of 851.58 feet to a point on the west bank of the Great Miami River, passing a MAG nail set at 820.58 feet.

THENCE, with the west bank of the Great Miami River, the following two courses:

INDEXED ON MAP
6073 4D5

Lee Surveying and Mapping Co., Inc.

Land Surveys • Topography • Subdivisions • Construction Layout

117 N. Madriver St.
Bellefontaine OH 43311



Phone: (937) 593-7335
Fax: (937) 593-7444
surveys@lsminc.us

S 2°-34'-56"E, a distance of 12.14 feet to a point, referenced by a 5/8 inch iron rod found bearing S 87°-25'-04"W, a distance of 10.00 feet..

S 22°-13'-58"E, a distance of 284.12 feet to a point.

THENCE, with the north line of the Brenda A. Covault 111.613 acre tract (O.R. 1028, Pg. 784), S 89°-14'-16"W, a distance of 1365.30 feet to a 5/8 inch iron rod found, passing a 5/8 inch iron rod found at 18.82 feet, a MAG spike found at 52.12 feet and a 5/8 inch iron rod found at 85.42 feet.

THENCE, with the east line of the aforesaid 49.745 acre tract, N 00°-45'-44"W, a distance of 374.39 feet to the point of beginning

Containing 8.334 acres, of which 0.396 acre is within the highway right-of-way.

Property is subject to any and all previous easements and rights-of-way of record.

The basis for bearings is the west line of Fractional Section 13, being S 0°-49'-29" E, and all other bearings are from angles and distances measured in a field survey by Lee Surveying and Mapping Co., Inc. on April 15, 2013.



ORIGINAL STAMP IN GREEN

Description prepared by:

A handwritten signature in cursive script that reads 'William K. Bruce'.

William K. Bruce
Professional Surveyor 7437
April 16, 2013

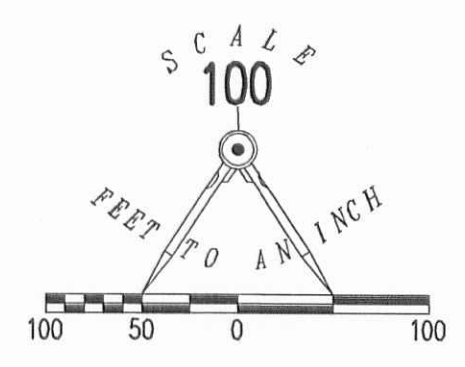
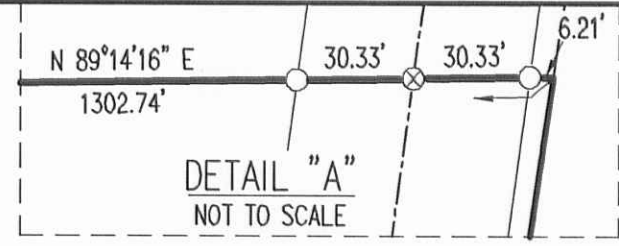
45260413

INDEXED ON MAP

60734D6

STATION 43+31
LOGAN COUNTY ENGINEER'S
FIELD BOOK 589, PG. 47

SHIRLEY ANN ALLEN
76.9 ACRES
O.R. 570, PG. 563
TRACT III

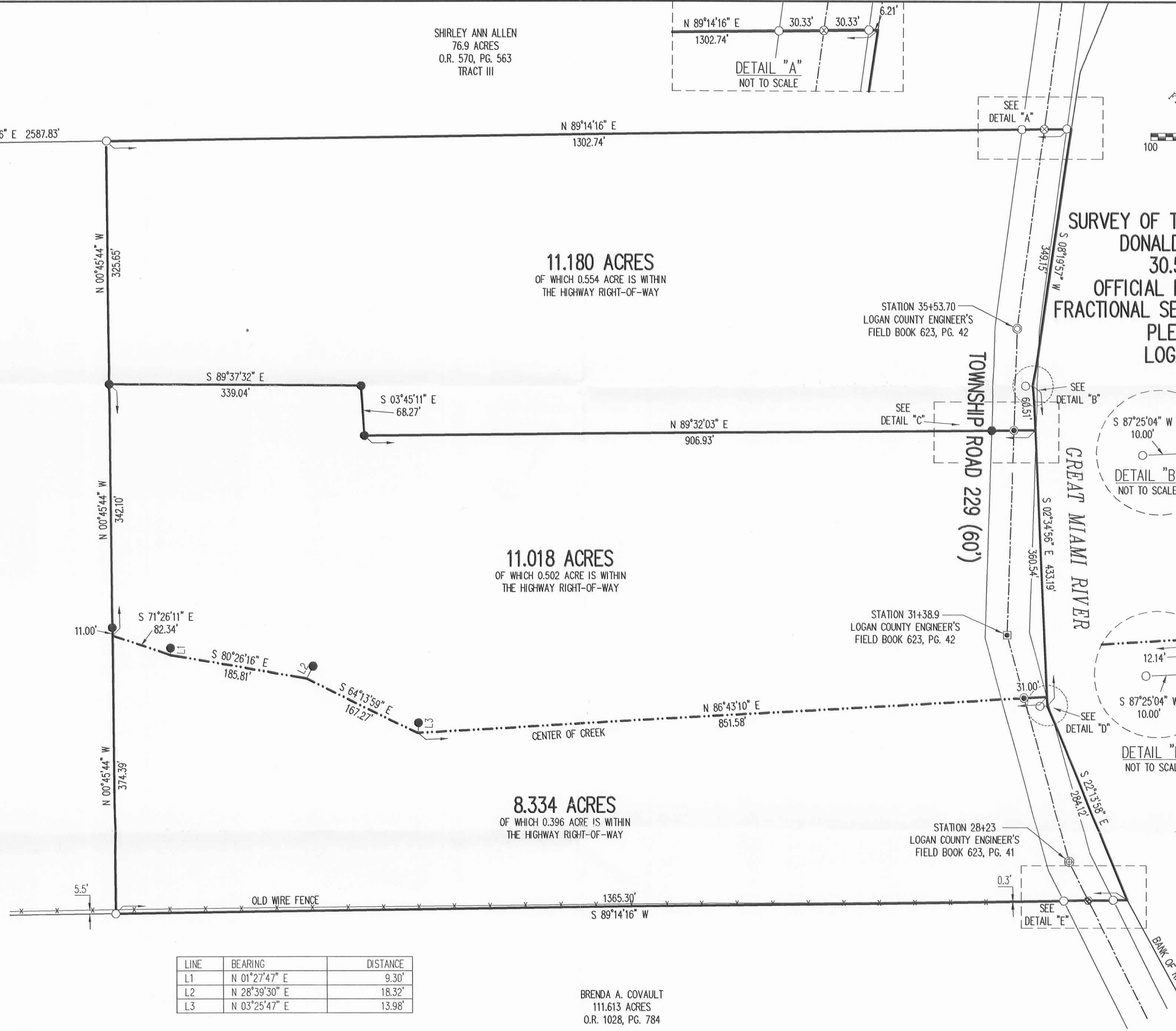


SURVEY OF THREE TRACTS OUT OF THE
DONALD M. BRUEGGERT, JR.
30.532 ACRE TRACT
OFFICIAL RECORD 893, PAGE 952
FRACTIONAL SECTION 13, TOWN 1, RANGE 8
PLEASANT TOWNSHIP
LOGAN COUNTY, OHIO

TOWNSHIP ROAD 75 (40')

SECTION 14, TOWN 1, RANGE 8
SECTION 13, TOWN 1, RANGE 8

JONAS J. WAGLER
49.745 ACRES
O.R. 893, PG. 990

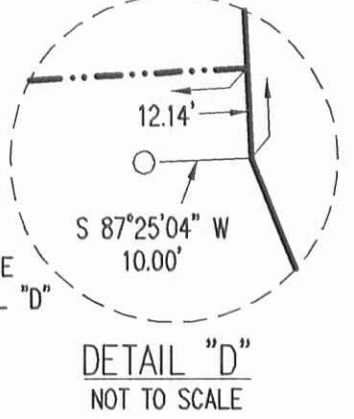
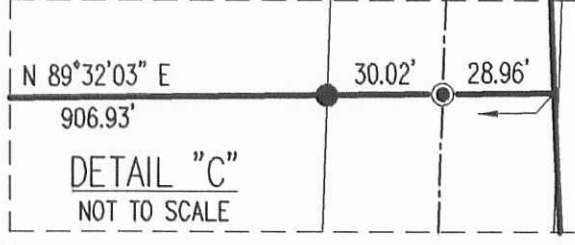
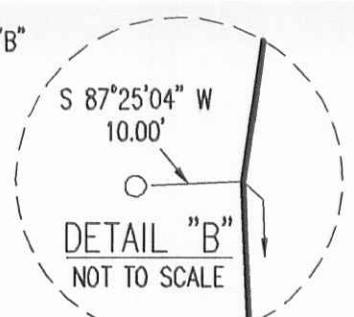
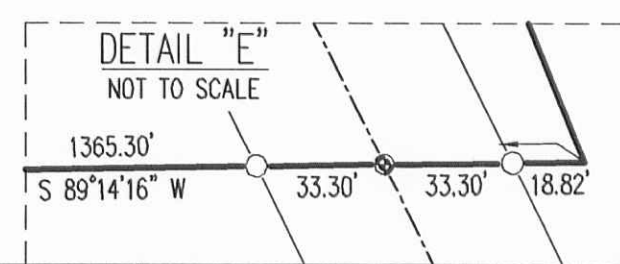


STONE FOUND IN
MONUMENT BOX AT
STATION 24+26.5
LOGAN COUNTY ENGINEER'S
FIELD BOOK 589, PG. 46

5/8 INCH IRON ROD FOUND
IN MONUMENT BOX AT
SECTION CORNER

LINE	BEARING	DISTANCE
L1	N 01°27'47\" E	9.30'
L2	N 28°39'30\" E	18.32'
L3	N 03°25'47\" E	13.98'

BRENDA A. COVAULT
111.613 ACRES
O.R. 1028, PG. 784



- LEGEND:
- ☒ STONE FOUND
 - ⊗ MAG NAIL FOUND
 - ⊗ RAILROAD SPIKE FOUND
 - 1 INCH SQUARE IRON BAR FOUND
 - 1/2 INCH IRON BAR FOUND
 - ⊕ MAG NAIL FOUND WITH FLASHER
 - ⊗ MAG SPIKE FOUND
 - 5/8 INCH IRON ROD FOUND
 - 5/8 INCH IRON ROD SET
 - ⊙ MAG NAIL SET

SURVEYED BY:
William K. Bruce
WILLIAM K. BRUCE
PROFESSIONAL SURVEYOR 7437
APRIL 15, 2013



COPYRIGHT 2013 BY:
LEE SURVEYING & MAPPING CO., INC.
117 North Madriver Street
BELLEFONTAINE, OHIO 43311
(937) 593-7335
WWW.LSMINC.US
surveys@lsminc.us
KSS 00413 45260413 L-4526-2

2 WORKING DAYS
BEFORE YOU DIG
CALL TOLL FREE 800-362-2764
OHIO UTILITIES PROTECTION SERVICE

INDEXED ON MAP
6073 4P