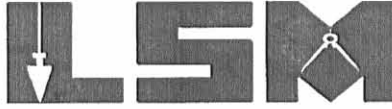


Lee Surveying and Mapping Co., Inc.

Land Surveys • Topography • Subdivisions • Construction Layout

117 N. Madriver St.
Bellefontaine OH 43311



Phone: (937) 593-7335
Fax: (937) 593-7444

ROACH 3.687 ACRES

Lying in Fractional Section 8, Town 2, Range 14, Pleasant Township, Logan County, Ohio.

Being out of the Donald E. Roach and LaQuita O. Roach original 20.8 acre tract as deeded and described in Volume 355, Page 674 and the 57.959 acre tract as deeded and described in Official Record 349, Page 695 of the Logan County Records of deeds and being more particularly described as follows:

Beginning at a 3/8 inch iron rod found at an angle in the center-line of County Highway 24 on center-line station 62+41.8 (Logan County Engineer's File X-24).

THENCE, with the center-line of County Highway 24 (50 feet wide), S 5°-45'-00" W, a distance of 391.23 feet to a MAG nail set at the TRUE POINT OF BEGINNING.

THENCE, with the center-line of County Highway 24, S 5°-45'-00" W, a distance of 150.22 feet to a railroad spike found.

THENCE, with the north line of the Neil Vonderhuevel 5.16 acre tract (O.R. 21, Pg. 211), N 87°-21'-09" W, a distance of 333.32 feet to a 12 inch concrete post found, passing a 5/8 inch iron rod set 25.04 feet.

THENCE, with the north line of the said 5.16 acre tract and said line extended, N 85°-09'-13" W, a distance of 570.28 feet to a 5/8 inch iron rod set, passing a 12 concrete post found at a 320.28 feet.

THENCE, N 5°-26'-59" E, a distance of 250.00 feet to a 5/8 inch iron rod set.

THENCE, S 85°-09'-13" E, a distance of 250.00 feet to a 5/8 inch iron rod set.

THENCE, with the west line of the aforesaid 20.8 acre tract, S 5°-26'-59" W, a distance of 99.99 feet to a 5/8 inch iron rod set.

THENCE, S 85°-09'-13" E, a distance of 315.82 feet to a 5/8 inch iron rod set.

THENCE, S 87°-21'-09" E, a distance of 338.57 feet to the point of beginning, passing a 5/8 inch iron rod set at 313.53 feet.

Containing 3.687 acres, of which 0.086 acre is within the highway right-of-way.

The basis for bearings is the center-line of County Highway 24, being S 5°-45'-00" W, and all other bearings are from angles and distances measured in a field survey by Lee Surveying and Mapping Co., Inc. on January 9, 2003.

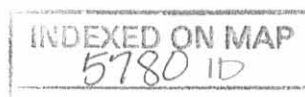
Description prepared by:



ORIGINAL STAMP IN GREEN

Jeffrey I. Lee
Jeffrey I. Lee
Professional Surveyor 6359
January 17, 2003
Revised February 3, 2003

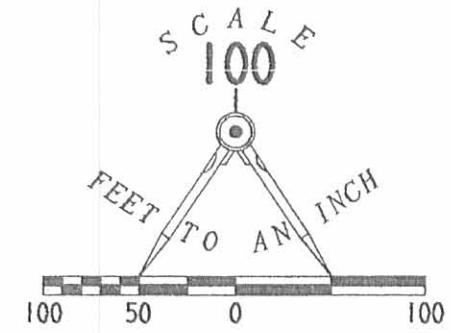
L-3512



LEGEND

- 5/8 INCH IRON ROD FOUND
- 5/8 INCH IRON ROD SET
- ⊗ 3/8 INCH IRON ROD FOUND
- ⊗ RAILROAD SPIKE FOUND
- MAG NAIL SET
- ⊕ 12 INCH CONCRETE POST FOUND

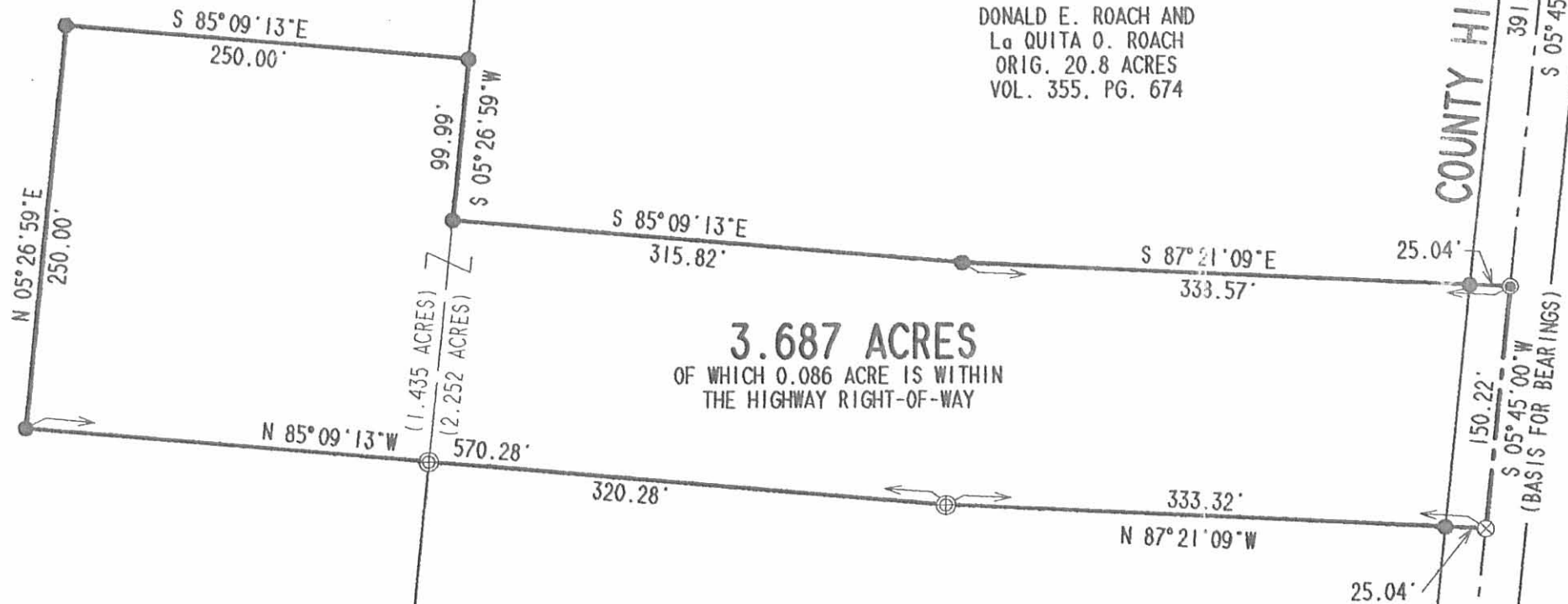
STA. 62+41.8
LOGAN CO. ENG. FILE X-24



DONALD E. ROACH AND
LaQUITA O. ROACH
ORIG. 57.959 ACRES
O.R. 349. PG. 695

DONALD E. ROACH AND
La QUITA O. ROACH
ORIG. 20.8 ACRES
VOL. 355. PG. 674

**SURVEY OF 3.687 ACRES OUT OF THE
DONALD D. ROACH AND LAQUITA O. ROACH
ORIGINAL 20.8 ACRE TRACT
VOLUME 355. PAGE 674
AND 57.959 ACRE TRACT
OFFICIAL RECORD 349. PAGE 695
FRACTIONAL SECTION 8. TOWN 2. RANGE 14
PLEASANT TOWNSHIP
LOGAN COUNTY, OHIO**



3.687 ACRES
OF WHICH 0.086 ACRE IS WITHIN
THE HIGHWAY RIGHT-OF-WAY

NEIL VONDERHUEVEL AND
BONNIE VONDERHUEVEL
5.16 ACRES
O.R. 21. PG. 211



ORIGINAL STAMP IN GREEN

SURVEYED BY:

Jeffrey I. Lee
JEFFREY I. LEE
PROFESSIONAL SURVEYOR 6359
JANUARY 9, 2003

COPYRIGHT 2003 BY:
LEE SURVEYING & MAPPING CO., INC.
117 North Madriver Street
BELLEFONTAINE, OHIO 43311
(937) 593-7335

D 407 SROACH L-3412-3

INDEXED ON MAP
5780 IP

2 WORKING DAYS
BEFORE YOU DIG
CALL TOLL FREE **800-362-2764**
OHIO UTILITIES PROTECTION SERVICE.

March 15, 2002
Rev. March 29, 2002

Being part of Neil Vonderhuevel's 5.16 acre tract (OR 21 pg. 211) in Fractional Section 8, Town 2, Range 14, B.T.M.R.S., Pleasant Township, Logan County, Ohio and more particularly described as follows:

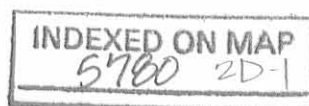
Beginning, for reference, at stone found marking an angle point in CH 24 centerline and the Southeast corner of Charles H. Gamble's 17.34 acre tract (DB 347-106), said stone being North 3 degrees 47 minutes 49 seconds East from a PK spike found marking the intersection of the centerlines of TH 43 and CH 24;

thence North 5 degrees 45 minutes 00 seconds East (Ref Brg survey 5165) 1154.48 feet to a railroad spike found in the centerline of said CH 24 marking the Northeast corner of said 17.34 acre tract and the Southeast corner of said Vonderhuevel 5.16 acre tract, said corner being the principal point of beginning for the tract hereinafter described;

thence North 85 degrees 06 minutes 09 seconds West 655.00 feet with and along the North line of said Gamble's 17.34 acre to an octagon shaped concrete corner post (tapering from a 14 inch top to a 20 inch bottom) found in the East line of Donald Roach's 57.959 acre tract (OR 349-695) marking the Northwest corner of said 17.34 acre tract, passing an octagon shaped concrete corner post (tapering from a 14 inch top to a 20 inch bottom) found at 25.00 feet and an iron pin set for reference at 649.96 feet;

thence North 6 degrees 06 minutes 15 seconds East 339.16 feet with and along said Roach's East line to an octagon shaped concrete corner post (tapering from a 14 inch top to a 20 inch bottom) found marking the Southwest corner of Donald Roach's 20.80 acre tract (DB 355-674);

thence South 85 degrees 15 minutes 33 seconds East 320.32 feet with and along the South line of said Roach's 20.80 acre tract to an octagon shaped concrete



post (tapering from a 14 inch top to a 20 inch bottom) found marking an angle point in said south line, passing iron pins set for reference at 5.00 feet and 315.36 feet;

thence South 5 degrees 13 minutes 02 seconds West 156.21 feet to an iron pin set;

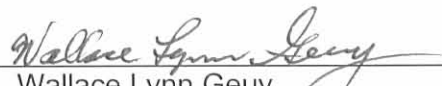
thence South 84 degree 27 minutes 00 seconds East 331.11 feet to a 2 1/2 inch Mag spike set in said CH 24 centerline, passing an iron pin set at 306.11 feet;

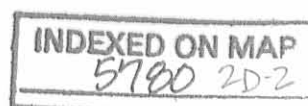
thence with the centerline of CH 24 South 5 degree 45 minutes 00 seconds West 180.00 feet to the principal point of beginning. Containing 3.896 acres more or less and subject to all legal highways and easements of record or use. 0.103 acres being in CH 24 right of way.

The above described 3.896 acre tract was prepared from an actual field survey by Wallace Lynn Geuy, P.S., Registered Surveyor No. 5105 dated 15 March 2002.

Iron pins set are 5/8 x 30 inch with a plastic cap stamped W.L.G. RLS 5105.

Survey, description and plat by


Wallace Lynn Geuy
Registered Surveyor No. S-5105
8673 W. Rt. 29
DeGraff, OH 43318



REC'D 4-02-02 JMY OK

March 15, 2002
REV March 29, 2002

Being part of Neil Vonderhuevel's 5.16 acre tract (OR 21 pg. 211) in Fractional Section 8, Town 2, Range 14, B.T.M.R.S., Pleasant Township, Logan County, Ohio and more particularly described as follows:

Beginning, for reference, at stone found marking an angle point in CH 24 centerline and the Southeast corner of Charles H. Gamble's 17.34 acre tract (DB 347-106), said stone being North 3 degrees 47 minutes 49 seconds East from a PK spike found marking the intersection of the centerlines of TH 43 and CH 24;

thence North 5 degrees 45 minutes 00 seconds East (Ref Brg survey 5165) 1334.48 feet to a 2 1/2 inch Mag spike set in the centerline of said CH 24 marking the principal point of beginning for the tract hereinafter described;

thence North 84 degrees 27 minutes 00 seconds West 331.11 feet to an iron pin set, passing an iron pin set at 25.00 feet;

thence North 5 degrees 13 minutes 02 seconds East 156.21 feet to an octagon shaped concrete post (tapering from a 14 inch top to a 20 inch bottom) found marking an angle point in the South line of Donald Roach's 20.80 acre tract (DB 355-674);

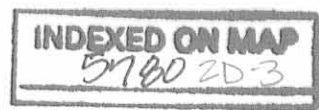
thence South 87 degrees 11 minutes 35 seconds East 333.00 feet with and along the South line of said Roach's 20.80 acre tract to a railroad spike found in said CH 24 centerline marking the Southeast corner of said 20.80 acre tract, passing an octagon shaped concrete post (tapering from a 14 inch top to a 20 inch bottom) found at 308.00 feet;

thence with the centerline of said CH 24 South 5 degree 45 minutes 00 seconds West 172.15 feet to the principal point of beginning. Containing 1.251 acres more or less and subject to all legal highways and easements of record or use. 0.099 acres being in CH 24 right of way.

The above described 1.251 acre tract was prepared from an actual field survey by Wallace Lynn Geuy, P.S., Registered Surveyor No. 5105 dated 15 March 2002.

Iron pins set are 5/8 x 30 inch with a plastic cap stamped W.L.G. RLS 5105.

Survey, description and plat by Wallace Lynn Geuy
Wallace Lynn Geuy
Registered Surveyor No. S-5105
8673 W. Rt. 29
DeGraff, OH 43318



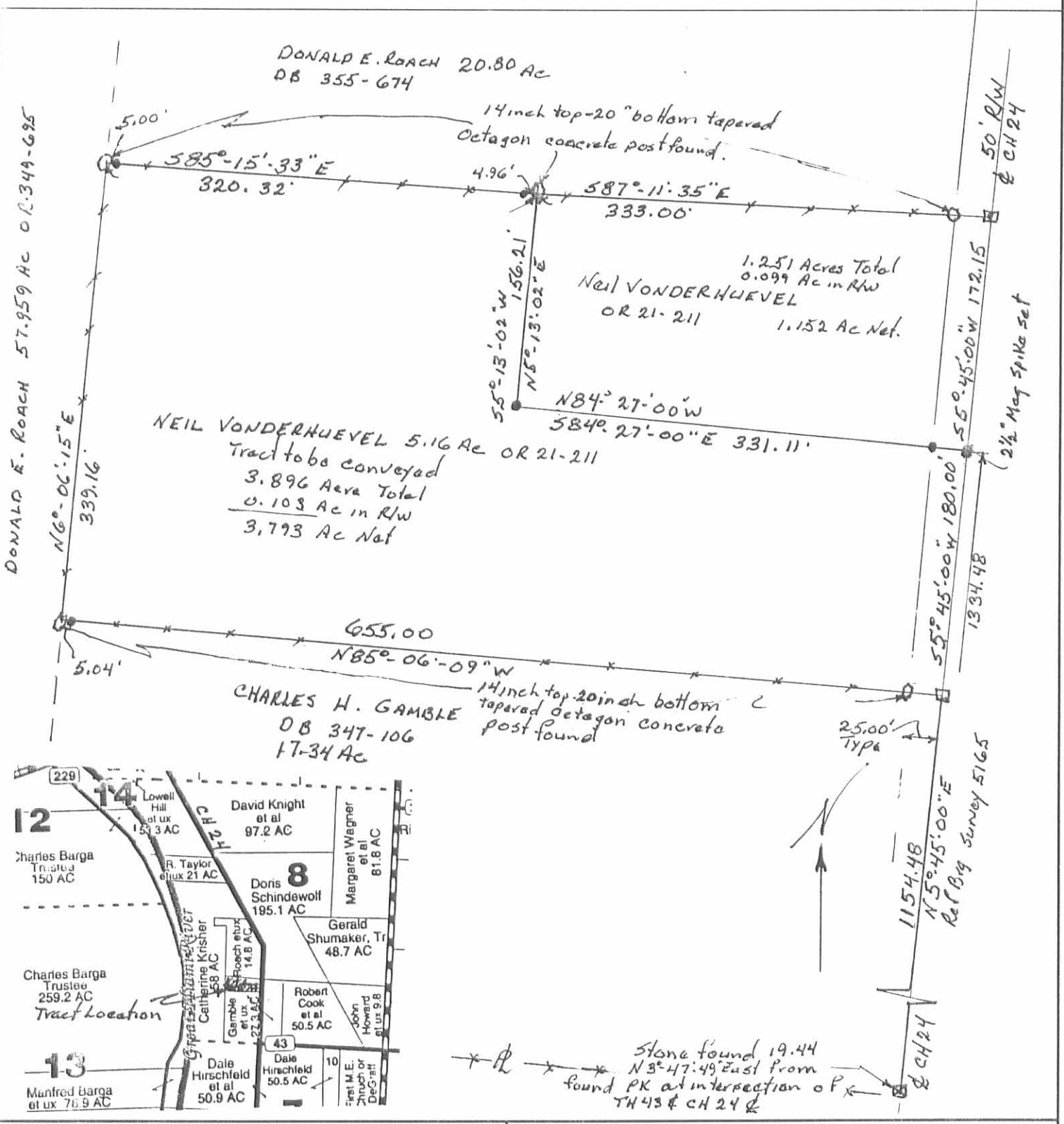
REC'D 4-02-02 SML OK

PLAT OF SURVEY

SECTION Fractional 8
LOT
QUARTER

TOWNSHIP 2
RANGE 14
COUNTY LOGAN

PLEASANT
B.T.M.R.S.
STATE OF OHIO



REFERENCE MATERIALS

- 1 OR 349-695
 - 2 DB 355-674
 - 3 DB 347-106
 - 4 survey 2588
 - 5 survey 5780
 - 6 survey 5165
- PRIOR DEED VOLUME OR 21 PAGE 211

BASIS OF BEARINGS Survey 5165 Centerline CH 24

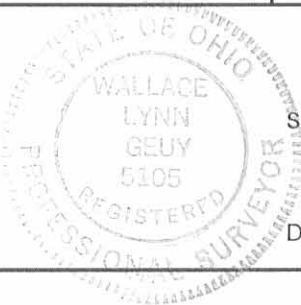
Scale 1 inch = 100 feet



LEGEND

- RAILROAD SPIKE FOUND
- RAILROAD SPIKE SET
- ⊠ STONE FOUND
- IRON PIN/PIPE FOUND
- SET 5/8" X 30" IRON PIN WITH A PLASTIC CAP STAMPED W.L.G. RLS 5105

W. L. GEUY SURVEYING, LLC
 8673 W. Rt. 29
 DeGraff, OH 43318
 937/362-2755
 Fax 937/362-4002



SURVEYED BY: Wallace Lynn Geuy
 Wallace Lynn Geuy
 Registered Surveyor No. 5105

Date: 15 March 02
 Rev 29 Mar 02

INDEXED ON MAP
 57802P

Roach Survey Description
July, 1975

Being situated in Pleasant Township, Logan County, Ohio; and being a part of Section 8, Town 2, Range 14.

Beginning at the point of intersection of the north line of said Section 8 and the centerline of County Road 24.

Thence with the center of County Road 24 S 27° - $46'$ E 927.9 feet to an angle in the road.

Thence again with the center of County Road 24 S 5° - $45'$ W 540.6 feet to a iron. Said iron is the true point of beginning for this description.

Thence continuing with the center of County Road 24 S 5° - $45'$ W 352.2 feet to a iron. Said iron is the northeast corner of a 17.34 acre tract.

Thence with the north line of said 17.34 acre tract N 85° - $27'$ W 655.0 feet to a concrete corner post in the east line of a 59.03 acre tract, passing thru a concrete corner post at 25.0 feet.

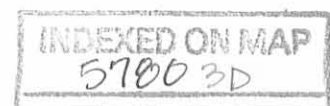
Thence with the east line of said 59.03 acre tract N 5° - $45'$ E 340.0 feet to a concrete corner post.

Thence S 85° - $27'$ E 322.0 feet to a concrete corner post.

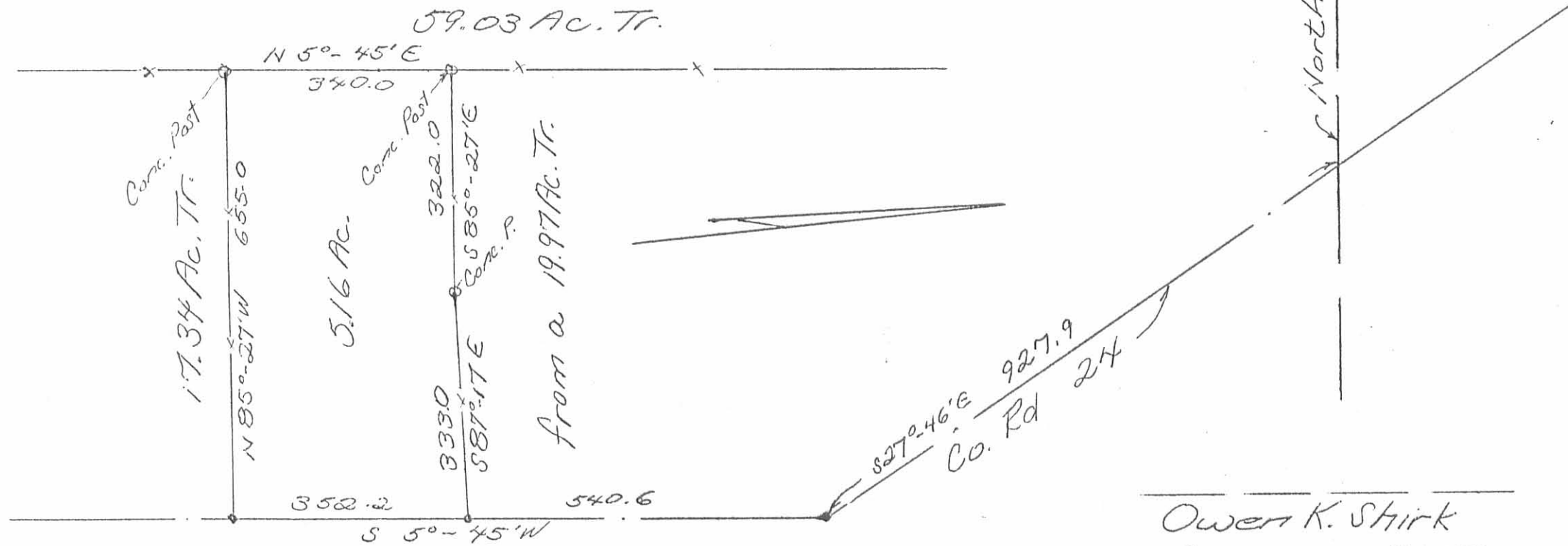
Thence S 87° - $17'$ E 333.0 feet to the place of beginning, passing thru a concrete corner post at 303.0 feet.

Containing 5.16 acres more or less. Being surveyed from a 19.97 acre tract.

Owen K. Shirk
Surveyor 4271



ROACH SURVEY
 PLEASANT TWP., LOGAN CO., OHIO
 SEC. 8, T-2, R-14 1" = 200'



Owen K. Shirk
 Surveyor 4247
 7-15-75

5780 3D

INDEXED ON MAP