

County Highway No. 34.

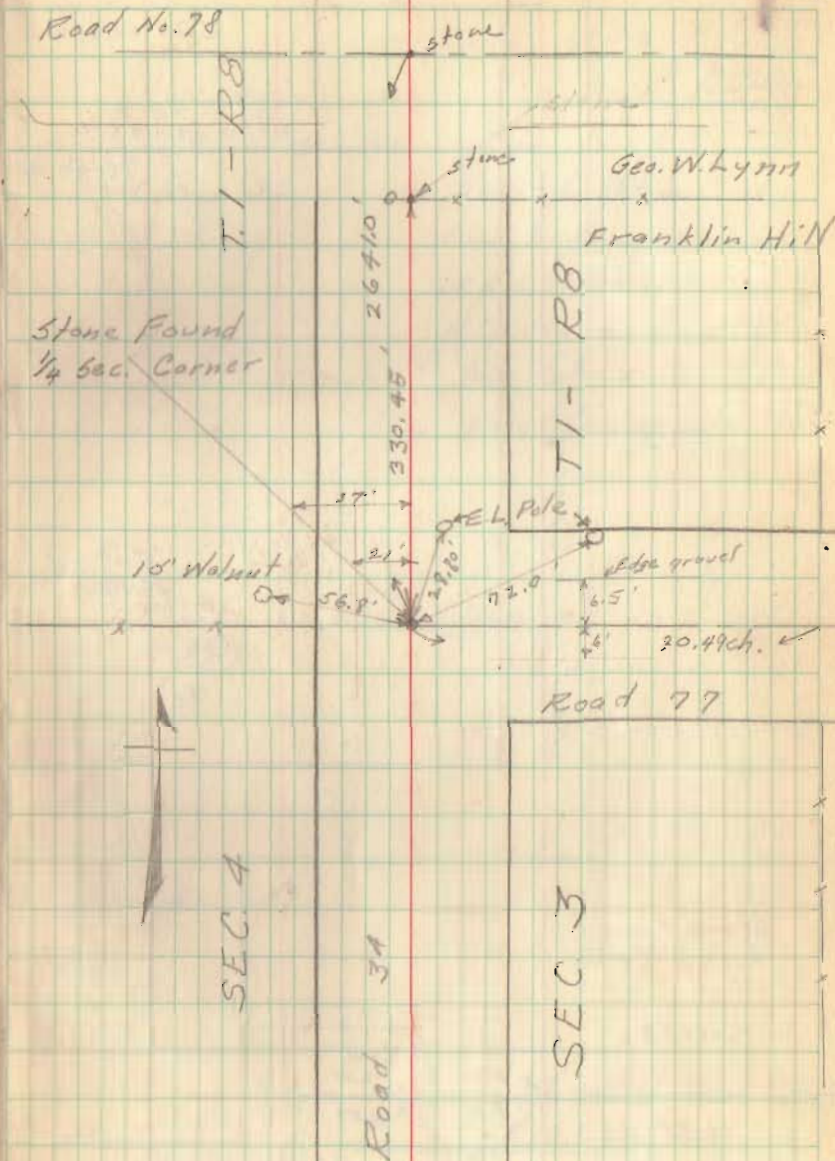
Aug. 27, 1941
E. K. Gore
G. W. Wilgus
R. H. Reed
R. G. V. Lucas

Witnesses to $\frac{1}{4}$ Section Corner
Stone between sections
3 & 4 T. 1-R. 8 - Pleasant
Township - at Intersection
of Roads Nos. 34 & 77

INDEXED ON MAP

4411

110



County Highway No. 34

Moore 40.50 ch
 Core 40.48 ch

8" Elm Moore 40.48 ch Elm
 (Core - 40.48 ch)
 Elm

Moore 40.44 ch

Concrete Post
 Core 40.41 ch

Moore 40.42 ch
 32.5°

40.46 ch
 Core

SEC. 22-T1-R 8

Concrete Post

Alonzo L. Barnhart
 Enoch Stiles

11

9/4/41
 EXCISE
 G.W. WILSON
 R.H. KERR
 R.G. LUCAS



old fence line

Note:- Location of
 Line between Sections
 15 & 16 from survey by
 H.C. Moore in 1865
 See Survey Book "C" Page
 Logan Co. Engineer's Office

Concrete Post

Stone Found

SEC. 15-T1-R 8

Rd. 34

Section Line

Road No. 74

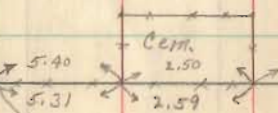
Stone found
 1/4 Sec. Corner

section Line R134

Stone Found
 section Corner

Sec 16-T1-R 8

Sec 21-T1-R 8



32.5°

40.46 ch
 Core

SEC. 22-T1-R 8

County Highway No. 34.
Witnesses to Stone Found
at Corner Sections 3, 4, 9 & 10
T 1 - R 8

9/8/41

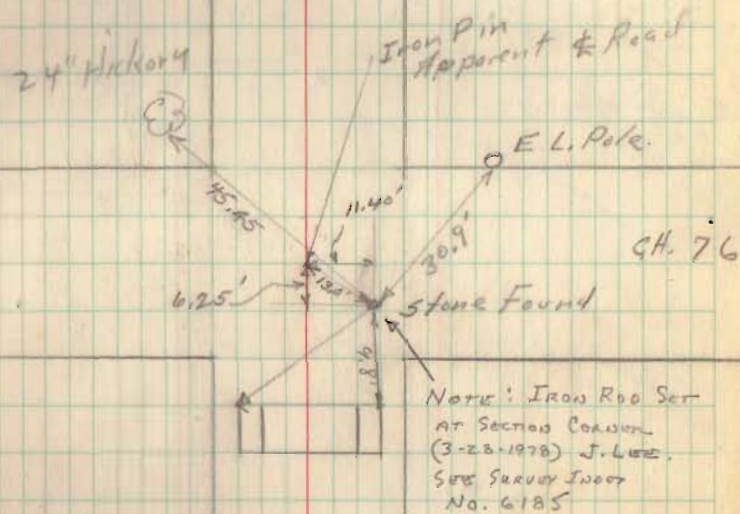
12

Cork
Wiggins
Reed
Lucas

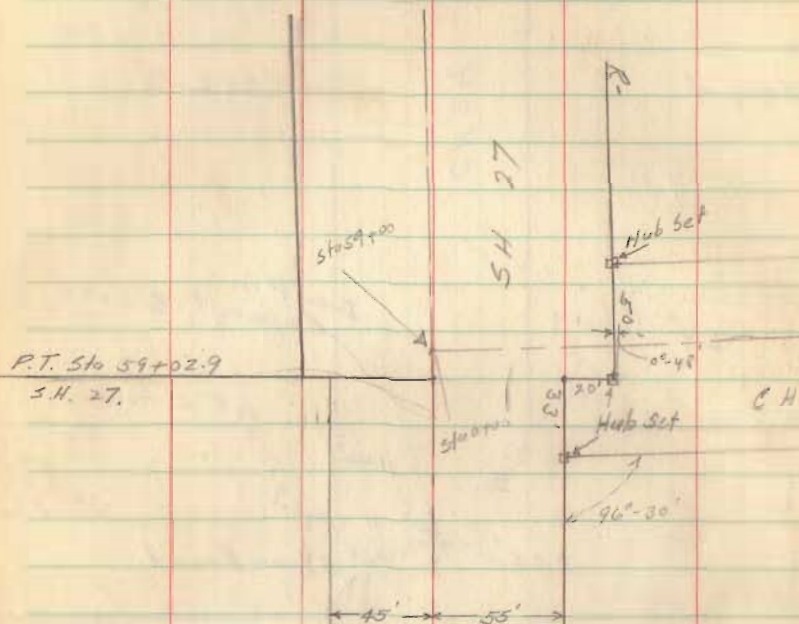
sec 4

CH 34

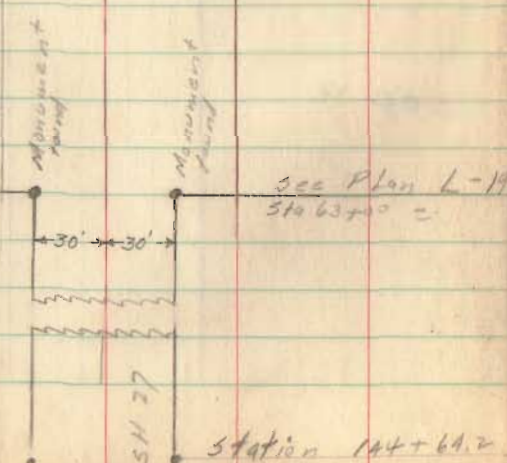
sec 3



County Highway No. 34
Miami Township



End Quincy Bridge
Project - Sta. 63+00
See Plan L-



See Plan L-19
Sta 63+00 =

34

Sta 137+13.00

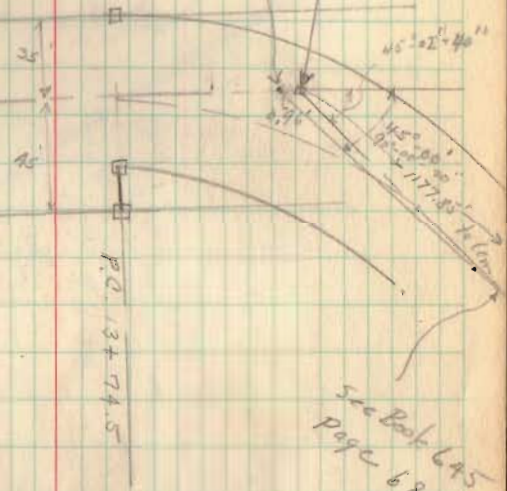
P.C.

Sept. 19, 1941
E. K. Corie
G. W. Wilgus
E. H. Reed
Ray Holmes

18

4162.4
36
4162.44

Intersect with
Cont. line of
Sta - 4+68.44
Spike Set
P.I. Sta. 4+69.4
Hub Set



See Book 645
Page 68

Sept. 22, 1941

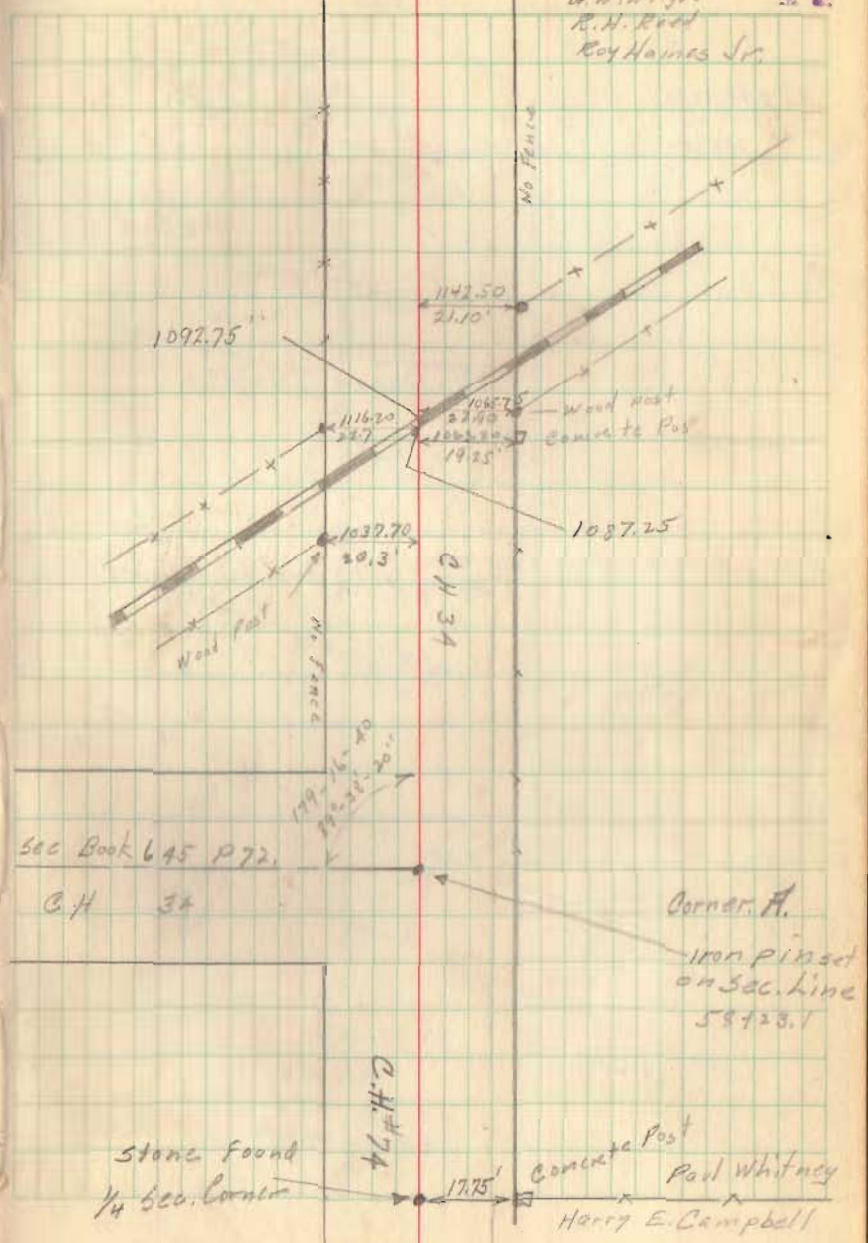
E. K. Lora

G. W. Wilgus

R. H. Reed

Roy Haines Jr.

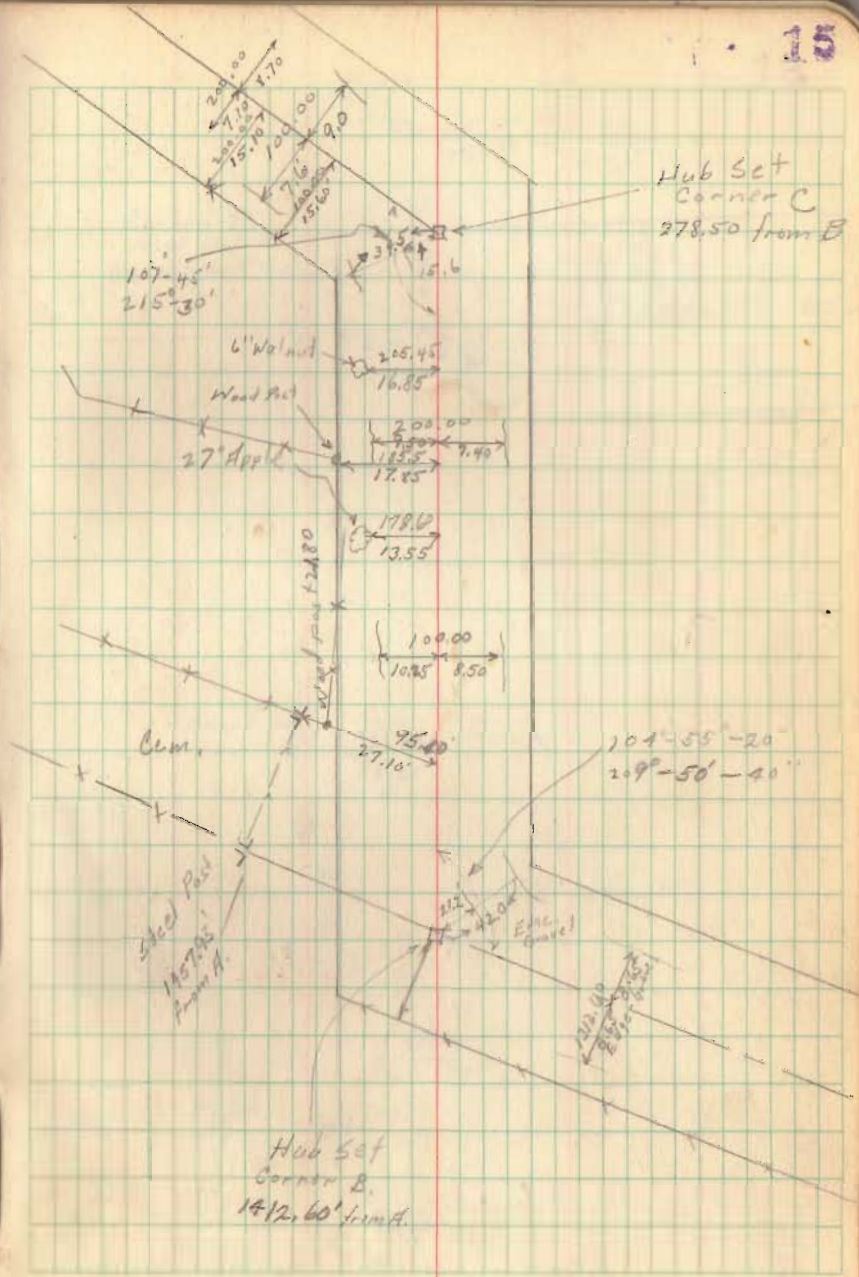
14



278.50

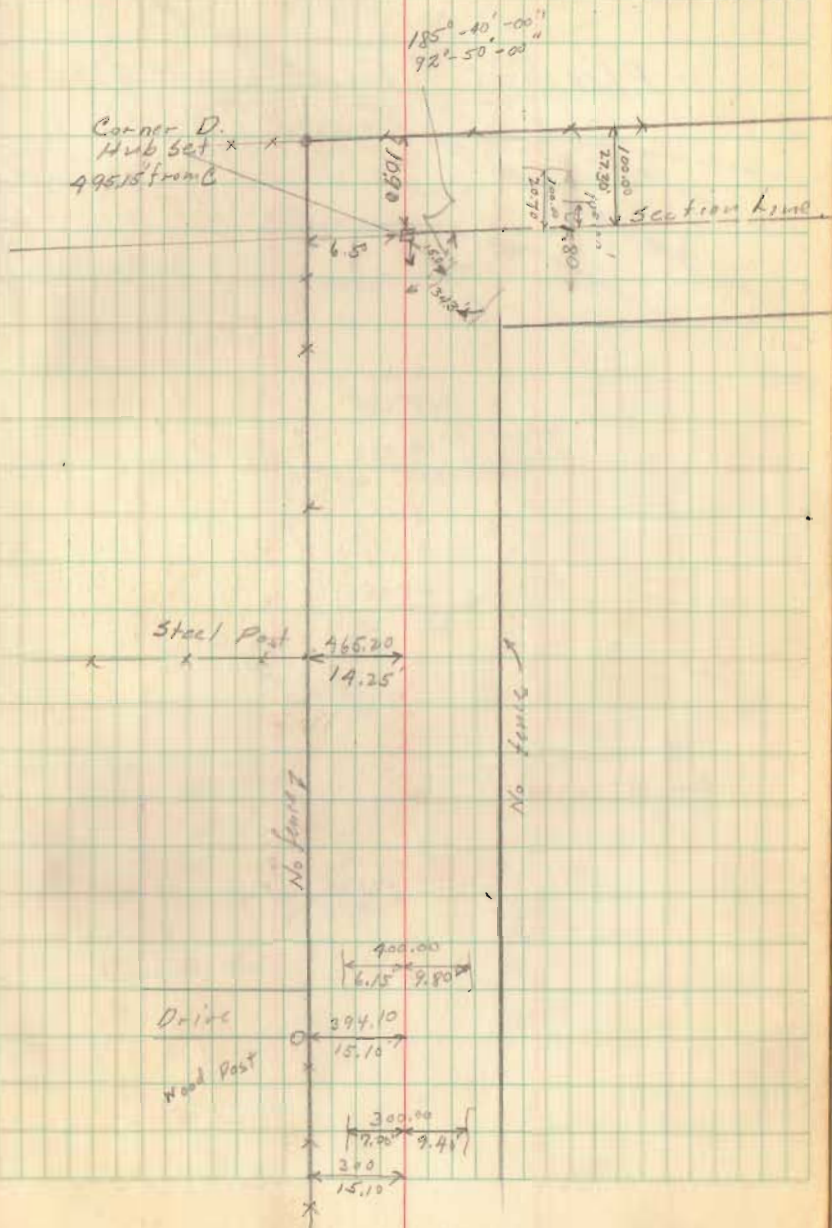
2-9-52

274.45



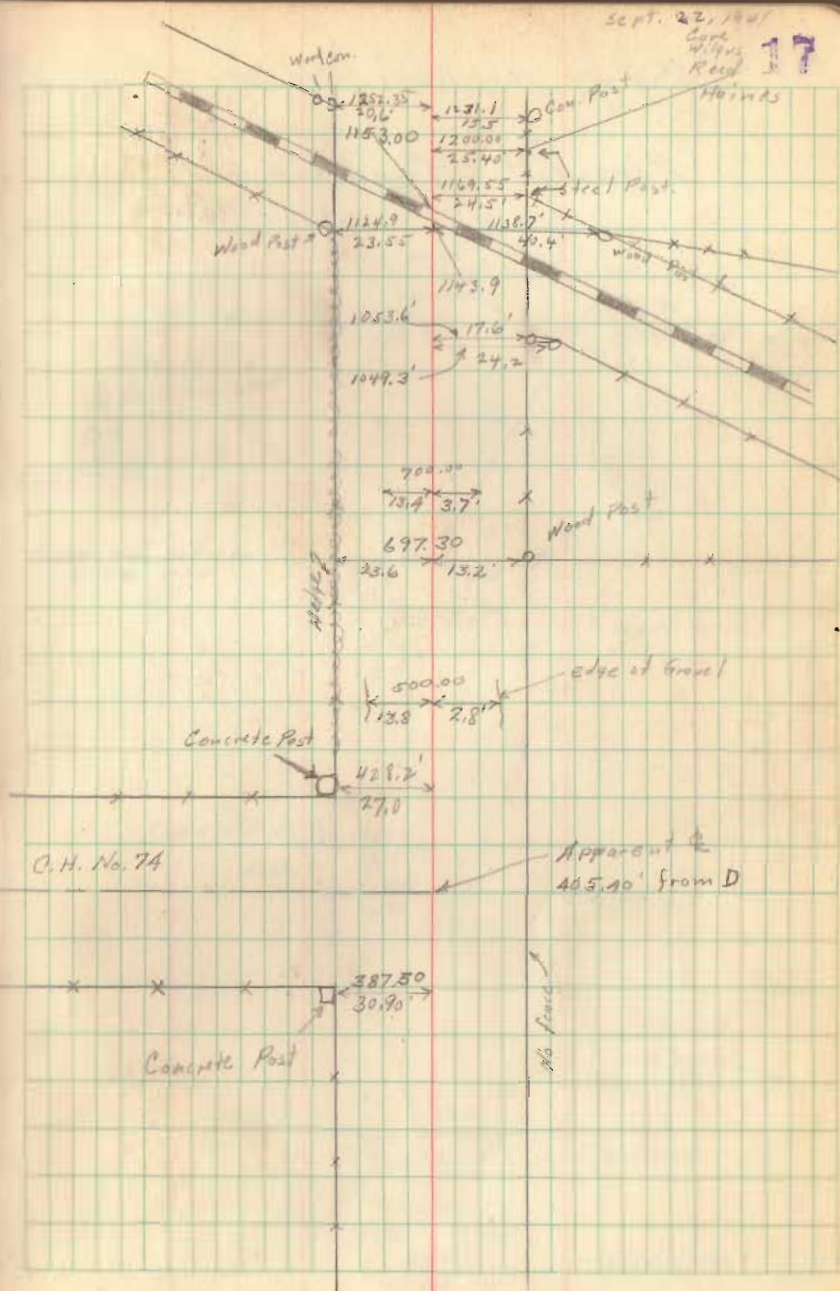
496.30
 1.15
 495.15

195



County Highway No. 34

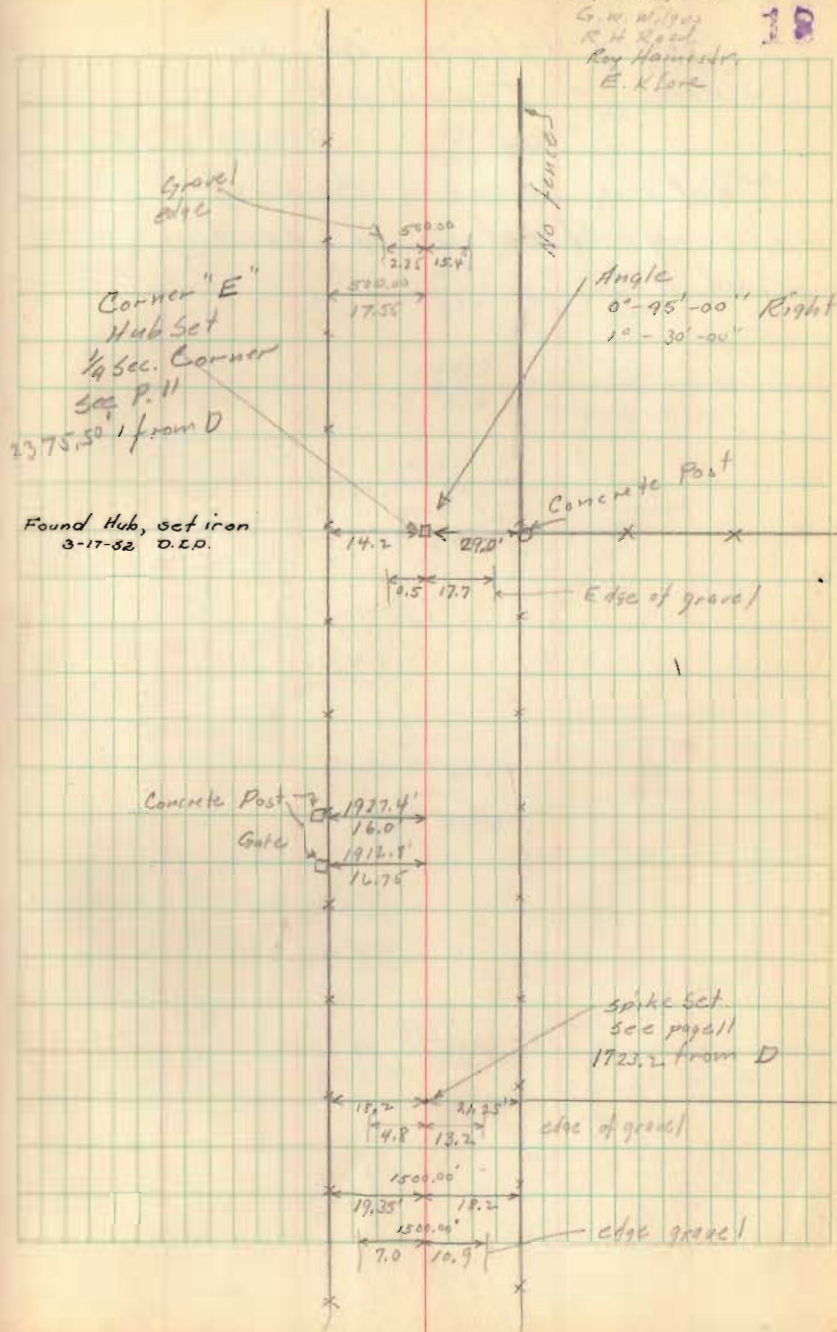
Pleasant Township



County Highway No 34

Pleasant Township

Sept. 22, 1941
G. W. Wilson
R. H. Reed
Roy Hamsted
E. K. Lane



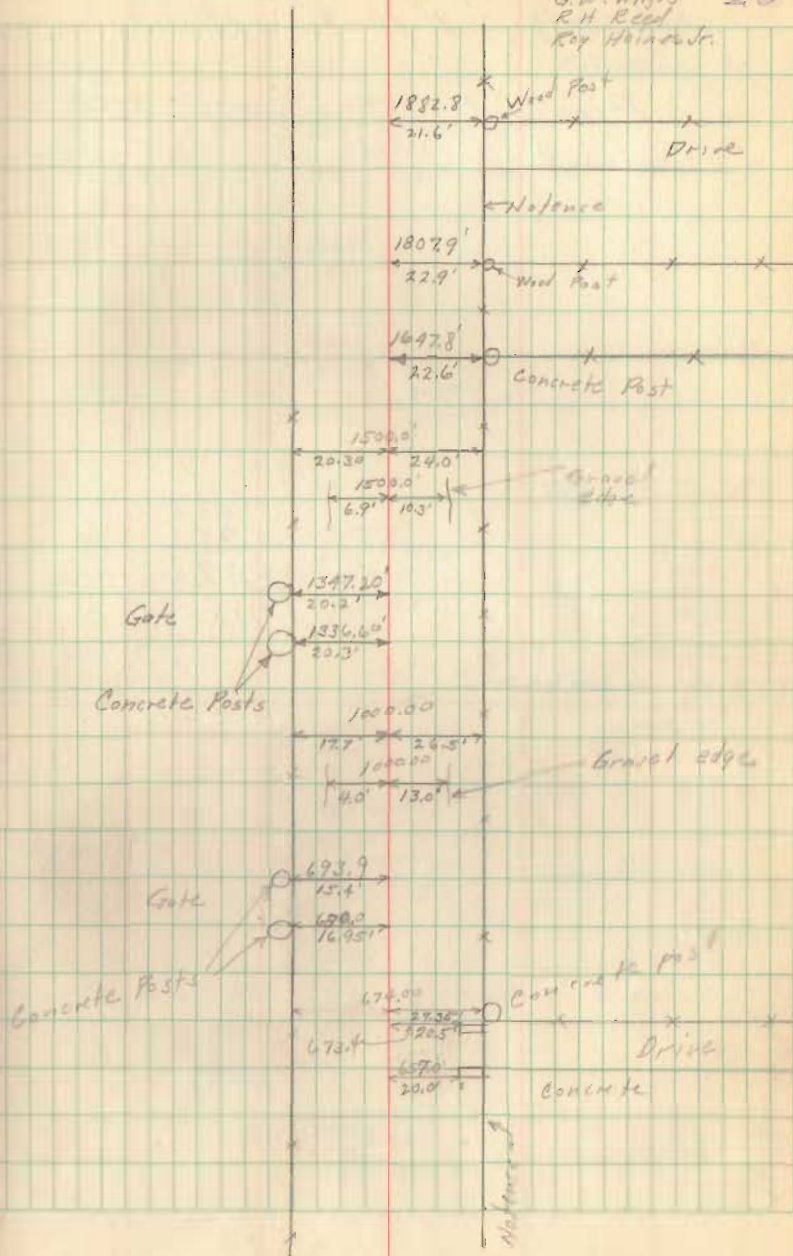
County Highway No 34.
- Pleasant Township -

Section Line Survey
showing location of existing
road.

Sept. 23 1941

E. K. Cook
G. W. Wilgus
R. H. Reed
Roy Weindler Jr.

19



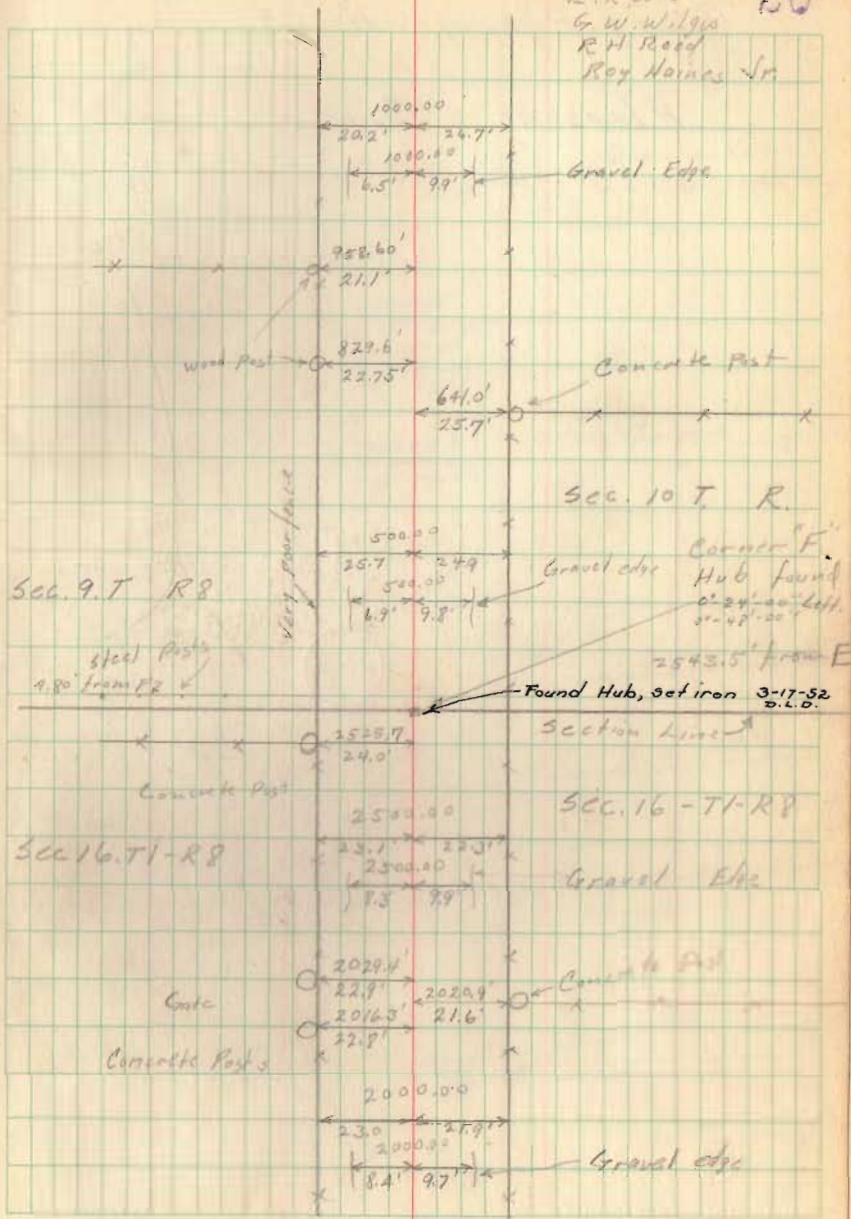
County Highway No 34

Pleasant Township

43.5
25.7
17.8

Sept. 23, 1941

E. K. Core
G. W. Wilgus
R. W. Reed
Roy Wainwright Jr



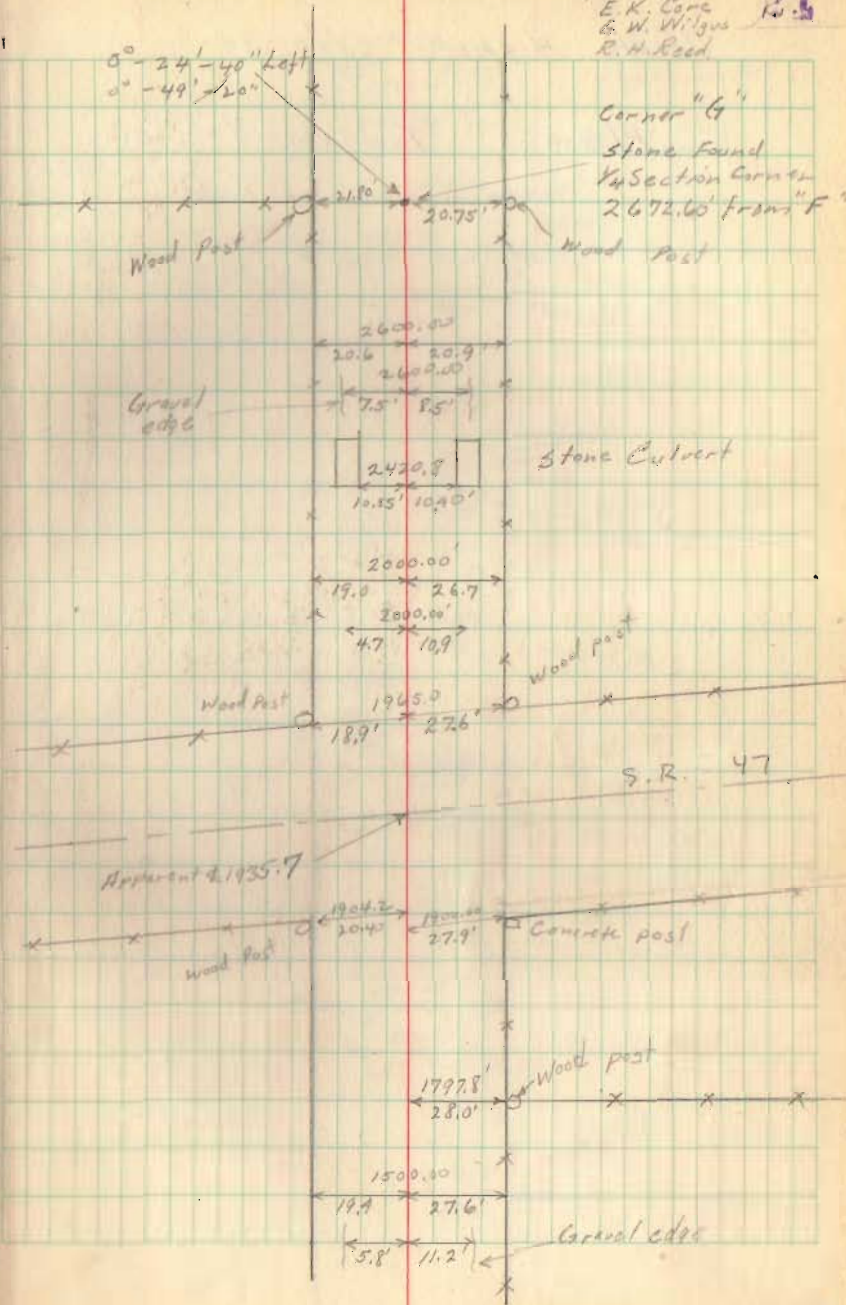
County Highway No. 34

Pleasant Township

4411

Sept. 23, 1941
E. K. Carr
G. W. Wilgus
R. H. Reed

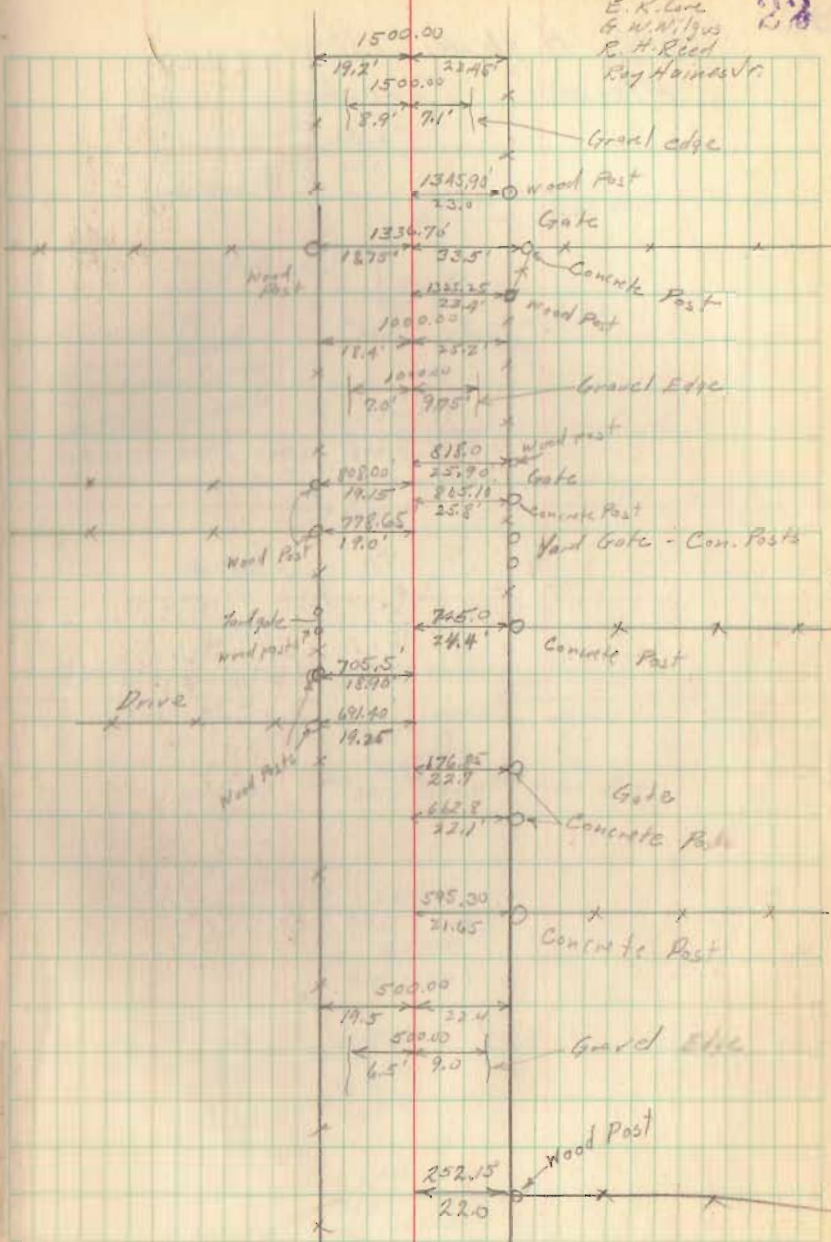
21



County Highway No. 34

Pleasant Township

Sept. 23, 1941
E. K. Lane
G. W. Wilgus
R. H. Reed
Ray Haines Jr. 28



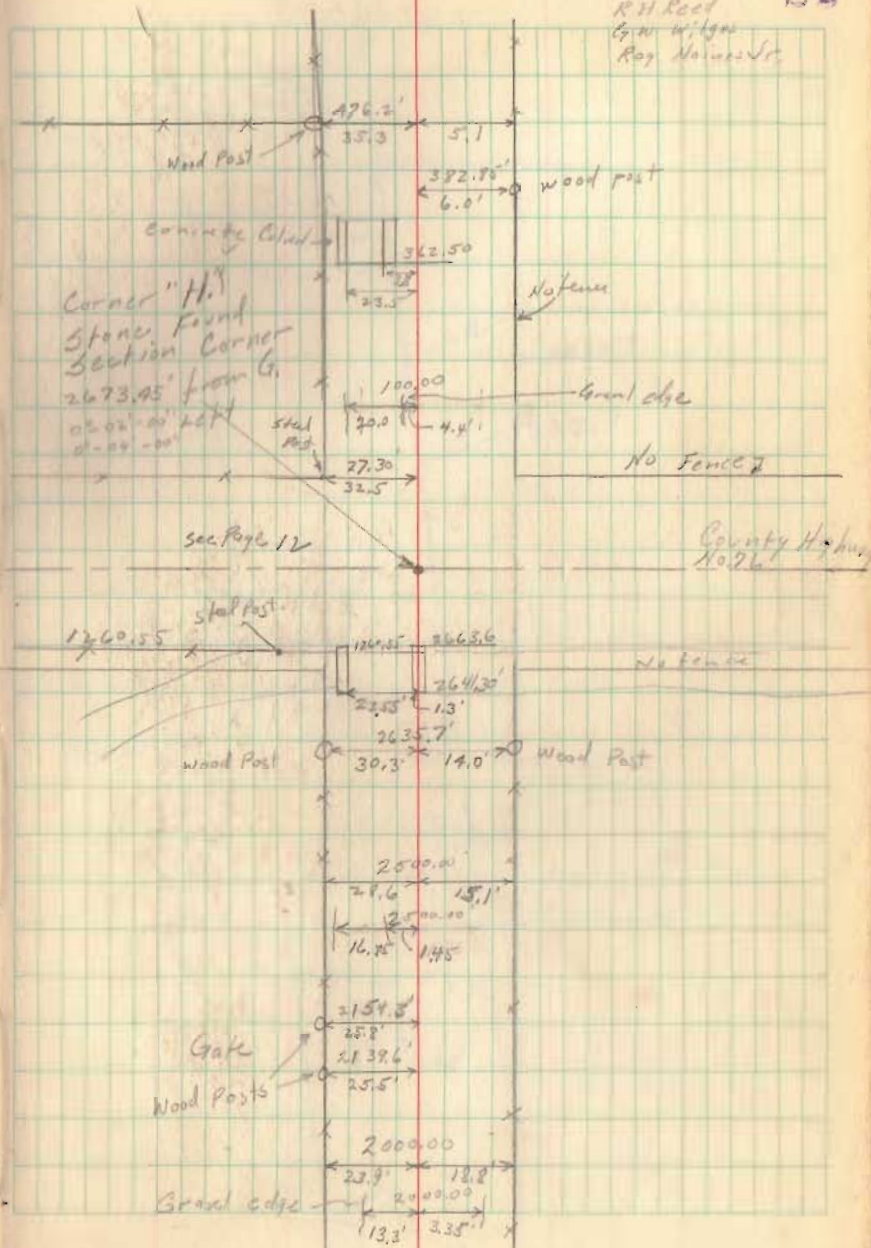
County Highway No. 34
Pleasant Township

73.45
129.00
152.45

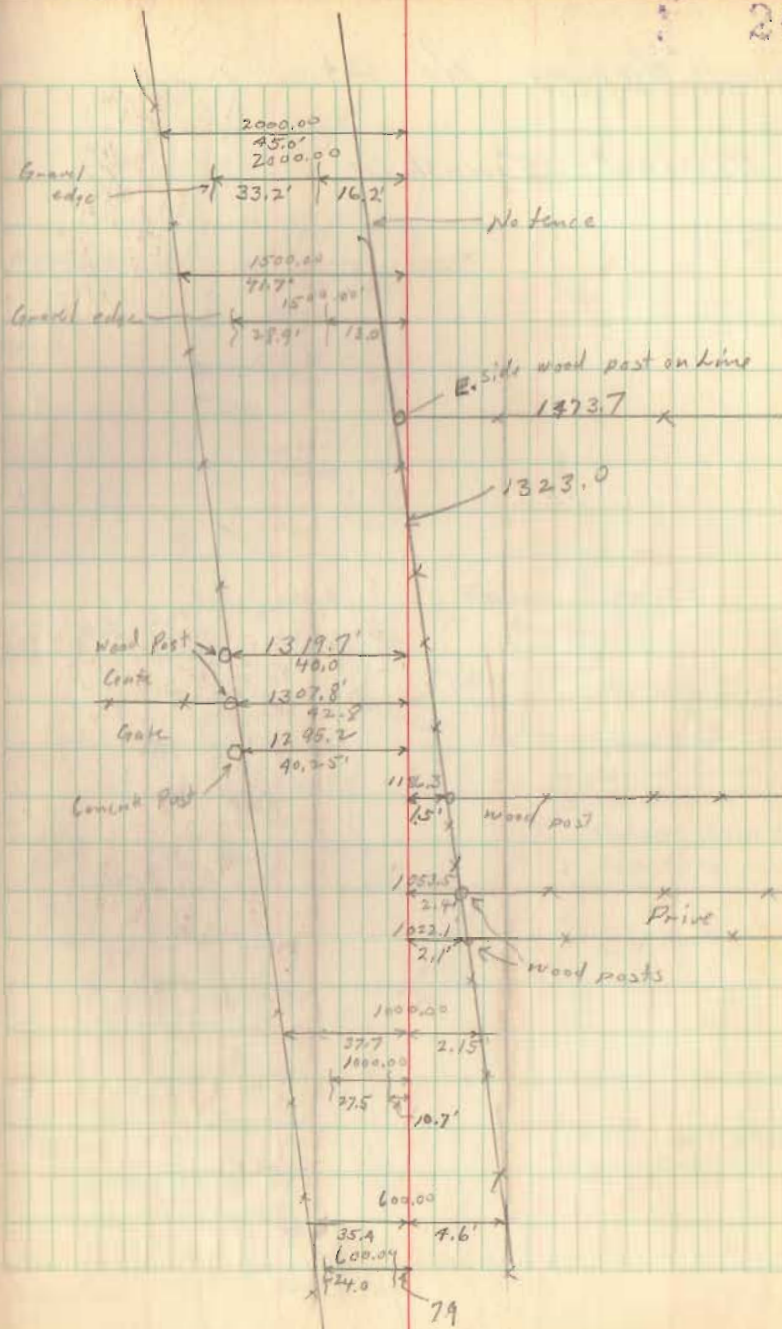
Sept. 23, 1941

28

E. K. Cole
R. H. Reed
G. W. Wiggins
Ray N. ...



Handwritten scribbles and initials at the bottom of the page.

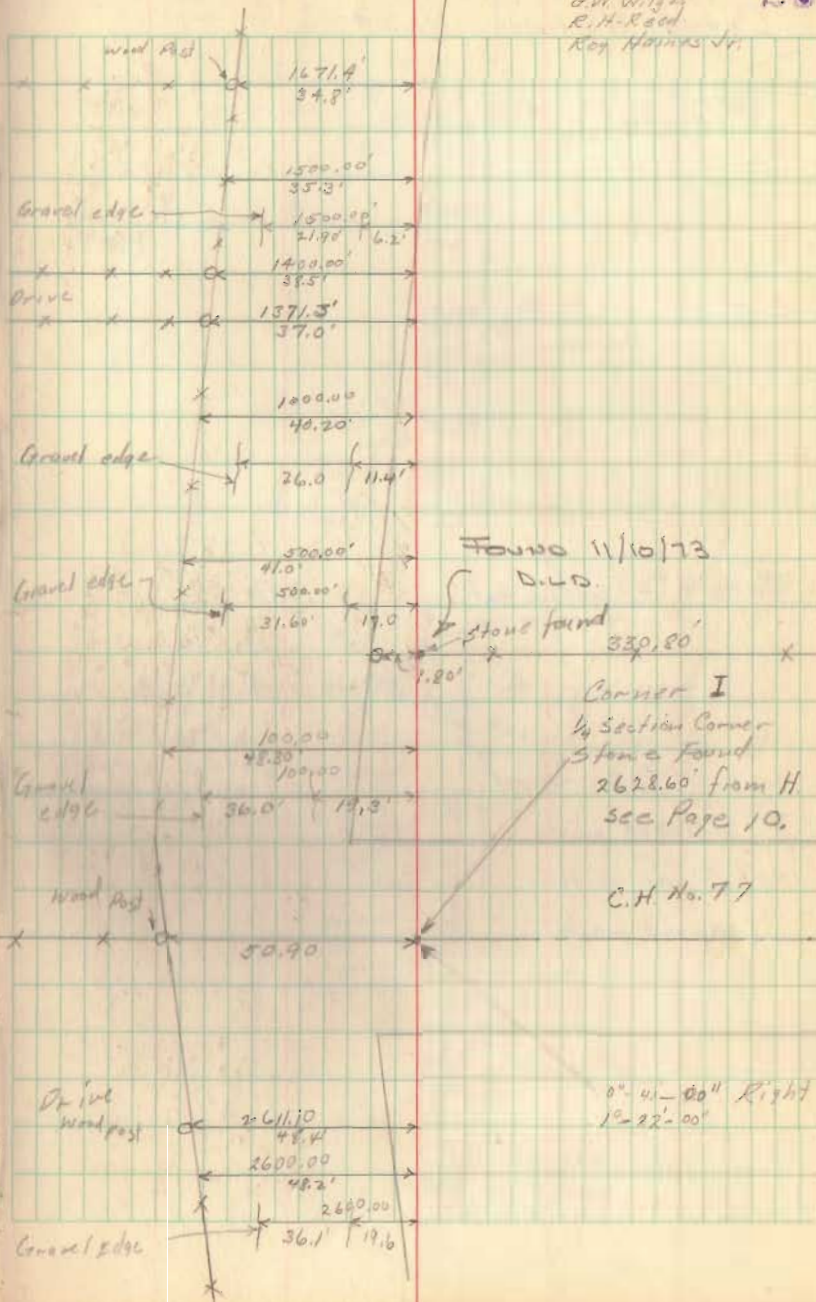


County Highway No 34

Pleasant Township

Sept. 24, 1941
E. K. Carr
G. W. Wilgus
R. H. Reed
Roy Haines Jr.

25

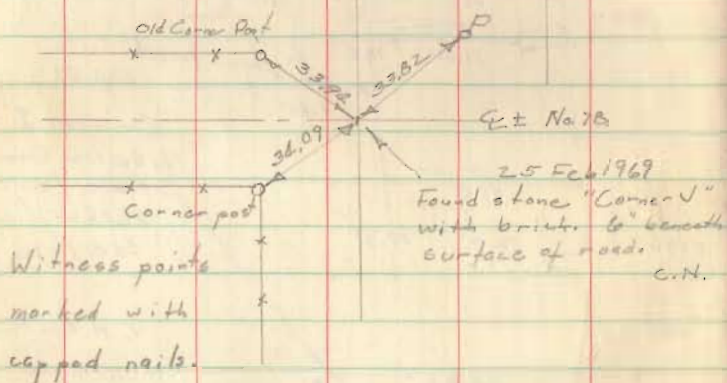


County Highway No. 34

Pleasant Township

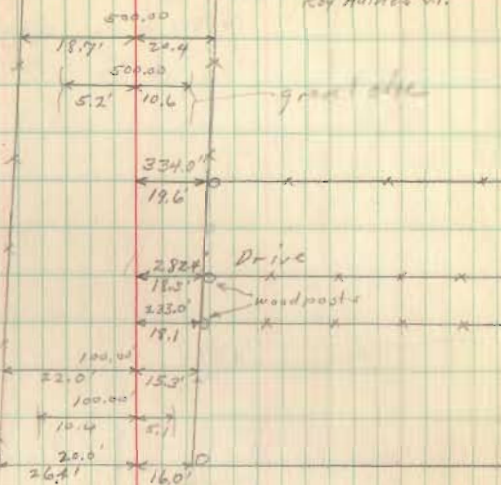
o Corner K $\frac{1}{2}$ Sec Stone
py 28

N.



Sept. 29, 1941
E. K. Lane
G. W. Wilgus
R. H. Reed
Roy Haines Jr.

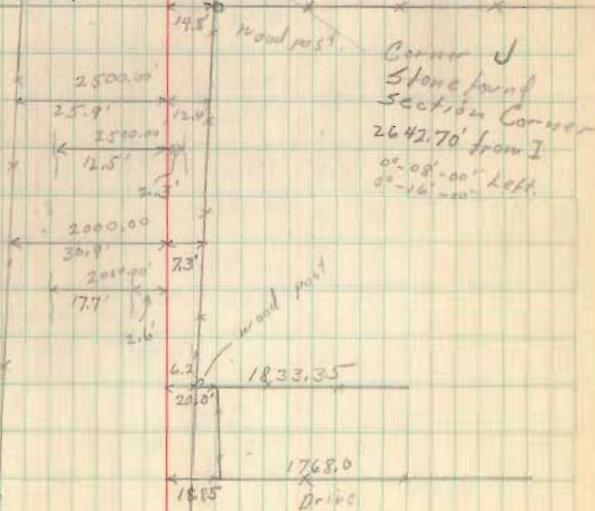
28

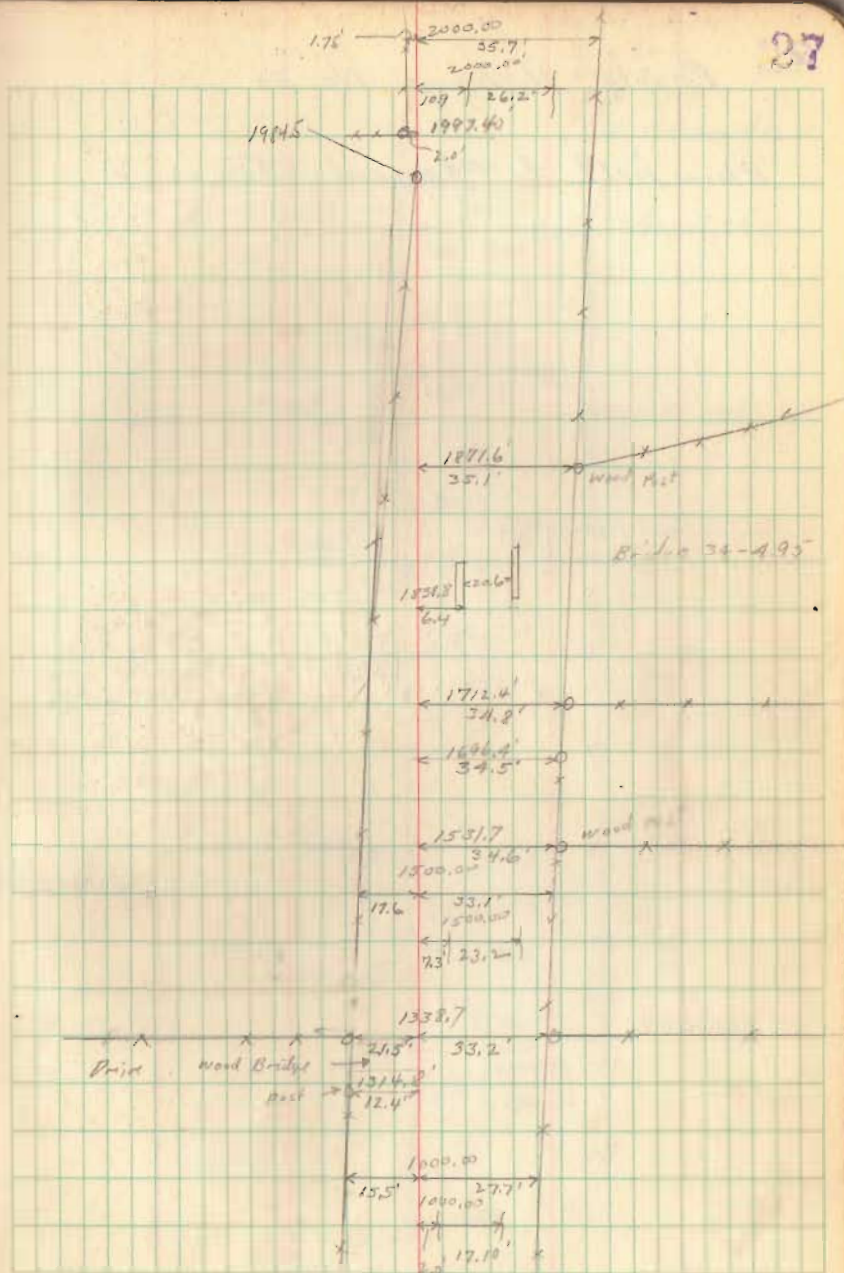


C. H. No. 78

Not fence

2622.5'





County Highway No. 34

Bloomfield & Pleasant Townships

Sept. 24, 1941

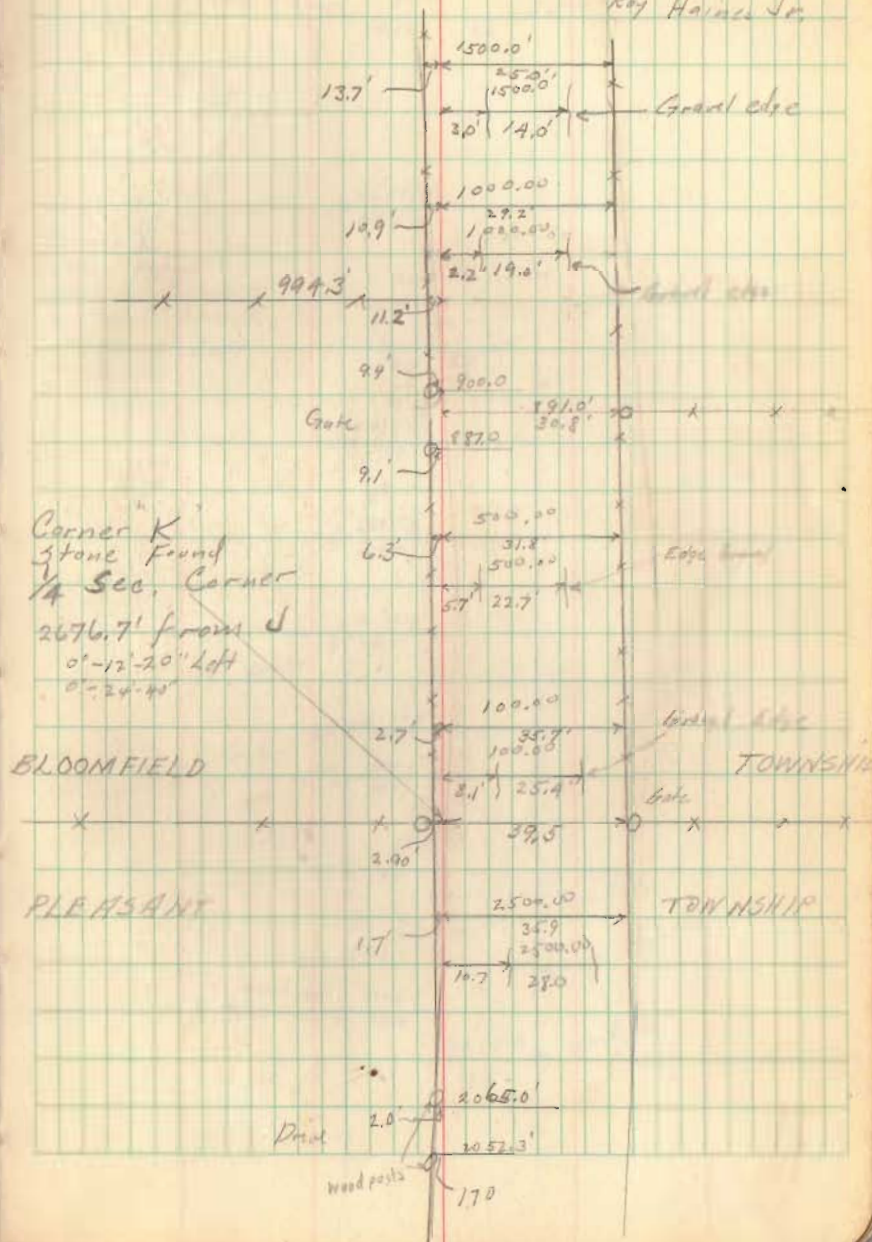
E. K. Corc

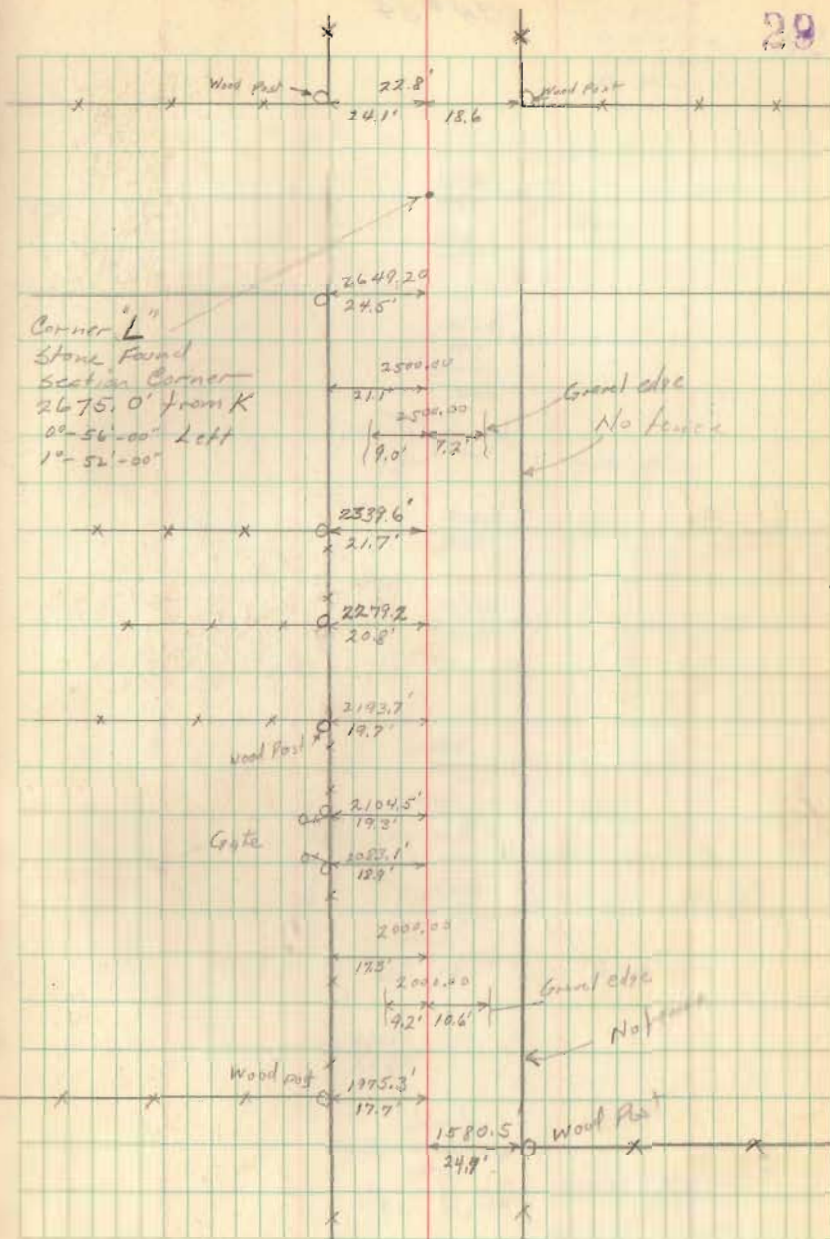
G. W. N. Gou

R. H. Reed

Ray Haines, Jr.

28

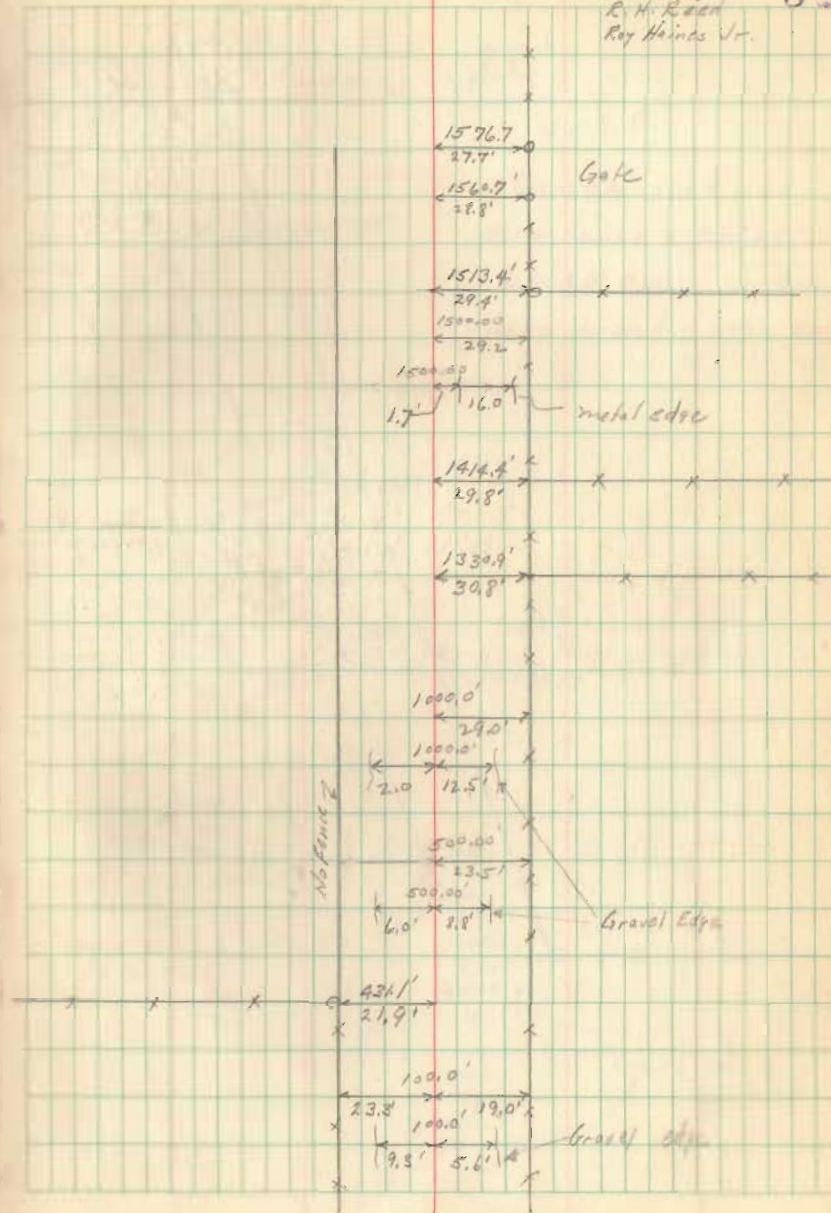


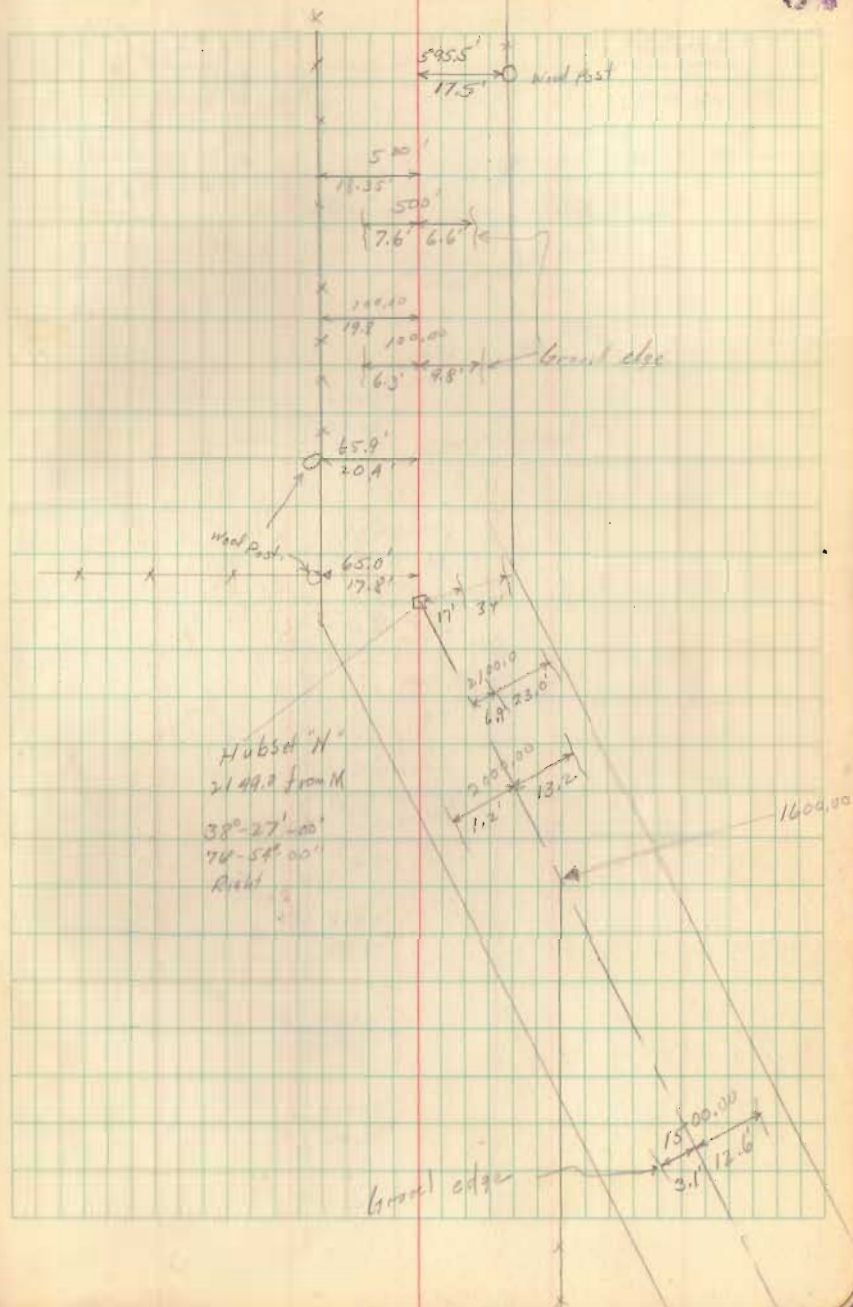
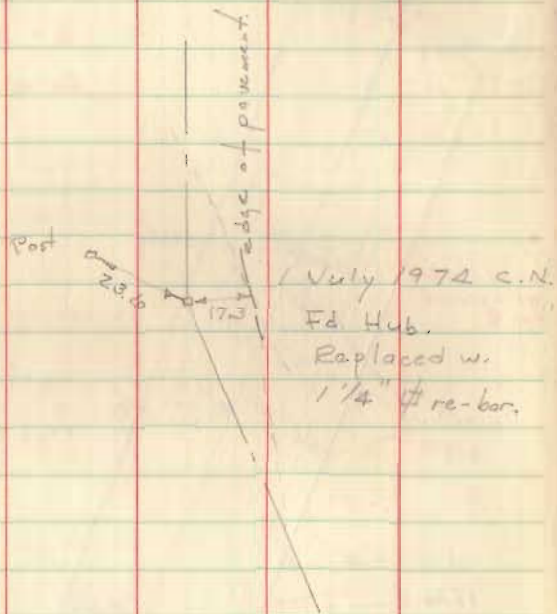


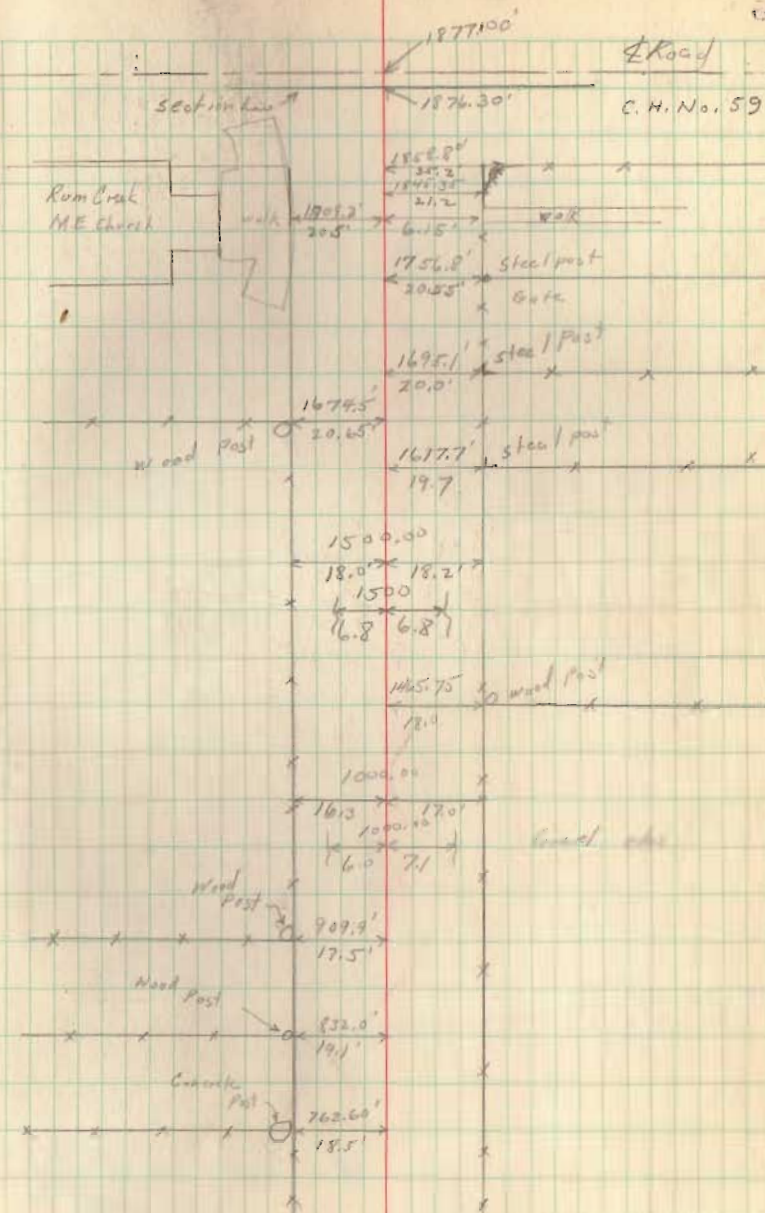
CN #34

Sept. 29, 1951
 E. K. Cook
 G. W. Wilgus
 R. M. Reed
 Roy Hinds Jr.

39







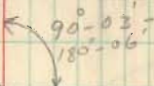
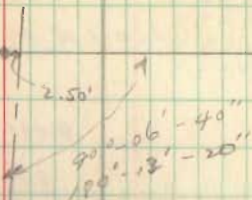
CH#34

36

Stone Found
Section
2498.9



1328.90'
from 1/4 cor



C.H 34

23

to Michigan
Section Line

CH 34

Iron Pin $\frac{1}{4}$ Rod

Iron Pin (found)
 $\frac{1}{4}$ Sec Cor

CH 23

5.1'