

Road #24  
Pleasant TP.

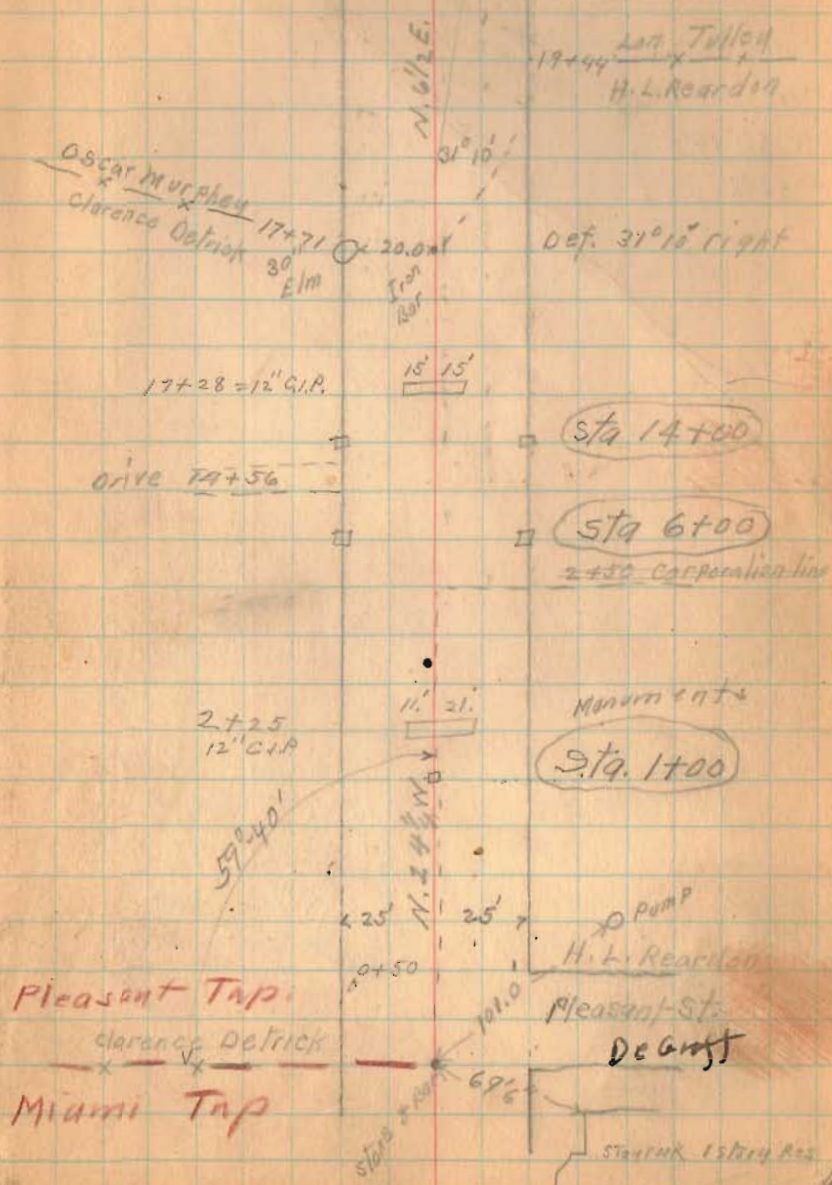
FB 516

	May 29, 30	June 2-30	" 3-30	" 4-30
J. Crane				
A.M. Renick	1	1	1	1
Harold Taylor	1	1	1	1
H.L. Reardon	x	x	1/2	1/2
Jack Richardson			1/2	1/2
Lunches	1.50	1.50	1.50	1.50

Filed June 4

Sec. 30-20' - 1.1586 x 25 = 28.96

1319  
INDEXED ON MAP





FB 516

64

Def. 02°-38' left

12°-38'

N 5 3/4 E

Laura Denlinger  
x x  
Lyda Detrick

con. Post

24.5

41+94

Stone

(42+50) Min.

A.W. Dealinger

41+74 2 Road 43  
(see Book 415 Page 90)

L.E. Detrick

(41+00) Min

(35+00) Min

15' Ash

47'

Drive 33+05

32+68-10' C.I.P.

14' 15'

N. 8 1/4 E.

1°30'

(30+00)

Lyda Detrick  
x x  
Oscar Murphy

28+65

Iron Bar

Def. 01° 30' Rt.  
L.E. Detrick

28+65

A.C. Tully

(28+40)

Murphy Drive 22+77

(21+00) Min

(1319)  
INDEXED ON MAP

FB 516

65

Def. 33°-31' left

33°31'

N. 28 1/2 W.

64+00 Mon

15.1' 10' = 0' W. Oak N.E

Hub

62+41.8

54.0'

12' Apple East

61+50 Mon

60+21 Drive

56+40 Drive

N. 5 3/4 E.

D.W. Stewart  
54+94 X X  
R.W. Denlinger

54+00 Mon

P.A. Shoe  
X X 53+49  
Laura Denlinger

52+42 = 10" C.I.P.

10' 20'

48+68 Drive

48+00 Mon

43+69 = 16" C.I.P.

20' 18'

1319  
INDEXED ON MAP



FB 516

66

Drive 93+10

91+00 Mon  
1610  
90+29 drive  
Pat  
200'

88+51-8" G.P.

13 16'

N 28 1/2 W

86+27-10" G.P.

10 10'

C.F. Hengstler

X X 77+60

Omer Hengstler

75+53 drive

J.L. Hengstler  
84+83 X X

O.L. Stewart

82+00 Mon

76+00 Mon

75+71

con fence 20.5'

N 28 1/2 W

Omer Hengstler

X X 71+52

P.H. Shoo

I.A.H.

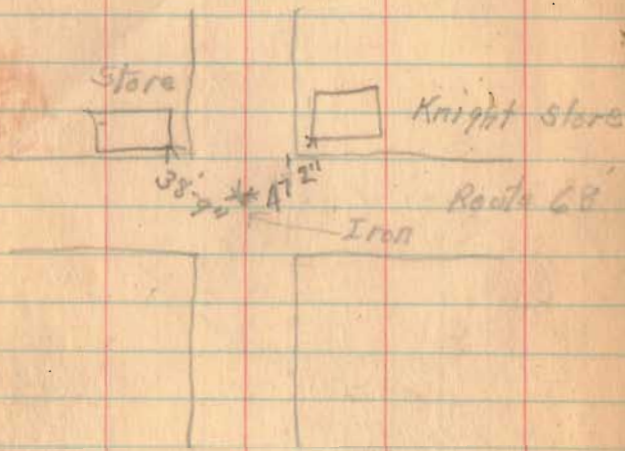
70+00 Mon

1319  
INDEXED ON MAP

FB 516

Road. 24

35.25 W. of Mon.



100.60

117+61.6

117+53.7
6.41
93.7

117+53.7
115+81
1.26

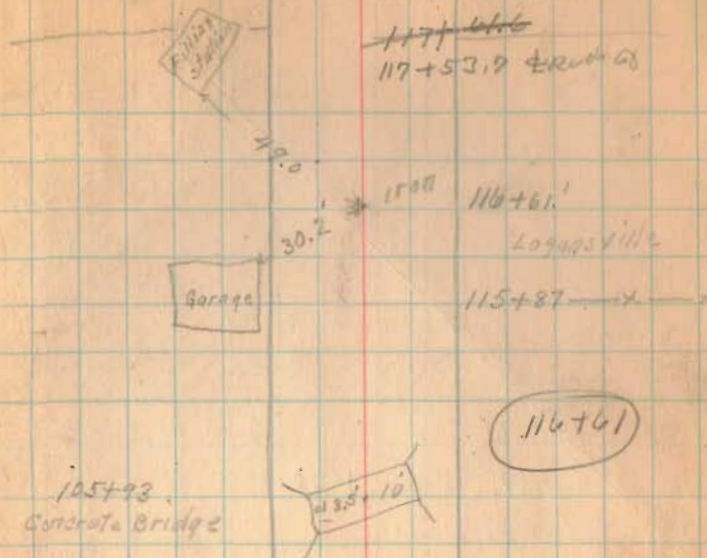
INDEXED ON MAP

1019

117+54 & Route 68 67

~~117+61.6~~

117+53.7 & Route 68



Logansville

115+87

116+61

105+93  
Concrete Bridge

11.26 W.

109+00

2° 30'

Def 02° - 30' Right

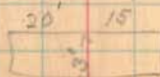
M. DeWese  
x x 100+74  
C. E. Hengstler

F. L. Kinsinger  
100+74 x  
J. L. Hengstler

stake

100+50 Mon

99+55 & Bridge  
3x5' stone box



(Continued on Page 76)

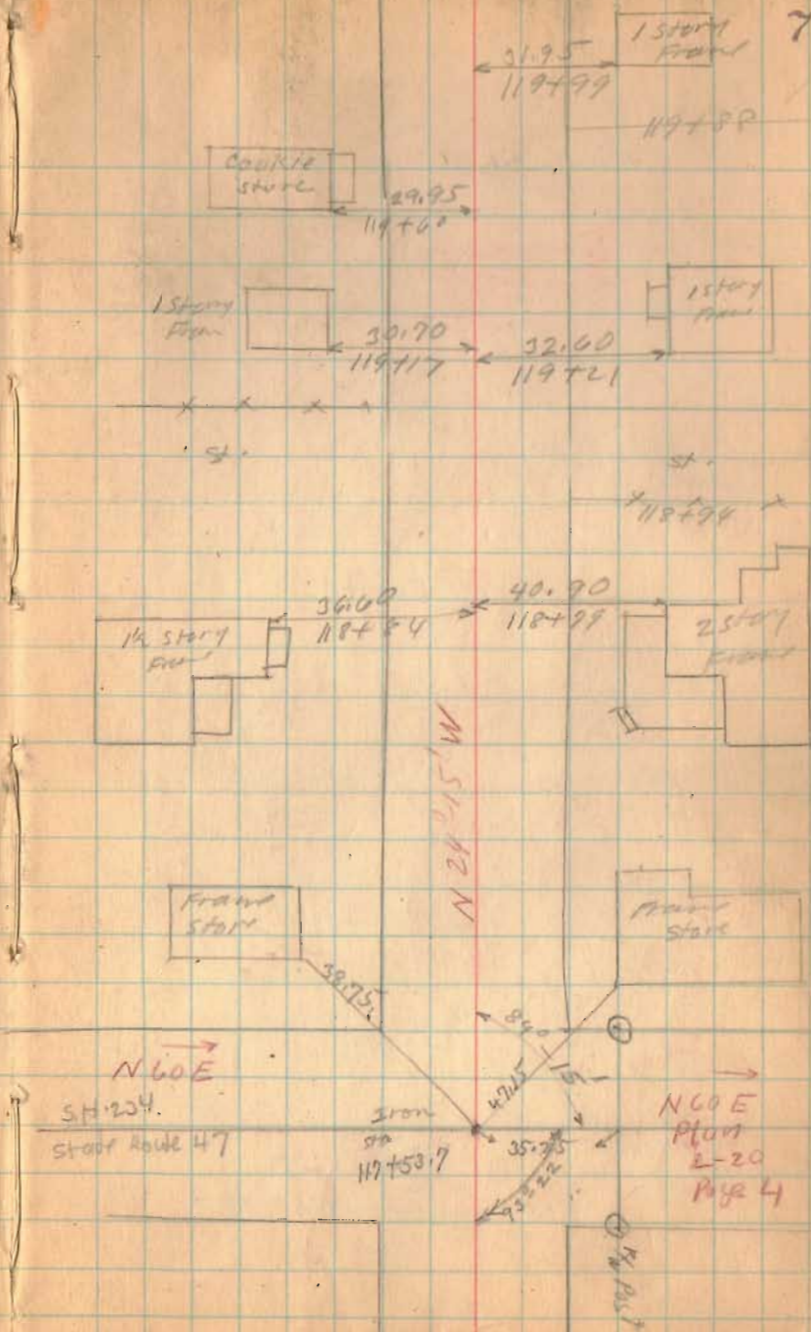


FB 516

Road 24

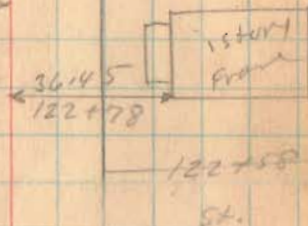
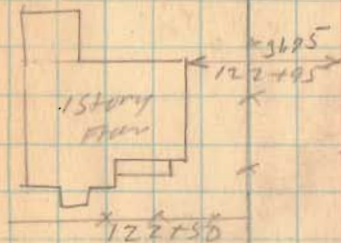
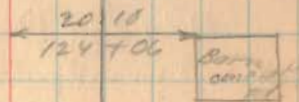
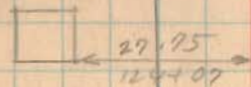
Continued from Page 67

76

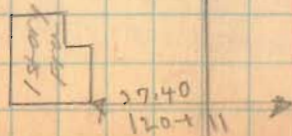


FB 516

Road 29



120+72  
Allen  
120+54



1319

INDEXED ON MAP



FB 516

Road. 24

138+00

133+00

129+00

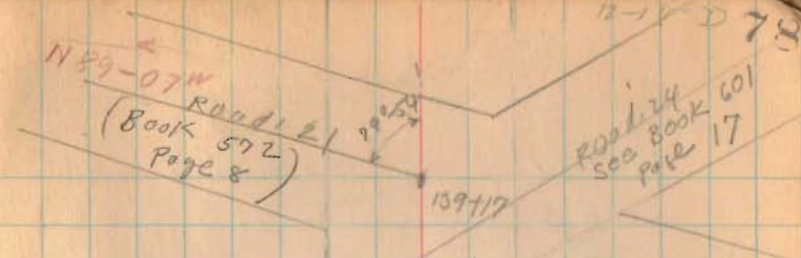
Movement 30' from 4

1319

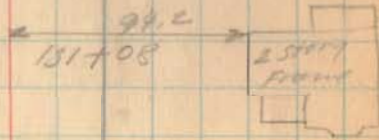
INDEXED ON MAP

N 89-07 W

(Book 572  
Page 8)

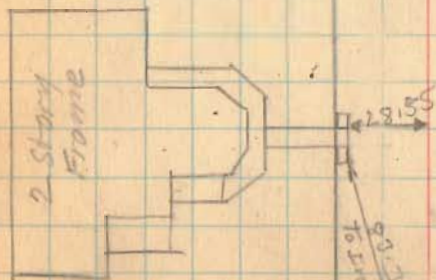
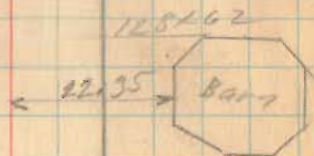


Length 13917 feet  
" 2.6357 Miles



N 92-13 W

100x22



To Iron at 200'



FB 713

C.R. 2A  
Pleasant Twp.  
Logan Co., Ohio

62+39.87 - P.I. - Fd. 1" dia iron bar -

Don't know where this came  
from but is close to where I  
calculated the hub should be  
so we used it. - Ref: F.B.K.#

516, pg. 45

33°-34'-11" Lt.

41+95.11 - P.I. - Fd. 3/4" mag nail over  
stone w/ mag nail straddles  
(circa 2007) - replaced mag  
nail over stone with a  
R.R. spike.

2°-38'-00" Lt.

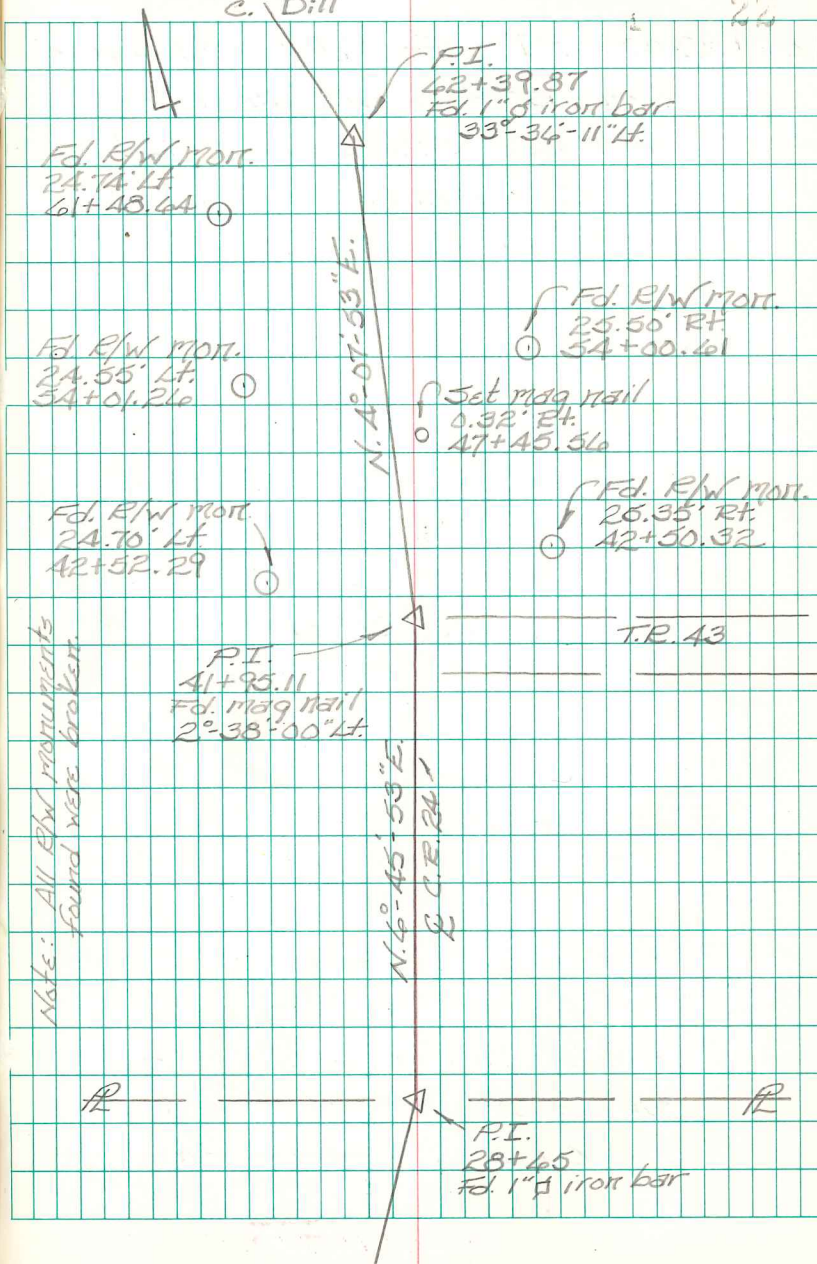
28+65 - P.I. - Fd. 1" square iron  
bar - Ref: F.B.K.# 516,  
pg. 4A - Start of this  
survey.

INDEXED ON MAP

1319

B. Simmons  
G. Dappert  
C. Dill

Aug. 08



FB 713

C.R. 2A  
Pleasant Twp.  
Logan Co., Ohio

84+83.00 - P.I. - Fd.  $\frac{1}{4}$ " x 1" rectangular  
iron bar - Shown as a P.O.T.  
in F.B.K. # 516, pg. 46 - Ref:  
Bk. C, pg. 325.  
 $0^{\circ}-18'-49"$  Lt.

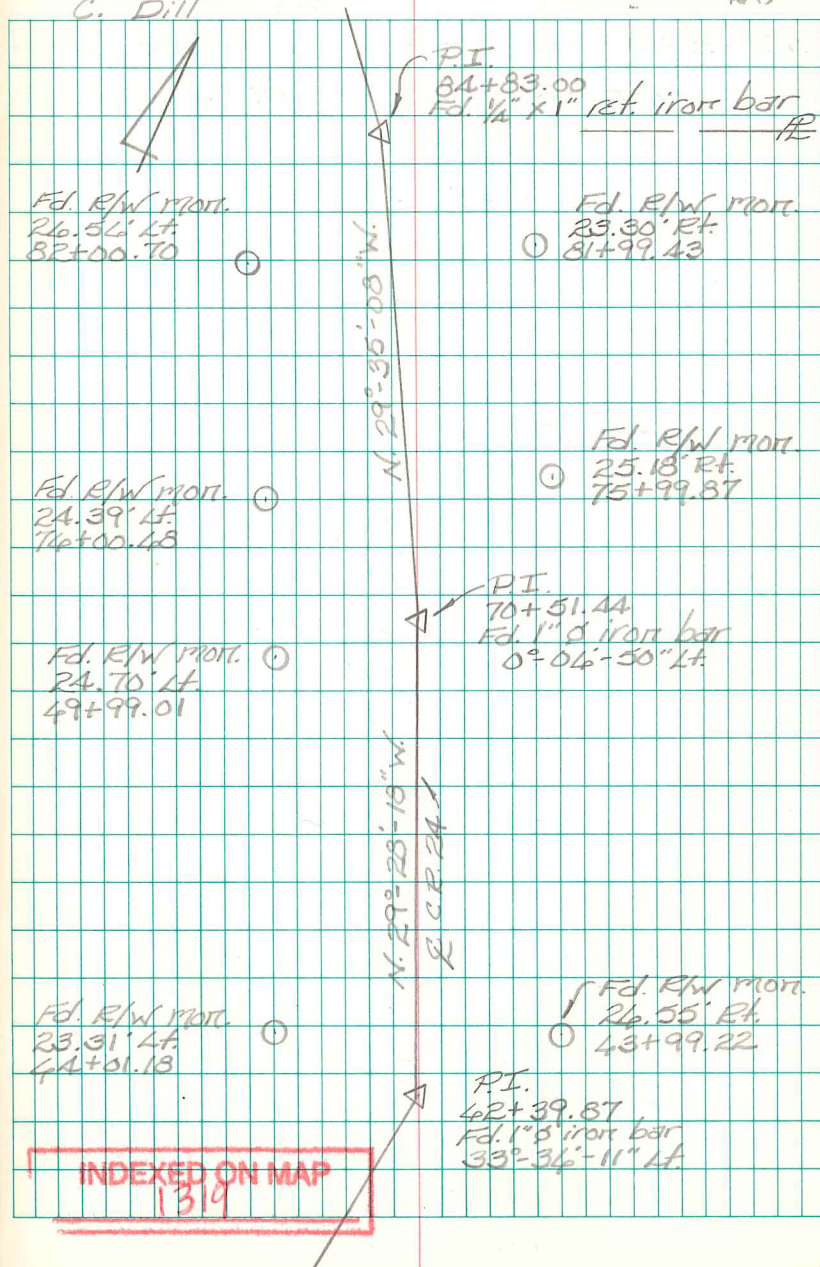
70+51.44 - P.I. - Fd. 1" dia. iron bar -  
Shown as a P.O.T. @ Sta.  
71+52 (?) in F.B.K. # 516, pg. 46 -  
Ref: Bk. C, pg. 325  
 $0^{\circ}-06'-50"$  Lt.

42+39.87 - P.I. - Fd. 1" dia. iron bar -  
Don't know where this came  
from but is close to where I  
calculated the hub should be  
so we used it. - Ref: F.B.K. #  
516, pg. 45.  
 $33^{\circ}-36'-11"$  Lt.

B. Simmons  
G. Dappert  
C. Dill

Aug. 08

23





FB 713

C.R. 2A  
Pleasant Twp.  
Logan Co., Ohio

117+53.03 - P.I. - Fd. 1" dia. iron bar -  
intersection C.R. 2A w/ S.R.  
47

1°-24'-59" Rt.

116+60.46 - P.O.T. - Fd. 3/4" square  
iron bar - Ref: F.Bk. # 516,  
pg. 47

100+73.28 - P.I. - Fd. hub - shown  
@ Sta. 100+74 in F.Bk. # 516,  
pg. 47 - Drove 5/8" dia.  
capped rebar through hub  
and installed a monument  
box.

2°-27'-09" Rt.

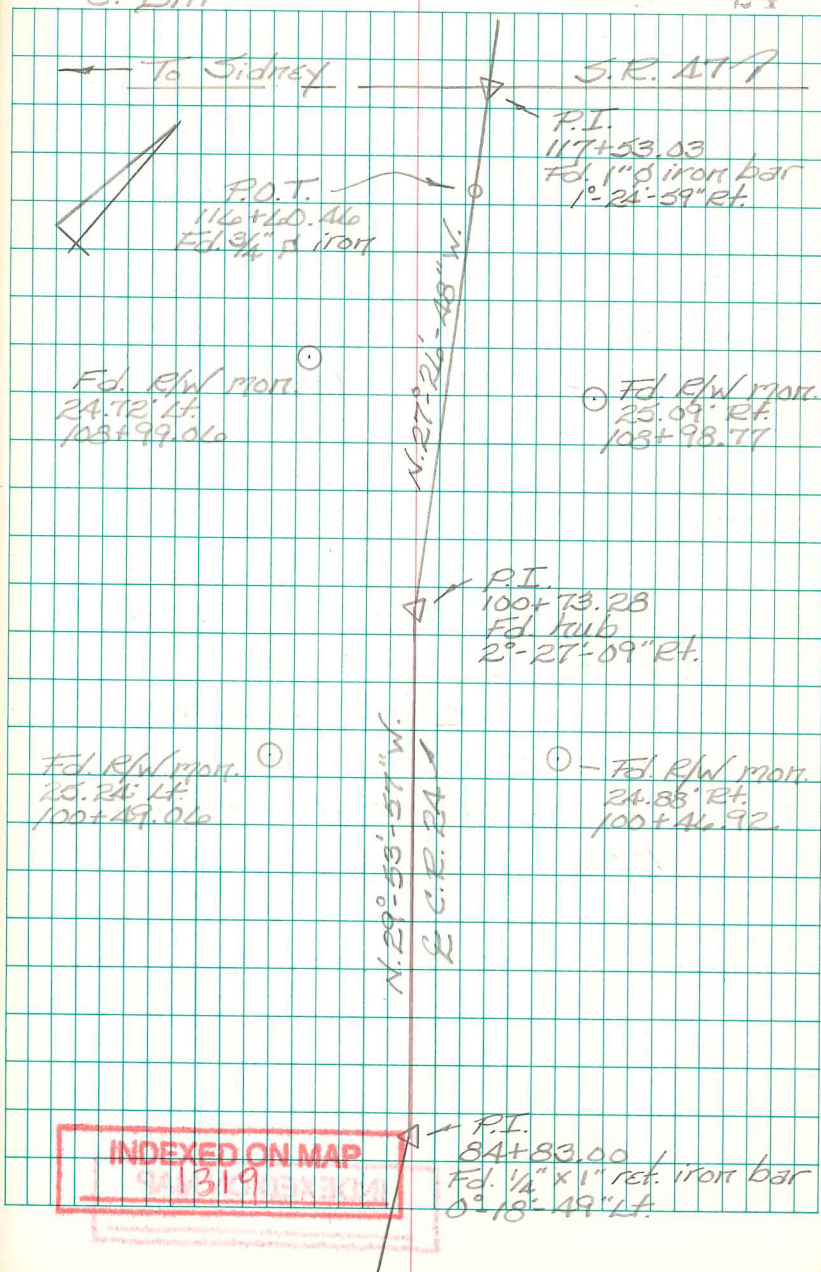
84+83.00 - P.I. - Fd. 1/4" x 1" rectangular  
iron bar - shown as a P.O.T.  
in F.Bk. # 516, pg. 66 - Ref:  
Bk. C, pg. 325.

0°-18'-49" Lt.

B. Simmons  
G. Dappert  
C. Dill

Aug. 08

24



FB 713

C.R. 2A  
Pleasant Twp.  
Logan Co., Ohio  
Note

The notes found in F.B.K. #516 show the  $\mathcal{L}$  of C.R. 2A between Stas. 42+41.8 & Stas. 100+74 as being a straight line.

We found irons @ Sta. 71+52 and Sta. 84+83 plus an old hub @ Sta 100+74. These points don't come close to being on line between Sta. 42+41.8 & Sta. 100+74. I believe the two irons found at Sta. 71+52 & Sta. 84+83 are the same irons shown in Bk. C, pg. 325. Bk. C shows these pts. as being the center of C.R. 2A which is what I have done with this survey.

C.P.D.

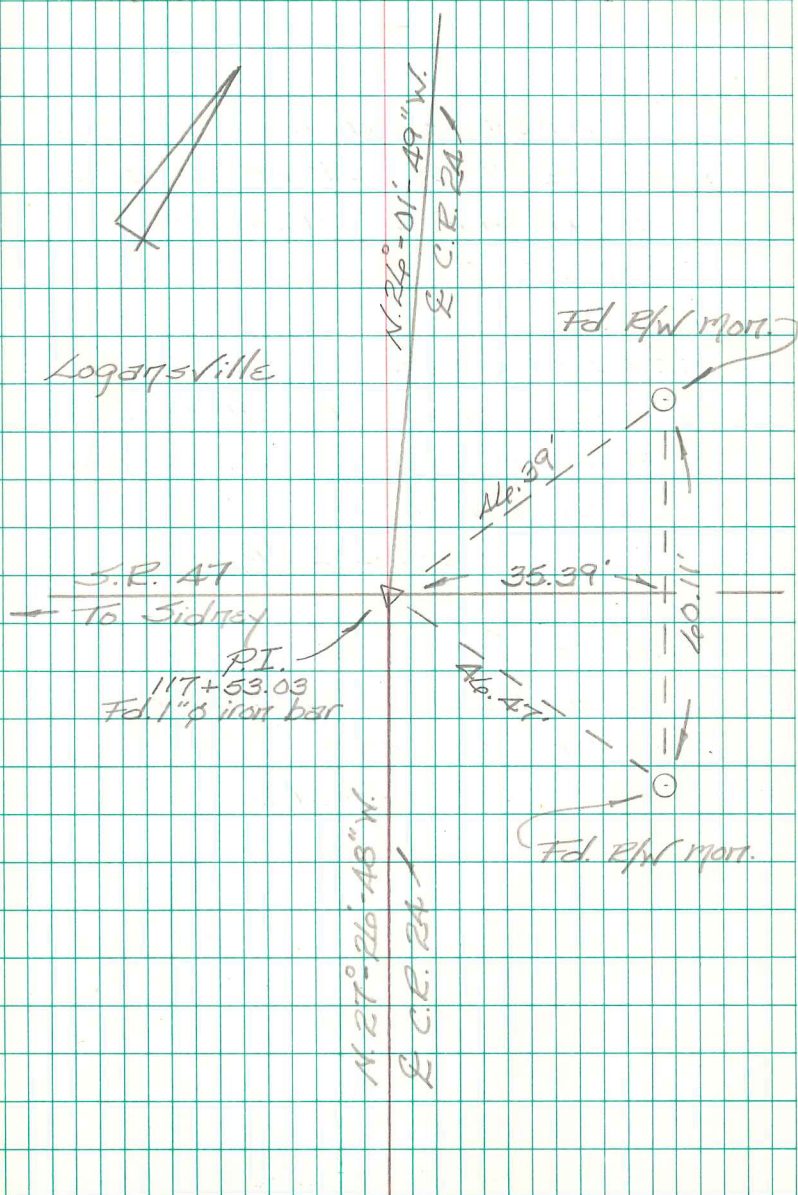
INDEXED ON MAP

139

B. Simmons  
G. Dappert  
C. Dill

Aug. 08

25





FB 713

C.R. 2A  
Pleasant Twp.  
Logan Co., Ohio

138+15.40 - P.I. - Fd. harrow tooth on  
extended back tangent of C.R. 2A -  
Intersection extended E C.R. 2A  
w/ E C.R. 21 - shown as Sta.  
139+17 in F.Bk. # 516 pg. 78 &  
F.Bk. # 401, pg. 17.

137+95.40 - P.I. - Fd. hub - Drove  $\frac{5}{8}$ "  
dia. capped rebar through hub -  
shown as Sta. 138+97 in F.Bk. #  
401, pg. 17.  
 $60^{\circ}-32'-43"$  Rt.

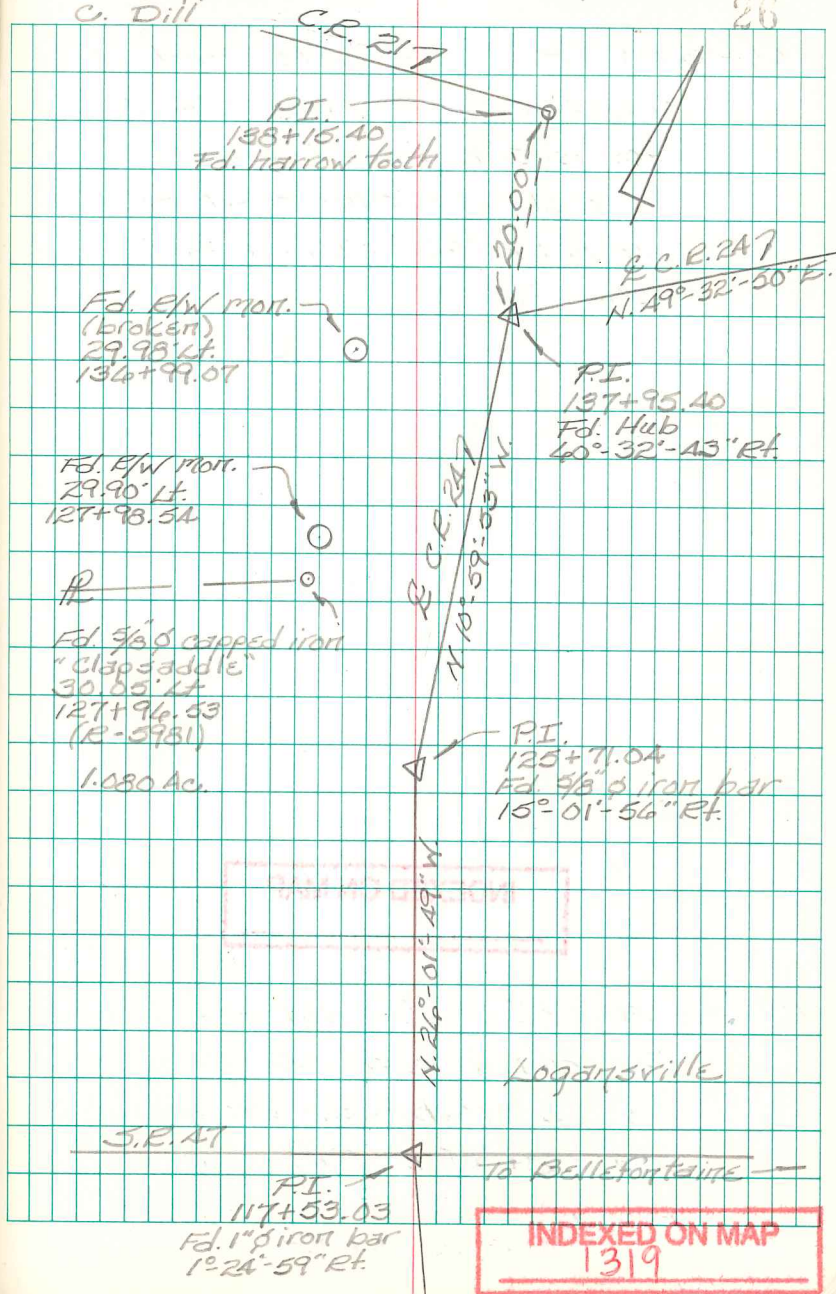
125+71.04 - P.I. - Fd.  $\frac{5}{8}$ " dia. iron bar -  
shown as Sta. 124+72 in  
F.Bk. # 516, pg. 77 (stationing?)  
 $15^{\circ}-01'-56"$  Rt.

117+53.03 - P.I. - Fd. 1" dia. iron bar -  
Intersection E S.R. 47 w/ E  
C.R. 2A (Center St. - Logansville) -  
shown as Sta. 117+53.7 in F.Bk. #  
516, pg. 76.  
 $1^{\circ}-24'-59"$  Rt.

B. Simmons  
G. Dappert  
C. Dill

Aug 2013

26



FB 713

C.R. 2A  
Pleasant Twp.  
Logan Co., Ohio

146+35.53 - P.I. - Fd. remnant of  
old hub  $\approx$  2A" deep - Set  
5/8" dia. capped rebar  
through remnant - shown  
as Sta. 146+43 in F.B.K. #  
601, pg. 18.

34°-29'-34" Lt.

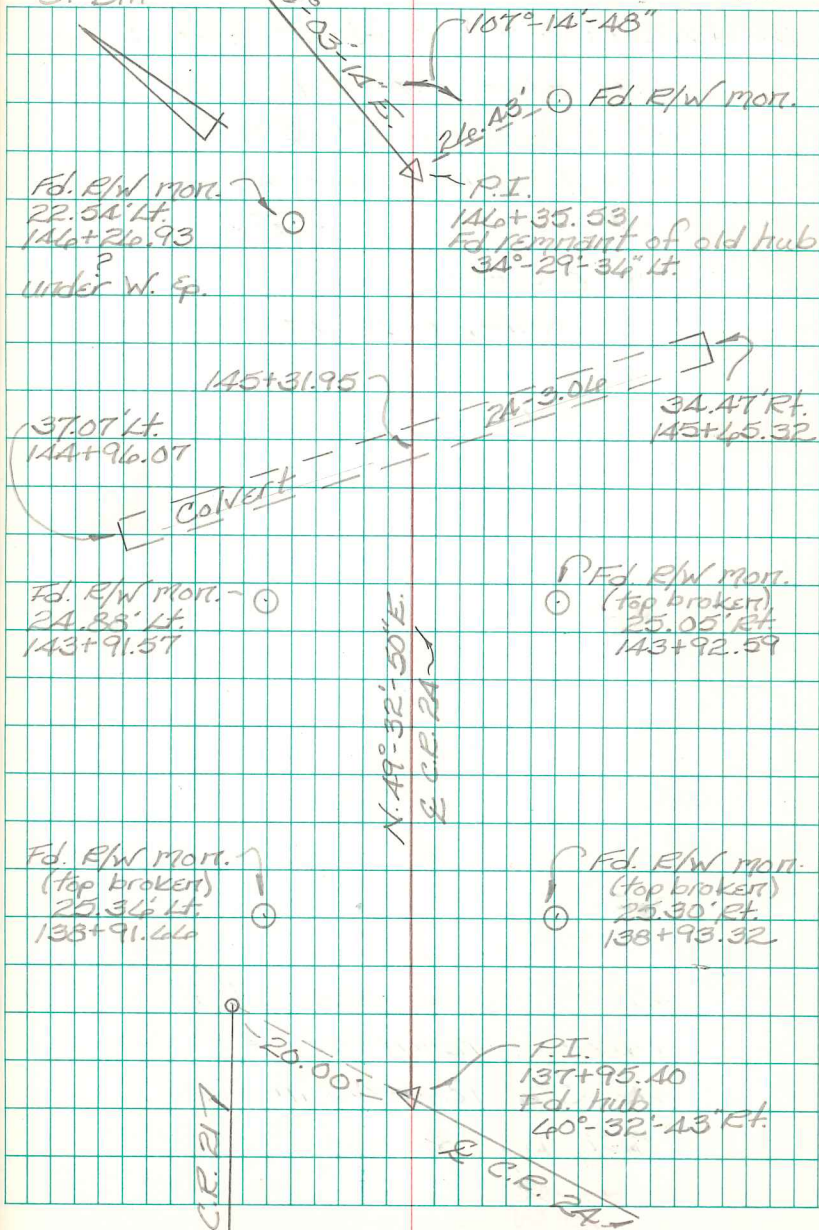
INDEXED ON MAP  
1319

137+95.40 - P.I. - Fd. hub - Drove  
5/8" dia. capped rebar  
through hub - shown as  
Sta. 138+97 in F.B.K. # 601,  
pg. 17.  
60°-32'-43" Rt.

B. Simmons  
G. Dappert  
C. Dill

Aug. 2013

21





FB 713

C.E. 2A  
Pleasant Twp.  
Logan Co., Ohio

180+66.94 - P.I. - Fd. mag nail  
over stone w/ mag nail  
straddles - Fd. R.R. spike  
beside stone for magnetic  
attraction - Set R.R. spike  
over stone to surface  
replacing mag nail - mag  
nail straddles & R.R. spike  
for attraction are still  
there - Shown as Sta.  
181+75.5 in F.B.K. # 401, pg. 20  
0°-02'-55" Lt.

146+35.53 - P.I. - Fd. remnant of  
old hub ≈ 2A" deep - Set  
5/8" dia. capped rebar  
through remnant - Shown  
as Sta. 146+43 in F.B.K. #  
401, pg. 18.  
34°-29'-36" Lt.

B. Simmons  
G. Dappert  
C. Dill

Aug. 2013

28

Fd. R/W Mon. 7  
25.32' Lt.  
180+90.92

Fd. R/W Mon.  
(top broken)  
25.00' Lt.  
143+17.16

Fd. R/W Mon.  
(top broken)  
25.03' Lt.  
153+92.16

Fd. R/W Mon. 7  
24.88' Lt.  
153+92.77

Fd. R/W Mon.  
24.81' Lt.  
150+93.05

P.I.  
180+66.94  
Fd. Stone  
0°-02'-55" Lt.

Fd. R/W Mon.  
25.30' Rt.  
149+92.47

Fd. R/W Mon.  
(top broken)  
24.83' Rt.  
153+92.20

Fd. R/W Mon.  
(top broken)  
25.41' Rt.  
150+92.05

P.I.  
146+35.53  
Fd. remnant of old hub  
34°-29'-36" Lt.

N. 15°-03'-14" E.  
E.C.E. 2A

INDEXED ON MAP

319

FB 713

C.R. 24  
Pleasant Twp.  
Logan Co., Ohio

197+96.60 - P.I. - Fd.  $\frac{1}{2}$ " square  
iron bar - End of this  
survey - Shown as Sta.  
199+06 in F.B.K. # 401, pg. 22.

193+94.15 - P.I. - Fd.  $\frac{3}{4}$ " dia.  
bar - This iron shown as  
a P.O.T. at Sta. 195+03 in  
F.B.K. # 401, pg. 21.  
 $0^{\circ}01'21''$  Lt.

189+80.85 - P.I. - Fd.  $\frac{3}{4}$ " dia iron  
bar w/ ring - Shown as Sta.  
190+90 in F.B.K. # 401, pg. 21.  
 $0^{\circ}07'38''$  Lt.

180+46.94 - P.I. - Fd mag nail over  
stone w/ mag nail straddles -  
Fd. R.R. Spike beside stone  
for magnetic attraction - Set  
R.R. Spike over stone to surface  
replacing mag nail - mag nail  
straddles & R.R. Spike for  
attraction are still there - Shown  
as Sta. 181+75.5 in F.B.K. # 401, pg. 20.  
 $0^{\circ}02'55''$  Lt.

B. Simmons  
G. Dappert  
C. Dill

Aug. 2013

29

