

7-22-2000 SM OLW

# Lee Surveying and Mapping Co., Inc.

Land Surveys • Topography • Subdivisions • Construction Layout

117 N. Madriver St.  
Bellefontaine OH 43311



Phone: (937) 593-7335  
Fax: (937) 593-7444

## TRIPLE T. ENTERPRISES, INC. 3.750 ACRES

Lying in Virginia Military Survey 4813, Perry Township, Logan County, Ohio.

Being out of the Triple T. Enterprises, Inc. original 67.75 acre tract as deeded and described in Volume 352, Page 708 of the Logan County Records of Deeds and being more particularly described as follows:

Beginning at a railroad spike found on the south line of Virginia Military Survey 4813 at the intersection of the center-lines of Township Road 141 and County Highway 142.

THENCE, with the center-line of County Highway 142 (60 feet wide), N 11°-00'-00" E, a distance of 506.49 feet to a railroad spike found at the TRUE POINT OF BEGINNING.

THENCE, with the north line of the Keith Hinton 5.538 acre tract, (O.R. 314, Pg. 429), N 79°-00'-00" W, a distance of 285.09 feet to a 5/8 inch iron rod set, passing a 5/8 inch iron rod found at 30.00 feet.

THENCE, N 16°-56'-52" W, a distance of 472.74 feet to a 5/8 inch iron rod set.

THENCE, with the south line of the Brett A. Barnes 7.65 acre tract, (O.R. 418, Pg. 276), S 78°-07'-03" E, a distance of 506.71 feet to a harrow tooth found, passing a 5/8 inch iron rod found at 476.71 feet.

THENCE, with the center-line of County Highway 142, S 11°-00'-00" W, a distance of 409.80 feet to the point of beginning.

Containing 3.750 acres, of which 0.282 acre is within the highway right-of-way.

The basis for bearings is the center-line of County Highway 142, being N 11°-00'-00" E, and all other bearings are from angles and distances measured in a field survey by Lee Surveying and Mapping Co., Inc. on February 8, 2000.

Description prepared by:

A handwritten signature in black ink, appearing to read 'Jeffrey I. Lee', is written over a faint, larger signature.

Jeffrey I. Lee  
Professional Surveyor 6359  
February 11, 2000



ORIGINAL STAMP IN GREEN

L-2246



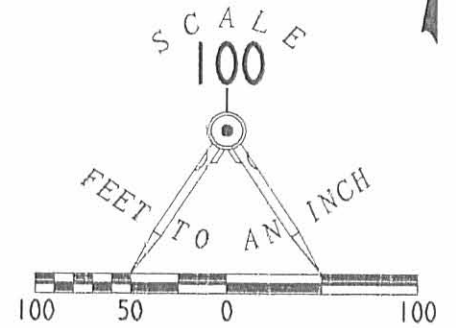
REC'D 2-22-00 SWM CLK

BRETT A. BARNES  
7.65 ACRES  
O.R. 418, PG. 276

TRIPLE T. ENTERPRISES, INC  
ORIG. 67.75 ACRES  
VOL. 352, PG. 708

3.750 ACRES  
OF WHICH 0.282 ACRE IS WITHIN  
THE HIGHWAY RIGHT-OF-WAY

KEITH HINTON AND  
SHEILA M. HINTON  
5.538 ACRES  
O.R. 314, PG. 429



LEGEND

- 5/8" IRON ROD SET
- 5/8 INCH IRON ROD FOUND
- ⊗ HARROW TOOTH FOUND
- ⊗ RAILROAD SPIKE FOUND

SURVEY OF 3.750 ACRES OUT OF  
THE TRIPLE T. ENTERPRISES, INC.  
ORIGINAL 67.75 ACRE TRACT  
VOLUME 352, PAGE 708  
VIRGINIA MILITARY SURVEY 4813  
PERRY TOWNSHIP  
LOGAN COUNTY, OHIO



SURVEYED BY:

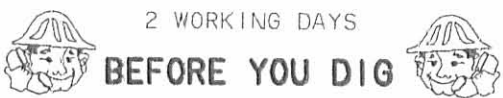
*Jeffrey I. Lee*  
JEFFREY I. LEE  
PROFESSIONAL SURVEYOR 6359  
FEBRUARY 8, 2000

COPYRIGHT 2000 BY:  
LEE SURVEYING & MAPPING CO., INC.  
117 North Madriver Street  
BELLEFONTAINE, OHIO 43311  
(937) 593-7335

D 347 THIERGAR3 L-2246-3  
THIERGAR.DAT

REFERENCES

LOGAN COUNTY ENGINEER'S FILES:  
FIELD BOOK 615, PAGES 32-36  
FIELD BOOK 707, PAGE 62  
R-2237, AND R-7879



CALL TOLL FREE **800-362-2764**  
OHIO UTILITIES PROTECTION SERVICE.

8959 IP

REC'D 4-4-96 EWM OK ✓



# Lee Surveying and Mapping Co., Inc.



Farm Surveys • Lot Surveys • Topography • Subdivisions • Construction Layout

143 EAST COLUMBUS AVENUE  
BELLEFONTAINE, OHIO 43311

(513) 593-7335  
FAX (513) 593-7444

## TRIPLE T. ENTERPRISES, INC. 6.093 ACRES Tract A

Lying in Virginia Military Survey 12103, 13528, 13557, 13558, and Virginia Military Survey 4813, Perry Township, Logan County, Ohio.

Being out of the Triple T. Enterprises, Inc. 25.5 acre and 67.75 acre tracts as deeded and described in Volume 352, Page 708 of the Logan County Records of Deeds and being more particularly described as follows:

Beginning at a railroad spike found on the intersection of center-lines of Township Road 141 and County Highway 142.

THENCE, with the center-line of County Highway 142 (60 feet wide), N 11°-00'-00" E, a distance of 1956.35 feet to a railroad spike set at the TRUE POINT OF BEGINNING.

THENCE, N 78°-07'-03" W, a distance of 1476.93 feet to a 5/8 inch iron rod set.

THENCE, with the easterly line of the David E. Wilson 84.0 acre tract (O.R. 72, Pg. 326), N 12°-28'-46" E, a distance of 180.01 feet to a 5/8 inch iron rod set.


THENCE, with the south line of the John R. Schwendenman 6.748 acre tract (O.R. 246, Pg. 651), S 78°-07'-03" E, a distance of 1472.28 feet to a railroad spike set.

THENCE, with the center-line of County Highway 142, S 11°-00'-00" W, a distance of 180.02 feet to the point of beginning.

Containing 6.093 acres of which 4.233 acres are in Virginia Military Survey 4813 with 0.124 acre within the highway right-of-way and 1.860 acres are in Virginia Military Survey 12103, 13528, 13557, 13558.

The basis for bearings is based upon the center-line of County Highway 142 being N 11°-00'-00" E, and all other bearings are from angles and distances measured in a field survey by Lee Surveying and Mapping Co., Inc. on March 22, 1996.

Description prepared by:

  
Jeffrey I. Lee  
Professional Surveyor 6359  
April 2, 1996



L 2246

ORIGINAL STAMP IN GREEN

INDEXED ON MAP  
8959 2D-1

REC'D 4-4-96 SVM JK



# Lee Surveying and Mapping Co., Inc.



Farm Surveys • Lot Surveys • Topography • Subdivisions • Construction Layout

143 EAST COLUMBUS AVENUE  
BELLEFONTAINE, OHIO 43311

(513) 593-7335  
FAX (513) 593-7444

## TRIPLE T. ENTERPRISES, INC. 6.113 ACRES Tract B

Lying in Virginia Military Survey 12103, 13528, 13557, 13558, and Virginia Military Survey 4813, Perry Township, Logan County, Ohio.

Being out of the Triple T. Enterprises, Inc. 25.5 acre and 67.75 acre tracts as deeded and described in Volume 352, Page 708 of the Logan County Records of Deeds and being more particularly described as follows:

Beginning at a railroad spike found on the intersection of center-lines of Township Road 141 and County Highway 142.

THENCE, with the center-line of County Highway 142 (60 feet wide), N 11°-00'-00" E, a distance of 1776.33 feet to a railroad spike set at the TRUE POINT OF BEGINNING.

THENCE, N 78°-07'-03" W, a distance of 1481.58 feet to a 5/8 inch iron rod set.

THENCE, with the easterly line of the David E. Wilson 84.0 acre tract (O.R. 72, Pg. 326), N 12°-28'-46" E, a distance of 180.01 feet to a 5/8 inch iron rod set.

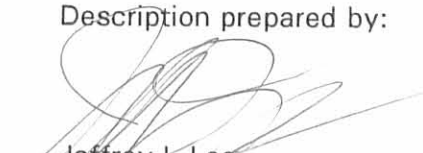
THENCE, S 78°-07'-03" E, a distance of 1476.93 feet to a railroad spike set.

THENCE, with the center-line of County Highway 142, S 11°-00'-00" W, a distance of 180.02 feet to the point of beginning.

Containing 6.113 acres of which 4.256 acres are in Virginia Military Survey 4813 with 0.124 acre within the highway right-of-way and 1.857 acres are in Virginia Military Survey 12103, 13528, 13557, 13558.

The basis for bearings is based upon the center-line of County Highway 142 being N 11°-00'-00" E, and all other bearings are from angles and distances measured in a field survey by Lee Surveying and Mapping Co., Inc. on March 22, 1996.

Description prepared by:

  
Jeffrey I. Lee  
Professional Surveyor 6359  
April 2, 1996



INDEXED ON MAP  
6359 2D2

Prac 4-4-96 8M JK ✓



# Lee Surveying and Mapping Co., Inc.



Farm Surveys • Lot Surveys • Topography • Subdivisions • Construction Layout

143 EAST COLUMBUS AVENUE  
BELLEFONTAINE, OHIO 43311

(513) 593-7335  
FAX (513) 593-7444

## TRIPLE T. ENTERPRISES, INC. 6.132 ACRES Tract C

Lying in Virginia Military Survey 12103, 13528, 13557, 13558, and Virginia Military Survey 4813, Perry Township, Logan County, Ohio.

Being out of the Triple T. Enterprises, Inc. 25.5 acre and 67.75 acre tracts as deeded and described in Volume 352, Page 708 of the Logan County Records of Deeds and being more particularly described as follows:

Beginning at a railroad spike found on the intersection of center-lines of Township Road 141 and County Highway 142.

THENCE, with the center-line of County Highway 142 (60 feet wide), N 11°-00'-00" E, a distance of 1596.31 feet to a railroad spike set at the TRUE POINT OF BEGINNING.

THENCE, N 78°-07'-03" W, a distance of 1486.23 feet to a 5/8 inch iron rod set.

THENCE, with the easterly line of the David E. Wilson 84.0 acre tract (O.R. 72, Pg. 326), N 12°-28'-46" E, a distance of 180.01 feet to a 5/8 inch iron rod set.

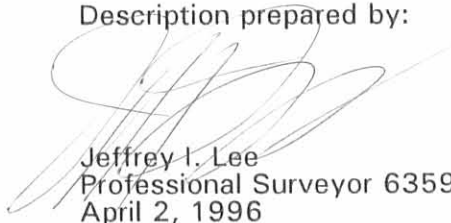
THENCE, S 78°-07'-03" E, a distance of 1481.58 feet to a railroad spike set.

THENCE, with the center-line of County Highway 142, S 11°-00'-00" W, a distance of 180.02 feet to the point of beginning.

Containing 6.132 acres of which 4.277 acres are in Virginia Military Survey 4813 with 0.124 acre within the highway right-of-way and 1.855 acres are in Virginia Military Survey 12103, 13528, 13557, 13558.

The basis for bearings is based upon the center-line of County Highway 142 being N 11°-00'-00" E, and all other bearings are from angles and distances measured in a field survey by Lee Surveying and Mapping Co., Inc. on March 22, 1996.

Description prepared by:

  
Jeffrey I. Lee  
Professional Surveyor 6359  
April 2, 1996



ORIGINAL STAMP IN GREEN

INDEXED ON MAP  
8959 20-3

REC'D 4-4-96 SWM OK ✓



# Lee Surveying and Mapping Co., Inc.



Farm Surveys • Lot Surveys • Topography • Subdivisions • Construction Layout

143 EAST COLUMBUS AVENUE  
BELLEFONTAINE, OHIO 43311

(513) 593-7335  
FAX (513) 593-7444

## TRIPLE T. ENTERPRISES, INC. 6.112 ACRES Tract D

Lying in Virginia Military Survey 12103, 13528, 13557, 13558, and Virginia Military Survey 4813, Perry Township, Logan County, Ohio.

Being out of the Triple T. Enterprises, Inc. 25.5 acre and 67.75 acre tracts as deeded and described in Volume 352, Page 708 of the Logan County Records of Deeds and being more particularly described as follows:

Beginning at a railroad spike found on the intersection of center-lines of Township Road 141 and County Highway 142.

THENCE, with the center-line of County Highway 142 (60 feet wide), N 11°-00'-00" E, a distance of 1416.29 feet to a railroad spike set at the TRUE POINT OF BEGINNING.

THENCE, N 78°-07'-03" W, a distance of 1290.86 feet to a 5/8 inch iron rod set.

THENCE, with the lines of the Michael D. Marmon 6.424 acre tract (O.R. 245, Pg. 796) the following two courses:

N 12°-28'-46" E, a distance of 6.86 feet to a 5/8 inch iron rod found.

N 77°-08'-27" W, a distance of 200.00 feet to a 5/8 inch iron rod set.

THENCE, with the easterly line of the David E. Wilson 84.0 acre tract (O.R. 72, Pg. 326), N 12°-28'-46" E, a distance of 169.75 feet to a 5/8 inch iron rod set.

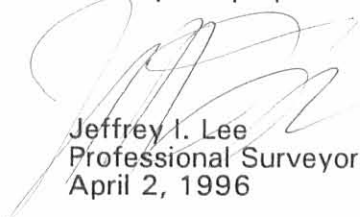
THENCE, S 78°-07'-03" E, a distance of 1486.23 feet to a railroad spike set.

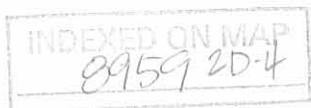
THENCE, with the center-line of County Highway 142, S 11°-00'-00" W, a distance of 180.02 feet to the point of beginning.

Containing 6.112 acres of which 4.298 acres are in Virginia Military Survey 4813 with 0.124 acre within the highway right-of-way and 1.814 acres are in Virginia Military Survey 12103, 13528, 13557, 13558.

The basis for bearings is based upon the center-line of County Highway 142 being N 11°-00'-00" E, and all other bearings are from angles and distances measured in a field survey by Lee Surveying and Mapping Co., Inc. on March 22, 1996.

Description prepared by:

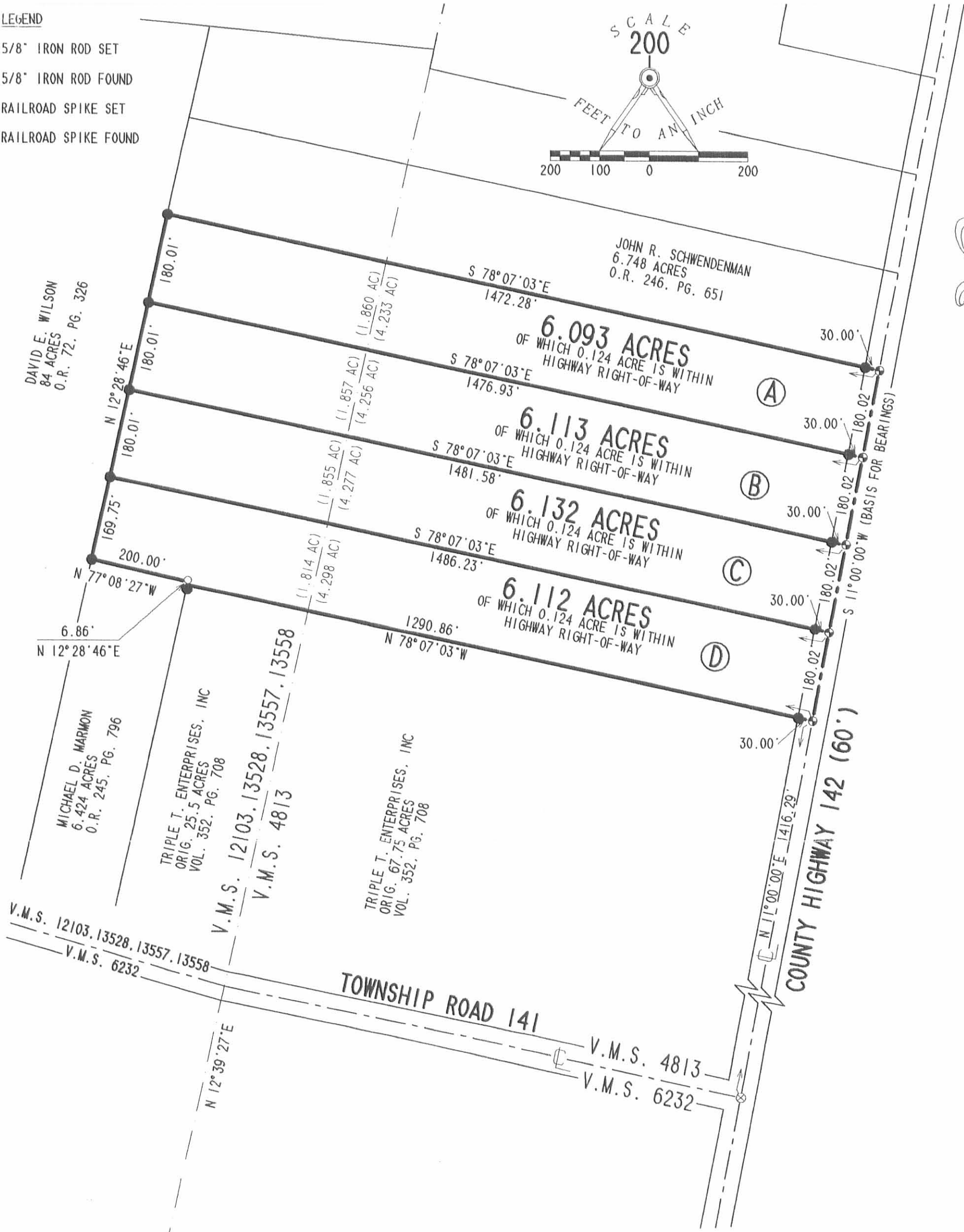
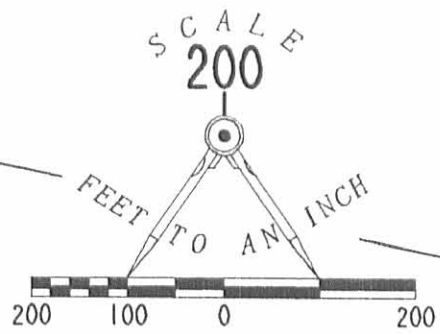
  
Jeffrey I. Lee  
Professional Surveyor 6359  
April 2, 1996





LEGEND

- 5/8" IRON ROD SET
- 5/8" IRON ROD FOUND
- ⊕ RAILROAD SPIKE SET
- ⊗ RAILROAD SPIKE FOUND



**SURVEY OF FOUR TRACTS OUT OF  
 THE TRIPLE T. ENTERPRISES, INC.  
 ORIGINAL 25.5 AND 67.75 ACRE TRACTS  
 VOLUME 352, PAGE 708  
 V.M.S. 12103, 13528, 13557, 13558, AND 4813  
 PERRY TOWNSHIP  
 LOGAN COUNTY, OHIO**

REFERENCES

LOGAN COUNTY ENGINEER'S FILES:  
 FIELD BOOK 615, PAGES 32-36  
 FIELD BOOK 707, PAGE 62  
 R-2237, AND R-7879



CALL TOLL FREE **800-362-2764**  
 OHIO UTILITIES PROTECTION SERVICE.

INDEXED ON MAP  
 8959



SURVEYED BY: *[Signature]*  
**JEFFREY I. LEE**  
 PROFESSIONAL SURVEYOR 6359  
 MARCH 22, 1996

COPYRIGHT 1996 BY:  
**LEE SURVEYING & MAPPING CO., INC.**  
 143 East Columbus Avenue  
 BELLEFONTAINE, OHIO 43311  
 (513) 593-7335

1 RCD 6-9-99 Jay OKJCH



# Lee Surveying and Mapping Co., Inc.



Land Surveys • Topography • Subdivisions • Construction Layout

117 N. Madriver Street  
Bellefontaine OH 43311

Phone: (937) 593-7335  
Fax: (937) 593-7444

## TRIPLE T. ENTERPRISES, INC. 7.650 ACRES

Lying in Virginia Military Survey 4813, Perry Township, Logan County, Ohio.

Being out of the Triple T. Enterprises, Inc. original 67.75 acre tract as deeded and described in Volume 352, Page 708 of the Logan County Records of Deeds and being more particularly described as follows:

Beginning at a railroad spike found on the intersection of center-lines of Township Road 141 and County Highway 142.

THENCE, with the center-line of County Highway 142 (60 feet wide), N 11°-00'-00" E, a distance of 916.29 feet to a railroad spike set at the TRUE POINT OF BEGINNING.

THENCE, N 78°-07'-03" W, a distance of 552.91 feet to a 5/8 inch iron rod set, passing a 5/8 inch iron rod set at 30.00 feet.

THENCE, N 19°-41'-08" W, a distance of 157.52 feet to a 5/8 inch iron rod set.

THENCE, N 24°-49'-27" W, a distance of 331.19 feet to a 5/8 inch iron rod set.

THENCE, S 78°-07'-03" E, a distance of 238.45 feet to a 5/8 inch iron rod set.

THENCE, N 2°-32'-48" E, a distance of 101.55 feet to a 3/4 inch iron pipe found.

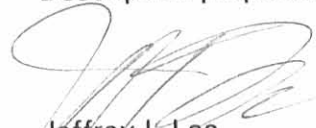
THENCE, with the south line of the Steve Wolgamot 6.112 acre tract (O.R. 367, Pg. 514), S 78°-07'-03" E, a distance of 603.66 feet to a railroad spike found, passing a 5/8 inch iron rod set at 573.66 feet.

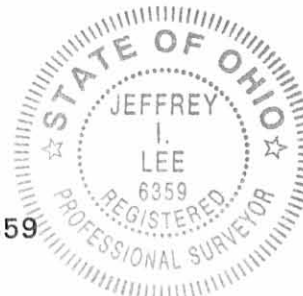
THENCE, with the center-line of County Highway 142, S 11°-00'-00" W, a distance of 500.00 feet to the point of beginning.

Containing 7.650 acres with 0.344 acre within the highway right-of-way.

The basis for bearings is the center-line of County Highway 142 being N 11°-00'-00" E, and all other bearings are from angles and distances measured in a field survey by Lee Surveying and Mapping Co., Inc. on June 8, 1999.

Description prepared by:

  
Jeffrey I. Lee  
Professional Surveyor 6359  
June 9, 1999



L 2246

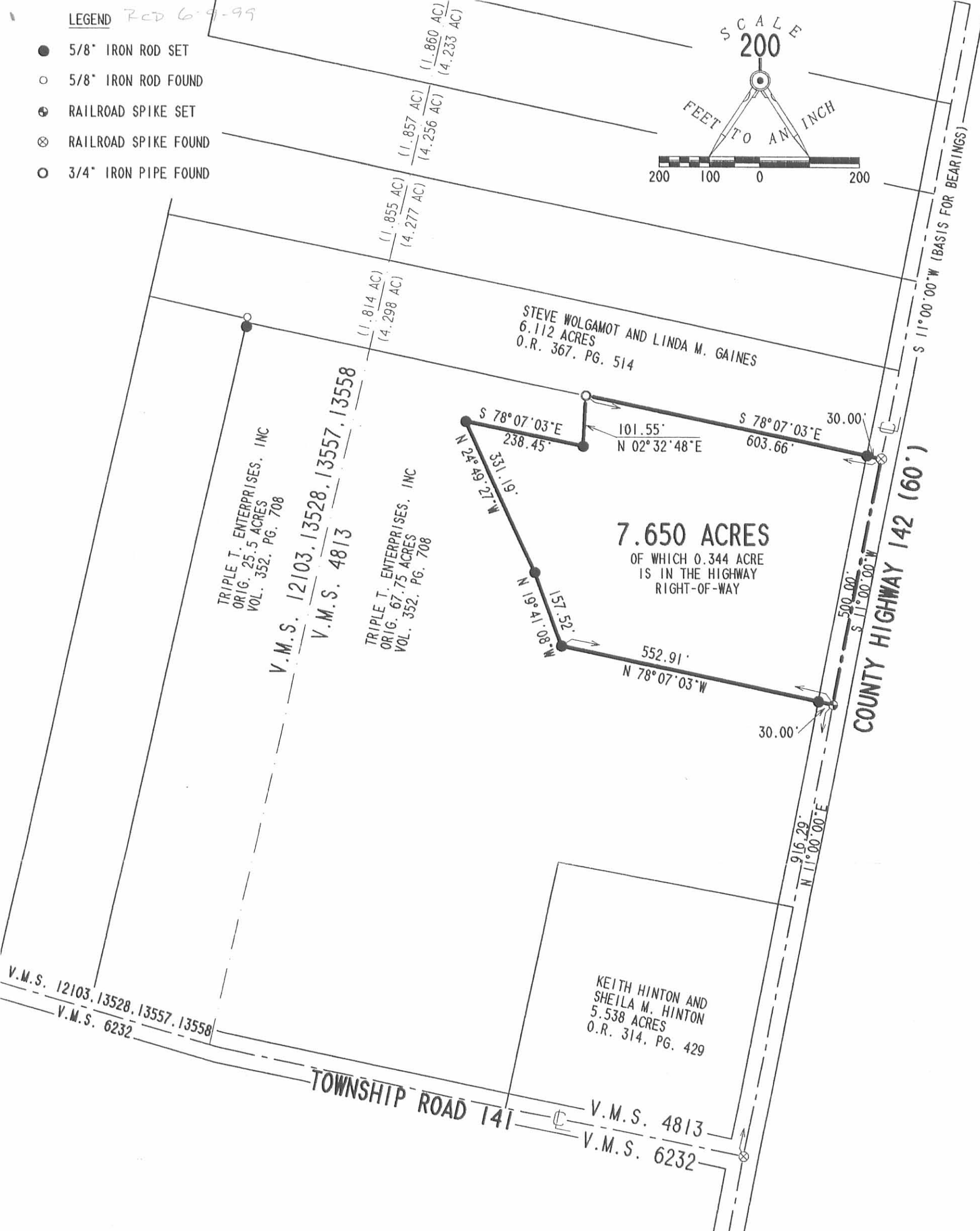
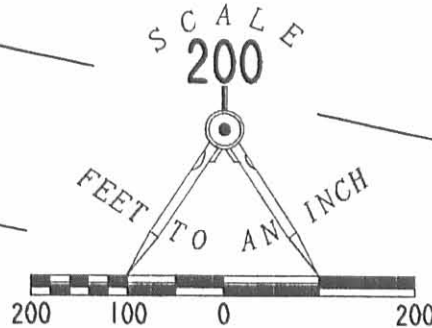
ORIGINAL STAMP IN GREEN

INDEXED ON MAP  
8959 3D



LEGEND RCD 6-9-99

- 5/8" IRON ROD SET
- 5/8" IRON ROD FOUND
- ⊕ RAILROAD SPIKE SET
- ⊗ RAILROAD SPIKE FOUND
- 3/4" IRON PIPE FOUND



**SURVEY OR A 7.650 ACRE TRACT  
 OUT OF THE  
 THE TRIPLE T. ENTERPRISES, INC.  
 ORIGINAL 67.75 ACRE TRACTS  
 VOLUME 352, PAGE 708  
 VIRGINIA MILITARY SURVEY 4813  
 PERRY TOWNSHIP  
 LOGAN COUNTY, OHIO**

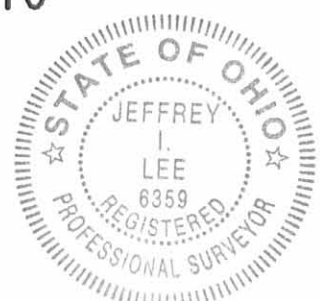
REFERENCES

LOGAN COUNTY ENGINEER'S FILES:  
 FIELD BOOK 615, PAGES 32-36  
 FIELD BOOK 707, PAGE 62  
 R-2237, AND R-7879



CALL TOLL FREE **800-362-2764**  
 OHIO UTILITIES PROTECTION SERVICE.

INDEXED ON MAP  
 89593P



ORIGINAL STAMP IN GREEN

SURVEYED BY:

*Jeffrey I. Lee*  
 JEFFREY I. LEE  
 PROFESSIONAL SURVEYOR 6359  
 JUNE 8, 1999

COPYRIGHT 1999 BY:  
**LEE SURVEYING & MAPPING CO., INC.**  
 117 North Madriver Street  
 BELLEFONTAINE, OHIO 43311  
 (937) 593-7335

D 347 THIERGAR2  
 THIERGAR.DAT

L-2246-3

REC'D 12-5-94 SMJ OK ✓



# Lee Surveying and Mapping Co.



Farm Surveys • Lot Surveys • Topography • Subdivisions • Construction Layout

143 EAST COLUMBUS AVENUE  
BELLEFONTAINE, OHIO 43311

(513) 593-7335

JEFFREY I. LEE, P.S.

## TRIPLE T. ENTERPRISES, INC. 6.748 ACRES Tract A

Lying in Virginia Military Survey 12103, 13528, 13557, 13558, and Virginia Military Survey 4813, Perry Township, Logan County, Ohio.

Being out of the Triple T. Enterprises, Inc. 25.5 acre and 67.75 acre tracts as deeded and described in Volume 352, Page 708 of the Logan County Records of Deeds and being more particularly described as follows:

Beginning at a railroad spike set on the intersection of center-lines of Township Road 141 and County Highway 142.

THENCE, with the center-line of County Highway 142 (60 feet wide), N 11°-00'-00" E, a distance of 2136.38 feet to a railroad spike set at the TRUE POINT OF BEGINNING.

THENCE, N 78°-07'-03" W, a distance of 1472.28 feet to a 5/8 inch iron rod set.

THENCE, with the easterly line of the David E. Wilson 84.0 acre tract (O.R. 72, Pg. 326), N 12°-28'-46" E, a distance of 200.01 feet to a 5/8 inch iron rod set.

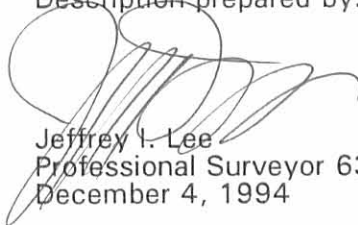
THENCE, S 78°-07'-03" E, a distance of 1467.12 feet to a railroad spike set.

THENCE, with the center-line of County Highway 142, S 11°-00'-00" W, a distance of 200.02 feet to the point of beginning.

Containing 6.748 acres of which 4.679 acres are in Virginia Military Survey 4813 with 0.138 acre within the highway right-of-way and 2.069 acres are in Virginia Military Survey 12103, 13528, 13557, 13558.

The basis for bearings is based upon the center-line of County Highway 142 being N 11°-00'-00" E, and all other bearings are from angles and distances measured in a field survey by Lee Surveying and Mapping Company on December 3, 1994.

Description prepared by:

  
Jeffrey I. Lee  
Professional Surveyor 6359  
December 4, 1994



L 2246

ORIGINAL STAMP IN GREEN

INDEXED ON MAP  
8959 4D-1



# Lee Surveying and Mapping Co.



Farm Surveys • Lot Surveys • Topography • Subdivisions • Construction Layout

143 EAST COLUMBUS AVENUE  
BELLEFONTAINE, OHIO 43311

(513) 593-7335

JEFFREY I. LEE, P.S.

## TRIPLE T. ENTERPRISES, INC. 6.875 ACRES Tract B

Lying in Virginia Military Survey 12103, 13528, 13557, 13558, and Virginia Military Survey 4813, Perry Township, Logan County, Ohio.

Being out of the Triple T. Enterprises, Inc. 25.5 acre and 67.75 acre tracts as deeded and described in Volume 352, Page 708 of the Logan County Records of Deeds and being more particularly described as follows:

Beginning at a railroad spike set on the intersection of center-lines of Township Road 141 and County Highway 142.

THENCE, with the center-line of County Highway 142 (60 feet wide), N 11°-00'-00" E, a distance of 2336.40 feet to a railroad spike set at the TRUE POINT OF BEGINNING.

THENCE, N 78°-07'-03" W, a distance of 1467.12 feet to a 5/8 inch iron rod set.

THENCE, with the easterly line of the David E. Wilson 84.0 acre tract (O.R. 72, Pg. 326), N 12°-28'-46" E, a distance of 188.38 feet to a 5/8 inch iron rod set.

THENCE, with the south line of the Fred A. Brill 100.0 acre tract (Vol. 402, Pg. 986), S 84°-43'-45" E, a distance of 455.23 feet to a 5/8 inch iron rod set.

THENCE, with the west line of Virginia Military Survey 4813, S 12°-39'-27" W, a distance of 40.79 feet to a 5/8 inch iron rod set.

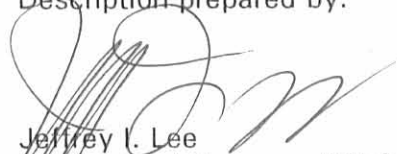
THENCE, S 78°-07'-03" E, a distance of 1010.42 feet to a railroad spike set.

THENCE, with the center-line of County Highway 142, S 11°-00'-00" W, a distance of 200.02 feet to the point of beginning.

Containing 6.875 acres of which 4.652 acres are in Virginia Military Survey 4813 with 0.138 acre within the highway right-of-way and 2.223 acres are in Virginia Military Survey 12103, 13528, 13557, 13558.

The basis for bearings is based upon the center-line of County Highway 142 being N 11°-00'-00" E, and all other bearings are from angles and distances measured in a field survey by Lee Surveying and Mapping Company on December 3, 1994.

Description prepared by:

  
Jeffrey I. Lee  
Professional Surveyor 6359  
December 4, 1994  
Rev. December 5, 1994



L 2246

ORIGINAL STAMP IN GREEN

INDEXED ON MAP  
8959 4D-2

REC'D 12-5-94 SMY OK ✓



# Lee Surveying and Mapping Co.



Farm Surveys • Lot Surveys • Topography • Subdivisions • Construction Layout

143 EAST COLUMBUS AVENUE  
BELLEFONTAINE, OHIO 43311

(513) 593-7335

JEFFREY I. LEE, P.S.

## TRIPLE T. ENTERPRISES, INC. 7.145 ACRES Tract C

Lying in Virginia Military Survey 4813, Perry Township, Logan County, Ohio.

Being out of the Triple T. Enterprises, Inc. 67.75 acre tract as deeded and described in Volume 352, Page 708 of the Logan County Records of Deeds and being more particularly described as follows:

Beginning at a railroad spike set on the intersection of center-lines of Township Road 141 and County Highway 142.

THENCE, with the center-line of County Highway 142 (60 feet wide), N 11°-00'-00" E, a distance of 2536.42 feet to a railroad spike set at the TRUE POINT OF BEGINNING.

THENCE, N 78°-07'-03" W, a distance of 1010.42 feet to a 5/8 inch iron rod set.

THENCE, with the west line of Virginia Military Survey 4813 and the easterly line of the Fred A. Brill 100.0 acre tract (Vol. 402, Pg. 986), N 12°-39'-27" E, a distance of 334.24 feet to a 5/8 inch iron rod set, passing a 5/8 inch iron rod set at the southeast corner of the said 100.0 acre tract at 40.79 feet.

THENCE, with the south line of the Bernard Wilgus 78.08 acre tract (Vol. 386, Pg. 487, TR. I), S 78°-07'-03" E, a distance of 624.58 feet to a 5/8 inch iron rod set.

THENCE, S 11°-00'-00" W, a distance of 175.02 feet to a 5/8 inch iron rod set.

THENCE, S 78°-07'-03" E, a distance of 375.00 feet to a railroad spike set.

THENCE, with the center-line of County Highway 142, S 11°-00'-00" W, a distance of 200.02 feet to the point of beginning.

Containing 7.145 acres of which 0.138 acre is within the highway right-of-way.

The basis for bearings is based upon the center-line of County Highway 142 being N 11°-00'-00" E, and all other bearings are from angles and distances measured in a field survey by Lee Surveying and Mapping Company on December 3, 1994.

Description prepared by:

Jeffrey I. Lee  
Professional Surveyor 6359  
December 4, 1994  
Rev. December 5, 1994



L 2246

ORIGINAL STAMP IN GREEN

INDEXED ON MAP  
8959 4D-3



# Lee Surveying and Mapping Co.



Farm Surveys • Lot Surveys • Topography • Subdivisions • Construction Layout

143 EAST COLUMBUS AVENUE  
BELLEFONTAINE, OHIO 43311

(513) 593-7335

JEFFREY I. LEE, P.S.

## TRIPLE T. ENTERPRISES, INC. 1.507 ACRES Tract E

Lying in Virginia Military Survey 4813, Perry Township, Logan County, Ohio.

Being out of the Triple T. Enterprises, Inc. 67.75 acre tract as deeded and described in Volume 352, Page 708 of the Logan County Records of Deeds and being more particularly described as follows:

Beginning at a railroad spike set on the intersection of center-lines of Township Road 141 and County Highway 142.

THENCE, with the center-line of County Highway 142 (60 feet wide), N 11°-00'-00" E, a distance of 2736.44 feet to a railroad spike set at the TRUE POINT OF BEGINNING.

THENCE, N 78°-07'-03" W, a distance of 375.00 feet to a 5/8 inch iron rod set.

THENCE, N 11°-00'-00" E, a distance of 175.02 feet to a 5/8 inch iron rod set.

THENCE, with the south line of the Bernard Wilgus 78.08 acre tract (Vol. 386, Pg. 487, TR. I), S 78°-07'-03" E, a distance of 375.83 feet to a railroad spike set.

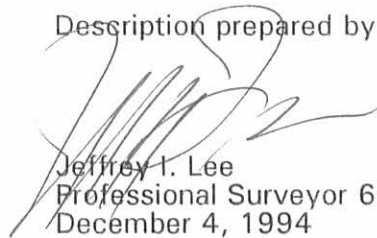
THENCE, with the center-line of County Highway 142, S 20°-15'-16" W, a distance of 5.16 feet to a 1-1/2 inch square iron bar found.

THENCE, with the center-line of County Highway 142, S 11°-00'-00" W, a distance of 169.91 feet to the point of beginning.

Containing 1.507 acres of which 0.121 acre is within the highway right-of-way.

The basis for bearings is based upon the center-line of County Highway 142 being N 11°-00'-00" E, and all other bearings are from angles and distances measured in a field survey by Lee Surveying and Mapping Company on December 3, 1994.

Description prepared by:

  
Jeffrey I. Lee  
Professional Surveyor 6359  
December 4, 1994  
Rev. December 5, 1994

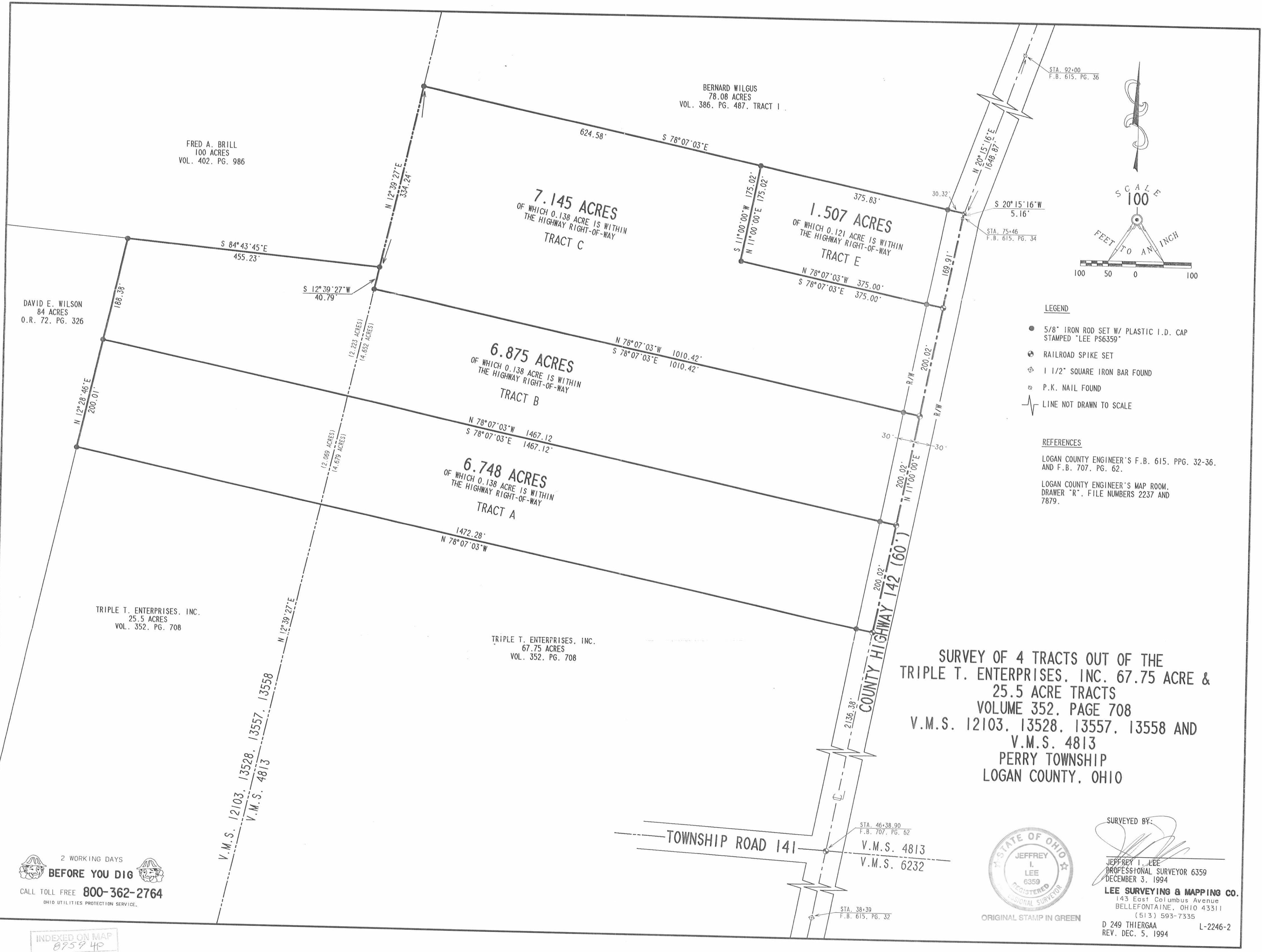


L 2246

ORIGINAL STAMP IN GREEN

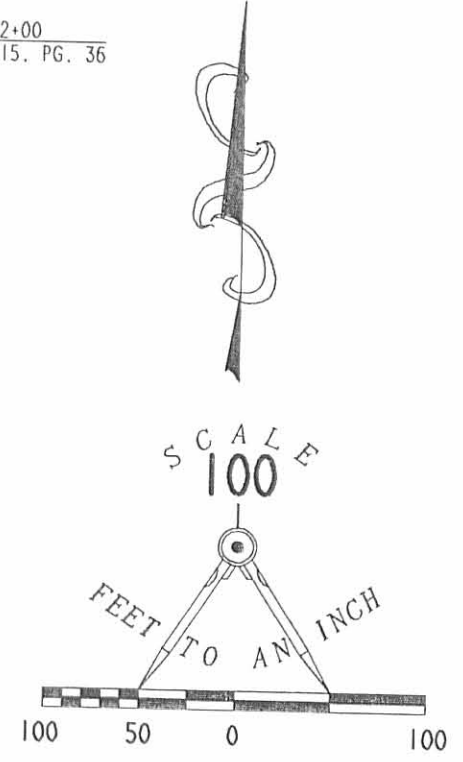
INDEXED ON MAP  
8959 4D-4





STA. 92+00  
F.B. 615, PG. 36

STA. 75+46  
F.B. 615, PG. 34



**LEGEND**

- 5/8" IRON ROD SET W/ PLASTIC I.D. CAP STAMPED "LEE PS6359"
- ⊕ RAILROAD SPIKE SET
- ⊕ 1 1/2" SQUARE IRON BAR FOUND
- ⊕ P.K. NAIL FOUND
- LINE NOT DRAWN TO SCALE

**REFERENCES**

LOGAN COUNTY ENGINEER'S F.B. 615, PPG. 32-36, AND F.B. 707, PG. 62.  
 LOGAN COUNTY ENGINEER'S MAP ROOM, DRAWER "R", FILE NUMBERS 2237 AND 7879.

**SURVEY OF 4 TRACTS OUT OF THE TRIPLE T. ENTERPRISES, INC. 67.75 ACRE & 25.5 ACRE TRACTS VOLUME 352, PAGE 708 V.M.S. 12103, 13528, 13557, 13558 AND V.M.S. 4813 PERRY TOWNSHIP LOGAN COUNTY, OHIO**

2 WORKING DAYS  
**BEFORE YOU DIG**  
 CALL TOLL FREE **800-362-2764**  
 OHIO UTILITIES PROTECTION SERVICE.

INDEXED ON MAP  
 875940

TOWNSHIP ROAD 141  
 STA. 46+38.90  
 F.B. 707, PG. 62  
 V.M.S. 4813  
 V.M.S. 6232  
 STA. 38+39  
 F.B. 615, PG. 32



SURVEYED BY:  
  
 JEFFREY I. LEE  
 PROFESSIONAL SURVEYOR 6359  
 DECEMBER 3, 1994  
**LEE SURVEYING & MAPPING CO.**  
 143 East Columbus Avenue  
 BELLEFONTAINE, OHIO 43311  
 (513) 593-7335  
 D 249 THIERGAA  
 REV. DEC. 5, 1994  
 L-2246-2

ORIGINAL STAMP IN GREEN

REC'D 12-5-94 smy ok ✓



# Lee Surveying and Mapping Co.



Farm Surveys • Lot Surveys • Topography • Subdivisions • Construction Layout

143 EAST COLUMBUS AVENUE  
BELLEFONTAINE, OHIO 43311

(513) 593-7335

JEFFREY I. LEE, P.S.

## TRIPLE T. ENTERPRISES, INC. 6.424 ACRES Tract D

Lying in Virginia Military Survey 12103, 13528, 13557, 13558, Perry Township, Logan County, Ohio.

Being out of the Triple T. Enterprises, Inc. 25.5 acre tract as deeded and described in Volume 352, Page 708 of the Logan County Records of Deeds and being more particularly described as follows:

Beginning at a railroad spike set on the southwest corner of Virginia Military Survey 4813 and on the center-line of Township Road 141 (No record width).

THENCE, with the north line of Virginia Military Survey 6232 and the center-line of Township Road 141, N 73°-44'-03" W, a distance of 244.16 feet to a railroad spike set at the TRUE POINT OF BEGINNING.

THENCE, with the north line of Virginia Military Survey 6232 and the center-line of Township Road 141, N 73°-44'-03" W, a distance of 200.44 feet to a railroad spike set.

THENCE, with the easterly lines of the Michael D. Marmon original 10.0 acre tract (Vol. 392, Pg. 589) and the David E. Wilson 11.0 acre and 84.0 acre tracts (O.R. 72, Pg. 326), N 12°-28'-46" E, a distance of 1393.30 feet to a 5/8 inch iron rod set.

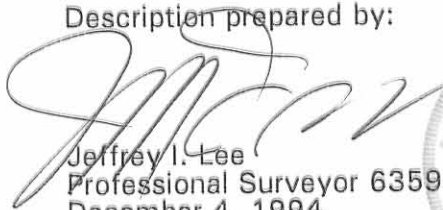
THENCE, S 77°-08'-27" E, a distance of 200.00 feet to a 5/8 inch iron rod set.

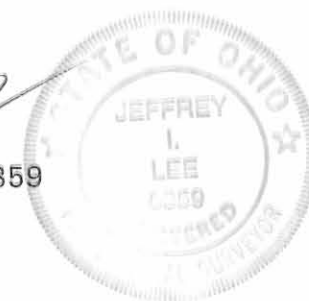
THENCE, S 12°-28'-46" W, a distance of 1405.21 feet to the point of beginning.

Containing 6.424 acres of which 0.138 acre is within the highway right-of-way.

The basis for bearings is based upon the center-line of County Highway 142 being N 11°-00'-00" E, and all other bearings are from angles and distances measured in a field survey by Lee Surveying and Mapping Company on December 2, 1994.

Description prepared by:

  
Jeffrey I. Lee  
Professional Surveyor 6359  
December 4, 1994  
Rev. Dec. 5, 1994

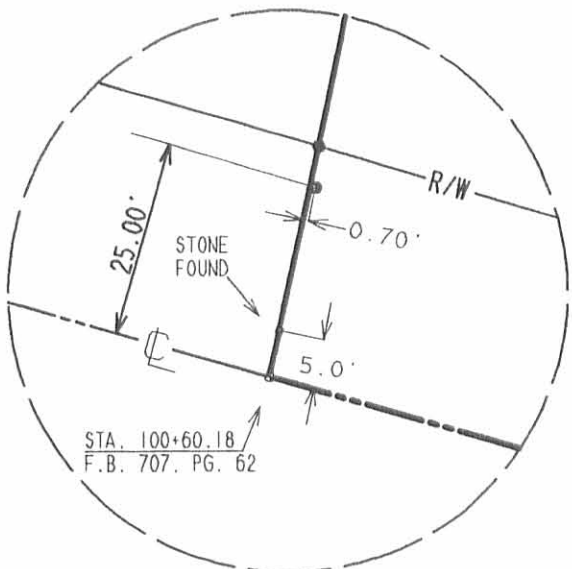


L 2246

ORIGINAL STAMP IN GREEN

INDEXED ON MAP  
8959 5D

REC'D 12-5-94 SWM OK



DETAIL  
(NO SCALE)

DAVID E. WILSON  
84 ACRES  
O.R. 72, PG. 326

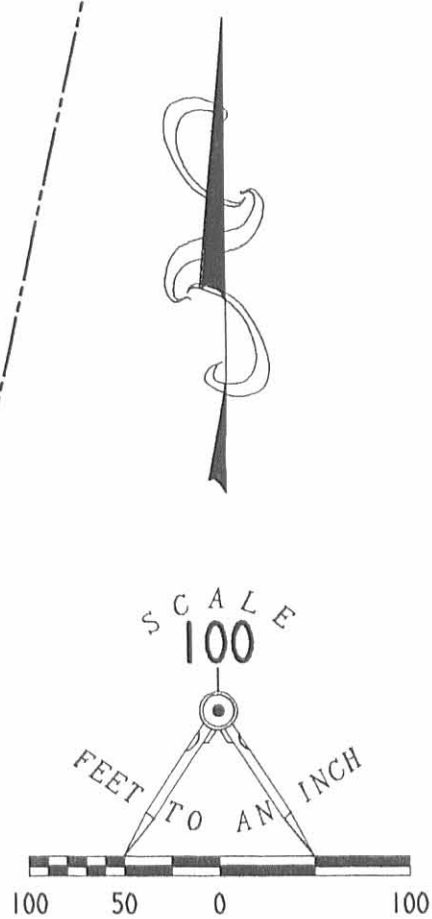
TRIPLE T. ENTERPRISES, INC.  
25.5 ACRES  
VOL. 352, PG. 708

DAVID E. WILSON  
11 ACRES  
O.R. 72, PG. 326

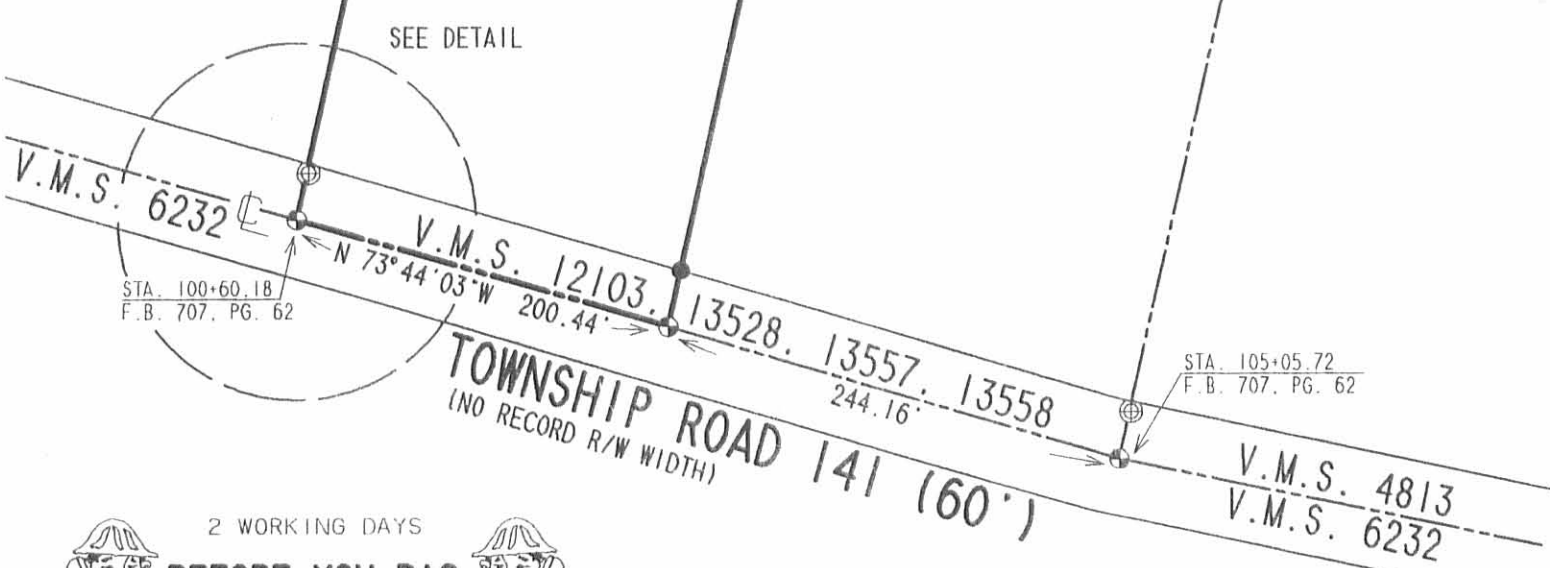
MICHAEL D. MARMON  
ORIG. 10 ACRES  
VOL. 392, PG. 589

TRACT D  
6.424 ACRES  
OF WHICH 0.138 ACRE IS  
WITHIN THE HIGHWAY  
RIGHT-OF-WAY

SURVEY OF 6.424 ACRES (TRACT D) OUT OF THE  
TRIPLE T. ENTERPRISES, INC. 25.5. ACRE TRACT  
VOLUME 352. PAGE 708  
V.M.S. 12103. 13528. 13557. 13558  
PERRY TOWNSHIP  
LOGAN COUNTY, OHIO



- LEGEND**
- 5/8" IRON ROD SET W/ PLASTIC I.D. CAP STAMPED "LEE PS6359"
  - ⊕ RAILROAD SPIKE SET
  - ⊠ STONE FOUND
  - ⊗ CONCRETE R/W MONUMENT FOUND
- REFERENCES**
- LOGAN COUNTY ENGINEER'S F.B. 707, PAGE 62.



ORIGINAL STAMP IN GREEN  
SURVEYED BY:  
*Jeffrey I. Lee*  
JEFFREY I. LEE  
PROFESSIONAL SURVEYOR 6359  
DECEMBER 2, 1994

**LEE SURVEYING & MAPPING CO.**  
143 East Columbus Avenue  
BELLEFONTAINE, OHIO 43311  
(513) 593-7335

D 249 THIERGAD L-2246-3  
RFV DEC. 5, 1994

2 WORKING DAYS  
**BEFORE YOU DIG**  
CALL TOLL FREE **800-362-2764**  
OHIO UTILITIES PROTECTION SERVICE.

INDEXED ON MAP  
8959 5P



# Lee Surveying and Mapping Co., Inc.



Farm Surveys • Lot Surveys • Topography • Subdivisions • Construction Layout

117 NORTH MADRIVER STREET  
BELLEFONTAINE, OHIO 43311

(937) 593-7335  
FAX (937) 593-7444

## TRIPLE T. ENTERPRISES, INC. 5.538 ACRES

Lying in Virginia Military Survey 4813, Perry Township, Logan County, Ohio.

Being out of the Triple T. Enterprises, Inc. original 67.75 acre tract as deeded and described in Volume 352, Page 707 of the Logan County Records of Deeds and being more particularly described as follows:

Beginning at a railroad spike found on the south line of Virginia Military Survey 4813 at the intersection of center-lines of County Highway 142 (60 feet wide) and Township Road 141 (60 feet wide). The said Virginia Military Survey line and highway intersection (Station 46 + 38.90 of County Highway 142 is Station 115 + 89.60 of Township Road 141) are as established by the Logan County Engineer's Office (Field Book 707, Page 62, dated October 7, 1970).

THENCE, with the south line of Virginia Military Survey 4813 and the center-line of Township Road 141, N 78°-09'-38" W, a distance of 483.34 feet to a railroad spike set.

THENCE, N 11°-50'-22" E, a distance of 499.46 feet to a 5/8 inch iron rod set, passing a 5/8 inch iron rod set for reference at 25.00 feet.

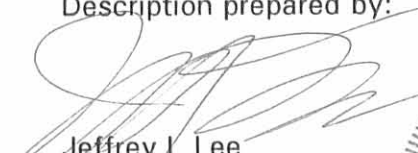
THENCE, S 79°-00'-00" E, a distance of 475.97 feet to a railroad spike set, passing a 5/8 inch iron rod set at 445.97 feet.

THENCE, with the center-line of County Highway 142, S 11°-00'-00" W, a distance of 506.49 feet to the point of beginning.

Containing 5.538 acres of which 0.661 acre is within the highway right-of-way.

The basis for bearings is the center-line of County Highway 142 being S 11°-00'-00" W, and all other bearings are from angles and distances measured in a field survey by Lee Surveying and Mapping Co., Inc. on November 22, 1996.

Description prepared by:

  
Jeffrey I. Lee  
Professional Surveyor 6359  
December 3, 1996



L 2246

ORIGINAL STAMP IN GREEN

INDEXED ON MAP  
0959 GD-1

REC'D 12-16-96 SWY OK



# Lee Surveying and Mapping Co., Inc.

Farm Surveys • Lot Surveys • Topography • Subdivisions • Construction Layout

117 NORTH MADRIVER STREET  
BELLEFONTAINE, OHIO 43311

(937) 593-7335  
FAX (937) 593-7444

## TRIPLE T. ENTERPRISES, INC. 60 FEET WIDE UTILITY EASEMENT

Lying in Virginia Military Survey 4813, Perry Township, Logan County, Ohio.

Being a 60 feet wide non-exclusive utility easement over the entire east and south sides of the above described 5.538 acre tract and being part of the Triple T. Enterprises, Inc. original 67.75 acre tract as deeded and described in Volume 352, Page 707 of the Logan County Records of Deeds.

Description prepared by:



*[Signature]*  
Jeffrey I. Lee  
Professional Surveyor 6359  
December 16, 1996

L 2246

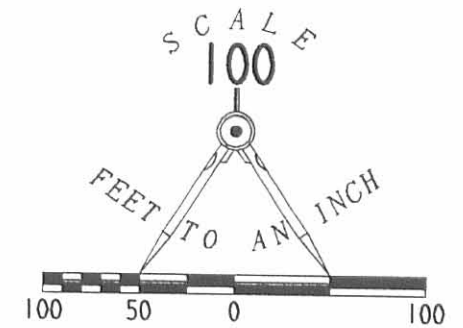
ORIGINAL STAMP IN GREEN

INDEXED ON MAP  
8959 4D-2



TRIPLE T. ENTERPRISES, INC.  
ORIGINAL 67.75 ACRE TRACT  
VOLUME 352, PAGE 707

**5.538 ACRES**  
OF WHICH 0.661 ACRE  
IS WITHIN THE HIGHWAY  
RIGHT-OF-WAY



- LEGEND
- ⊗ RAILROAD SPIKE FOUND
  - ⊕ 1-1/2" SQUARE IRON BAR FOUND
  - ⊗ PK NAIL FOUND
  - ⊙ CONCRETE RIGHT-OF-WAY MONUMENT FOUND
  - ⊕ RAILROAD SPIKE SET
  - 5/8" I. ROD SET

VIRGINIA MILITARY SURVEY 12103  
VIRGINIA MILITARY SURVEY 4813

STA. 105+05.72

**TOWNSHIP ROAD 141 (60')**  
NO RIGHT-OF-WAY WIDTH ESTABLISHED  
N 78°09'38"W 600.47'

N 11°50'22"E  
499.46'

S 79°00'00"E  
475.97'

30.00'

**COUNTY HIGHWAY 142 (60')**  
(BASIS FOR BEARINGS)

S 11°00'00"W  
506.49'

483.34'  
N 78°09'38"W

17.82'  
VIRGINIA MILITARY SURVEY 4813  
VIRGINIA MILITARY SURVEY 6232

STA. 46+38.90 - CENTER-LINE C.H. 142  
STA. 115+89.60 - CENTER-LINE T.R. 141  
FIELD BOOK 707, PAGE 62

REFERENCES:  
LOGAN COUNTY ENGINEER'S FILES:  
FILE R-5156  
FIELD BOOK INSKEEP #6, PAGE 110  
FIELD BOOK 615, PAGES 32 & 33  
FIELD BOOK 707, PAGES 60 - 62  
HIGHWAY FILES FOR T.R. 141 AND 142  
OWEN SHIRK SURVEY DATED FEB. 1967  
FILE X-141

THIS LINE ESTABLISHED BY  
LOGAN COUNTY ENGINEER AS  
THE NORTH LINE OF V.M.S. 6232  
IN FIELD BOOK 707, PAGE 62  
DATED OCT. 7, 1970

NOTE:  
OVERLAP OF SURVEY BY  
P.R. CLAPSADDLE, P.S. 6140  
DATED 8-25-92  
NO FIELD OR RECORD EVIDENCE  
COULD BE FOUND TO JUSTIFY  
THIS LINE.

JEFFREY C. ROSEBROOK  
9.00 AC.  
VOL. 398, PG. 351

PRIOR SURVEYS BY LEE SURVEYING

**SURVEY OF 5.538 ACRES OUT OF THE  
TRIPLE T. ENTERPRISES, INC.  
ORIGINAL 67.75 ACRE TRACT  
VOLUME 352, PAGE 707  
VIRGINIA MILITARY SURVEY 4813  
PERRY TOWNSHIP  
LOGAN COUNTY, OHIO**



SURVEYED BY:  
*[Signature]*  
JEFFREY I. LEE  
PROFESSIONAL SURVEYOR 6359  
NOVEMBER 22, 1996

ORIGINAL STAMP IN GREEN  
COPYRIGHT 1996 BY:  
**LEE SURVEYING & MAPPING CO., INC.**  
117 North Madriver Street  
BELLEFONTAINE, OHIO 43311  
(937) 593-7335

2 WORKING DAYS  
**BEFORE YOU DIG**  
CALL TOLL FREE **800-362-2764**  
OHIO UTILITIES PROTECTION SERVICE.

INDEXED ON MAP  
0159 GP