

YOHO SURVEY
V. M. S. 13432
PERRY TOWNSHIP
November 7, 1964

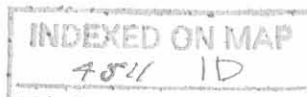
ALLEN TO YOHO

The following described real estate situated in Perry Township, Logan County, Ohio and being part of Virginia Military Survey 13432 and more particularly described as follows:

Beginning at an iron bar at the northwest corner of John Yoho's 76.18 acre tract and in the south line of Ralph T. Akey's 102.17 acre tract; thence with said Yoho's west line S. 6°30' W. 979.6 feet to an iron bar; thence continuing with said Yoho's line S. 72°13' W. 669.7 feet to an iron bar; thence N. 3°17' E. 1251.0 feet to an iron bar in the south line of Ralph T. Akey's 102.17 acre tract; thence with said Akey's south line S. 84°00' E. 680.6 feet to the place of beginning.

Containing 16.63 acres more or less.

The above described parcel being part of Monna M. Allen's 75.00 acre tract.



YOMO SURVEY

PERRY TWP.

V.M.'S 13432

ALLEN TO YOMO

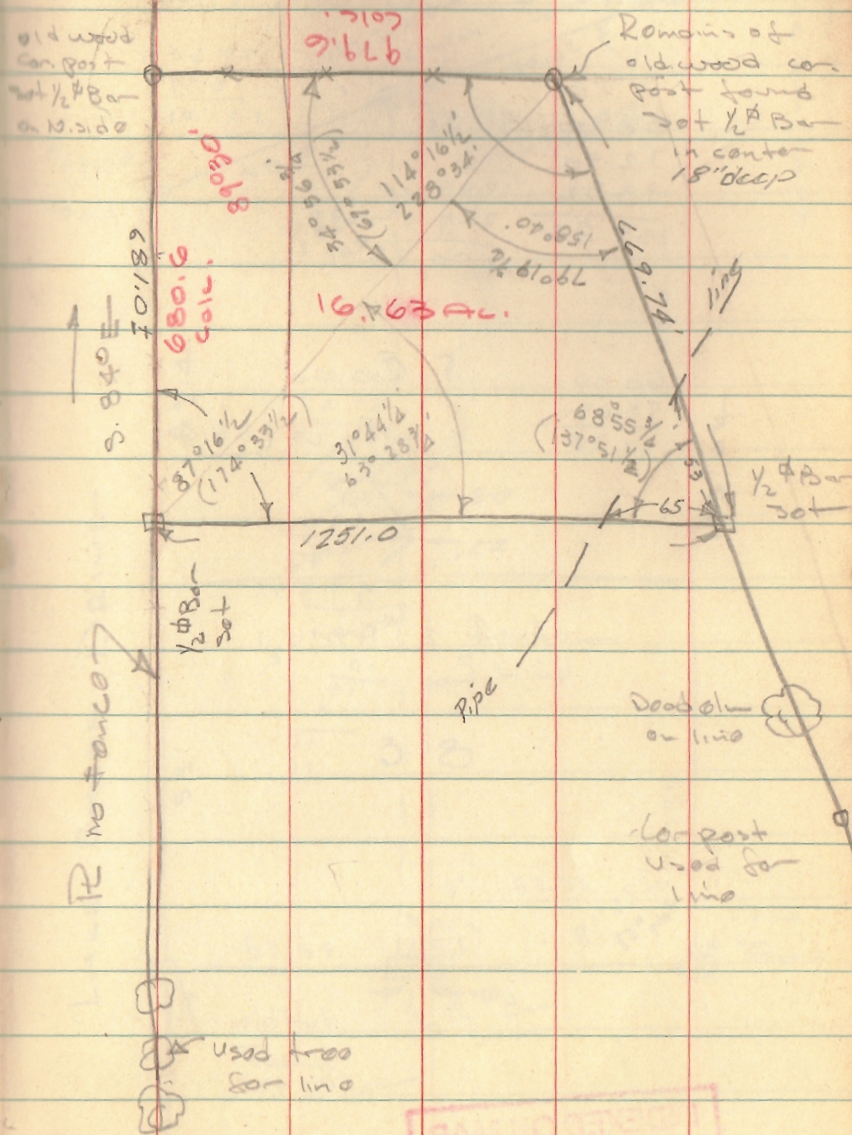
89 60
87 10
244

INDEXED ON MAP
4511

Dodson
Cession

11/7/64

750 50



INDEXED ON MAP
4511