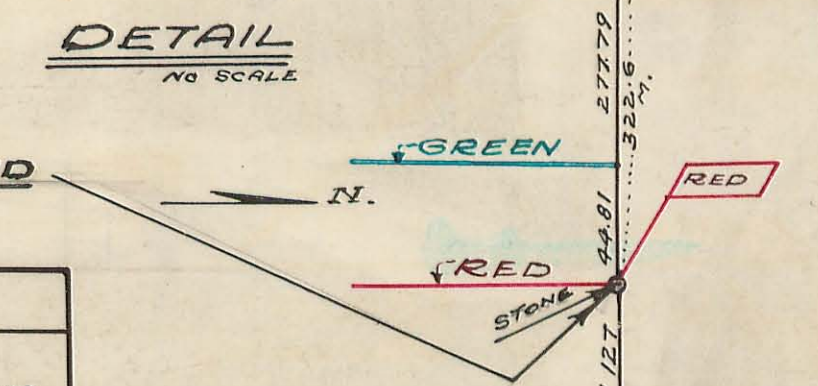
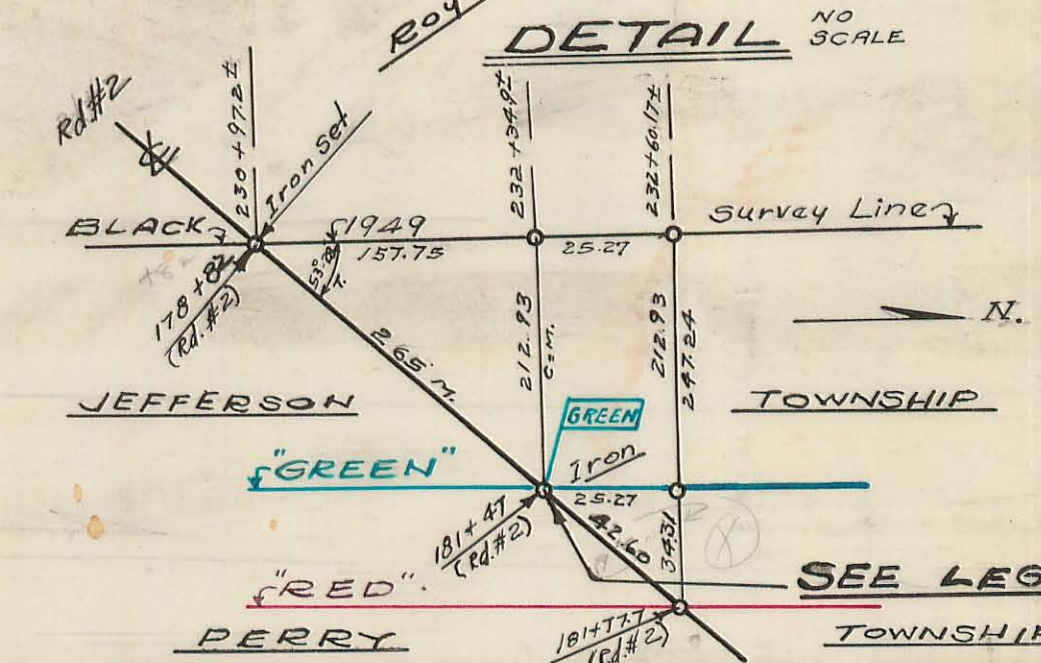
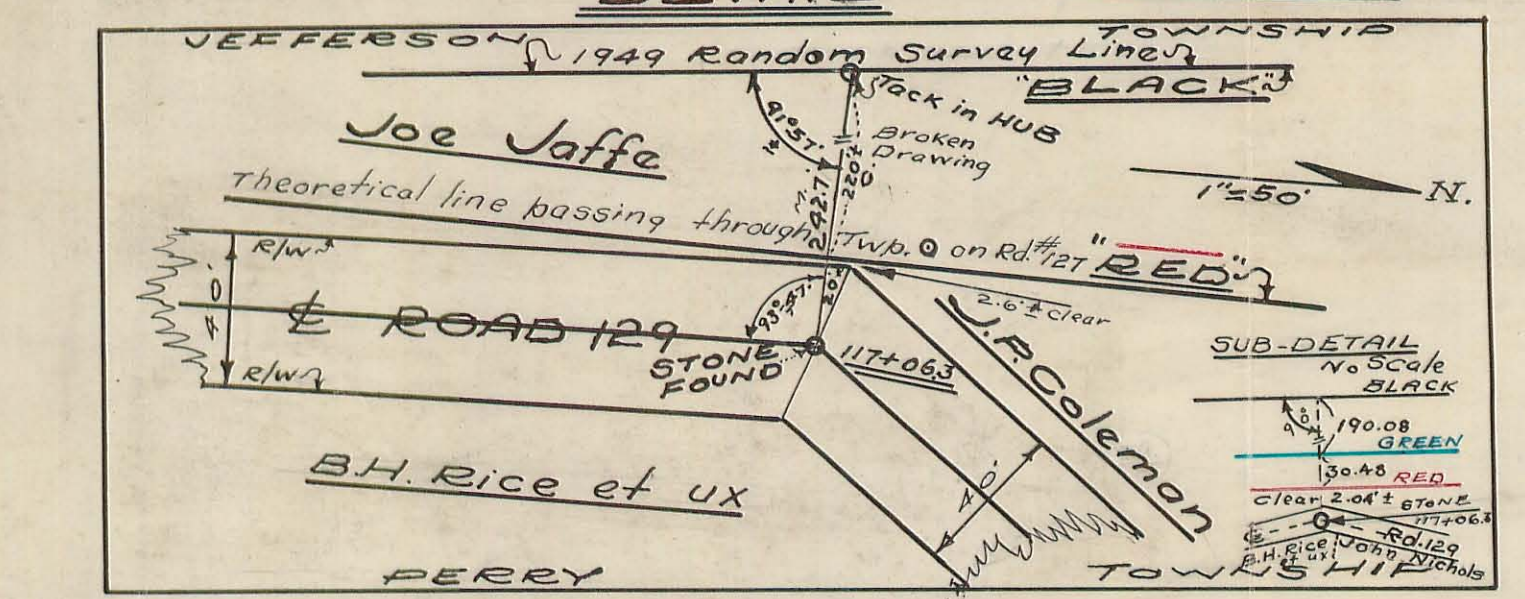
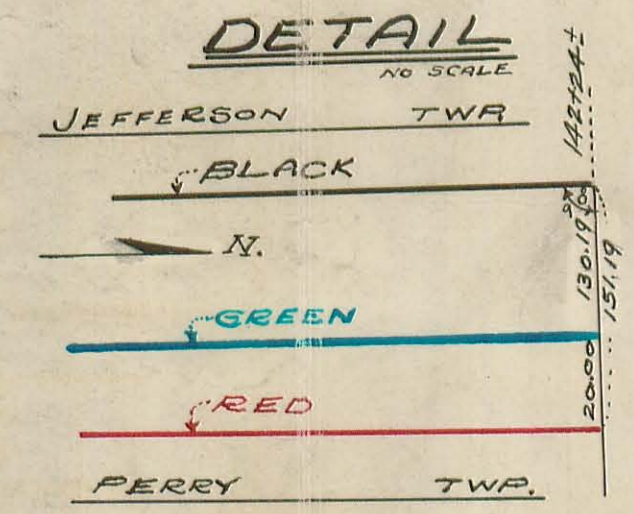
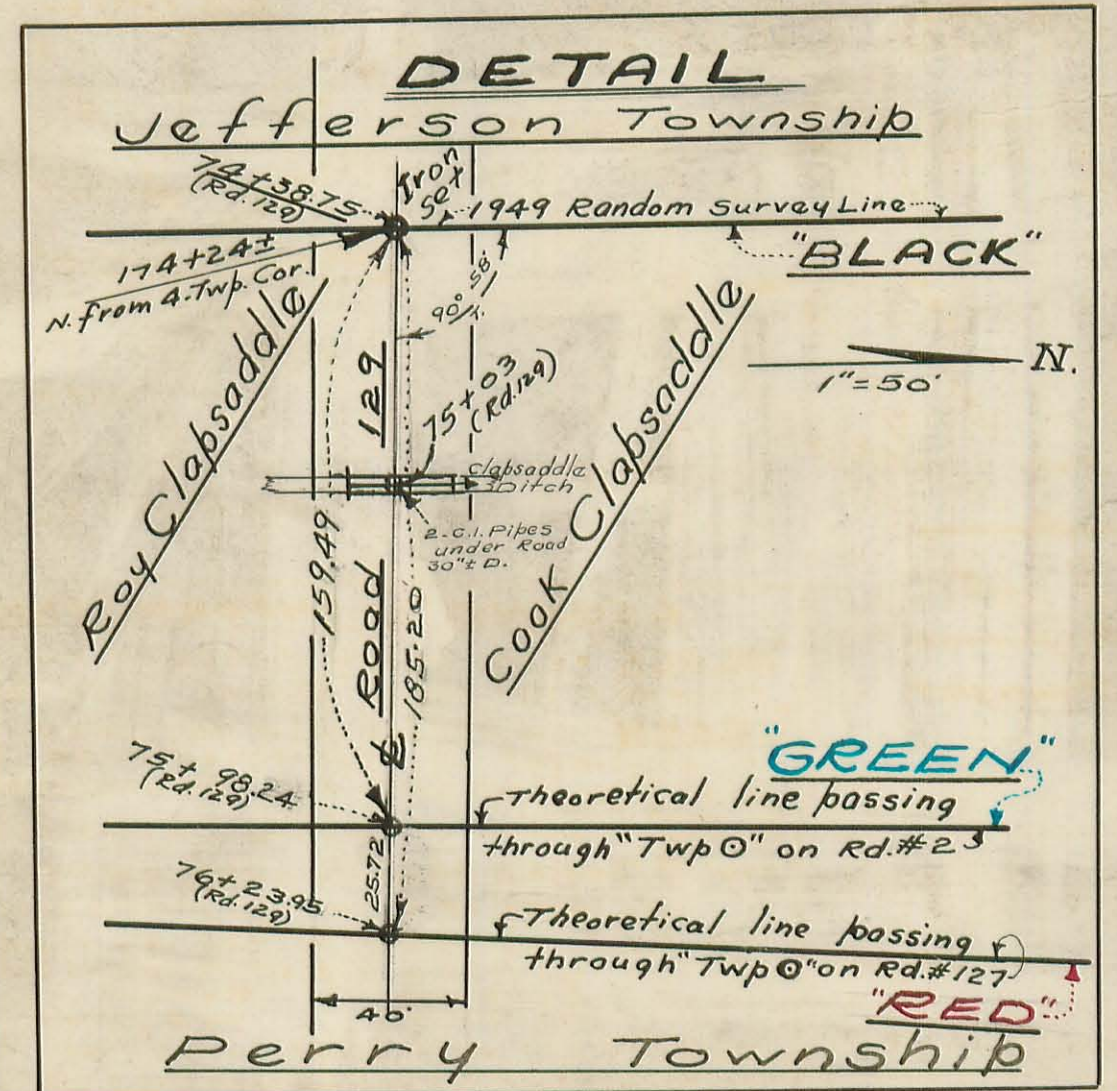
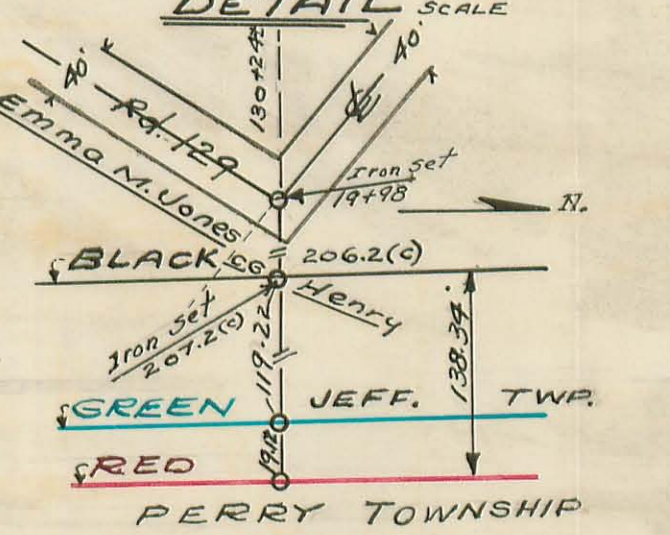
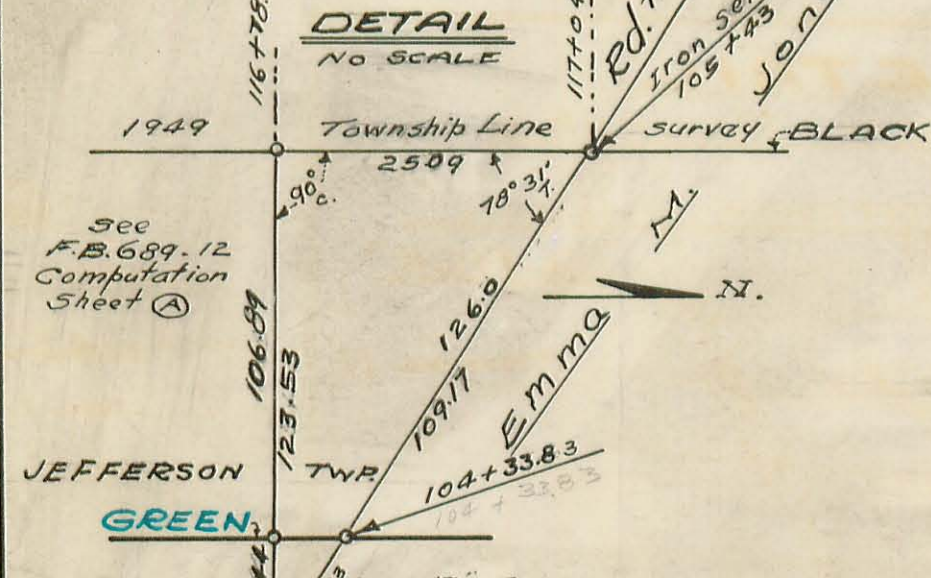
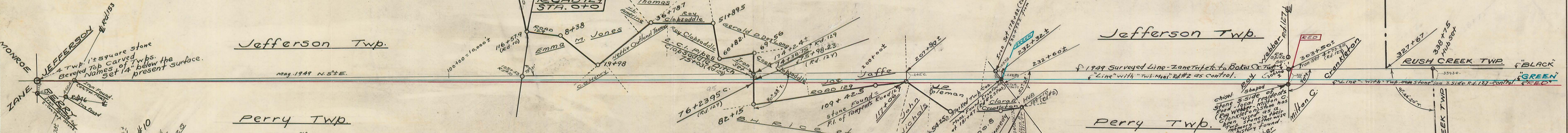


KEY MAP

Showing Proposed Road 129



LEGEND AND INFORMATION

"BLACK" is the survey of 1949, as run and recorded in Field Books 682 and 689.

"GREEN" is a line (on paper only) whose control or alignment is referenced to an IRON or alignment is referenced to an IRON and two Twp. Line con. MONUMENTS-181+47 (Rd #2).

"RED" - Control of this line is a reputed (see F.B. 689 page 17) Township stone on s. side C.H. #127.

All three of these lines have a common starting point, on South, at "The 4 - Township Mon." on South, at "The 4 - Township Mon."

O = Iron or Hub (set or found), as noted.
 C = Calculated G = Green
 M = measured T = Turned R = Red

Where (S) used with stations on Twp. line Survey reference is to scaled, Computed and approx. distances.

FIELD BOOKS

Notes of this 1949 Survey F.B. Nos. 682 & 689

Field Books etc. Consulted 451 (14-18); 524 (7-20); 560 (39-45); 572 (44-64); 573 (31-37); 579 (50-77); 588 (6-20); 615 (5-28); 625 (26-30); #1 Rd. Record - (148 etc.)

LOGAN COUNTY OHIO

Map Showing

JEFFERSON TWP-PERRY TWP

1949 SURVEY

Scale - 1" = 1000' NOV. 1949.

E.K. CORE COUNTY ENGINEER.

Jefferson-Perry Twp. Line

7-13-49 Sunny-
Hend
Mitchell
Dobson 71

INDEXED ON MAP

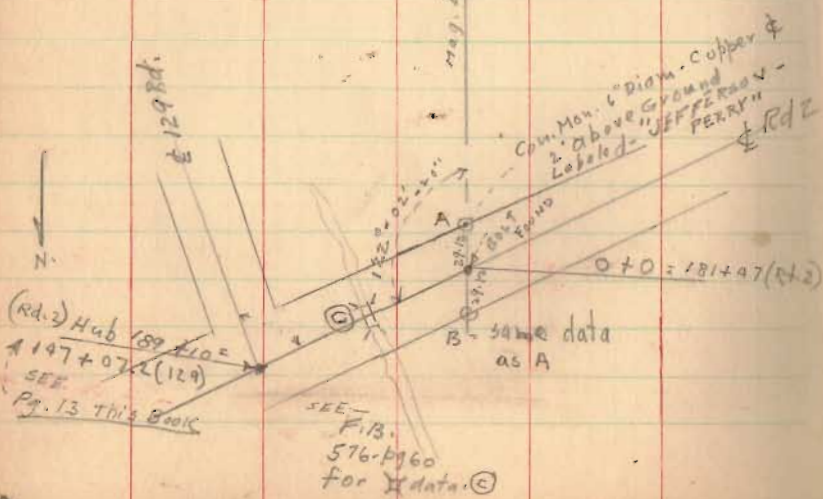
2006

Transit Line (Hub) run to vicinity
of State Route 33

7-21-49

Jefferson Twp.

Perry Twp.



A - B - Mag = NORTH 7/13/49

FB 689

(Contd. from F.B. 682 - pg. 73)

Jefferson Twp. - Perry Twp.
South-North Survey

Note: - Carved stone (Jeff. - Perry - Monroe - Zone)

As per F.B. 682. pg. 73. found and used as South end and starting point of survey. Stone and 2" d. 4' High pipe - F.B. 682 - pg. 73 constitute alignment for this survey, which was projected northwardly, double centering all π points. using triangulation type large targets where distances were large.

No attempt made to station the survey. The Survey, however, is tied to stations of all available intersecting roads and to a survey of Rd. 129 (F.B. 682. 7-13) 1949 at, in general, points (Irons) nearest to Road 129.

checks on Alignment

Nothing found of record in subject area except:

(1) At Rd. 153 = Iron - same line as A. Twp. Stone and pipe.

(2) At Rd. 2 - F.B. 579 - pg. 60

(Nothing of record) (3) at Rd. 127 - F.B. 560 - pg. 40

Note: - also see "Aug. 49." No scale Dwg. in Drawer - R showing various ties to intersecting roads and nearby Rd. 129.

(SEE F.B. 682 - pg. 73 re. S. end and start.)

July - Aug. 1949

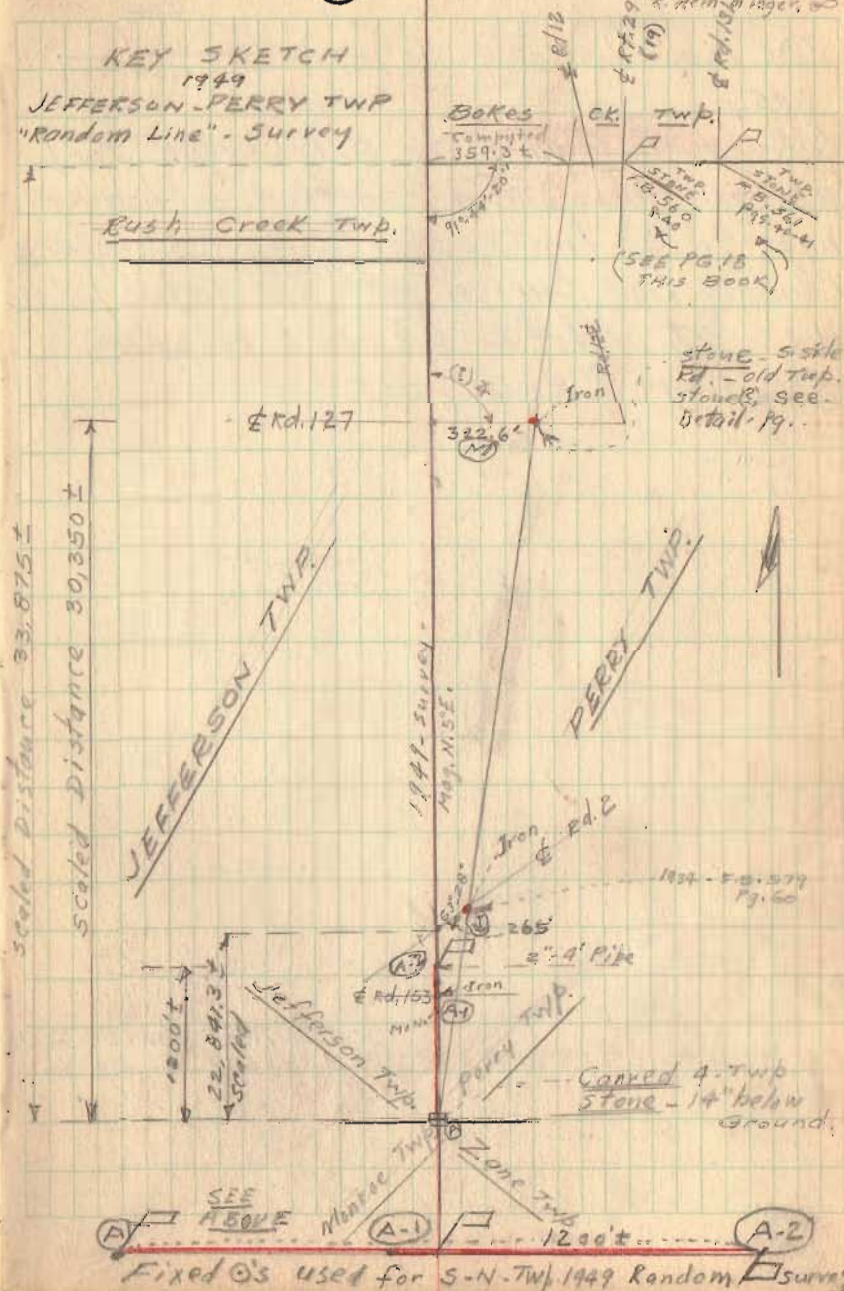
INDEXED ON MAP

2006

KEY SKETCH

1949

JEFFERSON - PERRY TWP
"Random Line" - Survey



9

Handwritten notes in the top right corner: 'Handwritten notes', 'in. Handwritten notes', 'D. 1949', 'Hemlock', 'pg. 73'.

stone 5' side
Rd. - old Twp.
stones, see
Detail - pg. 11

1824 - F.B. 579
Pg. 60

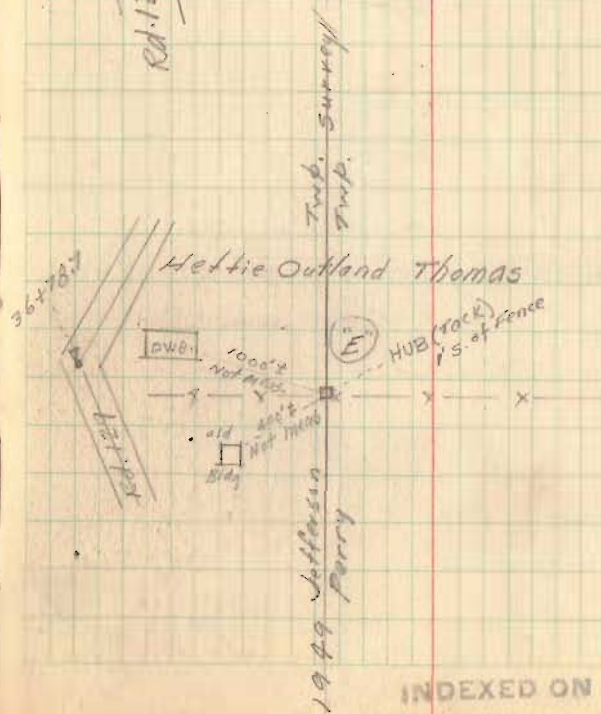
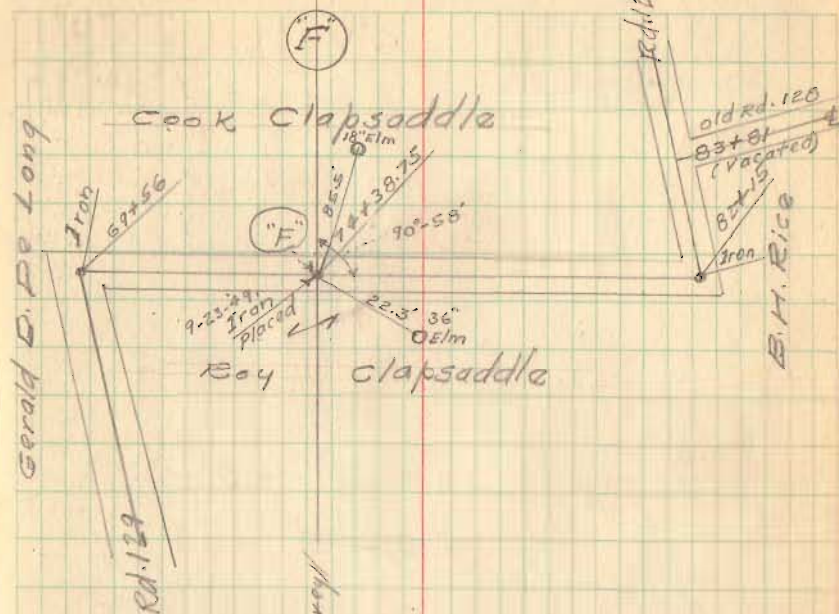
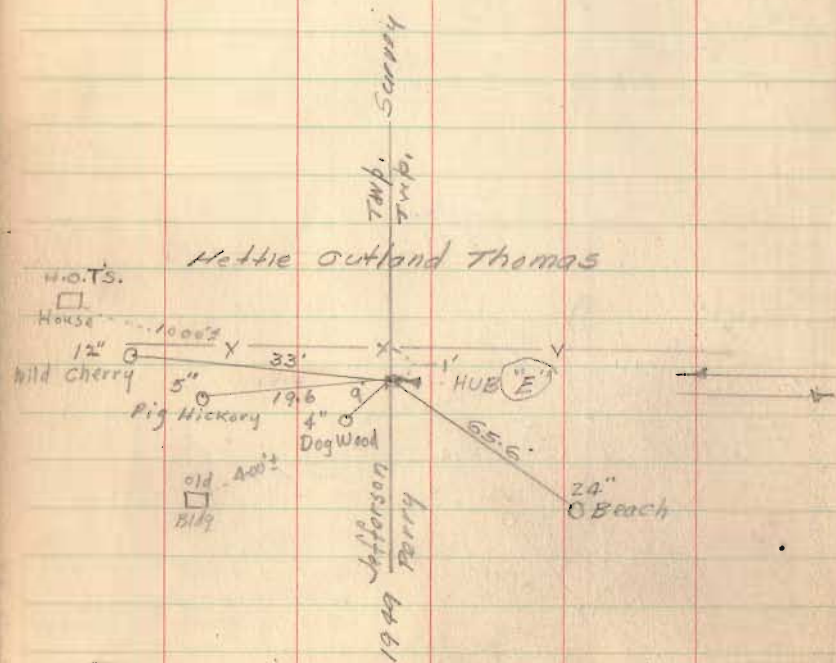
Carved 4-Twp
Stone - 14" below
Ground.

SEE 1500' E Monroe Twp. (A-1) Perry Twp. Zone Twp. 1200' (A-2)

Fixed \odot 's used for S-N-Twp. 1949 Random Survey

FB 689

SEE F.B. 682 - pg. 7 - forward for Survey Road 129 - 1949.



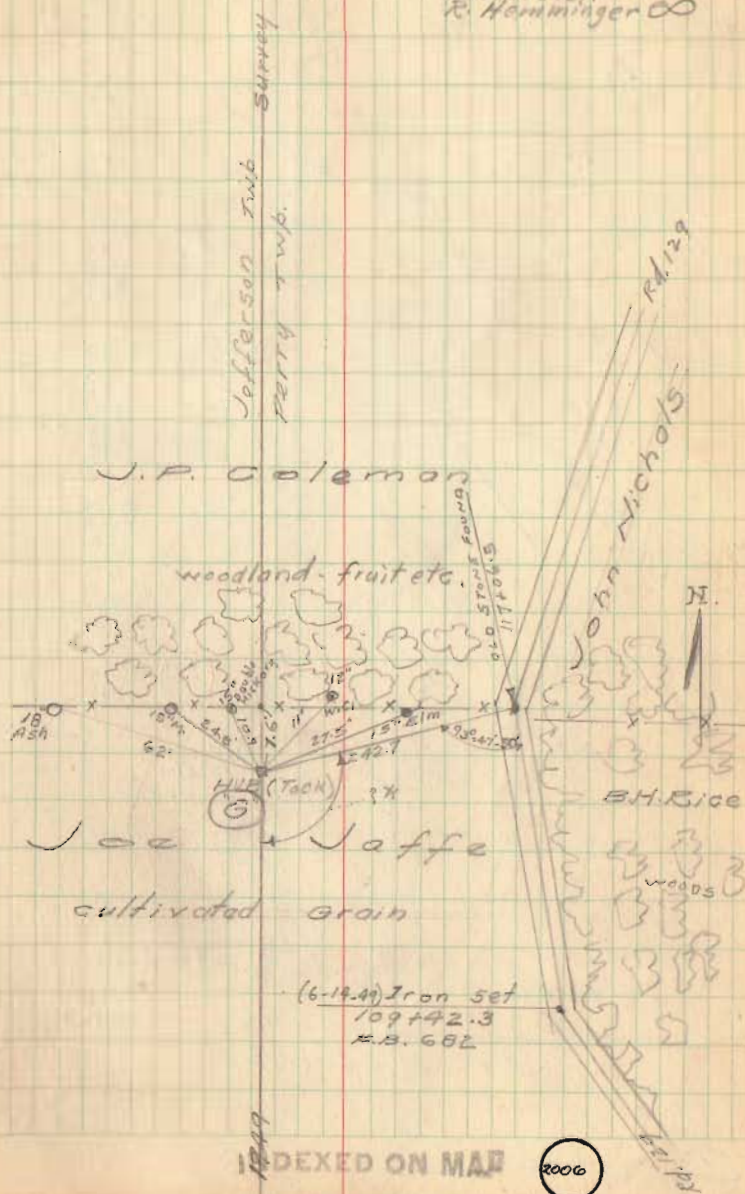
INDEXED ON MAP

FB 689

SEE F.B. 682 - pg. 12 - for sta. 117+06.5 (rd. 129)

August - 1949

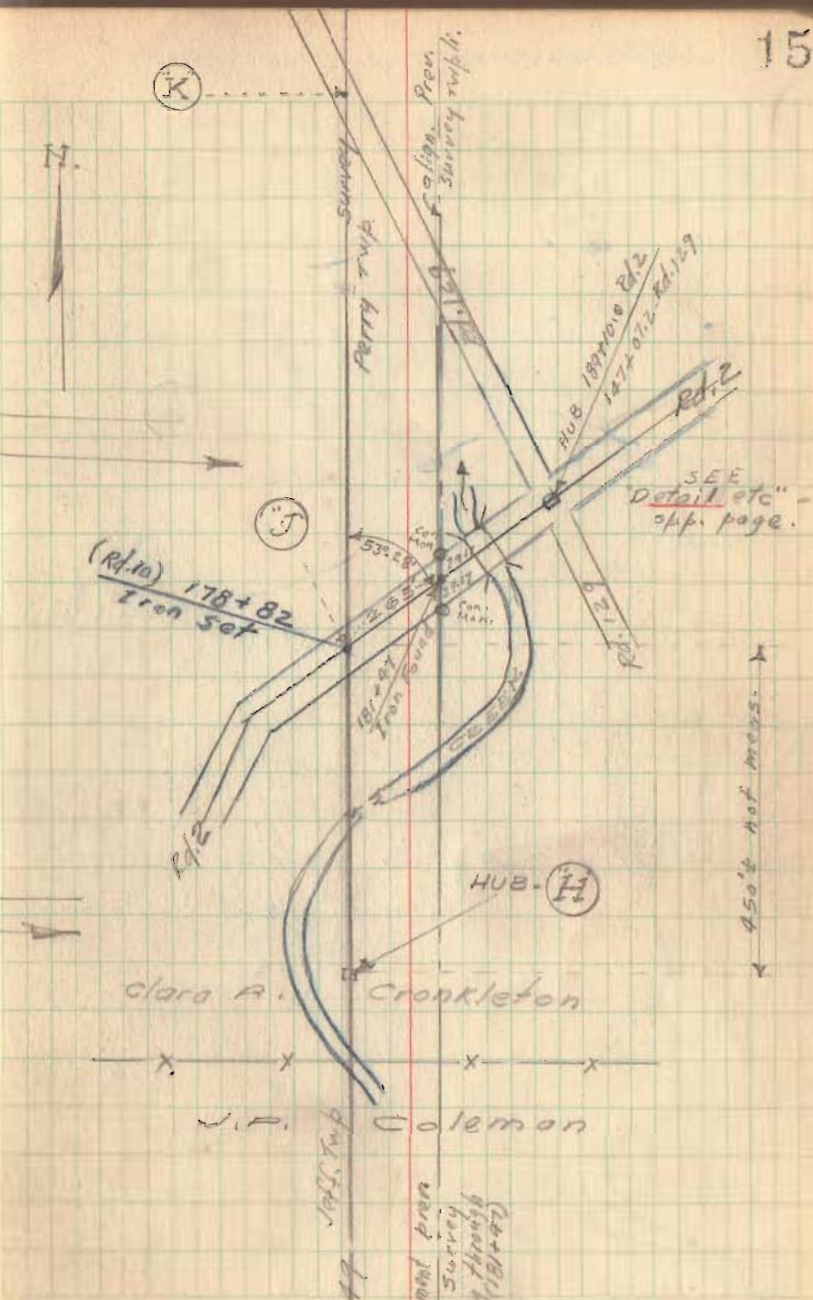
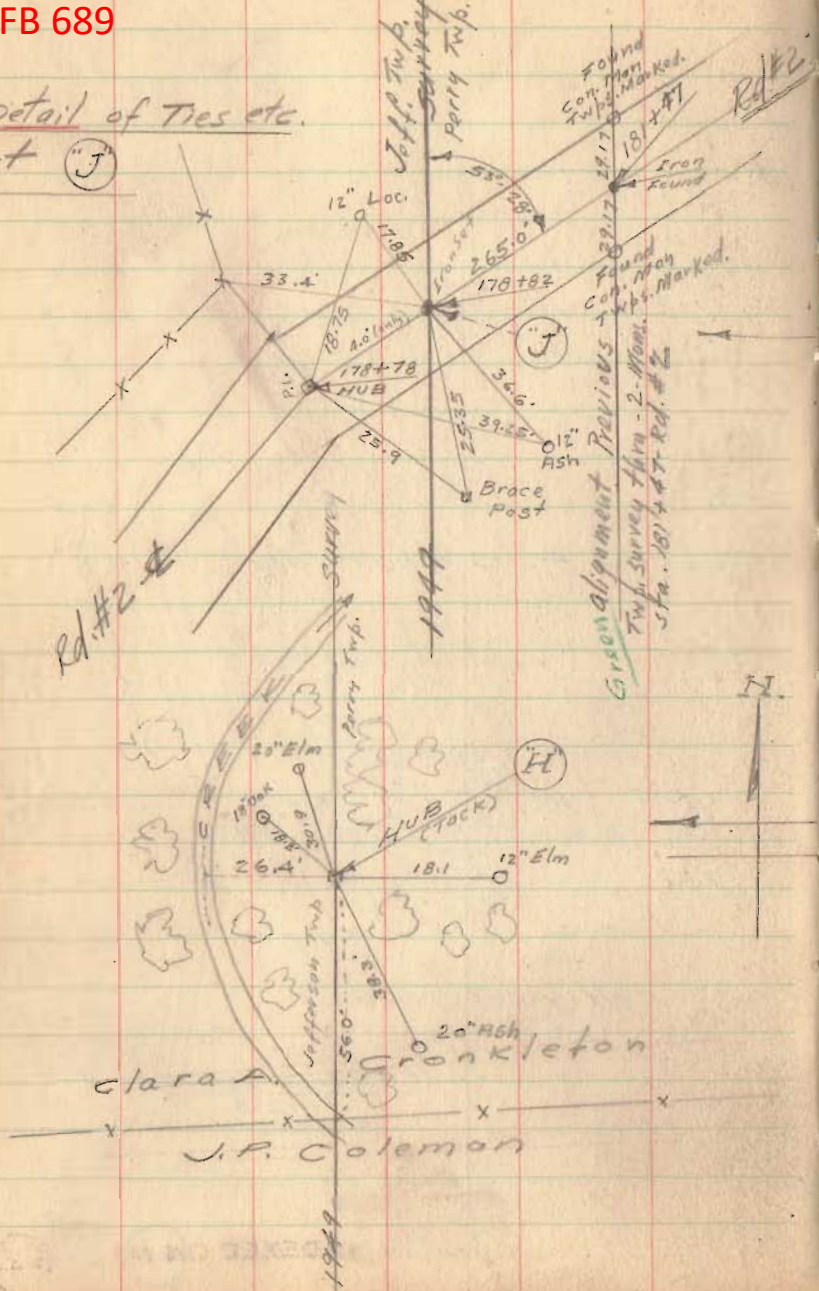
M. Haydel
P. Dodson
D. Mitchell
R. Hamming



FB 689

Jefferson - Perry Twp. Line 1949

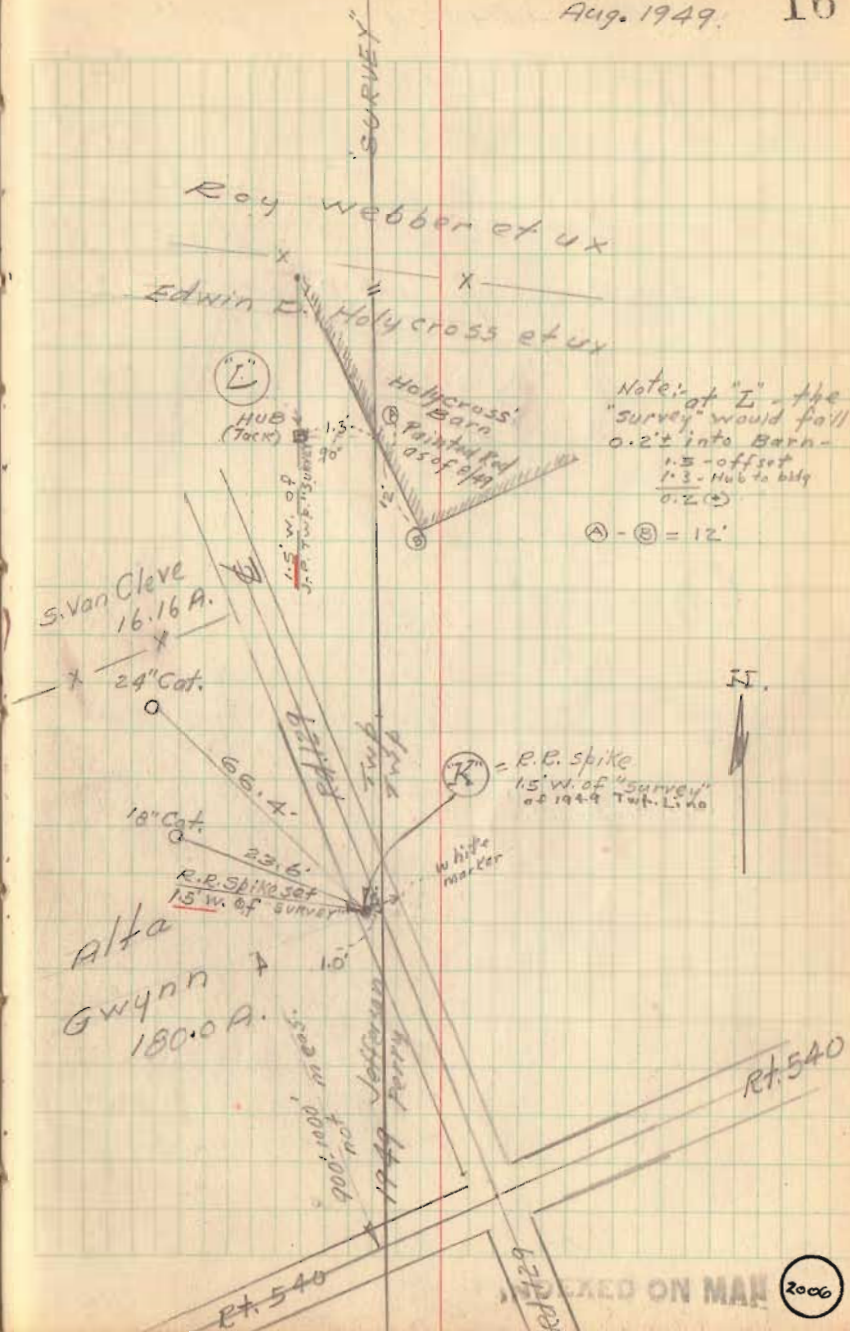
Detail of Ties etc.
at (J)



FB 689

SEE Page 17 for Detail at (L)

Note: "K" set with "X" at "L" - sighting South to "J"



Jefferson-Perry Twp. Line 1949

FB 689

Detail. Ties etc. at



Below

SURVEY



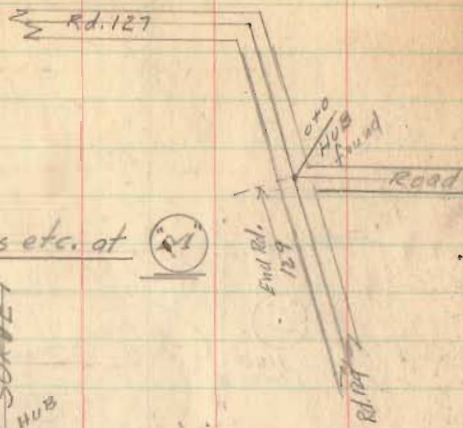
ROY

webber

RE. - TWP. STONE
(ABOVE)

Jeff. Twp.
Perry Twp.
1949

This stone sets 10" above ground - is chiseled stone (sharp with top line) - Messrs. Milton C. Crankleton and Roy Webber identified stone (8-30-49) as being "Twp. Stone etc." always in their recollection - Morgan Hand.



Milton C. Crankleton

Same Party
Aug. 29-30
1949 17



7+96.00
4+23.35
322.65

Ray Webber

See Detail 'M' at Left.

15" Elm
Rt. 127

18" Elm

EDWIN D.

Molycross



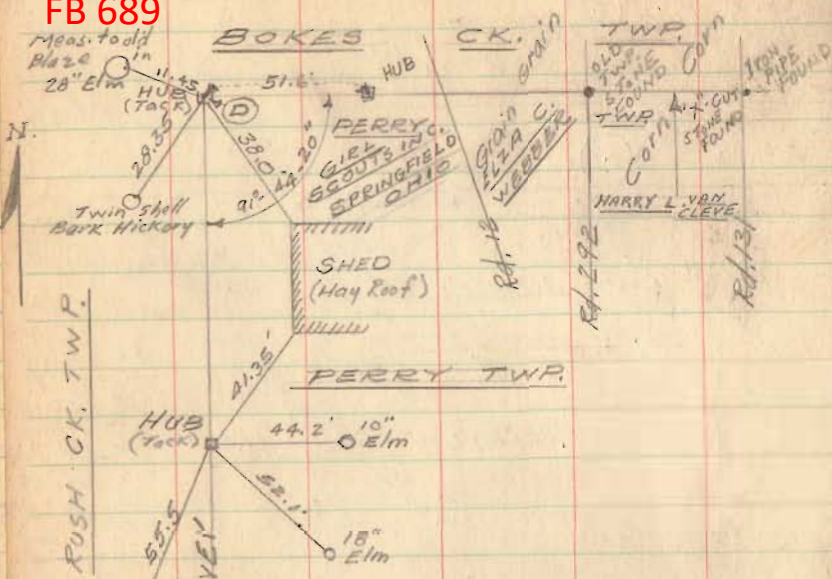
1949 Jeff.
Perry

INDEXED ON MAP

2006

FB 689

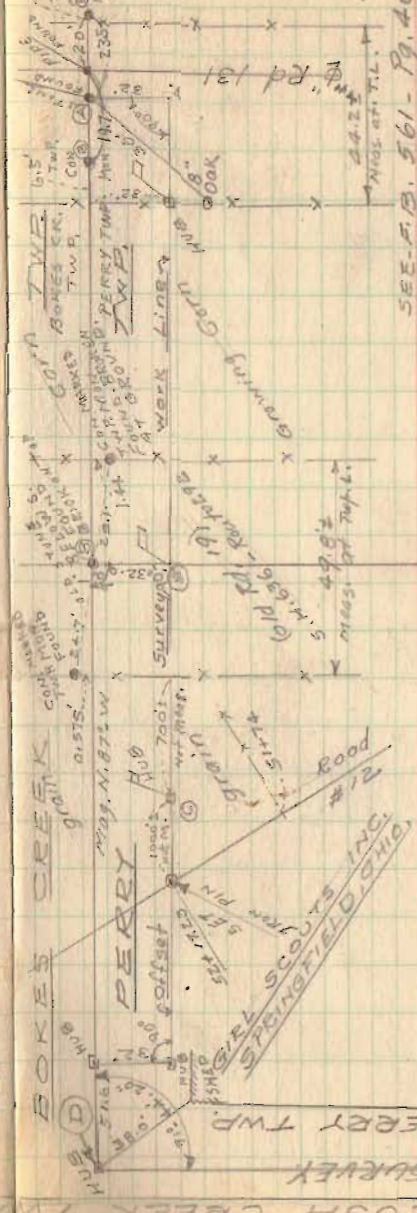
Jefferson - Perry Twp. Line 1949



Note: A "KEY MAP" 1" = 1000'
 Was made of Survey - see Files - as a work sheet.
 N-S alignment and E-W (pg. 12) determined by double-centering - heavy precision π used. Large
 (D) Geodetic Survey "targets" used - some shots being 2 miles \pm in length. M.H.

P.S. The relative accuracy of N.S. line was greatly aided by having the same interested party persons throughout the survey. M.H.

BOKES Twp. - Perry Twp. Line to intersect Jeff. - Perry Survey.



SEE P.B. 561 - Pg. 40
 Stone Found by 8-29-30-1949
 Used - Aug. 25-49.
 Placed 1941 Lincoln Perry on "X" on stone.
 (C) con. Mon. are re-placed brick. P. 4 "4" - 1 above the ground and "marked" name top.
 Stone found 1' below surface of had brick on it.

SEE - P.D. 560 - pg. 40
 stone above is 0.4' N. of line between mans.

Eng's. Note: (A) (Rd. 131) and (B) (Rd. 192) were only points available for alignment of Perry Twp. - Bokes Creek Twp. Common line Survey, accordingly they were used to project westward to intersect the N.S. Survey at (C).
 May, N.O.S.E. 1949 SURVEY

Note: Survey this page two E. to west to intersect Bokes ck. - Perry Twp. survey.