

Road No. 201 Union Twp

Stakes set 20' R&L from #

7+00 Mon (Set)

2+00 Mon (Set)

1822

INDEXED ON MAP

Clerk - Hot

7/10/40

E.K. Corc

G.W. Wilgus

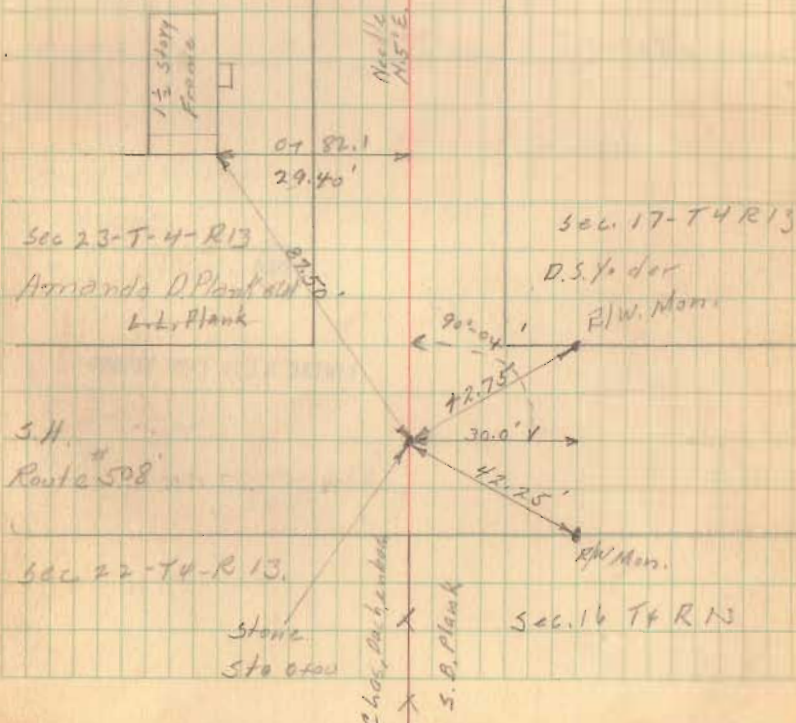
M.E. Janke

W.R. Wright

60

8+45  
Drive  
x x x  
8+30

Fence ← 7+00 → Fence  
15.5' 14.0'



Road No. 201 - Union Twp.

17+00 Mon. (Set)

12+00 Mon. (Set)

1872

INDEXED ON MAP

7/10/40

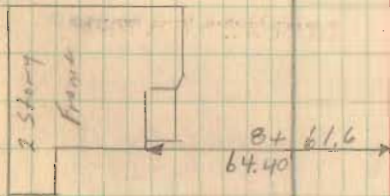
61

17+00  
Fence ← 15.0' → 18.0' → Fence

12+00  
Fence ← 15.0' → 14.2' → Fence

Hazel M. Headings

9+85  
x  
L.L. Plank









47+00 Mon. (Set)

42+00 Mon. (Set)

36+00 Mon. (Set)

31+00 Mon. (Set)

1822

INDEXED ON MAP

47+00  
19.5' 7.0'

44+81  
Drive  
44+65

42+93

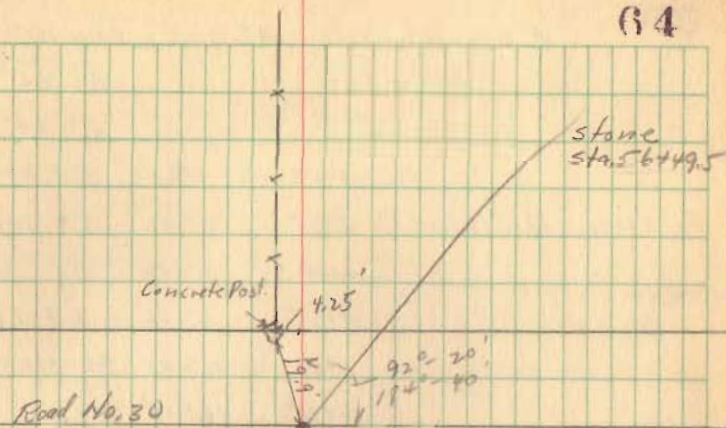
Drive

42+73

42+00  
17.3' 8.0'

36+00  
18.5' 11.5'

Fence 31+00 Fence  
15.5' 13.6'



1822

INDEXED ON MAP

54+00 Mon (Set)

54+00  
 21.0' 9.0'

A horizontal line with arrows at both ends is shown, with '54+00' written above it. Below the line, two segments are marked with '21.0'' and '9.0''.