

Road 133  
Perry Township

Staked 25' from E for 50' Road  
Restaked 30' from E for 60' Road 0+00 to 49+50  
Sept. 2 - 1937

Wagon  
E. Wright  
G. Wilgus  
J. S. S. S. S.  
F. Prosser

Sta. 0+00 To 12+96 No Record.

60' sta. 12+96 To 49+50

(1833) Commissioner's Journal Vol. 4 Page 57

see sketch in file Road No. 133

Co. List Book D Page 36

13+00

12+00

11+00

10+00

9+18.44 P.C.

5+00

1+00 for r/w posts

1744

INDEXED ON MAP

61

Sept. 9 - 1936  
O'Connor  
F. Wright  
Grover Wilgus  
Max James  
Joe Roberts

Δ 66-42 R-573.69

P.C. 9+18.44

P.L. 12+96

AT 15+26.29

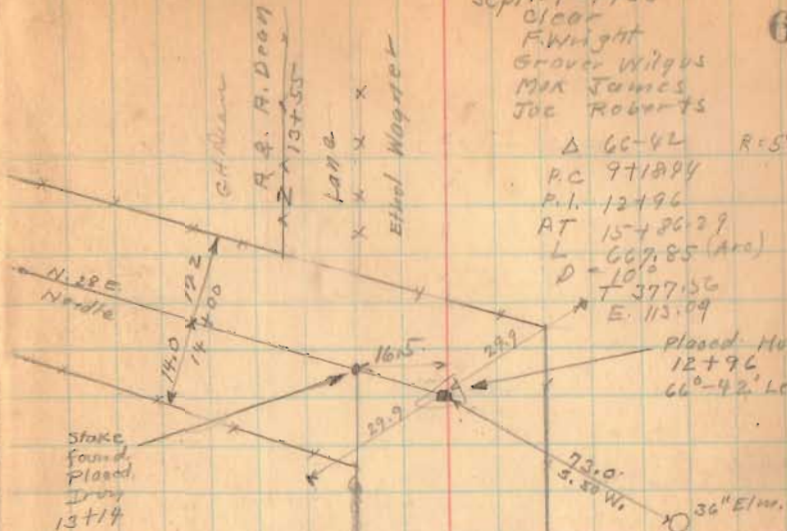
L 667.85 (Arc)

D 10.5

E 377.56

E 113.09

Placed Hub  
12+96  
66°-42' Left



J.C. Mann

Flood 133

17+52

15+86.29

P.T.

15+00

14+00

1744

INDEXED ON MAP

9-9-36

62

17.4 14.5  
33+00

14.7 14.5  
31+00

14.7 15.0  
29+00

15.3 16.2  
27+00

15.8 18.7  
25+00

15.6 19.6  
23+00

15.2 17.5  
21+00

15.6 16.0  
19+00

17+52  
Found Hub  
0°-48' left



15.4 16.4  
17+00



Road 133

43+00

42+00

38+00

34+57

30+00

25+00

21+00

1744

INDEXED ON MAP

Sept. 11-1936  
Clear  
F. Wright  
G. Wilcox  
Max James  
JOC Roberts

63

83.0 15.9  
47+00

21.9 15.8  
45+00

18.3 16.0  
43+00

Scale & Adjustment  
Elio Willson  
A. J. Skidmore



18.3 17.0  
41+00

17.6 17.0  
39+00

18.4 15.5  
37+00

19.5 15.8  
35+00

34+57  
Stone found  
Left  
0° 35'

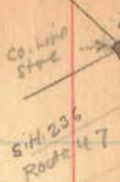


70.9 28.0

9-11-36

64

Road 133



Length 4950 Feet  
Length Miles  
Length Miles

A - Old Union - Logan County line stone  
Top Broken

B. Iron Placed

C. Hub. <sup>30</sup> at RT/S corner of Road.

D " <sup>30</sup> " " " " "

DB = ~~32.67~~ 39.30 Sec. 40-15' 1.310  
CB = 32.67 39.30 <sup>30</sup>  
139.300

AB = 13.85

sighted from A TO E (offset 3' West)  
and set D and C as shown

(49+50) Co. line Posts

(48+97) Left only

(48+75) Right only

(46+00)

(1744)

INDEXED ON MAP

