

Road 2

23+00

20+00 90° from Brookside

18+43.5

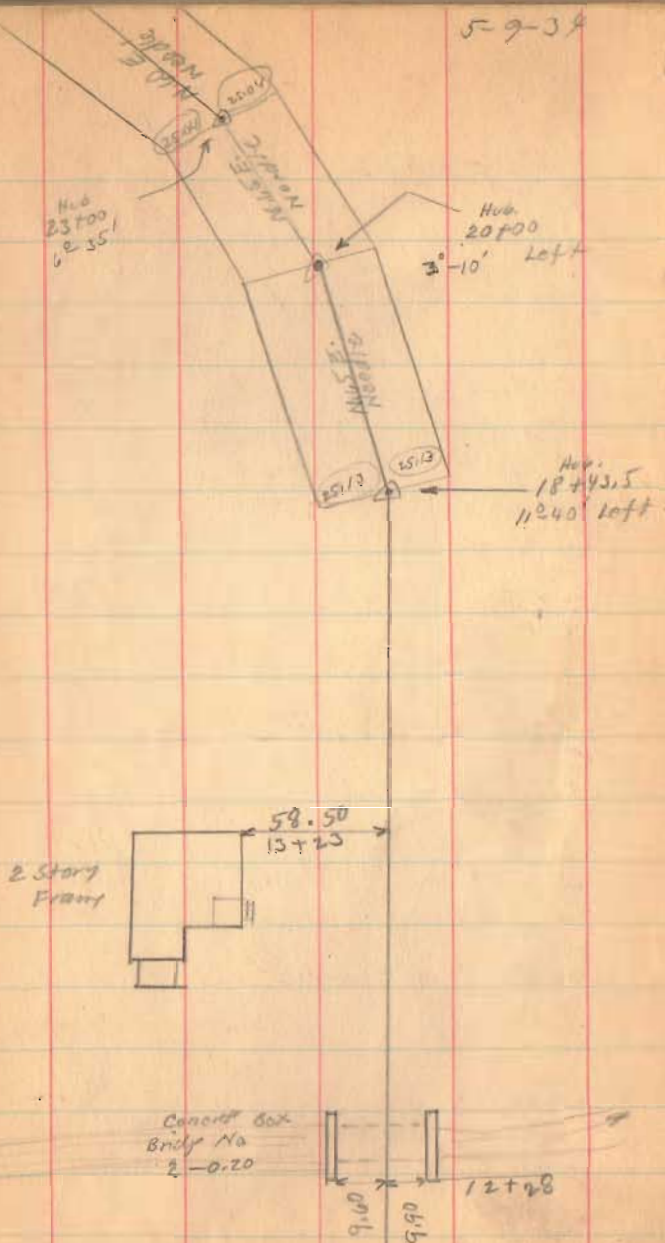
14+00

1575

INDEXED ON MAP

5-9-39

51



Road 7

54+33 Left Only 90° Backset

54+20 Right Only

47+50

42+15 90° Backset

37+00

1575

INDEXED ON MAP

5650
5433
217

5-10-34

53

Bert Wickham

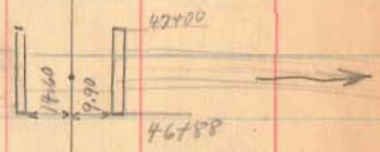
54+50 (lane)

Wm. Boyd

H.W.
54+03
6°-12' Right



N. 20° E.
N. 10° E.



Wm. Boyd
41+84
S.L. Corbett

R.R. spike set
1873
H.W. 42+15
0°-53' Right

Wm. Boyd
41+24
S.L. Corbett

N. 10° E.

H.W.
27+00
5°-16' Right

25+04

25+00

Road. 2

77+00

72+00

66+00

60+00

90° from fore site.

56+50

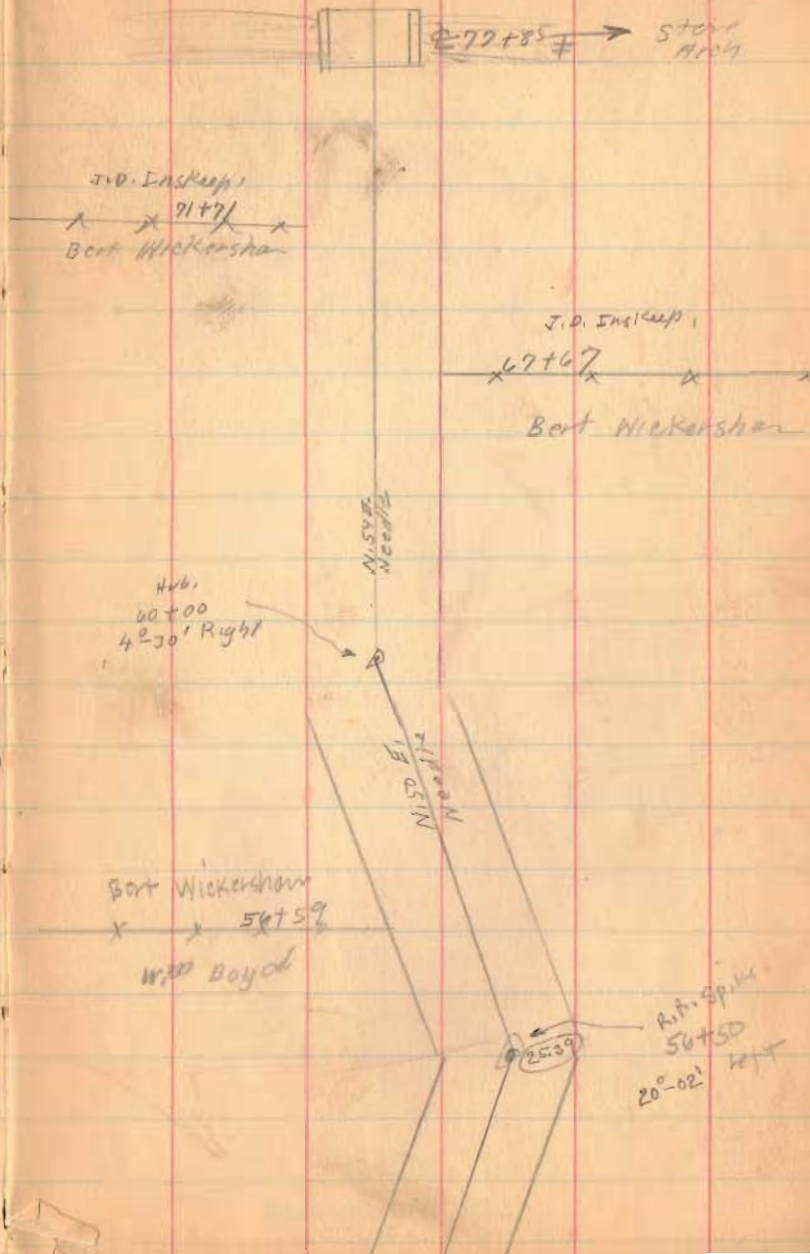
Right Only

1575

INDEXED ON MAP

5-10-34

54



Road 2

103+00

96+00

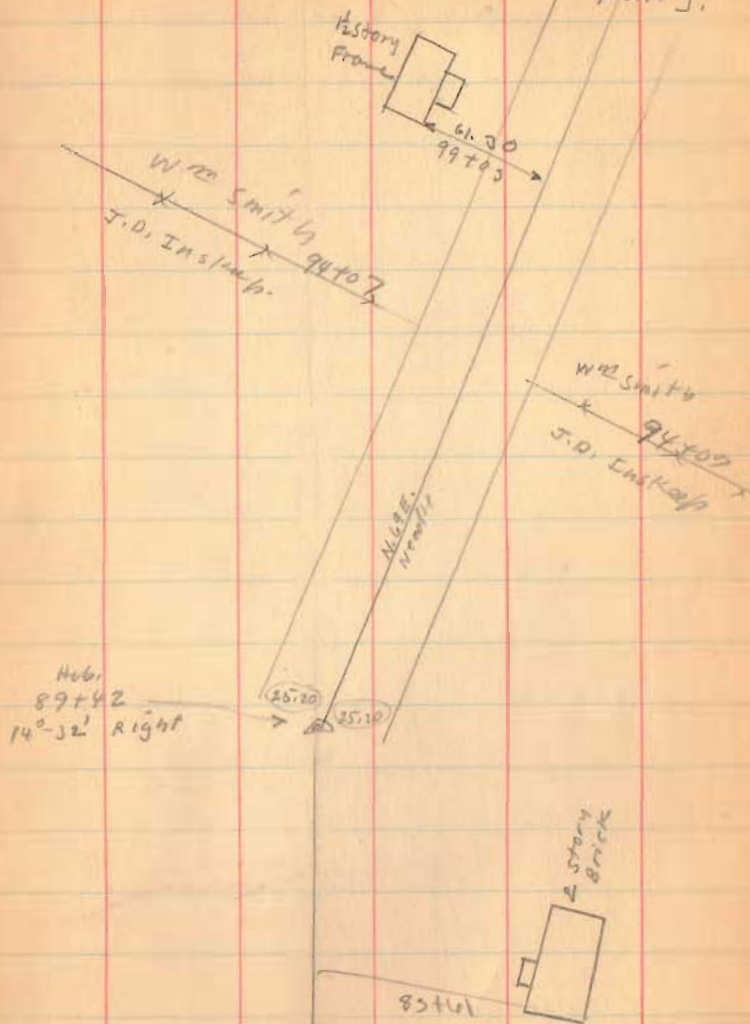
89+42

82+00

1575

INDEXED ON MAP

May-16-1934
Clear-Cool
Wright
Mills
Reynolds
Henry.



Road 2

120+00

115+50

109+00

1595

INDEXED ON MAP

119700

115+91.5
Dom Found.
No Angle.

Frank Gregg.
107+30
W^{est}. E. Smith

Concrete Hole
Bndp No.
2-195

5-10-34 56

Endic

118722

M. O. Cronkleton.

Floyd McKay

2 story
Frame

8860
113701

Floyd McKay.

104+07

W^{est}. Smith

Road 2

159+27 90° from Backsite

154+00

148+55

142+00

1575

INDEXED ON MAP

5-16-38

58

Hv.
159+27
1°04' Right

Iron Found
148+80
0°07' Left



Road 2

195+00

190+00

188+50

184+25

1575
INDEXED ON MAP

May-23-1934 60

Dear
Wright
Mills
Rogers/Walker
Herring

Hub
187+10
0'-0" Right

E.W. Elliott

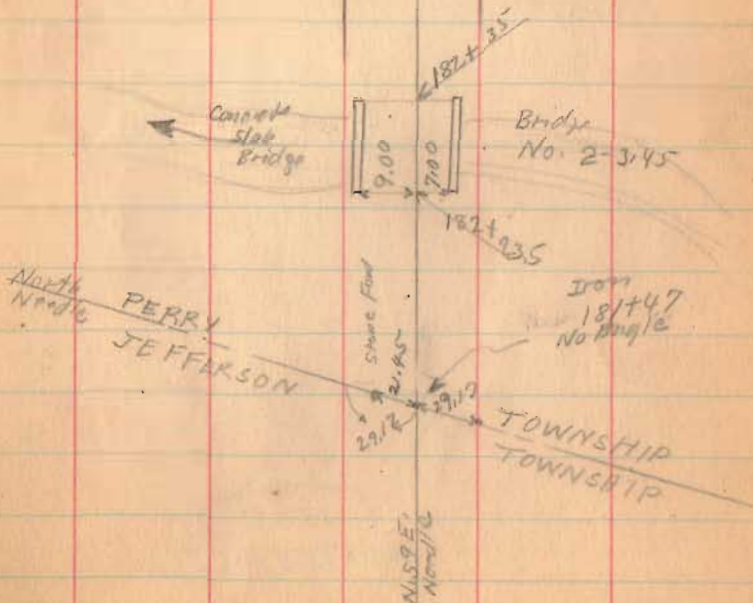
E.W. Elliott

Road 129

Road 129

Wm K Crankston

Wm F Crankston



Road 2

225+00

221+00

215+00

213+00

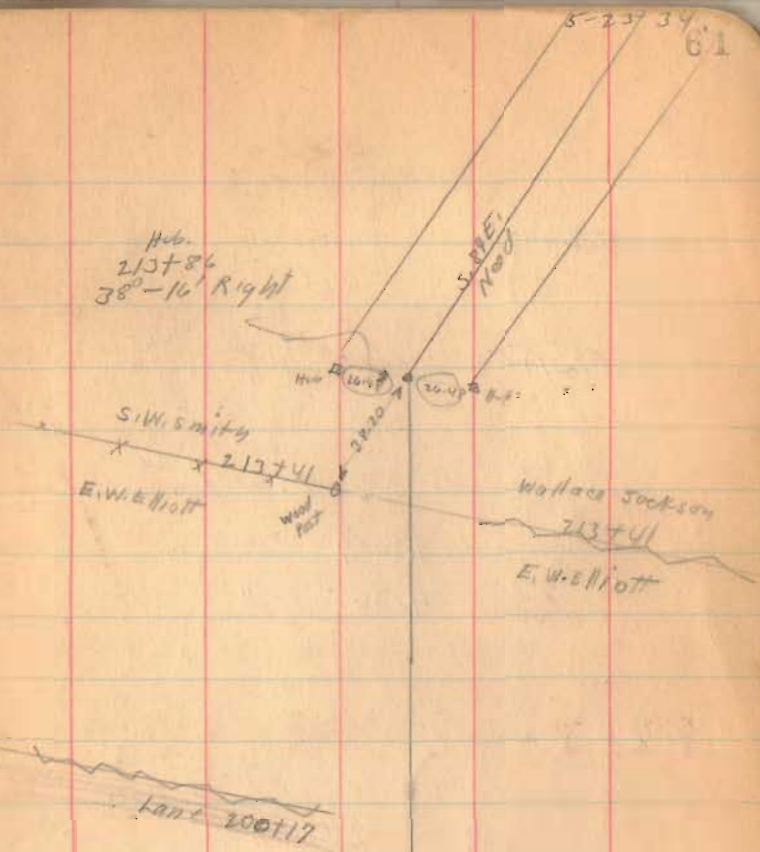
209+00

202+00

1575

INDEXED ON MAP

61



Road 2

234+00 Right only 90° from Beeksite

Long Run

231+00 Right Only

Length 23025 Feet,

Length 4.3607 Miles,

4.36 "

229+80

1575

INDEXED ON MAP

NORTH GREENFIELD CEMETERY

Continued on Page 65

65

Bell
Mary A. 1864-19
Nancy E. 1859-1885
George 1838-1917

Iron Found.
230+25
No. 1141/2

S. 144 E.
N 1/4

5-23-34 88

204+00
Hub

3040' Left

Coat Clapsaddle

x 202+80
E.W. Elliot

1029
BRICK
50000

ROAD 12
(See Book 574
Page 20)

NOTE: See F.B. 574 Page 20
FOR LOCATION OF STONE AT
INTERSECTION OF S.R. No. 292 (4-12)
AND C.H. No. 2 D. S. GILBERT P.S.
(9-10-1985)

(Continued on
Page 65)

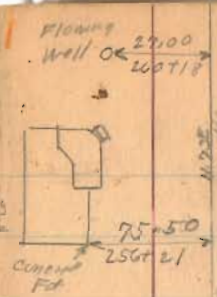
(See Book 574 Page 169)

Road 2
(Continued from Page 62)

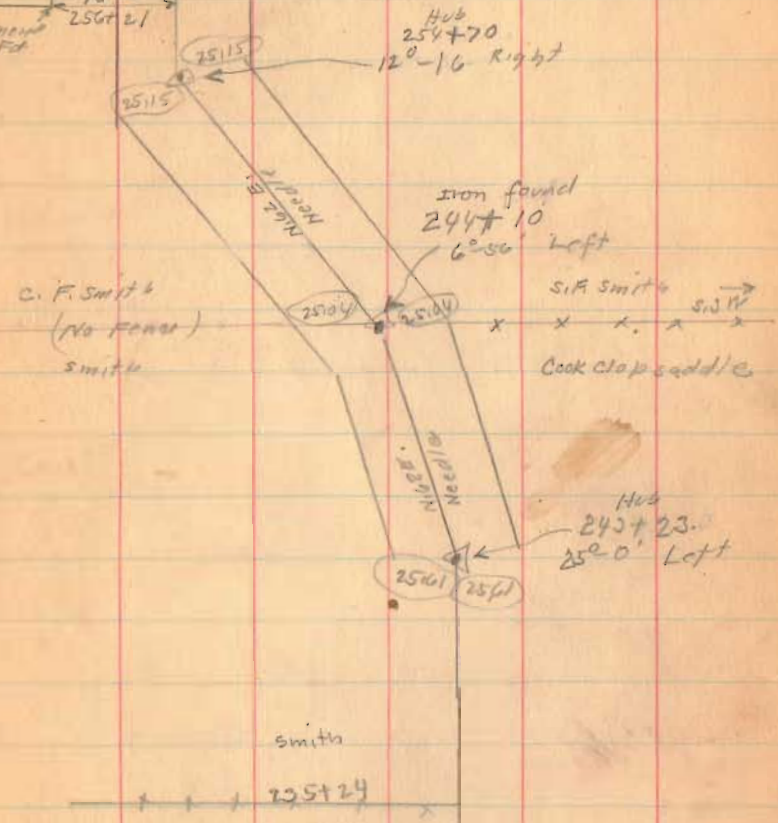
- 258+00
- 254+56.5
- 250+00
- 244+10
- 243+23
- 236+00

1575

INDEXED ON MAP



June-21-1934 65
Clear-Windy
Wing Mt
Mills
Rothfinder
Rickerden



NORTH GREENFIELD CEMETERY

Road 2

264+10

Right Only

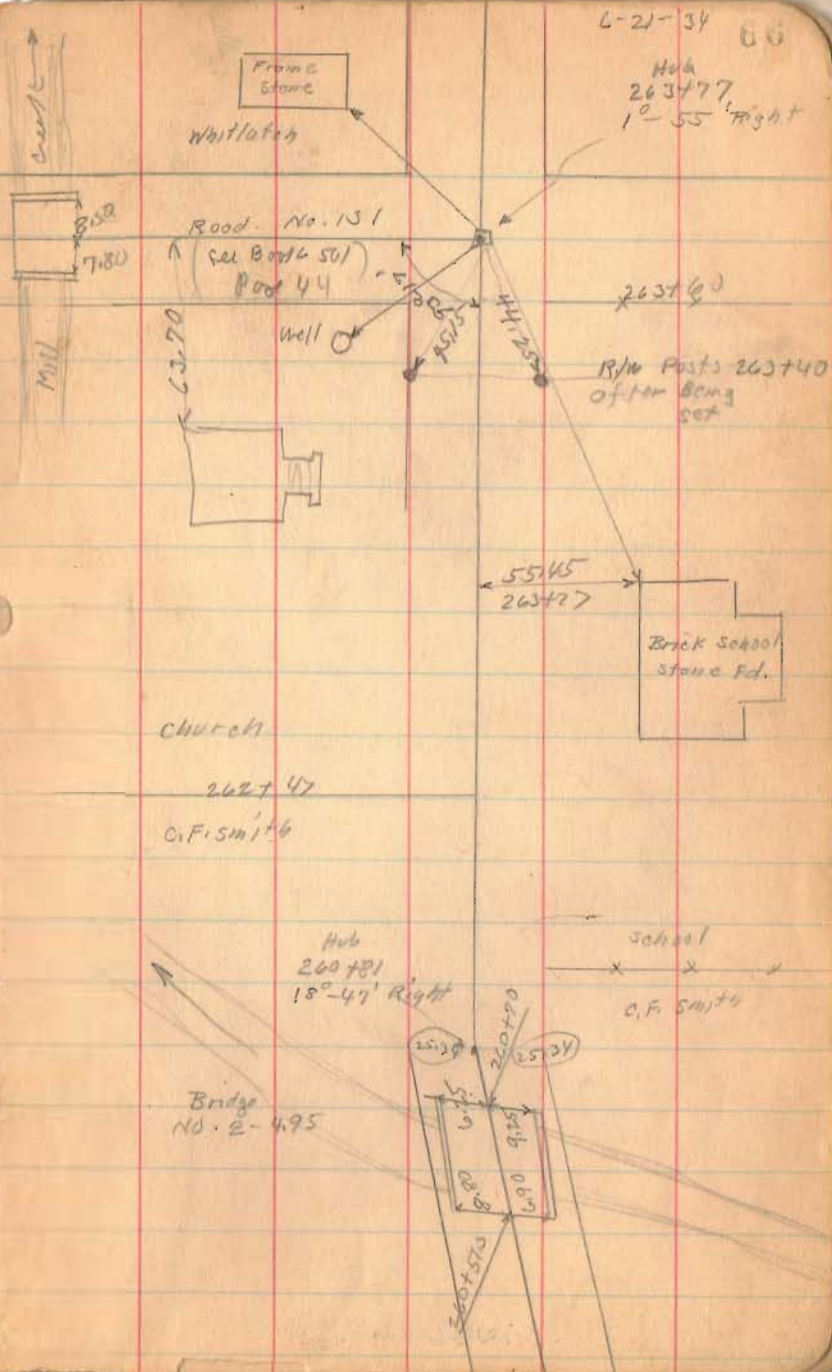
263+40

260+81

Long on left

1575

INDEXED ON MAP

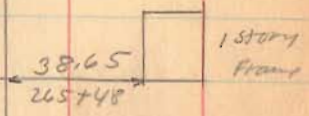
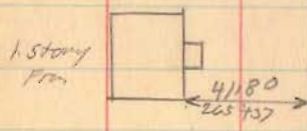
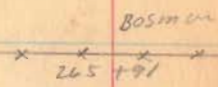
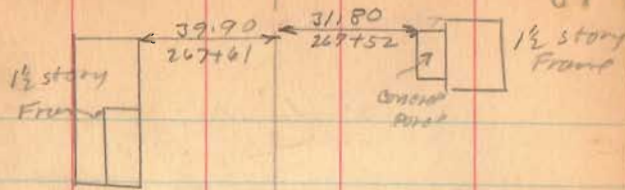


Road No. 2

Willis LeVan

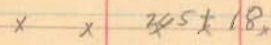
6-21-74

87

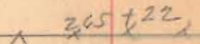


Wm Robson

Lot 16

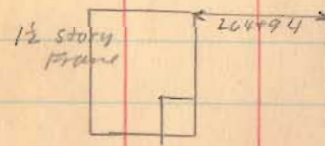


L. A. LeVan

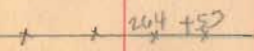


C. E. LeVan

Lot 19 & 18



C. E. LeVan



1595
INDEXED ON MAP

Road No. 2

276+61

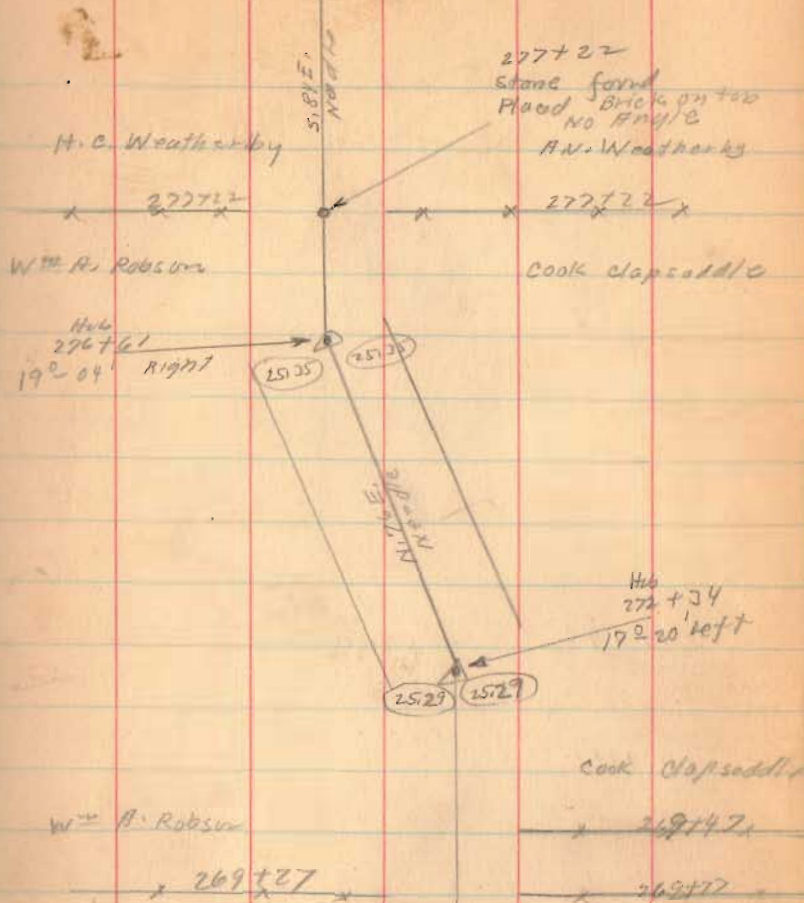
272+34

267+70

1575
INDEXED ON MAP

6-21-34

68



Road No. 2

312 + 58.6

309 + 00

305 + 27.5

90° Backsite.

299 + 86

INDEXED ON MAP

June - 27 - 1929

Clax
Wright
Mills
Rothwell
Harris

Hub
312 + 58.6
7°-57' Left

25.06

25.06

H.M. Southard

309 + 33

H.C. Weatherly

311 + 81
D.M.P.

H.M. Southard

309 + 33

H.C. Weatherly

S. C. E.
100 ft

Hub Found
4/18/66

Hub
305 + 27.5
0.45' Right
placed 3/8" B.
D.L.O.

805
1795
1800
8.2

Bridge
No. 2 - 6.70

299 + 86
Found stake
Plead stakes
and Iron

4°-28' Right

Found
4/18/66
D.L.O.

2502
2502

S.W. →
H.C. Weatherly
H.C. Weatherly

Road No. 2

330+00

328+00

323+35 = 322+35

323+35

318+50

1575

INDEXED ON MAP

C.E. Patton

from Ford
328+48
No Angle

6-27-34 11

Road No. 102
(Lukins Road)

L.M. & C.S. Riley

Kennedy
328+45
L.M. & C.S.
Riley



8516
325+74

No. 6
12-24 Right
323+35
322+35
C.M. & C.

2512

L.M. & C.S. Riley
X 319+00
A.M. Southard

L.M. & C.S. Riley

X 318+77 X

A.M. Southard

1 1/2 story
Frame

40.00
316+48

Road No. 2

349700

344229

90° from Bakesite

340225

336400

1575

INDEXED ON MAP

6-20-39

13

Lon = 352792

W.D. Gapsaddle

34775 Kennedy

Hut
344229
0°-45' Right

S. 55 E
N. 80 E



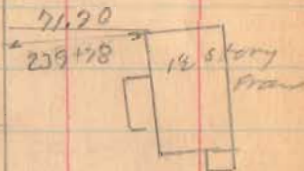
32.5 feet of 50"
C.I. pipe

(See Book C. Page 191)

M. H. Middle

209750

C. E. Patton



Draw

23872 1/2



51.7'

51.5'

Road No. 2

373+69

90° Forest

367+00

361+27.5

358+00

353+22.5

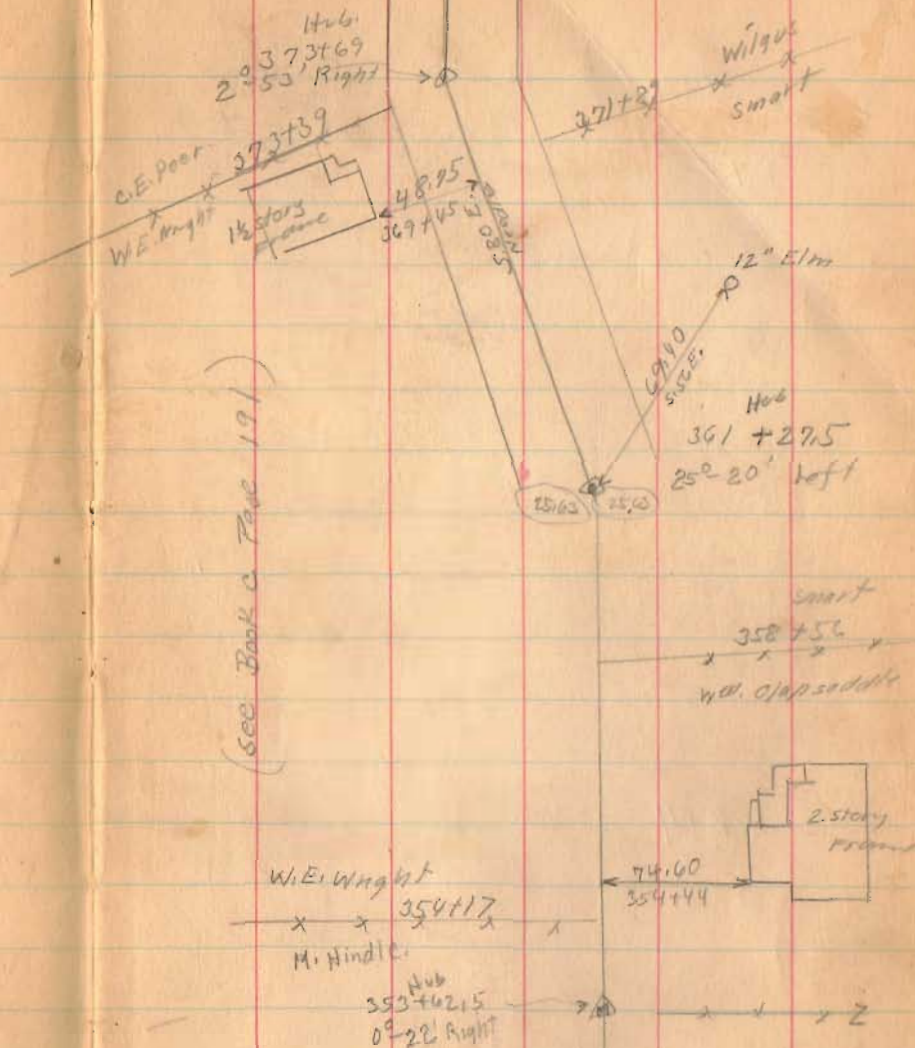
90° Bank

1575

INDEXED ON MAP

6-27-30

73



Road No. 2

411+00X

406+00

at Hut Right

400+58.5

90° from Backsight

1575

INDEXED ON MAP

June 28-1934

Clear - Hot

Wright's

Mills

Hunter

A.M.

75

Concrete
slab.
Bridg
No. 2-7.75



Johnson

403+13

The Home Loan Co.
of W. Virginia

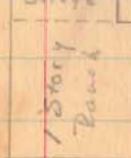
401+2
Station
15" E

EDGE

0.50 ft

J.B. Armstrong

Garage

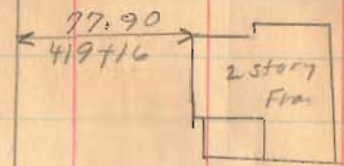


400+58.5
Station
0°-08 left

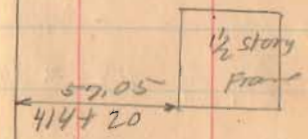
Found
6/18/34
D.C.

Road No. 2

416+00

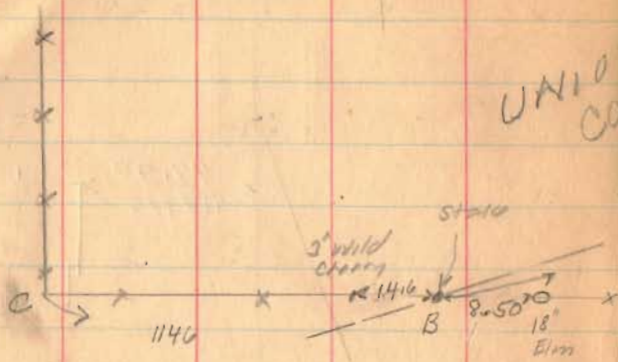


415+04 Ortman x Johnson



Road No. 2

Length 42210 Feet
Length 7.9943 Miles
7.99 Miles



Book D Page 36 shows $AB = 20$ Poles
 $B.C = 49$ Poles
My Measurement $AC = 1146$ feet

$\frac{20}{69}$ of $1146 \approx 332.17$ as used

421+40

420+40

1575

INDEXED ON MAP

UNION COUNTY

332.17

OUTSIDE
N16E
Needle

N14E
Needle

21+48

1138.5

(See Book 285 Page 53)

6-28-34

77

Hub
422+10
End
of Co. line.

Sec. 33-30' = 1,199.2
25 (1,199.2) = 29.98

old square
sand stone
found
about
18" above ground

LOGAN COUNTY

Hub
421+48
Nailing

H.F.
421+40
24 2/30 left

25.89

N16E
Needle

Hub
420+40
15-10 left

25.89

220+17

Addendum to Field Book

No. 579

pgs. 50-77

Co. Rd. No. 2

P. 1. 15

August, 1989

Co. Rd. No. 2

Sta.

0+00

2+00 Found Hub, set $5/8"$ ϕ
re-bar in it.

3+25 Found old R. E. spike &
brick $6"$ deep, replaced
w. $5/8"$ ϕ re-bar.

18+43.5 Fd. Hub, set $5/8"$ ϕ re-bar
in it.

20+00 Fd. Hub w. brick, set
 $5/8"$ ϕ re-bar in it.

23+00 Fd. Hub w. brick, set
 $5/8"$ ϕ iron in it.

Nichols, Dill
Karn, Karibo, & T. Henry

22 Aug. 1989

①

Co. Rd. No. 2 cont.

Sta.

25+00 Fd. Hub, set $5/8"$ ϕ re-bar
in it.

27+00 Fd. Hub, set $5/8"$ ϕ re-bar
in it.

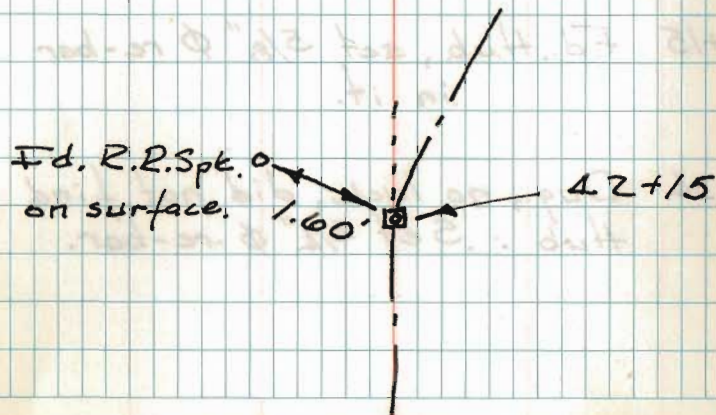
32+23.5 Fd. Hub, set $5/8"$ ϕ re-bar
in it.

34+75 Fd. Hub w. brick, set $5/8"$ ϕ
re-bar in it.

37+00 Fd. Hub, set $5/8"$ ϕ re-bar
in it.

42+15 Fd. Hub, set $5/8"$ ϕ re-bar
in it.

(2)



Co. Rd. No. 2 cont.

Sta.

54+33 Fd. Hub, set $5/8"$ ϕ re-bar
in it.

56+50 F.Bk. 579 pg. 54 calls for
R. R. spike - red mag. +.

60+00 Fd. Hub, set $5/8"$ ϕ re-bar
in it.

89+42 Fd. Hub, set $5/8"$ ϕ re-bar
in it.

124+15 Fd. Hub, set $5/8"$ ϕ re-bar
in it.

133+34 Dug, no luck, did not find
Hub. Set $3/4"$ ϕ re-bar.

Co. Rd. No. 2 cont.

(3)

Co. Rd. No. 2 cont.

Sta.

148+80 Fd. $\frac{1}{2}$ " ϕ iron. 6" deep.

159+27 Fd. Hub, set $\frac{5}{8}$ " ϕ re-bar
in it.

165+00 Fd. Hub, set $\frac{5}{8}$ " ϕ re-bar
in it.

166+50 Fd. Hub, set $\frac{5}{8}$ " ϕ re-bar
in it.

170+00 Fd. Hub, set $\frac{5}{8}$ " ϕ re-bar
in it.

178+78 Fd. Hub, set $\frac{5}{8}$ " ϕ re-bar
in it.

189+10 Fd. iron. @ Rd. 129

213+86 Fd. Hub, set 1" ϕ iron
in it.

Co. Rd. No. 2 cont.

(4)

Co. Rd. No. 2 cont.

Sta.

230+25 F.B.K. 579 pg. 62, calls for iron. red mag. +

234+00 Fd. 5/8" ϕ iron, witness to grave stone (57.05') checks o.k.

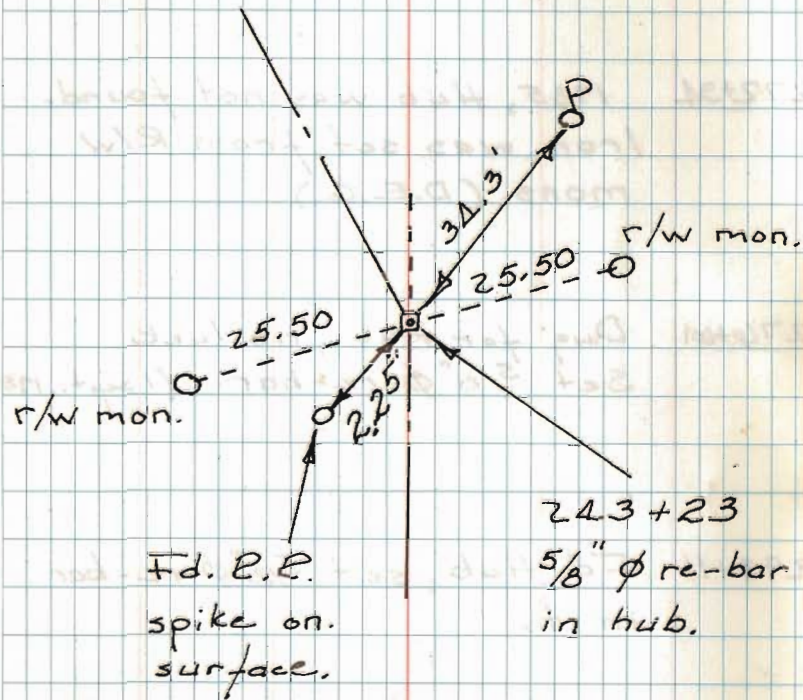
243+23 Fd. Hub, set 5/8" ϕ re-bar in it.

244+10 pg. 62, calls for iron. red mag. +.

254+70 Hub, found ca. 1985, an iron was set in it,

260+81 Fd. 3/4" ϕ , was set ca. 1985.

5



Co. Rd. No. 2 cont.

Sta.

263+77 Hub was found Jan. 25, 1983
7/8" ϕ iron was set in it. (C.N.)

272+34 1985, Hub was not found.
Iron was set from R/W
mons. (D.E.G.)

276+01 Dug for Hub, no luck.
Set 5/8" ϕ re-bar. (1 Sept., 1989)

293+11 Fd. Hub, set 5/8" ϕ re-bar
in it.

297+92 Fd. Hub, set 5/8" ϕ re-bar
in it.

299+86 pg. 70 calls for iron.
red mag. +

Co. Rd. No. 2 cont.

(6)

Co. Rd. No. 2 cont.

Sta.

305+27.5 Hub was found 4/10/66
5/8" ϕ Bar placed in it. (D.L.D.)

312+58.6 Fd. Hub, set 5/8" ϕ re-bar
in it.

323+35 Fd. Hub, set 5/8" ϕ re-bar
in it.

323+35 Back

322+35 Ahead

328+48 Intersection Rd. 132, found
5/8" ϕ re-bar on surface.

344+29 Fd. Hub, set 5/8" ϕ re-bar
in it.

Co. Rd. No. 2 cont.

(7)

Co. Rd. No. 2 cont.

Sta.

353+62.5 Fd. Hub, set $5/8"$ ϕ re-bar
in it.

361+27.5 Fd. $5/8"$ ϕ re-bar. Searched
for Hub, did not find any
traces. Re-bar was set by ?.

373+69 Hub was found 13 Aug. 1975
(C.N.), $5/8"$ ϕ re-bar was set in it.

384+87.5 R. R. spike found. 13 Aug.,
1975

396+60 Stone was found 6-18-64
(D.L.T.)

400+58.5 Stone was found 6-18-64

Co. Rd. No. 2 cont.

Sta.

420+40 Fd. Hub, set $5/8"$ ϕ re-bar in it.

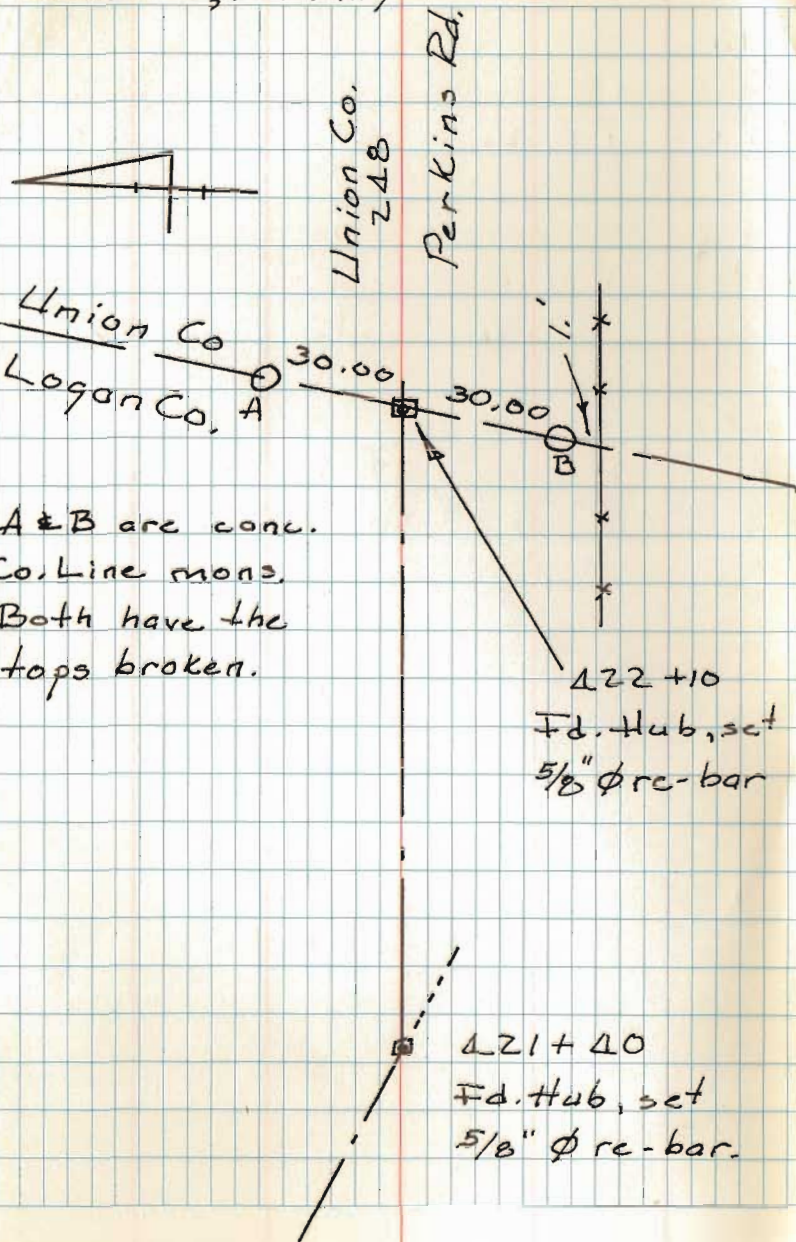
421+40 Fd. Hub w. brick, set $5/8"$ ϕ re-bar in it.

422+10 Fd. Hub at Co. Line, set $5/8"$ ϕ re-bar in it.

Nichols, C. Dill
C. Karibo, & T. Henry

30 Aug., 1989

(9)



A & B are conu.
Co. Line mon.
Both have the
tops broken.

422+10
Fd. Hub, set
 $5/8"$ ϕ re-bar

421+40
Fd. Hub, set
 $5/8"$ ϕ re-bar.