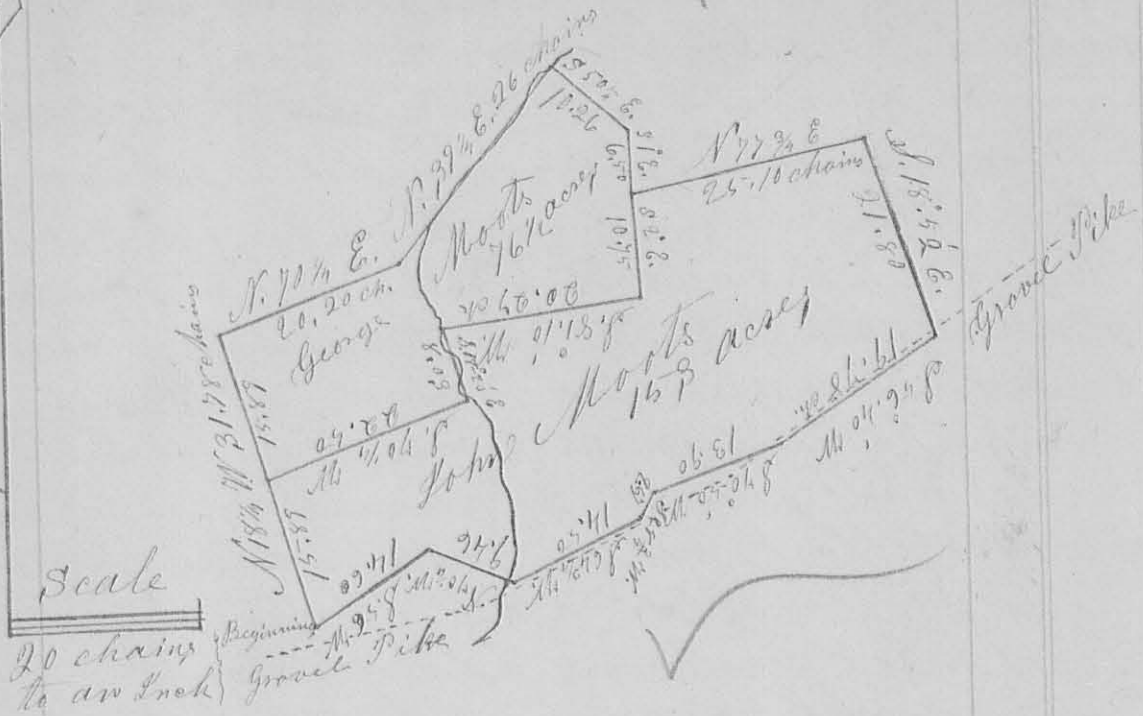


8625

Magnetic Meridian



Surveyor's Office Bellefontaine O.
April 29th 1858

The above plat represents the survey of 229 $\frac{2}{3}$ acres of land as surveyed by me, H. C. Moore Co. Surveyor of Logan Co. O., on the 6th 7th 8th 11 days of April A.D. 1858, for &c. by the request of George Moots Sen., for the purpose of ascertaining the exact number of acres contained therein, &c. More particularly for the purpose of dividing said 229 $\frac{2}{3}$ acres, between his sons John Moots &c. George Moots: in the following proportion, to wit: To the said John Moots one full &c. equal two third parts, &c. to the said ~~John~~ George Moots one full and third part. Said land situated and lying in Monroe Township of said County of Logan, and being a part of Virginia Military Survey No. 4479, Patented to Thomas Worthington which I surveyed in the following manner: to wit;

Beginning at a Stake between a Jack Oak
 24 Ln. Dim. & a Bur Oak 12 Ln. Dim. 24 ft. apart,
 and in the edge of Mackachack prairie,
 near the Gravel Pike, run thence $N. 18^{\circ} \frac{1}{4} W. 31.75$
 chain to a stake, from which I marked a Hickory
 thus 'X' 10 Ln. Dim. S. $51^{\circ} \frac{1}{4} W. 24$ links, & a Hickory
 14 Ln. Dim. N. $66^{\circ} \frac{1}{2} E. 27^{\circ}$ links; Thence N. $70^{\circ} \frac{1}{4}$
 E. 20.20 chain to a stake between 3 large W.
 Oaks; Thence N. $39^{\circ} \frac{1}{4} E.$ crossing Mackachack 3
 times, & passing up the channel of the same part
 of the way, 26 chains to a stone in the creek
 of Mackachack, & in a County Road; Thence with
 said Co. Road S. $50^{\circ} \frac{1}{4} E. 10.26$ chains to the centre
 of a forked Cherry three feet in Dim.;
 Thence S. $1^{\circ} E. 6.50$ chains to a stone from
 which a Bur Oak 22 Ln. Dim. bears N. $77^{\circ} \frac{1}{4} E.$
 11 links; Thence N. $77^{\circ} \frac{1}{4} E. 25.10$ chains to a
 Cherry 13 Ln. Dim. & a Black Oak 9 Ln. Dim.
 in the east patent line of the said Survey
 No. 4479. Thence with the said Co. Patent
 line S. $18^{\circ} 52' E. 21.80$ chains to a stone which
 I planted in the south side of the Gravel
 Pike ground, (25 ft. from the centre) & marked
 a W. Oak 'X' 12 Ln. Dim. S. $25^{\circ} E. 6$ links, & a
 W. Oak 11 Ln. Dim. S. $41^{\circ} W. 11$ links,
 Thence with the south side of the Gravel
 pike ground S. $56^{\circ} 40' W. 19.78$ chains to a
 stone. Thence S. $70^{\circ} 50' W. 13.90$ chains to a
 stone in a ditch; Thence with said ditch
 S. $28^{\circ} \frac{1}{4} W. 2.67$ chains to a stone in the ^{North} side
 of the Gravel Pike ground; Thence
 with the N. side of ~~the~~ the said Pike ground
 (25 ft. from the centre) S. $64^{\circ} \frac{3}{4} W. 14.50$ chains
 to a stone which I planted; Thence
 N. $70^{\circ} \frac{1}{4} W.$ Crossing Mackachack at about
 65 links, & passing by the south side

of a small Cherry tree at about
 130 links, 9.46 chains to a stone which
 I planted, from which a Bar Oak
 14 Ln. Dim. bears N. 15° W. 13 links, & a
 hollow Hickory 20 Ln. Dim. S. 15° E. 13
 links. Thence S. 56° W. 14.60 chains to
 the place of Beginning, containing two
 hundred twenty nine & one half (229½) acres

I then run the division line in the
 following manner; to wit;

Beginning at the stone at the sixth
 station of the outside line, from which
 the Bar Oak 22 Ln. Dim. bears N. 77° E. 11
 links, run thence S. 2° E. 10.75 chains, nearly
 with a Co. Road but crossing it, to a tall
 forked cherry stump used as a gate post,
 near the barn on the premises, thence
 S. 81°-10' W. 20.27 chains to a cherry stake in
 the creek of Mackachack, from which a
 Cherry 2 Ln. Dim. bears S. 36¼° E. 21 links; Thence
 S. 18°-20' E. 8.03 chains crossing Mackachack three times
 to a stake from which a Bar Oak 30 Ln. Dim. bears
 N. 61° W. 27 links; Thence S. 70¼° W. 22.50 chains to a
 stone which I planted in middle of the west
 line of the whole 229½ acres, from which a
 Black Walnut 12 Ln. Dim. bears S. 15½° E. 60 links
 & a W. Oak 24 Ln. Dim. N. 64° W. 19 links;

Thus measuring off to George Moots 76½
 acres from the N. W. part of the farm;
 and to John Moots 153 acres from the South
 East part of the farm; as represented by the
 foregoing plat. The bearings & distances marked on the plat

David Randle }
 Henry Grimey } Chain Men
 I hereby certify the foregoing plat and report
 to be correct. H. C. Moore, County Surveyor
 of Logan Co. Ohio