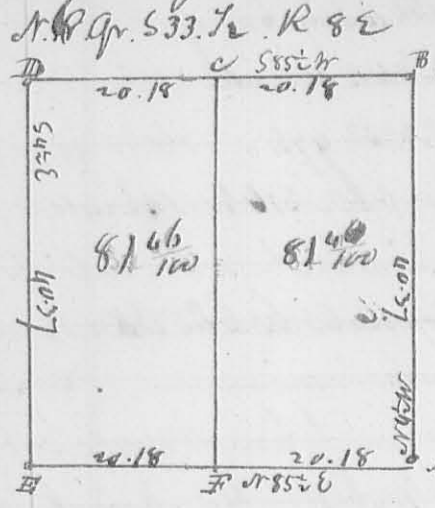


262

January 1837

Corner

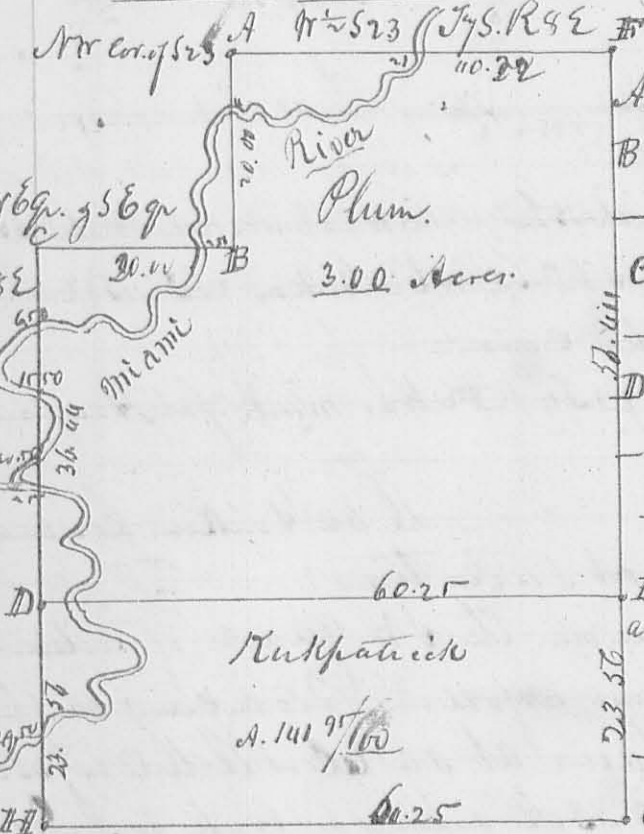
N 362



At A. Orig. q. Corner.

B. N. E. Corner of the Sect  
 C. Elm 18 1/2 D 52 1/2 W 10 Suits. Wood 2. 569 8 65  
 D. Gr. Corner between 533.72 28.  
 E. Sugar 8. 1/2 S 50 1/2 W 17 1/2 S. 1000 4. 587 = E 192.  
 F. Sugar 6. N 66 1/2 36 S. Sugar 569 W 7 Suits -  
 Surveyed June 27, 1837.  
 L. A. Hopkins Sur. G.

N 363



Description of Corner

A. N. W. corner of 523. 1/2 R 82 E  
 B. W. Oak 20 In. dia 585 1/2 34 Suits  
 - Ditto 18 .. " N 84 W 88 "  
 C. Beech 30 1/2 D. 574 8 9 "  
 - Ironwood 2 .. " N 62 W 6 "  
 D. Gray Ash 24 .. " N 31 W 29. "  
 - Jack O. 4 .. " S 18 E 36 "  
 - W. Oak 22 .. " S 84 E 30 "  
 - ditto 12 .. " N 15 E 48 "  
 at F. Gr. Corner between 523 1/2 & 16.  
 G. Gr. Corner on South line of 23.  
 H. Buckeye 15 1/2 D. N 42 1/2 E 8 1/2 Suits  
 I. Hickory 8 .. " S 89 W 46 "

The foregoing Survey was made for Mr. Kirkpatrick June 28, 1837  
 L. A. Hopkins S. G. O

Wm. Hopkins 3  
 J. P. Cherry 3 Ch. Men.

N 364



This Survey was made at 3 1/2

was divided East and West by one  
 February 3, 1837. the line N. P. having  
 been previously made.  
 2 W. O. Grubs. between two W. O. Oaks  
 - N. W. Present bearing  
 L. A. Hopkins Co. Sur. G.

at N. of 99 1/2  
 S. of 99 1/2  
 4 to line

not standing now