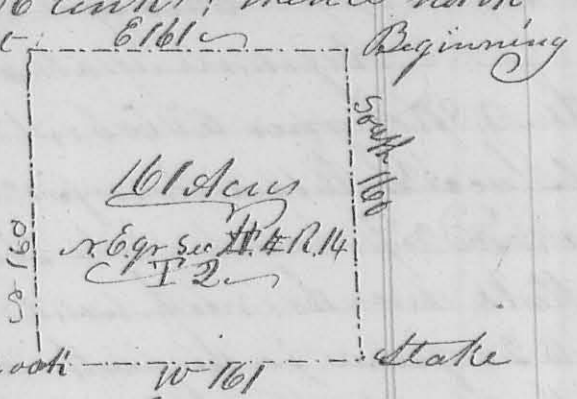
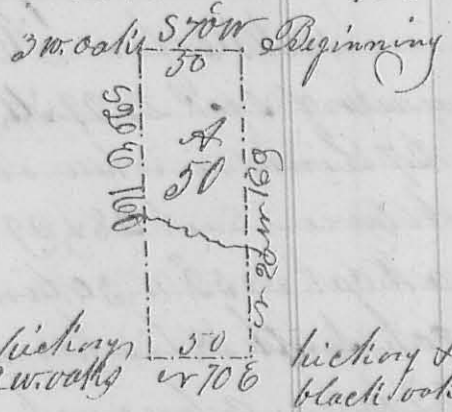


134  
 line south 160 poles to a stake in a prairie, thence  
 west 161 poles a white oak east 56 Links; thence north  
 160 poles to a stake in in the north line of the Sec  
 thence with said line east 161 poles to the  
 beginning containing 161 acres, the or 6 yr of said sec. white oak



John Moore }  
 Dennis Moore }  
 T. M. Marmont }  
 S. L. L.

8761  
 B. Long } 1<sup>st</sup> mo. Jan. 20<sup>th</sup> 1832 } Survey no 172  
 no 172 } Surveyed 50 acres for Benjamin Long  
 Beginning at a white oak the N.E. corner of  
 Thomas Worthington's survey no 4479; thence with the  
 north line of said survey S 70° W 50 poles to 3 small  
 white oaks; thence S 20° E crossing Mackachae at 78 poles  
 160 poles to a hickory and 2 white oaks, thence S 70° E  
 50 poles to a hickory and black oak in the east line of the  
 original survey; thence with said line S 20° W 160 poles  
 crossing the creek to the beginning, it being in the  
 N.E. corner of Worthington's said survey



Jeffrey Williams }  
 Henry Short }  
 T. M. Marmont }  
 S. L. L.

8188  
 Alex Long } 3<sup>rd</sup> mo. March, 2<sup>nd</sup> 1832 } Survey no 173  
 no 173 } Surveyed 129 1/2 acres for Alex. Long  
 Beginning at a maple, large red oak and two  
 small ironwoods the south west corner of Ebenezer Zane's  
 land; thence with his south line S 74° E 191 poles to  
 a stake near L. Carter's house, thence with the west  
 -tern alley of Zanesfield S 74° W 50 poles to a stake  
 on the north side of water street in Zanesfield it being