

75

11th Mo (Nov) 22nd 1827

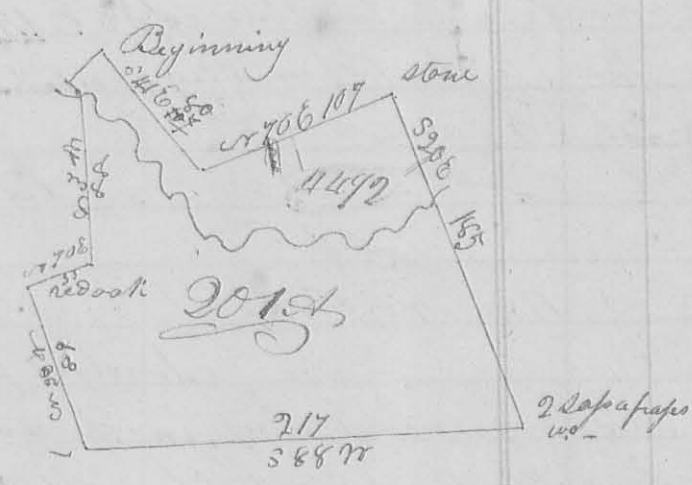
Survey No 14

8216

Surveyed for William Wells's land

Beginning at a stone in the south line of Thomas Stewart's land at the N.E. corner of Hampton Burges's land, thence S 41° E 80 poles to a stone in a swamp, southerly corner to said Stewart's land; thence with the easterly line thereof N 70° E 107 poles, crossing a road at 38 poles, to a stone northeast corner to McReals land; thence with the east line thereof S 20° E 180 poles (crossing a branch at 56 poles to 2 sapapapas and a white oak north easterly corner to Samuel Scott's land.

Thence with Scott's line S 88° W 207 poles to the north west corner of Scott's land in the west line of the original survey; thence with said line N 20° W 89 poles to a red oak corner corner to Burges's land; with a line thereof N 70° 33 poles to 2 small ashes thence N 3° W 8 poles to a small walnut on the north bank of a branch thence N 42° W 8 poles to a stone on the north bank of a branch thence N 28° E 20 poles to the beginning containing 201 acres part of Jesse Davis's survey N 44° 2 on Mackachae & Co. W. Miller inventor S. C.



12th mo (Dec) 4th 1827

John Woolman and others

Tram and established a line for east corner Beginning at the south east corner of Philip Slaughter's Survey No 3154 3 hickories all dead, thence S 41° E 107 poles crossing a road, and going up Darby's creek crossing it several times to a large ash, sugar and cypress stumps, of the original corner trees at the S.W. corner of said survey which a stone is now planted
 A. W. Vermorel

March 1837 ✓

N^o 369

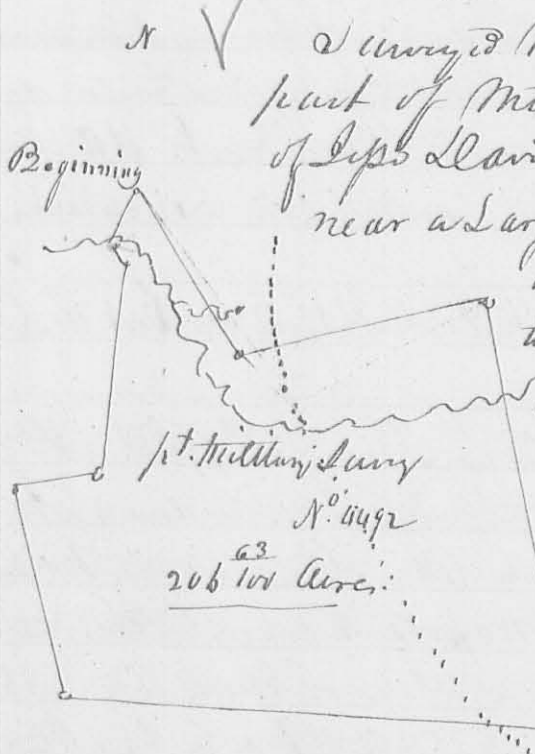
Surveyed for John Shelby 4 Acres Land as follows. Beginning at S.E. corner of said Shelby land, thence N 26° W 14 ch 83 Links to a stake in a prairie, thence S 66° W 3 chain to a stake, thence S 24° E 14 ch 12 Links to a stake in the South line of the said Shelby land, thence with said line N 80° E 3 ch 6 Links to the beginning.
Saml Hopkins Co. S. C.

N^o 370.

Surveyed for Amos Wilkins part of Military Survey N^o 4492 as follows. Beginning at a stone in David Krons Kopf South line, comes to Isaac Savage, thence S 73° E 32 poles to a stone in a state road, thence S 19° W 30 poles to a stone, thence N 73° W 32 poles to a stone, thence N 19° E 30 poles to the beginning containing Acres.
Saml Hopkins Co. S. C.

N^o 371

8716



Surveyed March 22. 1837 for John Booth part of Military Survey N^o 4492 in the name of Jess Lavin, as follows. Beginning at a stone near a large white oak in the West line of Louis Scaman, thence S 40° E 80 poles to a stone ending spring run at. — thence N 71° E 105 1/2 poles, ending a road at 38 poles to a stone, come to said Scaman, thence S 19° E 186 poles, crossing a branch at 44 to a stone, thence S 88° W 220 poles, ending road at 38 poles to a stone, 130 oak trees and two Hickories, thence N 19° W 89 poles to 2 Red oaks, thence N 71° E 34 poles to a stone, S 67° 50/9 Suits from two small oaks, thence N 88 poles to a white Walnut planter a stone, thence N 40° W 8 poles, thence N 25° E 20 poles, ending a branch to the beginning. Containing 206 1/2 acres.

J. Armstrong &
Err. Randle 3 ch. men.

Saml Hopkins Co. S. C.