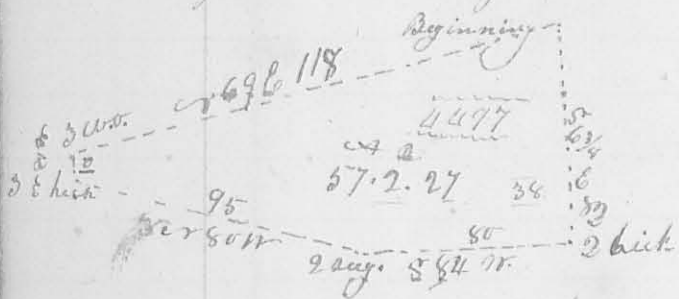


12th mo. Dec 11th 1824.

Survey No 38.

8184

Surveyed for John Colyar, beginning at a poplar, beech and ironwood in the south line of Samuel Harrison's land and
 N. corner of John Bishop's machine lot; thence S 63/4 E 82 poles
 to 2 hickories and back N.W. corner to said lot; thence S 84. 70 80 poles
 to 2 sugar trees and dogwood; thence N 80 95 poles to 3 small hickories
 thence N 21 11 10 poles to 2 white



oaks, hickory N.E. corner to
 Benjⁿ Wetthin's land and in the
 north line Thomas Parker's
 survey or 4497 thence with said
 line N 69 E 178 poles (crossing a

branch) to the beginning containing 57 acy 2 rods 4 27 poles
 part of Parker's said survey on the waters of Chad River

Robert McElmannon }
 Vincent Reames } C. C.

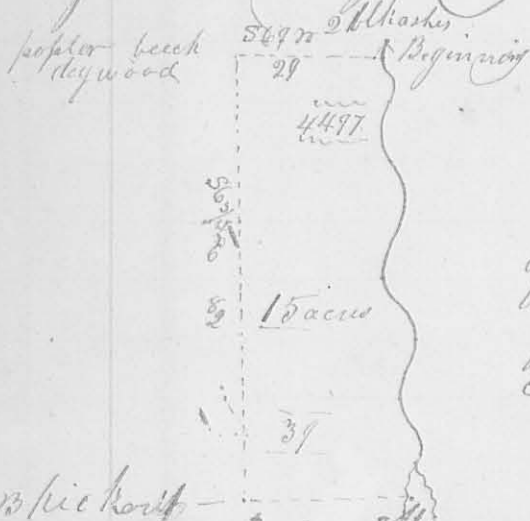
James McElmannon
 Surveyor S. C.

12th mo. Dec 11th 1824.

Survey No 39.

8187

Surveyed for John Colyar, beginning at 2 black oaks and
 mulberry on the west side of the machine branch where it
 crosses the south line of Samuel Harrison's land; thence
 with the said line S 69 N 29 poles to a poplar beech and
 dogwood; (the beginning corner of the preceding survey)



thence S 63/4 E 82 poles to 3 hickory and
 beech N.E. corner to said survey or 381
 thence N 70 1/2 E 31 poles to a white walnut
 and beech on a bank at the junction
 of 2 branches; thence with the meander
 of the machine branch to the beginning
 containing 65 acy part of Thomas
 Parker's survey or 4497

Robert McElmannon }
 Vincent Reames } C. C.

James McElmannon
 Surveyor

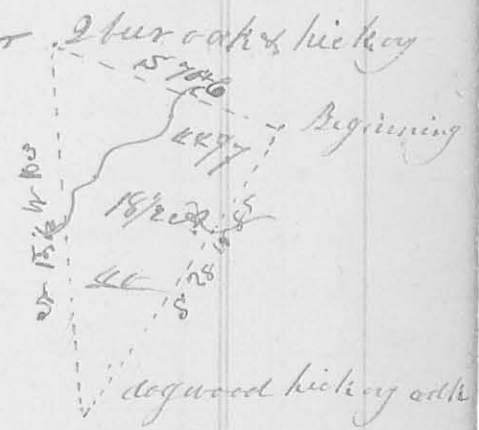
24

7th mo (Jan.) 1st 1825 V Survey n^o 40

24
8187

Surveyed 18 1/2 acres of land for Hampton Burgess; beginning at a stone, south west corner to Thomas Stewart's 50 acres of land, and in the thence S 25 W crossing a branch at 24 poles, 55 poles to a degraded hickory and red oak corner to Robert Smith's land; thence with the N. by line of Smith's land

crossing a black jack at 60 poles, 11 3/4 poles to a bur oak and hickory, corner to said Smith's land, these trees are dead, I marked 2 bur oaks & hickory thence S 70 1/2 E crossing a black jack at 40 poles, 71 poles to the beginning containing 18 1/2 acres part of Thomas Waddington's survey n^o 4477 on the waters of Mad River



George Elliotts jr. }
Daniel Purce } 66.

Ja. W. Harmon Surveyor J.C.

1st mo 3rd (Jan.) 1825 V Survey n^o 41

8185

Surveyed 10 1/2 acres of land for Joseph H. Garwood, beginning at 2 say as trees south west corner to a survey n^o 3163 patented in the name of Lucas Sullivant and c. c. corner to Robert Powers' survey n^o 3680 thence S 46 E (being 8th easterly variation from the original course called for) 126 1/2 poles to 3 young white oak, and buckeye on the bank of a branch, thence c. c. crossing a county road at 40 poles, 126 1/2 poles to a black walnut bur oak and buckeye; thence c. c. 46 W 126 1/2 poles to a sugar tree, young & clear in the line of William Withers' survey n^o 258 thence with said line S 52 W



passing the easterly corner of Daniel Stokes' land at 52 poles crossing the road at 60 poles, 126 1/2 to the beginning containing 10 1/2 acres part of survey n^o 3163

Joseph Stokes }
William Asher } 66

Ja. W. Harmon Surveyor J.C.