

20 links dist. both of these are dead, thence north $1\frac{1}{2}$ degree westerly variation from the original line, crossing a branch at 96 poles & one at 196 poles 306 poles to the beginning containing 629 acres

The first division line begins at a stone in the north line of the sec. (the trees are cut down which are called for in the original field notes) 160 poles from either corner; thence S $1\frac{1}{2}$ W (crossing a branch at 155 poles, one at 115 poles 158 poles set a stake for the center corner, a hickory 12 inches in diam. bore \approx 40 & 12 links dist. crossing a branch at 261 poles, 316 poles to a hickory 6 inches in diam \approx 38 $\frac{1}{2}$ 12 links dist. an elm 12 inches in diam S 10 $\frac{1}{2}$ 15 links dist. both of these are cut down, the original quadrangle corner, it being 162 poles from the S E corner of the sec.

The second line begins at a stake in a prairie in the west line of the sec. 158 poles from either corner; thence east $1\frac{1}{2}$ degree westerly variation 157 poles to the center corner; continued 80 poles further (crossing a gravel cause way at 66 poles) to a stake in a prairie; thence south crossing a swamp set a stake at 59 poles crossing a branch at 106 poles 158 poles to a stake in the south line of the sec. ~~Then continued the line.~~ See the Plat

John Gunn
John Shull

J. W. Marrison
Surveyor of Logan County

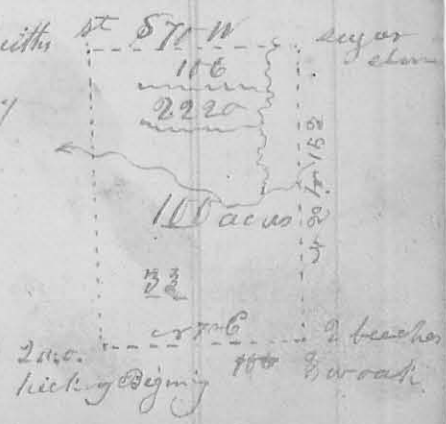
7th mo. (July) 7th 1824.

Survey No 33

8180

Surveyed 100 acres of land for Joseph Stokes, who presented a certificate from Noah J. Colloch, Auditor of Logan County, certifying that there was 100 acres of land sold to the said Joseph Stokes on the 5th day of Jan. 1824 for taxes interest & penalty, being an entire tract by \approx of entry 2220 in the name of Henry Delay

beginning at 2 white oaks and hickory one of the oaks is cut down, the south west corner of said survey, thence \approx 70° E 106 poles to 2 bushes & white oak (the oak is down), in the line of Augustine J. Smith's Survey \approx 3225 and original corner to said survey here we marked a red oak, thence \approx 20 N. with Smith said line, crossing Mackajack at 82 poles 152 poles to a sugar tree and elm in the line of Holland Hoany; survey \approx 3220 original to Delay's survey thence S 70° W. crossing a branch at 15 poles 106 poles to a stake in a prairie, thence



21
 Thence S 20° E, crossing Mackey's oak at 110 poles, 152 poles to the beginning containing one hundred acres

William Stokes } C.C.
 Charles Mott } C.C.

Ja. M. Harmon
 Surveyor of Logan Co

7th Mo (July) 8th 1824

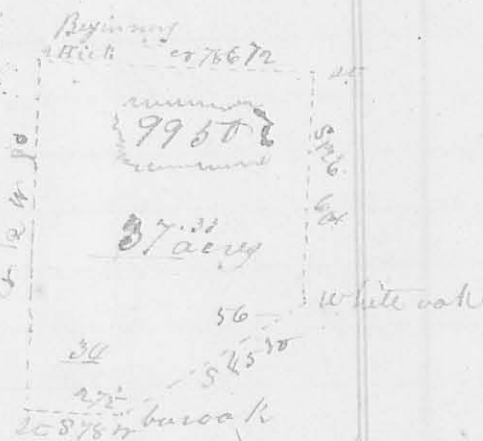
Survey No. 34

(8181)

Surveyed 37 acres of land for James Bouyer. Beginning at 2 hickories one of them is taken off, the e. w. corner to Michael Bouyer's survey to 99.50 on the Miami near Solomon's town e. r 78° 72 poles with the north line of said survey to the corner of stump's land; Thence S 12° E (crossing a prairie) 60 poles to a white oak on a ridge

Thence S 45° W. 56 poles to a stake & bur oak on said ridge Thence S 78° 75 27 1/2 poles to a stake in a prairie in the west line of Bouyer's said survey thence with said line e r 12° W 90 poles to the beginning containing thirty seven acres & thirty three poles

William Bouyer } C.C.
 John Stump } C.C.



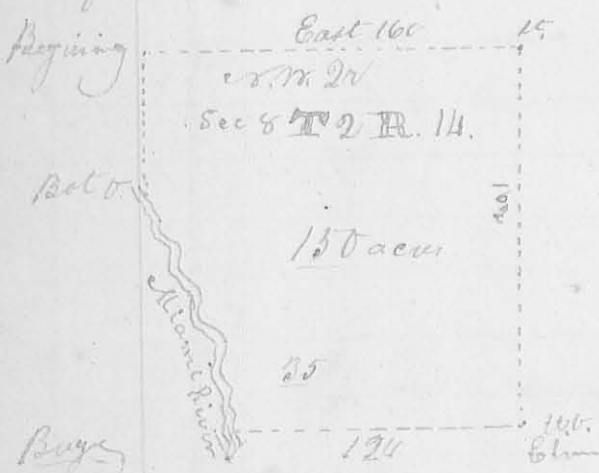
Ja. M. Harmon
 Surveyor L.C.

7th Mo 15th 1824

Survey No. 35

(8182)

Surveyed the e. w. qr of sec 8 in Town 2 Range 11 Co. M. K. for Jacob Keith; beginning at a stone in a field at the original corner of sec 8, 9, 14 & 15 Thence east 160 poles to a stake in a prairie



thence down said prairie south 162 poles to a white oak 17 inches in diam. S 72° E. 37 links dist. an elm 12 inch in diam e r 72 1/2 or 37 links dist. Thence west 124 poles to a small buckeye on the east bank of the Great Miami River & a hackberry stands near on each side of the buckeye thence up the River with

its meanders to a bot. oak corner tree standing on the bank of the River thence north 72 poles to the beginning containing 150 acres

William Douglas } C.C.
 James Moore } C.C.

Ja. M. Harmon
 Surveyor L.C.