

# Lee Surveying and Mapping Co.



Farm Surveys • Lot Surveys • Topography • Subdivisions • Construction Layout

855 EAST SANDUSKY AVENUE  
BELLEFONTAINE, OHIO 43311

(513) 593-5780

CLAYTON M. LEE, P.S.  
JEFFREY I. LEE, P.S.

## GODWIN, 189.963 ACRES

Lying in V.M.S. 4957, V.M.S. 8803, V.M.S. 9592, and V.M.S. 12099, Monroe Township, Logan County, Ohio.

Being that same land in the name of Velma Godwin as shown to be 187.47 acres as deeded and described in Volume 286, Page 337 and 338 of the Logan County Records of Deeds and being more particularly described as follows:

Beginning at a corner stone found on the center-line of County Highway 5 on the south line of V.M.S. 12099.

THENCE, with the said V.M.S. line, S 75°-43'-59" W, a distance of 1416.33 feet to a 5/8" iron rod set at the southeast corner of the H. Yoder 35.28 acre tract (Volume 194, Page 556).

THENCE, with the west line of V.M.S. 12099, N 31°-01'-40" E, a distance of 1017.47 feet to a 3/4" iron rod found on the center-line of Township Road 190.

THENCE, continuing with the said V.M.S. line, N 31°-20'-56" E, a distance of 643.50 feet to a 5/8" iron rod (set).

THENCE, continuing with the said V.M.S. line, N 31°-29'-38" E, a distance of 650.51 feet to a 5/8" iron rod set at the corner of V.M.S. 10853.

THENCE, with the east line of Summers' 24.1 acre tract (Volume 394, Page 335), N 23°-44'-53" W, a distance of 1283.93 feet to a 5/8" iron rod set on the north line of V.M.S. 8303.

THENCE, with the said V.M.S. line and the said line, extended into V.M.S. 4957, N 65°-43'-28" E, a distance of 1531.70 feet to a corner stone found at the G. Foulk northeast corner (Volume 393, Page 779).

THENCE, with Foulk's north line, N 23°-26'-29" W, a distance of 1301.25 feet to a 5/8" iron rod set at the southeast corner of the Layne Miller 20 acre tract (O.R. 47, Page 400).

THENCE, with the said Miller's east line and the east line of Charles Godwin's 4.054 acre tract (Volume 339, Page 157), N 65°-16'-09" E, a distance of 1189.32 feet to a 5/8" iron rod (set).

THENCE, with the south line of the following 3 properties: Fansler, O.R.78, Page 1; State of Ohio, Volume 191, Page 454; M. Sidesinger, Volume 359, Page 583, the following 9 bearings and distances:

- (1). S 29°-58'-44" E, 199.20 feet to a 5/8" iron rod (set).
- (2). S 53°-33'-30" E, 239.35 feet to a corner stone (found).
- (3). N 35°-05'-47" E, 125.93 feet to a 5/8" iron rod (set).
- (4). S 41°-16'-21" E, 383.68 feet to a 5/8" iron rod (set).
- (5). S 6°-10'-32" W, 146.96 feet to a 5/8" iron rod (set).
- (6). S 21°-11'-04" E, 45.57 feet to a 5/8" iron rod (set).
- (7). S 59°-05'-31" E, 322.25 feet to a 5/8" iron rod (set).
- (8). N 32°-06'-37" E, 83.00 feet to a 5/8" iron rod (set).
- (9). S 61°-09'-51" E, 810.70 feet to a railroad spike found on the center-line of County Road 5.

THENCE, with the said center-line, N 28°-46'-38" E, a distance of 210.34 feet to a railroad spike set on the south line of the said Sidesinger land.

THENCE, with said south line, the following 3 bearings and distances:  
S 41°-18'-35" E, a distance of 627.56 feet to a corner stone found on the north line of V.M.S. 9592.

S 84°-56'-03" E, 515.93 feet to a 5/8" iron rod (set).

S 29°-53'-32" E, 58.88 feet to a point on the center-line of Mad River.

THENCE, with the meanderings of said center-line, the following 6 bearings and distances:

- (1). S 35°-49'-27" W, 126.94 feet.
- (2). S 74°-05'-58" W, 266.99 feet.
- (3). S 48°-27'-11" W, 134.58 feet.
- (4). S 83°-37'-46" W, 154.68 feet.
- (5). S 44°-22'-36" W, 95.28 feet.
- (6). S 62°-54'-23" W, 731.44 feet to the old center-line of County Highway

INDEXED ON MAP  
7913 1D-1

# Lee Surveying and Mapping Co.



Farm Surveys • Lot Surveys • Topography • Subdivisions • Construction Layout

855 EAST SANDUSKY AVENUE  
BELLEFONTAINE, OHIO 43311

(513) 593-5780

CLAYTON M. LEE, P.S.  
JEFFREY I. LEE, P.S.

PAGE 2.

GODWIN, 189.963 acres (con't.)

THENCE, with the said old center-line, N 13°-42'-08" W, a distance of 304.14 feet to a 5/8" iron rod (found), passing through a railroad spike set at 27.84 feet.

THENCE, N 23°-49'-24" W, a distance of 16.00 feet to a 5/8" iron rod set on the west line of V.M.S. 9592.

THENCE, with the said west line of V.M.S. 9592, which is also the east right-of-way line of County Highway 5, S 65°-08'-19" W, a distance of 1034.20 feet to a 5/8" iron rod (set).

THENCE, continuing with the east right-of-way line of County Highway 5, S 45°-45' W, a distance of 957.00 feet to a 5/8" iron rod set on the north line of V.M.S. 12099.

THENCE, with the said V.M.S. north line, N 82°-33'-27" W, a distance of 38.32 feet to a railroad spike set on the center-line of County Highway 25.

THENCE, with said center-line, the following 5 bearings and distances:  
S 45°-45' W, a distance of 535.67 feet to a 3/4" iron rod found.  
S 38°-15'-33" W, a distance of 685.87 feet to a 3/4" iron rod found.  
S 27°-10'-55" W, a distance of 99.92 feet to a 3/4" iron rod found.  
S 16°-45'-25" W, a distance of 529.06 feet to a 3/4" iron rod found.  
S 07°-12'-51" E, A distance of 590.54 feet to the point of beginning, passing a railroad spike set on the center-line of Township Road 190 at 15.03 feet.

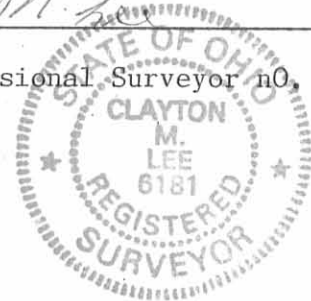
Containing 189.963 acres, of which 105.219 acres are in V.M.S. 4957; 28.794 acres are in V.M.S. 8303; 14.752 acres are in V.M.S. 9592, and 41.198 acres are in V.M.S. 12099.

This description prepared from an actual field survey.

Basis for bearings: Center-line of County Highway 5 = S 45°-45' W,

Prepared by:

Clayton M. Lee  
Registered Professional Surveyor no. 6181  
August 17, 1989



ORIGINAL STAMP IN GREEN

L-1748-1

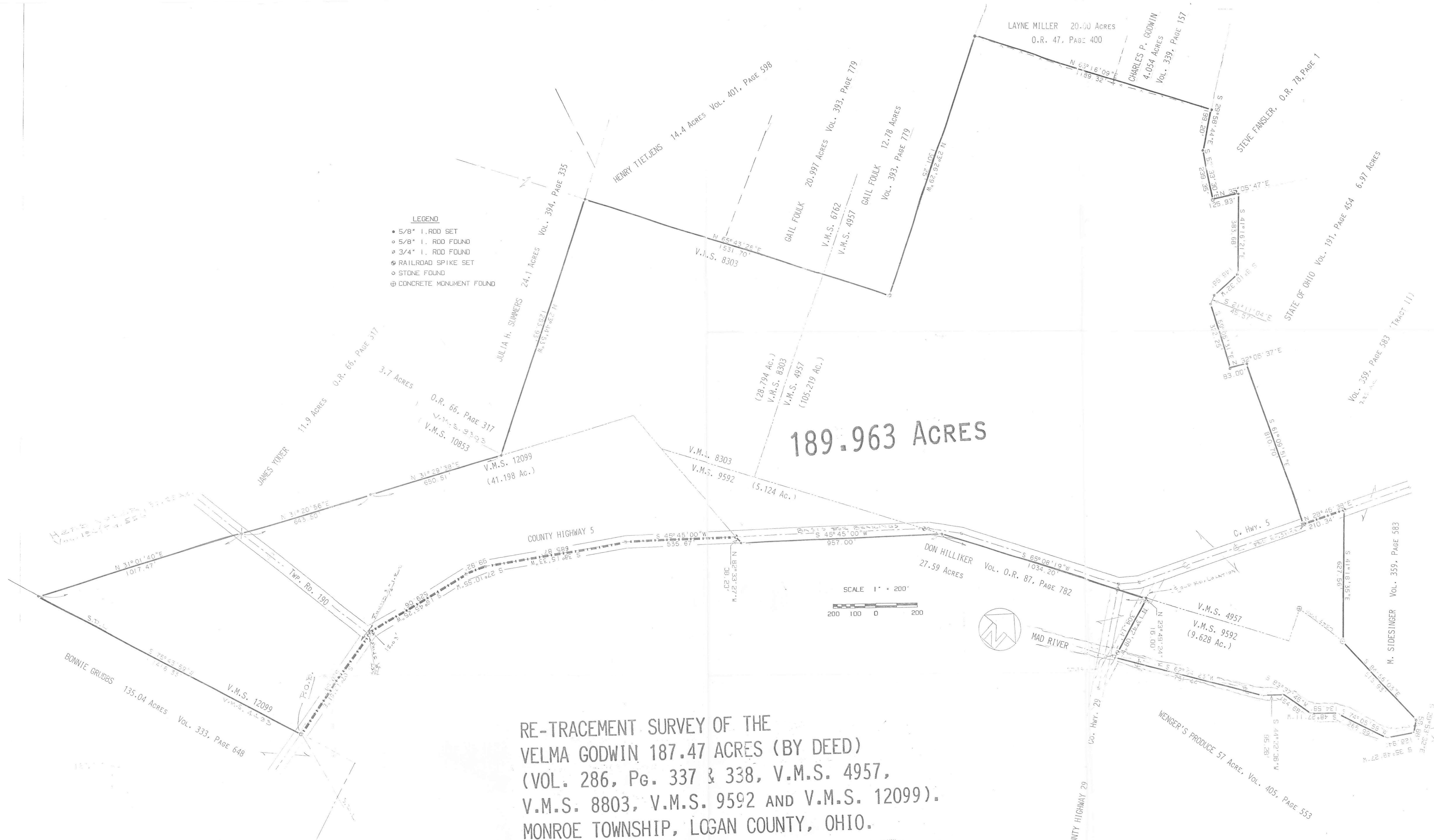
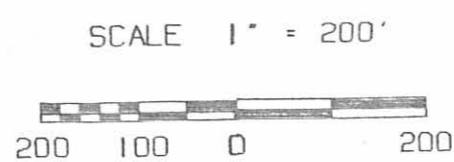
INDEXED ON MAP  
79/3 ID-2

- LEGEND**
- 5/8" I. ROD SET
  - 5/8" I. ROD FOUND
  - ◐ 3/4" I. ROD FOUND
  - ⊙ RAILROAD SPIKE SET
  - STONE FOUND
  - ⊕ CONCRETE MONUMENT FOUND

**189.963 ACRES**

**RE-TRACEMENT SURVEY OF THE  
VELMA GODWIN 187.47 ACRES (BY DEED)  
(VOL. 286, Pg. 337 & 338, V.M.S. 4957,  
V.M.S. 8803, V.M.S. 9592 AND V.M.S. 12099).  
MONROE TOWNSHIP, LOGAN COUNTY, OHIO.**

By: *Jeffrey V. Lee*  
JEFFREY V. LEE, P.S. 6359  
AUGUST, 1989



INDEXED ON MAP  
7913 1P

L-1749-1