

Received 7-25-88 OKG

**LESLIE H. GEESLIN**  
REGISTERED SURVEYOR NO. 5248  
P. O. BOX 274  
RUSHSVLVANIA, OHIO 43347  
TELEPHONE: (513) 468-2793



*Leslie H. Geeslin*

GREY SURVEY

July, 1988

The following described real estate situated in the State of Ohio, Counties of Champaign and Logan, Townships of Salem and Monroe, being part of Sections 14 and 15, Town 5, Range 13, M.R.S. and more particularly described as follows:

Commencing at a stone at the northwest corner of Richard Kimball's 20.00 acre tract as described in the Logan County Recorder's Office in D.B. Vol. 384 Page 443, said stone being N. 5° 01' 31" E. 988.82 feet from the north line of Champaign County.

Thence with said Kimball's west line S. 5° 01' 31" W. 16.50 feet to a 0.625 inch iron bar for the place of beginning for this description.

Thence with said Kimball's west line and the west line of said Kimball's 18.54 acre tract (3.57 acres in Logan County and 14.97 acres in Champaign County) S. 5° 01' 31" W. 1243.62 feet to a 0.625 inch iron bar, passing the county line at 972.32 feet. Kimball's 18.54 acre tract is recorded in Logan County D.B. Vol. 396 Page 748 and in Champaign County D.B. Vol 238 Page 1054.

Thence N. 83° 59' 56" W. 777.93 feet to a 0.625 inch iron bar.

Thence N. 5° 09' 39" E. 837.20 feet to a 0.625 inch iron bar, passing the county line at 254.30 feet.

Thence S. 89° 48' 26" E. 303.12 feet to a 0.625 inch iron bar.

Thence N. 4° 48' 24" E. 366.46 feet to a 0.625 inch iron bar.

Thence S. 85° 07' E. (this bearing is assumed and all other bearings are from angles and distances measured in this field survey) parallel with and 16.5 feet south of Carl Grey's North line 475.18 feet to the place of beginning.

Containing 19.412 acres more or less of which 14.722 acres are in Section 15, Monroe Township, Logan County and 4.69 acres are in Section 14, Salem Township, Champaign County.

Reference is hereby made to a plat of this survey on file with the Champaign and Logan County Engineers

INDEXED ON MAP  
7808 1D

PAULA A. WAMMES AND SHELLEY J. WAMMES  
 75.00 AC. (D.B. VOL. 403 PAGE 910)  
 N. 4° 54' 06" E. 16.50'  
 16.50' LANE (0.359 ACRE)

CARL GREY  
 38.09 AC.  
 D.B. VOL. 391  
 PAGE 222-224  
 LOGAN COUNTY

SURVEY OF A 19.412 ACRE TRACT AND  
 A 0.359 ACRE LANE IN LOGAN AND CHAMPAIGN  
 COUNTYS; MONROE AND SALEM  
 TOWNSHIPS; SEC. 15, T. 5, R. 13 M. R. S.  
 AND SEC. 14, T. 5, R. 13 M. R. S. FOR  
 CARL GREY. JULY, 1988

1.418 AC.  
 D.B. VOL. 403  
 PAGE 837  
 DON HAMILTON

RICHARD KIMBALL  
 20.00 ACRES  
 D.B. VOL. 384 PAGE 443  
 LOGAN COUNTY

RICHARD KIMBALL  
 3.57 AC  
 D.B. VOL. 396 PL. 748  
 LOGAN COUNTY - MONROE TWP  
 CHAMPAIGN COUNTY - SALEM TWP  
 SEC. 15, T. 5, R. 13 M. R. S.  
 SEC. 14, T. 5, R. 13 M. R. S.

RICHARD KIMBALL  
 14.97 AC.  
 D.B. VOL. 288 PAGE 1054  
 CHAMPAIGN COUNTY

LEGEND:  
 □ = CO. LINE MON.  
 ⊙ = RIR SPIKE FO.  
 ● = RIR SPIKE SET  
 △ = STONE FO. (CHISED CROSS IN TOP)  
 ○ = 5/8" BAR FO.  
 ■ = 5/8" BAR SET  
 SCALE: 1" = 200'



*Leslie H. Geeslin*  
 LESLIE H. GEESLIN  
 RUSHVILLE, OHIO

19.412 ACRES  
 (14.722 ACRES)  
 582.90  
 N. 5° 09' 39" E 837.20  
 254.30  
 N. 83° 59' 56" W. 777.93  
 303.12  
 S. 89° 48' 26" E  
 16.50'  
 N. 4° 48' 24" E  
 366.46  
 37.99  
 475.18  
 S. 85° 07' E  
 N. 85° 07' W 31.76'  
 972.32  
 S. 5° 01' 31" W  
 1243.62  
 271.30

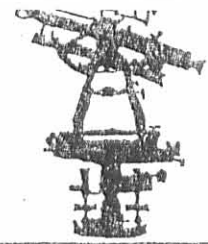
CARL GREY  
 D.B. VOL. 217, PAGE 777  
 CHAMPAIGN COUNTY

INDEXED ON MAP  
 7808



REC'D 9-11-12  
SMY OK

**EDWARDS SURVEYING**  
110 SOUTH MAIN STREET  
URBANA, OHIO 43078  
(937) 653-6508



**LEGAL DESCRIPTION FOR MESCHER'S 34.556 ACRE TRACT**

Being situate in the State of Ohio, Fractional Section 15, Town 5, Range 13, B.T.M.R.S. in Monroe Township of Logan County and Fractional Section 14, Town 5, Range 13, B.T.M.R.S. in Salem Township, Champaign County, and being more particularly described as follows:

Beginning for reference at a Mag nail found at the intersection of the centerlines of Township Road 175 (40' right-of-way) and State Route 245 (60' right-of-way);

thence with the centerline of State Route 245 S-13°43'34"-E, 291.24' (feet) to a Mag nail set at the **PRINCIPLE PLACE OF BEGINNING** for the tract hereinafter described, said Mag nail set being at the Southeast corner of a 74.64 acre tract conveyed to Wammes Storage & Rentals, LTD, by Deed recorded in Official Record 789, Page 272, Tract XVI, of the Logan County Records;

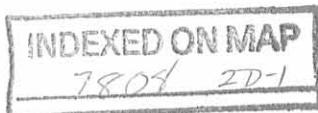
thence continuing with the centerline of State Route 245 S-13°43'34"-E, 17.49' (feet) to a railroad spike found at the Northeast corner of a 1.418 acre tract conveyed to Donald Hamilton by Deed recorded in Official Record 315, Page 216 of the Logan County Records;

thence with the North line of said Hamilton's tract and with the North line of a 20.00 acre tract conveyed to Richard Y. Kimball by Deed recorded in Official Record 522, Page 530, of the Logan County Records, N-84°19'40"-W, 919.38' (feet) to a 0.45' (foot) square stone monument found, passing for reference the right-of-way line of State Route 245 at 31.81' (feet), a 5/8" diameter iron bar found at 32.19' (feet), and a 5/8" diameter iron bar found at the Northwest corner of said Hamilton's 1.418 acre tract at 198.68' (feet);

thence with the West line of said Kimball's 20.00 acre tract, S-5°45'00"-W, 16.50' (feet) to a 5/8" diameter iron bar found at the Northeast corner of a 19.412 acre tract conveyed to Julia B. Yoder, Trustee, by Deed recorded in Official Record 920, Page 761, Tract 5, of the Logan County Records and in Official Record 473, Page 739, of the Champaign County Records;

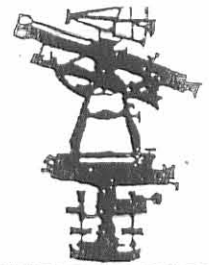
thence with the bounds of said Yoder's 19.412 acre tract the following five(5) courses:

1. N-84°19'40"-W, 475.48' (feet) to a 5/8" diameter iron bar found;
2. S-5°28'17"-W, 366.68' (feet) to a 5/8" diameter iron bar found;
3. N-89°06'37"-W, 303.31' (feet) to a 5/8" diameter iron bar found;
4. S-5°52'24"-W, 837.54' (feet) to a 5/8" diameter iron bar found, passing for reference an iron bar set on the South line of Fractional Section 15 in Monroe Township, Logan County, also being the North line of Fractional Section 14 in Salem Township, Champaign County, at 587.28' (feet);
5. S-83°18'25"-E, 777.83' (feet) to a 5/8" diameter iron bar found on the West line of a 9.68 acre tract conveyed to Christa L. Shoemaker by Deed recorded in Official Record 492, Page 1463, of the Champaign County Records;





**EDWARDS SURVEYING**  
 110 SOUTH MAIN STREET  
 URBANA, OHIO 43078  
 (937) 653-6508



thence with the West line of said Shoemaker's tract S-5°45'00"-W, 580.53' (feet) to an iron bar set on the North line of a 15.000 acre tract conveyed to Gerald A. Lapp by Deed recorded in Official Record 286, Page 299, of the Champaign County Records;

thence with the North line of said Lapp's tract N-84°24'44"-W, 1268.73' (feet) to an iron bar set at the Southeast corner of a 190.86 acre tract conveyed to Hazel G. Barger, Trust, by Deed recorded in Official Record 190, Page 173, of the Logan County Records and in Official Record 113, Page 1, of the Champaign County Records;

thence with the East line of said 190.86 acre tract, N-5°46'27"-E, 1842.27' (feet) to an iron bar set on the South line of a 62.78 acre tract conveyed to Marvin K. Barger, Trust, by Deed recorded in Official Record 190, Page 171, of the Logan County Records, passing for reference an iron bar set on the North line of Fractional Section 14 in Salem Township, Champaign County, also being the South line of Fractional Section 15 in Monroe Township, Logan County, at 843.76' (feet);

thence with the South line of said Barger's 62.78 acre tract, and with the South line of aforementioned Wammes Storage & Rentals' 74.64 acre tract, S-84°19'40"-E, 1236.19' (feet) to an iron bar set;

thence continuing with the bounds of said Wammes Storage & Rentals' 74.64 acre tract the following two (2) courses:

1. N-5°46'45"-E, 16.50' (feet) to a 5/8" diameter iron bar found;
2. S-84°19'40"-E, 945.30' (feet) to the place of beginning, passing for reference an iron bar set on the right-of-way line of State Route 245 at 913.49' (feet).

Containing 34.556 acres, 14.537 acres of which is a part of Fractional Section 15 in Monroe Township of Logan County and 20.019 acres of which is a part of Fractional Section 14 in Salem Township of Champaign County, 0.012 acre of which is within the road right-of-way, but being subject to all legal highway and easements of record.

Being all of an 18.678 acre tract, (original 38.09 acre tract) conveyed to Nick & Sally Jo Mescher by Deed recorded in Official Record 72, Page 869, of the Logan County Records and Official Record 28, Page 281, of the Champaign County Records, Tract 1, all of a 15.3 acre tract also conveyed to Nick & Sally Jo Mescher by Deed recorded in Official Record 72, Page 869, of the Logan County Records and Official Record 28, Page 281, of the Champaign County Records, Tract 2, and all of a 0.36 acre tract also conveyed to Nick & Sally Jo Mescher by Deed recorded in Official Record 72, Page 869, of the Logan County Records and Official Record 28, Page 281, of the Champaign County Records, Tract 3.

The foregoing description prepared by and in accordance with a Survey by William D. Edwards, Professional Surveyor No. 7574, August 29, 2012. All iron bars set are 5/8"x30" iron re-bar with a yellow plastic cap stamped "EDWARDS PS 4792 PS 7574". Bearings for the herein described tract are based on Ohio State Plane Coordinates NAD 1983, North Zone, resulting in a bearing for the centerline of State Route 245 of S-13°43'34"-E.



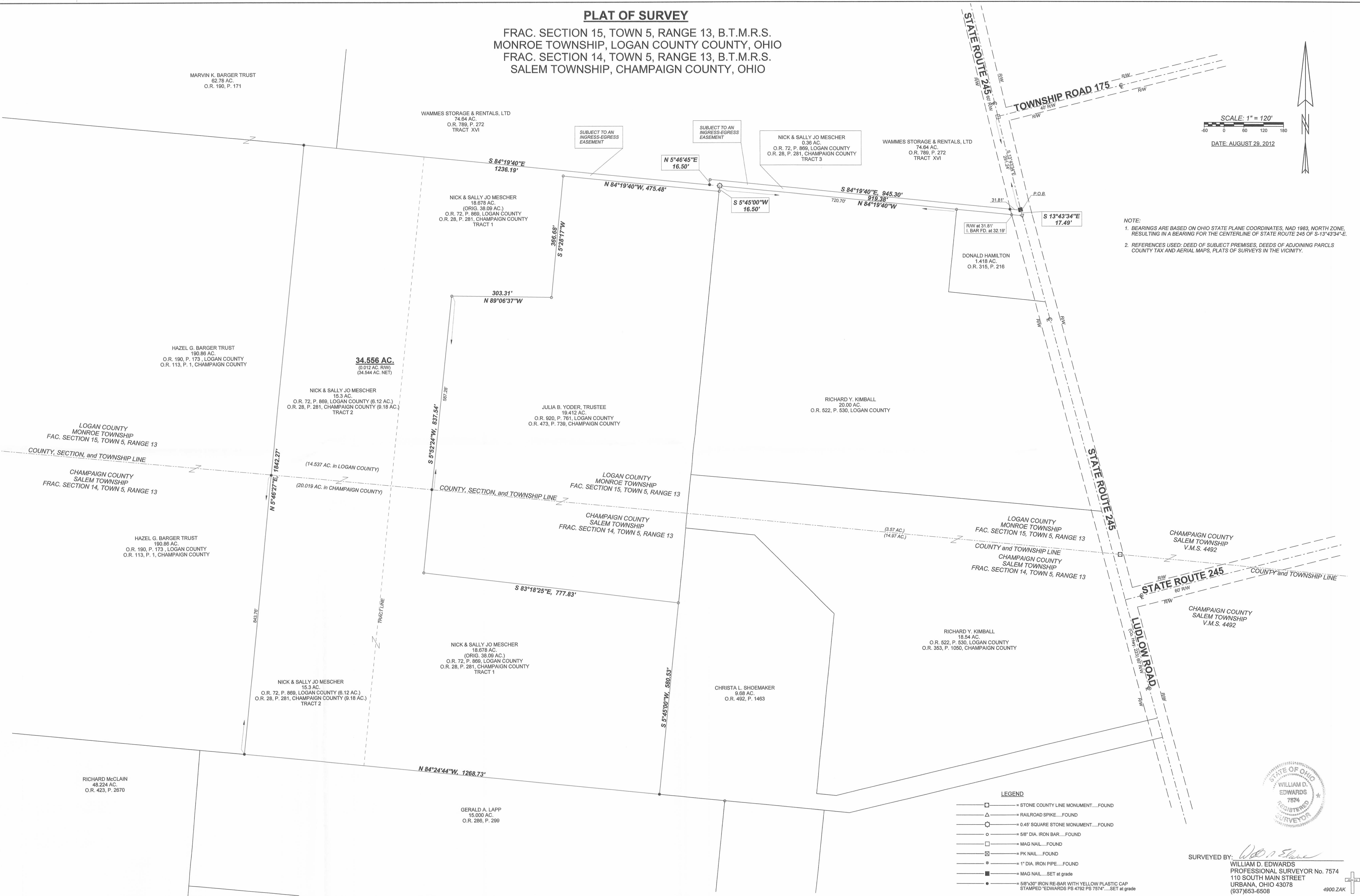
William D. Edwards  
 Professional Surveyor No. 7574

INDEXED ON MAP  
 7809 20-2

REV'D 9-11-12 smj/ok

### PLAT OF SURVEY

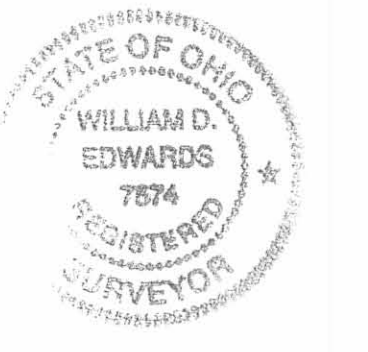
FRAC. SECTION 15, TOWN 5, RANGE 13, B.T.M.R.S.  
MONROE TOWNSHIP, LOGAN COUNTY, OHIO  
FRAC. SECTION 14, TOWN 5, RANGE 13, B.T.M.R.S.  
SALEM TOWNSHIP, CHAMPAIGN COUNTY, OHIO



SCALE: 1" = 120'  
DATE: AUGUST 29, 2012

NOTE:  
1. BEARINGS ARE BASED ON OHIO STATE PLANE COORDINATES, NAD 1983, NORTH ZONE, RESULTING IN A BEARING FOR THE CENTERLINE OF STATE ROUTE 245 OF S-13°43'34"-E.  
2. REFERENCES USED: DEED OF SUBJECT PREMISES, DEEDS OF ADJOINING PARCELS COUNTY TAX AND AERIAL MAPS, PLATS OF SURVEYS IN THE VICINITY.

- LEGEND**
- = STONE COUNTY LINE MONUMENT.....FOUND
  - △— = RAILROAD SPIKE.....FOUND
  - = 0.45" SQUARE STONE MONUMENT.....FOUND
  - = 5/8" DIA. IRON BAR.....FOUND
  - = MAG NAIL.....FOUND
  - ⊗— = PK NAIL.....FOUND
  - = 1" DIA. IRON PIPE.....FOUND
  - = MAG NAIL.....SET at grade
  - = 5/8"x30" IRON RE-BAR WITH YELLOW PLASTIC CAP STAMPED "EDWARDS PS 4792 PS 7574".....SET at grade



SURVEYED BY: *William D. Edwards*  
WILLIAM D. EDWARDS  
PROFESSIONAL SURVEYOR No. 7574  
110 SOUTH MAIN STREET  
URBANA, OHIO 43078  
(937)653-6508

INDEXED ON MAP  
7803 2P

4900.ZAK