

Lee Surveying and Mapping Co., Inc.

Land Surveys • Topography • Subdivisions • Construction Layout

117 N. Madriver St.
Bellefontaine OH 43311



Phone: (937) 593-7335
Fax: (937) 593-7444

LOCKWOOD 2.000 ACRES

Lying in Virginia Military Surveys 9592, 9618, and 10075, Monroe Township, Logan County, Ohio.

Being out of the Lloyd Lockwood and Margaret Lockwood original 44.692 acre tract as deeded and described in Official Record 50, Page 365 of the Logan County Records of deeds and being more particularly described as follows:

Beginning at a 1/2 inch iron rod found at Station 35 + 00 in the Logan County Engineer's Field Book 602, Page 72.

THENCE, with the center-line of County Highway 29 (60 feet wide), S 76°-52'-25"E, a distance of 391.95 feet to a railroad spike found at the TRUE POINT OF BEGINNING.

THENCE, with the east line of the Dale Barns 2.546 acre tract (O.R. 140, Pg. 547), N 6°-59'-30"E, a distance of 380.20 feet to a 5/8 inch iron rod found, passing a 1/2 inch iron found at 30.17 feet.

THENCE, S 65°43'-35"E, a distance of 256.85 feet to a 5/8 inch iron rod set.

THENCE, S 6°-59'-30"W, a distance of 330.26 feet to a MAG nail set, passing a 5/8 inch iron rod set at 300.12 feet.

THENCE, with the center-line of County Highway 29, N 76°-52'-25"W, a distance of 246.66 feet to the point of beginning.

Containing 2.000 acres, of which 0.170 acre is within the highway right-of-way.

The basis for bearings is the center-line of County Highway 29, being N 76°-52'-25"W, and all other bearings are from angles and distances measured in a field survey by Lee Surveying and Mapping Co., Inc., on July 8, 2003.

Description prepared by:



Jeffrey I. Lee
Jeffrey I. Lee
Professional Surveyor 6359

July 17, 2003

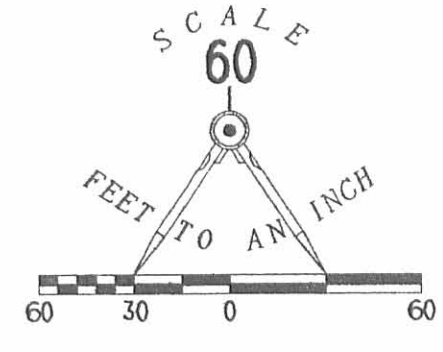


L-1615

ORIGINAL STAMP IN GREEN

**SURVEY OF
2.000 ACRES OUT OF THE
LLOYD LOCKWOOD AND MARGARET LOCKWOOD
ORIGINAL 44.692 ACRE TRACT
OFFICIAL RECORD 50, PAGE 365
VIRGINIA MILITARY SURVEYS 9592, 9618, AND 10075
MONROE TOWNSHIP
LOGAN COUNTY, OHIO**

LLOYD LOCKWOOD
AND MARGARET LOCKWOOD
ORIGINAL 44.692 ACRE TRACT
O.R. 50, PG. 365



LEGEND

- 1/2 INCH IRON ROD FOUND
- ⊗ RAILROAD SPIKE FOUND
- 5/8 INCH IRON ROD FOUND
- 5/8 INCH IRON ROD SET
- ◎ MAG NAIL SET

DALE BARNS
2.546 ACRE TRACT
O.R. 140, PG. 547

2.000 ACRES
OF WHICH 0.170 ACRE IS WITHIN THE
HIGHWAY RIGHT-OF-WAY



ORIGINAL STAMP IN GREEN

SURVEYED BY:

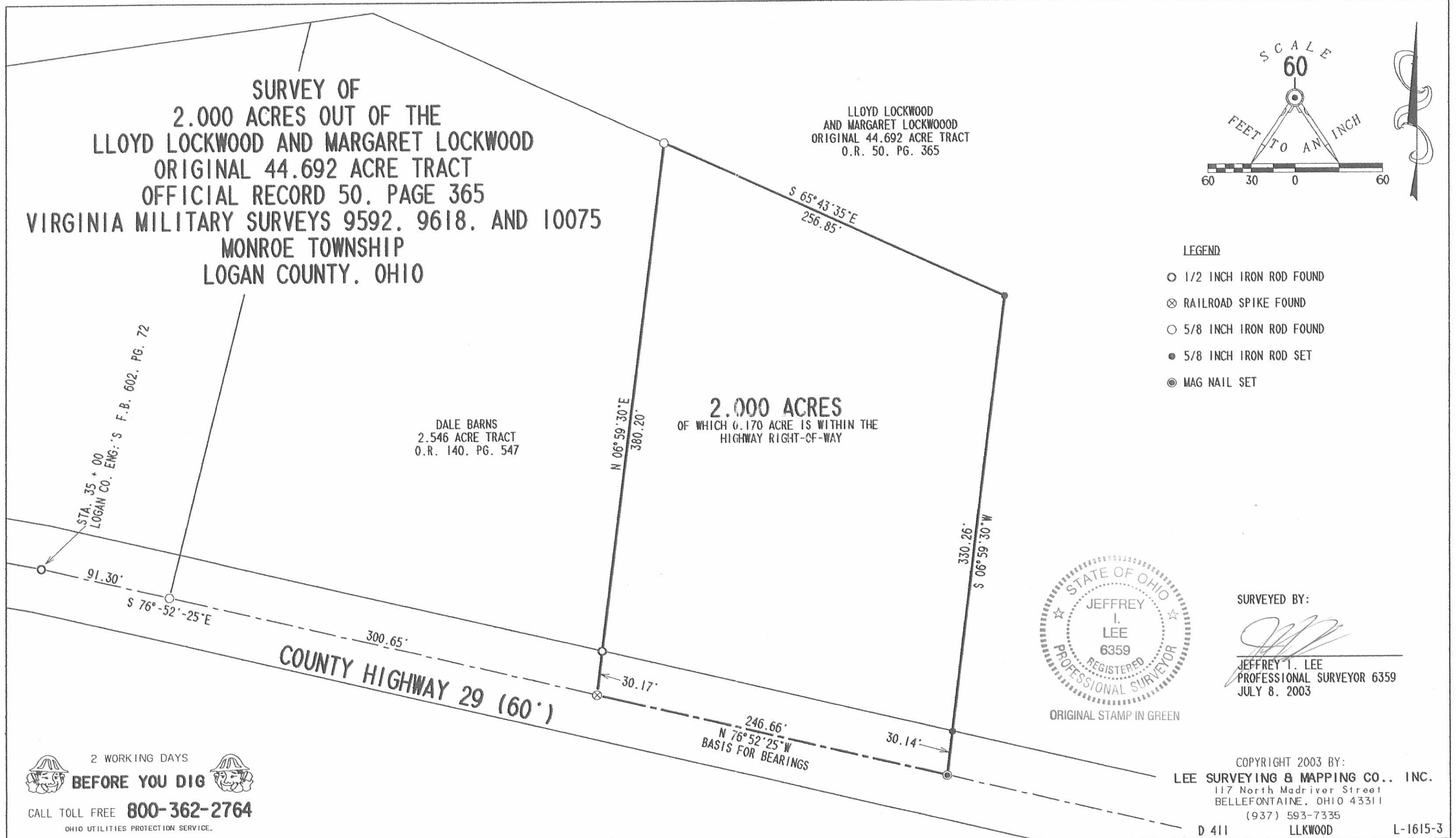
Jeffrey I. Lee
JEFFREY I. LEE
PROFESSIONAL SURVEYOR 6359
JULY 8, 2003

COPYRIGHT 2003 BY:
LEE SURVEYING & MAPPING CO., INC.
117 North Madriver Street
BELLEFONTAINE, OHIO 43311
(937) 593-7335

D 411 LLLKWOOD L-1615-3

INDEXED ON MAP
7676 1P

2 WORKING DAYS
BEFORE YOU DIG
CALL TOLL FREE **800-362-2764**
OHIO UTILITIES PROTECTION SERVICE.





Lee Surveying and Mapping Co.



Farm Surveys • Lot Surveys • Topography • Subdivisions • Construction Layout

143 EAST COLUMBUS AVENUE
BELLEFONTAINE, OHIO 43311

(513) 593-7335

JEFFREY I. LEE, P.S.

KENNETH RAY FURLONG SURVEY (2.546 ACRES)

Lying in V.M.S. 9592, 9618, 10075, Monroe Township, Logan County, Ohio.

Being out of the Kenneth Ray Furlong 6.678 acres as deeded and described in Official Record 63, Page 994 of the Logan County Records of Deeds and being more particularly described as follows:

Beginning at a railroad spike set on the center-line of County Road 29, said spike being S 76°-52'-25" E, a distance of 91.30 feet from a 3/4" iron rod found at station 35+00 as recorded in the Logan County Engineer's Field Book 602, Page 72.

THENCE, N 13°-54'-37" E, a distance of 404.97 feet to a 3/4" iron rod set in the south line of the Lloyd Lockwood 44.692 acres (O.R. 50, Page 365), passing through a 3/4" iron rod set at a distance of 30.00 feet.

THENCE, with said Lockwood south line the following two courses:
N 82°-12'-00" E, a distance of 42.92 feet to a 1/2" iron rod found.
S 65°-43'-35" E, a distance of 218.51 feet to a 1/2" iron rod found.

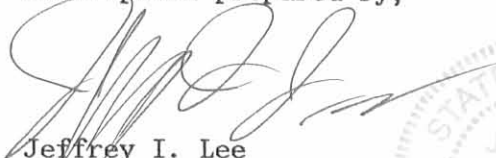
THENCE, with a west line of the said 44.692 acres, S 6°-59'-30" W, a distance of 380.20 feet to a railroad spike found in the center-line of County Road 29, passing a 1/2" iron rod found at 350.03 feet.

THENCE, with the center-line of County Road 29, N 76°-52'-25" W, a distance of 300.65 feet to the place of beginning.

Containing 2.546 acres of which 0.206 acre is within the right of way of County Road 29.

The basis for bearings is based upon the center-line of County Road 29 being N 76°-52'-25" W, and all other bearings are from angles and distances measured in a field survey by Lee Surveying and Mapping Company on August 28, 1991.

Description prepared by,


Jeffrey I. Lee
Professional Surveyor No. 6359
August 28, 1991



ORIGINAL STAMP IN GREEN

INDEXED ON MAP
7676 2D

LLOYD LOCKWOOD
 44.692 ACRES
 O.R. 50, Pg 365

KENNETH RAY FURLONG
 6.678 ACRE (ORIGINAL)
 4.132 ACRES REMAINS
 O.R. 63, Pg 994

2.546 ACRES
 (0.206 AC. IN RIGHT
 OF WAY)

SURVEY OF 2.546 ACRES OUT OF
 THE KENNETH RAY FURLONG
 6.678 ACRES (O.R. 63, PG. 994
 V.M.S. 9592, 9618, 10075,
 MONROE TWP., LOGAN COUNTY, OHIO

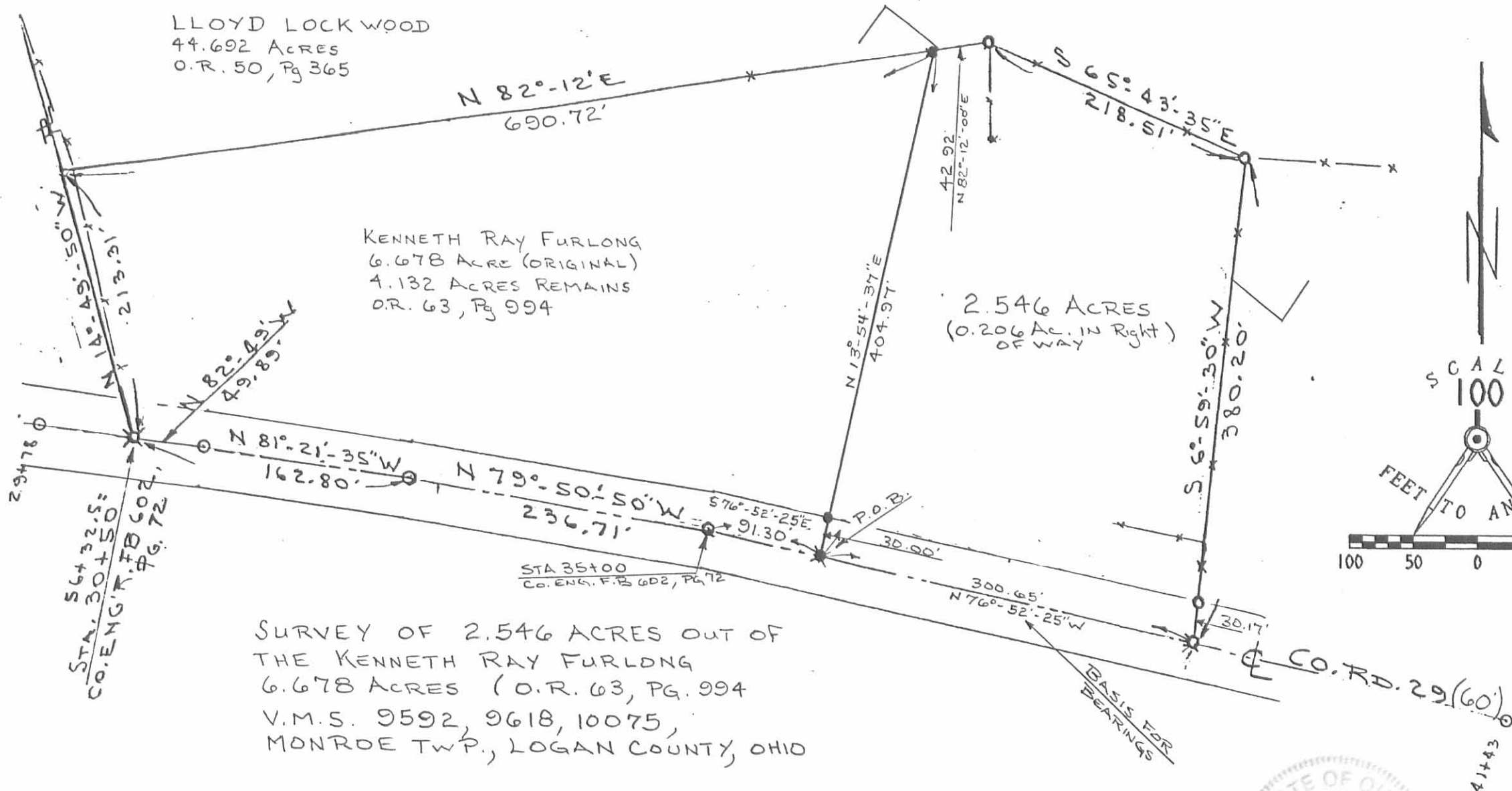
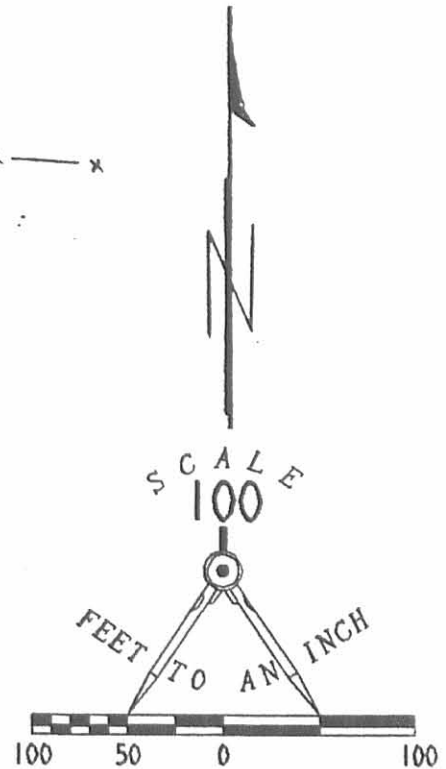
- = 3/4" IRON ROD FOUND
- = 1/2" " "
- ✕ = RR SPIKE
- ✕ = RR SPIKE SET
- = 3/4" IRON ROD SET

By: *Jeffrey I. Lee*
 JEFFREY I. LEE
 REG. SURVEYOR 6359
 AUG. 28, 1991



ORIGINAL STAMP IN GREEN

INDEXED ON MAP
 7676 2P



Lee Surveying and Mapping Co.



Farm Surveys • Lot Surveys • Topography • Subdivisions • Construction Layout

855 EAST SANDUSKY AVENUE
BELLEFONTAINE, OHIO 43311

(513) 593-5780

CLAYTON M. LEE, P.S.
JEFFREY I. LEE, P.S.

LOCKWOOD 6.678 ACRES

Lying in V.M.S. 9592-9618-10075, Monroe Township, Logan County, Ohio.

Being out of that 51.37 acres (Original 65 acres) as deeded and described in Volume 163, Page 560 of the Logan County Records of Deeds and being more particularly described as follows:

Beginning at a railroad spike set on the center-line of County Road 29, marking the southwest corner of grantor's said 51.37 acres and designated as being Station 30+50 in the Logan County Survey Records (Field Book 602, Page 72).

THENCE, with the property line between grantor and Wengers Produce (Volume 405, Page 553), N 14°-49'-50" W, a distance of 213.31 feet to a 1/2" iron rod (Set).

THENCE, N 82°-12' E, a distance of 733.64 feet to a 1/2" iron rod (Set).

THENCE, S 65°-43'-35" E, a distance of 218.51 feet to a 1/2" iron rod (Set).

THENCE, S 6°-59'-30" W, a distance of 380.20 feet to a railroad spike set on the center-line of County Road 29.

THENCE, with said center-line, the following 4 bearings and distances:

N 76°-52'-25" W, 391.95 feet to a 3/4" iron rod.

N 79°-50'-50" W, 236.71 feet to a 3/4" iron rod.

N 81°-21'-35" W, 162.80 feet to a 3/4" iron rod.

N 82°-49' W, 49.89 feet to the point of beginning.

Containing 6.678 acres.

This description prepared from an actual field survey.

Basis for bearings: Center-line of County Road 29 (N 82°-49' W).

See County Engineer's Field Book 602, Page 72.

Prepared by:

Clayton M. Lee

Registered Professional Surveyor No. 6181

September 8, 1987



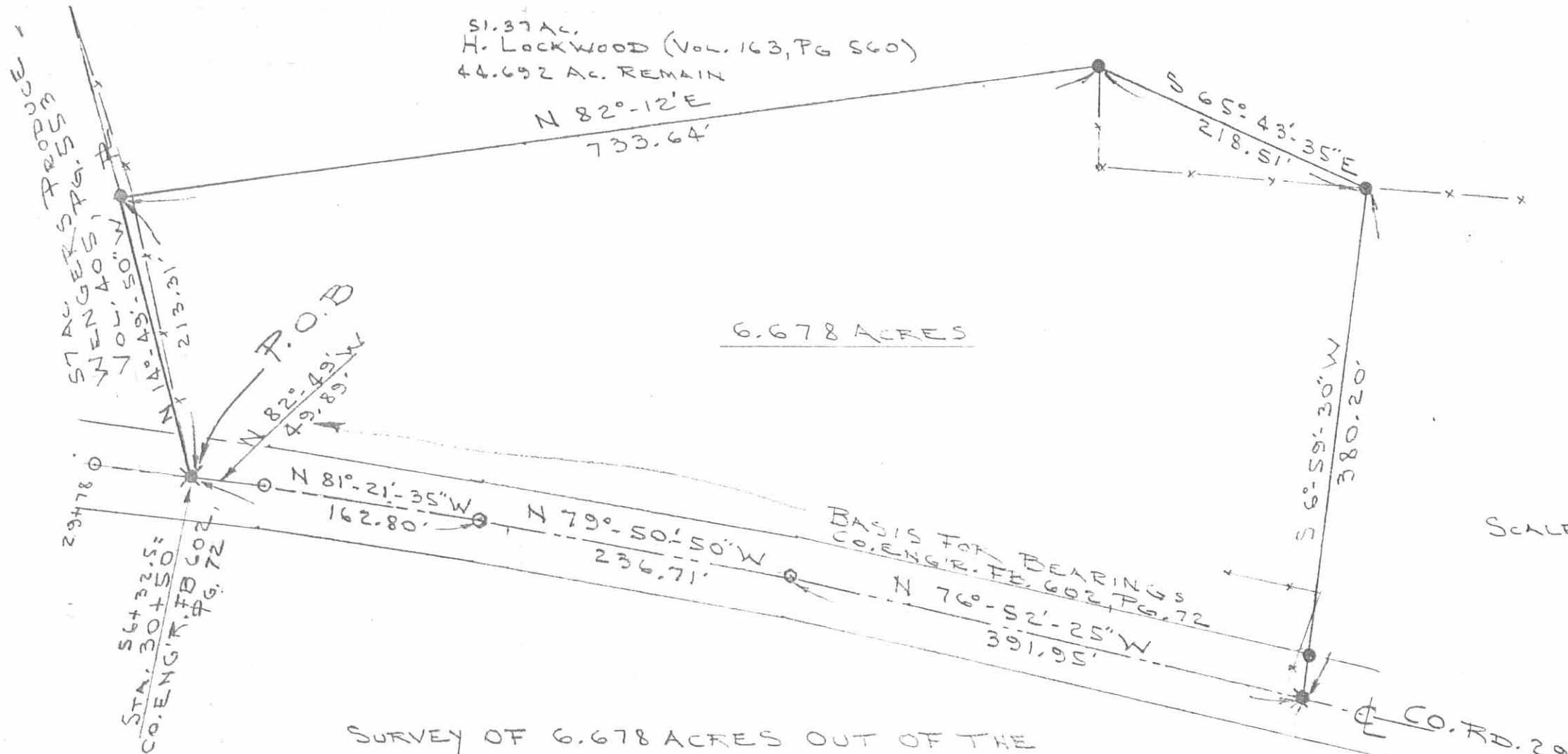
ORIGINAL STAMP IN GREEN
L-1615

INDEXED ON MAP
7676 3D

51.37 AC.
 H. LOCKWOOD (Vol. 163, Pg 560)
 44.692 AC. REMAIN

N 82°-12'E
 733.64'

6.678 ACRES



SURVEY OF 6.678 ACRES OUT OF THE
 H. LOCKWOOD 51.37 ACRES (ORIG. 65 AC., Vol. 163, Pg. 560)
 V.M.S. 9592, 9618, 10075, MONROE TWP.,
 LOGAN COUNTY, OHIO

- = 3/4" iron ROD FOUND
- = 1/2" " " set
- ✕ = RR Spike set

INDEXED ON MAP
 7676 3P

By:

JEFFREY I. LEE
 REG. SURVEYOR 6350
 AUG. 31, 1987



ORIGINAL STAMP IN GREEN

L-1615-A

Re 10-24-05 OK JLB

Lee Surveying and Mapping Co., Inc.

Land Surveys • Topography • Subdivisions • Construction Layout

117 N. Madriver St.
Bellefontaine OH 43311



Phone: (937) 593-7335
Fax: (937) 593-7444

LOCKWOOD 10.997 ACRES

Lying in Virginia Military Surveys 9592, 9618, and 10075, Monroe Township, Logan County, Ohio.

Being out of the Lloyd Lockwood and Margaret Lockwood original 44.692 acre tract as deeded and described in Official Record 50, Pg. 365 of the Logan County Records of Deeds and being more particularly described as following:

Beginning at a 3/4 inch iron rod found at Station 41 + 43 (Logan County Engineer's Field Book 602, Page 73) on the center-line of County Highway 29 (60 feet wide).

THENCE, with the center-line of County Highway 29, S 68°-32'-13"E, a distance of 337.13 feet to a MAG nail set.

THENCE, with the west line of the Margaret E. Lockwood 78.60 acre tract (Vol. 352, Pg. 790), N 14°-17'-50"W, a distance of 616.04 feet to a 5/8 inch iron rod set at THE TRUE POINT OF BEGINNING.

THENCE, S 40°-49'-37"W, a distance of 191.64 feet to a 5/8 inch iron rod found.

THENCE with the north lines of the Dale D. Barns 2.000 acre tract (O.R. 667, Pg. 869) and the Dale Barns 2.546 acre tract (O.R. 140, Pg. 547), N 65°-45'-09"W, a distance of 475.37 feet to a 3/8 inch iron rod found.

THENCE, with the north line of the said 2.546 acre tract, S 82°-36'-41"W, a distance of 42.62 feet to a 3/4 inch iron rod found.

THENCE, N 14°-17'-50"W, a distance of 692.00 feet to a 5/8 inch iron rod set.

THENCE, N 79°-57'-46"E, a distance of 572.91 feet to a 5/8 inch iron rod set.

THENCE, with the west line of the aforesaid 78.60 acre tract, S 14°-17'-50"E, a distance of 841.21 feet to the point of beginning.

Containing 10.997 acres.

The basis for bearings is the center-line of County Highway 29, being S 68°-32'13"E, and all other bearings are from angles and distances measured in a field survey by Lee Surveying and Mapping Co., Inc. on October 14, 2005

Description prepared by:



ORIGINAL STAMP IN GREEN

A handwritten signature in black ink, appearing to read 'Jeffrey I. Lee'.

Jeffrey I. Lee
Professional Surveyor 6359
October 17, 2005
Revised October 21, 2005

L-1615

INDEXED ON MAP
7674 4D-1

REC'D 10-24-05 SML/OK

Lee Surveying and Mapping Co., Inc.

Land Surveys • Topography • Subdivisions • Construction Layout

117 N. Madriver St.
Bellefontaine OH 43311



Phone: (937) 593-7335
Fax: (937) 593-7444

LOCKWOOD 16.887 ACRES

Lying in Virginia Military Surveys 9592, 9618, and 10075, Monroe Township, Logan County, Ohio.

Being out of the Lloyd Lockwood and Margaret Lockwood original 44.692 acre tract as deeded and described in Official Record 50, Pg. 365 of the Logan County Records of Deeds and being more particularly described as following:

Beginning at a 3/4 inch iron rod found at Station 41 + 43 (Logan County Engineer's Field Book 602, Page 73) on the center-line of County Highway 29 (60 feet wide).

THENCE, with the center-line of County Highway 29, S 68°-32'-13"E, a distance of 337.13 feet to a MAG nail set.

THENCE, with the west line of the Margaret E. Lockwood 78.60 acre tract (Vol. 352, Pg. 790), N 14°-17'-50"W, a distance of 1457.25 feet to a 5/8 inch iron rod set at THE TRUE POINT OF BEGINNING.

THENCE, S 79°-57'-46"W, a distance of 572.91 feet to a 5/8 inch iron rod set.

THENCE, S 14°-17'-50"E, a distance of 692.00 feet to a 3/4 inch iron rod found.

THENCE with the north line of the Tamara Kay Furlong 4.132 acre tract (O.R. 244, Pg. 522), S 82°-08'-06"W, a distance of 543.92 feet to a 5/8 inch iron rod found.

THENCE, with the lines of the Michael A. McNamara 13.290 acre tract (O.R. 639, Pg. 901, Tract II), the following three courses:

N 14°-43'-25"W, a distance of 907.52 feet to a 5/8 inch iron rod found.

N 0°-14'-10"W, a distance of 93.29 feet to a 5/8 inch iron rod found.

N 79°-57'-46"E, a distance of 1098.95 feet to a 5/8 inch iron rod found.

THENCE, with the west line of the Herbert E. Foreman, Trustee 16.56 acre tract (O.R. 270, Pg. 109, Tract 7) and the aforesaid 78.60 acre tract, S 14°-17'-50"E, a distance of 327.85 feet to the point of beginning.

Containing 16.887 acres.

The basis for bearings is the center-line of County Highway 29, being S 68°-32'13"E, and all other bearings are from angles and distances measured in a field survey by Lee Surveying and Mapping Co., Inc. on October 14, 2005



ORIGINAL STAMP IN GREEN

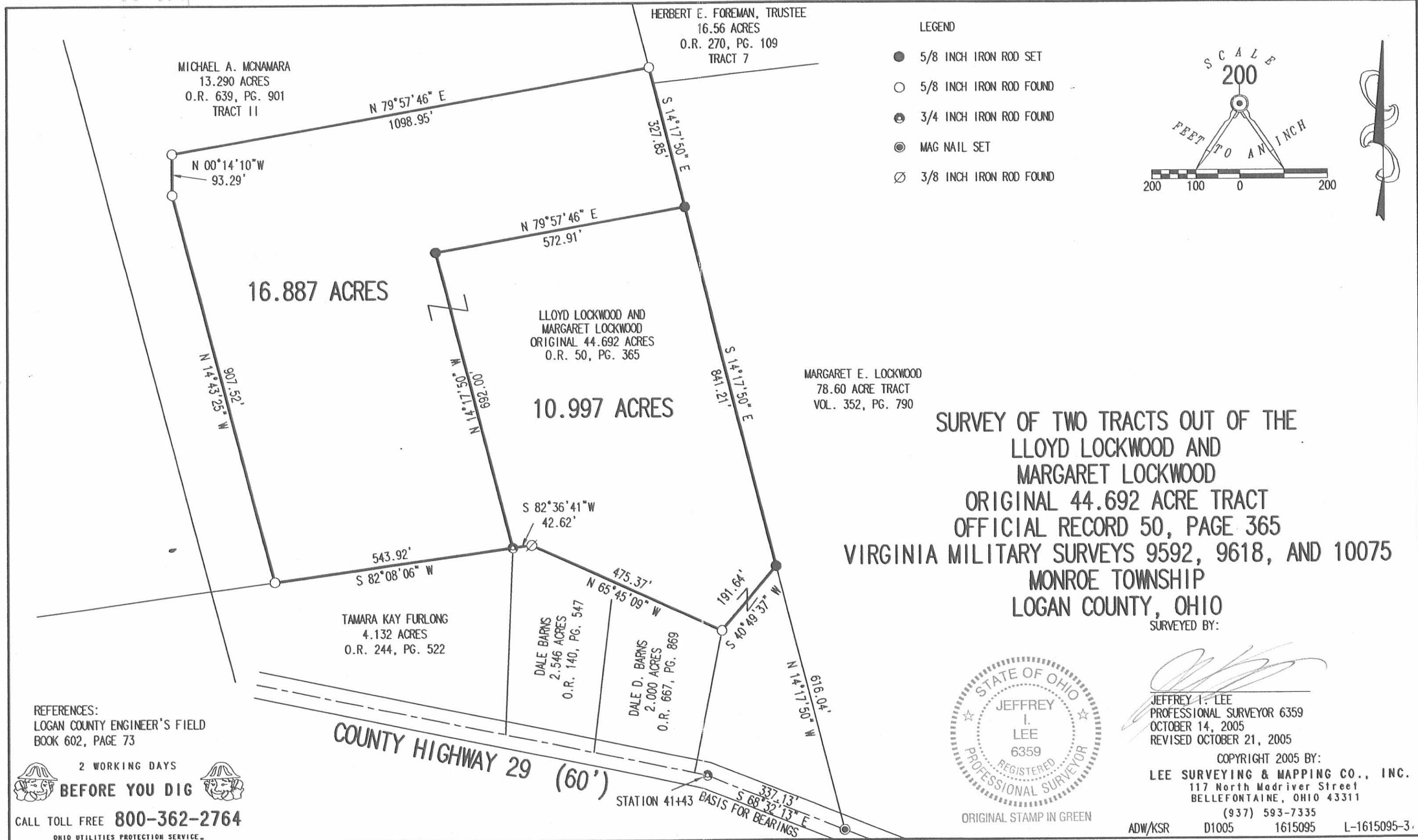
Description prepared by:

Jeffrey I. Lee
Professional Surveyor 6359
October 17, 2005
Revised October 21, 2005

INDEXED ON MAP
7674 4D-2

L-1615

REC'D 10-24-05 SMM/OK

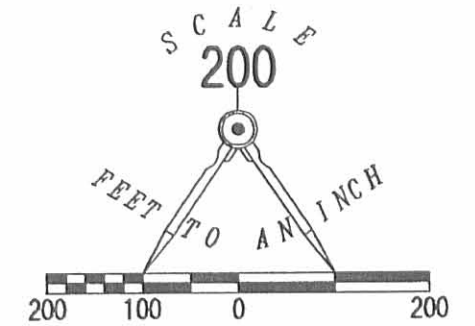


MICHAEL A. MCNAMARA
13.290 ACRES
O.R. 639, PG. 901
TRACT 11

HERBERT E. FOREMAN, TRUSTEE
16.56 ACRES
O.R. 270, PG. 109
TRACT 7

LEGEND

- 5/8 INCH IRON ROD SET
- 5/8 INCH IRON ROD FOUND
- ⊙ 3/4 INCH IRON ROD FOUND
- ⊙ MAG NAIL SET
- ⊘ 3/8 INCH IRON ROD FOUND



16.887 ACRES

LLOYD LOCKWOOD AND
MARGARET LOCKWOOD
ORIGINAL 44.692 ACRES
O.R. 50, PG. 365

10.997 ACRES

MARGARET E. LOCKWOOD
78.60 ACRE TRACT
VOL. 352, PG. 790

SURVEY OF TWO TRACTS OUT OF THE
LLOYD LOCKWOOD AND
MARGARET LOCKWOOD
ORIGINAL 44.692 ACRE TRACT
OFFICIAL RECORD 50, PAGE 365
VIRGINIA MILITARY SURVEYS 9592, 9618, AND 10075
MONROE TOWNSHIP
LOGAN COUNTY, OHIO

SURVEYED BY:

REFERENCES:
LOGAN COUNTY ENGINEER'S FIELD
BOOK 602, PAGE 73

2 WORKING DAYS
BEFORE YOU DIG
CALL TOLL FREE **800-362-2764**
OHIO UTILITIES PROTECTION SERVICE

COUNTY HIGHWAY 29 (60')

STATION 41+43 BASIS FOR BEARINGS



ORIGINAL STAMP IN GREEN

JEFFREY I. LEE
PROFESSIONAL SURVEYOR 6359
OCTOBER 14, 2005
REVISED OCTOBER 21, 2005

COPYRIGHT 2005 BY:
LEE SURVEYING & MAPPING CO., INC.
117 North Madriver Street
BELLEFONTAINE, OHIO 43311
(937) 593-7335

ADW/KSR D1005 1615095 L-1615095-3

INDEXED ON MAP
7674 4P

REC'D 5-8-00 SUM OK ✓

Lee Surveying and Mapping Co., Inc.

Land Surveys • Topography • Subdivisions • Construction Layout

117 N. Madriver St.
Bellefontaine OH 43311



Phone: (937) 593-7335
Fax: (937) 593-7444

LOCKWOOD 13.290 ACRES

Lying in Virginia Military Surveys 9592, 9618, and 10075, Monroe Township, Logan County, Ohio.

Being 13.290 acres out of the Lloyd Lockwood and Margaret Lockwood original 44.692 acre tract as deeded and described in Official Record 50, Page 365 of the Logan County Records of Deeds and being more particularly described as follows:

Beginning at a railroad spike found at Station 30 + 50 of the Logan County Engineers' Files, Field Book 602, Page 56 at the southeast corner of the Jon M. Ward 1.988 acre tract (O.R. 396, Pg. 407) and the southwest corner of the Tamara Kay Furlong 4.132 acre tract (O.R. 244, Pg. 522) on the center-line of County Highway 29 (60 feet wide).

THENCE, with the west line of the said 4.132 acre tract, N 14°-52'-39" W, a distance of 213.15 feet to a 1/2 inch iron rod found at the TRUE POINT OF BEGINNING, passing a 5/8 inch iron rod found at 32.42 feet.

THENCE, with the east lines of the said 1.988 acre tract, the Dianna L. Wirick-Ward 9.997 acre tract (O.R. 398, Pg. 239), and the Dianna L. Wirick 14.184 acre tract (O.R. 312, Pg. 716), N 14°-42'-01" W, a distance of 1297.35 feet to a 5/8 inch iron rod set.

THENCE, with the south line of the Herbert E. Foreman, Trustee of the Herbert E. Foreman Trust, Dated October 19, 1995, 13.63 acre tract (O.R. 270, Pg. 109, Tract 6), N 76°-27'-37" E, a distance of 1266.92 feet to a 5/8 inch iron rod set.

THENCE, with the west line of the Herbert E. Foreman, Trustee of the Herbert E. Foreman Trust, Dated October 19, 1995, 16.56 acre tract (O.R. 270, Pg. 109, Tract 7), S 14°-17'-50" E, a distance of 380.65 feet to a 5/8 inch iron rod set.

THENCE, S 79°-57'-46" W, a distance of 1098.95 feet to a 5/8 inch iron rod set.

THENCE, S 00°-14'-10" E, a distance of 93.29 feet to a 5/8 inch iron rod set.

THENCE, S 14°-43'-25" E, a distance of 907.52 feet to a 5/8 inch iron rod set.

THENCE, with the north line of the aforesaid 4.132 acre tract, S 82°-08'-05" W, a distance of 146.78 feet to the point of beginning.

Containing 13.290 acres.

The basis for bearings is the west line of the said 4.132 acre tract being N 14°-52'-39" W, and all other bearings are from angles and distances measured in a field survey by Lee Surveying and Mapping Co., Inc. on April 24, 2000.

Description prepared by:

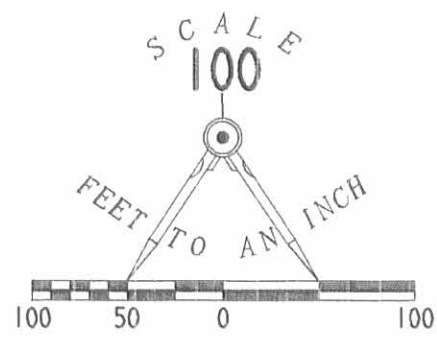
Jeffrey I. Lee
Professional Surveyor 6359
May 1, 2000



ORIGINAL STAMP IN GREEN

INDEXED ON MAP
7674 5D

L-1615



HERBERT E. FOREMAN, TRUSTEE
OF THE HERBERT E. FOREMAN TRUST
DATED OCTOBER 19, 1995
13.63 ACRES
O.R. 270, PG. 109
TRACT 6

HERBERT E. FOREMAN, TRUSTEE
OF THE HERBERT E. FOREMAN TRUST
DATED OCTOBER 19, 1995
16.56 ACRES
O.R. 270, PG. 109
TRACT 7

N 76° 27' 37" E
1266.92'

13.290 ACRES

S 14° 17' 50" E
380.65'

1098.95'
S 79° 57' 46" W

93.29'
S 00° 14' 10" E

LLOYD LOCKWOOD
AND MARGARET LOCKWOOD
44.692 ACRES
O.R. 50, PG. 365

N 14° 42' 01" W
1297.35'

DIANNA L. WIRICK
14.184 ACRES
O.R. 312, PG. 716

S 14° 43' 25" E
907.52'

LEGEND

- 5/8 INCH IRON ROD SET
- 5/8 INCH IRON ROD FOUND
- ⊕ 1/2 INCH IRON ROD FOUND
- ⊗ RAILROAD SPIKE FOUND

DIANNA L. WIRICK-WARD
9.997 ACRES
O.R. 398, PG. 239

JON M. WARD
AND PATRICIA E. WARD
1.988 ACRES
O.R. 396, PG. 407

SURVEY OF 13.290 ACRES OUT OF THE
LLOYD LOCKWOOD AND MARGARET LOCKWOOD
44.692 ACRE TRACT
OFFICIAL RECORD 50, PAGE 365
VIRGINIA MILITARY SURVEYS 9592, 9618, AND 10075
MONROE TOWNSHIP
LOGAN COUNTY, OHIO

TAMARA KAY FURLONG
4.132 ACRES
O.R. 244, PG. 522

(BASIS FOR BEARINGS)
N 14° 52' 39" W
213.15'

32.42'
STATION 30+50
LOGAN COUNTY ENGINEERS' FILES
FIELD BOOK 602, PAGE 56

COUNTY HIGHWAY 29 (60' WIDE)

SURVEYED BY

JEFFREY L. LEE
PROFESSIONAL SURVEYOR 6359
APRIL 24, 2000



COPYRIGHT 2000 BY:
LEE SURVEYING & MAPPING CO., INC.
117 North Madriver Street
BELLEFONTAINE, OHIO 43311
(937) 593-7335

ORIGINAL STAMP IN GREEN D-372 LOCKWOOD L-1615-2

2 WORKING DAYS
BEFORE YOU DIG
CALL TOLL FREE 800-362-2764
OHIO UTILITIES PROTECTION SERVICE.

INDEXED ON MAP
7/6/00 5P