



JEFFREY I. LEE, Professional Land Surveyor
 1160 Michigan Avenue
 Bellefontaine, Ohio 43311



DELMAR COX SURVEY

Lying in V.M.S. 3223 and V.M.S. 3226, Monroe Township, Logan County, Ohio.

Being out of that land in the name of Lloyd Lockwood as deeded and described in Volume 407, Page 210 and Volume 241, Page 465 of the Logan County Records of Deeds (Being the entire piece in Volume 407, Page 210) and being more particularly described as follows:

Beginning at a railroad spike on the center-line of Township Road 163 on the east line of V.M.S. 3223.

THENCE, with the east line of V.M.S. 3223 and V.M.S. 3226, also being grantor's east line, S 18°-19'-10" E, a distance of 655.96 feet to a 5/8" iron rod.

THENCE, with a fence line, S 69°-41'-35" W, a distance of 660.82 feet to a 5/8" iron rod set on a north-south fence.

THENCE, with said fence, N 4°-24'-30" E, a distance of 349.06 feet to a railroad spike set on the center-line of Township Road 163.

THENCE, with said road center-line, the following 4 bearings and distances:
 N 74°-18'-35" E, 188.35 feet to a 5/8" iron rod (set).
 N 19°-24'-35" E, 272.30 feet to a 1/2" iron rod (found).
 N 33°-24'-35" E, 137.74 feet to a nail (found)
 N 25°-37'-45" E, 90.19 feet to the point of beginning.

Containing 5.655 acres, of which 1.373 acres are in V.M.S. 3223 and 4.282 acres are in V.M.S. 3226.



Surveyed by:

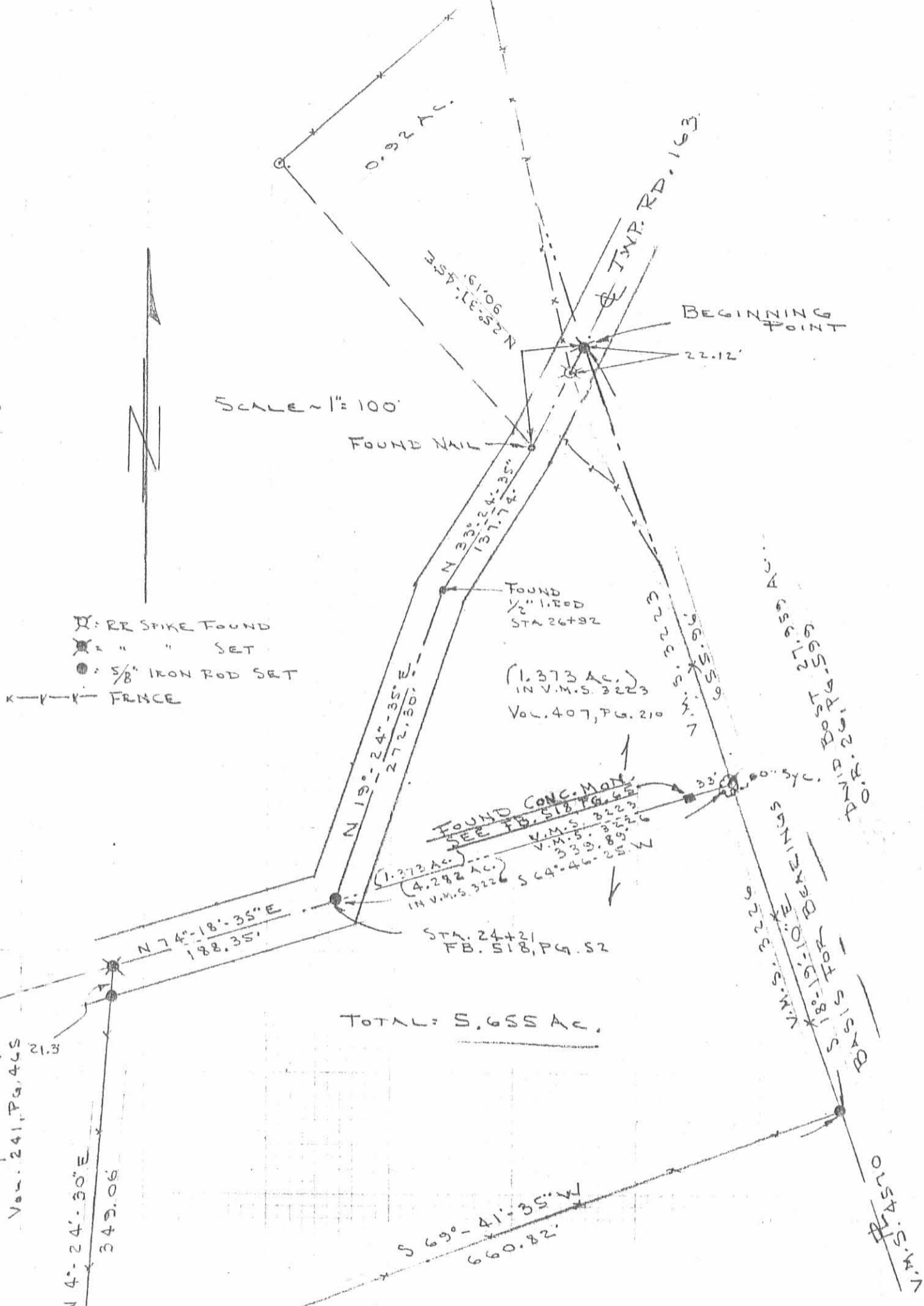
 Jeffrey I. Lee
 Registered Professional Surveyor No. 6359
 December 29, 1986

ORIGINAL STAMP IN GREEN

This description prepared from an actual field survey.

Basis for bearings: East line of V.M.S. 3223 and 3226= S 18°-19'-10" E.

INDEXED ON MAP
7588 1D



X: RR SPIKE FOUND
 X: " " SET
 ●: 5/8" IRON ROD SET
 --- FRNCE

LLOYD LOCKWOOD
 Vol. 241, Pg. 465
 21.3

TOTAL: 5.655 AC.

SURVEY OF 5.655 ACRES OUT OF THE
 LLOYD M. LOCKWOOD LAND
 (4.282 AC. OUT OF 137.25 AC. Vol. 241, Pg. 465) V.M.S. 3226
 (1.373 AC. IS THAT 1 AC. ± IN Vol. 407, Pg. 210) V.M.S. 3223
 V.M.S. 3223 & 3226, MONROE TWP.



By: *[Signature]*
 JEFFREY I. LEE
 REG. SURVEYOR 6359
 Dec. 29, 1986

INDEXED ON MAP
 7588 IP

L-1519-4

REC'D 12-19-02 SMY OK

Lee Surveying and Mapping Co., Inc.

Land Surveys • Topography • Subdivisions • Construction Layout

117 N. Madriver St.
Bellefontaine OH 43311



Phone: (937) 593-7335
Fax: (937) 593-7444

MODIE 3.654 ACRES

Lying in Virginia Military Surveys 3223 and 3226, Monroe Township, Logan County, Ohio.

Being out of the Paul J. Modie 5.655 acre tract as deeded and described in Official Record 575, Page 453, of the Logan County Records of Deeds and being more particularly described as follows:

Beginning at a railroad spike found at the intersection of the center-line of Township Road 163 and the east line of Virginia Military Survey 3223.

THENCE, with the east lines of Virginia Military Survey 3223 and 3226 and the west line of the Monte Dyke 27.731 acre tract (O.R. 570, Pg. 868, Tract II), S 18°-18'-39" E, a distance of 655.97 feet to a 5/8 inch iron rod found, passing a 5/8 inch iron rod set at 43.23 feet.

THENCE, with the north line of the Lloyd M. Lockwood original 137.25 acre tract (Vol. 241, Pg. 465), S 69°-41'-55" W, a distance of 300.00 feet to a 5/8 inch iron rod set.

THENCE, N 23°-16'-18" W, a distance of 315.18 feet to a MAG nail set, passing a 5/8 inch iron rod set at 270.93 feet.

THENCE, with the center-line of Township Road 163 (60 feet wide), the following three (3) courses:

N 19°-24'-35" E, a distance of 255.62 feet to a 1/2 inch iron rod found;

N 33°-24'-35" E, a distance of 137.96 feet to a nail found;

N 25°-37'-45" E, a distance of 89.90 feet to the point of beginning.

Containing 3.654 acres, of which 0.332 acre is within the highway right-of-way, 1.200 acres are in Virginia Military Survey 3223, and 2.454 acres are in Virginia Military Survey 3226.

The basis for bearings is the center-line of Township Road 163, being N 19°-24'-35" E, and all other bearings are from angles and distances measured in a field survey by Lee Surveying and Mapping Co., Inc. on November 13, 2002.

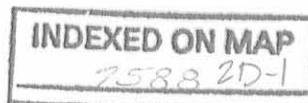
Description prepared by:



ORIGINAL STAMP IN GREEN

Jeffrey I. Lee
Professional Surveyor 6359
November 17, 2002

L-1519

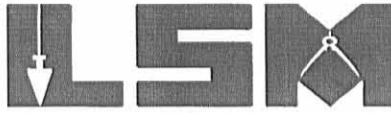


REC'D 12-19-02 JMM OK

Lee Surveying and Mapping Co., Inc.

Land Surveys • Topography • Subdivisions • Construction Layout

117 N. Madriver St.
Bellefontaine OH 43311



Phone: (937) 593-7335
Fax: (937) 593-7444

MODIE 2.000 ACRES

Lying in Virginia Military Surveys 3226, Monroe Township, Logan County, Ohio.

Being out of the Paul J. Modie 5.655 acre tract as deeded and described in Official Record 575 Page 453, of the Logan County Records of Deeds and being more particularly described as follows:

Beginning at a railroad spike found at the intersection of the center-line of Township Road 163 and the east line of Virginia Military Survey 3223.

THENCE, with the center-line of Township Road 163 (60 feet wide), the following three (3) courses:

S 25°-37'-45" W, a distance of 89.90 feet to a nail found;

S 33°-24'-35" W, a distance of 137.96 feet to a 1/2 inch iron rod found;

S 19°-24'-35" W, a distance of 255.62 feet to a MAG nail set at the TRUE POINT OF BEGINNING.

THENCE, S 23°-16'-18" E, a distance of 315.18 feet to a 5/8 inch iron rod set, passing a 5/8 inch iron set at 44.25 feet.

THENCE, with the lines of the Lloyd M. Lockwood original 137.25 acre tract (Vol. 241, Pg. 465), the following two (2) courses:

S 69°-41'-55" W, a distance of 360.82 feet to a 5/8 inch iron rod found;

N 4°-27'-12" E, a distance of 349.35 feet to a railroad spike found, passing a 5/8 inch iron rod found at 317.41 feet.

THENCE, with the center-line of Township Road 163 and the lines of the said 137.25 acre tract, the following two (2) courses:

N 74°-21'-34" E, a distance of 188.20 feet to a 5/8 inch iron rod found;

N 19°-24'-35" E, a distance of 16.64 feet to the point of beginning.

Containing 2.000 acres, of which 0.145 acre is within the highway right-of-way.

The basis for bearings is the center-line of Township Road 163 at the true point of beginning, being N 19°-24'-35" E, and all other bearings are from angles and distances measured in a field survey by Lee Surveying and Mapping Co., Inc. on November 13, 2002.

Description prepared by:



ORIGINAL STAMP IN GREEN

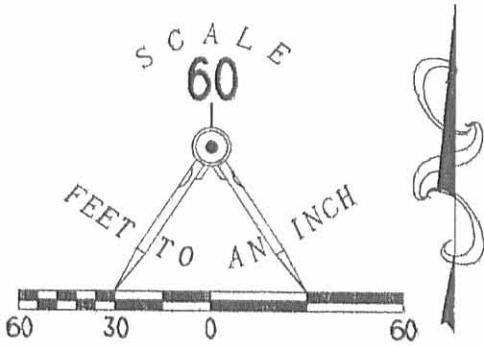
A handwritten signature in black ink, appearing to read 'J. Lee'.

Jeffrey I. Lee
Professional Surveyor 6359
November 17, 2002

L-1519



SURVEY OF 2 TRACTS OUT OF THE
PAUL J. MODIE 5.655 ACRE TRACT
OFFICIAL RECORD 575, PAGE 453
VIRGINIA MILITARY SURVEY 3223 & 3226
MONROE TOWNSHIP
LOGAN COUNTY, OHIO



LEGEND

- 5/8 INCH IRON ROD FOUND
- 5/8 INCH IRON ROD SET
- ⊗ RAILROAD SPIKE FOUND
- ⊙ MAG NAIL SET
- NAIL FOUND
- ⊗ 1/2 INCH IRON ROD FOUND
- CONCRETE MONUMENT FOUND

2243.72 FEET TO A 3/8 INCH IRON ROD FOUND AT THE CENTER-LINE OF COUNTY HIGHWAY 128 HELD FOR LINE

MONTE DYKE AND
PATRICIA K. DYKE
27.731 ACRES
O.R. 570, PG. 868
TRACT II

LOGAN COUNTY ENGINEER'S
CONCRETE MONUMENT FOUND
HELD FOR LINE

60" SYCAMORE TREE

V.M.S. 3223
V.M.S. 3226

(1.200 ACRES)
(2.454 ACRES)

PAUL J. MODIE
5.655 ACRES
O.R. 575, PG. 453

3.654 ACRES
OF WHICH 0.332 ACRE IS WITHIN
THE HIGHWAY RIGHT-OF-WAY

2.000 ACRES
OF WHICH 0.145 ACRE IS WITHIN
THE HIGHWAY RIGHT-OF-WAY

REFERENCES:

- COUNTY ENGINEER'S RECORDS:
- SURVEY BOOK 'C', PG. 153
- FIELD BOOK 706, PG. 39
- FIELD BOOK 518, PP 45-48, 51-52, AND 65-66
- ROAD RECORD 163
- ROAD RECORD 28
- R-7588
- R-8227
- R-8708
- R-5836
- PIKE RECORD 5, PG. 158
- PRESENT AND PRIOR DEEDS OF SUBJECT AND ADJOINER PROPERTY

SURVEYED BY:

Jeffrey T. Lee
JEFFREY T. LEE
PROFESSIONAL SURVEYOR 6359
NOVEMBER 13, 2002



ORIGINAL STAMP IN GREEN

LLOYD M. LOCKWOOD
AND MARGARET E. LOCKWOOD
ORIG. 137.25 ACRES
VOL. 241, PG. 465

INDEXED ON MAP
75382P

2 WORKING DAYS
BEFORE YOU DIG
CALL TOLL FREE **800-362-2764**
OHIO UTILITIES PROTECTION SERVICE.

COPYRIGHT 2002 BY:
LEE SURVEYING & MAPPING CO., INC.
117 North Madriver Street
BELLEFONTAINE, OHIO 43311
(937) 593-7335