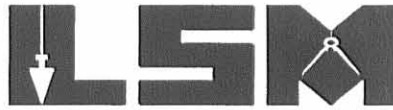


REC'D 10-3-02 SWM OK

Lee Surveying and Mapping Co., Inc.

Land Surveys • Topography • Subdivisions • Construction Layout

117 N. Madriver St.
Bellefontaine OH 43311



Phone: (937) 593-7335
Fax: (937) 593-7444

NEER 0.420 ACRES

Lying in Virginia Military Survey 3221, Monroe Township, Logan County, Ohio.

Being all of the Randy A. Neer and Tiffany R. Young 1/8 acre and 36-3/4 pole tracts as deeded and described in Official Record 402, Page 462, Tract I and Tract II, of the Logan County Records of Deeds and being more particularly described as follows:

Beginning at a point at the intersection of the center-lines of County Highway 28 and County Highway 29 (center-line station 143+10 per the Logan County Engineer's Field Book 573, Page 22), referenced by a railroad spike found on the center-line of County Highway 28 N 26°-58'-00" W, a distance of 31.83 feet.

THENCE, with the center-line of County Highway 29 (60 feet wide), S 69°-00'-00" W, a distance of 162.00 feet to a MAG nail set at the TRUE POINT OF BEGINNING (center-line Station 141+49, Field Book 573, Page 21), passing a MAG nail found at 9.66 feet.

THENCE, with the center-line of County Highway 29, S 69°-00'-00" W, a distance of 108.32 feet to a 5/8 inch iron rod found, referenced by 5/8 inch iron rod found at center-line P.I. Station 140+02 (Field Book 573, Page 20), S 69°-00'-00" W, a distance of 37.58 feet.

THENCE, with the east line of the Jacob E. Coil, Sr. 1/4 acre tract (O.R. 111, Pg. 628), N 23°-34'-00" W, a distance of 168.51 feet to a railroad tie post found, passing a 5/8 inch iron rod set at 30.03 feet.

THENCE, with the south line of the Don K. Miller original 12.56 acre tract (Vol. 291, Pg. 325), N 63°-10'-00" E, a distance of 102.32 feet to a 5/8 inch iron rod set.

THENCE, with the west line of the Marine Hamm one acre tract (Vol. 317, Pg. 361, Third Tract), S 25°-30'-09" E, a distance of 179.29 feet to the point of beginning, passing a 5/8 inch iron rod set at 149.20 feet.

Containing 0.420 acre, of which 0.074 acre is within the highway right-of-way.

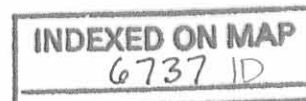
The basis for bearings is the center-line of County Highway 29, being S 69°-00'-00" W, and all other bearings are from angles and distances measured in a field survey by Lee Surveying and Mapping Co., Inc. on September 18, 2002.



ORIGINAL STAMP IN GREEN

Description prepared by:

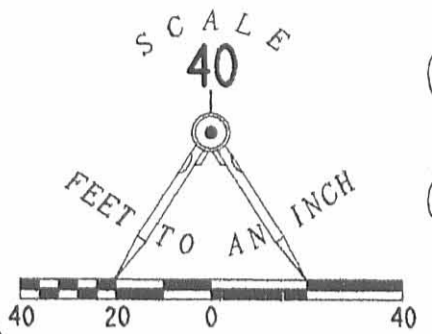
Jeffrey I. Lee
Professional Surveyor 6359
October 1, 2002



L-3435

LEGEND

- 5/8 INCH IRON ROD SET
- 5/8 INCH IRON ROD FOUND
- ⊗ RAILROAD TIE POST FOUND
- ⊗ RAILROAD SPIKE FOUND
- MAG NAIL FOUND
- MAG NAIL SET



DON K. MILLER
ORIG. 12.56 ACRES
VOL. 291, PG. 325

RANDY A. NEER AND
TIFFANY R. YOUNG
O.R. 402, PG. 462

36-3/4 POLES
TRACT II

1/8 ACRE
TRACT I

BLOCK
GARAGE

0.420 ACRE
OF WHICH 0.074 ACRE IS
IN THE HIGHWAY
RIGHT-OF-WAY

JACOB E. COIL, SR.
AND DILYS COIL
1/4 ACRE
O.R. 111, PG. 628

MARINE HAMM AND
LILLIAN KAY HAMM
ONE ACRE TRACT
VOL. 317, PG. 361
THIRD TRACT

STA. 140+02
FIELD BOOK 573, PG. 20

STA. 141+49
FIELD BOOK 573, PG. 21

CENTER-LINE INTERSECTION
1.00 FEET NORTH OF
VETERAN'S MEMORIAL MONUMENT
STA. 143+10
FIELD BOOK 573, PG. 22

COUNTY HIGHWAY 29 (60')

COUNTY HIGHWAY 28 (60')

**RETRACEMENT SURVEY OF THE
RANDY A. NEER AND TIFFANY R. YOUNG
1/8 ACRE AND 36-3/4 POLE TRACTS
OFFICIAL RECORD 402, PAGE 462
TRACT I AND TRACT II
VIRGINIA MILITARY SURVEY 3221
MONROE TOWNSHIP
LOGAN COUNTY, OHIO**



SURVEYED BY:

Jeffrey I. Lee
JEFFREY I. LEE
PROFESSIONAL SURVEYOR 6359
SEPTEMBER 18, 2002

COPYRIGHT 2002 BY:
LEE SURVEYING & MAPPING CO., INC.
117 North Madriver Street
BELLEFONTAINE, OHIO 43311
(937) 593-7335

2 WORKING DAYS
BEFORE YOU DIG
CALL TOLL FREE **800-362-2764**
OHIO UTILITIES PROTECTION SERVICE.

INDEXED ON MAP ORIGINAL STAMP IN GREEN
6737 1P

LESLIE H. GEESLIN
REGISTERED SURVEYOR NO. 5248
P O. BOX 274
RUSHSVLVANIA, OHIO 43347

TELEPHONE: (513) 468-2793

SMITH SURVEY

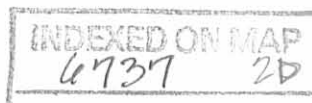
May, 1982

The following described real estate situated in the State of Ohio, County of Logan, Township of Monroe, being part of Virginia Military Survey 3221 and more particularly described as follows:

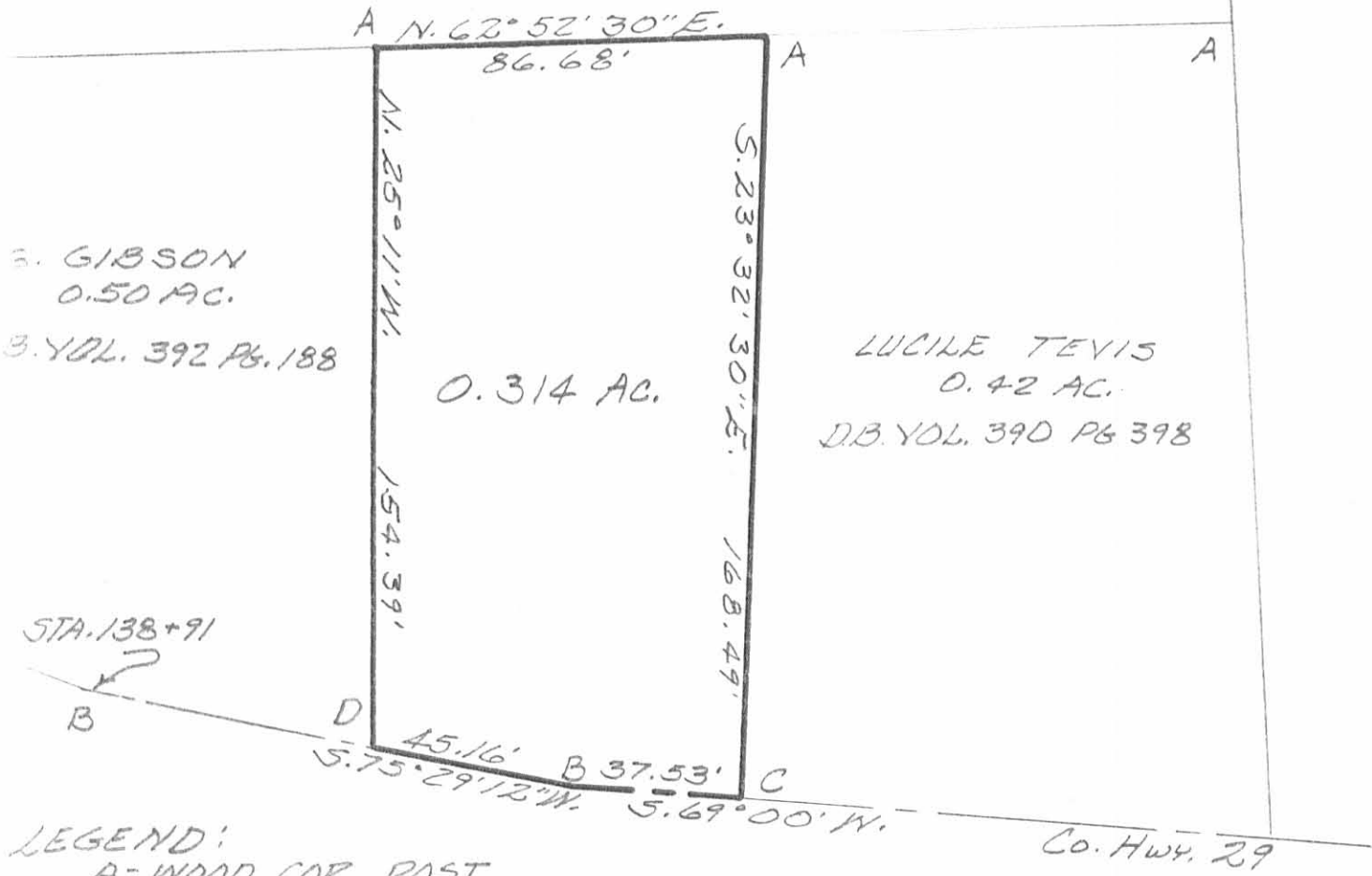
Beginning at an iron bar in the centerline of County Highway 29 at P. I. Station 140 plus 02; thence with said centerline S. $75^{\circ} 29' 12''$ W. 45.16 feet to an iron bar at the southeast corner of G. Gibson's 0.50 acre tract; thence with said Gibson's east line N. $25^{\circ} 11'$ W. 154.39 feet to a wood corner post in the south line of Don Miller's 12.56 acre tract; thence with said Miller's south line N. $62^{\circ} 52' 30''$ E. 86.68 feet to a wood corner post at the northwest corner of Lucile Tevis' 0.20 acre tract; thence with said Tevis' west line S. $23^{\circ} 32' 30''$ E. 168.49 feet to an iron bar in the centerline of C. H. 29; thence with said centerline S. $69^{\circ} 00'$ W. 37.53 feet to the place of beginning.

Containing 0.314 acre more or less.

Reference is hereby made to a plat of this survey on file with the Logan County Engineer.



DON K. MILLER
12.56 AC.
D.B. VOL. 291 PG. 327



S. GIBSON
0.50 AC.
B. VOL. 392 PG. 188

LUCILE TEVIS
0.42 AC.
D.B. VOL. 390 PG. 398

STA. 138+91
B

D 45.16' B 37.53' C
S. 75° 29' 12" W. S. 69° 00' W.

Co. Hwy. 29

LEGEND:
A=WOOD COR. POST
B=5/8" IRON BAR FD
C=5/8" IRON BAR SET
D=R.R. SPIKE SET

SMITH SURVEY
VIRGINIA MILITARY SURVEY 3221
MONROE TOWNSHIP
LOGAN COUNTY, OHIO
MAY, 1982
SCALE: 1"=40

REFERENCE:
D.B. VOL. 328 PG. 951
D.B. VOL. 64 PG. 578
D.B. VOL. 78 PG. 516

6737 2P

INDEXED ON MAP



Leslie H. Geeslin

LESLIE H. GEESLIN
KUSHSVLVANIA, OHIO

REC'D 3-5-07 SMY OK

Lee Surveying and Mapping Co., Inc.

Land Surveys • Topography • Subdivisions • Construction Layout

117 N. Madriver St.
Bellefontaine OH 43311



Phone: (937) 593-7335
Fax: (937) 593-7444

1975 - 2005 - 30 YEARS OF EXCELLENCE

**HAMM
1.501 ACRES**

Lying in Virginia Military Survey 3221, Monroe Township, Logan County, Ohio.

Being all of Marine Hamm and Lillian Kay Hamm 1.00 acre tract and 1.00 acre tract as deeded and described in Volume 317, Page 361, Second and Third tracts, of the Logan County Records of Deeds and tracts of unknown ownership and being more particularly described as follows:

Commencing at a point at Station 143+10 per the Logan County Engineer's Field Book 573, Page 22, at the intersection of center-lines of County Highway 29 (60 feet wide) and County Highway 28 (60 feet wide), referenced by a 3/4 inch iron rod found at Station 153+47.55 per the Logan County Engineer's Field Book 706, Page 43 on the center-line County Highway 28, N 26°-59'-37"W, a distance of 32.16 feet.

THENCE, with the center-line of County Highway 29, S 69°-00'-00"W, a distance of 162.00 feet to a MAG nail set.

THENCE, with the east line of Ivan Neer and Lea-Annette Neer 0.420 acre tract (O.R. 700, Pg. 466) and the east line of the Don K. Miller and Virginia L. Miller 12.56 acre tract (Vol. 291, Pg. 325), N 25°-30'-09"W, a distance of 259.90 feet to a 5/8 inch iron rod set, passing 5/8 inch iron rods set at 30.09 feet and 179.29 feet.

THENCE, with the lines of the said 12.56 acre tract the following three courses:

N 48°-54'-18"E, a distance of 11.22 feet to a 5/8 inch iron rod set.

N 27°-24'-17"W, a distance of 157.08 feet to a 5/8 inch iron rod set.

N 3°-36'-54"E, a distance of 9.18 feet to a 5/8 inch iron rod set.

THENCE, N 62°-09'-56"E, a distance of 133.86 feet to a MAG nail set, passing a 5/8 inch iron rod set at 103.86 feet.

THENCE, with the center-line of County Highway 28, S 27°-50'-04"E, a distance of 414.28 feet to a 3/4 inch iron rod found at Station 153+47.55 (Field Book 706, Page 43).

THENCE, with the center-line of County Highway 28, S 26°-59'-37"E, a distance of 32.16 feet to the point of beginning.

Containing 1.501 acres of which 0.397 acre is within the highway right-of-way.

The basis for bearings is the center-line of County Highway 29, being N 69°-00'-00"E, and all other bearings are from angles and distances measured in a field survey by Lee Surveying and Mapping Co., Inc. on October 24, 2006.



ORIGINAL STAMP IN GREEN

Description prepared by:

William K. Bruce
William K. Bruce
Professional Surveyor 7437
October 24, 2006

L-4330106



REC'D 3-5-07 SMY/OK

Lee Surveying and Mapping Co., Inc.

Land Surveys • Topography • Subdivisions • Construction Layout

117 N. Madriver St.
Bellefontaine OH 43311



Phone: (937) 593-7335
Fax: (937) 593-7444

1975 - 2005 - 30 YEARS OF EXCELLENCE

**HAMM
1.208 ACRES**

Lying in Virginia Military Survey 3221, Monroe Township, Logan County, Ohio.

Being all of the Marine Hamm and Lillian Kay Hamm 0.50 acre tract as deeded and described in Volume 317, Page 361, First tract, of the Logan County Records of Deeds and tracts of unknown onwership and being more particularly described as follows:

Commencing at a point at Station 143 + 10 per the Logan County Engineer's Field Book 573, Page 22, at the intersection of center-lines of County Highway 29 (60 feet wide) and County Highway 28 (60 feet wide), referenced by a 3/4 inch iron rod found at Station 153 + 47.55 per the Logan County Engineer's Field Book 706, Page 43 on the center-line County Highway 28, N 26°-59'-37"W, a distance of 32.16 feet.

THENCE, with the center-line of County Highway 28, N 26°-59'-37"W, a distance of 32.16 feet to a 3/4 inch iron rod found.

THENCE, with the center-line of County Highway 28, N 27°-50'-04"W, a distance of 414.28 feet to a MAG nail set at THE TRUE POINT OF BEGINNING.

THENCE, S 62°-09'-56"W, a distance of 133.86 feet to a 5/8 inch iron rod set, passing a 5/8 inch iron rod set at 30.00 feet.

THENCE, with the lines of the Don K. Miller and Virginia L. Miller 12.56 acre tract (Vol. 291, Pg. 325), the following two courses:

N 3°-36'-54"E, a distance of 12.60 feet to a 5/8 inch iron rod set.

N 27°-23'-06"W, a distance of 407.88 feet to a 5/8 inch iron rod set.

THENCE, with the south line of the David L. Turner and Donna J. Turner 77.00 acre tract (O.R. 696, Pg. 905 Parcel II), N 62°-21'-54"E, a distance of 124.09 feet to a MAG nail set, passing a 5/8 inch iron rod set at 94.09 feet.

THENCE, with the center-line of County Highway 28, S 27°-50'-04"E, a distance of 418.19 feet to the point of beginning.

Containing 1.208 acres of which 0.288 acre is within the highway right-of-way.

The basis for bearings is the center-line of County Highway 29, being N 69°-00'-00"E, and all other bearings are from angles and distances measured in a field survey by Lee Surveying and Mapping Co., Inc. on October 24, 2006.

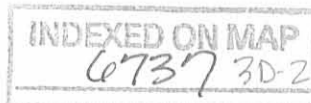


ORIGINAL STAMP IN GREEN

Description prepared by:

William K. Bruce
Professional Surveyor 7437
October 24, 2006

L-4330106



REV'D 3-5-07 SMY/OK

DAVID L. TURNER AND DONNA J. TURNER
77.00 ACRE TRACT
O.R. 696, PG. 905
PARCEL II

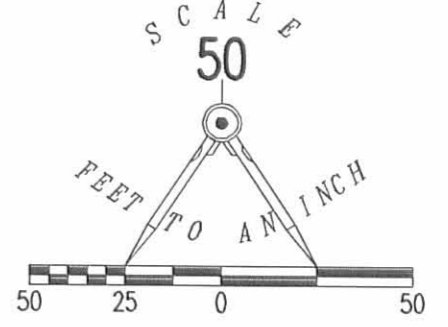
DON K. MILLER AND VIRGINIA L. MILLER
12.56 ACRE TRACT
VOL. 291, PG. 325

COUNTY HIGHWAY 28 (60')

1.208 ACRES TOTAL
OF WHICH 0.288 ACRES IS WITHIN THE
TOTAL HIGHWAY RIGHT-OF-WAY

FRAME GARAGE
ON CONCRETE SLAB
1' OVERHANG

DETAIL "B"
NOT TO SCALE



- 5/8 INCH IRON ROD SET
- 5/8 INCH IRON ROD FOUND
- ⊙ 3/4 INCH IRON ROD FOUND
- ⊙ MAG NAIL SET

A SURVEY OF A 1.208 ACRE TRACT OUT OF THE
MARINE HAMM AND LILLIAN KAY HAMM
ALL OF THE 0.50 ACRE TRACT
VOLUME 317, PAGE 361
FIRST TRACT
AND A TRACT OF UNKNOWN OWNERSHIP
AND A SURVEY OF A 1.501 ACRE TRACT
MARINE HAMM AND LILLIAN KAY HAMM
1.00 ACRE AND 1.00 ACRE TRACTS
VOLUME 317, PAGE 361
SECOND AND THIRD TRACTS
AND A TRACT OF UNKNOWN OWNERSHIP
VIRGINIA MILITARY SURVEY 3221
MONROE TOWNSHIP
LOGAN COUNTY, OHIO

SEE DETAIL "B"

1.501 ACRES
OF WHICH 0.597 ACRES IS WITHIN
THE HIGHWAY RIGHT-OF-WAY

SEE DETAIL "A"

DETAIL "A"
NOT TO SCALE

IVAN NEER AND LEA-ANNETTE NEER
0.420 ACRE TRACT
O.R. 700, PG. 466

BLOCK
GARAGE
ENCROACHES

STATION 153+47.55
FIELD BOOK 706, PAGE 43

32.16'
S 26°59'37" E

INTERSECTION OF CENTER-LINES
1.00 FEET NORTH OF VETERAN'S MEMORIAL
MONUMENT. STA. 143+10, FIELD BOOK
573, PAGE 22.

STATION 140+02
6'-32" L
FIELD BOOK 573, PAGE 20

COUNTY HIGHWAY 29 (60')

SURVEYED BY:



WILLIAM K. BRUCE
PROFESSIONAL SURVEYOR 7437
OCTOBER 24, 2006

COPYRIGHT 2006 BY:
LEE SURVEYING & MAPPING CO., INC.
117 North Madriver Street
BELLEFONTAINE, OHIO 43311
(937) 593-7335

ADW D1006 4330106 L-4330106-3

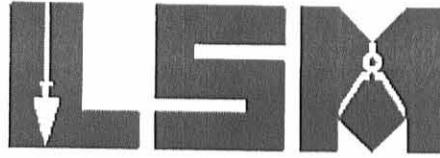
2 WORKING DAYS
BEFORE YOU DIG
CALL TOLL FREE 800-362-2764
OHIO UTILITIES PROTECTION SERVICE

INDEXED ON MAP
6737 3P

Lee Surveying and Mapping Co., Inc.

Land Surveys • Topography • Subdivisions • Construction Layout

117 N. Madriver St.
Bellefontaine OH 43311



Phone: (937) 593-7335
Fax: (937) 593-7444

MILLER 0.038 ACRE

Lying in Virginia Military Survey 3221, Monroe Township, Logan County, Ohio.

Being out of the Don K. Miller and Virginia L. Miller 12.56 acre tract as deeded and described in Volume 291, Page 325 of the Logan County Records of Deeds and being more particularly described as follows:

Commencing at a point at Station 143+10 per the Logan County Engineer's Field Book 573, Page 22, at the intersection of center-lines of County Highway 29 (60 feet wide) and County Highway 28 (60 feet wide), referenced by a 3/4 inch iron rod found at Station 153+47.55 per the Logan County Engineer's Field Book 706, Page 43 on the center-line County Highway 28, N 26°59'-37"W, a distance of 32.16 feet.

THENCE, with the center-line of County Highway 29 (60 feet wide), S 69°00'-00"W, a distance of 162.00 feet to a MAG nail set.

THENCE, with the east line of the Ivan Neer and Lea-Annette Neer 0.420 acre tract (O.R. 700, Pg. 466), N 25°30'-09"W, a distance of 179.29 feet to a 5/8 inch iron rod set AT THE TRUE POINT OF BEGINNING, at the northeast corner of the said 0.420 acre tract, passing a 5/8 inch iron rod set at 30.09 feet.

THENCE, N 26°02'-07"W, a distance of 248.15 feet to a 5/8 inch iron rod set.

THENCE, N 62°09'-56"E, a distance of 12.38 feet to a 5/8 inch iron rod set.

THENCE, with the lines of a tract of unknown ownership the following two courses:

S 3°36'-54"W, a distance of 9.18 feet to a 5/8 inch iron rod set.

S 27°24'-17"E, a distance of 157.08 feet to a 5/8 inch iron rod set.

THENCE, with the lines of the Marine Hamm and Lillian Kay Hamm, 1.00 acre tract (Vol. 317, Pg. 361, Third Tract) the following two courses:

S 48°54'-18"W, a distance of 11.22 feet to a 5/8 inch iron rod set.

S 25°30'-09"E, a distance of 80.61 feet to the point of beginning.

Containing 0.038 acre.

The basis for bearings is the center-line of County Highway 29, being N 69°00'-00"E, and all other bearings are from angles and distances measured in a field survey by Lee Surveying and Mapping Co., Inc. on October 24, 2006 and May 15, 2007.



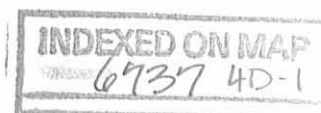
ORIGINAL STAMP IN GREEN

Description prepared by:

William K. Bruce

William K. Bruce
Professional Surveyor 7437
May 15, 2007

L-4330057



REC ID 5-17-07 8myae
Lee Surveying and Mapping Co., Inc.

Land Surveys • Topography • Subdivisions • Construction Layout

117 N. Madriver St.
Bellefontaine OH 43311



Phone: (937) 593-7335
Fax: (937) 593-7444

**MILLER
0.133 ACRE**

Lying in Virginia Military Survey 3221, Monroe Township, Logan County, Ohio.

Being out of the Don K. Miller and Virginia L. Miller 12.56 acre tract as deeded and described in Volume 291, Page 325 of the Logan County Records of Deeds and being more particularly described as follows:

Commencing at a point at Station 143+10 per the Logan County Engineer's Field Book 573, Page 22, at the intersection of center-lines of County Highway 29 (60 feet wide) and County Highway 28 (60 feet wide), referenced by a 3/4 inch iron rod found at Station 153+47.55 per the Logan County Engineer's Field Book 706, Page 43 on the center-line County Highway 28, N 26°59'-37"W, a distance of 32.16 feet.

THENCE, with the center-line of County Highway 29 (60 feet wide), S 69°00'-00"W, a distance of 162.00 feet to a MAG nail set.

THENCE, with the east line of the Ivan Neer and Lea-Annette Neer 0.420 acre tract (O.R. 700, Pg. 466), N 25°30'-09"W, a distance of 179.29 feet to a 5/8 inch iron rod set, at the northeast corner of the said 0.420 acre tract, passing a 5/8 inch iron rod set at 30.09 feet.

THENCE, N 26°02'-07"W, a distance of 248.15 feet to a 5/8 inch iron rod set AT THE TRUE POINT OF BEGINNING.

THENCE, N 26°02'-07"W, a distance of 418.86 feet to a 5/8 inch iron rod set.

THENCE, with the south line of the David L. Turner and Donna J. Turner 77.00 acre tract (O.R. 696, Pg. 905, Parcel II), N 62°21'-54"E, a distance of 9.00 feet to a 5/8 inch iron rod set.

THENCE, with the west line of a parcel of unknown ownership, the following two courses:

S 27°23'-06"E, a distance of 407.88 feet to a 5/8 inch iron rod set.

S 3°36'-54"W, a distance of 12.60 feet to a 5/8 inch iron rod set.

THENCE, S 62°09'-56"W, a distance of 12.38 feet to the point of beginning.

Containing 0.133 acre.

The basis for bearings is the center-line of County Highway 29, being N 69°00'-00"E, and all other bearings are from angles and distances measured in a field survey by Lee Surveying and Mapping Co., Inc. on October 24, 2006 and May 15, 2007.



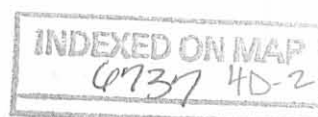
ORIGINAL STAMP IN GREEN

Description prepared by:

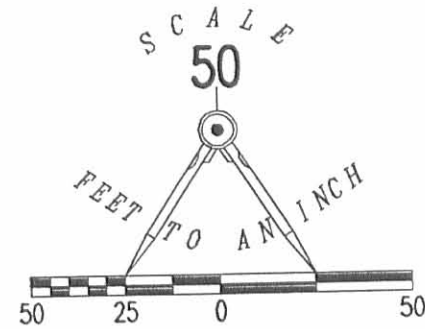
William K. Bruce

William K. Bruce
Professional Surveyor 7437
May 15, 2007

L-4330057



RECD 5-17-07 S.M.Y.O.L.



DAVID L. TURNER AND DONNA J. TURNER
77.00 ACRE TRACT
O.R. 696, PG. 905
PARCEL II

9.00' N 62°21'54" E
124.09'

1.208 ACRES TOTAL
OF WHICH 0.268 ACRES IS WITHIN THE
TOTAL HIGHWAY RIGHT-OF-WAY

FRAME GARAGE
ON CONCRETE SLAB
1' OVERHANG

0.133 ACRE

DON K. MILLER AND VIRGINIA L. MILLER
12.56 ACRE TRACT
VOL. 291, PG. 325

0.038 ACRE

1.501 ACRES
OF WHICH 0.397 ACRE IS WITHIN
THE HIGHWAY RIGHT-OF-WAY

IVAN NEER AND LEA-ANNETTE NEER
0.420 ACRE TRACT
O.R. 700, PG. 466

BLOCK
GARAGE
ENCROACHES

COUNTY HIGHWAY 29 (60')

STATION 140+02
6'-32" L
FIELD BOOK 573, PAGE 20

STATION 153+47.55
FIELD BOOK 706, PAGE 43

32.16'
S 26°59'37" E

INTERSECTION OF CENTER-LINES
1.00 FEET NORTH OF VETERAN'S MEMORIAL
MONUMENT. STA. 143+10, FIELD BOOK
573, PAGE 22.

SURVEYED BY:

William K. Bruce
WILLIAM K. BRUCE
PROFESSIONAL SURVEYOR 7437
OCTOBER 24, 2006
REVISED MAY 15, 2007

COPYRIGHT 2006 BY:
LEE SURVEYING & MAPPING CO., INC.
117 North Madriver Street
BELLEFONTAINE, OHIO 43311
(937) 593-7335



ORIGINAL STAMP IN GREEN

INDEXED ON MAP
6737 4P

ADW D0507 4330057 L-4330057

2 WORKING DAYS
BEFORE YOU DIG
CALL TOLL FREE 800-362-2764
OHIO UTILITIES PROTECTION SERVICE

8-5-16



APPROVED

SURVEY DESCRIPTION
FOR TIMOTHY I. MILLER, TRUSTEE
12.577 Acres
July 29, 2016

The following described 12.577 acre tract is situated in the State of Ohio, County of Logan, Township of Monroe, and V.M.S. 3221, being all of Timothy I. Miller, Trustee's 12.389 acre Parcel #28-124-00-00-035-000 and all of his 0.11 acre Parcel #28-124-15-01-006-000, both described in Official Record 1214, page 552;

Beginning for reference at the center of a World War II Memorial found at the intersection of the centerline of County Road 29(60' R/W) with the centerline of County Road 28, being South 15°46'48" East 31.93 feet from a railroad spike set on the centerline of County Road 28;

Thence South 80°57'46" West (assumed bearing) 308.32 feet, following the centerline of County Road 29, passing at 10.08 feet a magnetic nail found, to a 3/8 inch iron pin found and referenced as being at Sta. 140+02 in Logan County Engineer's field book 573 on page 20;

Thence South 87°37'41" West 110.67 feet, following the centerline of County Road 29, to a 3/4 inch iron pin found and referenced as being at Sta. 138+91 in Logan County Engineer's field book 573 on page 19;

Thence North 82°00'05" West 154.90 feet, following the centerline of County Road 29, to a magnetic nail set at the southwest corner of Anthony A. Kuhn and Shannon E. Weldon's one half acre tract described in Official Record 190, page 871 and at a southeast corner of said 0.11 acre tract, said magnetic nail marking the *place of beginning*;

Thence *North 82°00'05" West 479.03 feet*, following the centerline of County Road 29, the south line of said 0.11 acre tract, and a south line of said 12.389 acre tract, to a magnetic nail set at the southeast corner of Matthew E. Wenger's 3.662 acre tract described in Official Record 630, page 462 (Exhibit B);

Thence *North 09°12'19" West 174.10 feet*, following a west line of said 12.389 acre tract and an east line of said 3.662 acre tract, passing at 25.03 feet a 5/8 inch iron pin found, to a 5/8 inch iron pin found with cap marked "BLACKBURN RS 7873";

Thence *North 15°35'03" West 377.34 feet*, following a west line of said 12.389 acre tract and an east line of said 3.662 acre tract, to a 5/8 inch iron found with cap marked "BLACKBURN RS 7873" in the south line of David L. Turner and Donna J. Turner's 77.00 acre Parcel II described in Official Record 696, page 905;

Thence *North 74°25'11" East 839.46 feet*, following the north line of said 12.389 acre tract and the south line of said 77.00 acre tract, to a 5/8 inch iron pin found with cap marked

INDEXED ON MAP

6737 5D-1

“LEE PS 7437” at the northwest corner of Jill R. Rowe and Tige M. Hamm’s 0.133 acre Parcel One, Tract II described in Official Record 1037, page 979;

Thence *South 13°59’30” East 666.74 feet*, following the east line of said 12.389 acre tract, the west line of said 0.133 acre tract, the west line of Jill R. Rowe and Tige M. Hamm’s 0.038 acre Parcel One, Tract I described in Official Record 1037, page 979, and a west line of Jill R. Rowe and Tige M. Hamm’s 1.501 acre Parcel Two, Tract II described in Official Record 1037, page 979, to a 5/8 inch iron pin found with cap marked “LEE PS 6359” at the northeast corner of Ivan Neer and Lea-Annette Neer’s 0.420 acre tract described in Official Record 700, page 466;

Thence *South 75°14’55” West 188.76 feet*, following a south line of said 12.389 acre tract, the north line of said 0.420 acre tract, and the north line of Jacob E. Coil, Sr. and Dilys Coil’s ¼ acre tract described in Official Record 111, page 628, to an iron pin set at the northeast corner of said one half acre tract;

Thence *South 75°59’55” West 188.78 feet*, following a south line of said 12.389 acre tract and the north line of said one half acre tract, to an iron pin set at the northeast corner of said 0.11 acre tract;

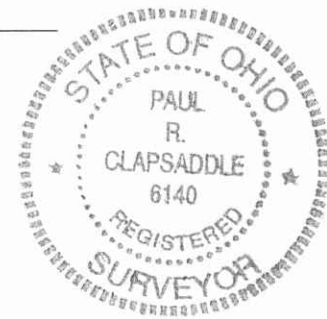
Thence *South 00°20’18” West 86.75 feet*, following the west line of said one half acre tract and the east line of said 0.11 acre tract, passing at 56.48 feet an iron pin set, to the *place of beginning, containing 12.577 acres*, more or less, and being subject to all valid easements and restrictions of record.

Of the above described 12.577 acre tract, 0.135 acre is all of said 0.11 acre tract and 12.442 acres are all of said 12.389 acre tract. Of the above described 12.577 acre tract, 0.332 acre is within the right of way of County Road 29.

The above description was prepared from a field survey made under the supervision of Paul R. Clapsaddle, Registered Surveyor #6140, during the month of July 2016. Bearings indicated herein are based on an assumed meridian with all others based on angles turned. Iron pins set are 5/8 inch by 30 inch reinforcing rods with caps marked “CLAPSADDLE RS #6140”

ATTEST: Paul R. Clapsaddle

Paul R. Clapsaddle, R.S. #6140
19019 West Darby Road
Marysville, Ohio 43040
(937) 747-2599



INDEXED ON MAP
6737 5D-2

8-5-14

APPROVED

PLAT OF SURVEY FOR THE MILLER ESTATE

STATE OF OHIO
COUNTY OF LOGAN
TOWNSHIP OF MONROE
V.M.S. 3221

David L. Turner and
Donna J. Turner
77.00 acre Parcel II
O.R. 696, Pg. 905

12.577 Acres
All of Timothy I. Miller, Trustee's
12.389 acre Parcel #28-124-00-00-035-000 and
all of his 0.11 acre Parcel #28-124-15-01-006-000
described in Official Record 1214, page 552
(0.332 acre in road right of way)
(12.442 acres by this survey all of said 12.389 acre tract)
(0.135 acre by this survey is all of said 0.11 acre tract)

Matthew E. Wenger
3.662 acre Exhibit B
O.R. 630, Pg. 462

Jill R. Rowe and
Tige M. Hamm
0.133 acre
Parcel One, Tract II
O.R. 1037, Pg. 979

Jill R. Rowe and
Tige M. Hamm
0.038 acre
Parcel One, Tract I
O.R. 1037, Pg. 979

Jill R. Rowe and
Tige M. Hamm
1.501 acre
Parcel Two, Tract II
O.R. 1037, Pg. 979

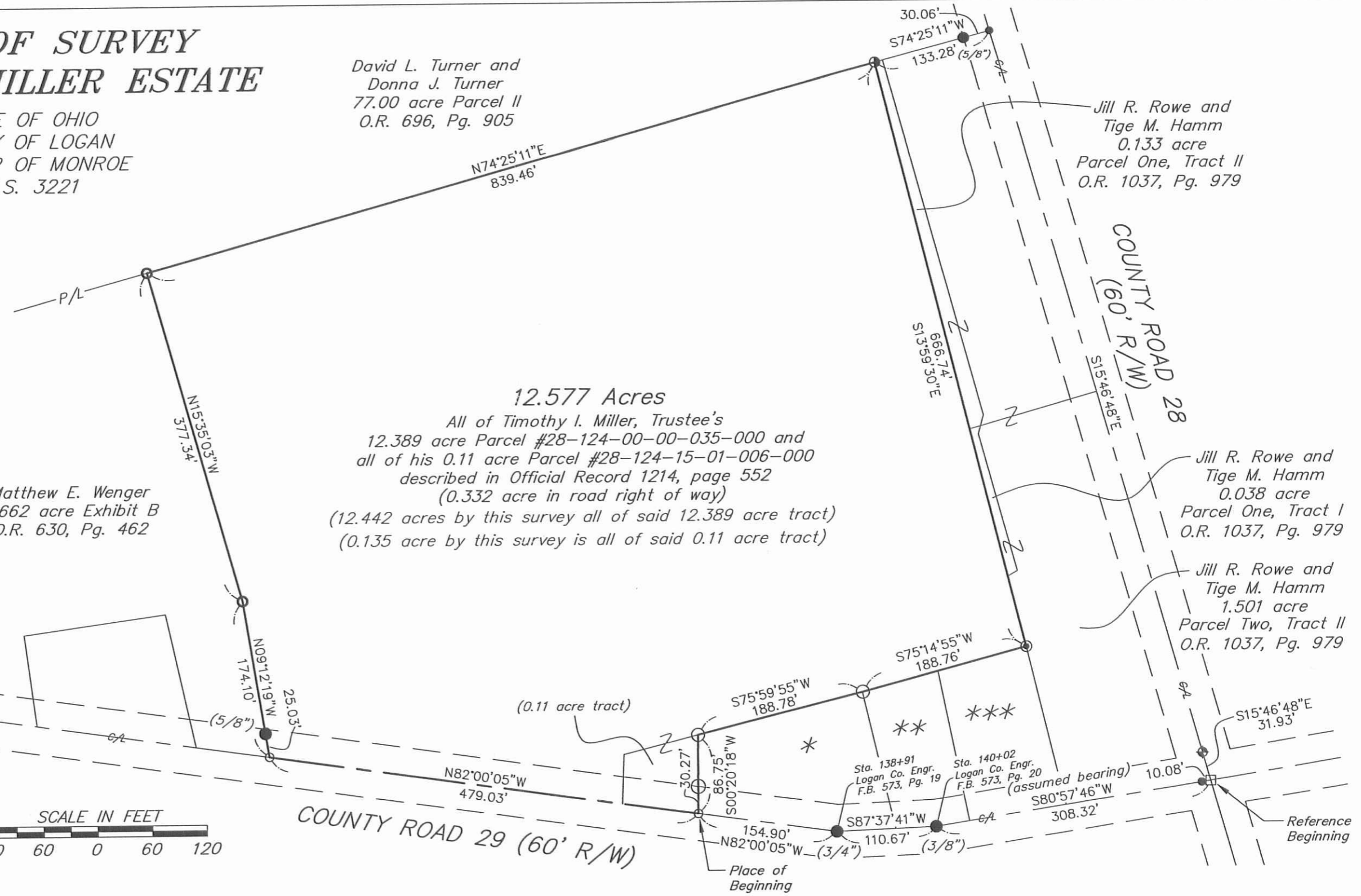
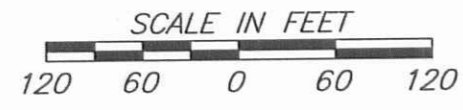
*
Anthony A. Kuhn and
Shannon E. Weldon
one half acre
O.R. 190, Pg. 871

**
Jacob E. Coil, Sr.
and Dilys Coil
1/4 acre
O.R. 111, Pg. 628

Ivan Neer and
Lea-Annette Neer
0.420 acre
O.R. 700, Pg. 466

NOTES:
Reference deeds are shown hereon
Bearings indicated hereon are based on
an assumed meridian with all others
based on angles turned

- LEGEND:
- ⊕ Railroad spike found
 - Magnetic nail found
 - Magnetic nail set
 - Iron pin found, size noted
 - Wood corner post found
 - 5/8 inch iron pin set with cap marked "CLAPSADDLE RS 6140"
 - 5/8 inch iron pin found with cap marked "LEE PS 6359"
 - 5/8 inch iron pin found with cap marked "BLACKBURN RS 7873"
 - 5/8 inch iron pin found with cap marked "LEE PS 7437"



**Paul R. Clapsaddle
and Associates**

REGISTERED ENGINEERS AND SURVEYORS
19019 WEST DARBY ROAD, MARYSVILLE OHIO 43040
(937) 747-2599

Paul R. Clapsaddle, P.E., P.S.

I hereby certify that this plat was prepared from
a field survey made under my supervision and that
monuments were found or set as indicated hereon.

Paul R. Clapsaddle
Paul R. Clapsaddle, R.S. #6140

Date: July 26, 2016
Scale: 1"=120'
Drawing: Miller12acJuly16
Project: Miller12acJuly16



INDEXED ON MAP
6737 SP