

REC'D 1-28-00 SMY OK ✓

Lee Surveying and Mapping Co., Inc.

Land Surveys • Topography • Subdivisions • Construction Layout

117 N. Madriver St.
Bellefontaine OH 43311



Phone: (937) 593-7335
Fax: (937) 593-7444

YODER 23.514 ACRES

Lying in Virginia Military Surveys 4493-4525, Monroe Township, Logan County, Ohio.

Being part of the James L. Yoder and Margaret E. Yoder original 98.32 acre tract as deeded and described in Volume 328, Page 900 of the Logan County Records of Deeds and being more particularly described as follows:

Beginning at a 1 inch iron rod found on the west line of the Virginia Military Survey 4493-4525 at the intersection of the center-lines of County Highway 1 (60 feet wide) and County Highway 5 (60 feet wide).

THENCE, with the west line of Virginia Military Surveys 4493-4525 and the center-line of County Highway 1, N 13°-22'-56" W, a distance of 292.22 feet to a MAG nail set at the TRUE POINT OF BEGINNING.

THENCE, with the west line of Virginia Military Surveys 4493-4525 and the center-line of County Highway 1, N 13°-22'-56" W, a distance of 522.00 feet to a MAG nail set.

THENCE, with the lines of the Janet Birt, Trustee original 2.05 acre tract (O.R. 410, Pg. 962) the following two courses:

N 76°-44'-03" E, a distance of 255.28 feet to a 3/8 inch iron rod found passing through a 5/8 inch iron rod set at 30.07 feet.

N 13°-24'-50" W, a distance of 349.03 feet to a 3/8 inch iron rod found.

THENCE, with the lines of the James H. Schultz original 3.01 acre tract (Vol. 385, Pg. 179) the following two courses:

N 76°-44'-12" E, a distance of 171.42 feet to a 3/8 inch iron rod found.

N 14°-19'-40" W, a distance of 311.20 feet to a 5/8 inch iron rod found.

THENCE, with the north line of Virginia Military Survey 4493-4525 and the south line of Virginia Military Survey 9793, N 75°-57'-47" E, a distance of 551.57 feet to a 5/8 inch iron rod found.

4650 1D-1

Lee Surveying and Mapping Co., Inc.

Land Surveys • Topography • Subdivisions • Construction Layout

117 N. Madriver St.
Bellefontaine OH 43311



Phone: (937) 593-7335
Fax: (937) 593-7444

THENCE, with the westerly line of the William Chad Levan original 12.306 acre tract (O.R. 349, Pg. 476), S 15°-03'-21" E, a distance of 1300.91 feet to a railroad spike found, passing a 5/8 inch iron rod found at 1270.49 feet.

THENCE, with the center-line of County Highway 5, S 66°-32'-57" W, a distance of 448.95 feet to a railroad spike found.

THENCE, with the lines of the James L. Yoder original 1.347 acre tract (O.R. 416, Pg. 928) the following two courses:

N 23°-25'-27" W, a distance of 218.14 feet to a 5/8 inch iron rod found passing through a 5/8 inch iron rod found at 29.93 feet.

S 66°-34'-00" W, a distance of 256.17 feet to a 5/8 inch iron rod found.

THENCE, with the northerly line of the J. Howard Yoder 1.68 acre tract (Vol. 328, Pg. 902), S 80°-57'-21" W, a distance of 279.39 feet to the TRUE POINT OF BEGINNING, passing a 5/8 inch iron rod found at 248.74 feet.

Containing 23.514 acres of which 0.674 acre is within the highway right-of-way.

The basis for bearings is the west line of the Virginia Military Survey 4493-4525 being N 13°-22'-56" W, and all other bearings are from angles and distances measured in a field survey by Lee Surveying and Mapping Co., Inc. on January 17, 2000.

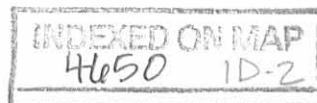
Description prepared by:

A handwritten signature in black ink, appearing to read 'Jeffrey I. Lee', is written over a faint, circular stamp.

Jeffrey I. Lee
Professional Surveyor 6359
January 21, 2000



ORIGINAL STAMP IN GREEN
L-2741



REV'D 1-28-00 SMY OLC V

JOAN L. SKIDMORE, ROBERT E. LEIB,
MELVIN L. LEIB AND DORIS P. LEIB
ORIG. 109.25 ACRES
O.R. 164, PG. 384
TRACT 1

JAMES H. SCHULTZ
AND NEDRA SUE SCHULTZ
3.01 ACRES
VOL. 385, PG. 179

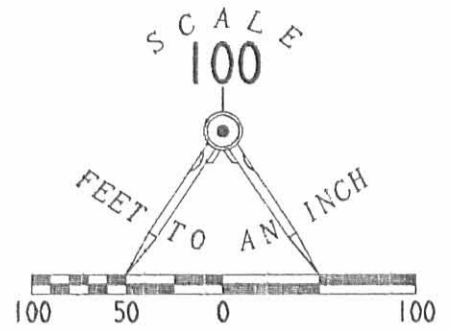
JANET BIRT, TRUSTEE
2.05 ACRES
O.R. 410, PG. 962

23.514 ACRES
OF WHICH 0.674 ACRE IS WITHIN
THE HIGHWAY RIGHT-OF-WAY

JAMES L. YODER
AND MARGARET E. YODER
1.347 ACRES
O.R. 416, PG. 928

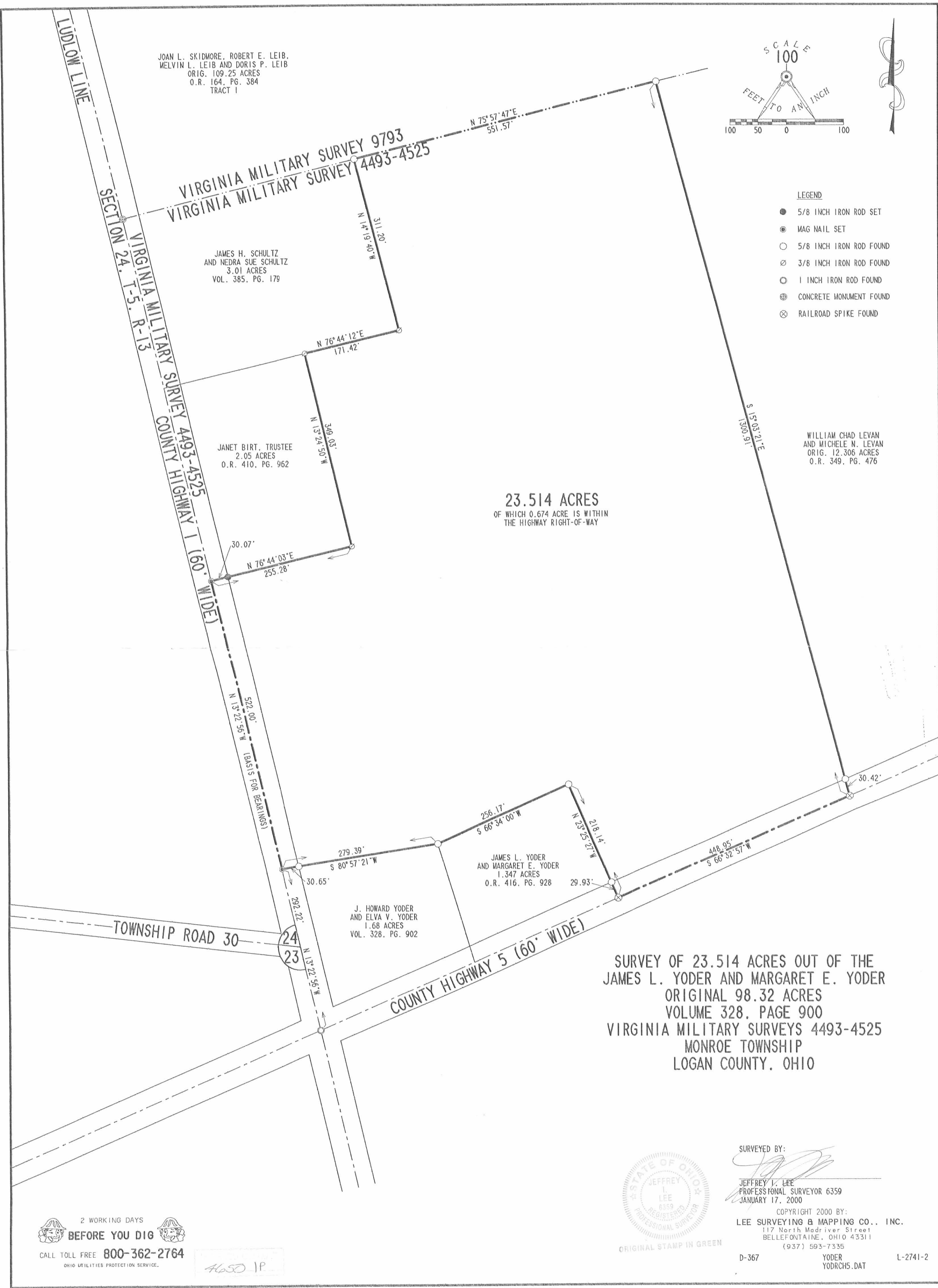
J. HOWARD YODER
AND ELVA V. YODER
1.68 ACRES
VOL. 328, PG. 902

WILLIAM CHAD LEVAN
AND MICHELE N. LEVAN
ORIG. 12.306 ACRES
O.R. 349, PG. 476



LEGEND

- 5/8 INCH IRON ROD SET
- ⊙ MAG NAIL SET
- 5/8 INCH IRON ROD FOUND
- ⊗ 3/8 INCH IRON ROD FOUND
- ⊙ 1 INCH IRON ROD FOUND
- ⊕ CONCRETE MONUMENT FOUND
- ⊗ RAILROAD SPIKE FOUND



SURVEY OF 23.514 ACRES OUT OF THE
JAMES L. YODER AND MARGARET E. YODER
ORIGINAL 98.32 ACRES
VOLUME 328, PAGE 900
VIRGINIA MILITARY SURVEYS 4493-4525
MONROE TOWNSHIP
LOGAN COUNTY, OHIO

SURVEYED BY:

JEFFREY I. LEE
PROFESSIONAL SURVEYOR 6359
JANUARY 17, 2000



ORIGINAL STAMP IN GREEN

COPYRIGHT 2000 BY:
LEE SURVEYING & MAPPING CO., INC.
117 North Madriver Street
BELLEFONTAINE, OHIO 43311
(937) 593-7335

D-367 YODER
YODRCH5.DAT

L-2741-2

2 WORKING DAYS
BEFORE YOU DIG
CALL TOLL FREE 800-362-2764
OHIO UTILITIES PROTECTION SERVICE.

4650 IP



Lee Surveying and Mapping Co., Inc.



Land Surveys • Topography • Subdivisions • Construction Layout

117 N. Madriver Street
Bellefontaine OH 43311

Phone: (937) 593-7335
Fax: (937) 593-7444

YODER 1.347 ACRES

Lying in Virginia Military Survey 4493-4525, Monroe Township, Logan County, Ohio.

Being out of the James L. Yoder and Margaret E. Yoder original 98.32 acre tract as deeded and described in Volume 328, Page 900 of the Logan County Records of Deeds and being more particularly described as follows:

Beginning at a 1 inch iron rod found at the intersection of the Ludlow line and the center-lines of County Highway 1 and County Highway 5.

THENCE, with the center-line of County Highway 5 (60 feet wide), N 59°-51'-00" E, a distance of 296.16 feet to a railroad spike set at the TRUE POINT OF BEGINNING.

THENCE, with the east line of the J. Howard Yoder 1.68 acre tract (Vol. 328, Pg. 902), N 23°-29'-33" W, a distance of 219.68 feet to a 5/8 inch iron rod found, passing a 5/8 inch iron rod found at 30.06 feet.

THENCE, N 59°-51'-00" E, a distance of 256.24 feet to a 5/8 inch iron rod set.

THENCE, S 30°-09'-00" E, a distance of 218.19 feet to a railroad spike set on the center-line of County Highway 5, passing a 5/8 inch iron rod set at 188.19 feet.

THENCE, with the center-line of County Highway 5, S 59°-51'-00" W, a distance of 281.71 feet to the point of beginning.

Containing 1.347 acres of which 0.192 acre is in the highway right-of-way.

The basis for bearings is the center-line of County Highway 5, being N 59°-51'-00" E, and all other bearings are from angles and distances measured in a field survey by Lee Surveying and Mapping Co., Inc. on May 24, 1999.

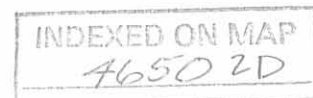


ORIGINAL STAMP IN GREEN

Description prepared by:

Jeffrey I. Lee
Professional Surveyor 6359
May 24, 1999

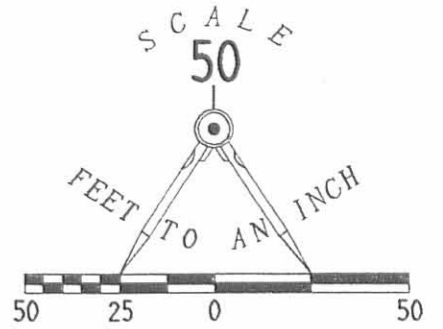
L-2741



REFERENCES:
 LOGAN COUNTY ENGINEER'S FILES:
 O.K.S. BOOK 13, PG. 42
 FIELD BOOK 497, PGS. 65-79
 L-2585

JAMES L. YODER AND
 MARGARET E. YODER
 ORIG. 98.32 ACRES
 VOL. 328, PG. 900

J. HOWARD YODER AND
 ELVA V. YODER
 1.68 ACRES
 VOL. 328, PG. 902



LEGEND

- 5/8" IRON ROD SET
- 5/8" IRON ROD FOUND
- 1" IRON ROD FOUND
- ⊕ RAILROAD SPIKE SET

1.347 ACRES
 OF WHICH 0.192 ACRE ARE
 WITHIN THE HIGHWAY RIGHT-OF-WAY

**SURVEY OF A
 1.347 ACRE TRACT
 OUT OF THE
 JAMES L. YODER AND
 MARGARET E. YODER
 ORIGINAL 98.32 ACRE TRACT
 VOLUME 328, PAGE 900
 VIRGINIA MILITARY SURVEY 4493-4525
 MONROE TOWNSHIP
 LOGAN COUNTY, OHIO**

SURVEYED BY:

Jeffrey I. Lee
 JEFFREY I. LEE
 PROFESSIONAL SURVEYOR 6359
 MAY 24, 1999

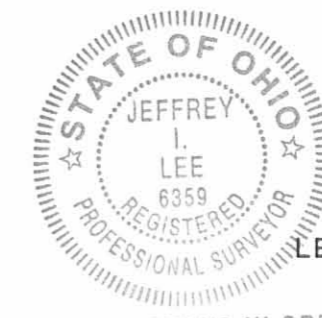
COPYRIGHT 1999 BY:

LEE SURVEYING & MAPPING CO., INC.

117 North Madriver Street
 BELLEFONTAINE, OHIO 43311

(937) 593-7335

D-346 JYCR5 L-2741-3



ORIGINAL STAMP IN GREEN

INDEXED ON MAP
 4650 2P



CALL TOLL FREE **800-362-2764**

OHIO UTILITIES PROTECTION SERVICE.

SECTION 24, T-5, R-13
 VIRGINIA MILITARY SURVEY 4493-4525
 LUDLOW LINE
 COUNTY HIGHWAY 1

(BASIS FOR BEARINGS) N 59° 51' 00" E
 296.16'
COUNTY HIGHWAY 5
 (60' WIDE)

N 23° 29' 33" W
 219.68'

30.06'

281.71'
 S 59° 51' 00" W

S 30° 09' 00" E
 218.19'

N 59° 51' 00" E
 256.24'

REC'D 10-10-97 SLY OK ✓



Lee Surveying and Mapping Co., Inc.



Farm Surveys • Lot Surveys • Topography • Subdivisions • Construction Layout

117 NORTH MADRIVER STREET
BELLEFONTAINE, OHIO 43311

(937) 593-7335
FAX (937) 593-7444

JAMES L. YODER 12.306 ACRES

Lying in Virginia Military Survey 4493, Monroe Township, Logan County, Ohio.

Being out of the James L. Yoder and Margaret E. Yoder original 98.32 acre tract as deeded and described in Volume 328, Page 900 of the Logan County Records of Deeds and being more particularly described as follows:

Beginning at a 1 inch iron rod found at the intersection of the center-lines of County Highway 5 and County Highway 1, which is also Ludlow Line, and the westerly line of the Virginia Military Survey 4493.

THENCE, with the center-line of County Highway 5 (60 feet wide), N 66°-33'-00" E, a distance of 1026.72 feet to a MAG nail set at the TRUE POINT OF BEGINNING.

THENCE, N 15°-03'-21" W, a distance of 1300.91 feet to a 5/8 inch iron rod set on the north line of Virginia Military Survey 4493, and the southerly line of the Joan L. Skidmore, etal original 109.25 acre tract (O.R. 164, Pg. 384), passing a 5/8 inch iron rod set at 30.33 feet.

THENCE, with the north line of Virginia Military Survey 4493, and the southerly line of the said 109.25 acre tract, N 75°-57'-19" E, a distance of 443.34 feet to a point.

THENCE, with the westerly lines of the Charles W. Sharp, Trustee of the Charles W. Sharp Trust, original 70.5 acre tract (O.R. 113, Pg. 856), and the Alex L. Yoder 2.002 acre tract (O.R. 180, Pg. 263), S 13°-12'-48" E, a distance of 1234.17 feet to a 1-1/4 inch iron rod found on the center-line of County Highway 5, passing 5/8 inch iron rods set at 5.00 feet and at 1203.68 feet.

THENCE, with the center-line of County Highway 5, S 66°-33'-00" W, a distance of 407.96 feet to the point of beginning.

Containing 12.306 acres, of which 0.281 acre is within the right-of-way of County Highway 5.

The basis for bearings is the center-line of County Highway 5, being S 66°-33'-00" W, and all other bearings are from angles and distances measured in a field survey by Lee Surveying and Mapping Co., Inc. on October 6, 1997.



ORIGINAL STAMP IN GREEN

Description prepared by:

Jeffrey I. Lee
Jeffrey I. Lee
Professional Surveyor 6359
October 8, 1997

L-2585

INDEXED ON MAP
4050 3D

JOAN L. SKIDMORE
ORIG. 109.25 ACRES
O.R. 164, PG. 384

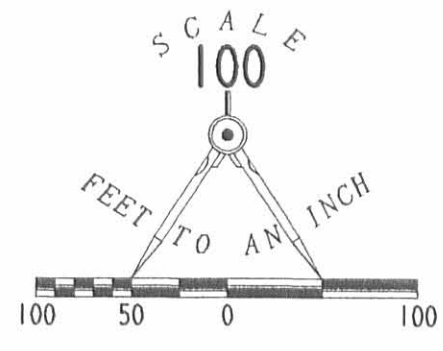
V.M.S. 9793
V.M.S. 10853

V.M.S. 10853
V.M.S. 4493

N 75° 57' 19" E
443.34'

5.00'

V.M.S. 9793
V.M.S. 4493



2 WORKING DAYS
BEFORE YOU DIG
CALL TOLL FREE **800-362-2764**
OHIO UTILITIES PROTECTION SERVICE.

LEGEND

- 5/8" IRON ROD SET
- ⊙ MAG NAIL SET
- ⊕ 1-1/4" IRON ROD FOUND
- 1" IRON ROD FOUND

CHARLES W. SHARP
TRUSTEE OF THE
CHARLES W. SHARP TRUST
ORIG. 70.5 ACRES
O.R. 113, PG. 856

12.306 ACRES
OF WHICH 0.281 ACRE IS WITHIN
THE RIGHT-OF-WAY

S 13° 12' 48" E
1234.17'

ALEX L. YODER
2.002 ACRES
O.R. 180, PG. 263

JAMES L. YODER
ORIGINAL 98.32 ACRES
VOL. 328, PG. 400

N 15° 03' 21" W
1300.91'

30.49'

REFERENCES

LOGAN COUNTY ENGINEER'S FILES:
FIELD BOOK 660, PG. 61 & 62
FIELD BOOK 598, PG. 10-31
R-5371, R-4650 & R-8761
X-5A

30.33'

(BASIS FOR BEARINGS)
S 66° 33' 00" W
407.96'

N 66° 33' 00" E
1026.72'



ORIGINAL STAMP IN GREEN

SURVEYED BY:

Jeffrey I. Lee
JEFFREY I. LEE
PROFESSIONAL SURVEYOR 6359
OCTOBER 6, 1997

COPYRIGHT 1997 BY:

LEE SURVEYING & MAPPING CO., INC.
117 North Madriver Street
BELLEFONTAINE, OHIO 43311
(937) 593-7335

**SURVEY OF 12.306 ACRES OUT OF THE
JAMES L. YODER AND MARGARET E. YODER
ORIGINAL 98.32 ACRE TRACT
VOLUME 328, PAGE 900
VIRGINIA MILITARY SURVEY 4493
MONROE TOWNSHIP
LOGAN COUNTY, OHIO**

INDEXED ON MAP
4650 3P

D 318 YODERCR5

L-2585-3

LUDLOW LINE
COUNTY HIGHWAY 1

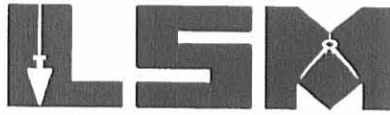
COUNTY HIGHWAY 5 (60')

RECD 11-2-01 SM OK

Lee Surveying and Mapping Co., Inc.

Land Surveys • Topography • Subdivisions • Construction Layout

117 N. Madriver St.
Bellefontaine OH 43311



Phone: (937) 593-7335
Fax: (937) 593-7444

HORMANN 2.876 ACRES

Lying in Virginia Military Surveys 4493-4525, Monroe Township, Logan County, Ohio.

Being part of the Todd A. Hormann and Peggy L. Hormann 23.514 acre tract as deeded and described in Official Record 478, Page 532 of the Logan County Records of Deeds and being more particularly described as follows:

Beginning at a 1 inch iron rod found on the west line of the Virginia Military Survey 4493-4525 at the intersection of the center-lines of County Highway 1 (60 feet wide) and County Highway 5 (60 feet wide).

THENCE, with the west line of Virginia Military Surveys 4493-4525 and the center-line of County Highway 1, N 13°-22'-56" W, a distance of 352.39 feet to a MAG nail set at the TRUE POINT OF BEGINNING.

THENCE, with the west line of Virginia Military Surveys 4493-4525 and the center-line of County Highway 1, N 13°-22'-56" W, a distance of 461.83 feet to a MAG nail found.

THENCE, with the south line of the Janet Birt, Trustee original 2.05 acre tract (O.R. 410, Pg. 962), N 76°-44'-03" E, a distance of 255.28 feet to a 3/8 inch iron rod found, passing a 5/8 inch iron rod found at 30.07 feet.

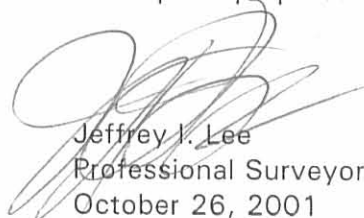
THENCE, S 15°-50'-31" E, a distance of 482.69 feet to a 5/8 inch iron rod set.

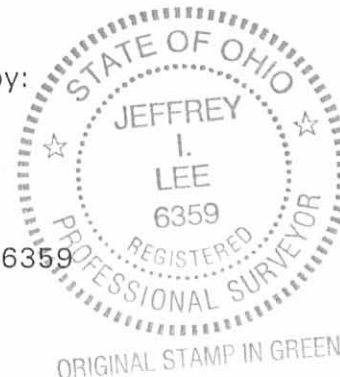
THENCE, S 80°-57'-21" W, a distance of 276.79 feet to the point of beginning, passing a 5/8 inch iron rod set at 246.14 feet.

Containing 2.876 acres, of which 0.319 acre is within the highway right-of-way.

The basis for bearings is the west line of the Virginia Military Survey 4493-4525 being N 13°-22'-56" W, and all other bearings are from angles and distances measured in a field survey by Lee Surveying and Mapping Co., Inc. on October 26, 2001.

Description prepared by:


Jeffrey I. Lee
Professional Surveyor 6359
October 26, 2001



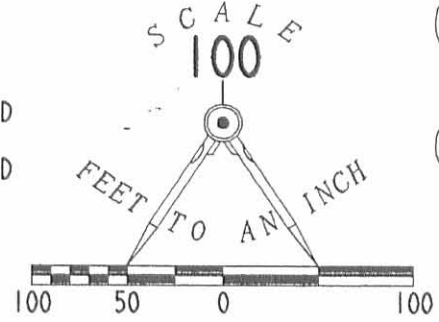
INDEXED ON MAP
46504D

L-2741

JANET BIRT, TRUSTEE
2.05 ACRES
O.R. 410, PG. 962

LEGEND

- 5/8 INCH IRON ROD SET
- ⊙ MAG NAIL SET
- 5/8 INCH IRON ROD FOUND
- ⊗ 3/8 INCH IRON ROD FOUND
- ⊙ 1 INCH IRON ROD FOUND
- ⊗ MAG NAIL FOUND



COUNTY HIGHWAY 1 (60' WIDE)
LUDLOW LINE

2.876 ACRES
OF WHICH 0.319 ACRE
IS WITHIN THE
HIGHWAY RIGHT-OF-WAY

TODD A. HORMANN AND
PEGGY L. HORMANN
23.514 ACRES
O.R. 478, PG. 532
PARCEL 4

VIRGINIA MILITARY SURVEY 4493-4525
SECTION 24, T-5, R-13
(BASIS FOR BEARINGS)

TOWNSHIP ROAD 30

COUNTY HIGHWAY 5 (60' WIDE)

CITIZENS NATIONAL BANK
OF URBANA
1.347 ACRES
O.R. 478, PG. 438

J. HOWARD YODER
AND ELVA V. YODER
1.68 ACRES
VOL. 328, PG. 902

SURVEY OF 2.876 ACRES OUT OF THE
TODD A. HORMANN AND PEGGY L. HORMANN
ORIGINAL 23.514 ACRES
OFFICIAL RECORD 478, PG. 532
VIRGINIA MILITARY SURVEYS 4493-4525
MONROE TOWNSHIP
LOGAN COUNTY, OHIO



SURVEYED BY:

Jeffrey I. Lee
 JEFFREY I. LEE
 PROFESSIONAL SURVEYOR 6359
 OCTOBER 26, 2001

COPYRIGHT 2001 BY:

LEE SURVEYING & MAPPING CO., INC.
 117 North Madriver Street
 BELLEFONTAINE, OHIO 43311
 (937) 593-7335

2 WORKING DAYS
BEFORE YOU DIG
 CALL TOLL FREE **800-362-2764**
 OHIO UTILITIES PROTECTION SERVICE.

ORIGINAL STAMP IN GREEN

INDEXED ON MAP
4650 49

D-367

YODRCH5A
YODRCH5.DAT

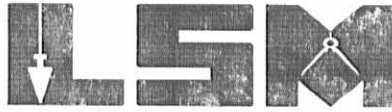
L-2741-3

REV'D 6-16-03 SML OK

Lee Surveying and Mapping Co., Inc.

Land Surveys • Topography • Subdivisions • Construction Layout

117 N. Madriver St.
Bellefontaine OH 43311



Phone: (937) 593-7335
Fax: (937) 593-7444

HORMANN 6.105 ACRES

Lying in Virginia Military Surveys 4493-4525, Monroe Township, Logan County, Ohio.

Being out of the Todd A. Hormann and Peggy L. Hormann 23.514 acre tract as deeded and described in Official Record 478, Page 532 of the Logan County Records of Deeds and being more particularly described as follows:

Beginning at a 1 inch iron rod found on the west line of Virginia Military Survey 4493-4525 at the intersection of the center-lines of County Highway 1 (60 feet wide) and County Highway 5 (60 feet wide).

THENCE, with the Ludlow Line, the west line of Virginia Military Surveys 4493-4525 and the center-line of County Highway 1, N 13°-22'-56" W, a distance of 352.39 feet to a MAG nail found at the TRUE POINT OF BEGINNING.

THENCE, with the Ludlow Line, the west line of Virginia Military Surveys 4493-4525 and the center-line of County Highway 1, N 13°-22'-56" W, a distance of 461.83 feet to a MAG nail found.

THENCE, with the south line of the Janet Birt, Trustee 2.05 acre tract (O.R. 410, Pg. 962), N 76°-44'-03" E, a distance of 255.28 feet to a 3/8 inch iron rod found, passing a 5/8 inch iron rod found at 30.07 feet.

THENCE, with the east line of the said 2.05 acre tract, N 13°-24'-50" W, a distance of 349.03 feet to a 3/8 inch iron rod found.

THENCE, with the south line of the James H. Schultz 3.01 acre tract (Vol. 385, Pg. 179), N 76°-44'-12" E, a distance of 171.42 feet to a 3/8 inch iron rod found.

THENCE, S 14°-19'-40" E, a distance of 801.90 feet to a 5/8 inch iron rod set.

THENCE, parallel to and 60 feet north of the north line of the Citizens National Bank of Urbana 1.347 acre tract (O.R. 478, Pg. 438), S 66°-34'-00" W, a distance of 166.72 feet to a 5/8 inch iron rod set.

THENCE, parallel to and 60 feet north of the north line of the J. Howard Yoder 1.68 acre tract (Vol. 328, Pg. 902), S 80°-57'-21" W, a distance of 276.36 feet to the point of beginning, passing a 5/8 inch iron rod set at 246.14 feet.

Containing 6.105 acres, of which 0.319 acre is within the highway right-of-way.

The basis for bearings is the west line of the Virginia Military Survey 4493-4525 being N 13°-22'-56" W, and all other bearings are from angles and distances measured in a field survey by Lee Surveying and Mapping Co., Inc. on June 6, 2003.

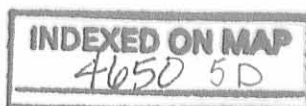
Description prepared by:



ORIGINAL STAMP IN GREEN

Jeffrey I. Lee
Professional Surveyor 6359
June 13, 2003

L-2741



2010 6-10-03 SWM/ML

JAMES H. SCHULTZ
AND NEDRA SUE SCHULTZ
3.01 ACRES
VOL. 385, PG. 179

JANET BIRT, TRUSTEE
2.05 ACRES
O.R. 410, PG. 962

TODD A. HORMANN AND
PEGGY L. HORMANN
ORIG. 23.514 ACRES
O.R. 478, PG. 532

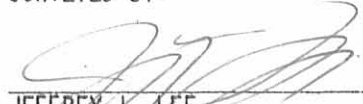
J. HOWARD YODER
AND ELVA V. YODER
1.68 ACRES
VOL. 328, PG. 902

CITIZENS NATIONAL
BANK OF URBANA
1.347 ACRES
O.R. 478, PG. 438

6.105 ACRES
OF WHICH 0.319 ACRE IS WITHIN
THE HIGHWAY RIGHT-OF-WAY

**SURVEY OF 6.105 ACRES OUT OF
TODD A. HORMANN AND
PEGGY L. HORMANN
ORIGINAL 23.514 ACRE TRACT
OFFICIAL RECORD 478, PAGE 532
VIRGINIA MILITARY SURVEYS 4493-4525
MONROE TOWNSHIP
LOGAN COUNTY, OHIO**

SURVEYED BY:


JEFFREY I. LEE
PROFESSIONAL SURVEYOR 6359
JUNE 6, 2003

COPYRIGHT 2003 BY:
LEE SURVEYING & MAPPING CO., INC.
117 North Madriver Street
BELLEFONTAINE, OHIO 43311
(937) 593-7335

D-367

YODRCH5B.GCD
REF:YODRCH5.ASC

L-2741-2



ORIGINAL STAMP IN GREEN

INDEXED ON MAP
4650 5P

2 WORKING DAYS

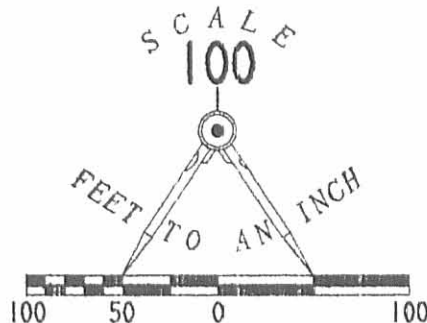
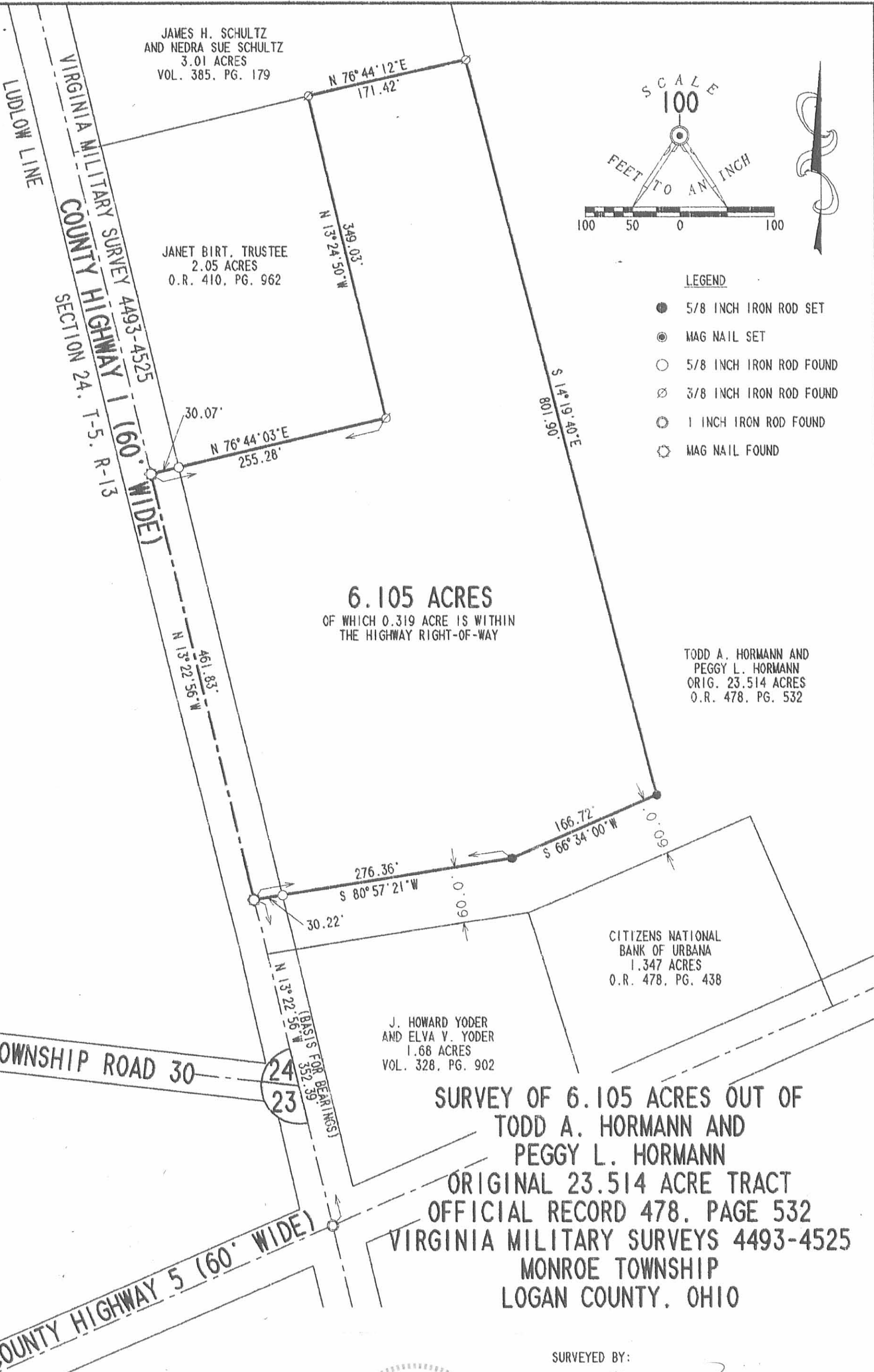


BEFORE YOU DIG



CALL TOLL FREE **800-362-2764**

OHIO UTILITIES PROTECTION SERVICE.



LEGEND

- 5/8 INCH IRON ROD SET
- ⊙ MAG NAIL SET
- 5/8 INCH IRON ROD FOUND
- ⊗ 3/8 INCH IRON ROD FOUND
- ⊙ 1 INCH IRON ROD FOUND
- ⊗ MAG NAIL FOUND

Yoder Description

December, 1969

Being situated in Monroe Township, Logan County, Ohio; and being a part of V.M.S. #4493-4525.

Beginning at an iron at the intersection of the center lines of County Road #1 (Ludlow Road) and County Road #5.

Thence with the center of County Road #1 N $20^{\circ}-00'W$ 292.4 feet to a point.

Thence N $74^{\circ}-15'E$ 278.9 feet to an iron, passing thru an iron at 30.1 feet.

Thence S $23^{\circ}-24'E$ 220.0 feet to a point in the center of County Road #5, passing thru a iron at 189.8 feet.

Thence with the center of County Road #5 S $59^{\circ}-51'W$ 295.8 feet to the place of beginning.

Containing 1.68 acres more or less. Being surveyed from a 99.50 acre tract.

Owen K. Shirk

Surveyor 4271

4650 UD

INDEXED ON MAP

REC'D 8-16-10 SMM/CLC

Lee Surveying and Mapping Co., Inc.

Land Surveys • Topography • Subdivisions • Construction Layout

117 N. Madriver St.
Bellefontaine OH 43311



Phone: (937) 593-7335
Fax: (937) 593-7444
surveys@lsminc.us

HORMANN 7.254 ACRES

Lying in Virginia Military Survey 4493-4525, Monroe Township, Logan County, Ohio.

Being out of the Todd A. Hormann and Peggy L. Hormann 23.514 acre tract as deeded and described in Official Record 478, Page 532 and all of the 1.347 acre tract as deeded and described in Official Record 867, Page 872 of the Logan County Records of Deeds and being more particularly described as follows:

Commencing on a 1 inch iron rod found on the west line of Virginia Military Survey 4493-4525 on the intersection of the center-lines of County Highway 1 and County Highway 5.

THENCE, with the west line of Virginia Military Survey 4493-4525, the Ludlow Line and the center-line of County Highway 1 (60 feet wide), N 13°-22'-56"W, a distance of 292.22 feet to a MAG nail found at the TRUE POINT OF BEGINNING.

THENCE, with the with the west line of Virginia Military Survey 4493-4525, the Ludlow Line and the center-line of County Highway 1, N 13°-22'-56"W, a distance of 52.15 feet to a MAG nail set.

THENCE, N 80°-57'-21"E, a distance of 276.27 feet to a 5/8 inch iron rod set, passing a 5/8 inch iron rod set at 30.09 feet.

THENCE, N 63°-36'-12"E, a distance of 133.55 feet to a 5/8 inch iron rod set.

THENCE, N 37°-37'-04"E, a distance of 252.39 feet to a 5/8 inch iron rod set.

THENCE, N 14°-49'-39"W, a distance of 190.61 feet to a 5/8 inch iron rod set.

THENCE, N 73°-34'-38"E, a distance of 296.13 feet to a 5/8 inch iron rod set.

THENCE, S 13°-34'-25"E, a distance of 277.43 feet to a 5/8 inch iron rod set.

THENCE, N 74°-41'-08"E, a distance of 109.63 feet to a 5/8 inch iron rod set.

THENCE, with the west line of the William Chad Levan 12.306 acre tract (O.R. 349, Pg. 476), S 15°-03'-21"E, a distance of 265.54 feet to a railroad spike found on the center-line of County Highway 5, passing a 5/8 inch iron rod found at 235.12 feet.

THENCE, with the center-line of County Highway 5 (60 feet wide), the following two courses:

Lee Surveying and Mapping Co., Inc.

Land Surveys • Topography • Subdivisions • Construction Layout

117 N. Madriver St.
Bellefontaine OH 43311



Phone: (937) 593-7335
Fax: (937) 593-7444
surveys@lsminc.us

S 66°-32'-57"W, a distance of 448.95 feet to a railroad spike found.

S 66°-33'-02"W, a distance of 281.59 feet to a railroad spike found.

THENCE, with the lines of the Sally S. Yoder 1.68 acre tract (O.R. 749, Pg. 674), the following two courses:

N 16°-46'-53"W, a distance of 219.70 feet to a 5/8 inch iron rod found, passing a 5/8 inch iron rod found at 30.16 feet.

S 80°-57'-21"W, a distance of 279.39 feet to the point of beginning, passing a 5/8 inch iron rod found at 248.82 feet.

Containing 7.254 acres, of which 0.539 acre is within the highway right-of-way.

Property is subject to any and all previous easements and rights-of-way of record.

The basis for bearings is the west line of Virginia Military Survey 4493-4525, being N 13°-22'-56"W, and all other bearings are from angles and distances measured in a field survey by Lee Surveying and Mapping Co., Inc. on August 12, 2010.



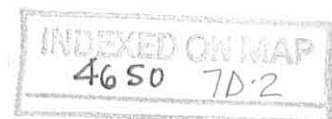
ORIGINAL STAMP IN GREEN

Description prepared by:

A handwritten signature in black ink that reads 'William K. Bruce'.

William K. Bruce
Professional Surveyor 7437
August 12, 2010

5014810



REVISED 8-16-10 SWY OR



2 WORKING DAYS
CALL TOLL FREE 800-362-2764
OHIO UTILITIES PROTECT OR SERV CE.

- LEGEND:
- ⊕ 1 INCH IRON ROD FOUND
 - ⊗ RAILROAD SPIKE FOUND
 - ⊙ MAG NAIL FOUND
 - MAG NAIL SET
 - 5/8 INCH IRON ROD FOUND
 - 5/8 INCH IRON ROD SET WITH PLASTIC I.D. CAP STAMPED "LSM 7437"

TODD A. HORMANN AND
PEGGY L. HORMANN
23,514 ACRES
O.R. 478, PG. 532

TODD A. HORMANN AND
PEGGY L. HORMANN
1,347 ACRES
O.R. 867, PG. 872

SALLY S. YODER
1.68 ACRES
O.R. 749, PG. 674

WILLIAM CHAD LEVAN
12,306 ACRES
O.R. 349, PG. 476

7.254 ACRES
OF WHICH 0.539 ACRE IS WITHIN
THE HIGHWAY RIGHT-OF-WAY

SURVEY OF 7.254 ACRES OUT OF THE
TODD A. HORMANN AND
PEGGY L. HORMANN
23,514 ACRE TRACT
OFFICIAL RECORD 478, PAGE 532
AND 1,347 ACRE TRACT
OFFICIAL RECORD 867, PAGE 872
VIRGINIA MILITARY SURVEY 4493-4525
MONROE TOWNSHIP
LOGAN COUNTY, OHIO

SURVEYED BY:

WILLIAM K. BRUCE
PROFESSIONAL SURVEYOR 7437
AUGUST 12, 2010

COPYRIGHT 2010 BY:
LEE SURVEYING & MAPPING CO., INC.
117 North Modriver Street
BELLEFONTAINE, OHIO 43311
(937) 593-7335
surveys@lsminc.us

KSS 00810 5014810 L-5014-3

