

SHARP SURVEY  
V.M.S. 10853, 8303-8485  
Monroe Township  
May 4, 1968

The following described real estate situated in Monroe Township, Logan County, Ohio and being part of Virginia Military Surveys 10853 and 8303-8485 and more particularly described as follows:

Beginning at an iron bar in the center of Monroe Township Road No.190 and in the east line of V.M.S. 10853, said iron bar also being in the west line of Velma Godwin's 41.00 acre tract; thence S.85° 21'W. 517.5 feet to an iron pin; thence N.30° 32'E. 900.4 feet to an iron bar, passing an iron bar at 30.59 feet; thence N.5° 07'W. 519.9 feet to an iron bar in the south line of Richard Levan's 43.10 acre tract; thence with said Levan's south line S.83° 56'E. 743.3 feet to a post at the southeast corner of said tract and in the west line of Velma Godwin's 27.91 acre tract; thence with said west line S.24° 13'E. 61.8 feet to a post in the west line of said Godwin's 41.00 acre tract and in the east line of said V.M.S. 10853; thence with said Godwin's west line S.30° 37'W. 653.4 feet; thence with said line S.30° 32'W. 643.5 feet to the place of beginning.

Containing 15.60 acres more or less of which 11.90 acres are in V.M.S. 10853 and 3.70 acres are in V.M.S. 8303-8485.

INDEXED ON MAP  
4229 1D

RICHARD LEVAN  
43.10 AC.

S. 83° 56' E.  
743.3'

IRON  
BAR

N. 10° 05' N.  
519.9'

Post

S. 24° 13' E.  
61.8'

Post

15.60 AC.

IRON  
BAR

S. 65° 37' W.  
653.4'

VELMA GODWIN  
41.00 AC.

N. 30° 32' E.  
900.4'

S. 64° 35' W.  
517.5'

IRON  
BAR

IRON  
PIN

S. 85° 21' W.  
517.5'

T.R. 190

INDEXED ON MAP  
4229 IP

SHARP SURVEY

V.M.S. 10853 & 8303-8485

MONROE TOWNSHIP

MAY 4, 1968

DAN L. DODSON

REG. SURVEYOR 4270

BELLEFONTAINE, OHIO

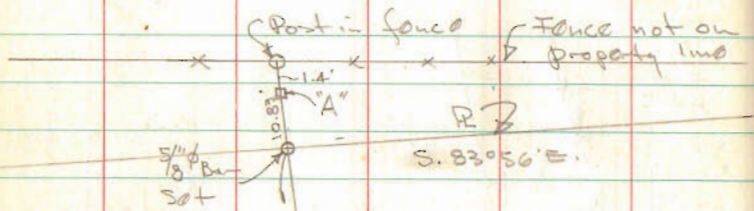
SHARP to Wise

LIEB SURVEY

Monroo Twp

U.M.S. 10853 & 8203-8485

See pg. 18 this book

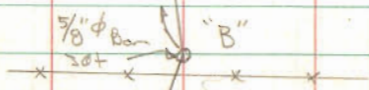


A=Hubs on Random line

519.1'  
N 5.007° W

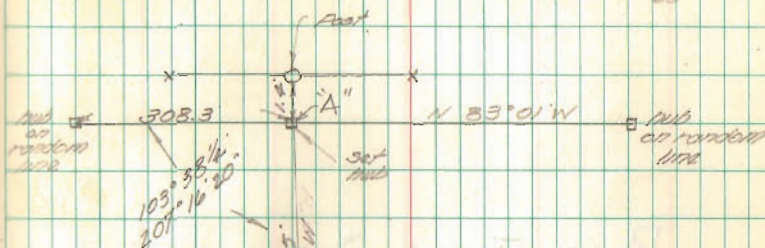
ANGLE REMOVED

5/4/68

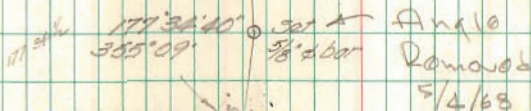


INDEXED ON MAP  
4229

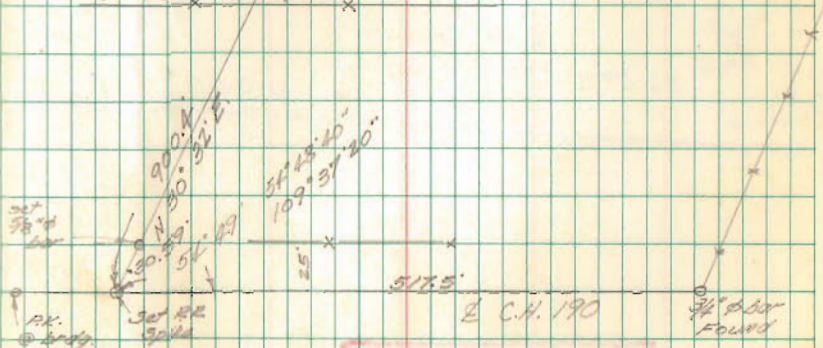
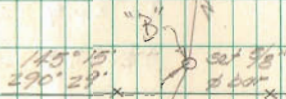
Station  
A-15  
4-20-68  
60'



15.60 Ac.



Angle  
Removed  
5/4/68



5135'  
E C.H. 190

INDEXED ON MAP  
4229