

Continued.

7/5
 C. A. Holsop
 J. H. Postup
 F. Water
 R. Phillips
 E. Smith
 W. Campbell
 242

See pg 56
 500 pg

31+79.7

Van bar Sta 582 Road 29
 E of Road

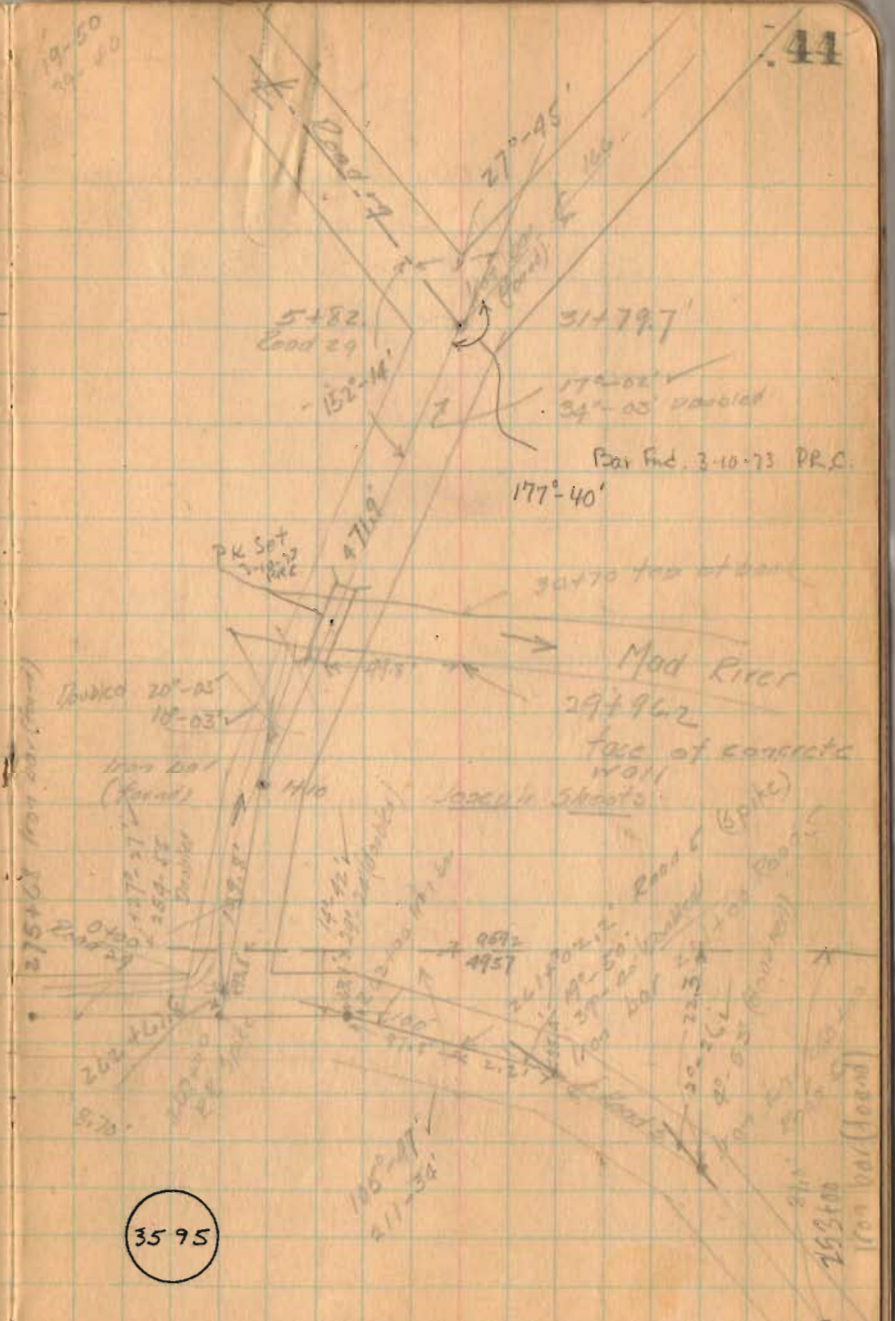
29+96.2

E face of wall W side Road
 29+96.2

26+71.7

spike & Road 5 of 26+122
 Sta

26+100



3595

Rd 29 between
Rd 5 & Rd 166

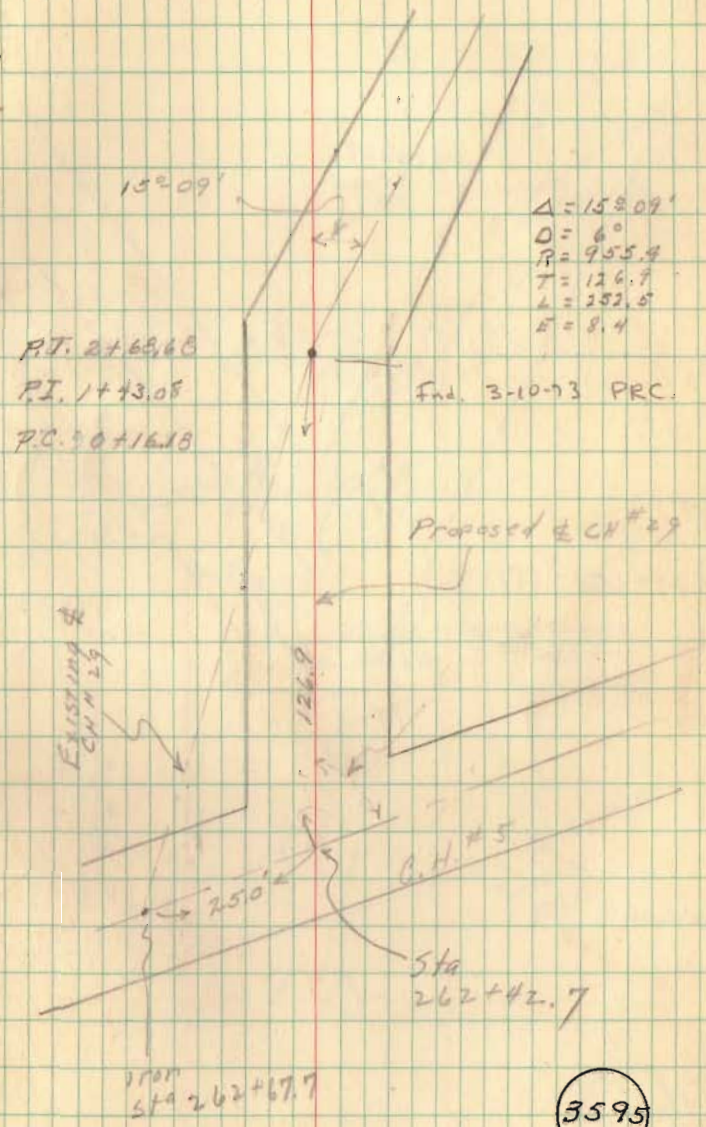
Fd. R.R. Spike at 2+68.68
set 3/4" dia - ben in place
of spike

P.T. 2+68.68 Hubs set

7-9-47
Cool & Rain

Gore
Shirk
Mason
Mitche
Wright

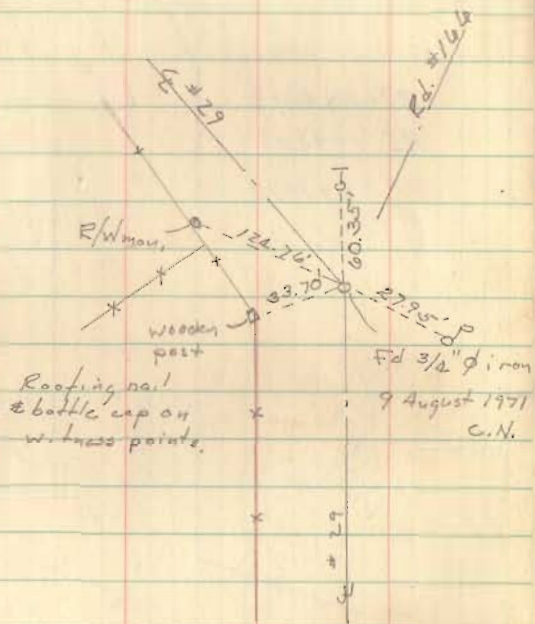
Road #5 & 29 at sine



3595

Rd 29 between
Rd 5 + Rd 166

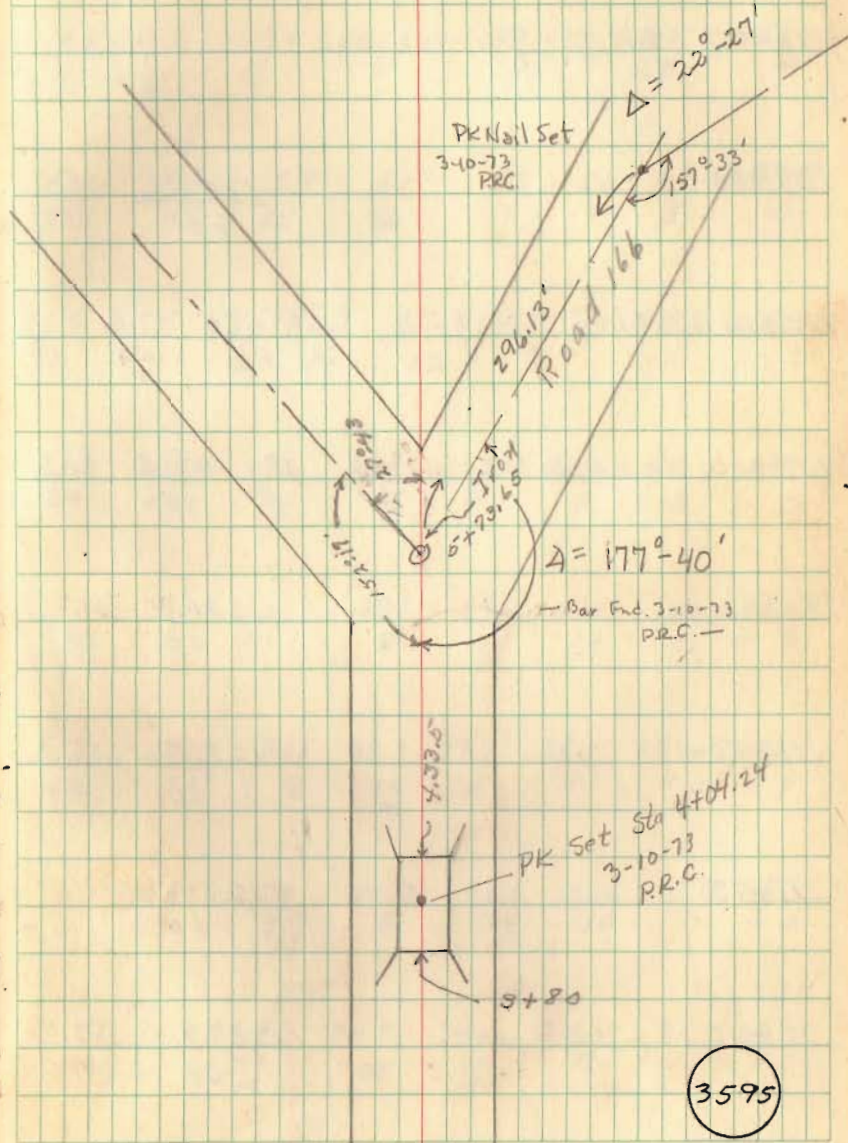
5+73.65



4+00

573.65
488.5
140.15

40



3595