

Left

Parks Survey
Monroe Township
September 2, 1963

The following described real estate situated in Monroe Township, Logan County, Ohio and being part of Virginia Military Survey 4570 and more particularly described as follows;

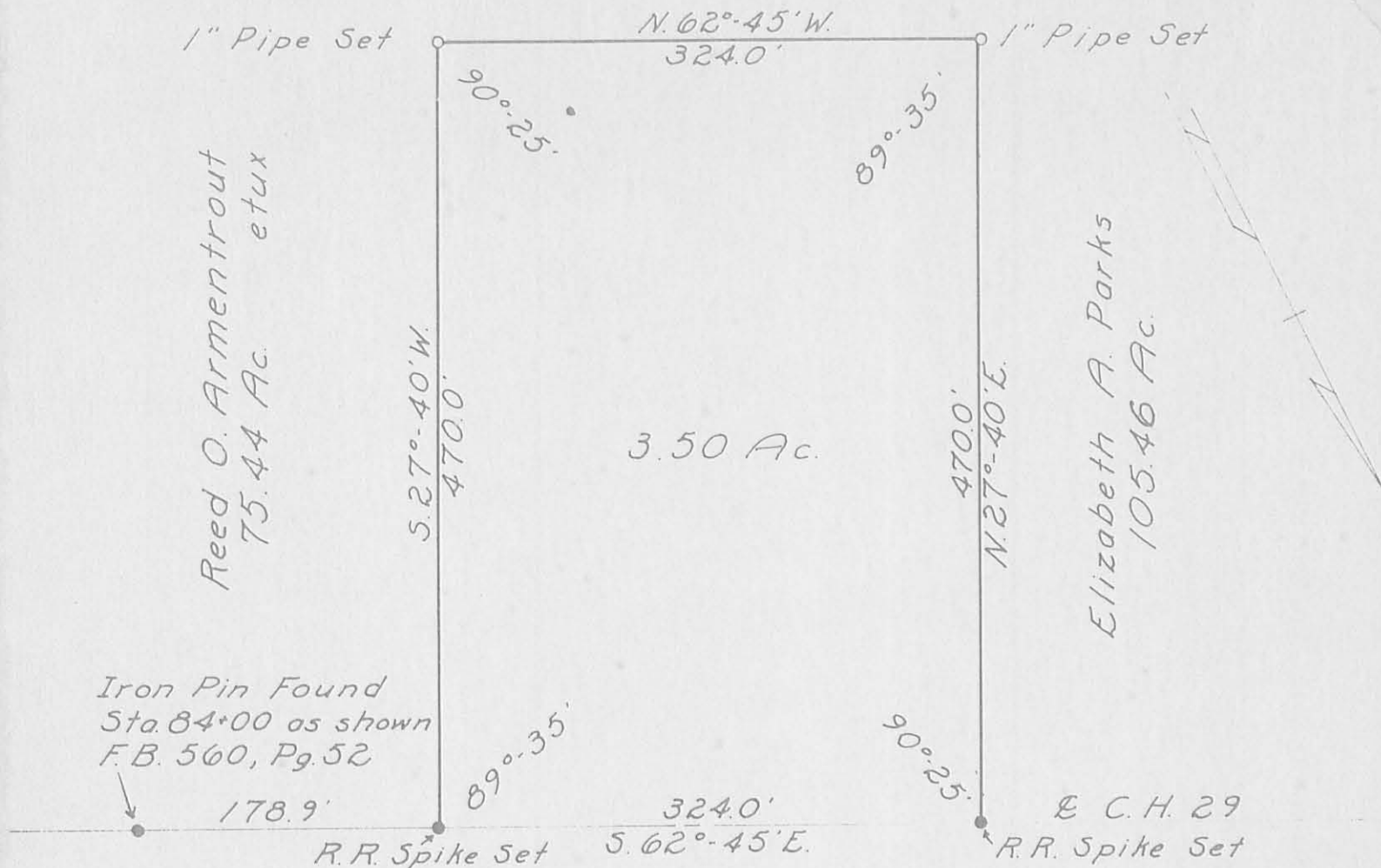
Commencing at an iron pin in the centerline of C.H. 29 at Sta. 84+00 as shown in Logan County Engineer's Field Book 560, page 52; thence with the centerline of C.H. 29 N. 62°-45' W. 178.9 feet to a spike at the northwest corner of Reed O. Armentrout's 75.44 acre tract and the northeast corner of Elizabeth A. Parks' 105.46 acre tract, said spike being the beginning point of this description; thence with the property line between Armentrout and Parks S. 27°-40' W. 470.0 feet to an iron pipe; thence N. 62°-45' W. 324.0 feet to an iron pipe; thence N. 27°-40' E. 470.0 feet to a spike in the centerline of C.H. 29; thence with the centerline of C.H. 29 S. 62°-45' E. 324.0 feet to the place of beginning.

Containing 3.50 acres more or less.

Surveyed by: Donald L. Lewis
Surveyor-in-Training

Approved by: _____
Registered Surveyor 4270

3579 ID



PARKS SURVEY

VIRGINIA MILITARY SURVEY 4570

MONROE TOWNSHIP

September 2, 1963

Scale-1"=100'

Surveyed by: Donald L. Lewis
Surveyor-in-Training

Approved by: Sam R. [Signature]
Registered Surveyor 4270

3579 IP

INDEXED ON MAP

12-23-15

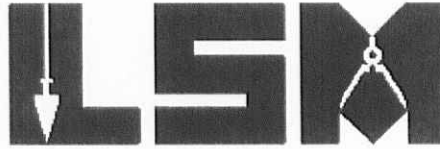
Lee Surveying and Mapping Co., Inc.



APPROVED

Land Surveys • Topography • Subdivisions • Construction Layout

117 N. Madriver St.
Bellefontaine OH 43311



Phone: (937) 593-7335
Fax: (937) 593-7444
surveys@lsminc.us

MILLER 53.317 ACRES

Lying in Virginia Military Surveys 4676 and 4970, Monroe Township, Logan County, Ohio.

Being out of the Don K. Miller and Virginia L. Miller 46 acre tract and 46 acre tract as deeded and described in Volume 294, Page 361, Tract 1 and Tract 2 and all of the 3.50 acre tract as deeded and described in Volume 301, Page 662 of the Logan County Records of Deeds and being more particularly described as follows:

Beginning on a 5/8 inch iron rod found on the westerly line of Virginia Military Survey 4570 and the easterly line of Virginia Military Survey 4676 on the intersection of the center-lines of County Highway 29, Township Road 29 and County Highway 146.

THENCE, with the center-line of Township Road 29 (50 feet wide), S 67°-00'-00"E, a distance of 167.76 feet to a railroad spike found.

THENCE, with the west line of the Michael M. Pelger 3.52 acre tract (O.R. 636, Pg. 725), S 17°-01'-36"W, a distance of 477.49 feet to a 5/8 inch iron rod found, passing a 5/8 inch iron rod set at 25.14 feet.

THENCE, with the south lines of the said 3.52 acre tract, the Ronald K. Wenger original 5.09 acre tract (O.R. 350, Pg. 211) and the Doug A. Craig 1.888 acre tract (O.R. 378, Pg. 396), S 65°-11'-43"E, a distance of 747.07 feet to a 1 inch iron bar found.

THENCE, with the east line of the said 1.888 acre tract, N 23°-01'-35"E, a distance of 498.43 feet to a railroad spike found on the center-line of Township Road 29, passing a 5/8 inch iron rod found at 478.28 feet.

THENCE, with the center-line of Township Road 29, S 67°-00'-00"E, a distance of 859.49 feet to a railroad spike found.

THENCE, with the west lines of the Michael A. Wilber 0.30 acre tract and 10.00 acre tract (O.R. 862, Pg. 907, Tract II and Tract I), S 23°-30'-27"W, a distance of 1368.48 feet to a 5/8 inch iron rod set, passing a 5/8 inch iron rod set at 25.00 feet.

INDEXED ON MAP

3579 2D-1

Lee Surveying and Mapping Co., Inc.

Land Surveys • Topography • Subdivisions • Construction Layout

117 N. Madriver St.
Bellefontaine OH 43311



Phone: (937) 593-7335
Fax: (937) 593-7444
surveys@lsminc.us

THENCE, N 63°-41'-06"W, a distance of 387.20 feet to a 5/8 inch iron rod set.

THENCE, N 40°-02'-18"W, a distance of 186.14 feet to a 5/8 inch iron rod set.

THENCE, N 78°-30'-04"W, a distance of 138.92 feet to a 5/8 inch iron rod set.

THENCE, N 01°-50'-32"W, a distance of 359.36 feet to a 5/8 inch iron rod set.

THENCE, S 88°-35'-29"W, a distance of 165.97 feet to a 5/8 inch iron rod set.

THENCE, S 12°-25'-41"W, a distance of 544.86 feet to a 5/8 inch iron rod set.

THENCE, S 07°-04'-57"E, a distance of 89.16 feet to a 5/8 inch iron rod set.

THENCE, S 35°-56'-59"E, a distance of 126.63 feet to a 5/8 inch iron rod set.

THENCE, S 01°-14'-00"E, a distance of 69.32 feet to a 5/8 inch iron rod set.

THENCE, S 75°-04'-55"W, a distance of 69.52 feet to a 5/8 inch iron rod set.

THENCE, N 73°-07'-25"W, a distance of 190.18 feet to a 5/8 inch iron rod set.

THENCE, N 87°-27'-22"W, a distance of 220.96 feet to a 5/8 inch iron rod set.

THENCE, N 00°-49'-57"W, a distance of 244.29 feet to a 5/8 inch iron rod set.

THENCE, N 10°-32'-43"W, a distance of 100.20 feet to a 5/8 inch iron rod set.

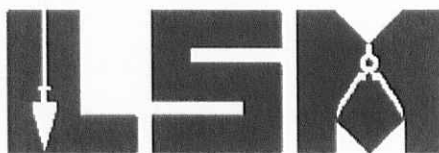
THENCE, N 05°-34'-39"E, a distance of 266.61 feet to a 5/8 inch iron rod set.

INDEXED ON MAP
3579 2D-2

Lee Surveying and Mapping Co., Inc.

Land Surveys • Topography • Subdivisions • Construction Layout

117 N. Madriver St.
Bellefontaine OH 43311



Phone: (937) 593-7335
Fax: (937) 593-7444
surveys@lsminc.us

THENCE, N 10°-50'-09"E, a distance of 193.46 feet to a 5/8 inch iron rod set.

THENCE, N 11°-38'-40"W, a distance of 176.94 feet to a 5/8 inch iron rod set.

THENCE, N 72°-26'-20"W, a distance of 332.96 feet to a 5/8 inch iron rod set.

THENCE, N 27°-20'-22"E, a distance of 264.56 feet to a 5/8 inch iron rod set.

THENCE, N 60°-34'-46"W, a distance of 235.99 feet to a 5/8 inch iron rod set.

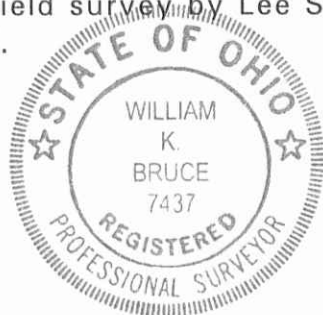
THENCE, with the east line of the Gary Lee Ryan 0.846 acre tract (O.R. 1009, Pg. 423, Parcel Three), N 22°-31'-36"E, a distance of 758.09 feet to a MAG nail set on the center-line of County Highway 29, passing 5/8 inch iron rods found at 21.24 feet and 732.88 feet.

THENCE, with the center-line of County Highway 29 (50 feet wide), S 67°-07'-27"E, a distance of 275.80 feet to the point of beginning.

Containing 53.317 acres, of which 0.748 acre is within the highway right-of-way. There are 1.425 acres within Virginia Military Survey 4676 and 51.892 acres within Virginia Military Survey 4570.

Property is subject to any and all previous easements and rights-of-way of record.

The basis for bearings is the center-line of Township Road 29, being S 67°-00'-00"E, and all other bearings are from angles and distances measured in a field survey by Lee Surveying and Mapping Co., Inc. on December 17, 2015.

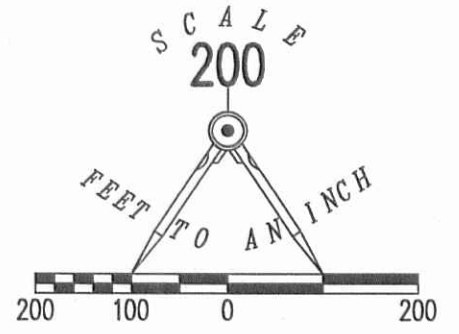


Description prepared by:

William K. Bruce
Professional Surveyor 7437
December 18, 2015

INDEXED ON MAP
3579 2D-3

60361115



LEGEND:

- ⊗ RAILROAD SPIKE FOUND
- MAG NAIL SET
- 1 INCH IRON BAR FOUND
- 5/8 INCH IRON ROD FOUND
- 5/8 INCH IRON ROD SET WITH PLASTIC I.D. CAP STAMPED "LSM 7437"



SURVEY OF 53.317 ACRES OUT OF THE DON K. MILLER AND VIRGINIA L. MILLER 46 ACRE TRACT AND 46 ACRE TRACT VOLUME 294, PAGE 361 TRACT 1 AND TRACT 2 AND ALL OF THE 3.50 ACRE TRACT VOLUME 301, PAGE 662 VIRGINIA MILITARY SURVEYS 4676 & 4970 MONROE TOWNSHIP LOGAN COUNTY, OHIO

SURVEYED BY:
William K. Bruce
WILLIAM K. BRUCE
PROFESSIONAL SURVEYOR 7437
DECEMBER 17, 2015



COPYRIGHT 2015 BY:
LEE SURVEYING & MAPPING CO.
117 North Madriver Street, INC.
BELLEFONTAINE, OHIO 43311
(937) 593-7335
WWW.LSMINC.US
surveys@lsminc.us
KSS D1115 60361115 L-6036-2

INDEXED ON MAP
3579 2P