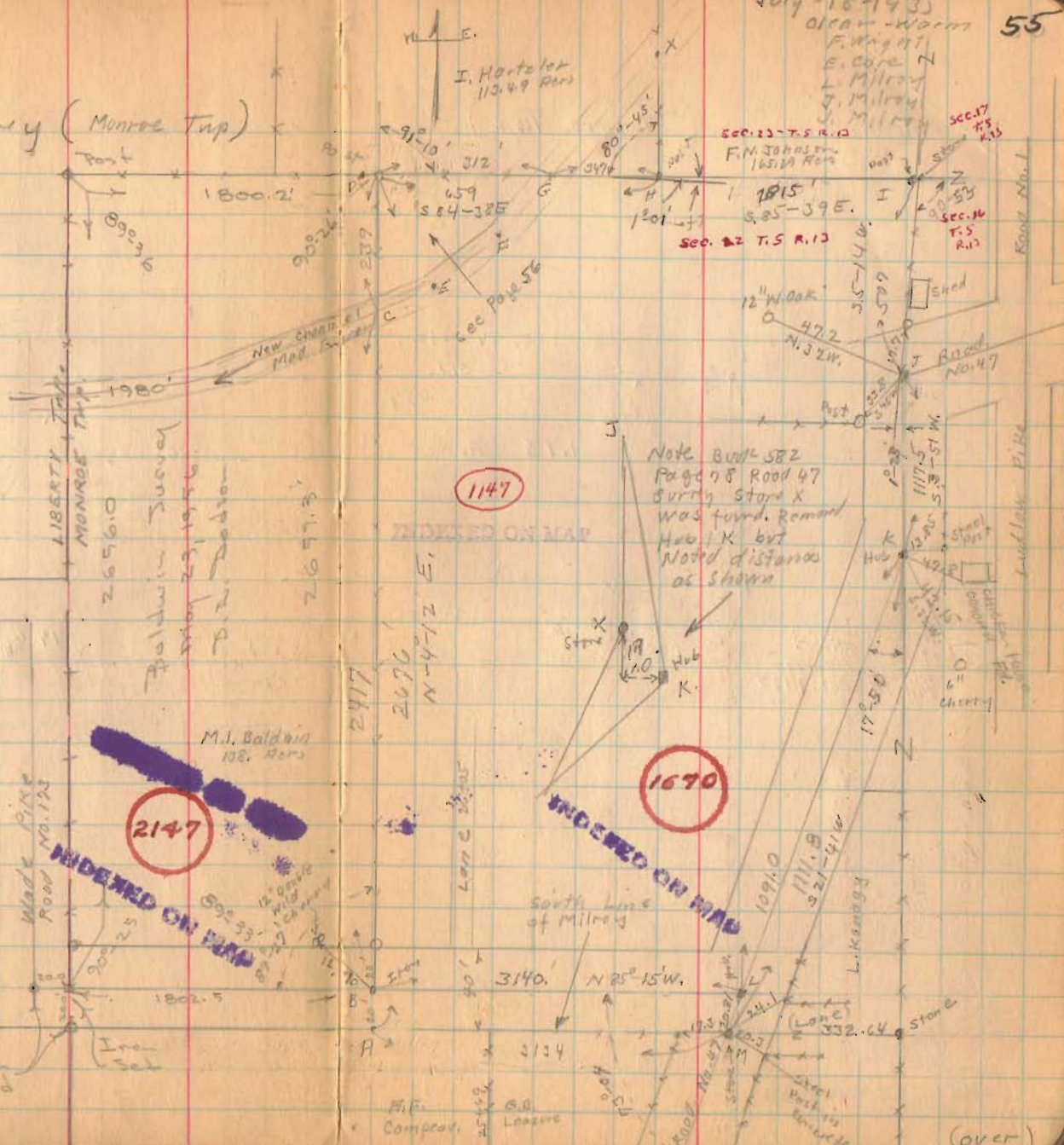


Milroy Survey (Monroe Twp)

See Book 226 for Wade Pike
See Book a Page 210
See Map with Road 173



1670

INDEXED ON MAP

2147

1147

1670

(over)

BALDWIN SURVEY

SEC. 22 T-5 R-13

MONROE TOWNSHIP

MAY 23, 1956

31

The following described real estate situated in Monroe Township, Logan County, Ohio and being part of the northwest $\frac{1}{4}$ of Section 22, T-5, R-13 of the Between the Miami Rivers Survey and more particularly described as follows:

Beginning at an iron pin in the south line of County Highway No. 173 at the southwest corner of said northwest $\frac{1}{4}$ section as shown on page 55 of the Logan County Engineers' Field Book 584; thence with the west line of said section 22, said line also being the west line of Monroe Township, N. $7^{\circ}-05'$ E. 2676.0 feet to a post at the northwest corner of said section 22, passing an iron in the center of C.H. 173 at 20.0 feet and the center of Mad River at 2000.0 feet; thence with the north line of said section 22 S. $82^{\circ}-31'$ E. 1800.2 feet to a post at the northwest corner of Isaiah Hartzlers' 1.13 acre tract; thence with the west line of said 1.13 acre tract and the west line of John Milroys' 102.98 acre tract S. $7^{\circ}-03'$ W. 2677.3 feet to the south line of said C.H. 173, passing the center of Mad River at 253.0 feet and an iron pin in the center of C.H. 173 at 2657.3 feet; thence with the south line of said C.H. 173 N. $82^{\circ}-30'$ W. 1802.5 feet to the place of beginning.

Containing 110.69 acres more or less.

on Plat
21 ~~24~~ ⁴⁷

ID

INDEXED ON MAP

REC'D B-14-09 SWJ OK

Lee Surveying and Mapping Co., Inc.

Land Surveys • Topography • Subdivisions • Construction Layout

117 N. Madriver St.
Bellefontaine OH 43311



Phone: (937) 593-7335
Fax: (937) 593-7444
surveys@lsminc.us

McCLURE 21.516 ACRES

Lying in Section 22, Town 5, Range 13, Monroe Township, Logan County, Ohio.

Being out of the Sylvia R. McClure as Trustee of the McClure Family Trust, 110.69 acre tract as deeded and described in Official Record 287, Page 129 of the Logan County Records of Deeds and being more particularly described as follows:

Beginning on a 5/8 inch iron rod set in the base of a 10 inch wood corner post found on the northwest corner of Section 22.

THENCE, with the north line of Section 22 and the south lines of the Joyce K. Daniels 99.18 acre tract (O.R. 904, Pg. 622) and the Roy L. Bragg 108.763 acre tract (O.R. 947, Pg. 911, Tract 1), S 85°-08'-56"E, a distance of 1800.20 feet to a 5/8 inch iron rod set.

THENCE, with the west lines of the Roy L. Bragg 1.13 acre tract (O.R. 947, Pg. 911, Tract 2) and the Robert John Milroy 102.98 acre tract (O.R. 274, Pg. 521), S 04°-29'-09"W, a distance of 245.00 feet to a point in the center-line of Mad River, passing a 5/8 inch iron rod set at 200.00 feet.

THENCE, with the center-line of Mad River, the following three courses:

S 72°-43'-05"W, a distance of 449.51 feet to a point, referenced by a 5/8 inch iron rod set bearing N 16°-53'-15"W, a distance of 45.00 feet.

S 80°-41'-19"W, a distance of 986.80 feet to a point, referenced by a 5/8 inch iron rod set bearing N 09°-17'-18"W, a distance of 45.00 feet.

S 89°-34'-43"W, a distance of 426.50 feet to a point.

THENCE, with the east line of the Robert Simon Meister 72 acre tract (O.R. 269, Pg. 232), N 04°-31'-55"E, a distance of 695.00 feet to the point of beginning, passing a 5/8 inch iron rod set at 60.00 feet.

Containing 21.516 acres.

This parcel is to be attached to an adjoining tract of land and is not to be used as a separate and independent parcel.

The basis for bearings is the north line of Section 22, being S 85°-08'-56"E, and all other bearings are from angles and distances measured in a field survey by Lee Surveying and Mapping Co., Inc. on August 6, 2009.

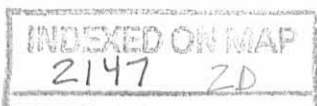


ORIGINAL STAMP IN GREEN

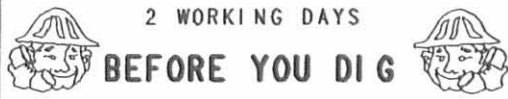
Description prepared by:

William K. Bruce
Professional Surveyor 7437
August 13, 2009

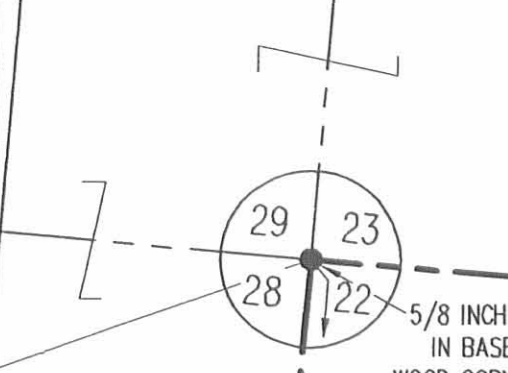
4832089



REC'D 8-14-09 SJK/OK



CALL TOLL FREE 800-362-2764
OHIO UTILITIES PROTECTION SERVICE



ROBERT SIMON MEISTER
72 ACRES
O.R. 269, PG. 232

LIBERTY TOWNSHIP
MONROE TOWNSHIP

JOYCE K. DANIELS
99.18 ACRES
O.R. 904, PG. 622

21.516 ACRES

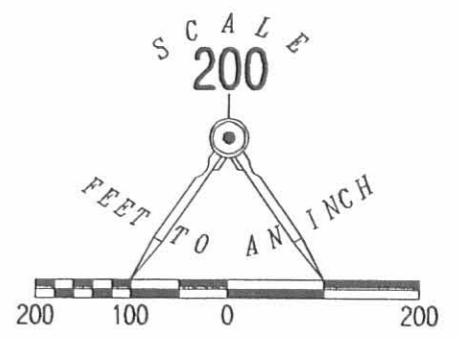
SYLVIA R. McCLURE AS TRUSTEE
OF THE McCLURE FAMILY TRUST,
A REVOCABLE LIVING TRUST AND
TO SUCCESSOR TRUSTEES
110.69 ACRES
O.R. 287, PG. 129

ROY L. BRAGG
108.763 ACRES
O.R. 947, PG. 911
TRACT 1

ROY L. BRAGG
1.13 ACRES
O.R. 947, PG. 911
TRACT 2

ROBERT JOHN MILROY
102.98 ACRES
O.R. 274, PG. 521

- LEGEND:
- ⊗ HARROW TOOTH FOUND
 - 5/8 INCH IRON ROD FOUND
 - 5/8 INCH IRON ROD SET WITH PLASTIC I.D. CAP STAMPED "LSM 7437"



(BASIS FOR BEARINGS)
S 85°08'56" E
1800.20'

S 85°08'56" E
3472.27'

S 89°34'43" W
426.50'

N 09°17'18" W
45.00'

S 80°41'19" W
986.80'

N 16°53'15" W
45.00'

S 72°43'05" W
449.51'

S 04°29'09" W
245.00'

45.00'

S 04°29'09" W
2413.11'

SURVEY OF 21.516 ACRES OUT OF THE
SYLVIA R. McCLURE AS TRUSTEE
OF THE McCLURE FAMILY TRUST,
110.69 ACRE TRACT
OFFICIAL RECORD 287, PAGE 129
SECTION 22, TOWN 5, RANGE 13
MONROE TOWNSHIP
LOGAN COUNTY, OHIO

SURVEYED BY:

William K. Bruce
WILLIAM K. BRUCE
PROFESSIONAL SURVEYOR 7437
AUGUST 6, 2009



ORIGINAL STAMP IN GREEN

COPYRIGHT 2009 BY:
LEE SURVEYING & MAPPING CO., INC.
117 North Madriver Street
BELLEFONTAINE, OHIO 43311
(937) 593-7335
surveys@lsminc.us
KSS D0809 4832089 L-4832-3

NOTE:
THIS PARCEL IS TO BE ATTACHED TO AN ADJOINING TRACT OF LAND
AND IS NOT TO BE USED AS A SEPARATE AND INDEPENDENT PARCEL.

INDEXED ON MAP
2147 2P

Baldwin Survey
 Monroe Twp.
 Sec. 22, T-5, R-13

See Co. Eng. F.B. # 584 79 55

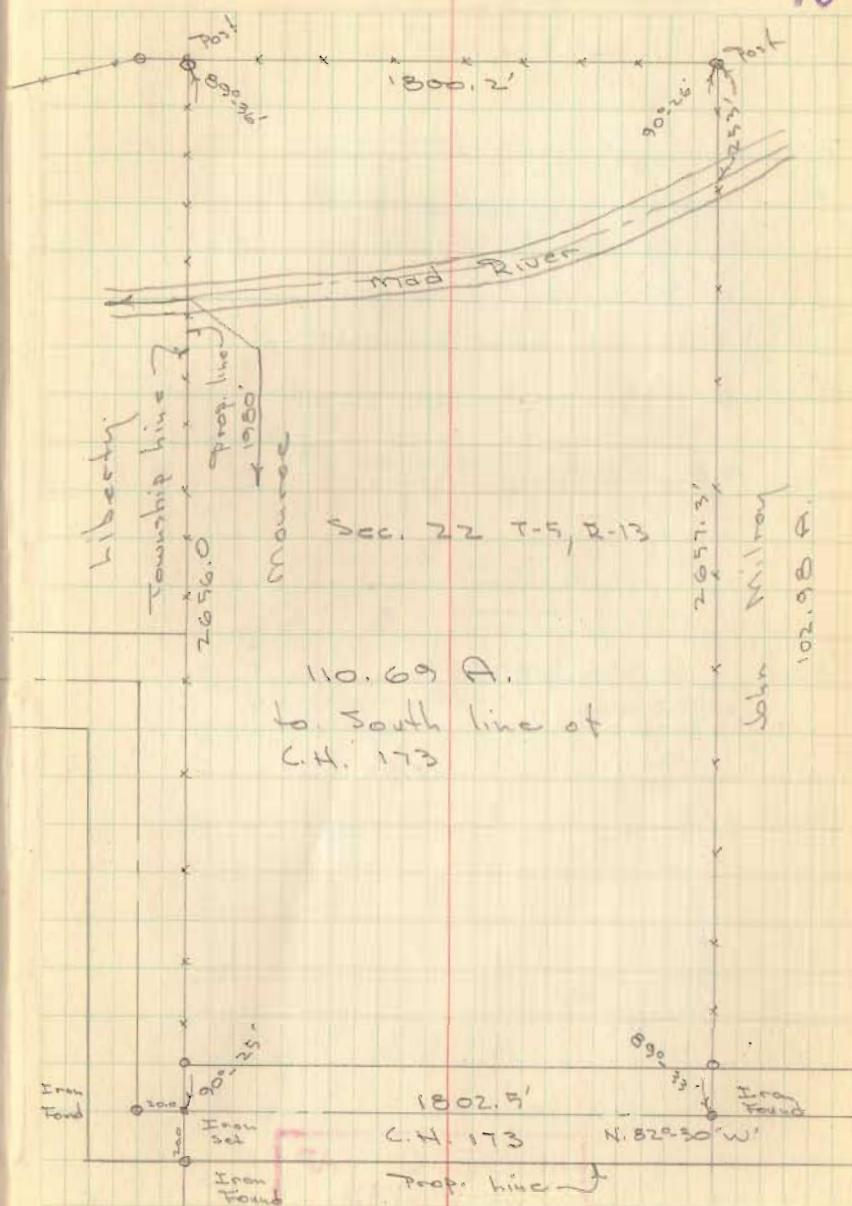
C.H. # 173 - 40' wide

INDEXED ON MAP
 2147

Dodson
 McGinnis
 Grobson

May 27, 1956

70



21

Baldwin Survey

Monroe Twp

May 23, 1956

89-36
 90-26
 90-25
 89-33

 358-120

Bk 2 pg 10

INDEXED ON MAP
 2147

16

