

REC'D 1-28-04 SUM

# Lee Surveying and Mapping Co., Inc.

Land Surveys • Topography • Subdivisions • Construction Layout

117 N. Madriver St.  
Bellefontaine OH 43311



Phone: (937) 593-7335  
Fax: (937) 593-7444

## TRACT A-1 5.631 ACRES

Lying in Virginia Military Survey 4493-4525, Monroe Township, Logan County, Ohio.

Being out of the Countrytyme Grove City Ltd. 53.602 acre tract as deeded and described on Official Record 691, Page 702 of the Logan County Records of Deeds and being more particularly described as follows:

Beginning at a 3/4 inch iron rod found in a monument box at the intersection of center-lines of County Highway 5 (60 feet wide) and Township Road 165 (60 feet wide).

THENCE, with the center-line of County Highway 5, N 18°-24'-41"E, a distance of 142.79 feet to a MAG nail found.

THENCE, with the north line of the Neil D. Yoder and Diane Sue Yoder 65.595 acre tract (O.R. 520, Pg. 465), N 40°-36'-09"W, a distance of 944.84 feet to a 5/8 inch iron rod set at the TRUE POINT OF BEGINNING, passing a 5/8 inch iron rod found at 34.78 feet.

THENCE, with the north line of the said 65.595 acre tract and the north line of the Jessalyn I. Strayer original 58.554 acre tract (O.R. 178, Pg. 463 Parcel Two), N 40°-36'-09"W, a distance of 1054.30 feet to a 5/8 inch iron rod set.

THENCE, S 71°-35'-19"E, a distance of 903.85 feet to a 5/8 inch iron rod set.

THENCE, S 18°-24'-41"W, a distance of 542.79 feet to the point of beginning, passing a 5/8 inch iron rod set at 270.00 feet.

Containing 5.631 acres.

The basis for bearings is the center-line of County Highway 5 being S 18°-24'-41"W, and all other bearings are from angles and distances measured in a field survey by Lee Surveying and Mapping Co., Inc. on December 19, 2003.

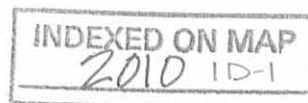
Description prepared by:



ORIGINAL STAMP IN GREEN

*Jeffrey I. Lee*  
Jeffrey I. Lee  
Professional Surveyor 6359  
January 20, 2003

L-3441



REC'D 1-28-04 SML/OK

# Lee Surveying and Mapping Co., Inc.

Land Surveys • Topography • Subdivisions • Construction Layout

117 N. Madriver St.  
Bellefontaine OH 43311



Phone: (937) 593-7335  
Fax: (937) 593-7444

## TRACT B-2 5.493 ACRES

Lying in Virginia Military Survey 4493-4525, Monroe Township, Logan County, Ohio.

Being out of the Countrytyme Grove City Ltd. 53.602 acre tract as deeded and described on Official Record 691, Page 702 of the Logan County Records of Deeds and being more particularly described as follows:

Beginning at a 3/4 inch iron rod found in a monument box at the intersection of center-lines of County Highway 5 (60 feet wide) and Township Road 165 (60 feet wide).

THENCE, with the center-line of County Highway 5, N 18°-24'-41"E, a distance of 142.79 feet to a MAG nail found.

THENCE, with the north line of the Neil D. Yoder and Diane Sue Yoder 65.595 acre tract (O.R. 520, Pg. 465), N 40°-36'-09"W, a distance of 944.84 feet to a 5/8 inch iron rod set, passing a 5/8 inch rod found at 34.78 feet.

THENCE, N 18°-24'-41"E, a distance of 542.79 feet to a 5/8 inch iron rod set at THE TRUE POINT OF BEGINNING.

THENCE, N 71°-35'-19"W, a distance of 903.85 feet to a 5/8 inch iron rod set.

THENCE, N 40°-36'-09"W, a distance of 104.25 feet to a railroad tie post found.

THENCE, with the south line of Virginia Military Survey 10583 and the Kevin J. Forrest and Peggy J. Forrest 35.28 acre tract (O.R. 153, Pg.612), N 66°-58'-21"E, a distance of 326.87 feet to a 5/8 inch iron rod set.

THENCE, S 71°-35'-19"E, a distance of 748.18 feet to a 5/8 inch iron rod set.

THENCE, S 18°-24'-41"W, a distance of 270.00 feet to the point of beginning.

Containing 5.493 acres.

The basis for bearings is the center-line of County Highway 5 being S 18°-24'-41"W, and all other bearings are from angles and distances measured in a field survey by Lee Surveying and Mapping Co., Inc. on December 19, 2003.

Description prepared by:



ORIGINAL STAMP IN GREEN

*Jeffrey I. Lee*  
Jeffrey I. Lee  
Professional Surveyor 6359  
January 20, 2003

L-3441



REV'D 1-28-04 SML/OK  
**Lee Surveying and Mapping Co., Inc.**

Land Surveys • Topography • Subdivisions • Construction Layout

117 N. Madriver St.  
Bellefontaine OH 43311



Phone: (937) 593-7335  
Fax: (937) 593-7444

**TRACT CD-12  
5.484 ACRES**

Lying in Virginia Military Survey 4493-4525, Monroe Township, Logan County, Ohio.

Being out of the Countrytyme Grove City Ltd. 53.602 acre tract as deeded and described on Official Record 691, Page 702 of the Logan County Records of Deeds and being more particularly described as follows:

Beginning at a 3/4 inch iron rod found in a monument box at the intersection of center-lines of County Highway 5 (60 feet wide) and Township Road 165 (60 feet wide).

THENCE, with the center-line of County Highway 5, N 18°-24'-41"E, a distance of 142.79 feet to a MAG nail found.

THENCE, with the north line of the Neil D. Yoder and Diane Sue Yoder 65.595 acre tract (O.R. 520, Pg. 465), N 40°-36'-09"W, a distance of 944.84 feet to a 5/8 inch iron rod set, passing a 5/8 inch iron rod found at 34.78 feet.

THENCE, N 18°-24'-41"E, a distance of 812.79 feet to a 5/8 inch iron rod set at THE TRUE POINT OF BEGINNING.

THENCE, N 71°-35'-19"W, a distance 748.18 feet to a 5/8 inch iron rod set.

THENCE, with the south lines of Virginia Military Survey 10853, Virginia Military Survey 12099 and the Kevin J. Forrest and Peggy J. Forrest 35.28 acre tract (O.R. 153, Pg.612) and the Thomas W. Godwin and C. Joan Godwin original 189.963 acre tract (O.R. 92, Pg. 145), N 66°-58'-21"E, a distance of 815.92 feet to a point, passing a 5/8 inch iron rod set at 407.96 feet.

THENCE, S 71°-35'-19"E, a distance of 136.51 feet to a 5/8 inch iron rod set, passing a 5/8 inch iron rod set at a distance of 7.72 feet.

THENCE, S 18°-24'-41"W, a distance of 540.00 feet to the point of beginning.

Containing 5.484 acres.

The basis for bearings is the center-line of County Highway 5 being S 18°-24'-41"W, and all other bearings are from angles and distances measured in a field survey by Lee Surveying and Mapping Co., Inc. on December 19, 2003.



ORIGINAL STAMP IN GREEN

Description prepared by:

A handwritten signature in black ink, appearing to read 'J. Lee'.

Jeffrey I. Lee  
Professional Surveyor 6359  
January 20, 2003

L-3441



REC'D 1-28-04 SMY OK  
**Lee Surveying and Mapping Co., Inc.**

Land Surveys • Topography • Subdivisions • Construction Layout

117 N. Madriver St.  
Bellefontaine OH 43311



Phone: (937) 593-7335  
Fax: (937) 593-7444

**TRACT E-5  
1.946 ACRES**

Lying in Virginia Military Survey 4493-4525, Monroe Township, Logan County, Ohio.

Being out of the Countrytyme Grove City Ltd. 53.602 acre tract as deeded and described on Official Record 691, Page 702 of the Logan County Records of Deeds and being more particularly described as follows:

Beginning at a 3/4 inch iron rod found in a monument box at the intersection of center-lines of County Highway 5 (60 feet wide) and Township Road 165 (60 feet wide).

THENCE, with the center-line of County Highway 5, N 18°-24'-41"E, a distance of 2252.01 feet to a MAG nail found.

THENCE, with the south line of the John M. Kauffman 1.256 acre tract (O.R. 623, Pg. 526), N 65°-27'-21"W, a distance of 158.28 feet to a 5/8 inch iron rod found at THE TRUE POINT OF BEGINNING, passing a 5/8 inch iron rod found at 30.17 feet.

THENCE, N 65°-27'-21"W, a distance of 416.17 feet to a 5/8 inch iron rod set.

THENCE, with the south line of Virginia Military Survey 12099 and the Thomas W. Godwin and C. Joan Godwin original 189.963 acre tract (O.R. 92, Pg. 145), N 66°-58'-21"E, a distance of 551.84 feet to a 5/8 inch iron rod found.

THENCE, with the west line of the said 1.256 acre tract, S 18°-23'-55"W, a distance of 409.68 feet to the point of beginning.

Containing 1.946 acres.

The basis for bearings is the center-line of County Highway 5 being S 18°-24'-41"W, and all other bearings are from angles and distances measured in a field survey by Lee Surveying and Mapping Co., Inc. on December 19, 2003.

Description prepared by:



ORIGINAL STAMP IN GREEN

A handwritten signature in black ink, appearing to read 'Jeffrey I. Lee'.

Jeffrey I. Lee  
Professional Surveyor 6359  
January 20, 2003

L-3441



REVID 1-28-04 SMM OK  
**Lee Surveying and Mapping Co., Inc.**

Land Surveys • Topography • Subdivisions • Construction Layout

117 N. Madriver St.  
Bellefontaine OH 43311



Phone: (937) 593-7335  
Fax: (937) 593-7444

**TRACT F-6  
5.370 ACRES**

Lying in Virginia Military Survey 4493-4525, Monroe Township, Logan County, Ohio.

Being out of the Countrytyme Grove City Ltd. 53.602 acre tract as deeded and described on Official Record 691, Page 702 of the Logan County Records of Deeds and being more particularly described as follows:

Beginning at a 3/4 inch iron rod found in a monument box at the intersection center-lines of County Highway 5 (60 feet wide) and Township Road 165 (60 feet wide).

THENCE, with the center-line of County Highway 5, N 18°-24'-41"E, a distance of 1982.01 feet to a MAG nail set at THE TRUE POINT OF BEGINNING.

THENCE, N 71°-35'-19"W, a distance of 946.51 feet to a point, passing 5/8 inch iron rod set at 30.00 feet and 938.79 feet.

THENCE, with the south line of Virginia Military Survey 12099 and Thomas W. Godwin and C. Joan Godwin original 189.963 acre tract (O.R. 92, Pg. 145), N 66°-58'-21"E, a distance of 500.69 feet to a 5/8 inch iron rod set.

THENCE, with the south line extended of the John M. Kauffman 1.256 acre tract (O.R. 623, Pg. 526) and said south line, S 65°-27'-21"E, a distance of 574.45 feet to a MAG nail found, passing a 5/8 inch iron rod found at 416.17 feet and 544.28 feet.

THENCE, with the center-line of County Highway 5, S 18°-24'-41"W, a distance of 270.00 feet to the point of beginning.

Containing 5.370 acres of which 0.187 acre is within the highway right-of-way.

The basis for bearings is the center-line of County Highway 5 being S 18°-24'-41"W, and all other bearings are from angles and distances measured in a field survey by Lee Surveying and Mapping Co., Inc. on December 19, 2003.

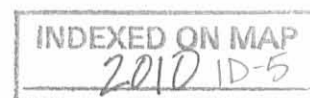
Description prepared by:



ORIGINAL STAMP IN GREEN

A handwritten signature in black ink, appearing to read 'J. Lee'.  
Jeffrey I. Lee  
Professional Surveyor 6359  
January 20, 2003

L-3441



REC'D 1-28-04 SJM/OK  
**Lee Surveying and Mapping Co., Inc.**

Land Surveys • Topography • Subdivisions • Construction Layout

117 N. Madriver St.  
Bellefontaine OH 43311



Phone: (937) 593-7335  
Fax: (937) 593-7444

**TRACT G-7  
5.021 ACRES**

Lying in Virginia Military Survey 4493-4525, Monroe Township, Logan County, Ohio.

Being out of the Countrytyme Grove City Ltd. 53.602 acre tract as deeded and described on Official Record 691, Page 702 of the Logan County Records of Deeds and being more particularly described as follows:

Beginning at a 3/4 inch iron rod found in a monument box at the intersection center-lines of County Highway 5 (60 feet wide) and Township Road 165 (60 feet wide).

THENCE, with the center-line of County Highway 5, N 18°-24'-41"E, a distance 1712.01 feet to a MAG nail set at THE TRUE POINT OF BEGINNING.

THENCE, N 71°-35'-19"W, a distance of 810.00 feet to a 5/8 inch iron rod set, passing a 5/8 inch iron rod set at 30.00 feet.

THENCE, N 18°-24'-41"E, a distance of 270.00 feet to a 5/8 inch iron rod set.

THENCE, S 71°-35'-19"E, a distance of 810.00 feet to a MAG nail set, passing a 5/8 inch iron rod set at 780.00 feet.

THENCE, with the center-line of County Highway 5, S 18°-24'-41"W, a distance of 270.00 feet to the point of beginning.


Containing 5.021 acres of which 0.186 acre is within the highway right-of-way.

The basis for bearings is the center-line of County Highway 5 being S 18°-24'-41"W, and all other bearings are from angles and distances measured in a field survey by Lee Surveying and Mapping Co., Inc. on December 19, 2003.

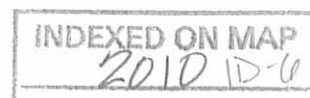
Description prepared by:



ORIGINAL STAMP IN GREEN

  
Jeffrey I. Lee  
Professional Surveyor 6359  
January 20, 2003

L-3441



REC'D 1-28-04 SMM OK  
**Lee Surveying and Mapping Co., Inc.**

Land Surveys • Topography • Subdivisions • Construction Layout

117 N. Madriver St.  
Bellefontaine OH 43311



Phone: (937) 593-7335  
Fax: (937) 593-7444

**TRACT H-8  
5.021 ACRES**

Lying in Virginia Military Survey 4493-4525, Monroe Township, Logan County, Ohio.

Being out of the Countrytyme Grove City Ltd. 53.602 acre tract as deeded and described on Official Record 691, Page 702 of the Logan County Records of Deeds and being more particularly described as follows:

Beginning at a 3/4 inch iron rod found in a monument box at the intersection of center-lines of County Highway 5 (60 feet wide) and Township Road 165 (60 feet wide).

THENCE, with the center-line of County Highway 5, N 18°-24'-41"E, a distance 1442.01 feet to a MAG nail set at THE TRUE POINT OF BEGINNING.

THENCE, N 71°-35'-19"W, a distance of 810.00 feet to a 5/8 inch iron rod set, passing a 5/8 inch iron rod set at 30.00 feet.

THENCE, N 18°-24'-41"E, a distance of 270.00 feet to a 5/8 inch iron rod set.

THENCE, S 71°-35'-19"E, a distance of 810.00 feet to a MAG nail set, passing a 5/8 inch iron rod set at 780.00 feet.

THENCE, with the center-line of County Highway 5, S 18°-24'-41"W, a distance of 270.00 feet to the point of beginning.

Containing 5.021 acres of which 0.186 acre is within the highway right-of-way.

The basis for bearings is the center-line of County Highway 5 being S 18°-24'-41"W, and all other bearings are from angles and distances measured in a field survey by Lee Surveying and Mapping Co., Inc. on December 19, 2003.

Description prepared by:

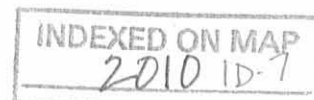


ORIGINAL STAMP IN GREEN

A handwritten signature in black ink, appearing to read 'Jeffrey I. Lee'.

Jeffrey I. Lee  
Professional Surveyor 6359  
January 20, 2003

L-3441



REC'D 1-28-04 SMJ dk  
**Lee Surveying and Mapping Co., Inc.**

Land Surveys • Topography • Subdivisions • Construction Layout

117 N. Madriver St.  
Bellefontaine OH 43311



Phone: (937) 593-7335  
Fax: (937) 593-7444

**TRACT J-9**  
**5.021 ACRES**

Lying in Virginia Military Survey 4493-4525, Monroe Township, Logan County, Ohio.

Being out of the Countrytyme Grove City Ltd. 53.602 acre tract as deeded and described on Official Record 691, Page 702 of the Logan County Records of Deeds and being more particularly described as follows:

Beginning at a 3/4 inch iron rod found in a monument box at the intersection of center-lines of County Highway 5 (60 feet wide) and Township Road 165 (60 feet wide).

THENCE, with the center-line of County Highway 5, N 18°-24'-41"E, a distance 1172.01 feet to a MAG nail set at THE TRUE POINT OF BEGINNING.

THENCE, N 71°-35'-19"W, a distance of 810.00 feet to a 5/8 inch iron rod set, passing a 5/8 inch iron rod set at 30.00 feet.

THENCE, N 18°-24'-41"E, a distance of 270.00 feet to a 5/8 inch iron rod set.

THENCE, S 71°-35'-19"E, a distance of 810.00 feet to a MAG nail set, passing a 5/8 inch iron rod set at 780.00 feet.

THENCE, with the center-line of County Highway 5, S 18°-24'-41"W, a distance of 270.00 feet to the point of beginning.

Containing 5.021 acres of which 0.186 acre is within the highway right-of-way.

The basis for bearings is the center-line of County Highway 5 being S 18°-24'-41"W, and all other bearings are from angles and distances measured in a field survey by Lee Surveying and Mapping Co., Inc. on December 19, 2003.

Description prepared by:

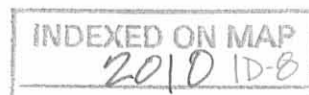


ORIGINAL STAMP IN GREEN

A handwritten signature in black ink, appearing to read 'Jeffrey I. Lee'.

Jeffrey I. Lee  
Professional Surveyor 6359  
January 20, 2003

L-3441





REC'D 1-28-04 SMM/OK  
**Lee Surveying and Mapping Co., Inc.**

Land Surveys • Topography • Subdivisions • Construction Layout

117 N. Madriver St.  
Bellefontaine OH 43311



Phone: (937) 593-7335  
Fax: (937) 593-7444

**TRACT K-10  
5.021 ACRES**

Lying in Virginia Military Survey 4493-4525, Monroe Township, Logan County, Ohio.

Being out of the Countrytyme Grove City Ltd. 53.602 acre tract as deeded and described on Official Record 691, Page 702 of the Logan County Records of Deeds and being more particularly described as follows:

Beginning at a 3/4 inch iron rod found in a monument box at the intersection of center-lines of County Highway 5 (60 feet wide) and Township Road 165 (60 feet wide).

THENCE, with the center-line of County Highway 5, N 18°-24'-41"E, a distance 902.01 feet to a MAG nail set at THE TRUE POINT OF BEGINNING.

THENCE, N 71°-35'-19"W, a distance of 810.00 feet to a 5/8 inch iron rod set, passing a 5/8 inch iron rod set at 30.00 feet.

THENCE, N 18°-24'-41"E, a distance of 270.00 feet to a 5/8 inch iron rod set.

THENCE, S 71°-35'-19"E, a distance of 810.00 feet to a MAG nail set, passing a 5/8 inch iron rod set at 780.00 feet.

THENCE, with the center-line of County Highway 5, S 18°-24'-41"W, a distance of 270.00 feet to the point of beginning.

Containing 5.021 acres of which 0.186 acre is within the highway right-of-way.

The basis for bearings is the center-line of County Highway 5 being S 18°-24'-41"W, and all other bearings are from angles and distances measured in a field survey by Lee Surveying and Mapping Co., Inc. on December 19, 2003.

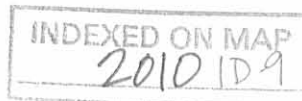
Description prepared by:



ORIGINAL STAMP IN GREEN

Jeffrey I. Lee  
Professional Surveyor 6359  
January 20, 2003

L-3441



REV'D 1-28-04 COM OK  
**Lee Surveying and Mapping Co., Inc.**

Land Surveys • Topography • Subdivisions • Construction Layout

117 N. Madriver St.  
Bellefontaine OH 43311



Phone: (937) 593-7335  
Fax: (937) 593-7444

**TRACT L-11**  
**9.595 ACRES**

Lying in Virginia Military Survey 4493-4525, Monroe Township, Logan County, Ohio.

Being out of the Countrytyme Grove City Ltd. 53.602 acre tract as deeded and described on Official Record 691, Page 702 of the Logan County Records of Deeds and being more particularly described as follows:

Beginning at a 3/4 inch iron rod found in a monument box at the intersection center-lines of County Highway 5 (60 feet wide) and Township Road 165 (60 feet wide).

THENCE, with the center-line of County Highway 5, N 18°-24'-41"E, a distance 142.79 feet to a MAG nail found at THE TRUE POINT OF BEGINNING.

THENCE, with the northeasterly line of the Neil D. Yoder and Diane Sue Yoder, 65.595 acre tract (O.R. 520, Pg. 495), N 40°-36'-09"W, a distance of 944.84 feet to a 5/8 inch iron rod set, passing a 5/8 inch iron rod found at 34.78 feet.

THENCE, N 18°-24'-41"E, a distance of 272.79 feet to a 5/8 inch iron rod set.

THENCE, S 71°-35'-19"E, a distance of 810.00 feet to a MAG nail set, passing a 5/8 inch iron rod set at 780.00 feet.

THENCE, with the center-line of County Highway 5, S 18°-24'-41"W, a distance of 759.22 feet to the point of beginning.

Containing 9.595 acres of which 0.517 acre is within the highway right-of-way.

The basis for bearings is the center-line of County Highway 5 being S 18°-24'-41"W, and all other bearings are from angles and distances measured in a field survey by Lee Surveying and Mapping Co., Inc. on December 19, 2003.

Description prepared by:



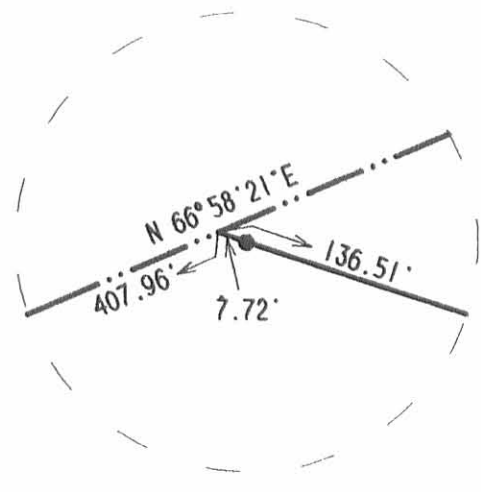
ORIGINAL STAMP IN GREEN

A handwritten signature in black ink, appearing to read 'Jeffrey I. Lee'.

Jeffrey I. Lee  
Professional Surveyor 6359  
January 20, 2003

L-3441





DETAIL A

KEVIN J. FORREST  
AND PEGGY J. FORREST  
35.28 ACRES  
O.R. 153, PG. 612

THOMAS W. GODWIN  
AND C. JOAN GODWIN  
ORIG. 189.963 ACRES  
O.R. 92, PG. 145

JOHN M. KAUFFMAN  
1.256 ACRE TRACT  
O.R. 623, PG. 526

JESSALYN I. STRAYER  
ORIG. 58.554 ACRES  
O.R. 178, PG. 463  
PARCEL TWO

NEIL D. YODER AND  
DIANE SUE YODER  
65.595 ACRES  
O.R. 520, PG. 465

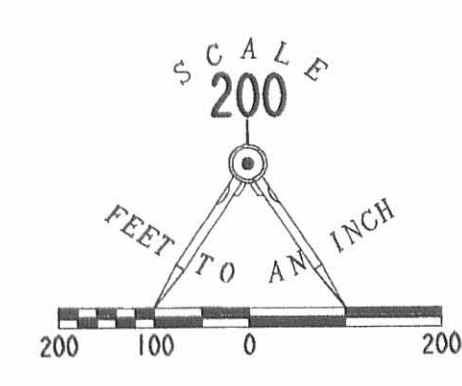
**SURVEY OF 10 TRACTS  
OUT OF THE COUNTRYME GROVE CITY LTD.  
ORIGINAL 53.602 ACRE TRACT  
OFFICIAL RECORD 691, PAGE 702  
VIRGINIA MILITARY SURVEY 4493-4525  
MONROE TOWNSHIP  
LOGAN COUNTY, OHIO**

2 WORKING DAYS  
**BEFORE YOU DIG**  
CALL TOLL FREE **800-362-2764**  
OHIO UTILITIES PROTECTION SERVICE.

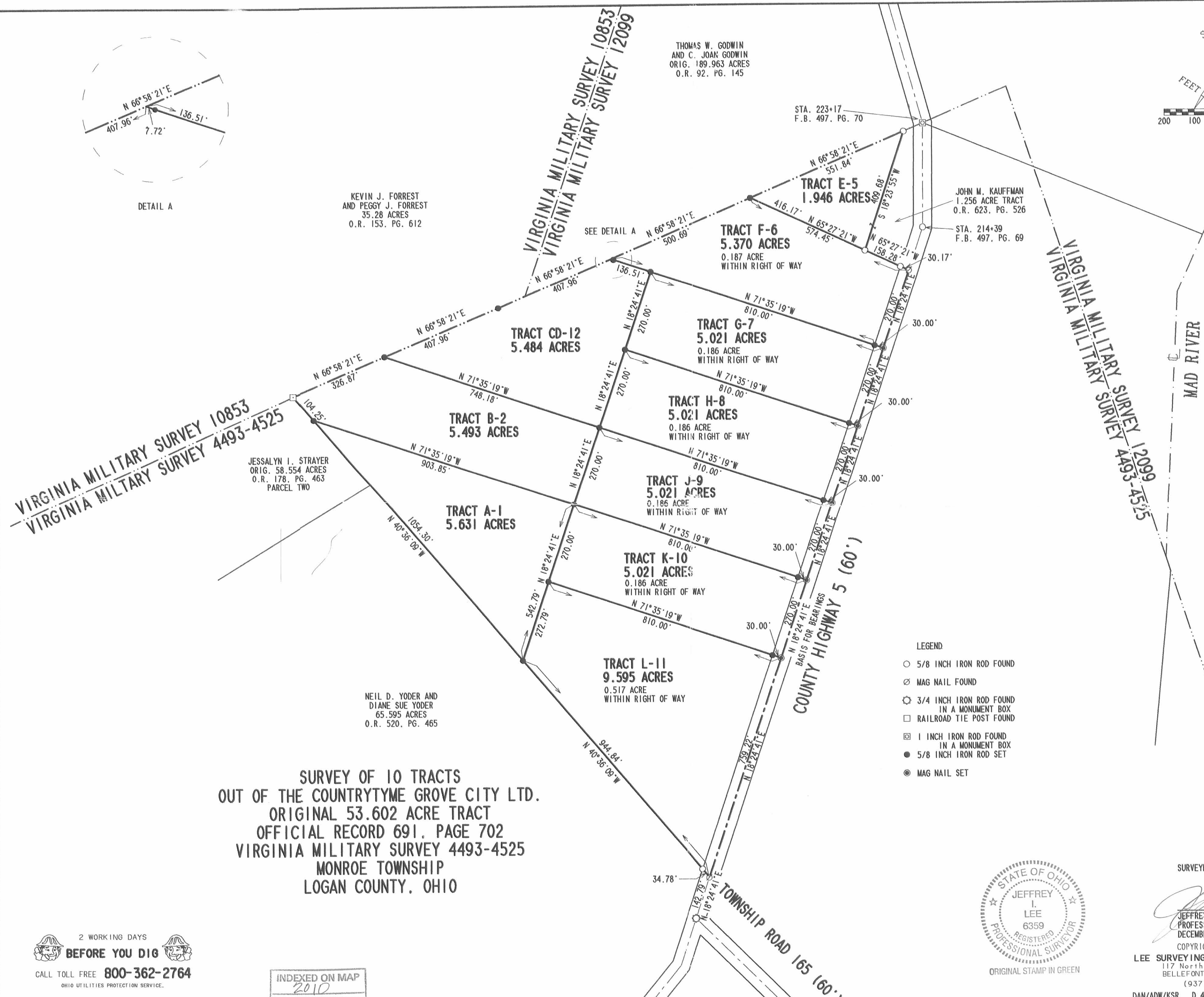
INDEXED ON MAP  
2010



ORIGINAL STAMP IN GREEN



SURVEYED BY:  
  
JEFFREY I. LEE  
PROFESSIONAL SURVEYOR 6359  
DECEMBER 19, 2003  
COPYRIGHT 2004 BY:  
**LEE SURVEYING & MAPPING CO., INC.**  
117 North Madriver Street  
BELLEFONTAINE, OHIO 43311  
(937) 593-7335



- LEGEND
- 5/8 INCH IRON ROD FOUND
  - ⊗ MAG NAIL FOUND
  - ⊗ 3/4 INCH IRON ROD FOUND IN A MONUMENT BOX
  - RAILROAD TIE POST FOUND
  - ⊗ 1 INCH IRON ROD FOUND IN A MONUMENT BOX
  - 5/8 INCH IRON ROD SET
  - ⊗ MAG NAIL SET

REC'D 2-18-04 SMY OK

# Lee Surveying and Mapping Co., Inc.

Land Surveys • Topography • Subdivisions • Construction Layout

117 N. Madriver St.  
Bellefontaine OH 43311



Phone: (937) 593-7335  
Fax: (937) 593-7444

## TRACT EF-13 7.316 ACRES

Lying in Virginia Military Survey 4493-4525, Monroe Township, Logan County, Ohio.

Being out of the Countrytyme Grove City Ltd. 53.602 acre tract as deeded and described on Official Record 691, Page 702 of the Logan County Records of Deeds and being more particularly described as follows:

Beginning at a 3/4 inch iron rod found in a monument box at the intersection center-lines of County Highway 5 (60 feet wide) and Township Road 165 (60 feet wide).

THENCE, with the center-line of County Highway 5, N 18°-24'-41"E, a distance of 1982.01 feet to a MAG nail set at THE TRUE POINT OF BEGINNING.

THENCE, N 71°-35'-19"W, a distance of 946.51 feet to a point, passing 5/8 inch iron rod set at 30.00 feet and 938.79 feet.

THENCE, with the south lines of Virginia Military Survey 12099 and Thomas W. Godwin and C. Joan Godwin original 189.963 acre tract (O.R. 92, Pg. 145), N 66°-58'-21"E, a distance of 1052.53 feet to a 5/8 inch iron rod found.

THENCE, with the west line of the John M. Kauffman 1.256 acre tract (O.R. 623, Pg. 526) , S 18°-23'-55"W, a distance of 409.68 feet to a 5/8 inch iron rod found.

THENCE, with the south line line of said 1.256 acre tract, S 65°-27'-21"E, a distance of 158.28 feet to a MAG nail found on the centerline of County Highway 5, passing a 5/8 inch iron rod found at 128.11 feet.

THENCE, with the center-line of County Highway 5, S 18°-24'-41"W, a distance of 270.00 feet to the point of beginning.

Containing 7.316 acres of which 0.187 acre is within the highway right-of-way.

The basis for bearings is the center-line of County Highway 5 being S 18°-24'-41"W, and all other bearings are from angles and distances measured in a field survey by Lee Surveying and Mapping Co., Inc. on December 19, 2003.

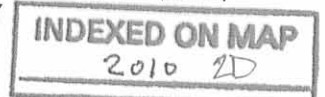
Description prepared by:



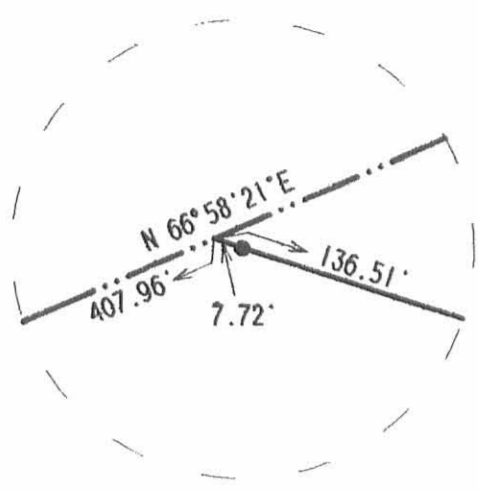
ORIGINAL STAMP IN GREEN

*Jeffrey I. Lee*  
Jeffrey I. Lee  
Professional Surveyor 6359  
January 20, 2003

L-3441



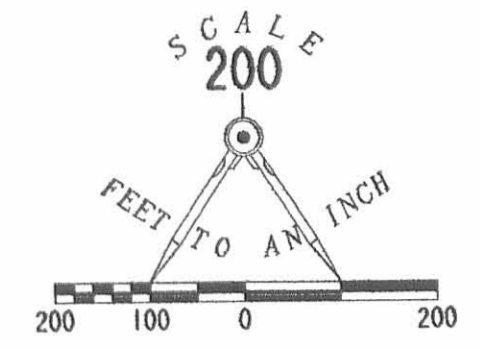
REV'D 2-18-04 SMY/OK



DETAIL A

KEVIN J. FORREST  
AND PEGGY J. FORREST  
35.28 ACRES  
O.R. 153. PG. 612

THOMAS W. GODWIN  
AND C. JOAN GODWIN  
ORIG. 189.963 ACRES  
O.R. 92. PG. 145



VIRGINIA MILITARY SURVEY 10853  
VIRGINIA MILITARY SURVEY 4493-4525

JESSALYN I. STRAYER  
ORIG. 58.554 ACRES  
O.R. 178. PG. 463  
PARCEL TWO

NEIL D. YODER AND  
DIANE SUE YODER  
65.595 ACRES  
O.R. 520. PG. 465

**SURVEY OF 9 TRACTS  
OUT OF THE COUNTRYME GROVE CITY LTD.  
ORIGINAL 53.602 ACRE TRACT  
OFFICIAL RECORD 691, PAGE 702  
VIRGINIA MILITARY SURVEY 4493-4525  
MONROE TOWNSHIP  
LOGAN COUNTY, OHIO**

TRACT CD-12  
5.484 ACRES

TRACT B-2  
5.493 ACRES

TRACT A-1  
5.631 ACRES

TRACT L-11  
9.595 ACRES  
0.517 ACRE  
WITHIN RIGHT OF WAY

TRACT K-10  
5.021 ACRES  
0.186 ACRE  
WITHIN RIGHT OF WAY

TRACT J-9  
5.021 ACRES  
0.186 ACRE  
WITHIN RIGHT OF WAY

TRACT H-8  
5.021 ACRES  
0.186 ACRE  
WITHIN RIGHT OF WAY

TRACT G-7  
5.021 ACRES  
0.186 ACRE  
WITHIN RIGHT OF WAY

TRACT EF-13  
7.316 ACRES  
0.187 ACRE  
WITHIN RIGHT OF WAY

JOHN M. KAUFFMAN  
1.256 ACRE TRACT  
O.R. 623. PG. 526

STA. 223+17  
F.B. 497. PG. 70

STA. 214+39  
F.B. 497. PG. 69

- LEGEND
- 5/8 INCH IRON ROD FOUND
  - ⊗ MAG NAIL FOUND
  - ⊙ 3/4 INCH IRON ROD FOUND IN A MONUMENT BOX
  - RAILROAD TIE POST FOUND
  - ⊠ 1 INCH IRON ROD FOUND IN A MONUMENT BOX
  - 5/8 INCH IRON ROD SET
  - ⊙ MAG NAIL SET



SURVEYED BY:  
*Jeffrey I. Lee*  
JEFFREY I. LEE  
PROFESSIONAL SURVEYOR 6359  
DECEMBER 19, 2003  
REVISED FEBRUARY 12, 2004

COPYRIGHT 2004 BY:  
**LEE SURVEYING & MAPPING CO., INC.**  
117 North Madriver Street  
BELLEFONTAINE, OHIO 43311  
(937) 593-7335  
DAN/ADW/KSR D412 GRBB6A L-3441-B-2-2

2 WORKING DAYS  
**BEFORE YOU DIG**  
CALL TOLL FREE **800-362-2764**  
OHIO UTILITIES PROTECTION SERVICE.

INDEXED ON MAP  
2010 2P

2E'D 12-1-03 SMY OK

# Lee Surveying and Mapping Co., Inc.

Land Surveys • Topography • Subdivisions • Construction Layout

117 N. Madriver St.  
Bellefontaine OH 43311



Phone: (937) 593-7335  
Fax: (937) 593-7444

## GRUBBS 84.972 ACRES

Lying in Virginia Military Surveys 4493, 4525, and 12099, Monroe Township, Logan County, Ohio.

Being all of the Eleanor A, Grubbs 4.57 acre and 2.73 acre tracts (Tracts 1 and 6) and part of the 58.8 acre, 73.89 acre and 3.0 acre tracts (Tracts 2, 3 and 4) as deeded and described in Official Record 97, Page 796 of the Logan County Records of Deeds and being more particularly described as follows:

Beginning at a 3/4 inch iron rod found in monument box at the intersection of the center-lines of County Highway 5 and Township Road 165, also being County Highway 5 Station 190+38.7 (Logan County Engineer's Field Book 497, Page 68).

THENCE, with the center-line of County Highway 5 (60 feet wide), N 18°-24'-41"E, a distance of 2399.99 feet to a 5/8 inch iron rod found at Station 214+39 (Logan County Engineer's Field Book 497, Page 69).

THENCE, continuing with the said center-line, N 00°-23'-05"E, a distance of 341.17 feet to a 1 inch iron rod found in monument box at Station 217+80 (Field Book 497, Page 69).

THENCE, with the south line of the Premier Properties 0.61 acre and original 69.49 acre tracts (O.R. 116, Pg. 978, Tract X, Parcels X and IX), S 67°-50'-28"E, a distance of 995.54 feet to a point, passing a 6 inch wood corner post found at 32.30 feet and a 5/8 inch iron rod set at 962.54 feet.

THENCE, with the center-line of the Mad River and the west line of the James Edwin Gantz original 265.47 acre tract (Vol. 280, Pg. 345, first parcel), S 24°-21'-26"W, a distance of 205.62 feet to a point, referenced by a 5/8 inch iron rod set N 69°-15'-53"W, a distance of 20.00 feet.

THENCE, continuing with the center-line of Mad River and the west line of the said 265.47 acre tract, S 02°-39'-31"W, a distance of 878.55 feet to a point.

THENCE, with a westerly line of Virginia Military Survey 12099, S 18°-28'-18"E, a distance of 48.00 feet to a 5/8 inch iron rod set.

THENCE, with the west line of the Don E. Maples, Trustee original 28.83 acre tract (O.R. 374, Pg. 674 Tract 4), S 05°-23'-38"W, a distance of 2122.70 feet to a railroad spike found, passing a 5/8 inch iron rod set at 2087.56 feet.

THENCE, with the center-line of Township Road 165 (60 feet wide), the following three courses:

- 1.) N 53°-13'-48"W, a distance of 95.85 feet to a 3/4 inch iron rod found.
- 2.) S 87°-43'-42"W, a distance of 340.77 feet to a 1 inch iron pipe found.
- 3.) N 45°-32'-48"W, a distance of 1338.06 feet to the point of beginning.

Containing 84.972 acres, of which 3.089 acres are within the highway rights-of-way.

The basis for bearings is the center-line of County Highway 5, being N 18°-24'-41"E, and all other bearings are from angles and distances measured in a field survey by Lee Surveying and Mapping Co., Inc. on November 12, 2003.

Description prepared by:

Jeffrey I. Lee  
Professional Surveyor 6359  
November 19, 2003

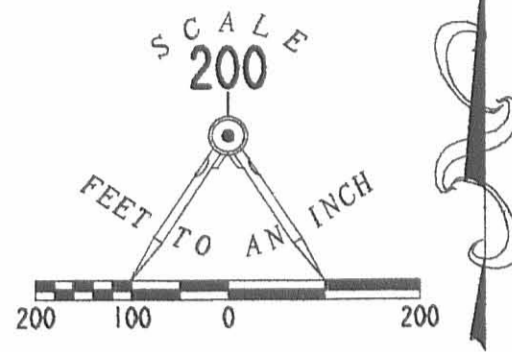
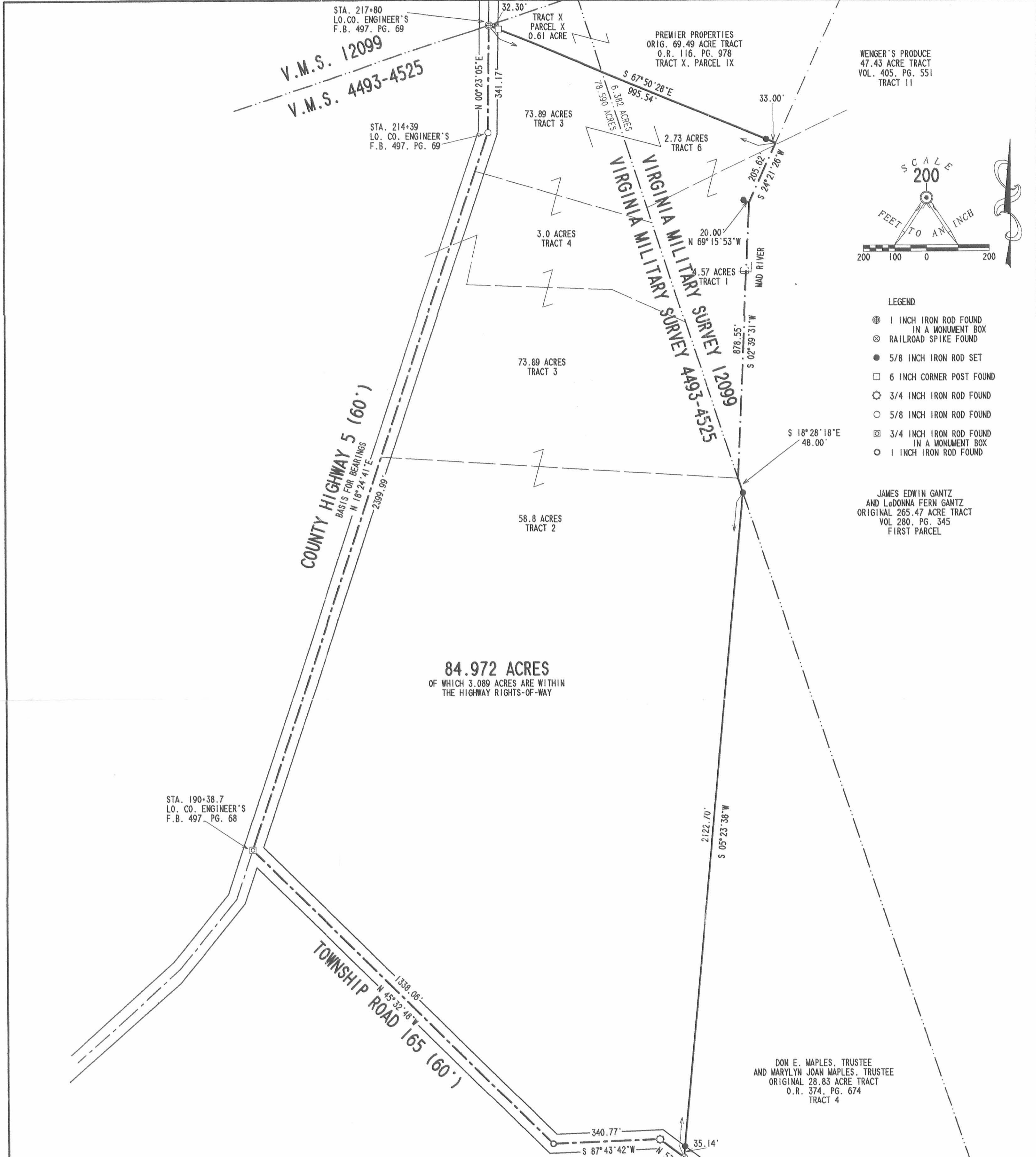


L-3441



ORIGINAL STAMP IN GREEN

REC'D 12-3-03 SMY



- LEGEND**
- ⊙ 1 INCH IRON ROD FOUND IN A MONUMENT BOX
  - ⊗ RAILROAD SPIKE FOUND
  - 5/8 INCH IRON ROD SET
  - 6 INCH CORNER POST FOUND
  - ⊙ 3/4 INCH IRON ROD FOUND
  - 5/8 INCH IRON ROD FOUND
  - ⊠ 3/4 INCH IRON ROD FOUND IN A MONUMENT BOX
  - 1 INCH IRON ROD FOUND

JAMES EDWIN GANTZ AND LADONNA FERN GANTZ ORIGINAL 265.47 ACRE TRACT VOL. 280, PG. 345 FIRST PARCEL

DON E. MAPLES, TRUSTEE AND MARYLYN JOAN MAPLES, TRUSTEE ORIGINAL 28.83 ACRE TRACT O.R. 374, PG. 674 TRACT 4

I HEREBY STATE TO THE TITLE COMPANY, LTD. THAT I HAVE SURVEYED THE PROPERTY IN THE FORGOING TITLE CAPTION AND THAT SAID SURVEY IS TRUE AND ACCURATE TO THE BEST OF MY KNOWLEDGE AND BELIEF.

**SURVEY OF ALL OF THE ELEANOR A. GRUBBS 4.57 ACRE TRACT, 2.73 ACRE TRACT (TRACTS 1 AND 6) AND PART OF THE 58.8 ACRE AND 3.0 ACRE TRACT (TRACTS 2, 3, AND 4) OFFICIAL RECORD 97, PAGE 796 VIRGINIA MILITARY SURVEYS 4493, 4525, AND 12099 MONROE TOWNSHIP LOGAN COUNTY, OHIO**



JEFFREY I. LEE PROFESSIONAL SURVEYOR 6359 NOVEMBER 12, 2003

COPYRIGHT 2003 BY: LEE SURVEYING & MAPPING CO., INC. 117 North Medriver Street BELLEFONTAINE, OHIO 43311 (937) 593-7335

2 WORKING DAYS BEFORE YOU DIG CALL TOLL FREE 800-362-2764 OHIO UTILITIES PROTECTION SERVICE.

INDEXED ON MAP 2010 3P

**ROBERT AND INARA MILROY SURVEY  
1.500 ACRES  
November 10, 2007**

The following described 1.500 acre tract of land is situated in Virginia Military Survey 4493, Monroe Township, Logan County, Ohio and being part of Inara P. Milroy's 84.972 acre tract described in Official Record Volume 695, page 50, said 1.500 acre tract more particularly described as follows:

Beginning for reference at a stone found in a monument box at the intersection of the centerline of County Road 5 (60 feet wide) with the north line of V.M.S. 4493 and the south line of V.M.S. 12099, said stone referenced as centerline Station 217+80 in Logan County Engineer's field book 497, page 69 and being at the north corner of said 84.972 acre tract;

Thence South 8°48'03" West 341.17 feet, following the centerline of County Road 5 and the west line of said 84.972 acre tract, to a 5/8 inch iron pin found and referenced as centerline Station 214+39 in said field book 497, page 69;

Thence South 26°50'00" West 329.55 feet, continuing along the centerline of County Road 5 and the west line of said 84.972 acre tract, to a magnetic nail set and marking the **place of beginning**;

Thence **South 53°35'42" East 245.42 feet**, departing from the centerline of County Road 5 and entering said 84.972 acre tract, passing an iron pin set at 30.42 feet, to an iron pin set;

Thence **South 26°50'00" West 270.00 feet**, crossing a stream, to an iron pin set on the south bank;

Thence **North 53°35'42" West 245.42 feet**, passing an iron pin set at 210.42 feet, to a magnetic nail set in the centerline of County Road 5 and in the west line of said 84.972 acre tract;

Thence **North 26°50'00" East 270.00 feet**, following the centerline of County Road 5 and the west line of said 84.972 acre tract, to the **place of beginning, containing 1.500 acres**, more or less, and subject to all valid easements and restrictions of record.

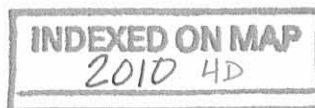
Of the above-described 1.500 acre tract of land, 0.186 acre is within the road right-of-way of County Road 5.

The above description was prepared from an actual field survey made by George A. Blackburn, Registered Surveyor #7873, during the month of November 2007. Iron pins set are 5/8 inch by 30 inch reinforcing rods with plastic caps marked "Blackburn RS #7873." Bearings indicated herein are based on the centerline of County Road 5 (60 feet wide) bearing North 26°50'00" East.

Description prepared by:

 11/10/07

George A. Blackburn, R.S. #7873  
12125 Green Street  
Middleburg, Ohio 43336  
(937) 666-5605





REV'D 11-15-07 SMY OK

# PLAT OF SURVEY IN VIRGINIA MILITARY SURVEY 4493 MONROE TOWNSHIP LOGAN COUNTY, OHIO



## COUNTY ROAD 5 (60')

(Log. Co. Eng. F.B. 497, pgs. 68 and 69)



### LEGEND

- Magnetic nail set
- 5/8" Iron pin found
- 5/8" Iron pin set
- 3/4" Iron pin found in monument box
- ▼ Stone found in monument box



**BLACKBURN SURVEYING**  
12125 GREEN STREET  
MIDDLEBURG, OHIO 43336  
(937) 666-5605

DATE :	11/10/07	REVISIONS	DATE	BY
SCALE :	1" = 50'			
CHECKED BY:	<i>GA</i>			

**PLAT PREPARED FOR  
ROBERT AND INARA MILROY**

I hereby certify that this plat was prepared from an actual field survey and that monuments were placed as indicated hereon.  
*George A. Blackburn* 11/10/07  
George A. Blackburn, R.S. 7873

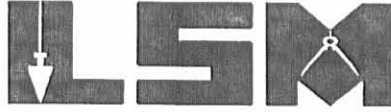
SHEET  
1  
OF 1

INDEXED ON MAP  
2010 4P

# Lee Surveying and Mapping Co., Inc.

Land Surveys • Topography • Subdivisions • Construction Layout

117 N. Madriver St.  
Bellefontaine OH 43311



Phone: (937) 593-7335  
Fax: (937) 593-7444

## GRUBBS 6.722 ACRES

Lying in Virginia Military Survey 4493-4525, Monroe Township, Logan County, Ohio.

Being out of the Eleanor A. Grubbs original 76.89 acre and 3.60 acre tracts as deeded and described in Official Record 97, Page 796, Tract 3 and Tract 5 of the Logan County Records of Deeds and being more particularly described as follows:

Beginning at a 3/4 inch iron rod found in a monument box at the intersection of the center-lines of County Highway 5 and Township Road 165 at County Highway 5 center-line Station 190+38.7 (Logan County Engineer's Field Book 497, Pg. 68).

THENCE, with the center-line of County Highway 5 (60 feet wide), N 18°-24'-41" E, a distance of 142.79 feet to a MAG nail found at the TRUE POINT OF BEGINNING.

THENCE, with the northeast line of the Neil D. Yoder 65.595 acre tract (O.R. 520, Pg. 465), N 40°-36'-09" W, a distance of 1000.00 feet to a 5/8 inch iron rod set, passing a 5/8 inch iron rod set at 34.99 feet.

THENCE, N 34°-23'-14" E, a distance of 417.16 feet to a 5/8 inch iron rod set.

THENCE, S 29°-31'-53" E, a distance of 1000.00 feet to a MAG nail set, passing a 5/8 inch iron rod set at 959.59 feet.

THENCE, with the center-line of County Highway 5, S 18°-24'-41" W, a distance of 246.01 feet to the point of beginning.

Containing 6.722 acres, of which 0.173 acre is within the highway right-of-way.

The basis for bearings is the center-line of County Highway 5, being N 18°-24'-41" E, and all other bearings are from angles and distances measured in a field survey by Lee Surveying and Mapping Co., Inc. on October 2, 2002.

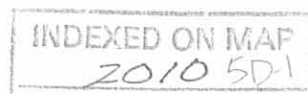
Description prepared by:



ORIGINAL STAMP IN GREEN

Jeffrey I. Lee  
Professional Surveyor 6359  
October 10, 2002

L-3441



REC'D 10-16-02 8M OK

# Lee Surveying and Mapping Co., Inc.

Land Surveys • Topography • Subdivisions • Construction Layout

117 N. Madriver St.  
Bellefontaine OH 43311



Phone: (937) 593-7335  
Fax: (937) 593-7444

## GRUBBS 10.709 ACRES

Lying in Virginia Military Survey 4493-4525, Monroe Township, Logan County, Ohio.

Being out of the Eleanor A. Grubbs original 76.89 acre tract as deeded and described in Official Record 97, Page 796, Tract 3 of the Logan County Records of Deeds and being more particularly described as follows:

Beginning at a 3/4 inch iron rod found in a monument box at the intersection of the center-lines of County Highway 5 and Township Road 165 at County Highway 5 center-line Station 190+38.7 (Logan County Engineer's Field Book 497, Pg. 68).

THENCE, with the center-line of County Highway 5 (60 feet wide), N 18°-24'-41" E, a distance of 142.79 feet to a MAG nail found.

THENCE, with the northeast line of the Neil D. Yoder 65.595 acre tract (O.R. 520, Pg. 465), N 40°-36'-09" W, a distance of 1000.00 feet to a 5/8 inch iron rod set at the TRUE POINT OF BEGINNING, passing a 5/8 inch iron rod set at 34.99 feet.

THENCE, with the northeast line of the said 65.595 acre tract and the northeast line of the Jessalyn I. Strayer original 58.554 acre tract (O.R. 178, Pg. 463, Parcel Two), N 40°-36'-09" W, a distance of 1103.39 feet to a railroad tie post found.

THENCE, with the north line of Virginia Military Survey 4493-4525 and the south line of the Kevin Forrest 35.28 acre tract (O.R. 153, Pg. 612), N 66°-58'-21" E, a distance of 590.37 feet to a 5/8 inch iron rod set.

THENCE, S 29°-31'-53" E, a distance of 832.58 feet to a 5/8 inch iron rod set.

THENCE, S 34°-23'-14" W, a distance of 417.16 feet to the point of beginning.

Containing 10.709 acres.

The basis for bearings is the center-line of County Highway 5, being N 18°-24'-41" E, and all other bearings are from angles and distances measured in a field survey by Lee Surveying and Mapping Co., Inc. on October 2, 2002.

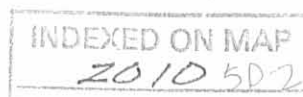
Description prepared by:



ORIGINAL STAMP IN GREEN

Jeffrey I. Lee  
Professional Surveyor 6359  
October 10, 2002

L-3441



REC'D 10-16-02 SJM OK

# Lee Surveying and Mapping Co., Inc.

Land Surveys • Topography • Subdivisions • Construction Layout

117 N. Madriver St.  
Bellefontaine OH 43311



Phone: (937) 593-7335  
Fax: (937) 593-7444

## GRUBBS 1.256 ACRES

Lying in Virginia Military Survey 4493-4525, Monroe Township, Logan County, Ohio.

Being out of the Eleanor A. Grubbs original 76.89 acre and 3.0 acre tracts as deeded and described in Official Record 97, Page 796, Tract 3 and Tract 4 of the Logan County Records of Deeds and being more particularly described as follows:

Beginning at a 3/4 inch iron rod found in a monument box at the intersection of the center-lines of County Highway 5 and Township Road 165 at County Highway 5 center-line Station 190+38.7 (Logan County Engineer's Field Book 497, Pg. 68).

THENCE, with the center-line of County Highway 5 (60 feet wide), N 18°-24'-41" E, a distance of 2252.01 feet to a MAG nail set at the TRUE POINT OF BEGINNING.

THENCE, N 65°-27'-21 W, a distance of 158.28 feet to a 5/8 inch iron rod set, passing a 5/8 inch iron rod set at 30.17 feet.

THENCE, N 18°-23'-55" E, a distance of 409.68 feet to a 5/8 inch iron rod set.

THENCE, with the north line of Virginia Military Survey 4493-4525 and the south line of the Thomas W. Godwin original 189.963 acre tract (O.R. 92, Pg. 145), N 66°-58'-21" E, a distance of 69.21 feet to a 1 inch iron rod found in a monument box at County Highway 5 center-line Station 217+80 (Logan County Engineer's Field Book 497, Pg. 69), passing a 5/8 inch iron rod set at 36.52 feet.

THENCE, with the center-line of County Highway 5, S 0°-23'-05" W, a distance of 341.17 feet to a 5/8 inch iron rod found at County Highway 5 center-line Station 214+39 (Logan County Engineer's Field Book 497, Pg. 69),

THENCE, with the center-line of County Highway 5, S 18°-24'-41" W, a distance of 147.98 feet to the point of beginning.

Containing 1.256 acres, of which 0.328 acre is within the highway right-of-way.

The basis for bearings is the center-line of County Highway 5, being N 18°-24'-41" E, and all other bearings are from angles and distances measured in a field survey by Lee Surveying and Mapping Co., Inc. on October 2, 2002.

Description prepared by:

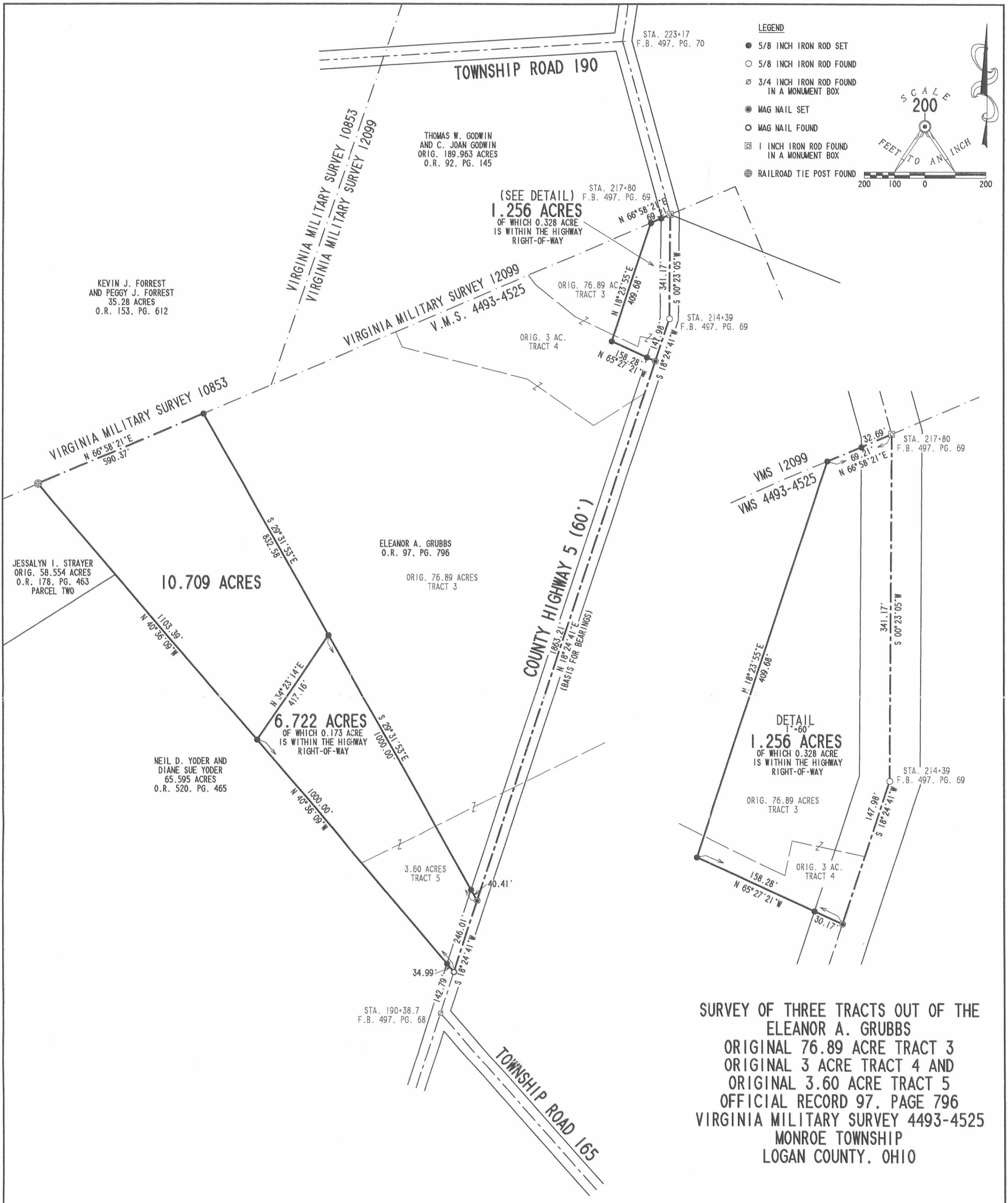


ORIGINAL STAMP IN GREEN

Jeffrey I. Lee  
Professional Surveyor 6359  
October 10, 2002

L-3441





**LEGEND**

- 5/8 INCH IRON ROD SET
- 5/8 INCH IRON ROD FOUND
- ⊙ 3/4 INCH IRON ROD FOUND IN A MONUMENT BOX
- ⊙ MAG NAIL SET
- MAG NAIL FOUND
- ⊠ 1 INCH IRON ROD FOUND IN A MONUMENT BOX
- ⊕ RAILROAD TIE POST FOUND

SCALE  
200  
FEET TO AN INCH

KEVIN J. FORREST  
AND PEGGY J. FORREST  
35.28 ACRES  
O.R. 153, PG. 612

THOMAS W. GODWIN  
AND C. JOAN GODWIN  
ORIG. 189.963 ACRES  
O.R. 92, PG. 145

(SEE DETAIL)  
**1.256 ACRES**  
OF WHICH 0.328 ACRE  
IS WITHIN THE HIGHWAY  
RIGHT-OF-WAY

JESSALYN I. STRAYER  
ORIG. 58.554 ACRES  
O.R. 178, PG. 463  
PARCEL TWO

**10.709 ACRES**

ELEANOR A. GRUBBS  
O.R. 97, PG. 796

ORIG. 76.89 ACRES  
TRACT 3

**6.722 ACRES**  
OF WHICH 0.173 ACRE  
IS WITHIN THE HIGHWAY  
RIGHT-OF-WAY

NEIL D. YODER AND  
DIANE SUE YODER  
65.595 ACRES  
O.R. 520, PG. 465

DETAIL  
**1.256 ACRES**  
OF WHICH 0.328 ACRE  
IS WITHIN THE HIGHWAY  
RIGHT-OF-WAY

ORIG. 76.89 ACRES  
TRACT 3

ORIG. 3 AC.  
TRACT 4

**SURVEY OF THREE TRACTS OUT OF THE  
ELEANOR A. GRUBBS  
ORIGINAL 76.89 ACRE TRACT 3  
ORIGINAL 3 ACRE TRACT 4 AND  
ORIGINAL 3.60 ACRE TRACT 5  
OFFICIAL RECORD 97, PAGE 796  
VIRGINIA MILITARY SURVEY 4493-4525  
MONROE TOWNSHIP  
LOGAN COUNTY, OHIO**

2 WORKING DAYS  
**BEFORE YOU DIG**  
CALL TOLL FREE **800-362-2764**  
OHIO UTILITIES PROTECTION SERVICE.



SURVEYED BY:  
*Jeffrey I. Lee*  
JEFFREY I. LEE  
PROFESSIONAL SURVEYOR 6359  
OCTOBER 2, 2002  
COPYRIGHT 2002 BY:  
**LEE SURVEYING & MAPPING CO., INC.**  
117 North Madriver Street  
BELLEFONTAINE, OHIO 43311  
(937) 593-7335

INDEXED ON MAP  
2010 5P

REV'D 12-2-03 SAM/OL

# Lee Surveying and Mapping Co., Inc.

Land Surveys • Topography • Subdivisions • Construction Layout

117 N. Madriver St.  
Bellefontaine OH 43311



Phone: (937) 593-7335  
Fax: (937) 593-7444

## GRUBBS 53.602 ACRES

Lying in Virginia Military Survey 4493-4525, Monroe Township, Logan County, Ohio.

Being out of the Eleanor A. Grubbs original 73.89 acre, 3.0 acre, and 3.6 acre tracts as deeded and described in Official Record 97, Page 796, Tracts 3, 4, and 5 of the Logan County Records of Deeds and being more particularly described as follows:

Beginning at a 3/4 inch iron rod found in a monument box found at the intersection of the center-lines of Township Road 165 (60 feet wide), and County Highway 5 (60 feet wide) at County Highway 5 center-line station 190+38.7 (Logan County Engineer's Field Book 497, Pg. 68).

THENCE, with the centerline of County Highway 5, N 18°-24'-41"E, a distance of 142.79 feet to a MAG nail found at the TRUE POINT OF BEGINNING.

THENCE, with the northeast lines of the Neil D. Yoder and Diane Sue Yoder 65.595 acre tract (O.R. 520, Pg. 465), and the Jessalyn I. Strayer original 58.554 acre tract (O.R. 178, Pg. 463, Parcel Two), N 40°-36'-09"W, a distance of 2103.39 feet to a railroad tie post found, passing a 5/8 inch iron rod found at 34.78 feet.

THENCE, with the north line of Virginia Military Survey of 4493-4525, the south lines of the Kevin J. Forrest and Peggy J. Forrest 35.28 acre tract (O.R. 153, Pg. 612), and the Thomas W. Godwin and C. Joan Godwin orig. 189.963 acre tract (O.R. 92, Pg. 145), N 66°-58'-21"E, a distance of 2195.33 feet to a 5/8 inch iron rod found.

THENCE, with the lines of the John M. Kauffman 1.256 acre tract (O.R. 623, Pg. 526), the following two courses:

1.) S 18°-23'-55"W, a distance of 409.68 feet to a 5/8 inch iron rod found.

2.) S 65°-27'-21"E, a distance of 158.28 feet to a MAG nail found, passing a 5/8 inch iron rod found at 128.11 feet.

THENCE, with the center-line of County Highway 5, S 18°-24'-41"W, a distance of 2109.22 feet to the point of beginning.

Containing 53.602 acres, of which 1.448 acre is within the highway right-of-way.

The basis for bearings is the center-line of County Highway 5, being S 18°-24'-41"W, and all other bearings are from angles and distances measured in a field survey by Lee Surveying and Mapping Co., Inc. on November 11, 2003.

Description prepared by:

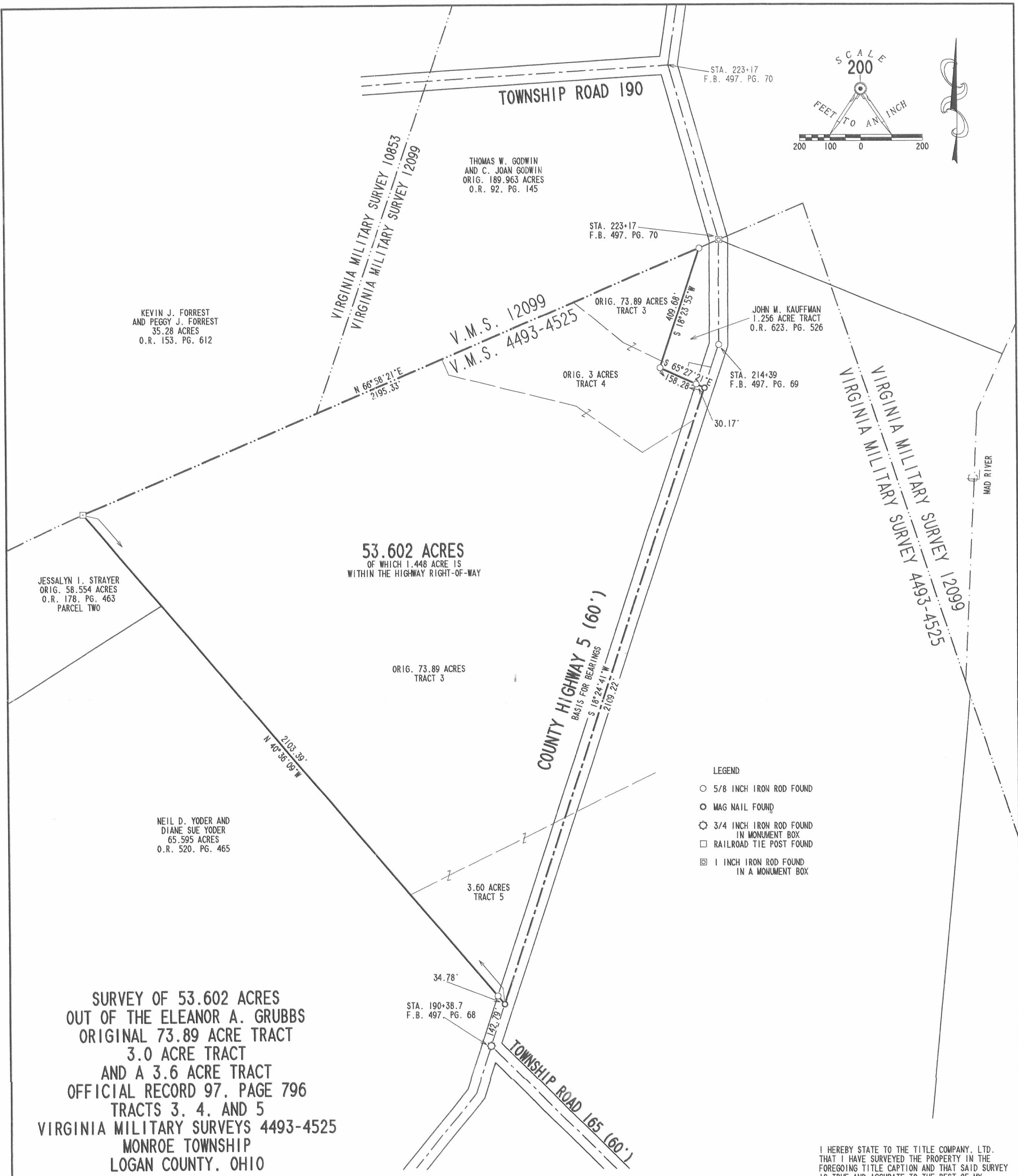
  
Jeffrey I. Lee  
Professional Surveyor 6359  
November 21, 2003



L-3441-b-2

ORIGINAL STAMP IN GREEN

INDEXED ON MAP  
2010 4D



KEVIN J. FORREST  
AND PEGGY J. FORREST  
35.28 ACRES  
O.R. 153, PG. 612

THOMAS W. GODWIN  
AND C. JOAN GODWIN  
ORIG. 189.963 ACRES  
O.R. 92, PG. 145

JOHN M. KAUFFMAN  
1.256 ACRE TRACT  
O.R. 623, PG. 526

JESSALYN I. STRAYER  
ORIG. 58.554 ACRES  
O.R. 178, PG. 463  
PARCEL TWO

53.602 ACRES  
OF WHICH 1.448 ACRE IS  
WITHIN THE HIGHWAY RIGHT-OF-WAY

NEIL D. YODER AND  
DIANE SUE YODER  
65.595 ACRES  
O.R. 520, PG. 465

SURVEY OF 53.602 ACRES  
OUT OF THE ELEANOR A. GRUBBS  
ORIGINAL 73.89 ACRE TRACT  
3.0 ACRE TRACT  
AND A 3.6 ACRE TRACT  
OFFICIAL RECORD 97, PAGE 796  
TRACTS 3, 4, AND 5  
VIRGINIA MILITARY SURVEYS 4493-4525  
MONROE TOWNSHIP  
LOGAN COUNTY, OHIO

- LEGEND
- 5/8 INCH IRON ROD FOUND
  - MAG NAIL FOUND
  - ⊗ 3/4 INCH IRON ROD FOUND IN MONUMENT BOX
  - RAILROAD TIE POST FOUND
  - ⊠ 1 INCH IRON ROD FOUND IN A MONUMENT BOX

I HEREBY STATE TO THE TITLE COMPANY, LTD.  
THAT I HAVE SURVEYED THE PROPERTY IN THE  
FOREGOING TITLE CAPTION AND THAT SAID SURVEY  
IS TRUE AND ACCURATE TO THE BEST OF MY  
KNOWLEDGE AND BELIEF.



*Jeffrey I. Lee*  
JEFFREY I. LEE  
PROFESSIONAL SURVEYOR 6359  
NOVEMBER 11, 2003

2 WORKING DAYS  
**BEFORE YOU DIG**  
CALL TOLL FREE **800-362-2764**  
OHIO UTILITIES PROTECTION SERVICE.

COPYRIGHT 2003 BY:  
**LEE SURVEYING & MAPPING CO., INC.**  
117 North Medriver Street  
BELLEFONTAINE, OHIO 43311  
(937) 593-7335  
D 411 GRBB4 L-3441-B-2-2

INDEXED ON MAP  
2010 up

DESCRIPTIONS

FOR

HARRY E. GRUBBS

The following described real estate situated in Monroe Township, Logan County, Ohio, and more particularly described as follows:

TRACT ONE: Being in V. M. S. No. 12,099 and beginning at a 1" square iron bar in the west line of said survey No. 12,099 and being the southwest corner of Joseph Shoot's 69.49 acre tract; thence N. 74° E. with west line of said Shoot's tract 495 feet to the center of the new dredged channel of Madriver; thence with the center of Madriver downstream S. 20° W. 280 feet; thence continuing with center of said Madriver S. 13° W. 680 feet to a point in the west line of said survey 12,099; thence N. 15° W. with said survey line No. 12,099, 815 feet to the place of beginning, said tract containing 4.57 acres more or less and being the same tract as surveyed in 1930 as shown and recorded in Logan County Surveyors Book 512 at pages 22 and 23. The above described land is a triangular strip of land out of the Northwest corner of present 274.24 acre tract owned by W. C. Huston and being that part on the west side of Mad River.

TRACT TWO: Being in V. M. S. No. 4493 and 4525 and beginning at a post in the West Liberty road and in the Southwest side of Marmon road; thence North 69½° E. 85 poles to a post; thence S. 1° E. 11.3 poles; thence S. 17° E. 26.8 poles; thence S. 72½° W. 9.4 poles; thence S. 1½° W. 24 poles with the west side of a ditch; thence S. 10° W. 19.8 poles; thence S. 25½° W. 10 poles; thence S. 45° E. 3.2 poles, the last two mentioned lines diverging from the ditch running with a bank; thence with the west side of said ditch S. 10° W. 53 poles to a post in the road to Piper's mill; thence with said road North 49½° W. 11.2 poles crossing Mad River to an angle of the road; thence N. 37° W. 20.2 poles to a post in Chamberlains line; thence N. 41½° W. 81.0 poles to a post in the West Liberty Road; thence N. 22½° E. 50.6 poles to the beginning, containing 58.08 acres more or less.

TRACT THREE: Being in V. M. S. No. 4493 and 4525 and beginning at a stake at the edge of the prairie in the east line of said survey; thence S. 70° W. 154 poles crossing road and branch several times to a stone on a high bank or ridge near a hickory tree and a small jack oak; thence S. 38° E. 95.0 poles; thence N. 67° E. 12. poles crossing the road and river four times to a stone in a bunch of willows on the bank of the river and in the east line of said survey; thence N. 20° W. 88 poles to the beginning containing 77½ acres, more or less. Excepting from the aforesaid premises three acres sold to James M. Motley. Also excepting a tract of land containing 61/100 acre conveyed to Nora G. Shoots et al. by deed dated May 17, 1941, for the description of which see Logan County Deed Records Volume 169 at page 523.

TRACT FOUR: Being in V. M. S. 4493 and 4525 and beginning at a stone in the east bank of the river and the east line of said survey; thence N. 75° W. 28 poles to a stone; thence N. 75° W. 6.2 poles to a stone in the center of the road from Zanesfield to West Liberty; thence S. 15° W. 2 poles and 5 links to a stone; thence N. 61° W. 14 poles to a stone; thence N. 48° W. 10 poles to a stone; thence N. 35° W. 2.4 poles to a stone in the North line of said survey; thence with said survey line S. 70° W. 29 poles to a stone; thence S. 20° E. 3.4 poles to a stone; thence S. 73° E. 26 poles to a stone; thence S. 52° E. 16 poles to a stone; thence N. 61° E. 14 poles to a stone; thence S. 22° W. 6.5 poles to a stone; thence S. 75° E. 43 poles to a stone in the east line of said survey; thence with said line N. 20° W. 10.5 poles to the place of beginning, containing 3 acres more or less.

INDEXED ON MAP  
2010 7D-1

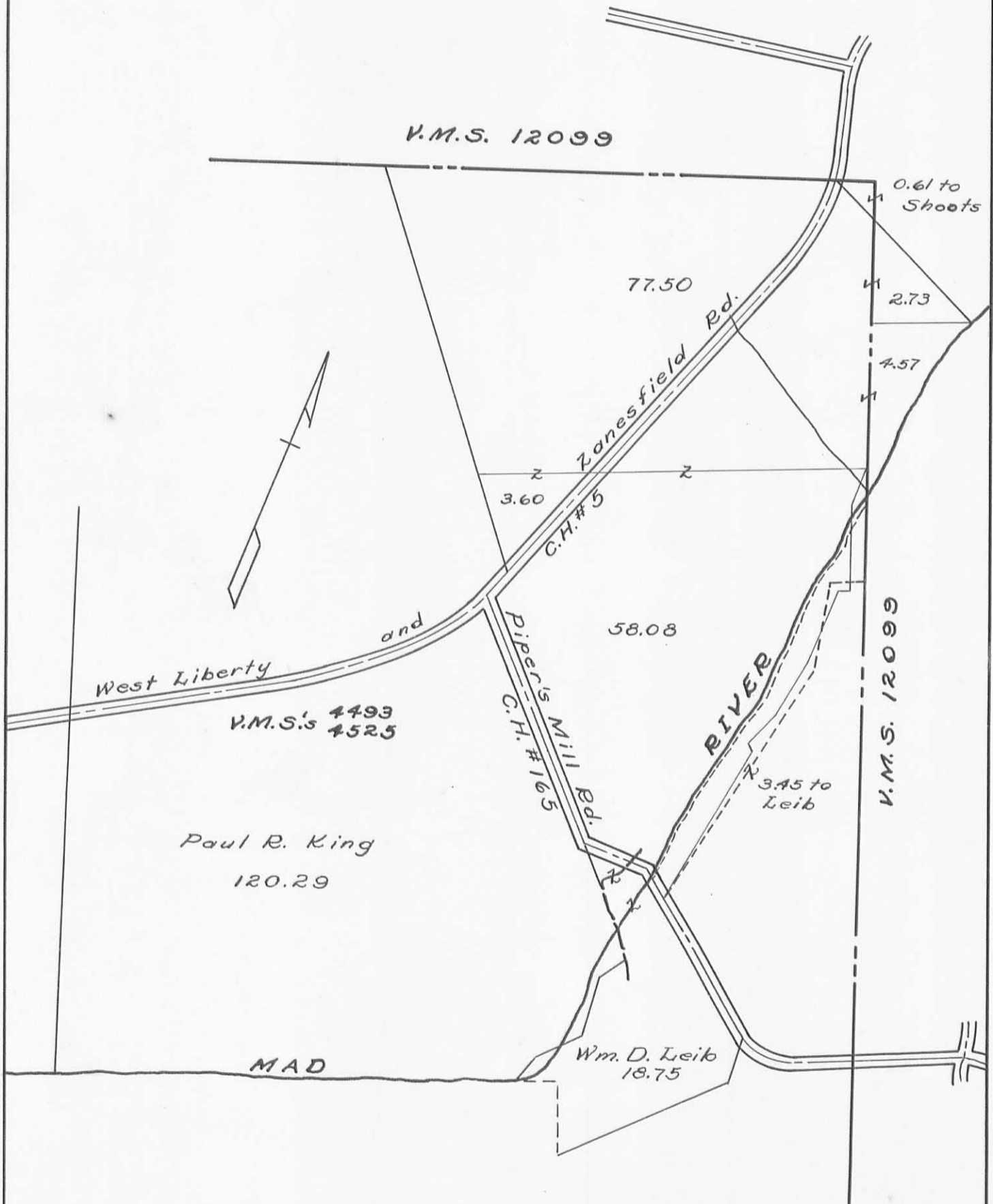


TRACT FIVE: Being in V. M. S. 4493 and 4525 beginning at a stake in the road leading from West Liberty to Zanesfield, and in the south line of the tract of land formerly owned by Marmor heirs; thence with said road S.  $22\frac{1}{2}^{\circ}$  W. 61 poles to a stake; 9.4 poles short of the fork of the road; thence N.  $36^{\circ}$  W. 32.2 poles to a stake from which a white oak 12" in diameter bears S.  $18^{\circ}$  E. 14 links; thence N.  $69\frac{1}{2}^{\circ}$  E.  $36\frac{1}{2}$  poles to the place of beginning containing 3.60 acres more or less. (Excepting the banks conveyed to William Leib; Beginning at a point on the East bank of Mad River in the center of the piper mill road now known as road No. 165; thence with center of said road S.  $47^{\circ}$  E. 91 feet to a point; thence N.  $13^{\circ}$  E. 1345 feet to a post; thence N. 10 deg. W. 470 feet to post; thence N.  $65^{\circ}$  10' E. 148 feet to a post in Clay Huston's west line; thence N.  $13^{\circ}$  W. with Huston's west line 300 feet to the bank of Mad River; thence in a southerly direction with the east bank of Mad River to the place of beginning said tract containing 3.45 acres more or less and being the same tract as surveyed April 24, 1929; as shown and recorded in Logan Co. Surveyors Book 479 at page 29.) *Exception to go with Tract Two*

TRACT SIX: Being in V. M. S. No. 12,099 beginning at a stone in the north line of V. M. S. 4493 and 4425 at the center of the West Liberty Zanesfield and Rushsylvania Pike (Co. Highway No. 5); thence with the north line of V. M. S. 4493, 4525, N. 73 deg. and 56 min. east 235.25 feet to a point in the northwest corner of said V. M. S. No. 4493 and 4525; thence with the survey line south 15 deg. 00 min. E. 226.45 feet to a stake, said stake being the beginning point of this survey; thence continuing with the survey line S. 15 deg. 00 min. E. 483.40 feet; thence N. 73 deg. 40 min. E. 493.00 feet to the center of the Mad River; thence N. 61 deg. 22 min. W. 682.35 feet passing a stake on the bank of Mad River at 39.90 feet to the place of beginning containing 2.73 acres.

LOGAN CO. MAP  
2010 7D-2

PLAT  
 for  
 HARRY E. GRUBBS  
 V.M.S.'s 4493 and 12099  
 V.M.S.'s 4525 and 12099  
 MONROE TWP. LOGAN Co. OH  
 OHIO



Scale: 1 inch = 10 chains

Dec. 1949  
 C.E.K.

INDEXED ON MAP

2010 7P