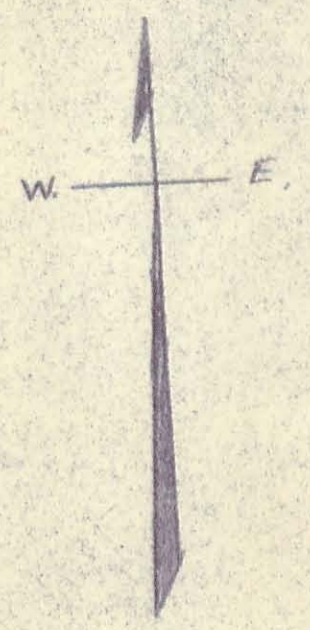


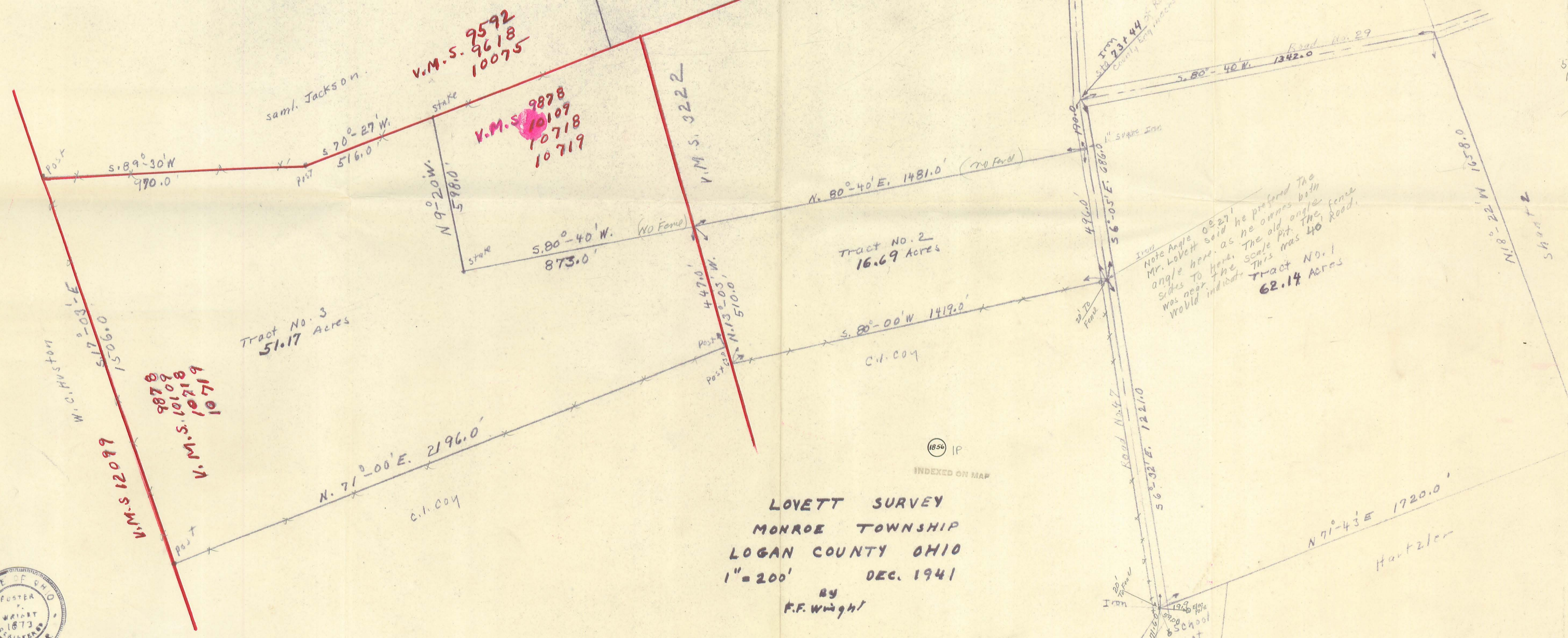
| Surreyed. | | |
|-------------|---------------|-------|
| Tract No. 1 | 62.14 | Acres |
| " " 2 | 16.69 | " |
| " " 3 | 51.17 | " |
| | <u>130.00</u> | |

In V.M.S. 3222 Present Map 131.50 Acres
 Surreyed Tract No. 1 62.14
 " " 2 16.69 78.83 "
 Remaining (Not surreyed.) 52.67 "

In V.M.S. 9878 Present Map 58.00 Acres
 Surreyed Tract #3 51.17 "
 Remaining (Not surreyed) 6.83 "



52.67
~~52.67~~
 52.67



51.17
 16.69
 62.14
 130.00



LOVETT SURVEY
 MONROE TOWNSHIP
 LOGAN COUNTY OHIO
 1" = 200' DEC. 1941
 By F.F. Wright

INDEXED ON MAP

Book FW-4