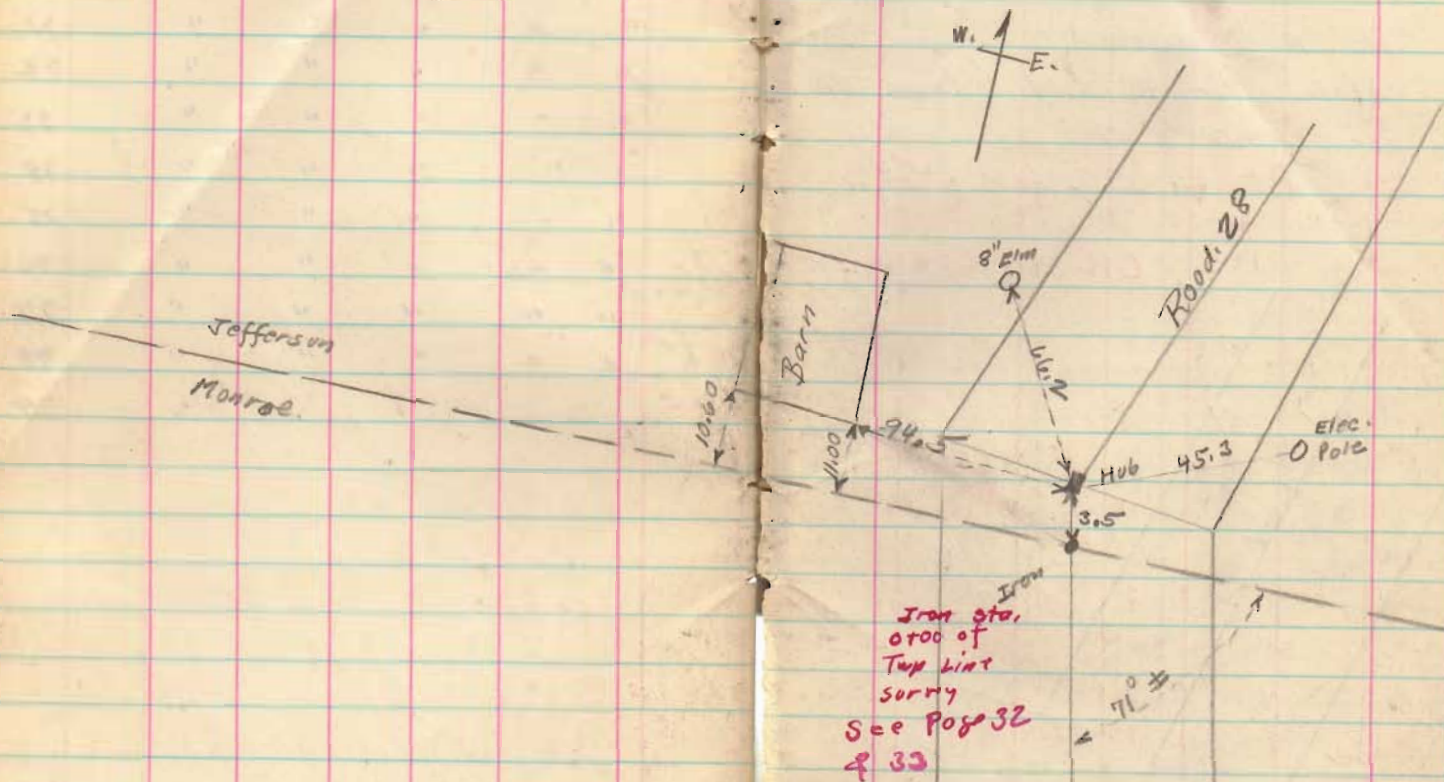


Tap line  
Monroe & Jefferson  
& Road 28

March -9-1938

Snow P.M.  
F. Wright  
G. Wilgus  
Bob Kinnard  
Don Hamilton



March - 1938

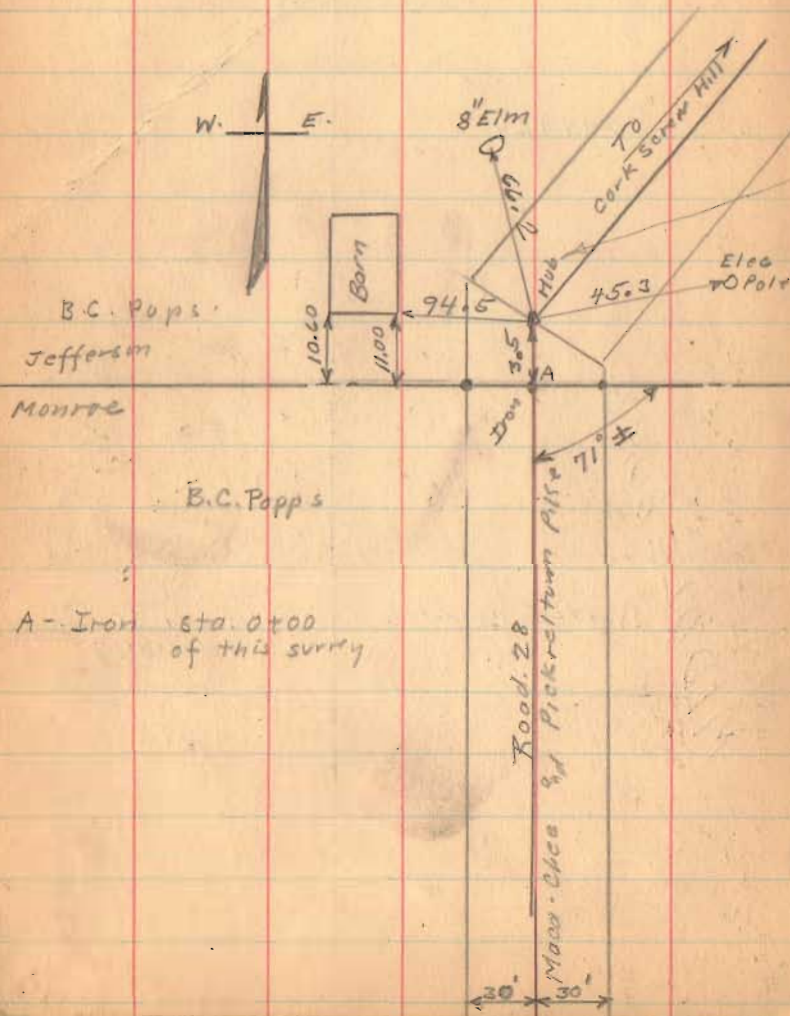
F. Wright  
G. Wilgus  
Bob. Kinnard  
Don Hamilton  
W.P. Wright

58

Township line Surrey

Monroe and Jefferson

Road 28 East To Township Corners.



found hub to June 1968 placed 1" of iron in said hub. c.n.

V.M.S. 4497

J.L. Williams

F.L. St. John

J.L. Williams

F.L. St. John

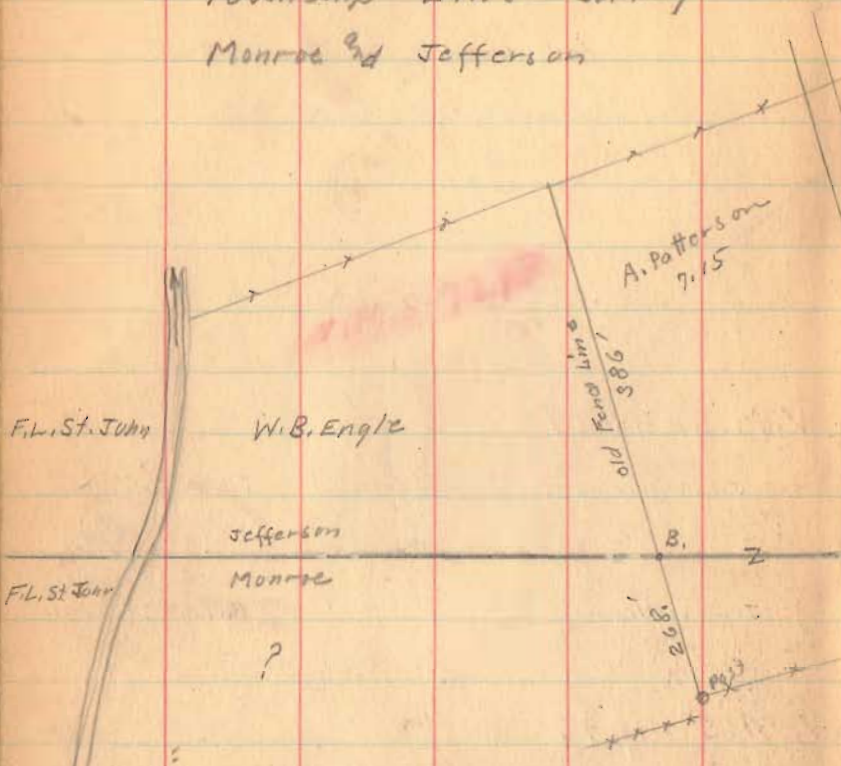
V.M.S. 4497

1808

INDEXED ON MAP

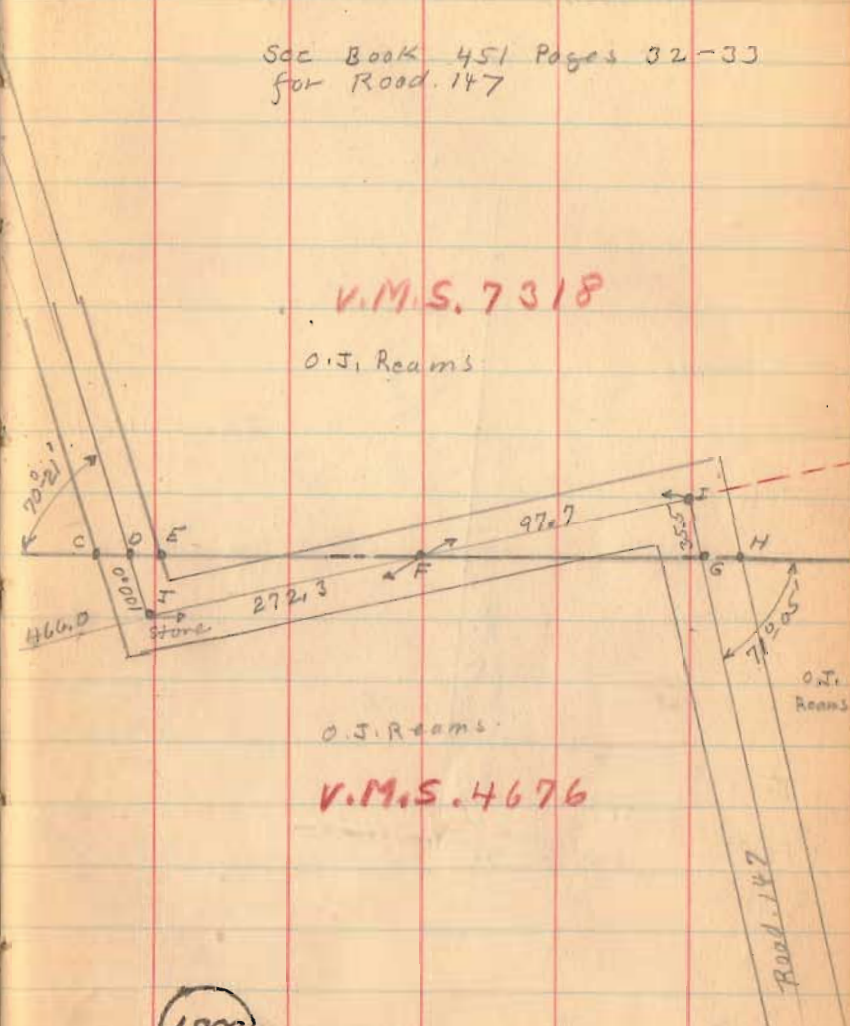
Township Line Survey  
 Monroe & Jefferson

Sec Book 451 Pages 32-33  
 for Road. 147



V.M.S. 7318

O.J. Reams



O.J. Reams

V.M.S. 4676

- B. Stake Placed in old fence line sta. 50+24
- C. Hub for Twp Line R/W Marker
- E. " " " " " "
- D Iron & Road sta. 55+25.4
- F. " " " " 58+15.1
- G. " " " " 59+18.5
- H. Hub for Twp Line R/W Marker
- I Hub
- J. Stone

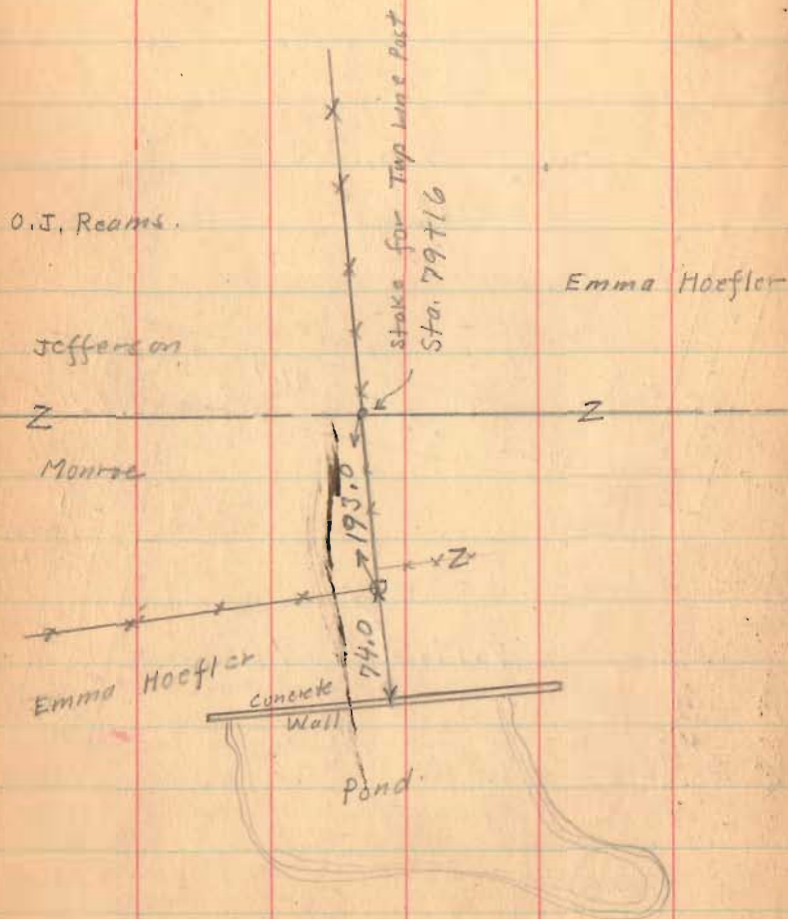
Twp Line  
 stationing

CD = DE = 21125  
 GH = 26.44

1808

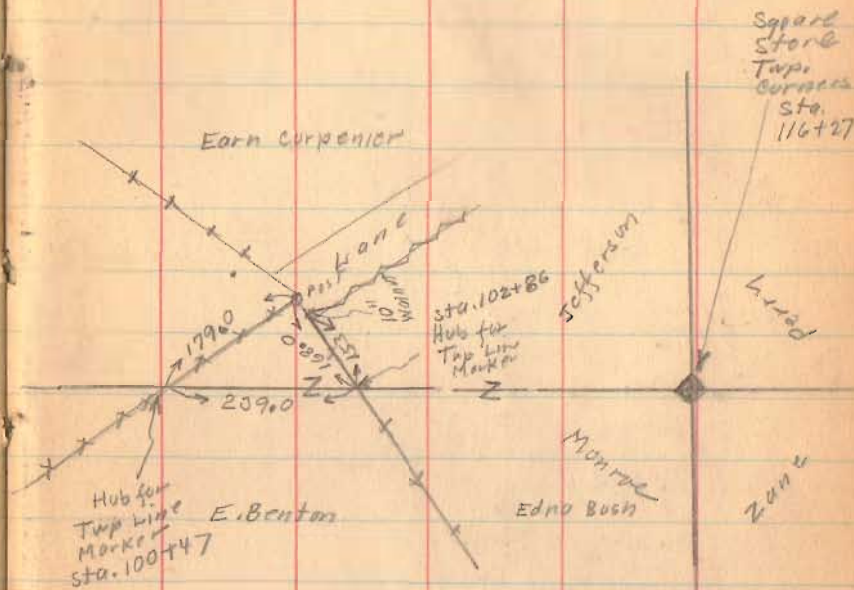
INDEXED ON MAP

Township Line surry  
 Monroe and Jefferson



March 1938

60



(see Page 34)

1808

INDEXED ON MAP