

6-12-36

FB 618

Road 173 (Wade Pike)

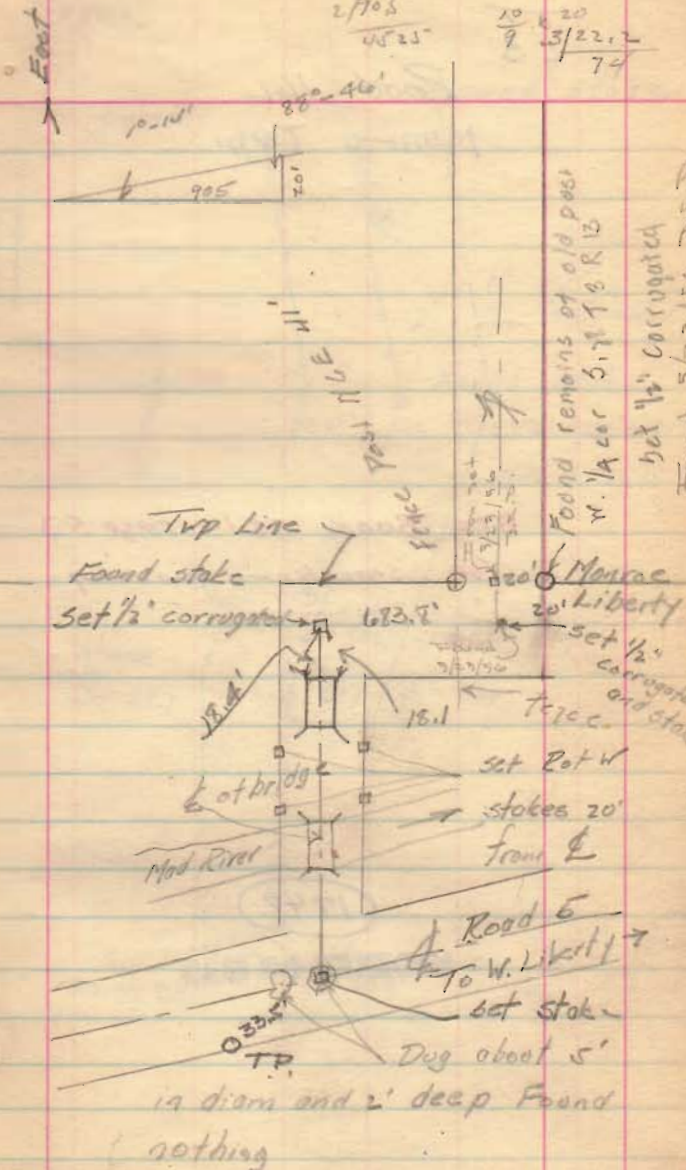
Monroe & Liberty Twp.

1740
INDEXED ON MAP

w.c. 87/22 55.6

$\frac{2705}{4525}$

$\frac{10}{9} \frac{20}{3/22.2}$
74



C.R. 173
Liberty & Morrow Twps.
Logan Co., Ohio

28+49.97 - P.I. - Fd. $\frac{3}{4}$ " ϕ iron

90°-05'-50" Rt.

FB 712

Note curve data

27+19.97 - P.C. Set Mag Nail

19+50.82 - P.O.T. - Fd. R.R. Spike

7+32.48 - P.O.T. - Set Mag Nail

4+22.46 - P.O.T. - Set Mag Nail

0+40.48 - P.O.T. - Set Mag Nail

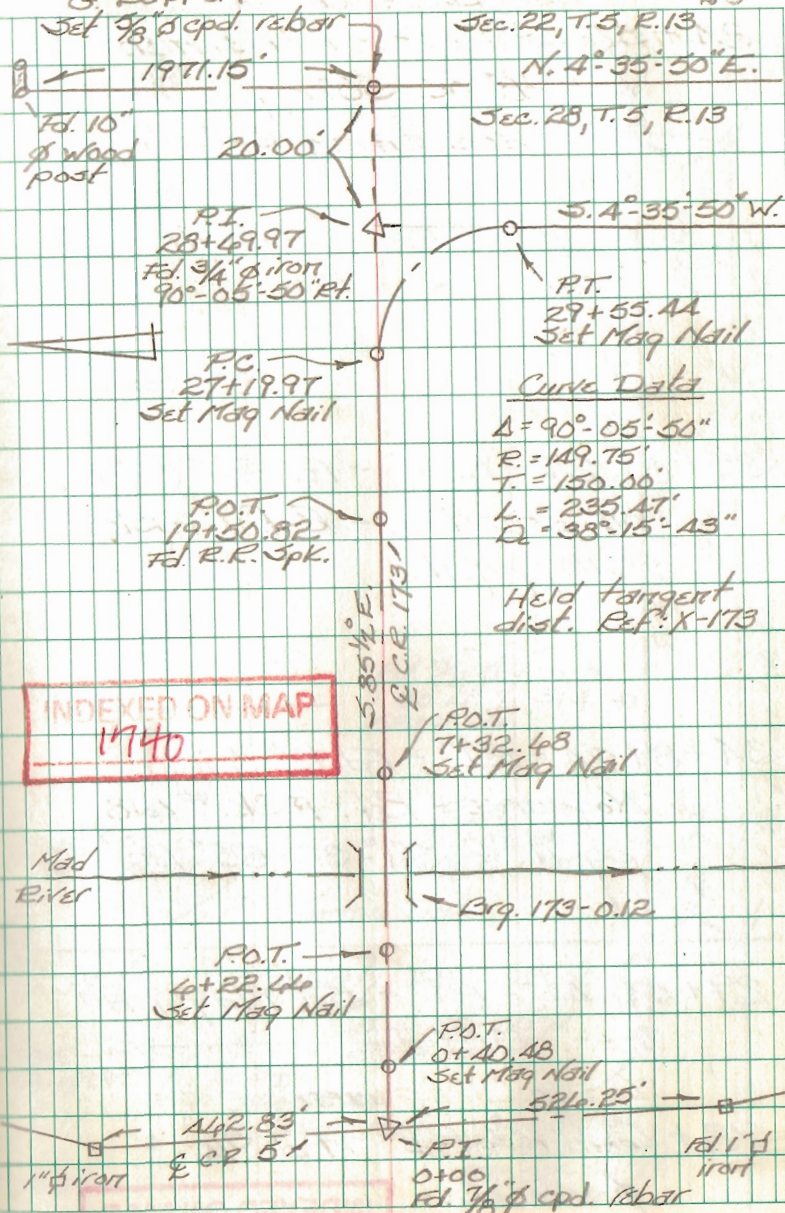
0+00 - P.I. - Fd. $\frac{7}{8}$ " ϕ cpd. rebar

"Logan Co. Engineer". This
iron was set in 1984 site
survey of Brq. 173-0.12.

C. Dill
B. Simmons
G. Dappert

Aug. 05

28



FB 712

C.R. 173
 Liberty & Monroe Twp.
 Logan Co., Ohio

84+56.50 - P.I. - Fd. Hub -
 Ref: F.R.K. 582, pg. 7B -
 Intersection of C.R. 17
 w/ of C.R. 173 - Set $\frac{5}{8}$ "
 ϕ cpd rebar through
 hub.

35+09.24 - P.O.T. - Fd. $\frac{5}{8}$ " ϕ iron
 on sec. line - Ref: F.R.K. #
 4618, pg. 11

34+89.24 - P.I. - Fd. $\frac{1}{2}$ " ϕ iron -
 No curve - Ref: F.R.K. # 4618,
 pg. 11 - $89^{\circ}-32'-55"$ Lt.

29+55.44 - P.T. - Set Mag nail

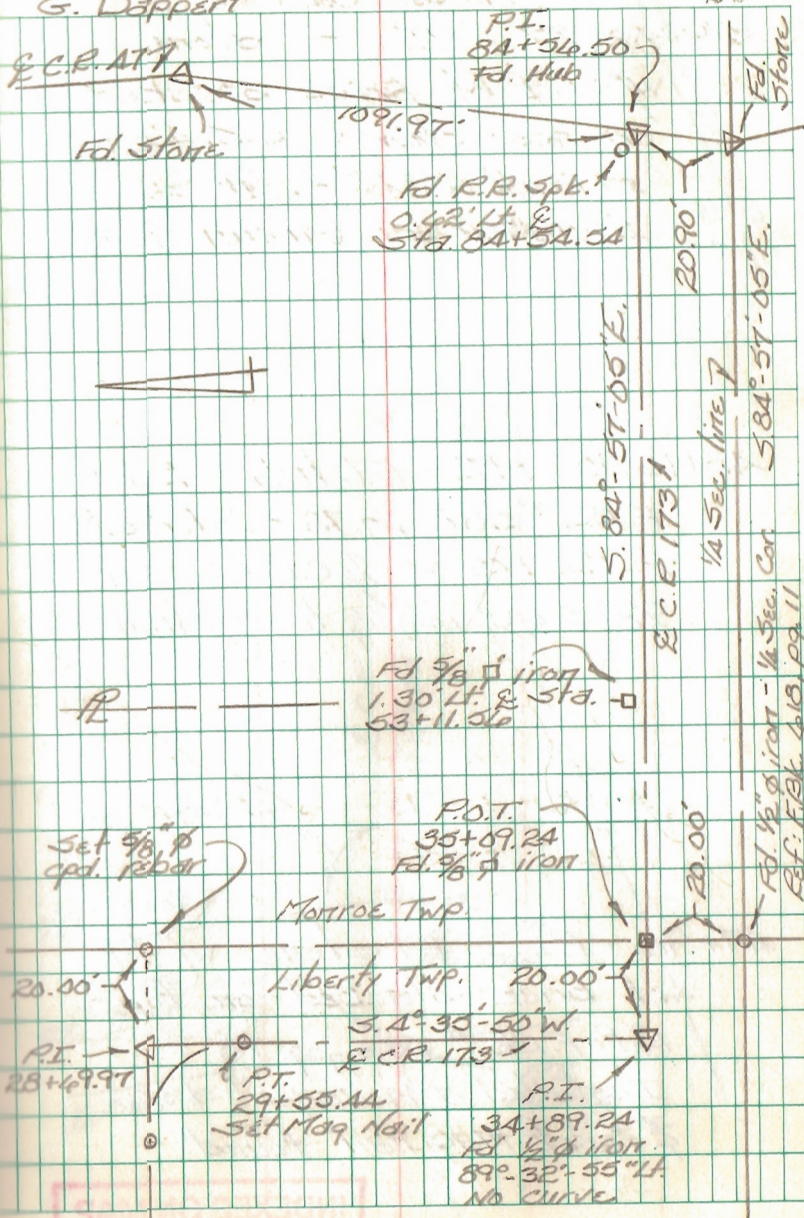
28+69.97 - P.I. - Fd. $\frac{3}{4}$ "
 ϕ iron

INDEXED ON MAP
 1740

C. Dill
 B. Simmons
 G. Dappert

Aug. 05

29



FB 712

Intersection C.R. 173 w/ C.R. 47

Morros Twp.
Logan Co. Ohio

59+08.87 - P.I. - Fd. stone

w/ lots of brick stacked
on top - shown as Sta. 59+09

in F.R.K. 582, pg. 78 -

Installed a monument box

48+14.90 - P.I. - Fd. hub - Ref:

F.R.K. # 582, pg. 78 - Intersection

& C.R. 173 w/ & C.R. 47 - Set

3/8" ϕ cpd. rebar through hub.

47+96 - P.I. - Fd. stone w/ lots
of brick stacked on top -

Ref: F.R.K. # 582, pg. 78 -

Installed a monument box
& reset mag nail found.

INDEXED ON MAP
1740

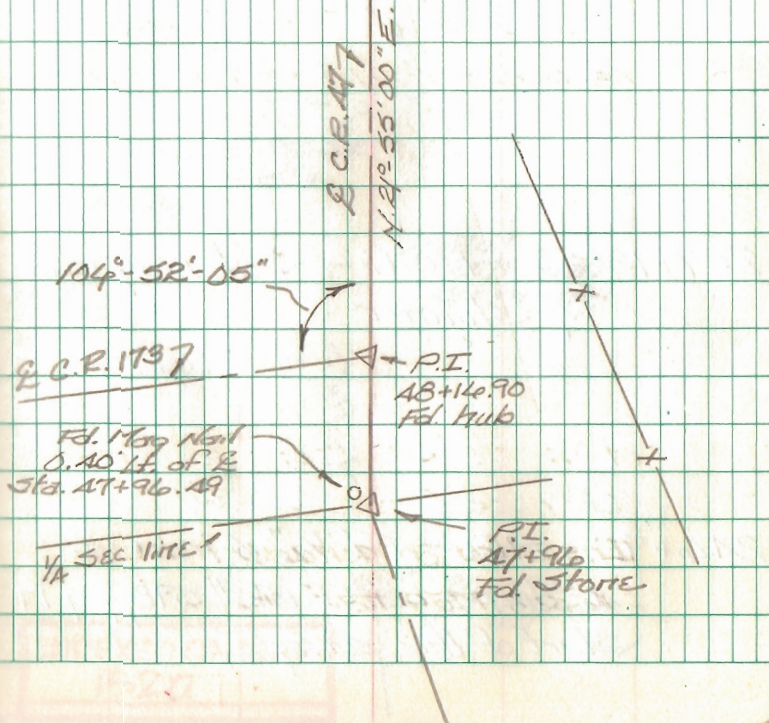
C. Dill

Aug. 05

B. Simmons

G. Dappert

Dug large hole
in this area
in search of
a hub - no luck



30

C.R. 1
Pellefontaine
to

P.I.
59+08.87
Fd. stone

C.R. 47
N. 24° 55' 00" E.

104° 52' 05"

C.R. 173

P.I.
48+14.90
Fd. Hub

Fd. Mag Nail
0.40 ft. of &
Sta. 47+96.49

1/4 Sec. line

P.I.
47+96
Fd. Stone