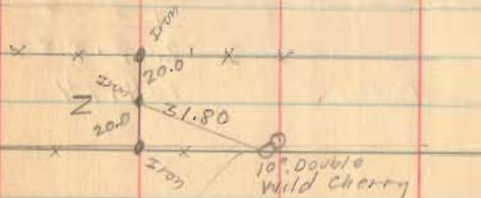


Military Survey (Mansie Tap)

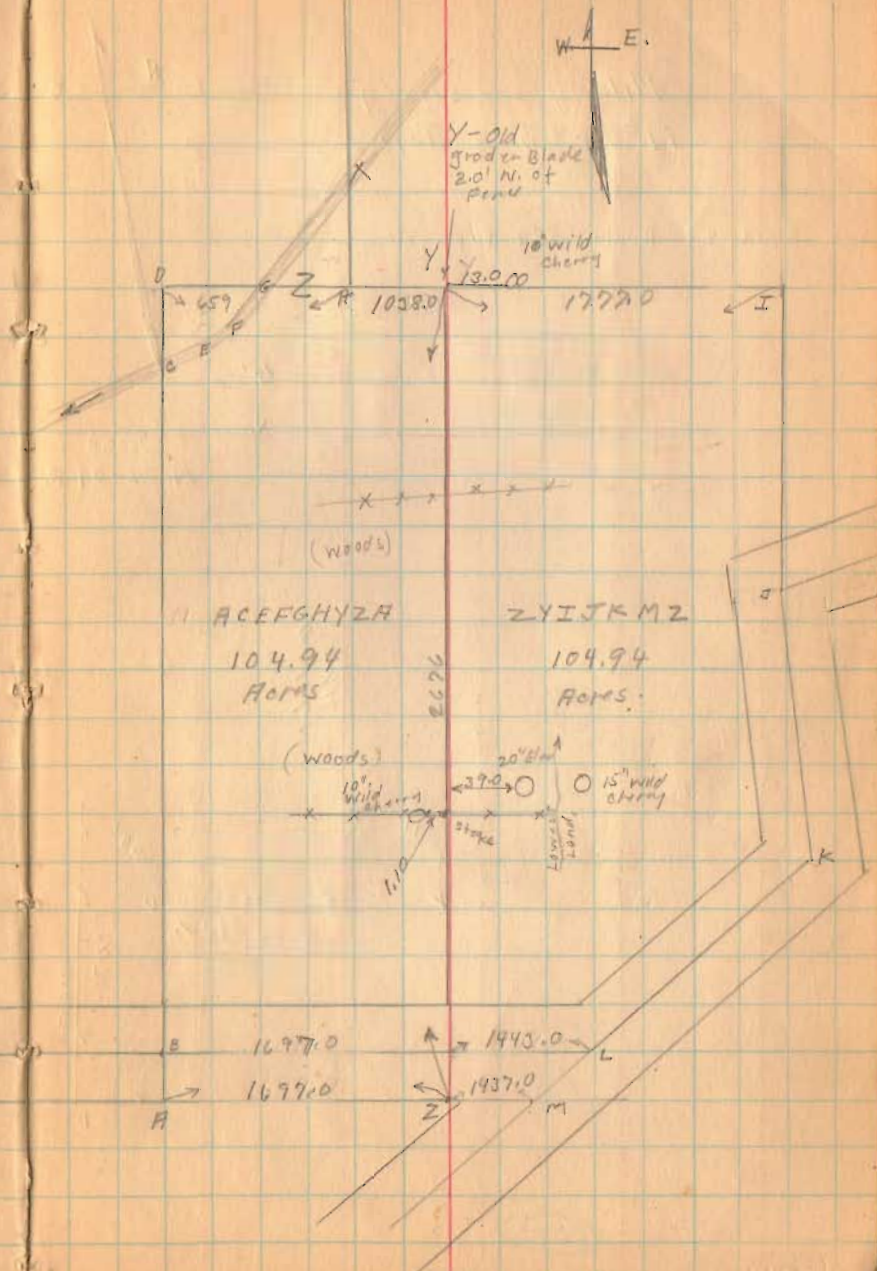
A D H Y Z A = 104.11
 C D G F E C = -1.13
 102.98
 G X H G = +1.96
 104.94



Witness to Z

1670

INDEXED ON MAP



A C E F G H Y Z A
 104.94
 Acres

Z Y I J K M Z
 104.94
 Acres

156-383

1935

37

Milroy To Hartzler
Monroe Township 1.13 acres

The following described land in Section 22 Town 5 Range 13 of between the Miami River Survey and being in Monroe Township, Logan County, Ohio.

Beginning at a stone in N. E. corner of Section 22 thence with the North line of Section 22 N. 85°-39' W. 2815 feet, N. 84°-38' W. 659 feet to a post at M. Baldwin's N. E. corner, ^{thence} with the North line of Section 22 S. 84°-38' E. 312.0 feet to the center of the New Channel at Mad River, thence with the center of New Channel at Mad River S. 41°-30' W. 78.0 feet; S. 48°-30' W. 120.0 feet; S. 70°-00' W. 200.0 feet to Baldwins East line; thence with Baldwins East line N. 04°-12' E. 239.0 feet to the place of beginning said tract containing 1.13 acres more or less and being that land North and West of the New Channel at Mad River and being the same tract as surveyed July 1935 as shown in Logan County Surveyor's Records Book No. 584 Pages 55 to 57.

1670

1D-1

INDEXED BY

1935

30

Hartzler To Milroy

Monroe Township 1.96 Acres

The following described land in Section 23 Town 5 Range 13 of between the Miami River Survey and being in Monroe Township Logan County, Ohio.

Beginning at a stone at S. E. corner of Section 23, thence with the South line of Section 23 N. 85°-32' W. 2815.0 feet to a post at F. N. Johnson's S. W. Corner said Post being the beginning point of this survey, thence with said Johnson's West line N. 03°-53' W. 500.0 feet to center of the New Channel of Mad River, thence with the center of the New Channel of Mad River S. 34°-00' W. 563.0 feet to South line of Section 23, thence S. 84°-38' E. 347.0 feet to the place of beginning said tract containing 1.96 acres more or less and being the land lying South and East of the New Channel of Mad River and being the same tract as surveyed July 1935 as shown in Logan County, Surveyor's Records Book No. 584 Pages 55 to 57.

INDEXED ON MAP

1670 1D2
19