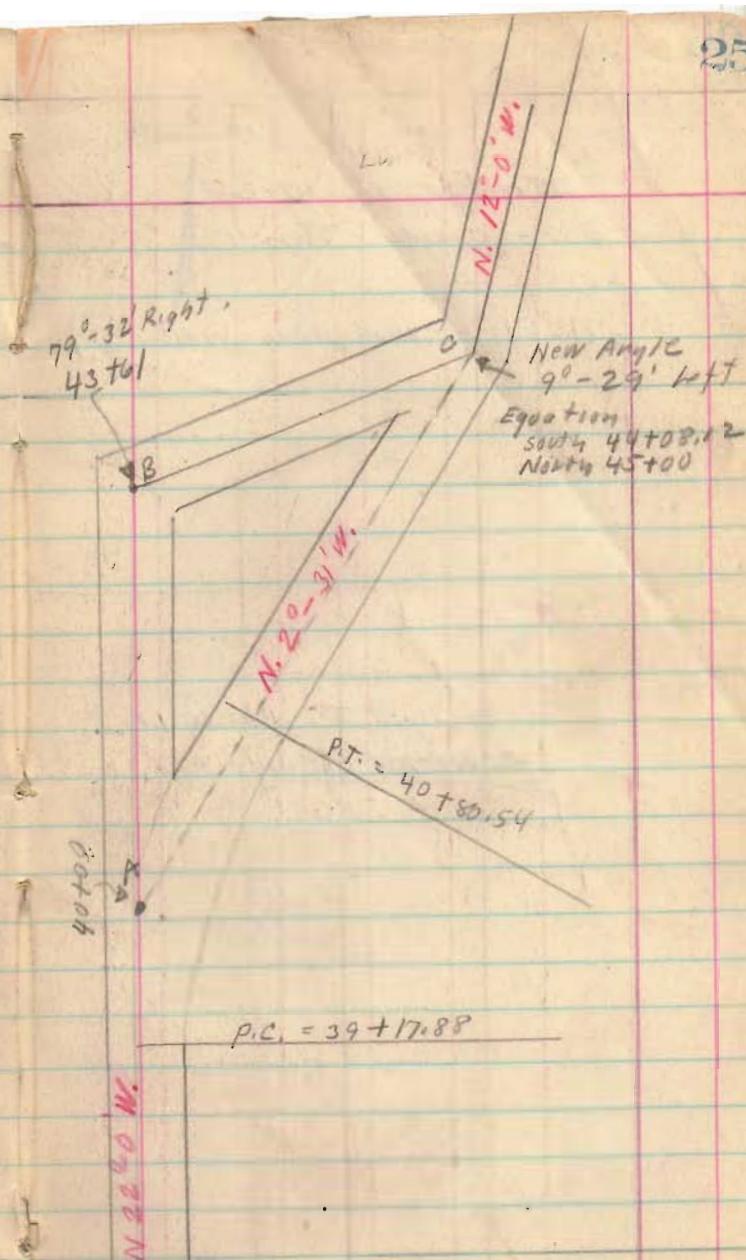


Road 147
See Page 32
April - 9 - 1938

$$\begin{aligned} AB &= 361 \\ BC &= 139 \\ AC &= 409.7 \\ P.I. &= 40+00 \\ P.C. &= 39+17.88 \\ P.T. &= 40+80.54 \\ L &= \frac{100 \Delta}{D} = 162.36 \\ L &= Arc = 162.66 \\ T &= 82.12 \\ R &= 478.34 \\ E &= 7.00 \\ \Delta &= 19^{\circ} 29' \\ D &= 12^{\circ} \end{aligned}$$

1557
INDEXED ON MAP



Road 147

41+00

Nail

37+00

31+00

27+00

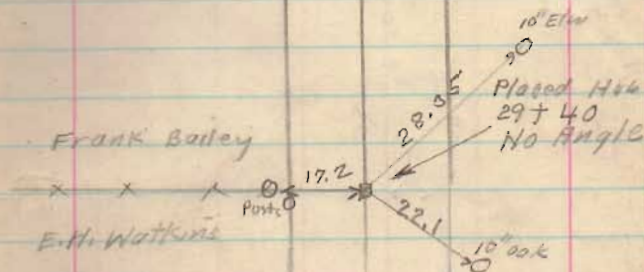
21+00

17+00

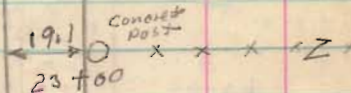
7-22-36
Restok

Lane 36+50

N 22°-0' W



♀ Wood
Bridge
27+71



INDEXED ON MAP

53+99 North 4th East

Road 147

184.6
105.1
289.7
Jefferson
Mans

58+51 Sta
58+51.1
from E
on Top

Road 27
LW

Top Line
Surrey Soc
Page 29

See Book 573
Page 59 for
Top Line Surrey

S. 68 W
Noodle
S 67-50 W

55-193
+ Roadway

S 55-0-0 W

51+00

47+10

Frank Bailey
P.A. Rooms

44+95 South 4th East

43+61 North only

43+61
Placed Hub
79°-32'
Right

N 22-0-0 W

N 57-32 E
N 58 E

See Page
25 for
cut
off.

54+95.7
NO. 2 P

97.7

53+98
Placed Hub
91°-14' Left

103.4
N Angle
Iron
53+62.5

Sta 59+88.5
from E Road
NO. 2 P
on Top line.

N 20-0-0 W

47+14
Placed Iron
8°-50' Left

49+75 Top Line?

S. 89-05' E.

O.I. Rooms
Hub
P.A. rooms

Barr

46+21
116.90



45+30
62.75
N 40 E

48.0
38.52
N 25 W

45+00
Placed Iron
69°-32' Left

1557

INDEXED ON 100

Road 147

(Top line Sorry)
See Page 29
(See Book 573 Page 34)

77+00

71+00

67+00

63+00

59+00

57+68

South Only

1557

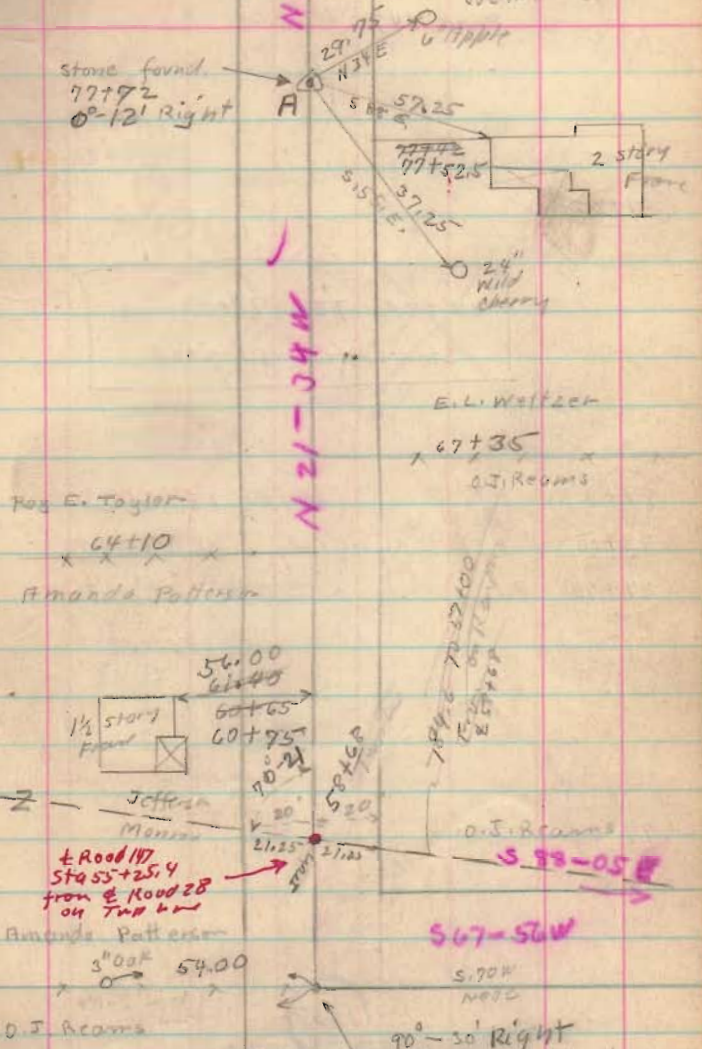
INDEXED ON MAP

July-23-1936
cloudy - 8001
F. Wright
G. Williams
J. M. ...
MIX TOMES
See Roberts

stone found.
77+72
0°-12' Right

N 21-12 W

N 21-34 W



Pos E. Taylor

64+10

Amanda Patterson

1/2 story Frame

56.00

60+65

60+75

Jefferson Manser

+ Road 147
57+55+25.4
from E Road 28
on Top line

Amanda Patterson

5' oak 54.00

O.J. Reams

E.L. Welfer

67+35

O.J. Reams

O.J. Reams

567-56 W

5.90 W
NOTE

90°-30' Right
57+68 Found Stone on

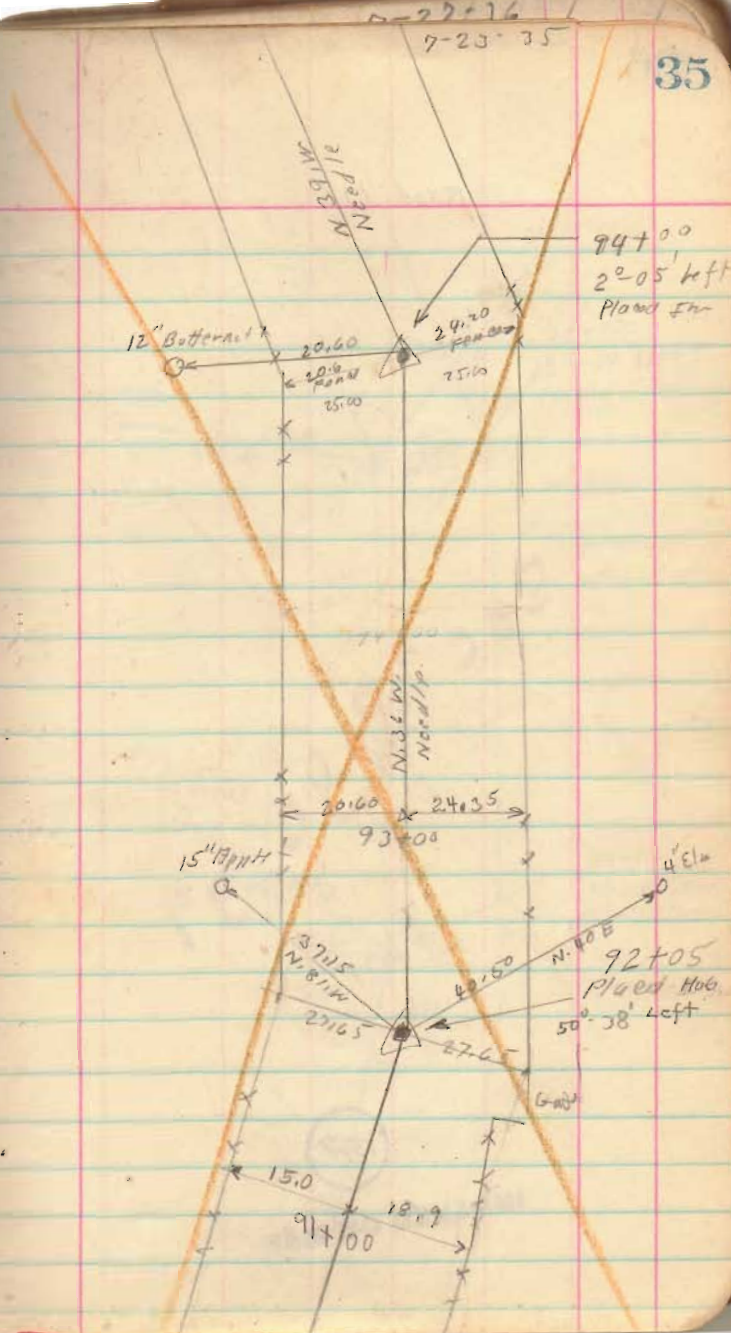
Ground (Not Set) Mr. Reams says.
This stone Used by Henry Moore
for Corner. Set Stone on end on 27th

Road 147

See
Page 39

1557

INDEXED ON MAP

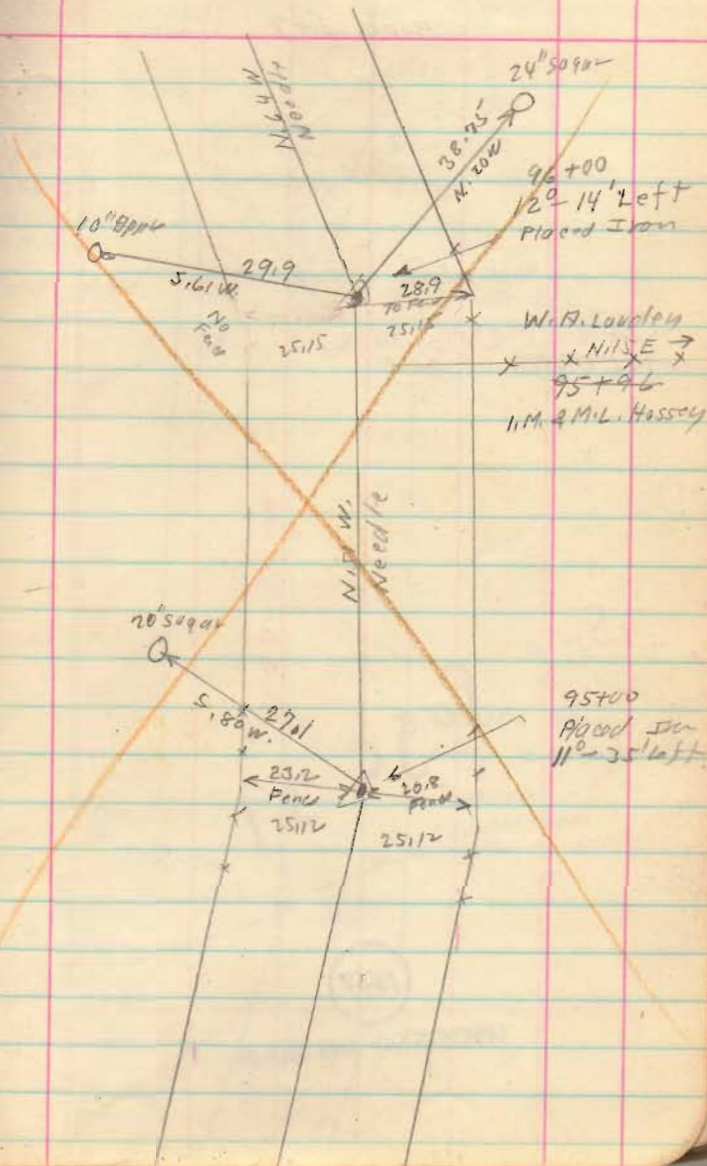


Road 147

see
page
39

1557

INDEXED ON MAP



Road 147

New Line
see Page 34 for old line

88+35 To 98+00 stakes 25' from E

N 13-32 E

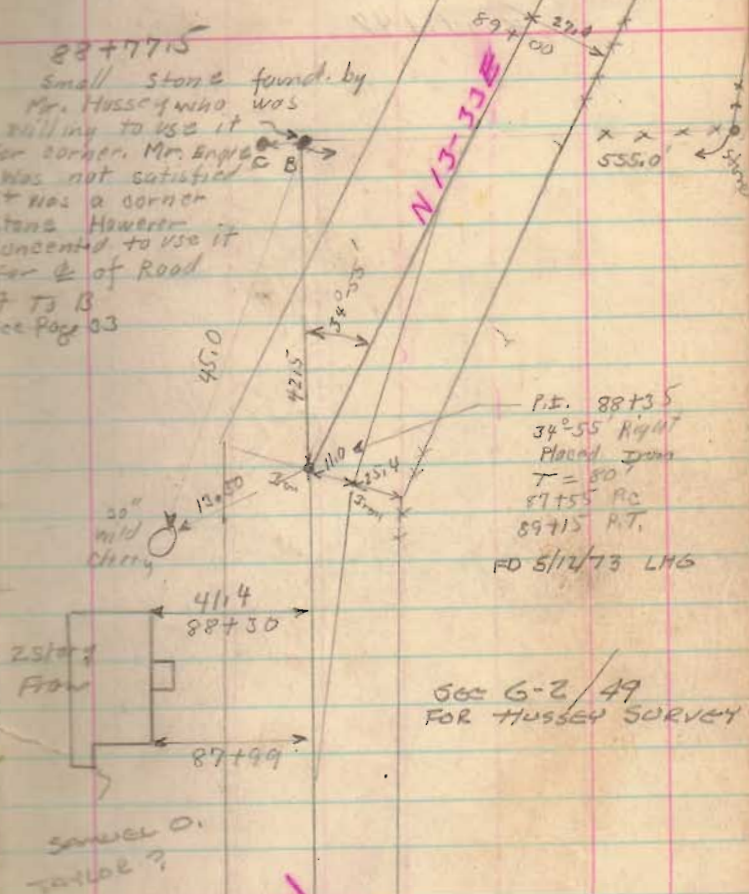
1557

INDEXED ON MAP

7-27-36

Stone C found
July -28-1936
6" x 3"
50 West of Stone B.

88+77.5
Small stone found by
Mr. Hussey who was
willing to use it
for corner. Mr. Engle
was not satisfied
it was a corner
stone. However
concentrated to use it
for E of Road
A T B
See Page 33



P.T. 88+35
34°55' Right
Placed Iron
T = 80'
87+55 P.C.
89+75 P.T.
FD 5/12/73 LMS

666 G-2/49
FOR HUSSEY SURVEY

Samuel O.
Taylor ?

N 21-22 W

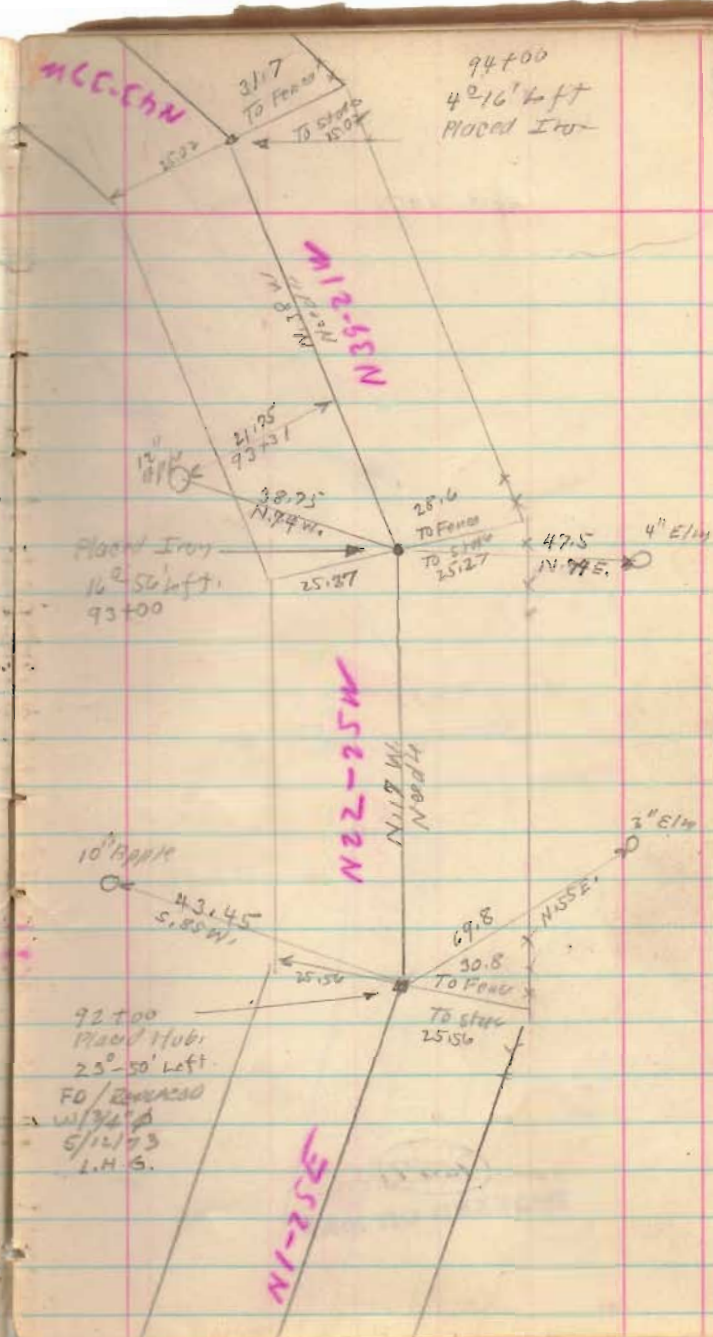
Road. 147

W-17-E

W-17-W

1557

INDEXED ON MAP



Road 147

N 43-37W

N 43-37W

1557

INDEXED ON MAP

N 43-37W

7-28-30

N 49-12W

N 49-12W

28.15
15° 11' 11" S 35° WPlaced Hubs
96+00
11' 0" left.

N 49-12W

N 49-12W

33.6
70 Feet

25.03

N 43-37W

48.95
N 15 1/2° E5-25' left
95+00
Placed HubKoudett
x x
95+82
Hussey

2" Walnut

24" 5090

36.4
N 15 1/2° E

Road 147

N 91-16 W

1557

INDEXED ON MAP

101 + 21
Stone
See Page 37
87255'R.R. Spike
113 + 37
See Page 38

N 113-39 E

Road 153
See Page 38

N 91-16 W

N 25 W
Needle

2519

2519

97 + 24
Hub Pinned
See Page 37
14° 04' left

Engle

Hussey