

S.H. 607 Monroe^{9th} zone Twp.
State Route 287

Moorechee Pike

Free Turnpike Record No. 5 Page 479

60' From { Ludlow To { George Smith Corner
 { Road No. 1 { Road No. 28

West Middleburg Pike

Free Turnpike Record No. 5 Page 393^{9th} 394

60' Page 394

50' Johnson Pike Road 28 To
Church Corner
Road Record 5 Page 452

← Old County Road No. 15 from
West Liberty To Union Chapel Church.

Union Chapel church To Middleburg
old Co. Road No. 41

← Middleburg To S.H. 235 old
County Road No. 119

(1467)
INDEXED ON MAP

S.H. 607

22+00 Mon.

17+00 Mon.

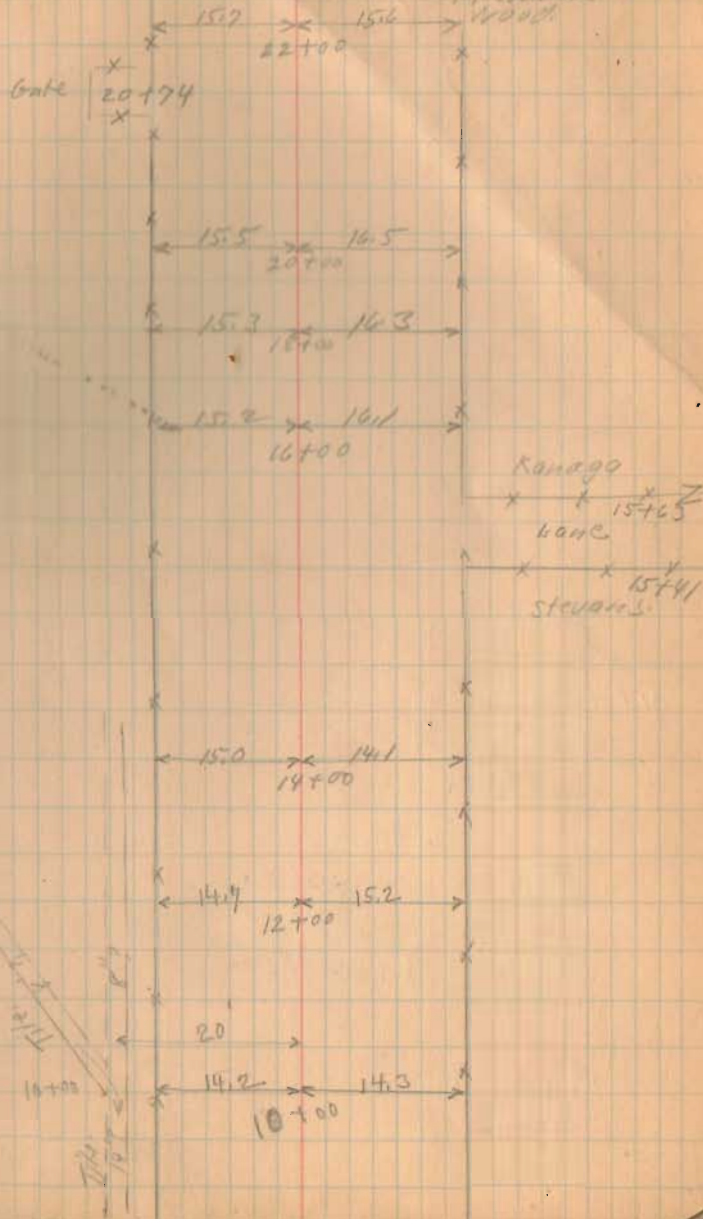
12+00 Mon.

7+00 Movement

1467
INDEXED ON MAP

DEC-12-1931
Clear - (Fog AM)
Wright
McKinnon
Warr
McAdams
Wood

14



S.H. 609

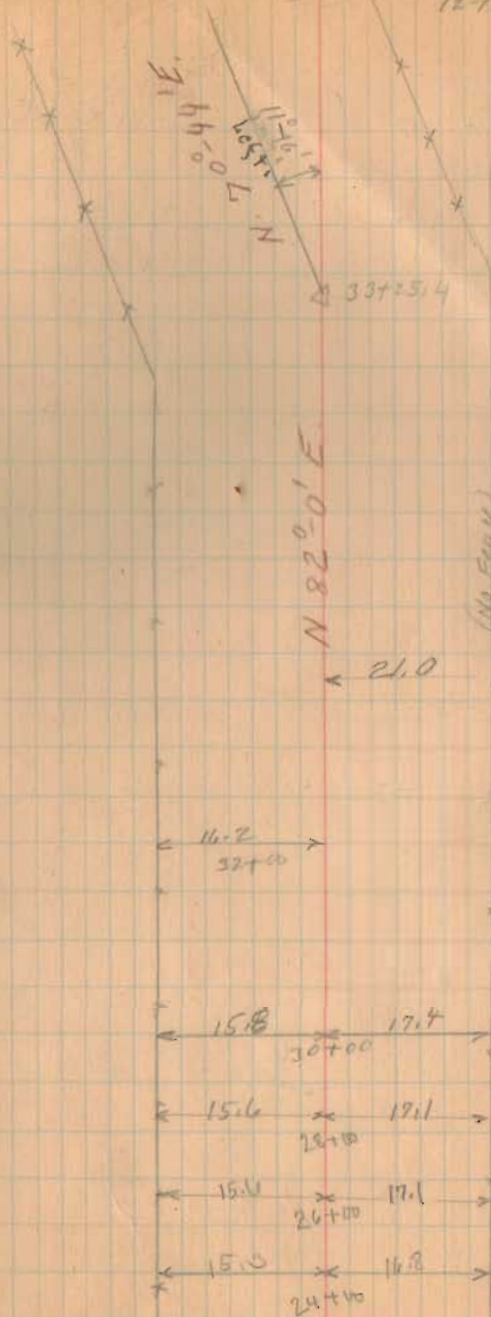
31+00 Mon.

1867
INDEXED ON MAP

27+00 Mon.

12-12-51

15



Δ 11°-16' left.
 P.L. 33+25.4
 R. - 954.93
 D - 6°
 T. - 94.19
 E. - 4.63
 L. - 187.79 (Hrc.)
 P.C. - 32+31.21
 P.T. 34+19



ETWIN

No. Fence

(Lane)

Header

31+52
Kanaga

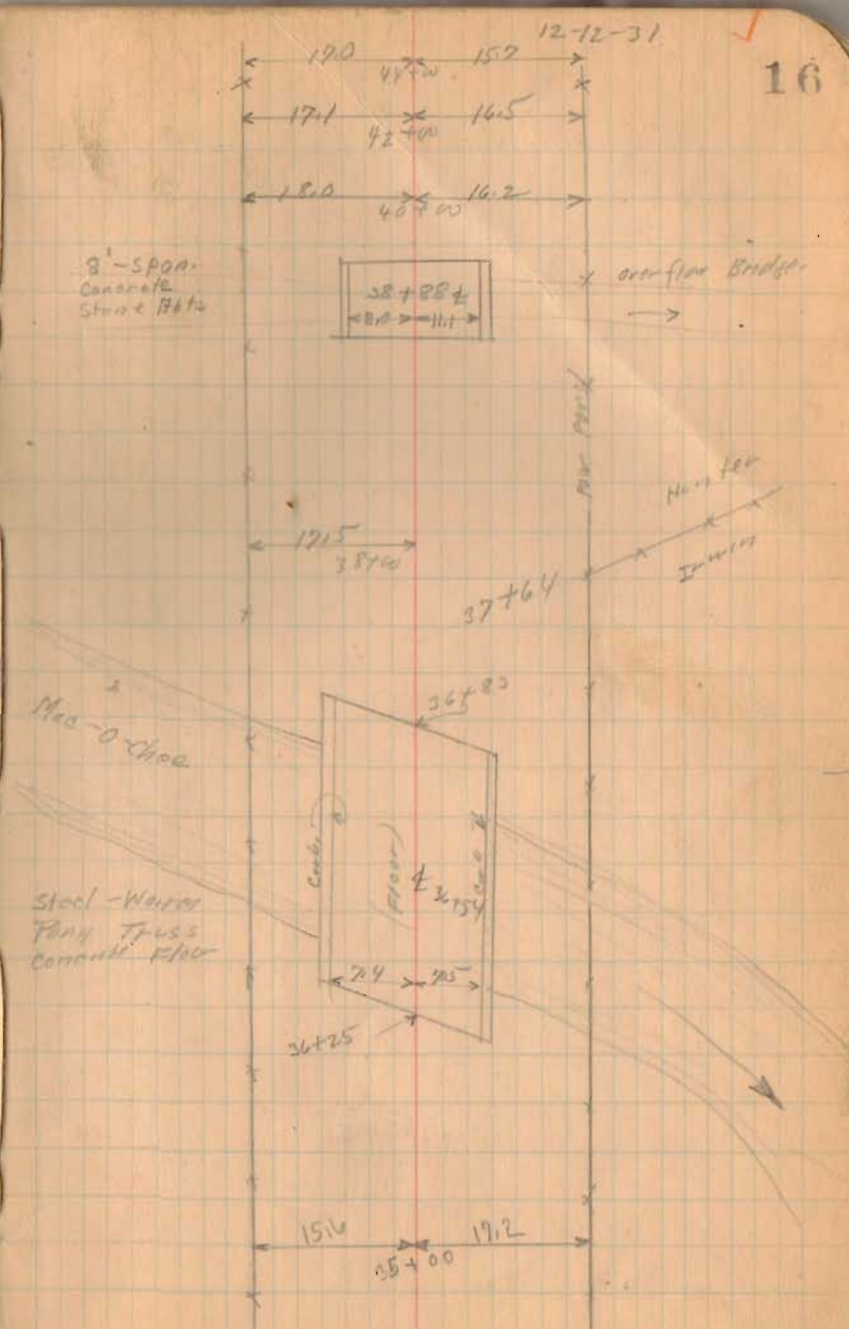
S.H. 607
45+00 Mon.

40+00 Mon.

1467
INDEXED ON MAP

35+00 Mon.

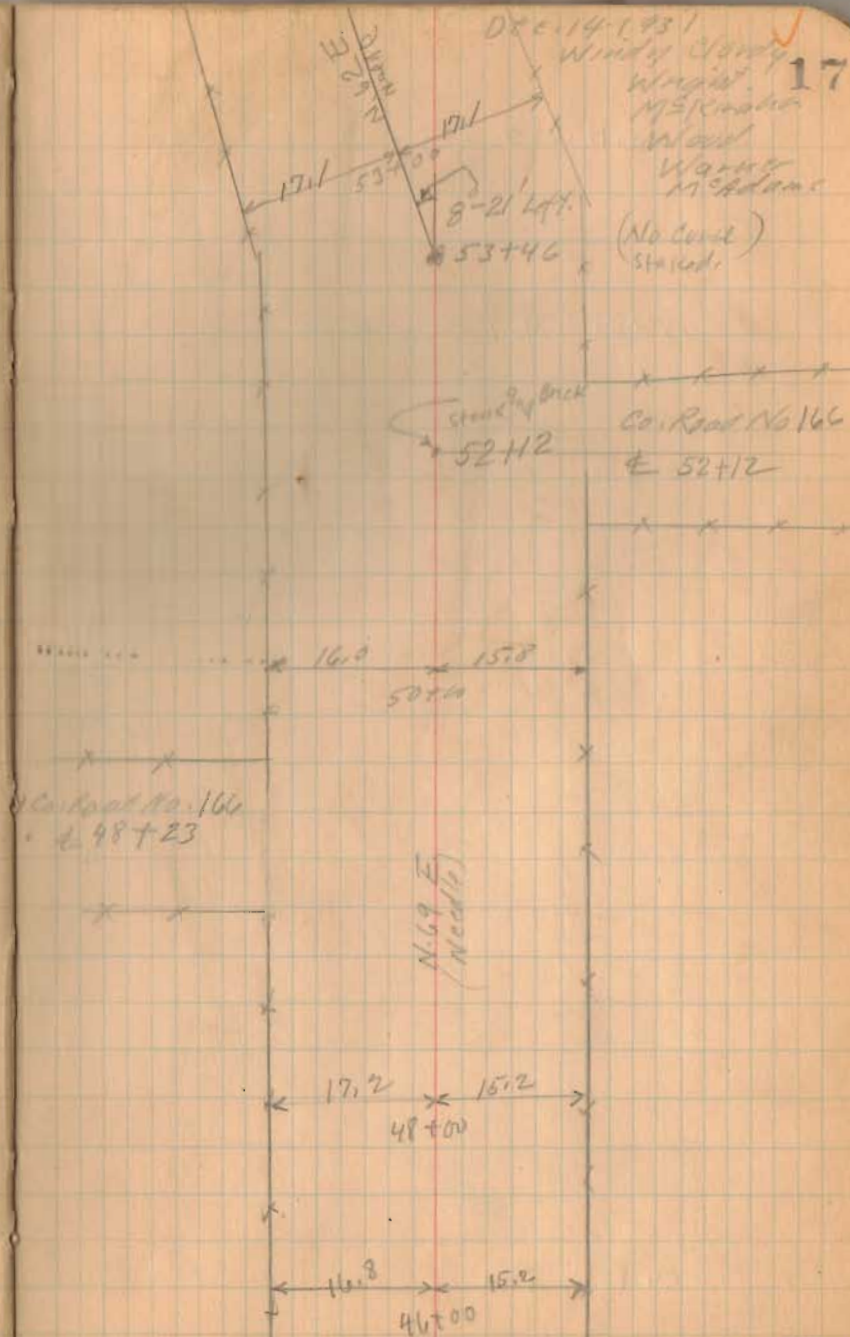
16



S.H. 607

50+00 Mon

1467
INDEXED ON MAP



S.H. 607

65+00 Mon

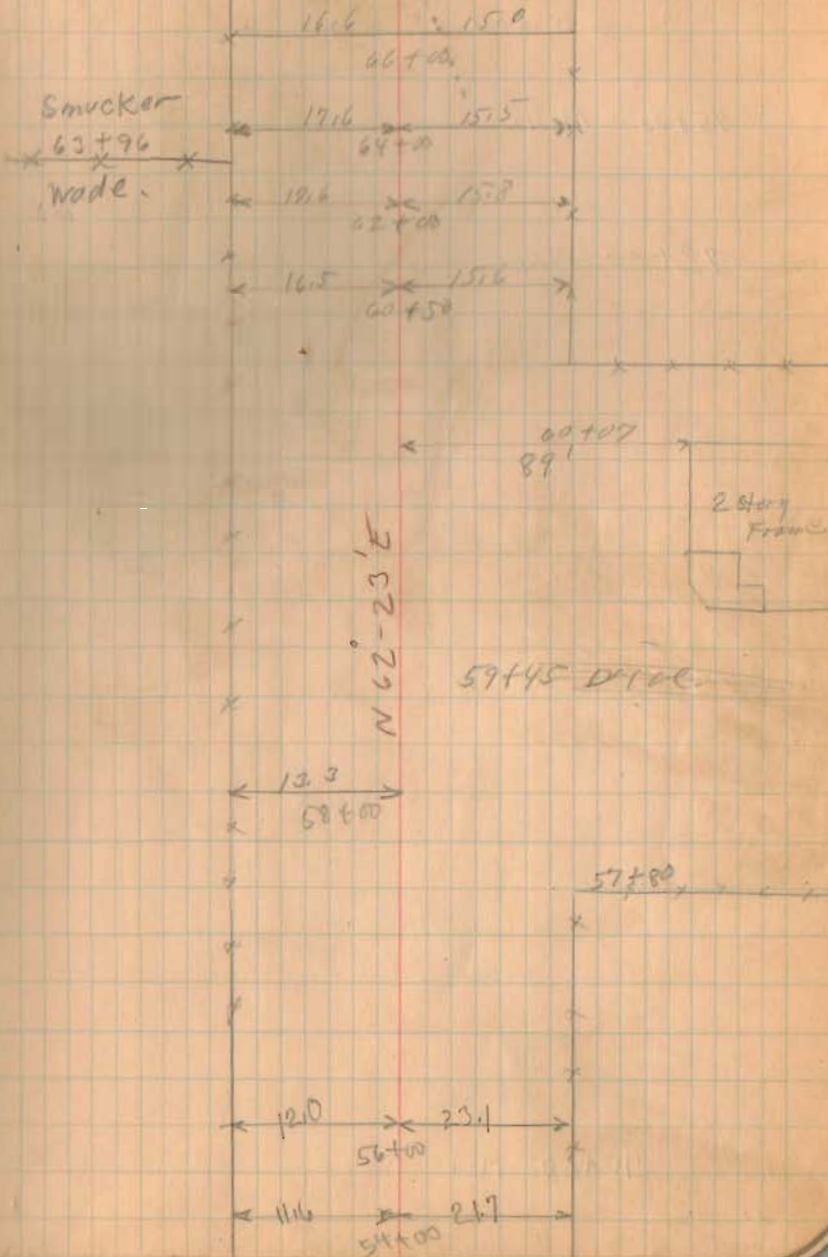
60+50 Mon

1467
INDEXED ON MAP

56+00 Mon

12-14-31

18



C.H. 400

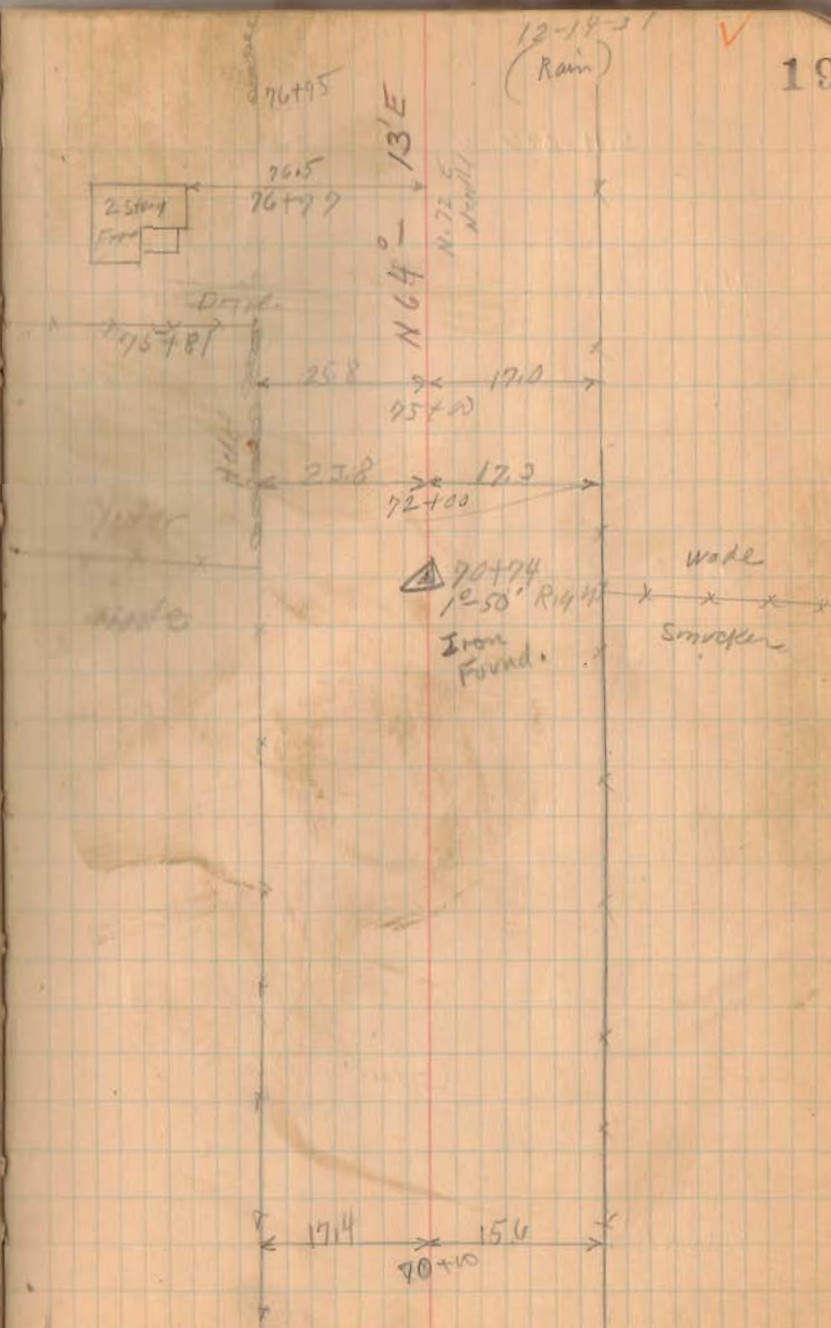
75+00 Mon.

72+00 Mon.

6467
INDEXED ON MAP

70+00 Mon.

19



5.11.617

90+00 Mon.

85+00 Mon.

1467
INDEXED ON MAP

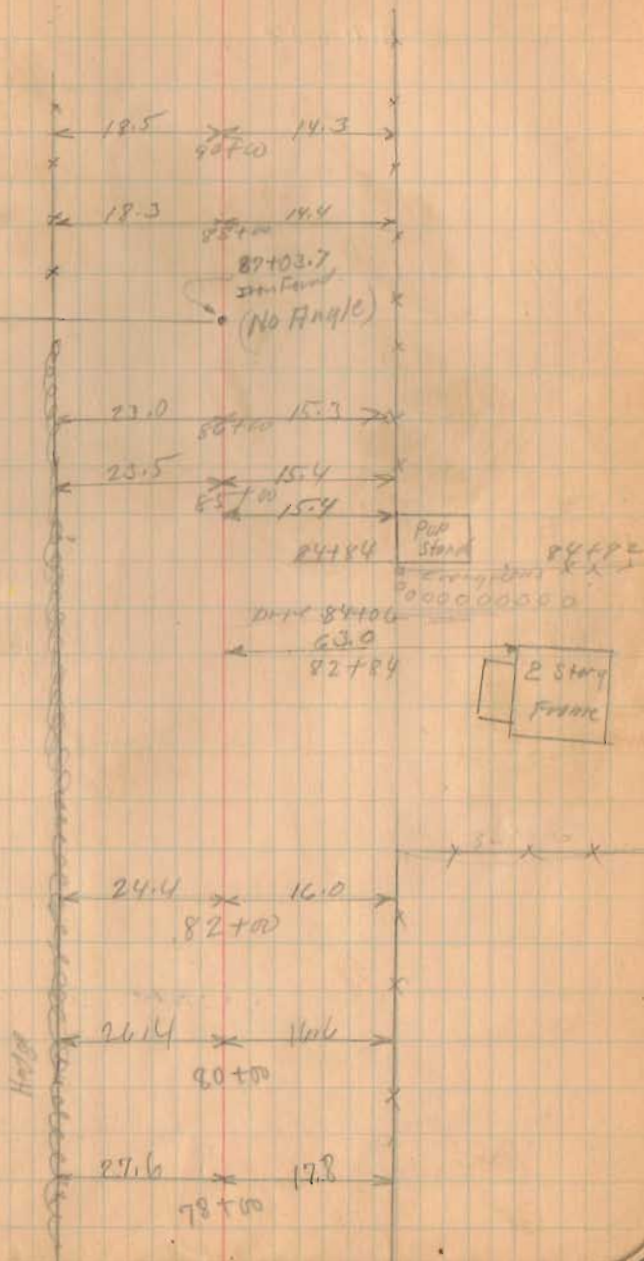
80+00 Mon.

12-11-31

20

Davis

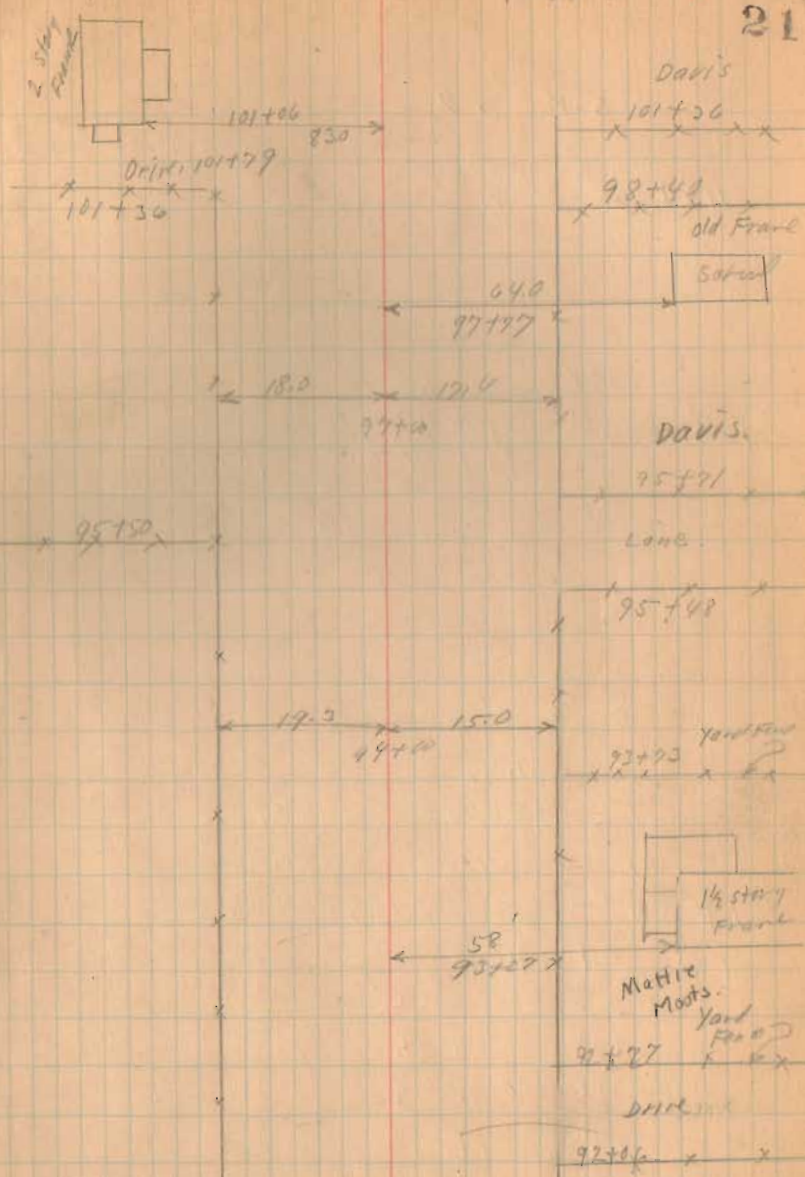
Yoder



S. H. 607

97+00 Mon.

1467
INDEXED ON MAP



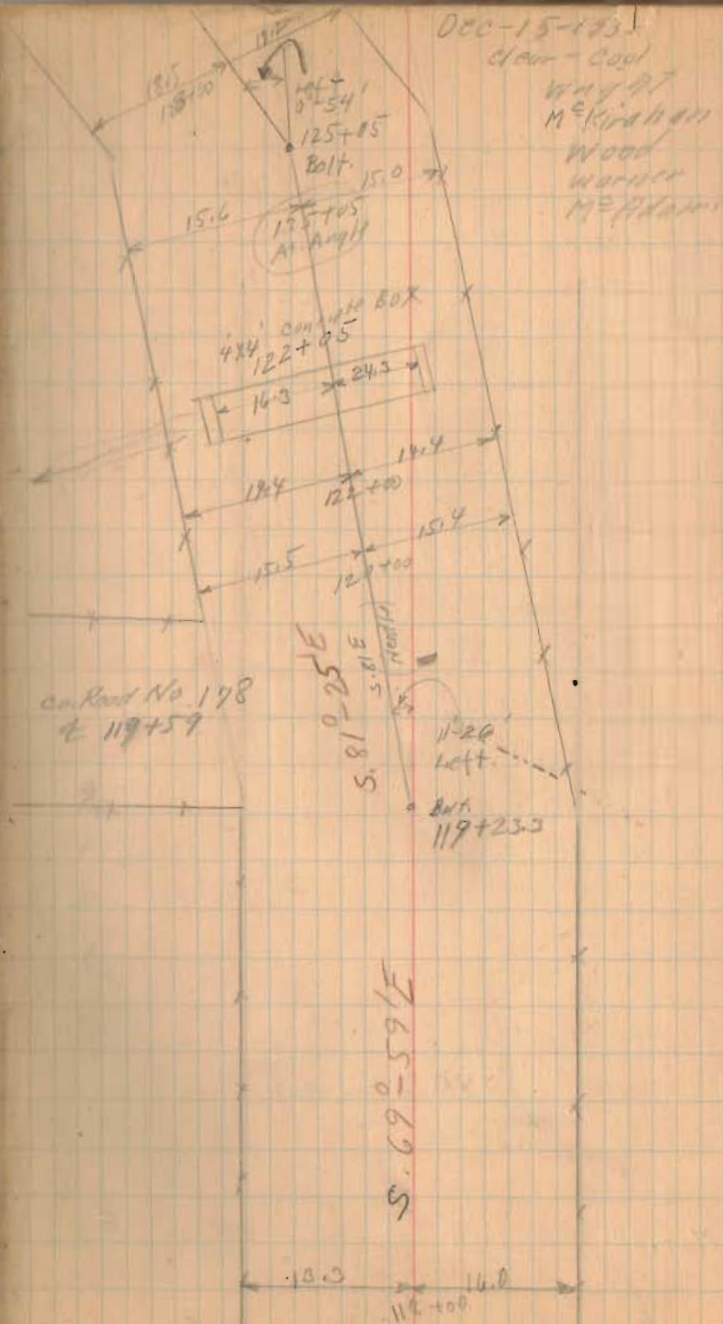
S.H. 607

125+05 Mon.
(90° from Back side)

120+00 Mon.

1467
INDEXED ON MAP

118 Mon.



S.H. 607

145+00 Mon.

140+00 Mon.

134+00 Mon.

1467

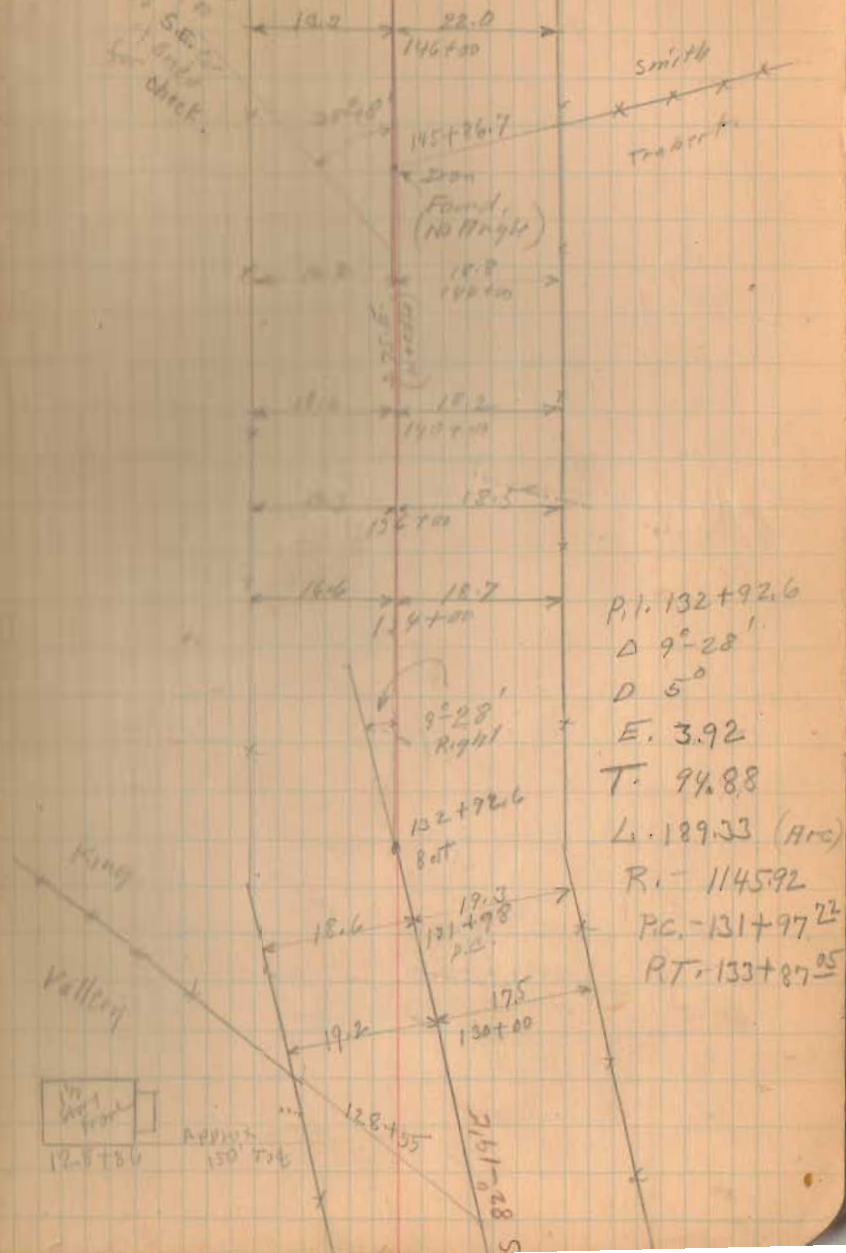
INDEXED ON MAP

131+00 Mon. 131+00 Mon.

12-15-51

24

Angle Noded
140+00
To S.H. 607
+ Grid
for check.

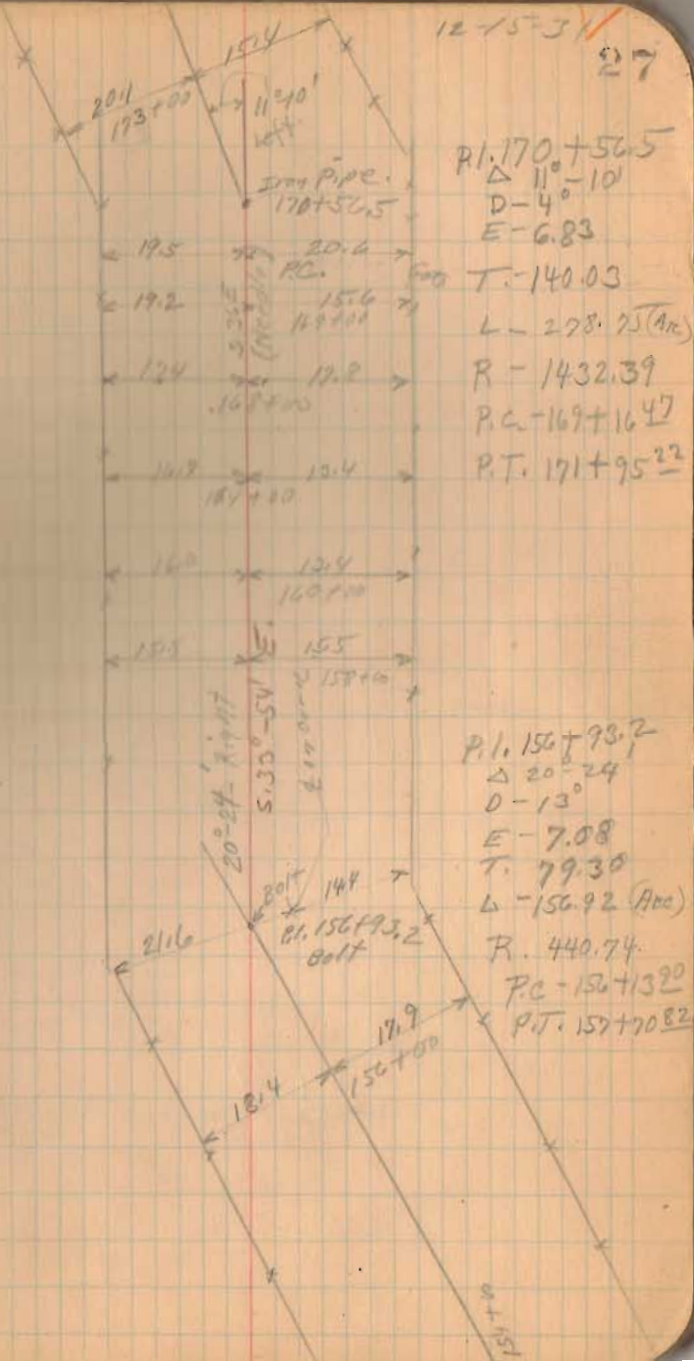


173+00 Mon. S.H. 607
169+00 Mon.
166+00 Mon.

161+00 Mon.

158+00 Mon.

1467
INDEXED ON MAP



S.H. 607

256+00 Mon.

254+50 Mon.

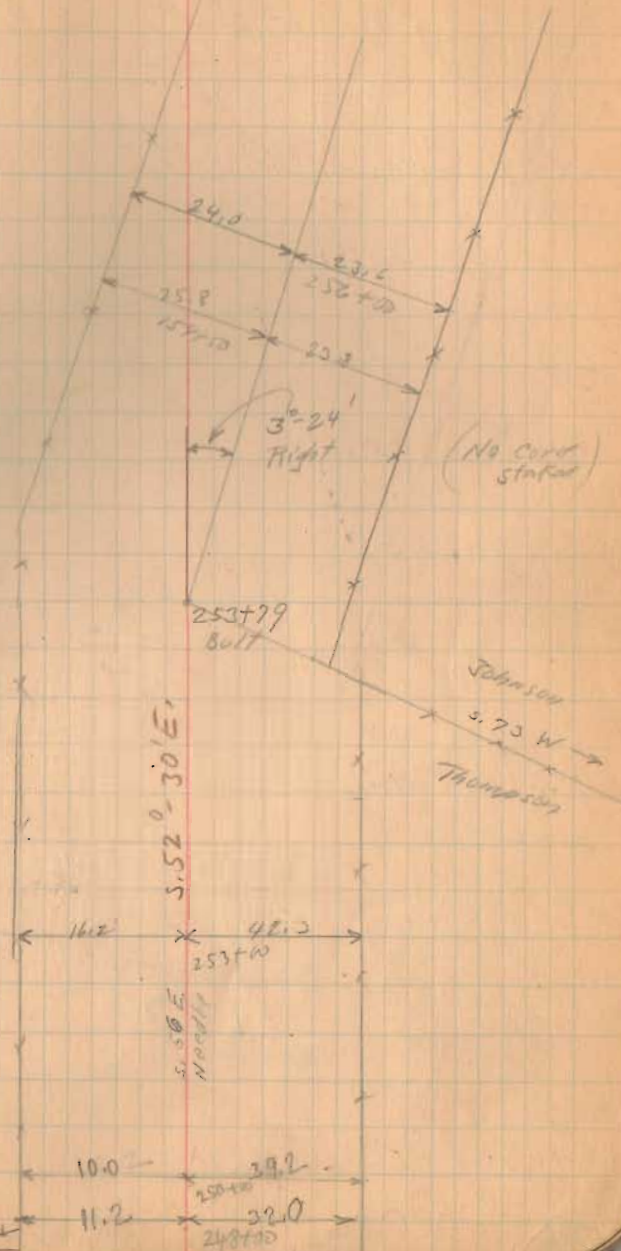
253+00 Mon.

1467
INDEXED ON MAP

250+00 Mon.

12-17-31

33



S. H. 607

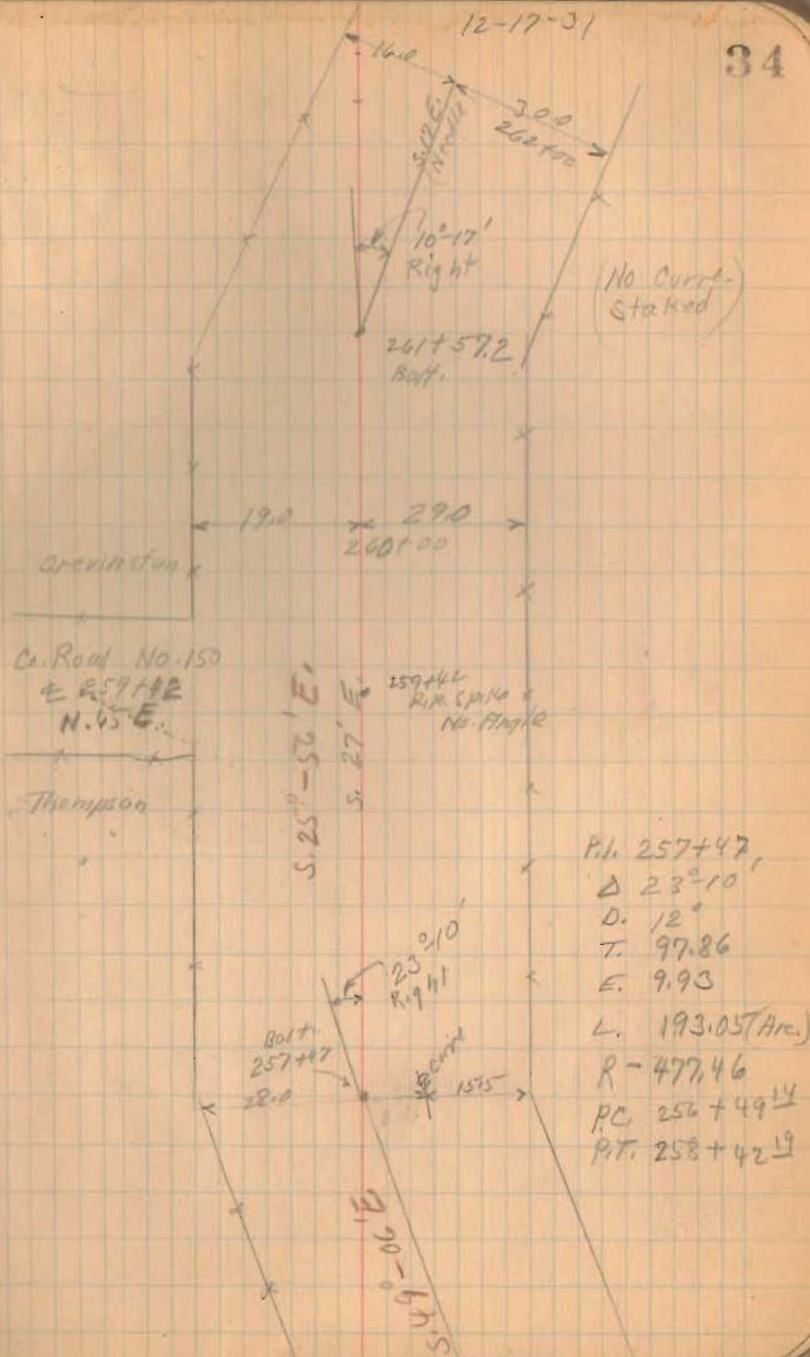
262+00 Mon

261+00 Mon.

259+00 Mon.

1467
INDEXED ON MAP

34



S.H. 607

2917+00 Mon.

286+00 Mon.

281+00 Mon.

276+00 Mon.

271+00 Mon.

267+00 Mon.

1467
INDEXED ON MAP

12-17-31 3

35

16.3 x 28.7 x
290+00
288+21 x
Gardner
287+65 x

Corrensia
Notostima

2 story
Frame

60.3
286+75
286+124
Dist 286+16

15.6 x 27.8 x
292+00

280+10

Mud Flat
Pond

17.0 x 25.9 x
278+10

278+25

18.2 x 23.3 x
274+00

Notostima

271+62

Johnson

S. 15°-39'E.

17.6 x 23.9 x
270+00

Pond

280+00

267+00

16.7 x 24.6 x
266+00

S.H. 607

367+52.5 (90° from Backsight)

363+00 Man.

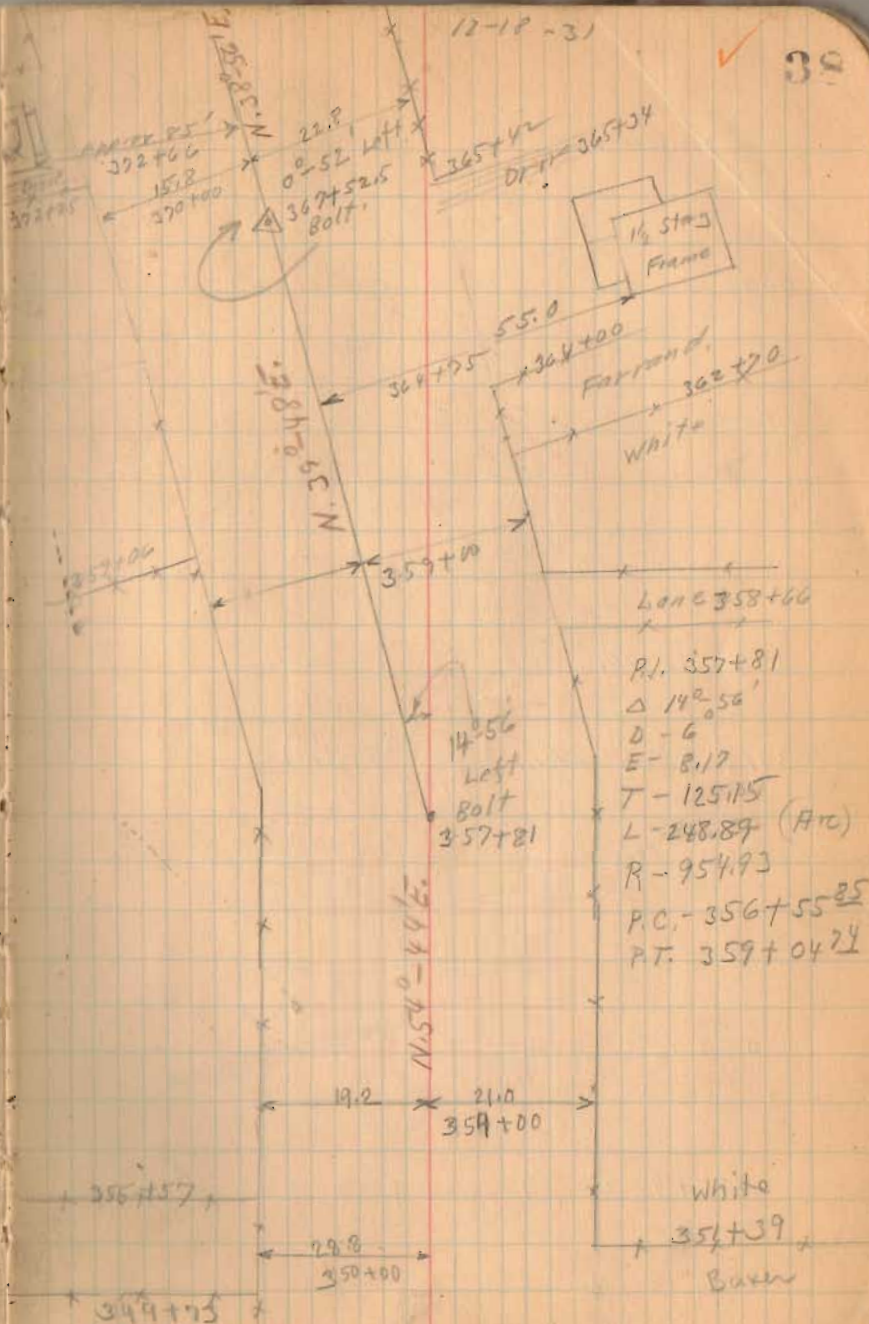
359+00 Man.

356+00 Man.

350+00 Man.

1467
INDEXED ON MAP

38



S.H. 609

407+00 Man.

402+00 Man.

397+00 Man.

391+82.8 Man. ($\frac{1}{2}$ of Angle)
P.L. line.

387+00 Man.

382+00 Man.

INDEXED ON MAP
1467

378+42.3 (90° from backsight)

374+00 Man.

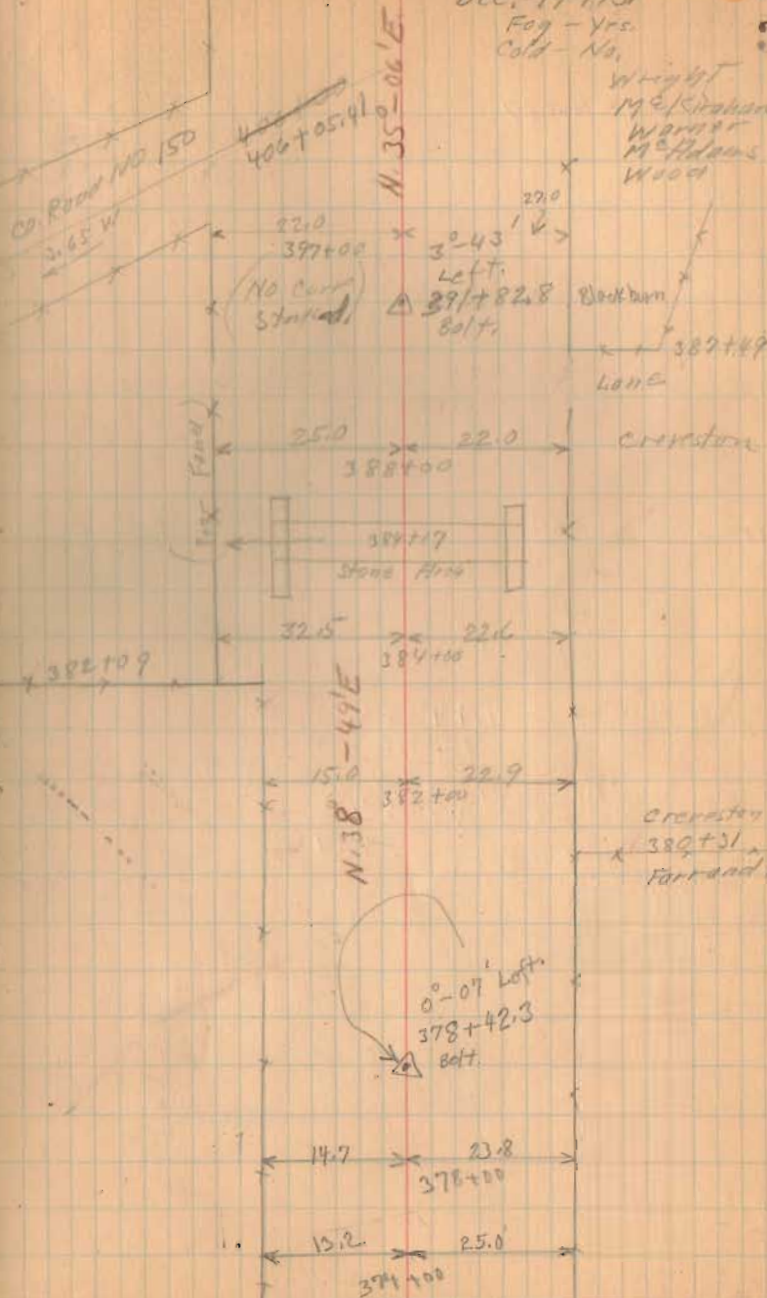
Dec. 19-1931

Fog - Yrs.

Cold - No.

39

Wright
McGowan
Warner
McAdams
Wood



S.H. 607

446+50 Mon.

443+00 Mon.

438+00 Mon.

434+00 Mon.

432+00 Mon.

1467
INDEXED ON MAP

Pt. 444+93
 Δ -43°20'
D-22°
E-19.80
T-103.46
L-196.87 (716)
R-200.44
P.C. 443+89.54
P.T. 445+86.51

Vassar

444+35
Dewitt

442+32

Dec. 21-1931

Cloudy - Some
Cold - No.

41

Wing of
McKinnon
Wanner
McAdams
Wood

Pt. 447
43°20'
444+93
H.H.

Blackburn

(S.R. No. 559)

Co. Road No. 157

442+37

(See Book 590 Page 39)

Collins

N. 14°-42' E.

22.6
438+00

19.5

Pt. 436+02

Δ -8°30'

θ -3°

T-144.92

E-5.27

L-283.33 (A70)

R-1909.86

P.C. 434+60.08

P.T. 437+43.41

Collins

Dewitt
431+58

Collins

20.6

434+00

Pt. 437+02
Bolt

21.4

65.4

435+02

Lockwood
729+22

1/2 City

Frank

433+00

432+50

27.6

432+00

21.2

432+50

N. 23°-12' E.
(111/110)

S.H. 607

499+00 Mon.

472+00 Mon

488+00 Mon

484+00 Mon

480+00 Mon

1467
INDEXED ON MAP

12-21-31

43

P.I. 498+54
 Δ - 29°-52'
 D - 20'
 E - 10.06
 T - 76.58
 L - 149.67 (Arc)
 R - 286.48
 P.C. 497+77
 P.T. 499+27

Dosny

Gibson

498+10

N. 25°-16' E.

N. 55°-12' E.

17.4

16.6

92+00

92.4

Right

486+01.7

Left

P.I. 486+01.7
 Δ - 9°-46'
 D - 4'
 E - 5.22
 T - 122.38
 L - 244.17 (Arc)
 R - 1432.39
 P.C. 484+79
 P.T. 487+23

292.50'
Left
498+54
Bolt

E 498+00
Co. Road No 158
5.5' E

481+24

2 1/2 mi
Fishing

482+56
D.M.C.

180+52
Approx 100

N. 45°-26' E.

Very Poor Flood

17.1

490+00

499+10

S.H. 607

511+00 Man.

508+00 Man.

504+00 Man.

500+00 Man.

1467
INDEXED ON MAP

PI. 512+72.7
Δ - 28° 16'
D - 15'
E - 11.92
T - 96.18
L - 188.44 (Arc.)
R - 381.97
PC 511+97.52
PI. 513+85.96

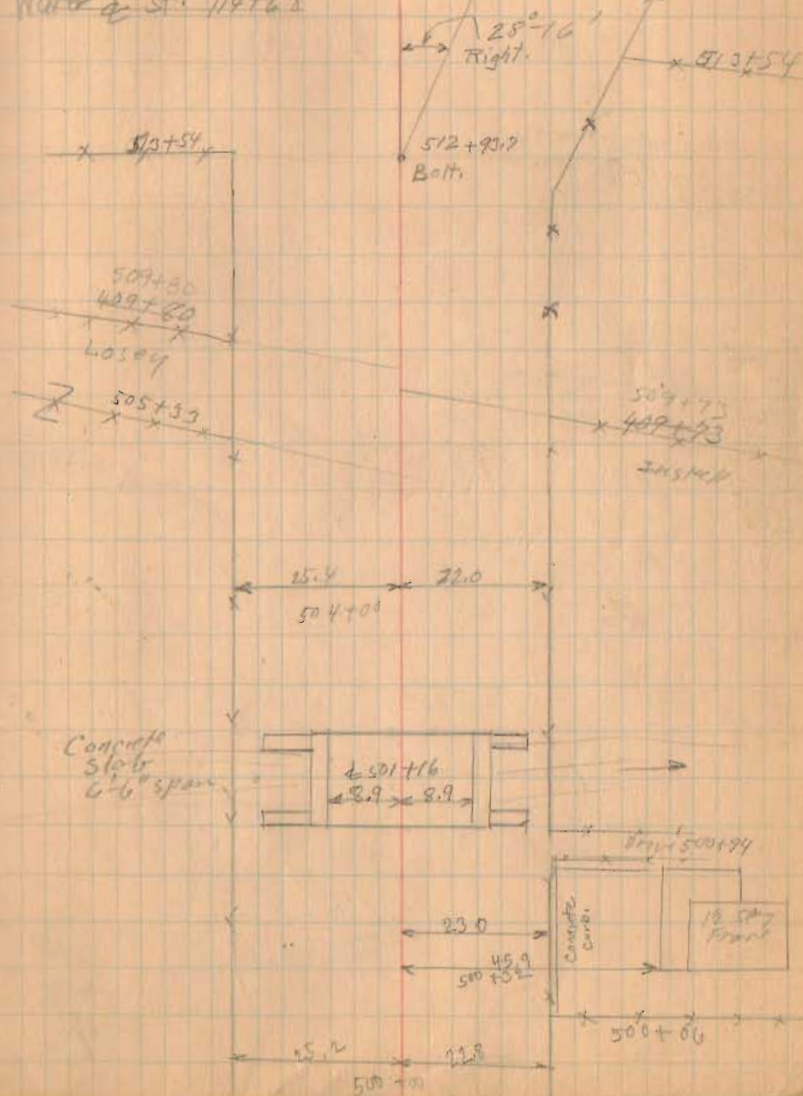
Dec-22-1931

Rain A.M.

Wright
McExpiration
Warren
McPhillips
Wood.

44

Water of St. 114+68



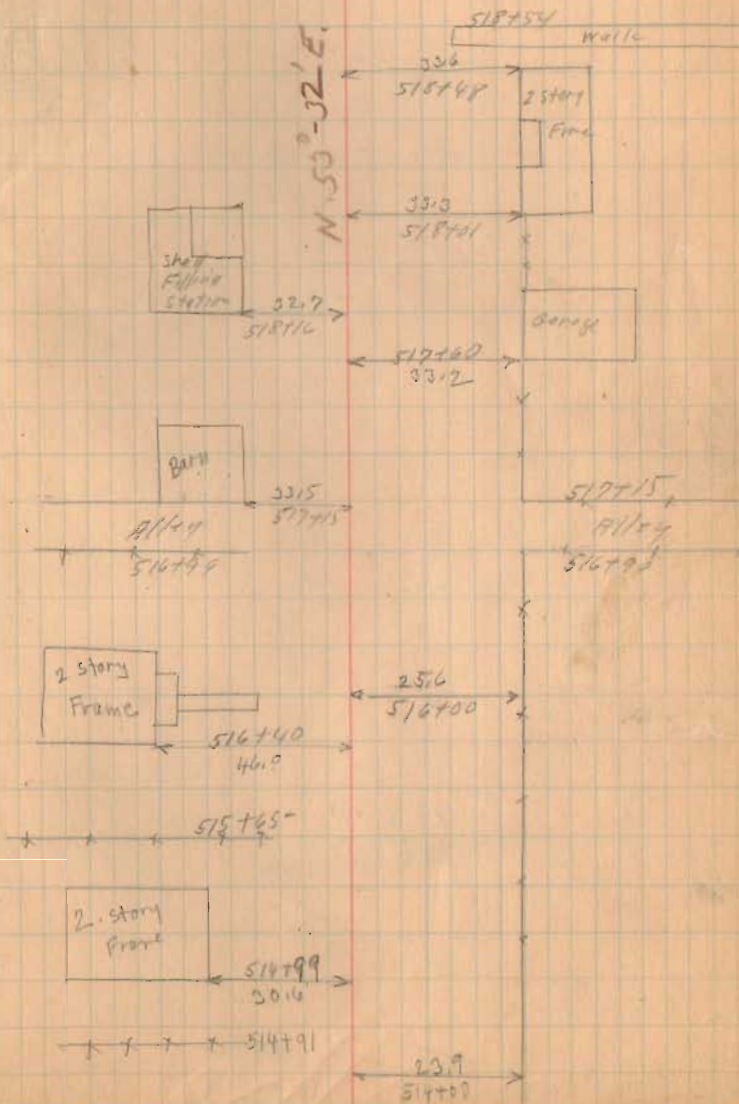
Sitt. 607

12-22-31

45

518782

Ca. Road 153
Columbus St.



S.H. 607

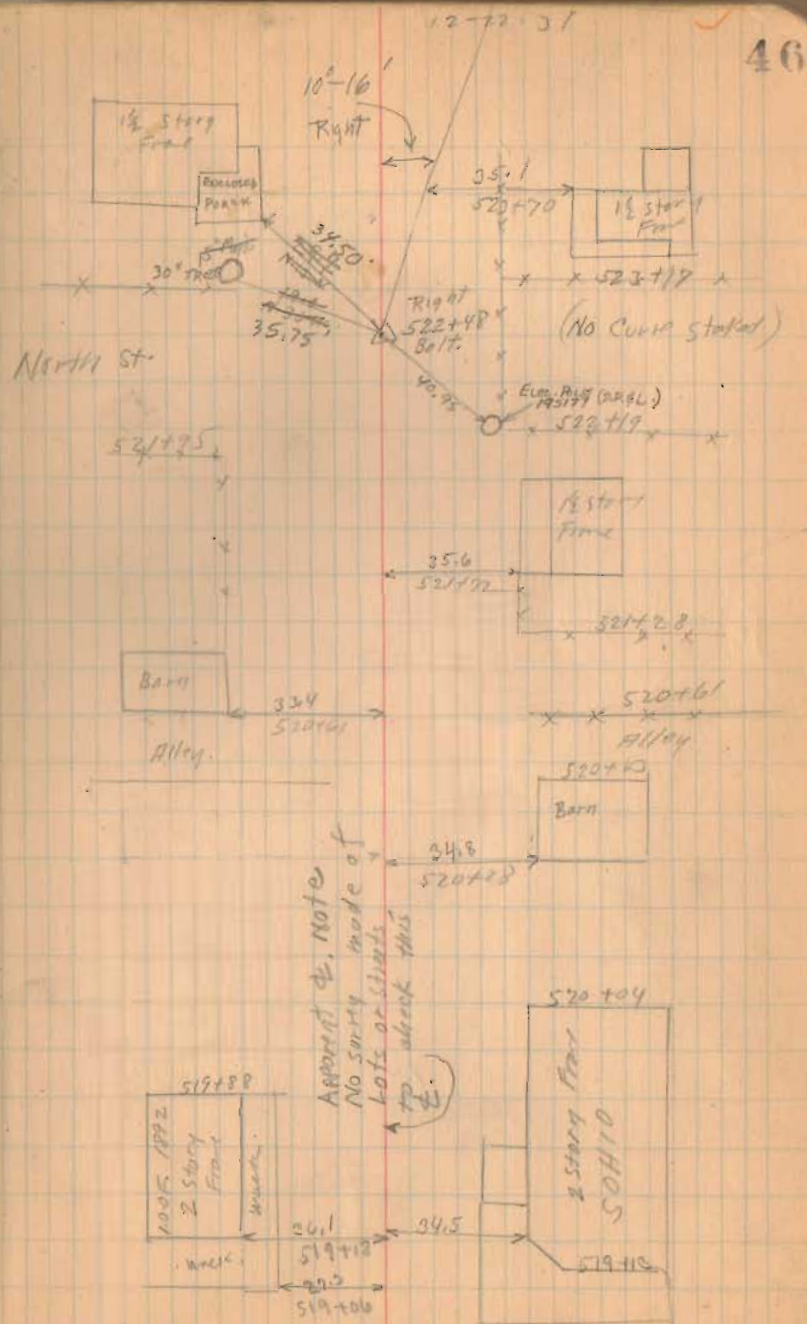
BOLT FD. (12/5/70)

STR. 522+48

NEW WITNESSES

DEG.

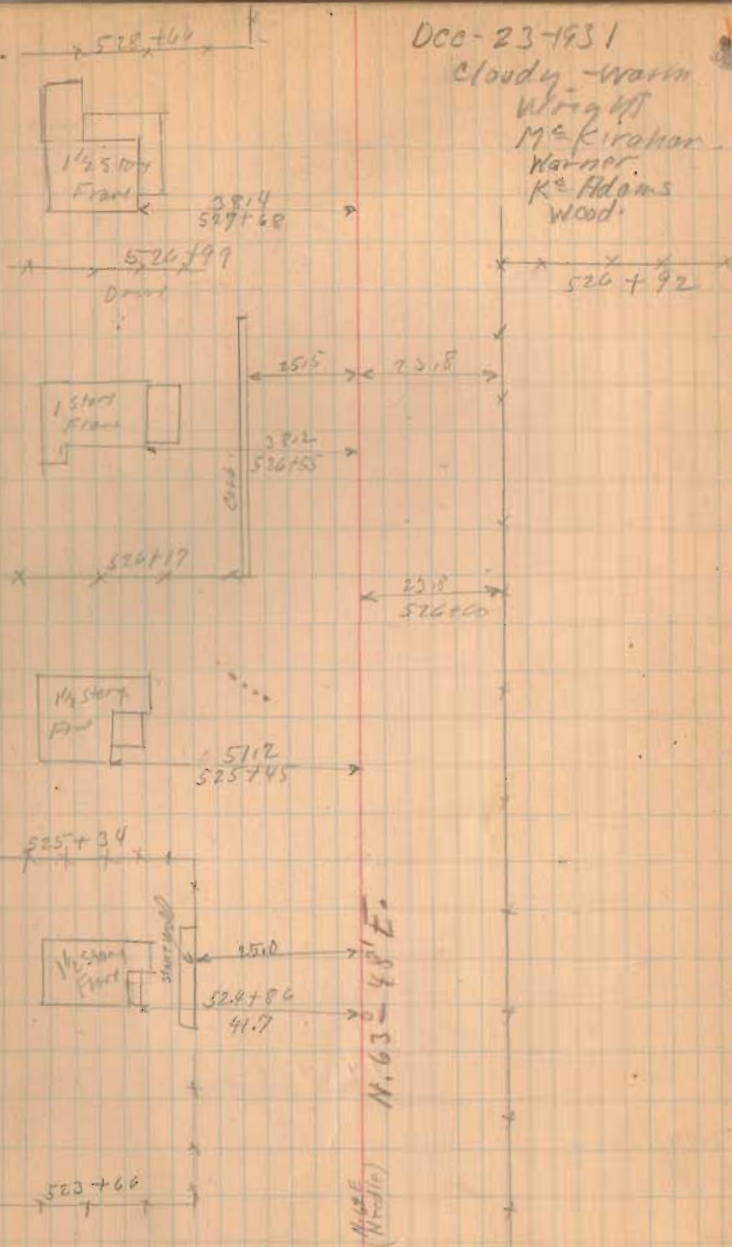
1467
INDEXED ON MAP



S.H. 607,

526+00 Man.

1467
INDEXED ON MAP



SH607

535+00 Mon.

(1467)
INDEXED ON MAP

529+00 Mon.

12-23-31

534114

1/2 story
Finl

46.8
535+66

Richard's

532+59

531132

1/2 story
Finl

47.6
530+93

concrete Wall
530+46

stone Arch

530+18

24.4
530+00

530+00

24.6

22.0

529+00

S.H. 607

572+00

569+00 Man.

561+00 Man.

557+00 Man.

554+00 Man.

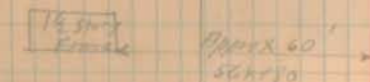
1467
INDEXED ON MAP

12-23-31

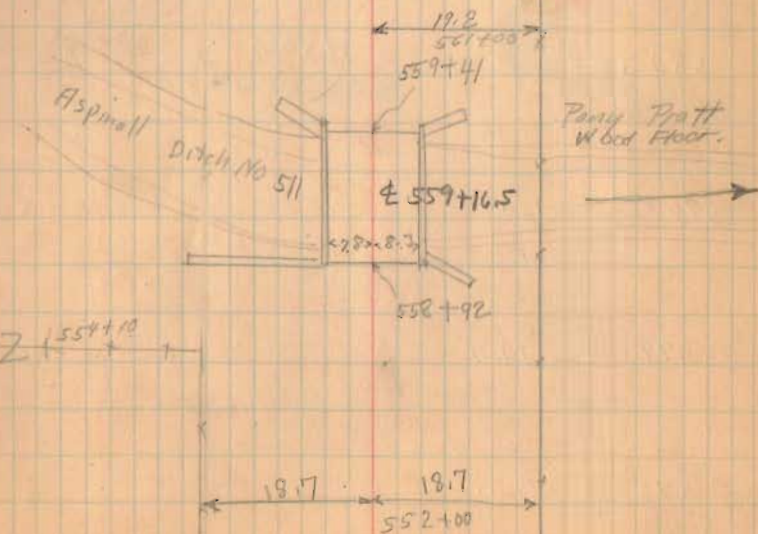
50



PL 570+68.5
 Δ - 33° 0'
 D - 20'
 E - 12.30
 T - 84.86
 (Arc) L - 165.00
 R - 286.48
 PC - 569+83.49
 PT - 571+48.69



Patrick
 563+10
 Shirk



S.H. 607

Total Length 58,062.5 Feet
" " 10.9968 Miles
17½ feet less than 11 Miles.

580+00

(1467)
INDEXED ON MAP

576+00 Mon.

574+00 Mon.

12-20-31

51

