

Road 29
Monroe Twp.

(Continued from Book 552 Page 73)

Stakes Flood 20' from E for a 40' Road.

1369
INDEXED ON MAP

March 28-1932

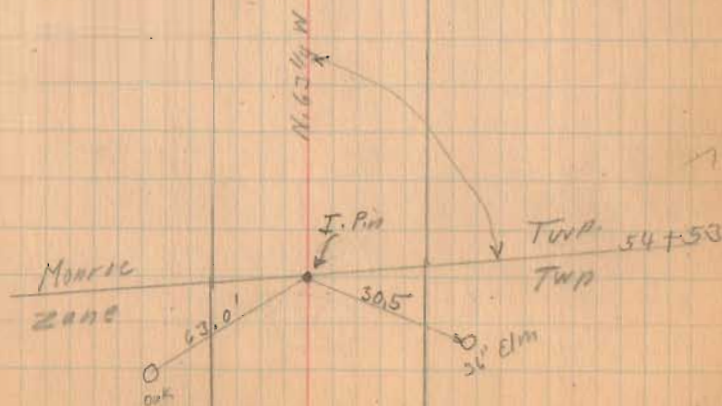
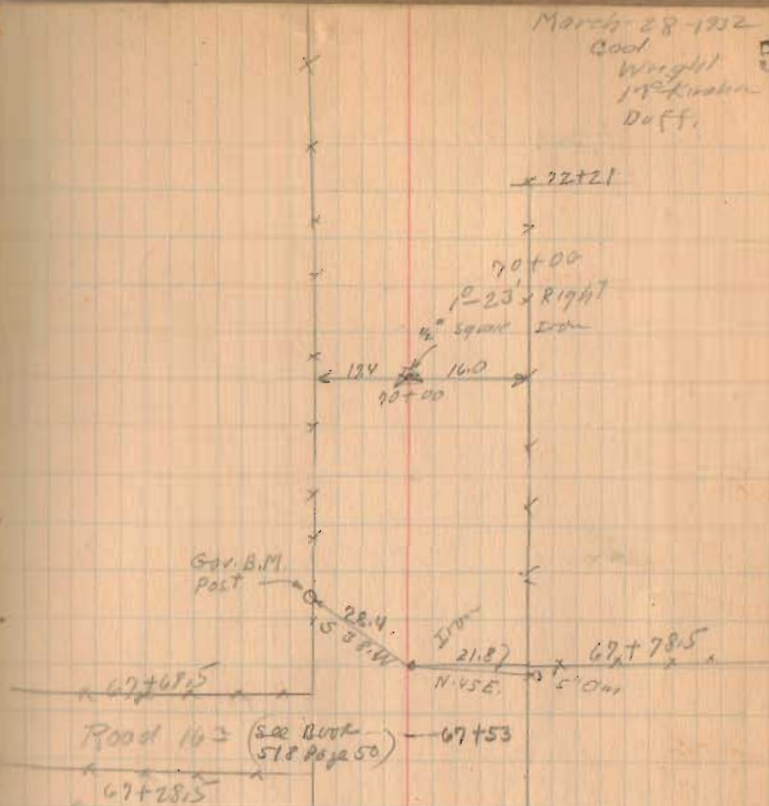
Cool

Wright

J. P. Kuster

Duff.

50



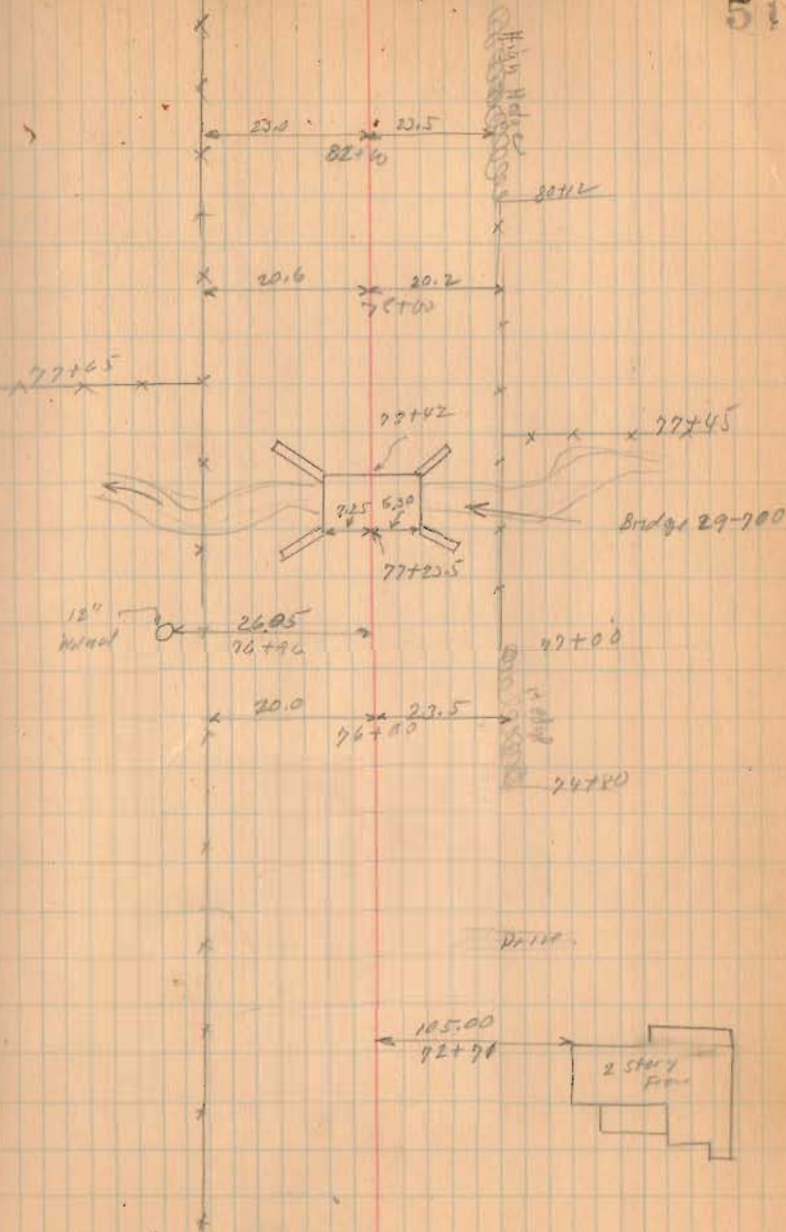
Road No. 29

1369

INDEXED ON MAP

3-28-32

51



Road No. 29

3-28-32

52

91+37.6

18.8 18.0
96+0.0

91+58

(No Fence)

59.2 Cedar Trees
90+57

Point 125'
90+02.5

1.5 Story Frame

90+10

89+95

89+12

18.6 24.0
88+20

85+78

10" Walnut 23.6
85+69

Iron
87+00
0° 47' left

1369

INDEXED ON MAP

