

McKunahan
Cox
& Wright

Dec 25-31
clear

Road # 29
zone Trip.

(1294)
INDEXED ON MAP

31

IRON PIN

stone

23.6

TURN $46^{\circ} 11'$

Norse

Hollycross

802'

Walnut Tree

31'

IRON PIN

Road 151

101'

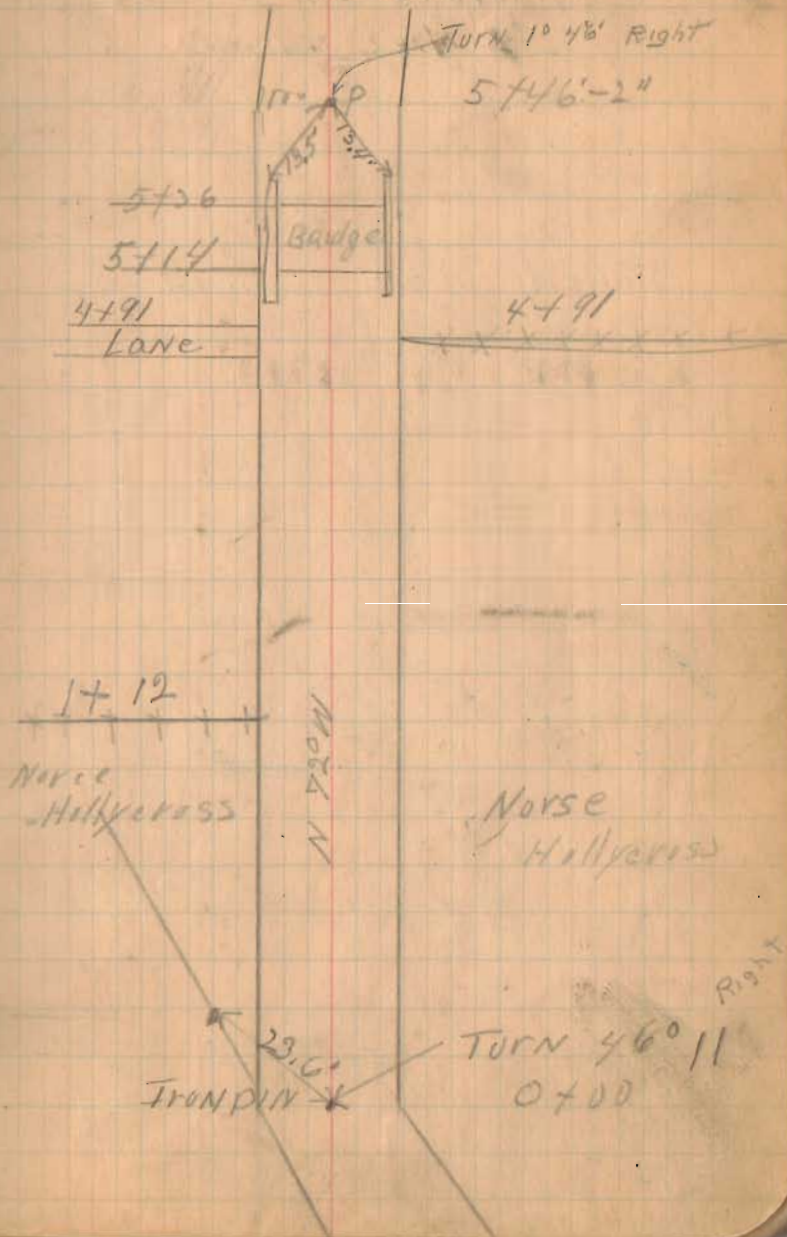
Bridge East side

Road # 29
Lane Twp

Staked 40' wide

(1294)
INDEXED ON MAP

Dec - 29 - 31
McKirahan
Core
E Wright 32



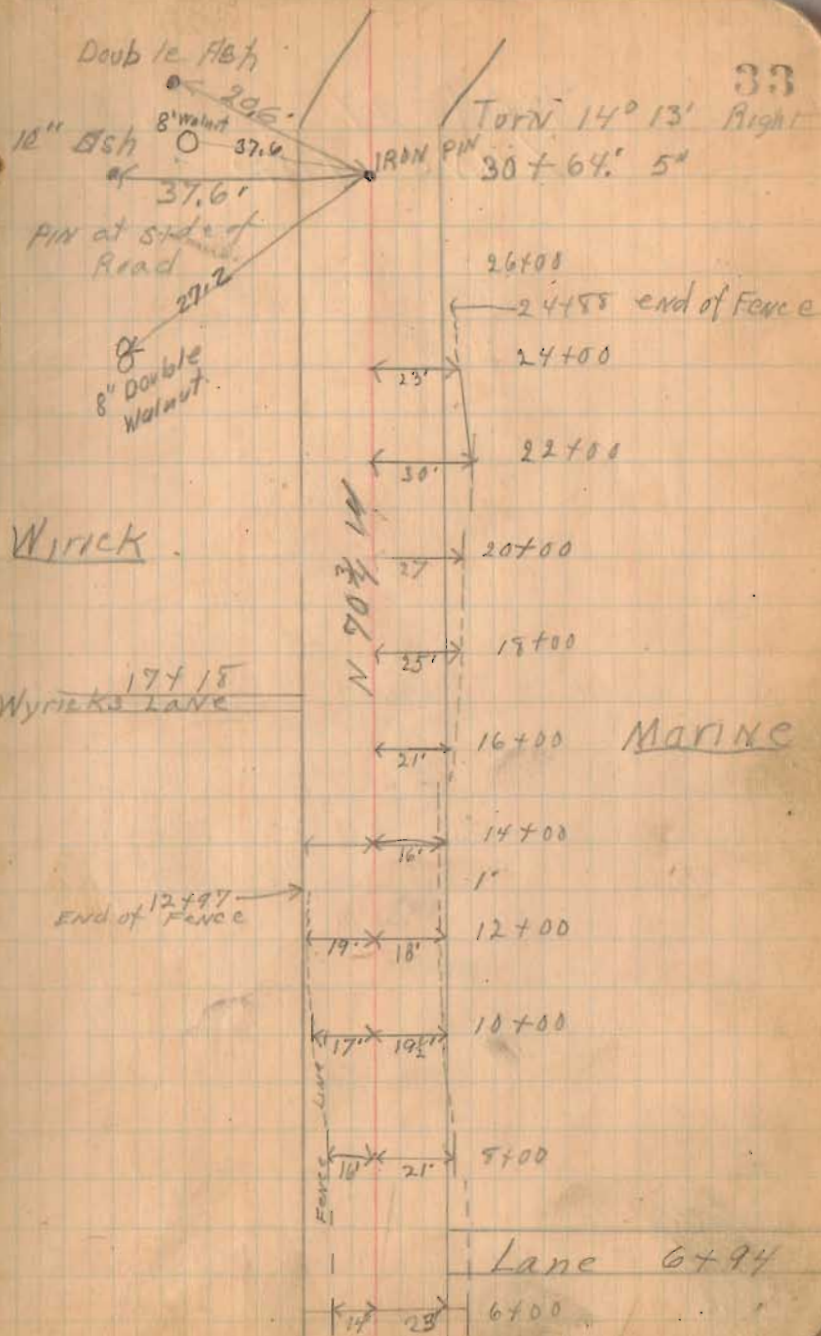
Road # 29

Dec 29 - 31
Cloudy
McKirahan
Cor Wright
E Wright

Staked 40' wide.

1294
INDEXED ON MAP

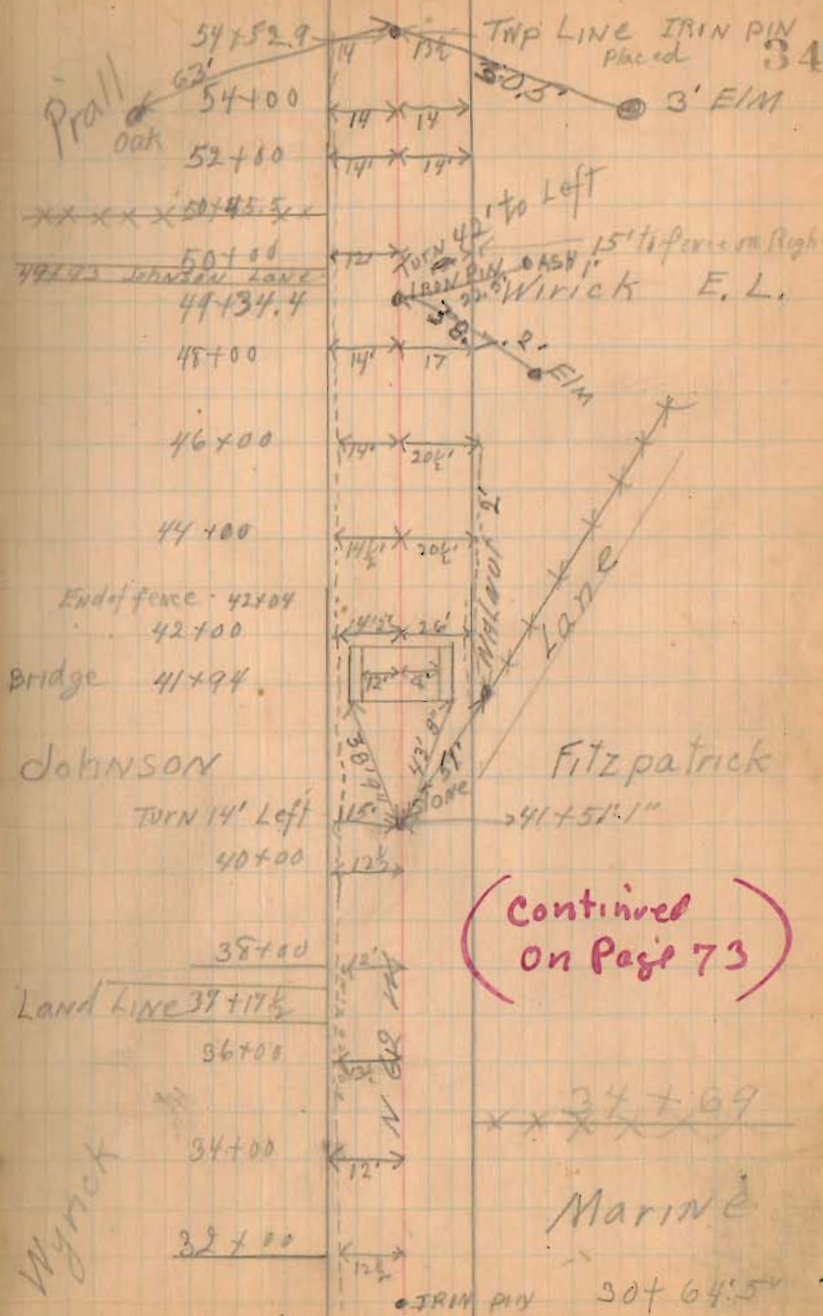
33



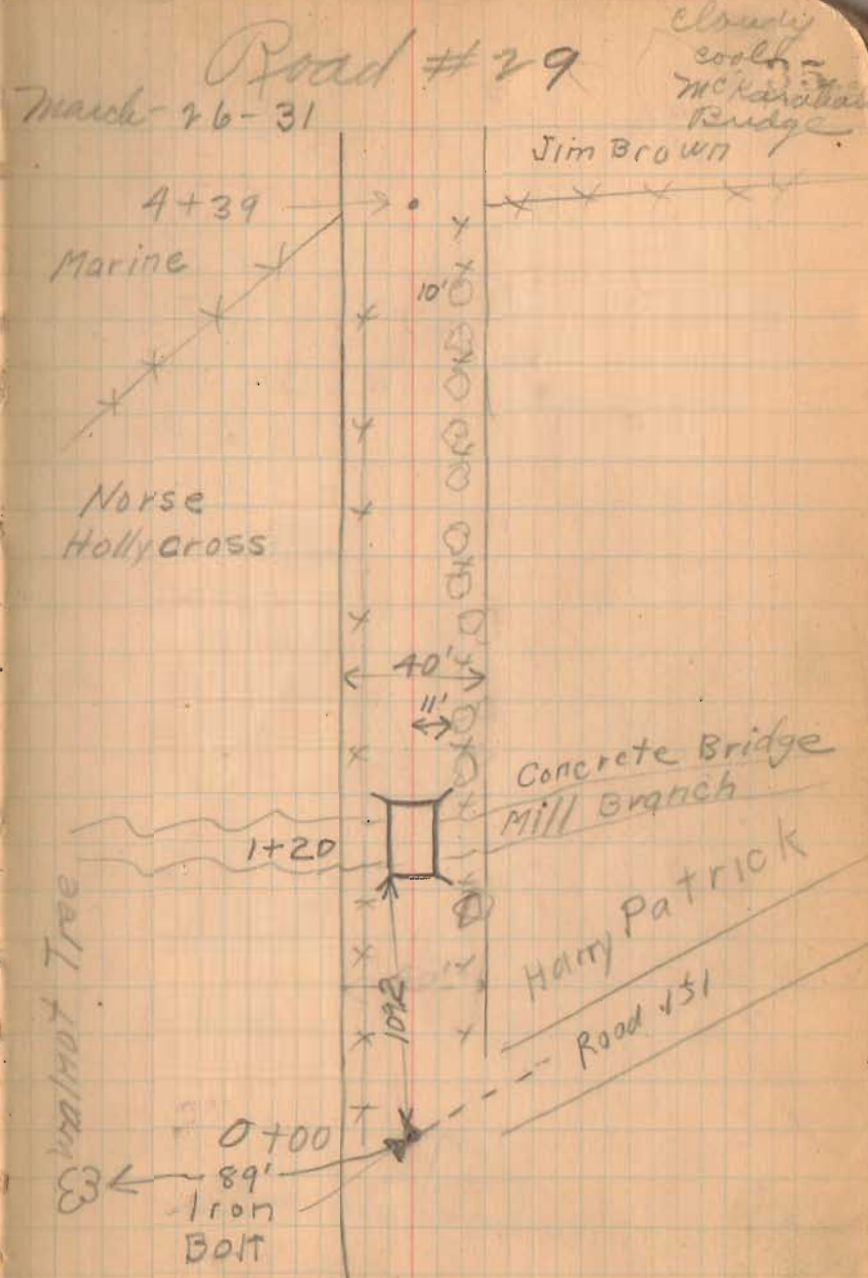
Dec 29 - 31

Road # 29
LANE TWP

1294
INDEXED ON MAP



(1294)
INDEXED ON MAP



3-26-31

	<	x	
		y	
		y	
13+82		y	
Res	← 75' →		no fence
		y	
12+65		y	
		y	
		y	
		x	
	← 30' →		
Lern. FOUTZ		y	
		y	
9+29		y	
Marine		y	Jim Brown
		y	
		y	
		y	
		y	

1294
INDEXED ON MAP

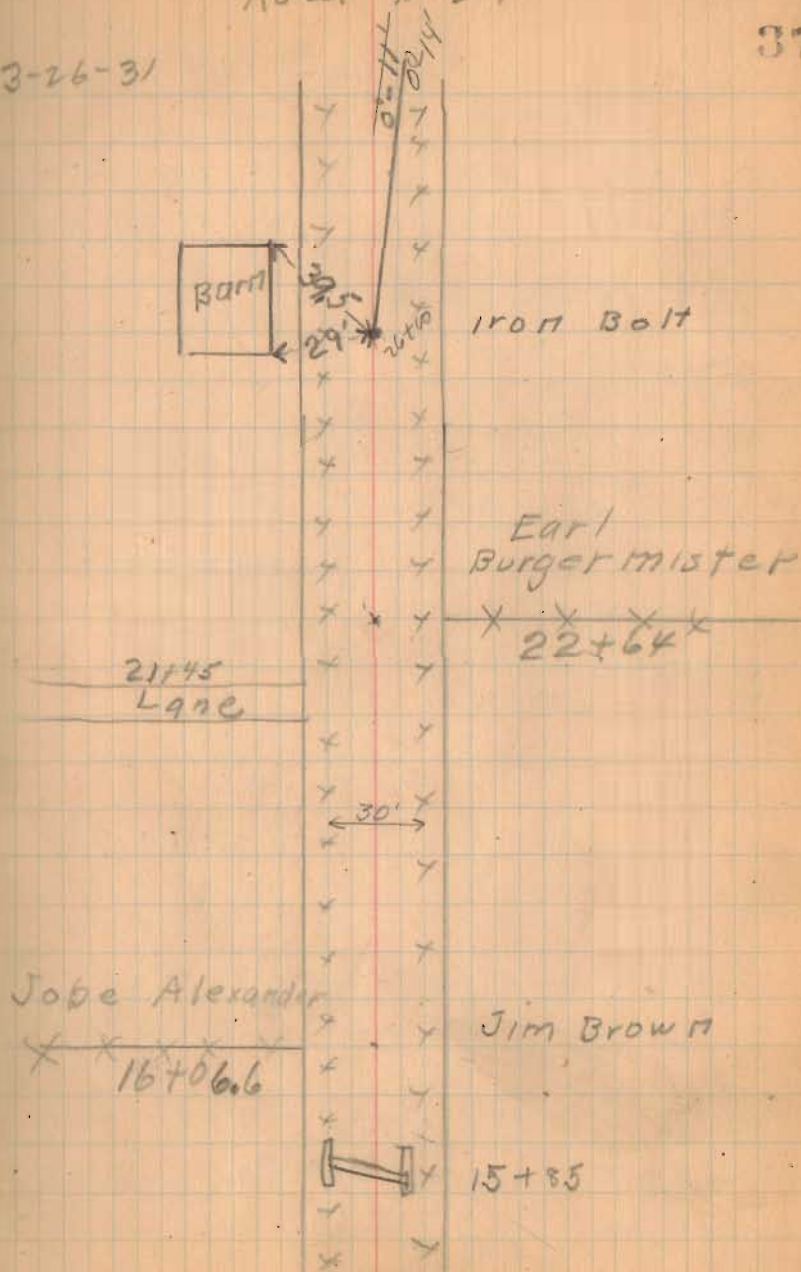
26+00 Angle 0°-11' Right

1294
INDEXED ON MAP

Road # 29

37

3-26-31



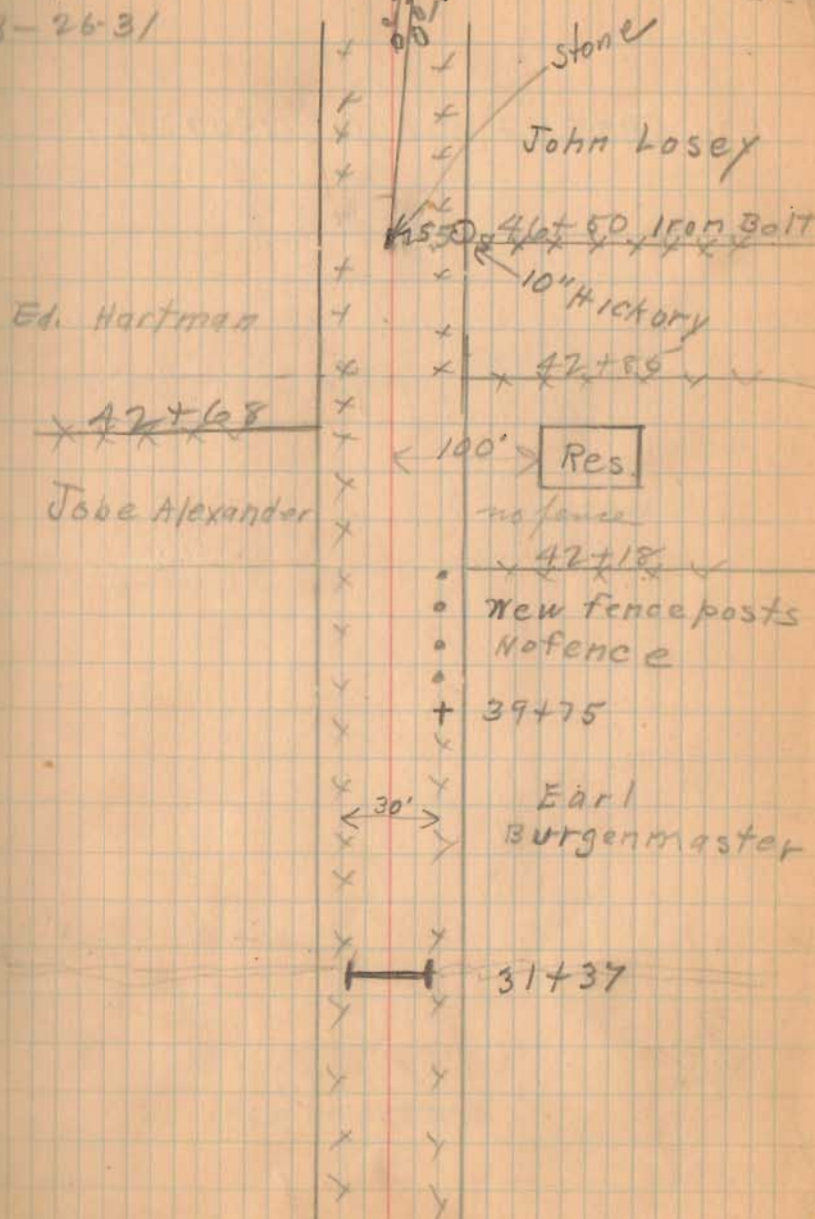
46+50 Angle 0°-35' Right

(294)
INDEXED ON MAP

Road #29

38

3-26-31



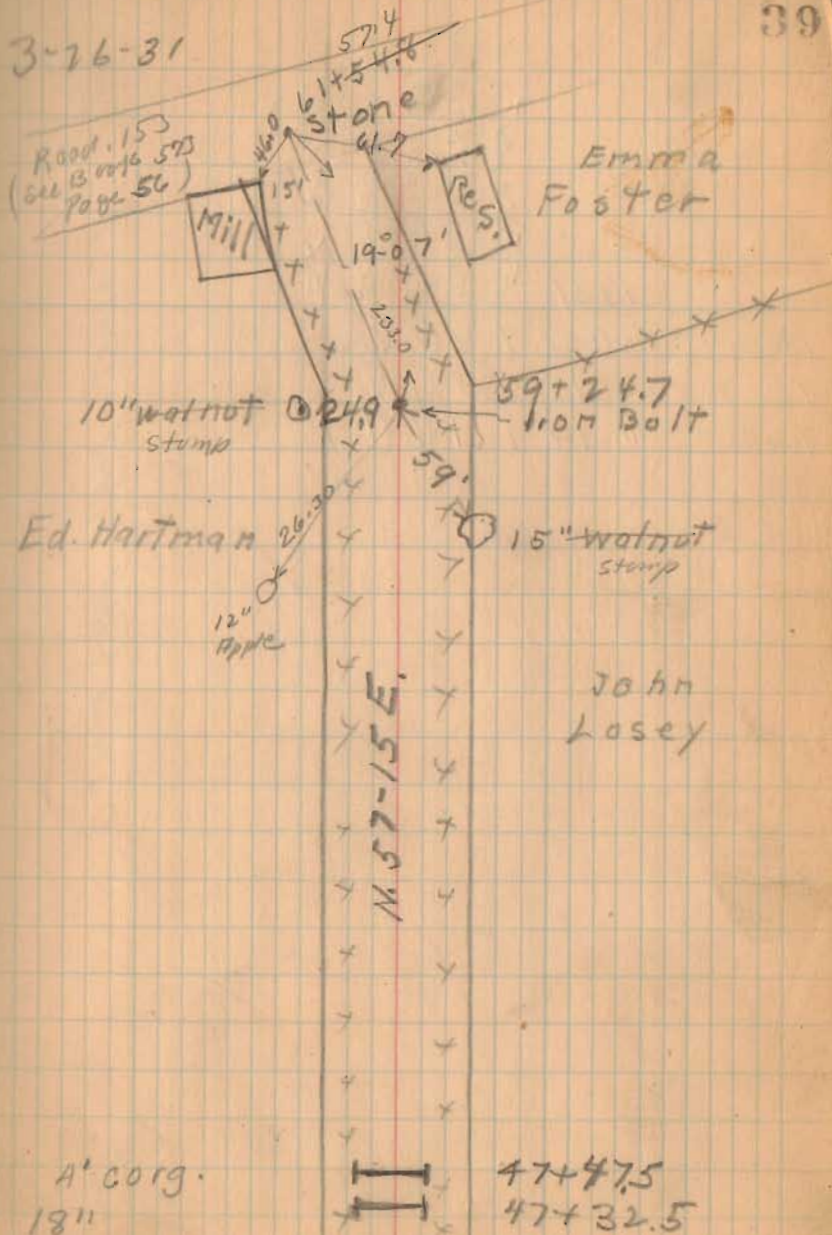
Sta 59+24.7 Angle $19^{\circ}07'$ Left

1294
INDEXED ON MAP

Road # 29

39

3-26-31



Dec 29-31

Road # 29
MONROE TWP

(Continued in Book 560 Page ~~60~~⁵⁰)

Staked for 40' Road

1294
INDEXED ON MAP

Cloudy and
Foggy

McKirahan
Core
E. Wright

73



Stanley

57+38

N 63 1/2 W

56+56 End of fence

56+00

PRAH

Iron PIN

MONROE TWP
PR
LANE TWP
54+52.9

65°
DARK

345

ELM