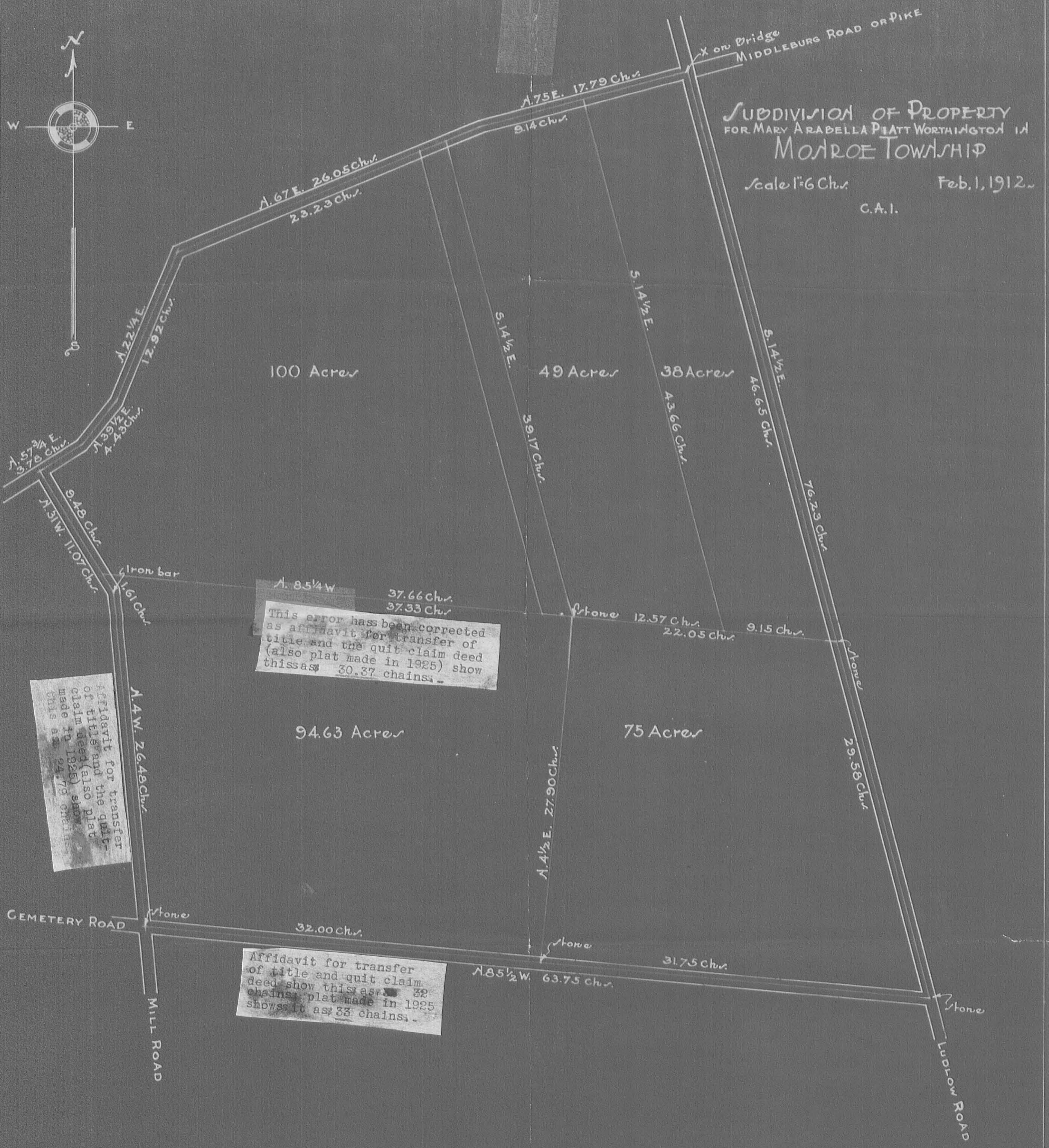


SUBDIVISION OF PROPERTY
FOR MARY ARABELLA PLATT WORTHINGTON IN
MONROE TOWNSHIP

Scale 1" = 6 Chrs. Feb. 1, 1912.
C.A.I.



A. 85 1/4 W. 37.66 Chrs.
37.33 Chrs.
This error has been corrected
as affidavit for transfer of
title and the quit claim deed
(also plat made in 1925) show
this as 30.37 chains.

Affidavit for transfer
of title and the quit-
claim deed (also plat
made in 1925) show
this as 24.79 chains.

Affidavit for transfer
of title and quit claim
deed show this as 32
chains; plat made in 1925
shows it as 33 chains.

Amole Description Remainder

Being situated in Section 15, Town 5, Range 13, in Monroe Township, Logan County Ohio.

Beginning at a stone in the center of the vacated Township Road 175 that bears N85°-15'W 2095.4 feet from a stone where the vacated Township Road intersects the Ludlow Line. Said beginning stone is also the Southwest corners of a 75.00 acre tract.

Thence with the center of said vacated Township Road 175 N85°-20'W 1399.2 feet to a iron at the South East corner of a 30.00 acre tract.

Thence with the East line of said 30.00 acre tract N3°-46'W 1739.5 feet to a iron in the South line of a 80.00 acre tract. (This course is a calculated one)

Thence N87°-00'6"E 271.2 feet to a corner post.

Thence S88°-51'6"E 959.0 feet to a iron at the South East corner of said 80.00 acre tract.

Thence S88°-48'6"E 429.5 feet to a concrete corner post at the Northwest corner of a said 75 acre tract.

Thence with the West line of said 75.00 acres tract S4°-42'W 1841.4 feet to the place of beginning.

Containing 62.78 acres more or less. Being the remaining portion of a 177.48⁵ acre tract.

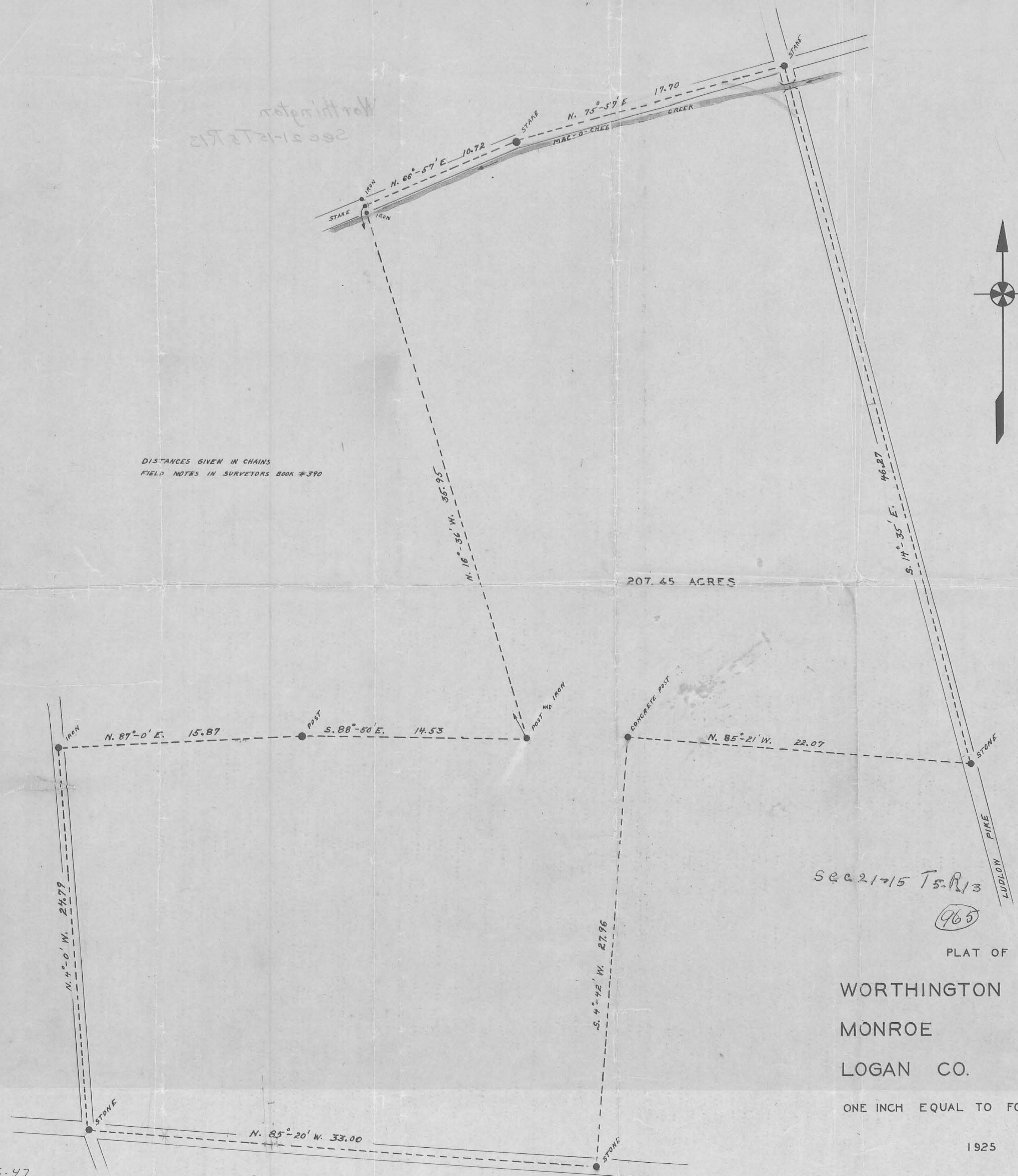
Owen K. Shirk
Surveyor 4271

INDEXED ON MAP
945 2D

Northampton
Sec 21-15 T13

DISTANCES GIVEN IN CHAINS
FIELD NOTES IN SURVEYORS BOOK #390

207.45 ACRES



SEC 21-15 T13

(965)

PLAT OF
WORTHINGTON SURVEY
MONROE TOWNSHIP
LOGAN CO. OHIO

ONE INCH EQUAL TO FOUR CHAINS

1925