

Compared

Surveyed for
Mrs. Adelaide Hadley

Pt. of survey 4957

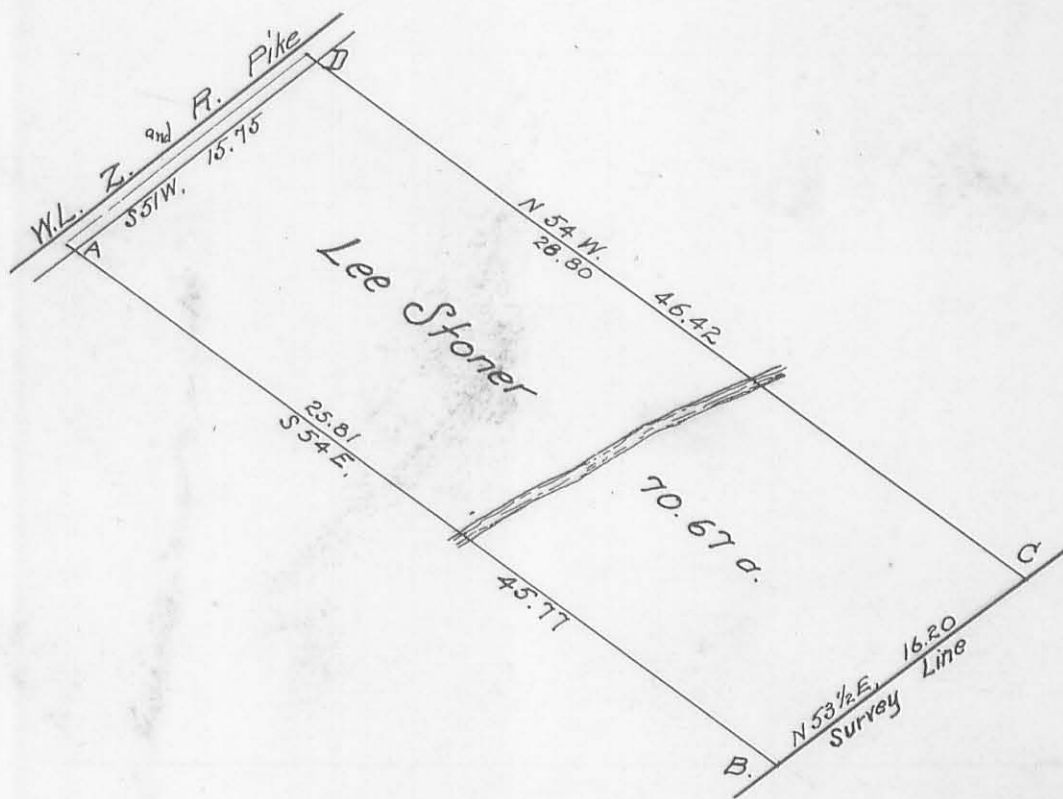
Monroe and Jefferson Townships

July 12, 1907

(154)

INDEXED ON MAP

Oliver C. Fickey | ch. crs.
Wilson Drumm



— Description of Corners —

- A. Quarry stone & 3 bricks in center of pike
Wit:— 36" Walnut (live tree) S54E, 45 1/2 links
28" Walnut, S86 1/2 E, 119 links.
- B. Stone in Survey Line
- C. Post. Wit:—
24" Beech, N57W, 40 links
15" Ash, N36E, 83 links
- D. Sandstone & 3 bricks in center of pike

. Field notes Book 55 pages 18-19-20