

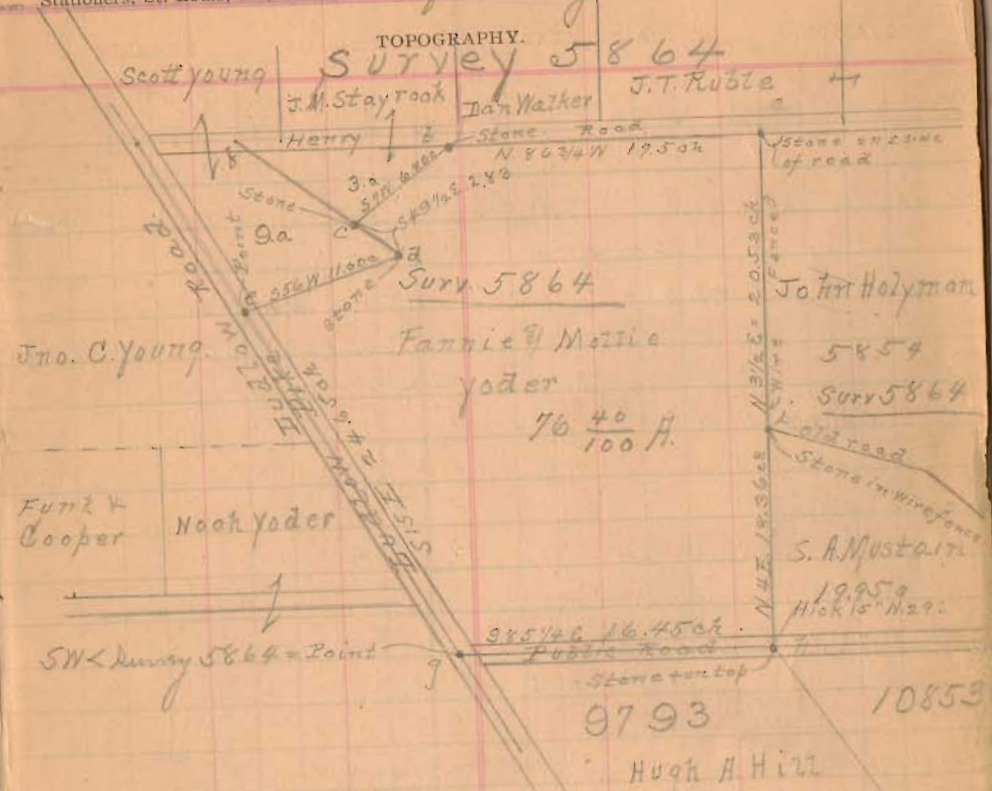
Yoder Survey March 29th 1916
 Stephen Zook } checker
 Al Yoder }
 Charma Hooley } marker
 Mena Yoder }

STATION. ALIGNMENT. DEFLECTION. REMARKS

- (1) Start at 15' N = Right of NE \angle Yoder Gills = a
 Stone near S. side of old Henry road
 Thence with N line Yoder and S side Henry road
~~17.50 ch~~ Dep 5.9. correct course = N 66 3/4 W = 17.50
 at 17.50 ch fall 6'. N of stone at NW \angle
 Yoder \angle NE \angle M. Stayrook
 Wit stone angle 24° S 46 E = 14'. 22° R.O. 53 E = 5.4'
 W Dak 5° S 38 1/2 W 13.5
- (2) Start 15' W = Ref stone 17.50 of (1)
 Thence with W line Yoder \angle E line Stayrook
 S 7 W = 6.80 ch. (Note error in chaining 5.83 should be 6.80 = 7)
 At 6.80 ch fall 15' W = Ref stone = c = 57 W
- (3) Start at 4 left = N of stone = 5.83 of 2
 Thence on line Yoder \angle Scott Young = S 49 1/2 E
 at 2.83 ch fall 1.4' set boulder 1.7' x 1.5' x .8' + on top.
 Line to d is in line with wire fence c to f.
 OK course = S 49 1/2 E = 2.83 ch
- (4) Start at 10 = S of \angle c = 2.83 of (3)
 Thence on line Scott \angle Yoder = S 56 W = 11.00
 at 11.00 ch fall 10 = S of \angle on London Pike. cut pike
 Wit \angle c cut arch over N 15 W 2.66
- (5) Start cut London pike = e = 11.00 (4)
 S 15 E. With cut pike \angle on hollow line
 24.65 ch - cut out road = 59 \angle Yoder = g.

INDEXED ON MAP **44**

Plat of Yoder Survey March 29th 1916
 Part of Survey No. 5864.
 Stationers, St. Louis, Mo.



- (6) With cut public road = S line Yoder
 S 85 1/2 E. at 16.45 ch fall 5.8' N of stone + on top at
 S.S. of cut travel of public road. Departure N 5.8 in 16.45 ch
 Correct course S 85 1/4 E = 16.45 ch
- (7) Start at 7 left = W of stone \angle h. Thence on line Yoder \angle Mustain
 N 44 1/2 E. Dep = E 17.2 in 18.36 ch = N 4 E = 18.36 ch
 at 18.36 ch fall 10.2 right = E of stone \angle Mustain \angle Holyman
 correct course N 4 E = 18.36 ch
- (8) Start 15' left = W of stone \angle Mustain \angle Holyman = e
 Thence with wire fence \angle line Yoder \angle Holyman
 N 3 1/2 E. Correct course N 3 1/2 E = 20.53 ch
 at 20.53 ch fall 15' W = left of stone = a \angle Yoder \angle Holyman