

W. Co. Smith. et al. Dundy Oct

R. P. STUDLEY & Co., Manufacturing

STATION. ALIGNMENT. DEFLECTION. REMARKS.

(1) Start at 9<sup>th</sup> post 18 in wire fence in N line. Robt Matthews =  
thence S 75° W. corrected course S 75° W

at 1219' strike  $\perp$  in New line wood post in wire fence N 4° E.  
set left S = 6'. continue line S 75° W

2615  
2614 = fall 4' left S. of Red E. N. side S. N. E. H. Williams  
15' W. R. 313 1/2 E

(2) Start at 2615 of (1) thence S 75° E. set left E = 10'  
1316

at 1319 post in wire fence = g in New line. S E S. H. Williams  
1316  $\times$  g = R. Great 21 = dip = 26 left = S 13 3/4° E

(3) Start 10' R-W of g = 1316 of (2)  
thence with New line S 75° W. fall R 10 from  $\perp$  d. N.W. H. Outland

at 1301 post wood in wire fence N 9° E. H. Outland  
1195

(4) Start 40' R-W of 4cd = 1195 of (3)  
thence S 15 1/2° E

at 1243 fall 40' R of wood post in wire fence = S.W. H. Outland = a  
1240

(5) Start 25' left N. of c = 1240 of (4)  
thence N 74° E (N 74 1/2° E = 1700' 9' S 10 1/2° E = 241)

at 1700 fence old R = 113

2641  
2640 fall 25' left N. of old wood fence post = S E S E  
H. Outland. Note this  $\perp$  113 to find R

(6) Start at old wood post in wire fence = 2641 of (5) = f  
thence N 16 1/2° W with wire fence New line N. Williams

at 1204 = N. end wire fence in New line. 3221, 3222, 3223, 3224, 3225  
and N. E. H. Outland & N.W. Joe Stanley = a

(7) Start 30' R = S of a = 1202 of (6)  
thence N 74 1/2° E with S line New 3221. South corner N 74 1/2° E

at 1233 fall 30' R of wood fence post in wire fence = b

Note Max. from c = 1219 of (1) to a = 1302 of (6) = 1325'

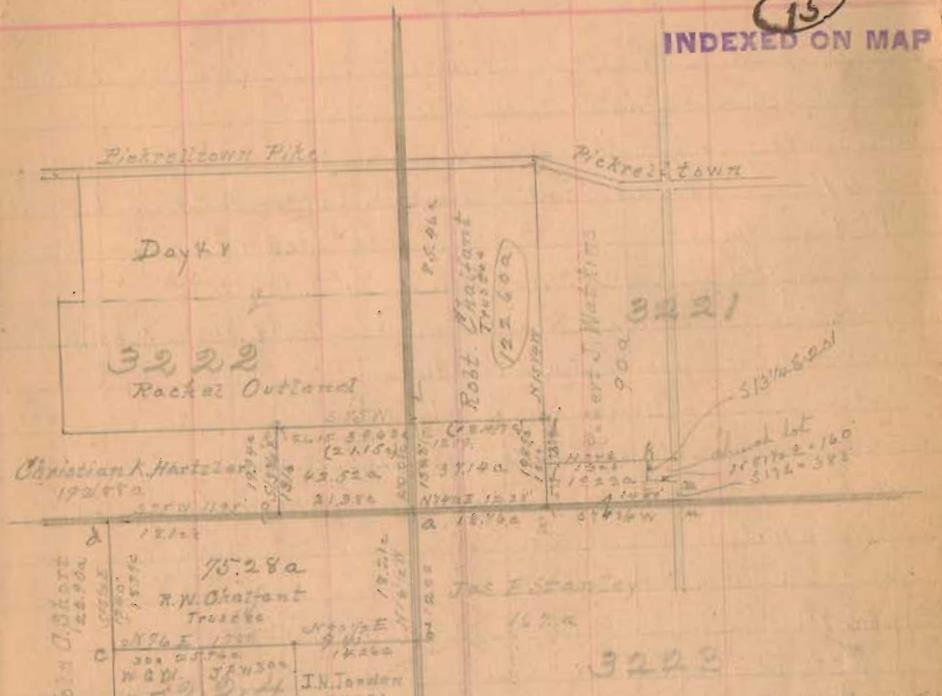
(8) Start wood post in wire fence = 1233 of (7) = h  
thence N 15 1/2° W with old fence line N. line Robt Matthews

at 1310 wood post in wire fence = g = 2615 of (1)

(Monroe Twp)

TOPOGRAPHY.

INDEXED ON MAP <sup>15</sup>



(9) Start at g = 577 of (8) thence N 74° E with line Robt Matthews &  
Joe Stanley. at 1324 N. line of Outland (Quaker) church

(10) at 1324 of (9) thence S 13 3/4° E 201 to S.W.  $\perp$  church line

(11) Start at 201 of (10) N 81 1/2° E with apparent line of church line  
at 160' end Pickreestown Pike 62'  $\perp$  church line

(12) Start at 160 of (11) and pick thence with end pike  
S 17° E. at 383 to post in S line New 3221 = ai

(13) Max. on New line from 383 of (12)  
at 1472 L. = 1233 of (7) = S 74 3/4° W = 1489

UH Max. from h to j = 577 = N 15 1/2° W = 577

\* W & Williams 3ca  
@ John A. Williams 6ca