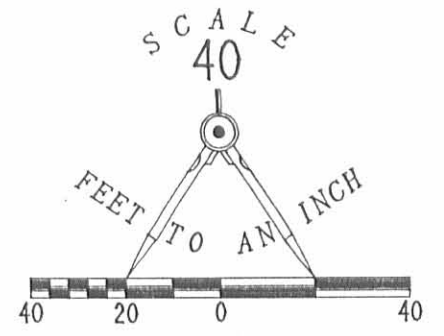
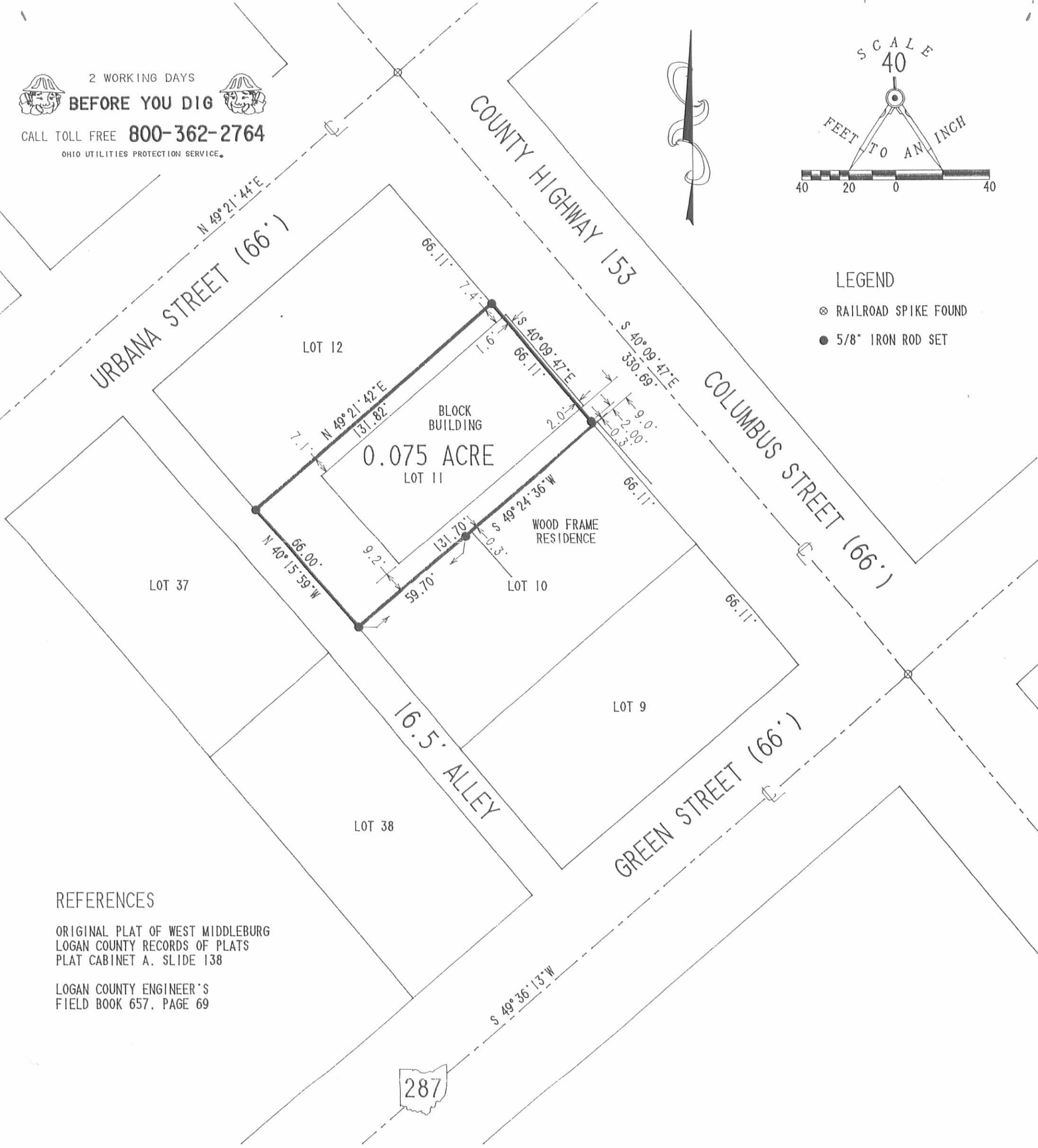


2 WORKING DAYS
BEFORE YOU DIG
 CALL TOLL FREE **800-362-2764**
 OHIO UTILITIES PROTECTION SERVICE.



LEGEND

- ⊗ RAILROAD SPIKE FOUND
- 5/8" IRON ROD SET



REFERENCES

ORIGINAL PLAT OF WEST MIDDLEBURG
 LOGAN COUNTY RECORDS OF PLATS
 PLAT CABINET A. SLIDE 138

LOGAN COUNTY ENGINEER'S
 FIELD BOOK 657, PAGE 69

RETRACEMENT SURVEY OF LOT 11
 ORIGINAL PLAT OF WEST MIDDLEBURG
 VILLAGE OF MIDDLEBURG
 VIRGINIA MILITARY SURVEY 3155
 ZANE TOWNSHIP
 LOGAN COUNTY
 OHIO

SURVEYED BY

JEFFREY L. LEE
 PROFESSIONAL SURVEYOR 6359
 AUGUST 3, 1994



ORIGINAL STAMP IN GREEN

LEE SURVEYING & MAPPING CO.
 143 East Columbus Avenue
 BELLEFONTAINE, OHIO 43311
 (513) 593-7335

INDEXED ON MAP
 89.37 1P