

# Lee Surveying and Mapping Co., Inc.

2-17-17



Land Surveys • Topography • Subdivisions • Construction Layout

117 N. Madriver St.  
Bellefontaine OH 43311



Phone: (937) 593-7335  
Fax: (937) 593-7444  
surveys@lsminc.us

## DAVIDSON 3.427 ACRES

Lying in Sections 34 and 35, Town 3, Range 13, Miami Township, Logan County, Ohio.

Being out of the Lee W. Davidson and Gina A. Davidson and Lyn A. Davidson, 57-1/2 acre tract as dedeed and described in Official Record 1236, Page 626, Tract One of the Logan County Records of Deeds and being more particularly described as follows:

Beginning on a 5/8 inch iron rod found in a monument box on the southeast corner of Section 35 and the northeast corner of Section 34 at an angle point on the center-line of Ohio Route 706.

THENCE, with the east line of Section 34 and the center-line of Ohio Route 706 (60 feet wide), S 00°-40'-30"E, a distance of 120.46 feet to a MAG nail set.

THENCE, S 89°-19'-30"W, passing into Section 35, a distance of 268.50 feet to a 5/8 inch iron rod set, passing a 5/8 inch iron rod set at 30.00 feet.

THENCE, N 00°-57'-34"W, a distance of 554.36 feet to a 5/8 inch iron rod set.

THENCE, N 89°-19'-30"E, a distance of 269.66 feet to a 5/8 inch iron rod set on the east line of Section 35.

THENCE, with the east line of Section 35 and the west line of the Tim W. Davidson, Trustee 79 acre tract (O.R. 495, Pg. 654), S 00°-53'-08"E, a distance of 433.89 feet to the point of beginning, passing a 5/8 inch iron rod set at 403.89 feet.

Containing 3.427 acres, of which 0.103 acre is within the highway right-of-way. There is 0.731 acre within Section 34 and 2.696 acres within Section 35.

Property is subject to any and all previous easements and rights-of-way of record.

The basis for bearings is the east line of Section 34, being N 00°-40'-30"W, and all other bearings are from angles and distances measured in a field survey by Lee Surveying and Mapping Co., Inc. on December 14, 2016, revised February 11, 2017.

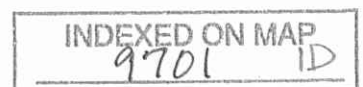


Description prepared by:

*Jeffrey I. Lee*  
Jeffrey I. Lee  
Professional Surveyor 6359  
February 13, 2017

62030217

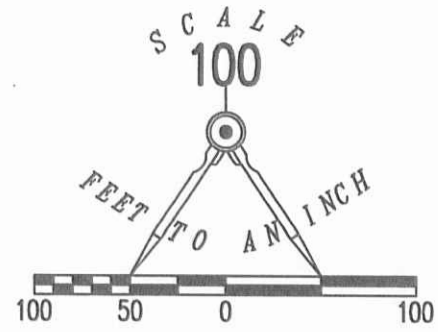
ORIGINAL STAMP IN GREEN



2-17-17

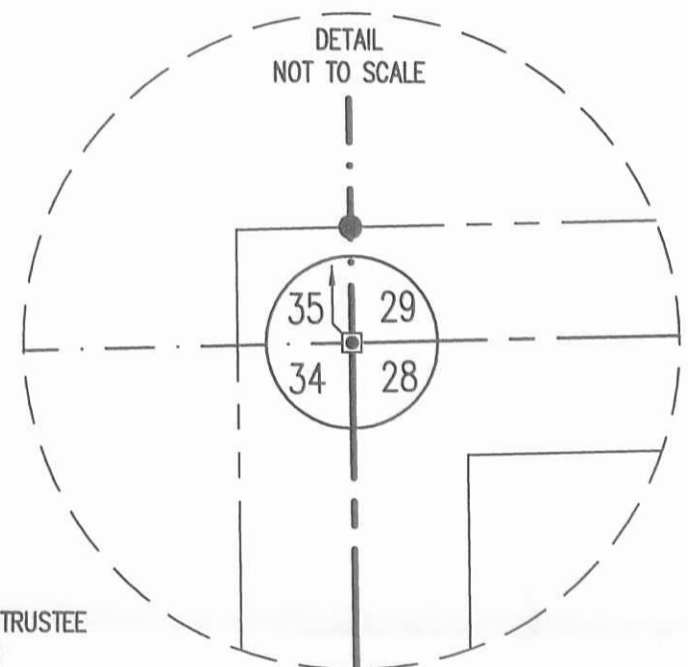
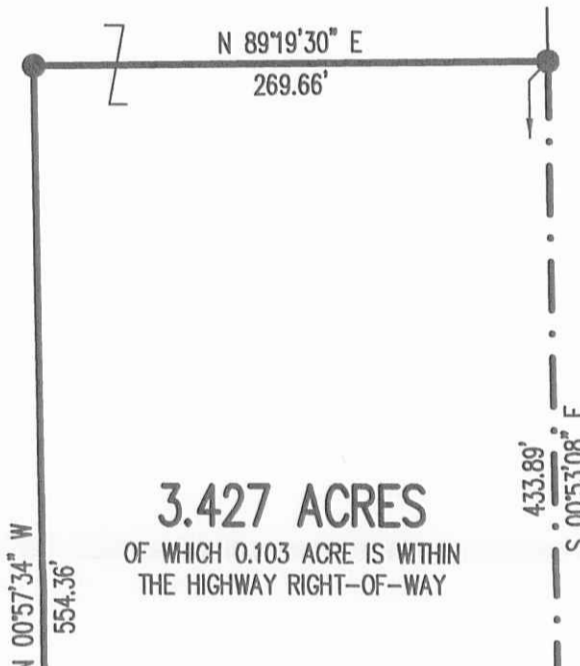
APPROVED

LEE W. DAVIDSON AND  
GINA A. DAVIDSON  
AND LYN A. DAVIDSON  
57-1/2 ACRES  
O.R. 1236, PG. 626  
TRACT ONE



LEGEND:

- 5/8 INCH IRON ROD FOUND IN MONUMENT BOX
- ⊠ STONE FOUND IN MONUMENT BOX
- ⊕ 8 INCH ROUND CONCRETE POST FOUND
- MAG NAIL SET
- 5/8 INCH IRON ROD SET WITH PLASTIC I.D. CAP STAMPED "LSM"



TIM W. DAVIDSON, TRUSTEE  
79 ACRES  
O.R. 495, PG. 654

SECTION 35  
SECTION 34

(2.696 ACRES)  
(0.731 ACRE)

706 (60')

SEE  
DETAIL

**SURVEY OF 3.427 ACRES OUT OF THE  
LEE W. DAVIDSON AND GINA A. DAVIDSON  
AND LYN A. DAVIDSON  
57-1/2 ACRE TRACT  
OFFICIAL RECORD 1236, PAGE 626  
TRACT ONE  
SECTIONS 34 & 35, TOWN 3, RANGE 13  
MIAMI TOWNSHIP  
LOGAN COUNTY, OHIO**

SURVEYED BY:

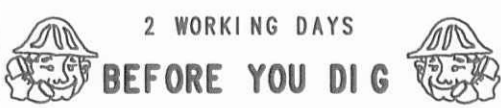
JEFFREY I. LEE  
PROFESSIONAL SURVEYOR 6359  
DECEMBER 14, 2016  
REVISED FEBRUARY 10, 2017

COPYRIGHT 2017 BY:  
**LEE SURVEYING & MAPPING CO., INC.**  
117 North Madriver Street  
BELLEFONTAINE, OHIO 43311  
(937) 593-7335  
WWW.LSMINC.US  
surveys@lsminc.us



ORIGINAL STAMP IN GREEN KSS D0217 62030217 L-6203-3

THIS SURVEY WAS PREPARED IN THE ABSENCE OF  
A COMPLETE AND ACCURATE TITLE SEARCH AND  
DOES NOT GUARANTEE TITLE.



2 WORKING DAYS

**BEFORE YOU DIG**

CALL TOLL FREE **800-362-2764**

OHIO UTILITIES PROTECTION SERVICE

CO. HWY. 68

INDEXED ON MAP  
9701 1P