

REC'D 9-1-06 SAM/OK

# Lee Surveying and Mapping Co., Inc.

Land Surveys • Topography • Subdivisions • Construction Layout

117 N. Madriver St.  
Bellefontaine OH 43311



Phone: (937) 593-7335  
Fax: (937) 593-7444

**1975-2005 - 30 YEARS OF EXCELLENCE**

**ALLEN  
8.628 ACRES**

Lying in Section 36, Town 4, Range 13, Miami Township, Logan County, Ohio.

Being out of the Shirley Ann Allen and John Allen original 153.47 acre tract as deeded and described in Official Record 570, Page 563, Tract I of the Logan County Records of Deeds and being more particularly described as follows:

Commencing at a re-survey monument found in a monument box at the northeast corner of Section 36 on the intersection of center-lines of Township Road 45 and Township Road 33 at the northeast corner of Miami Township.

THENCE, with the east line of Section 36, the east line of Miami Township and the center-line of Township Road 33 (60 feet wide), S 2°-45'-00"W, a distance of 1913.86 feet to a MAG nail set at the TRUE POINT OF BEGINNING.

THENCE, with the east line of Section 36, the east line of Miami Township and the center-line of Township Road 33, S 2°-45'-00"W, a distance of 503.39 feet to a MAG nail set.

THENCE, N 72°-09'-34"W, a distance of 424.06 feet to a 5/8 inch iron rod set, passing a 5/8 inch iron rod set at 31.07 feet.

THENCE, N 57°-54'-52"W, a distance of 234.79 feet to a 5/8 inch iron rod set.

THENCE, N 26°-21'-41"W, a distance of 152.75 feet to a 5/8 inch iron rod set.

THENCE, N 9°-25'-18"E, a distance of 323.62 feet to a 5/8 inch iron rod set.

THENCE, N 29°-05'-31"E, a distance of 187.33 feet to a 5/8 inch iron rod set.

THENCE, N 82°-24'-57"E, a distance of 232.36 feet to a 5/8 inch iron rod set.

THENCE, S 3°-31'-14"W, a distance of 372.79 feet to a 5/8 inch iron rod set.

THENCE, S 86°-02'-33"E, a distance of 74.88 feet to a 5/8 inch iron rod set.

THENCE, N 41°-36'-40"E, a distance of 33.91 feet to a 5/8 inch iron rod set.

THENCE, S 83°-19'-15"E, a distance of 40.07 feet to a 5/8 inch iron rod set.

THENCE, S 3°-38'-56"W, a distance of 34.58 feet to a 5/8 inch iron rod set.

THENCE, S 86°-54'-39"E, a distance of 208.57 feet to the point of beginning, passing a 5/8 inch iron rod set at 178.57 feet.

Containing 8.628 acres, of which 0.344 acre is within the highway right-of-way.

The basis for bearings is the east line of Section 36, being S 2°-45'-00"W, and all other bearings are from angles and distances measured in a field survey by Lee Surveying and Mapping Co., Inc. on August 31, 2006.

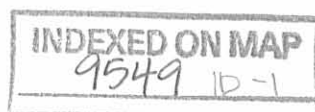


ORIGINAL STAMP IN GREEN

Description prepared by:

Jeffrey I. Lee  
Professional Surveyor 6359  
August 31, 2006

4285076

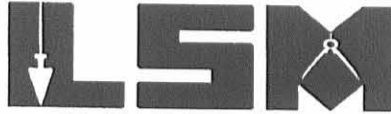


REC'D 9-1-06 SURV OR

# Lee Surveying and Mapping Co., Inc.

Land Surveys • Topography • Subdivisions • Construction Layout

117 N. Madriver St.  
Bellefontaine OH 43311



Phone: (937) 593-7335  
Fax: (937) 593-7444

**1975-2005 - 30 YEARS OF EXCELLENCE**

## ALLEN INGRESS/EGRESS EASEMENT

Lying in Section 36, Town 4, Range 13, Miami Township, Logan County, Ohio.

Being an ingress/egress easement over the Shirley Ann Allen and John Allen original 153.47 acre tract as deeded and described in Official Record 570, Page 563, Tract I of the Logan County Records of Deeds and being more particularly described as follows:

Commencing at a re-survey monument found in a monument box at the northeast corner of Section 36 on the intersection of center-lines of Township Road 45 and Township Road 33 at the northeast corner of Miami Township.

THENCE, with the east line of Section 36, the east line of Miami Township and the center-line of Township Road 33 (60 feet wide), S 2°-45'-00"W, a distance of 1868.59 feet to a point at the TRUE POINT OF BEGINNING.

THENCE, with the east line of Section 36, the east line of Miami Township and the center-line of Township Road 33, S 2°-45'-00"W, a distance of 50.27 feet to a point, passing a MAG nail set at 45.27 feet.

THENCE, N 86°-54'-39"W, a distance of 208.65 feet to a point.

THENCE, N 3°-38'-56"E, a distance of 10.00 feet to point, passing a 5/8 inch iron rod set at 5.00 feet.

THENCE, S 86°-54'-39"E, a distance of 138.72 feet to a point.

THENCE, N 61°-01'-15"E, a distance of 75.78 feet to a point.

THENCE, S 87°-15'-00"E, a distance of 5.31 feet to the point of beginning.

The basis for bearings is the east line of Section 36, being S 2°-45'-00"W, and all other bearings are from angles and distances measured in a field survey by Lee Surveying and Mapping Co., Inc. on August 31, 2006.



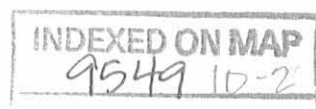
ORIGINAL STAMP IN GREEN

Description prepared by:

A handwritten signature in black ink, appearing to read 'Jeffrey I. Lee'.

Jeffrey I. Lee  
Professional Surveyor 6359  
August 31, 2006

4285076



REV'D 9-1-06 SJM/OK

# Lee Surveying and Mapping Co., Inc.

Land Surveys • Topography • Subdivisions • Construction Layout

117 N. Madriver St.  
Bellefontaine OH 43311



Phone: (937) 593-7335  
Fax: (937) 593-7444

**1975-2005 - 30 YEARS OF EXCELLENCE**

**ALLEN  
10.00 FEET WIDE WELL EASEMENT**

Lying in Section 36, Town 4, Range 13, Miami Township, Logan County, Ohio.

Being an 10.00 feet wide well easement over the Shirley Ann Allen and John Allen original 153.47 acre tract as deeded and described in Official Record 570, Page 563, Tract I of the Logan County Records of Deeds and being more particularly described as follows:

Commencing at a re-survey monument found in a monument box at the northeast corner of Section 36 on the intersection of center-lines of Township Road 45 and Township Road 33 at the northeast corner of Miami Township.

THENCE, with the east line of Section 36, the east line of Miami Township and the center-line of Township Road 33 (60 feet wide), S 2°-45'-00"W, a distance of 1913.86 feet to a MAG nail set.

THENCE, N 86°-54'-39"W, a distance of 133.44 feet to a point at the TRUE POINT OF BEGINNING.


THENCE, with the center-line of this 10.00 feet wide well easement, N 3°-05'-21"E, a distance of 25.00 feet to a point at the terminus of this easement, passing the center of the well at 19.0 feet.

The basis for bearings is the east line of Section 36, being S 2°-45'-00"W, and all other bearings are from angles and distances measured in a field survey by Lee Surveying and Mapping Co., Inc. on August 31, 2006.



ORIGINAL STAMP IN GREEN

Description prepared by:

  
Jeffrey I. Lee  
Professional Surveyor 6359  
August 31, 2006

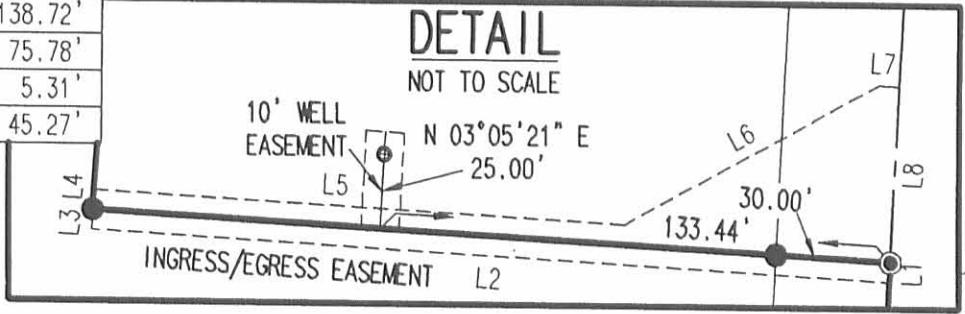
4285076



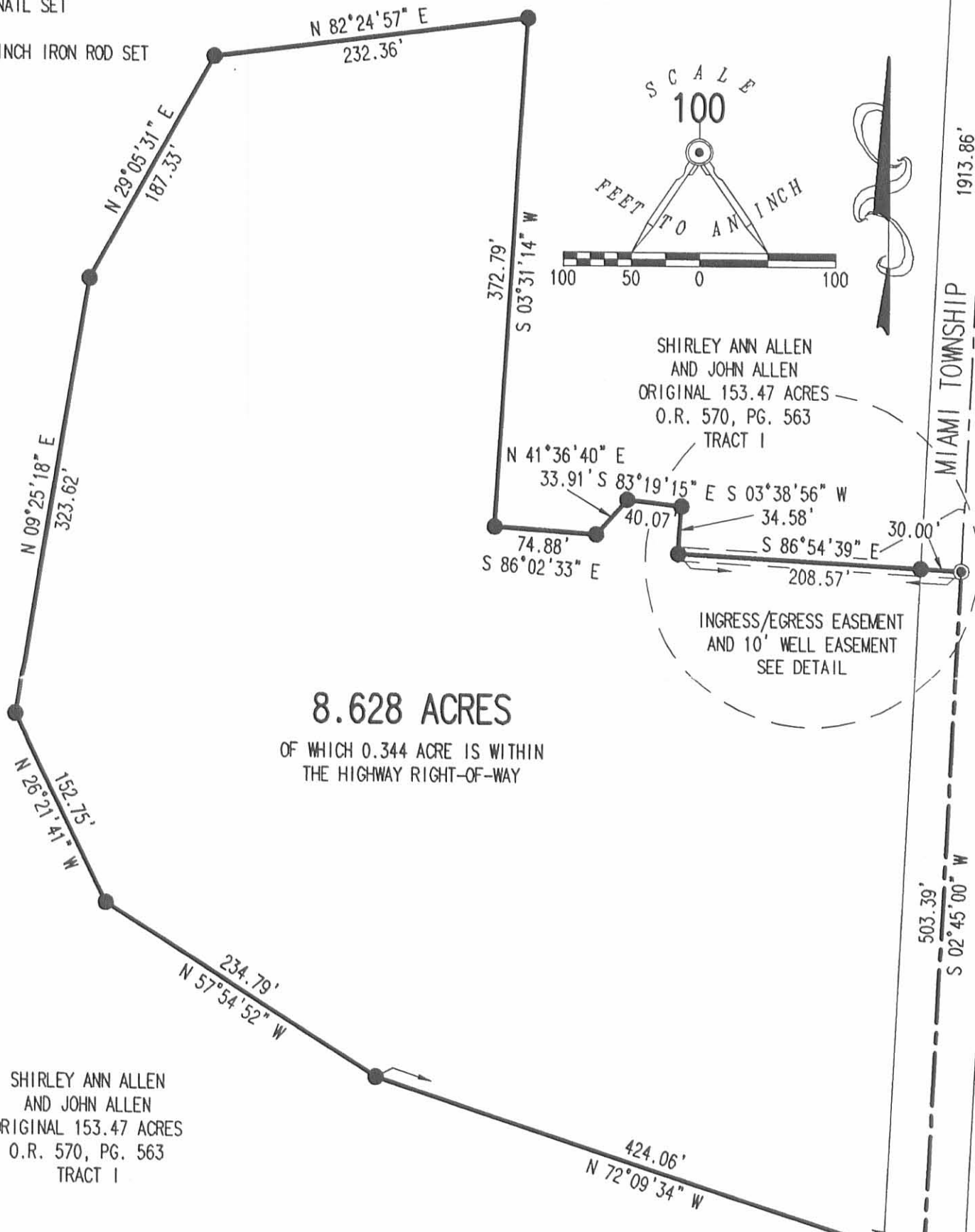
REV'D 9-1-06 S.M.Y.O.K.

LINE	BEARING	DISTANCE
L1	S 02°45'00" W	5.00'
L2	N 86°54'39" W	208.65'
L3	N 03°38'56" E	5.00'
L4	N 03°38'56" E	5.00'
L5	S 86°54'39" E	138.72'
L6	N 61°01'15" E	75.78'
L7	S 87°15'00" E	5.31'
L8	S 02°45'00" W	45.27'

PLEASANT TOWNSHIP TOWNSHIP ROAD 45  
MIAMI TOWNSHIP



- LEGEND:
- ☒ RE-SURVEY MONUMENT FOUND IN MONUMENT BOX
  - MAG NAIL SET
  - 5/8 INCH IRON ROD SET
  - ⊙ WELL



**8.628 ACRES**  
OF WHICH 0.344 ACRE IS WITHIN THE HIGHWAY RIGHT-OF-WAY

SHIRLEY ANN ALLEN AND JOHN ALLEN ORIGINAL 153.47 ACRES O.R. 570, PG. 563 TRACT I

**SURVEY OF 8.628 ACRES OUT OF THE SHIRLEY ANN ALLEN AND JOHN ALLEN ORIGINAL 153.47 ACRE TRACT OFFICIAL RECORD 570, PAGE 563 TRACT I SECTION 36, TOWN 4, RANGE 13 MIAMI TOWNSHIP LOGAN COUNTY, OHIO**

SURVEYED BY:



JEFFREY I. LEE  
PROFESSIONAL SURVEYOR 6359  
AUGUST 31, 2006

2 WORKING DAYS BEFORE YOU DIG  
CALL TOLL FREE 800-362-2764  
OHIO UTILITIES PROTECTION SERVICE.

INDEXED ON MAP 9549 HP

ORIGINAL STAMP IN GREEN

COPYRIGHT 2006 BY:  
LEE SURVEYING & MAPPING CO., INC.  
117 North Madriver Street  
BELLEFONTAINE, OHIO 43311  
(937) 593-7335

KSR D0806 4285076 L-4285-3