

Receipt 3-23-01 2x gen

Lee Surveying and Mapping Co., Inc.

Land Surveys • Topography • Subdivisions • Construction Layout

117 N. Madriver St.
Bellefontaine OH 43311



Phone: (937) 593-7335
Fax: (937) 593-7444

GILFILLEN 13.898 ACRES

Lying in Section 34, Town 3, Range 13, and Section 35, Town 3, Range 13, Miami Township, Logan County, Ohio.

Being out of the Vernon R. Gilfillen original 80 acre tract and original 28.97 acre tract as deeded and described in Volume 405, Page 626, Tracts 1 & 2 of the Logan County Records of Deeds and being more particularly described as follows:

Beginning at a stone in a monument box found at the intersection of the center-line of State Route 706 (60 feet wide) and the west line of the northeast quarter of Section 34.

THENCE, with the said quarter section line and the east lines of the Holmes I. Bell 70 acre tract (Vol. 329, Pg. 128) and the Thomas W. Faulkner original 71 acre tract (Vol. 292, Pg. 698, Tract No. 2), N 4°-28'-53" E, a distance of 976.18 feet to a 5/8 inch iron rod set, passing a 5/8 inch iron rod set at 30.00 feet.

THENCE, S 82°-43'-21" E, a distance of 266.31 feet to a 5/8 inch iron rod set.

THENCE, S 4°-16'-40" E, a distance of 181.97 feet to a 5/8 inch iron rod set.

THENCE, S 82°-37'-29" E, a distance of 377.34 feet to a 5/8 inch iron rod set.

THENCE, S 4°-28'-43" W, a distance of 532.68 feet to a 5/8 inch iron rod set.

THENCE, S 48°-32'-40" E, a distance of 371.57 feet to a railroad spike set on the center-line of State Route 706, passing a 5/8 inch iron rod set at 306.99 feet.

THENCE, with the center-line of State Route 706, N 86°-00'-00" W, a distance of 967.47 feet to the point of beginning.

Containing 13.898 acres of which 0.640 acre is within the highway right-of-way. 12.826 acres are in Section 34, and 1.072 acres are in Section 35.

The basis for bearings is the center-line of State Route 706 being N 80°-00'-00" W, and all other bearings are from angles and distances measured in a field survey by Lee Surveying and Mapping Co., Inc. on March 2, 2001.

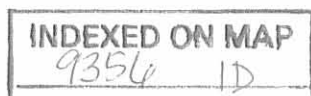
Description prepared by:

A handwritten signature in black ink, appearing to read 'J. Lee', is written over the typed name.

Jeffrey I. Lee
Professional Surveyor 6359
March 12, 2001

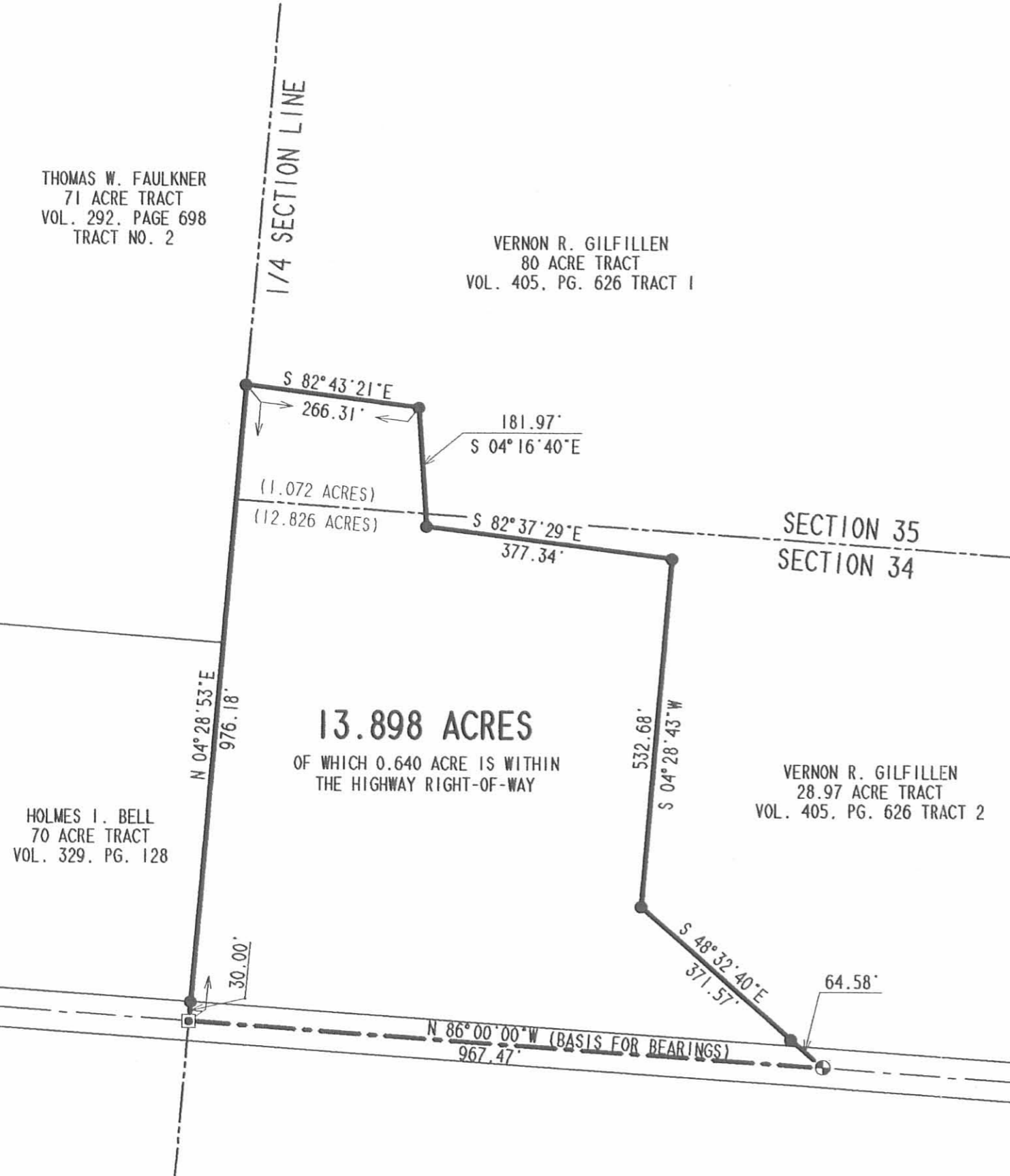


ORIGINAL STAMP IN GREEN L-3107



THOMAS W. FAULKNER
71 ACRE TRACT
VOL. 292, PAGE 698
TRACT NO. 2

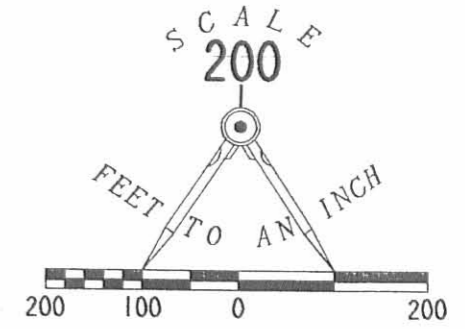
VERNON R. GILFILLEN
80 ACRE TRACT
VOL. 405, PG. 626 TRACT 1



HOLMES I. BELL
70 ACRE TRACT
VOL. 329, PG. 128

VERNON R. GILFILLEN
28.97 ACRE TRACT
VOL. 405, PG. 626 TRACT 2

13.898 ACRES
OF WHICH 0.640 ACRE IS WITHIN
THE HIGHWAY RIGHT-OF-WAY



- LEGEND**
- ⊙ RAILROAD SPIKE SET
 - 5/8 INCH IRON ROD SET
 - ⊗ MONUMENT BOX W/CONCRETE MONUMENT FOUND
 - ⊠ MONUMENT BOX W/STONE FOUND

**BOUNDARY SURVEY OF A
13.898 ACRE TRACT
OUT OF THE VERNON R. GILFILLEN
AND RITA E. GILFILLEN
ORIGINAL 80 ACRE TRACT
AND ORIGINAL 28.97 ACRE TRACT
VOLUME 405, PAGE 626, TRACTS 1 & 2
SECTION 34, TOWN 3, RANGE 13 AND
SECTION 35, TOWN 3, RANGE 13
MIAMI TOWNSHIP
LOGAN COUNTY, OHIO**



SURVEYED BY:
[Signature]
JEFFREY I. LEE
PROFESSIONAL SURVEYOR 6359
MARCH 2, 2001

706 (60' R/W)

ORIGINAL STAMP IN GREEN

COPYRIGHT 2001 BY:
LEE SURVEYING & MAPPING CO., INC.
117 North Madriver Street
BELLEFONTAINE, OHIO 43311
(937) 593-7335

INDEXED ON MAP
9350

2 WORKING DAYS
BEFORE YOU DIG
CALL TOLL FREE **800-362-2764**
OHIO UTILITIES PROTECTION SERVICE.