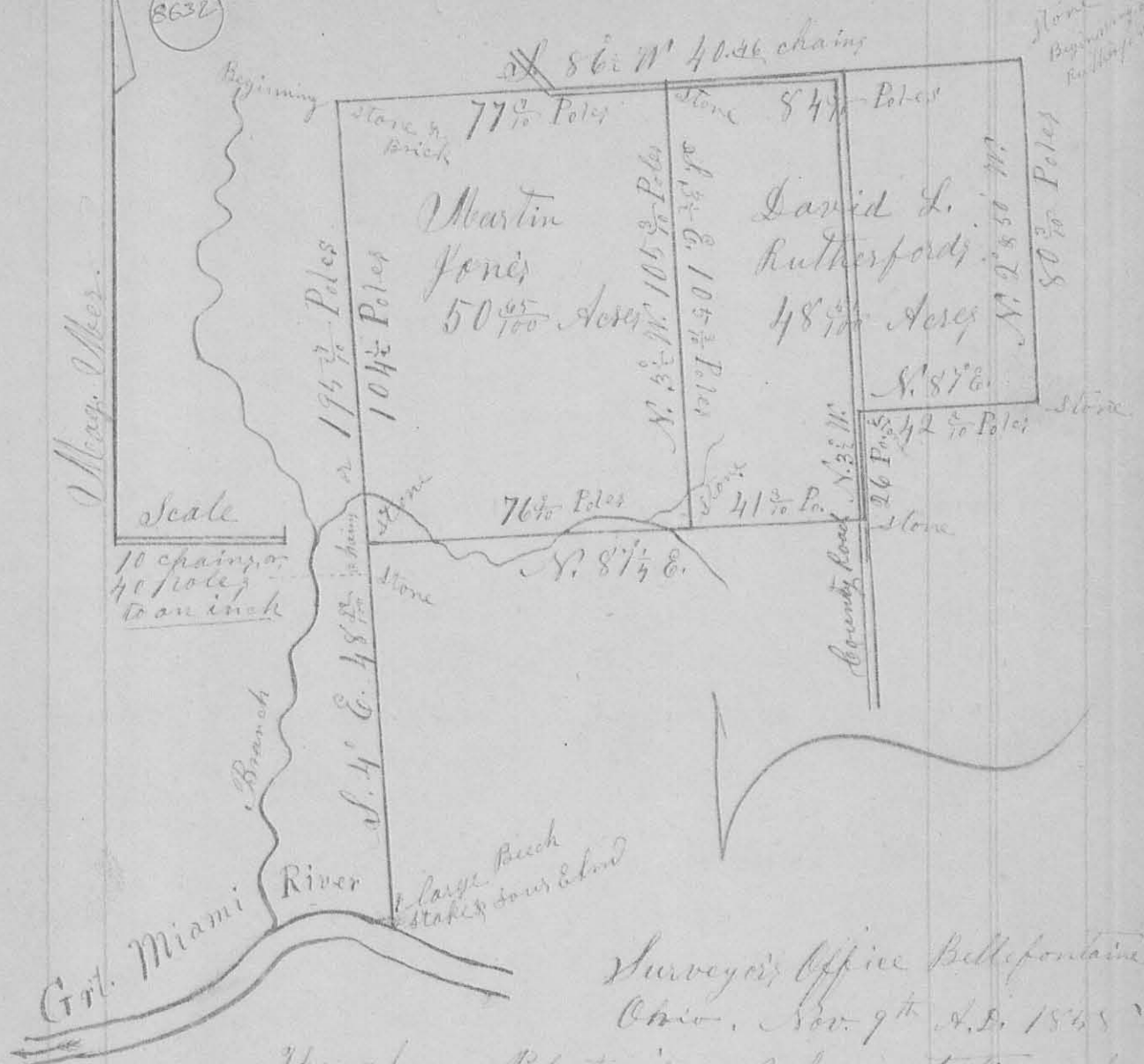


Survey No. 797 & 798

8632



Surveyor's Office Bellefontaine Ohio, Nov. 9th A.D. 1868

The above Plat is a representation of a Survey made on 21st day of Oct. A.D. 1858, by me, H. C. Moore, County Surveyor of Logan County, Ohio, by request of Martin Jones and David L. Rutherford, of Miami Township of said County; for the purpose of establishing the section line & corners between fractional Section No. 21 & 22 of Town No. One, and Range No. 8, E. M. M., and to divide the North part of the west fractional half, of said fractional section No. 22, (being in said township of Miami) between said Jones & Rutherford, and to establish the line & corners thereof, which I did in the following manner: to-wit;

Beginning at the N. W. corner of said fractional Section No. 22, where I planted a long blue stone on the North side of a hill, with three pieces of brick under it, from which I found the roots of a Beech tree bearing South 75° E. 12 links distant, said (by John Armstrong, an "Old settler", residing near the place, & others) to be the roots of the Original witness tree, & the only Beech that ever stood near the Original corner, (said roots being the only remains of the original witnesses now to be found). I also marked a Walnut tree 10 Ln. Dir. bearing S. 71° E. 11 links distant from said stone, and a Willow 8 Ln. Dir. N. 6° E. 45 links. Done in the presence of Martin Jones, David L. Rutherford, John Armstrong, Abel Armstrong, Mr. Richter, Luster Berry, James Berry, Ezra L. Stiles, and Menzo Grafton; Run thence S. 4° E. 175° poles, crossing a branch, and passing with a range of old marked line trees, to the North bank of the Great Miami River where I drove a stake, and marked a sour Elm (thus) X' 18 Ln. Dir. bearing N. 87° E. 8 links distant; (Also passed about five link west of a large Beech, near the river, marked on the west side, thus $\left. \begin{array}{l} S. 22 \\ T. 1 \\ R. 8 \end{array} \right\}$, cut in the bark, & having the appearance of having been done by the Original Government Surveyors, out of which I cut a block, in which was an ax, or Tomahawk mark made, over which were more than fifty years growth of wood, —

Then, Beginning at the aforesaid N. W. corner of fractional section No. 22, run then with the "W." line of said Sect., S. 4° E. $10\frac{1}{2}$

Poles to a stone, which I planted as sd. Martin Jones S.W. corner, from which I marked a Dogwood 4 Ln. Dir N. 2° E. 15 1/2 links distant, an Ash 6 Ln. Dir N 49 1/2° E. 39 links, a W. Oak 3 Ln. Dir S. 48 1/2° E. 25 links, Thence N. 87 1/2° E. 16 7/10 Poles, crossing a small Branch three times to a flat stone ^{marked '+'}, which I planted as said Jones S.E. corner, and David Rutherford S.W. corner, from which I marked a Beech 12 Ln. Dir, thus 'X', bearing N. 72 3/4° W. 32 links, a Beech 11 Ln. Dir. N. 13 1/2° E. 40 links, & an Ironwood 3 Ln. Dir. N. 60° E. 15 1/2 links distant; Thence N. 3 1/2° E. on the line between said Jones & Rutherford, 105 5/10 Poles, to the N. line of the sd. fractional Sect. 22, where I planted a stone, marked thus '+', as the N.E. corner to said Jones land, & the N.W. corner to sd. Rutherford's land, from which I marked a Hickory 8 Ln. Dir. bearing N. 67 1/2° W. 99 links, and a Beech 15 Ln. Dir. S. 20° E. 54 links; Thence with the N. line of sd. sect. S. 86° W. 77 7/10 Poles to the place of beginning, Containing 50 ⁶⁵/₁₀₀ Acres; Witness trees all marked thus 'X' facing the corners;

Beginning at a stone, at the North East corner of said West fractional half, of fractional section No. 22, from which a W. Oak 12 Ln. Dir. bears, N. 71° E. 31 links, & an Ash 12 Ln. Dir. N. 22 1/2° W. 27 links, - Run thence with the North line of the section, S. 86° W. 84 7/10 Poles, to the stone marked thus '+' which I had planted as sd. Jones N.E. corner & Rutherford N.W. corner from which a Hickory 8 Ln. Dir. bears N. 67 1/2° W. 99 links, & a Beech 15 Ln. Dir. S. 20° E. 54 links; Thence with sd. Jones' E. line

David S. Rutherford's land

S. $3\frac{1}{2}^{\circ}$ E. $105\frac{3}{10}$ Poles to a flat stone marked +
 at Jones S. E. corner, from which a Beech
 12 Ln. Dir. bears S. $72\frac{1}{4}^{\circ}$ W. 32 links; a Beech 11 Ln.
 Dir. N. $13\frac{1}{2}^{\circ}$ E. 40 links; & an Skonwood $\frac{3}{4}$ Ln. Dir.
 N. 60° E. 15 links; Thence N. $87\frac{1}{4}^{\circ}$ E. $41\frac{3}{10}$ poles
 to a stone in a County road, near a
 large stump; Thence N. $3\frac{1}{2}^{\circ}$ W. with said
 road, 26 Poles to a stone from which a Beech
 10 Ln. Dir. bears S. $87\frac{1}{4}^{\circ}$ E. $11\frac{1}{2}$ links; Thence
 N. 87° E. $42\frac{6}{10}$ Poles to a stone at Ezra Stiles
 S. W. corner, from which an Elm 9 Ln. Dir.
 bears S. 51° E. 50 links, & a W. Oak 11 Ln. Dir.
 N. 21° E. 55 links; Thence N. 21° W. 50° W. $80\frac{3}{10}$
 Poles to the place of beginning, containing
 $48\frac{5}{100}$ Acres

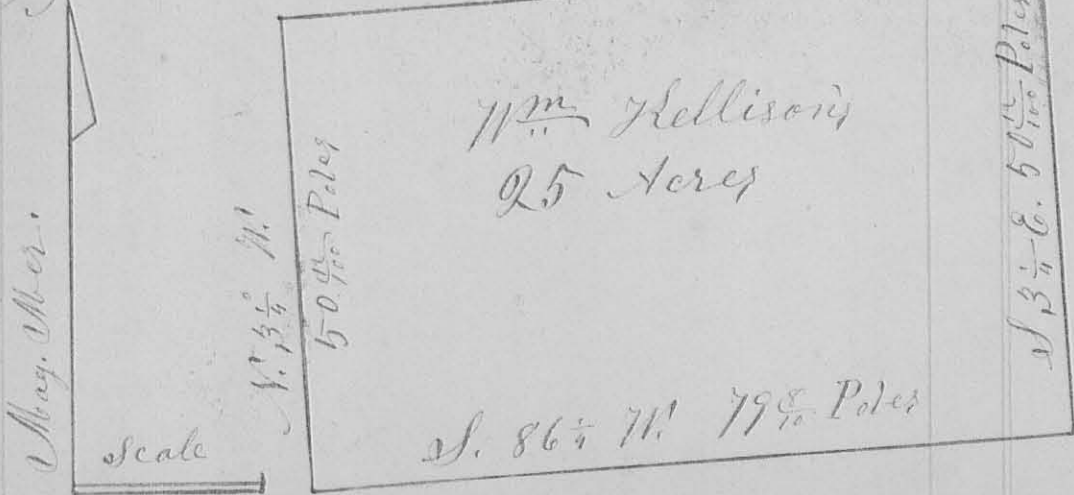
All the afore named witness trees are
 marked thus 'X' cut in the side facing the
 corner,

Abel Armstrong
 & Ezra Stiles } Chain Men
 I hereby certify that the foregoing plat &
 report are correct, - J. C. Moore,
 Co. Sur. of Legad Co. Conn.

8633

Survey No. 799 -

N. $86\frac{1}{4}^{\circ}$ E. $79\frac{8}{10}$ Poles



Scale
 20 Poles
 to an Inch