

296

Magnetic Mer. var. 30° E

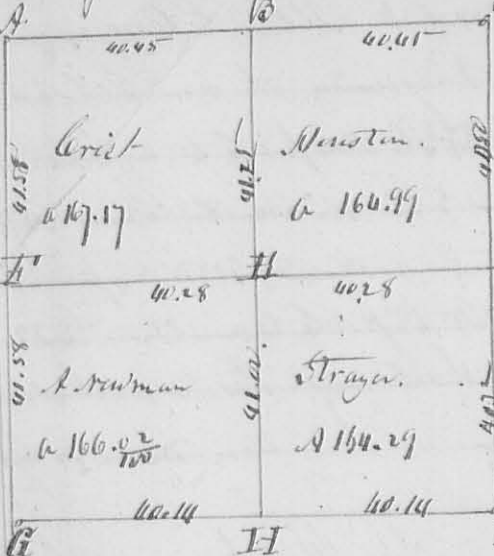
Description of Corner.

S10. T3 R13

M. 128.

N^o 433

8442



- A Hickory 12 L. S. 11 W. 21 S. (down).
- ditto 12 L. S. N 26 W 30. (down) planted Stam.
- B White Oak 15 L. S. 54 E 23 Links.
- ditto - S. N 80 W 15 Links.
- C Corner tree all down. Stam planted.
- D Jack O. 6 L. S. 20 S 48 W 5 Links & Stam.
- Elm 12 L. S. N 80 E 61 "
- E White O. 15 L. S. East 7 "
- ditto 6 L. S. N 14 W 17 "
- F Buckskin 8 L. S. 55 W 31 "

a White Oak 20 L. S. N 80 E 57 Links, + Stam - C Buck 6 L. S. 58 E 3 Links. Cherry 18 L. S. 24 W 19 L. H Sycamore 15 L. S. 58 E 52 Links, + Stam. cap of creek - I. S. E Corner of Sect. Bearing trees all decayed. at same time
 Survey for N. Strayer. Beginning at D. thence East 12 chains to Red Oak 18 L. S. E. Corner thence S 1/2 W 25 chains to a 12 inch Walnut 3 L. S. Corner tree, thence West 12 chains to a Dogwood 6 L. S. Corner tree, thence N 1/2 E 25 chains to the beginning containing 30 acres.
 Survey on Dec. 4, 5 & 6th. L. S. H. S. P. K. 60 S. 260

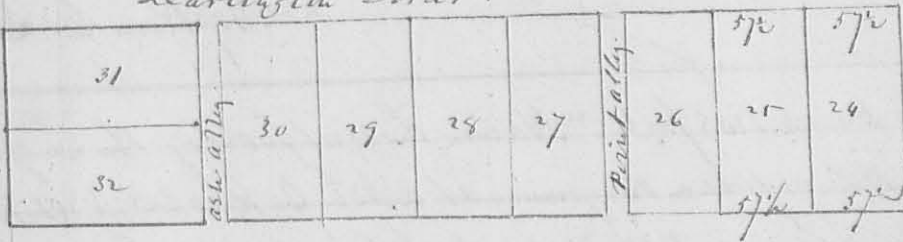
Strayer

Charlinton Street.

434

8443

Liberty Street.



The foregoing plat represents an addition to Chambers addition to Quinay made by Chambers Jan. 1. 1839. The Survey continues from the former addition, on the same course, the lots all being 4 poles front by 8 poles back, excepting N^o 24.5 which front only 5 poles.

L. S. H. S. P. K. 60 S. 260

435

8444

Survey Jan. 1. 1839 for Man. Lov. Chambers, part of the 1/4 quarter of S28. T3. R13 M. R. as follows: Beginning at a Buck 6 L. S. 51 S W 7. and Buck 6 L. S. 58 E 11 Links East of the SW Corner of said q. 280 ch. thence N 1/2 E 11.7 chains to an Ash 3 L. S. East 24 links. Buck Oak 15 L. S. N 11 W 17 Links thence East 17 chain to a Buck 8 L. S. N 18 E 25 Links White Oak 48 L. S. N 45 W 7 Links, thence S 1/2 W

11.76 chain to a Black 18 S D N 62 W 10 Links. Black 15 S D N 88 E 11 Links then West 17 chains to the beginning containing 20 acres -
 Thence from the White Oak & Black corner, N 7 E 9.42 chain to Black 18 S D N 62 W 4 Links; thence West 17 chains to a Black Ash 8 S D N 60 E 15 Links ash 4 S D 26 Links; thence S 1/2 W 9.42 chain to an ash 3 S D East 24 Links, Bar Oak 15 S D N 110 W 17 Links; thence East 17 chains to the beginning containing 16 acres -

INDEXED ON MAP
8444 1D-2

436
8443

Jan'y 5. 1839 Survey for James Hanrod, part of Survey N 9952 in name of Robt Meam as follows. Beginning at Ford Lym, from 1 Root both down (planted a stem) thence N 78 E 100 1/2 pole to a Black ash stem, thence N 12 W 165 pole crossing a branch at 112 1/2 to an Elm and Lym. thence S 78 W 100 1/2 pole to a Lym & Sugar, with bank of a large run, thence S 12 E 165 pole to the beginning containing 103 2/100 acres.
 D. Hopkins S. L. C. O.

437
8446

Surveyed for Henry Ramer January 28. 1839 part of Survey N 4682 Beginning at two Sugar & Poplar both down, thence N 37 W 196 pole to R. Oak Poplar & Lym, thence S 25 W 33 pole, passing 3 Black 77 1/2 corner to Henry Ramer at 195 pole, (Stem & 2 Sugar) to two Sugar, Lym & Elm (all down) thence thence S 65 E 48 pole to 2 Lym, cut down, thence N 53 E 270 pole, passing a stem at 130 pole to the beginning, containing 215 acres: a gap for the stem and 2 Sugar, passed in the 2nd line, at 195 pole & S 65 E 60 pole to a Black; thence S 53 E 85 pole to a Lym & Black, thence N 1/2 W 74 pole to a stem & poplar, thence N 80 W 70 pole to 3 Black, passed as above at 77 pole, thence S 25 W 118 pole to the beginning. (83.78) acres.
 D. Hopkins S. L. C. O.
 from corner cut. S 55 E 111 pole to stem paper. 3
 in the closing line of foregoing 215 acres.

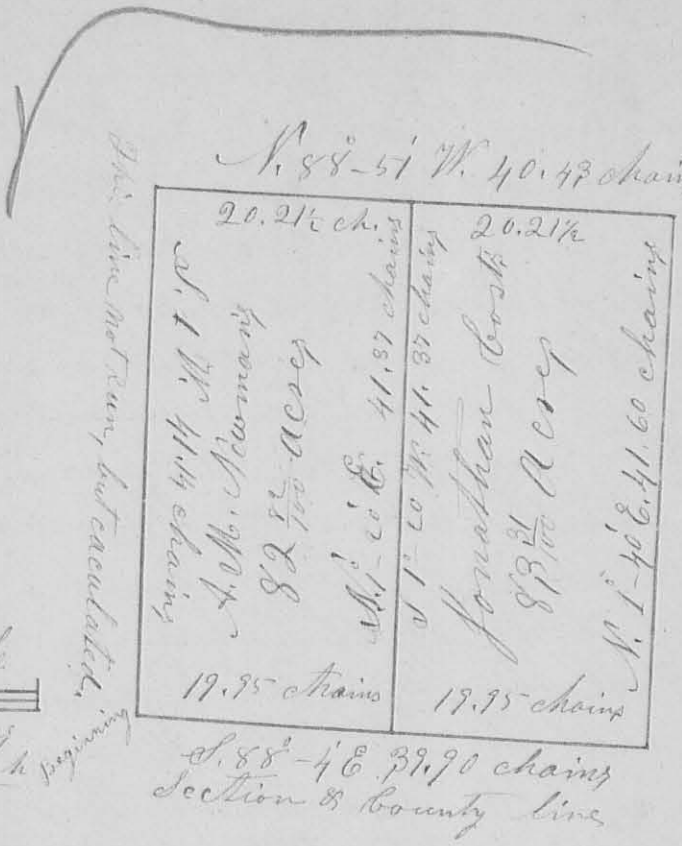
A 63.56 + 67.66 + 83.78 = 215.

Survey No. 785

8444

Magnetic Meridians

Scale
30 chains
to an inch



Surveyor's Office Bellefontaine Co.
April 29th A. D. 1858

The above plat represents the South West quarter of Section No. 28 of Town No. 3. 33, Range No. 13, E. G. M. R. S. in Miami Township Logan County Ohio, as surveyed by me, H. C. Moore County Surveyor of said County of Logan, on the 8th day of April A. D. 1858, at the request of A. M. McManis and Jonathan Cost for the purpose of establishing the N. E. corner of the said quarter (it being also the centre corner of the said section) & the line and corner between the East & West halves of the said S. W. quarter; which I done in the following manner; to wit:

Finding the original half mile corner in the West line of the section; to wit, a stone, from which I found a Beech stump

N. 32° W. 11 links; And a stone in the south line of the Section, at the original half mile corner, from which I found a Beech stump N. 30° E. 17 links; & from which I also marked an Ash 'X' 22 In. Diam. N. 23° E. 36 links, & a Beech 'X' 22 In. Diam. N. 34° E. 37 links; And further; finding a stone at each of the four section corners; I measured the North and East lines of the Section, Then run a right line from the witness corner in the South line of the section, to the centre of the North line of the same; and another right line from the centre of the East line of the Section to the witness corner in the West line of the same; and at the intersection of these right centre lines, in the centre of the section, I planted a stone & some brick as the centre, quarter corner of the section, or the N. E. corner of the said S. W. quarter, from which I marked an Elm 'X' 1 $\frac{1}{2}$ In. Diam. S. 59° W. 18 links; & an Ash 18 In. Diam. N. 18° E. $33^{\frac{1}{2}}$ links.

I then run a right line from the middle of the South line of the said S. W. quarter, where I planted a stone with two pieces of brick under it, & marked a Swamp Elm 'X' 8 In. Diam. N. 59° W. 78 links; and a Bur Oak 'X' 10 In. Diam. S. 63° W. 70 links;

Thence N. 1-20 E. 41.37 chains to a stone & some pieces of brick which I planted in the middle of the North line of the same said quarter section, from which I marked a Hickory 12 In. Diam. S. 4° W. links. This last line, run as the line between the East & West halves of the said S. W.

quarter, All Done in the presence of the chainmen, A. M. Newman, & Jonathan Cost; and the centre corner of the section planted in the additional presence of Joseph S. Davis & Daniel Souder.

I also calculated, from this measurement, the length & bearing of the West side of the quarter, which I thus find to be S. 1° W. 41.14 chains. And find the West half, A. M. Newman's part, of the quarter to contain 82.82 Acres, And the East half, Jonathan Cost's part, to contain 83.75 acres. The length & bearing of all the lines are represented on the foregoing plat.

David Latimer }
W. J. Allen } Chainmen

I hereby certify the foregoing plat and report to be correct.
H. C. Moore County Surveyor
of Logan County Ohio

INDEXED ON MAP
8444 2D-3