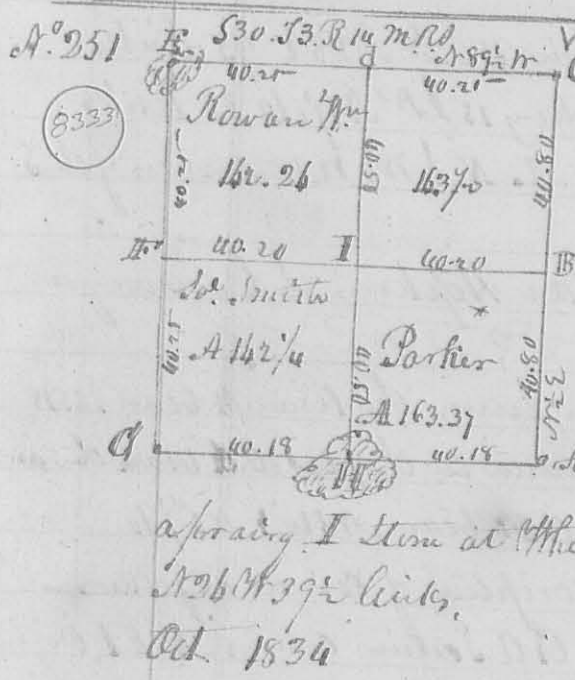


Oct. 1835

Divided the adjacent lot as follows. Beginning N 35° 50' W 17.70 from the N.W. corner thereof at a Hickory 10 W 186 W 33 links, Water Beech 5 W N 32° E 33. then N 86° 10' E 26 chains to a Beech 24 W N 75° E 21 1/2 links and Beech 18 S W N 81° W 28

San Hopkins, L. Sawyer or

N^o 250 Surveyed Oct 1835 the South portion of the N.E. q^r. of tract l. 18. 57.5 R 9 E. Beginning at Truin's S. E. corner, then N 35° 50' W 20.25 to W. Oak 18 L W N 45° W 27 links, and same 18 L W S 59° E 49 links, then N 86° 10' E 32 chains to a Sugar 15 L W S 79° E 13 B. Hickory, 12 L W N 37° 34' E. then S 94° E 21.50 to an Oak 12 L W N 84° E 27 links, W. Oak 12 L W S 54° E 4 L. then S 86° 10' W 39.50 to the beginning. Containing 72 1/2 acres
Oct. 1834
San Hopkins, Sawyer or L.



The lines of this survey run at 90° E from the original course, which was due north - distance as marked on the lines. Description of corners. B. E. A. Beginning of this survey. S. E. corner of the section B. Bur. Oak 18 In. dr. N 37° 125' S. and same 20 N 182° 130' L. C. Sect. corner. d. Bur. Oak 12 L W N 73° E 89' Hickory 10 S 73° W 16 Links. E. Stake in a prairie - F. orig. q^r. corner. C. Sect. corner. H. Stem in a prairie. I. Stem at White Oak 10 L W S 72° W 80 Links. Bur. Oak 12 L W N 26° W 39 1/2 links.

San Hopkins, Sawyer or L.

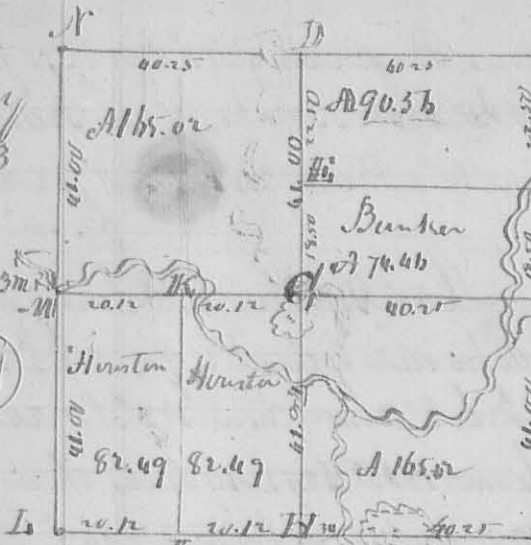
N^o 252 For Prichard & Bunker. Exchange of land. Surveyed for Prichard, deeded to Bunker. Beginning at a stake in the line between the S. E. & N. E. q^rs. of S. 23. R 12 M. R. D. then S 89° W 20 chains to a White Oak 22 L W N 57° 55' and same 12 L W S 88° E 92 L. then S 82° E 14.77 to the creek area then with the meanders of and up the creek to the beginning. Containing 8.75 acres. Then for Bunker, deeded to Prichard beginning at the SW corner of the N. E. q^r. of said tract in then N 75° E 7.50 to a stem then N 89° E 9 chains to the road, then S 4° E 4.75 chains. S 82° E 5.50 ch. to White Oak 22 L W N 57° 55' L. do. 12 L W S 88° E 92 links in the line between the N. E. & S. E. q^rs. then S 89° W 15 chains to the beginning. 8.75 acres
Oct. 1834

San Hopkins, Sawyer or L.

Survey
N^o 253

S. 13 R. 13 m. E.

8337



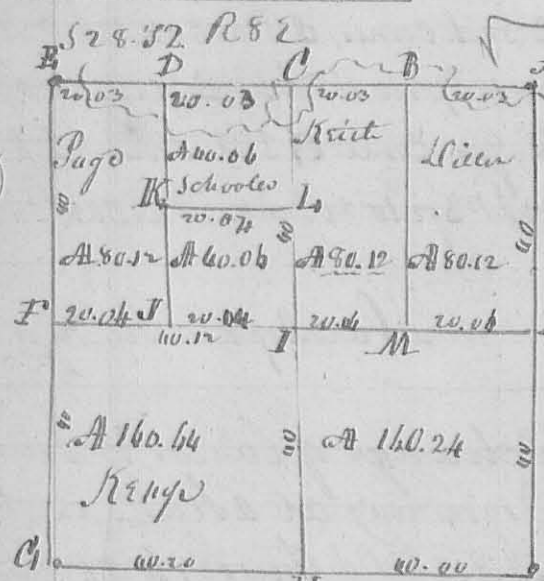
This plat represents the Survey & Sub. divi-
 ion of S. 13. R. 13. M. E. bearing of the line
 of due course with variation 30' N. for the
 length of the lines, and contents of the lots
 B was the plat. Description of corners -
 A. S. E. corner of the S. 13. R. 13. M. E. N 68° 10'
 White Oak 16 1/2' 135 1/2' 20 links
 B. B. Oak 20 1/2' 131 10' 7/8' 24 1/2' links and
 A White Oak 185' 543' 30' S.

C. Mr. Oak 16 1/2' 16. and white oak 12 1/2' 181' 32' links
 D. Hickory 4 1/2' 135 1/2' 57 1/2' links, R. Oak 26 1/2' 131' 10' 7/8' ditto
 E. B. Oak 8 1/2' 134' 10' 21' links, Hickory 8 1/2' 134' 10' 21' 1/2' 19 links
 F. Stake near a branch.
 G. Bur. Oak 15 1/2' 130' 10' 109 links, same 15 1/2' 128' 93 links
 H. B. Oak 12 1/2' 148' 50 links, Hickory 15 1/2' 117' 10' 33 links
 I. K. Stake. M. Stake in a prairie. L. N. S. M. N. W. corner of the S
 Oct. 1834

San Hoptim, L. C. Surveyor

N^o 254

8338



In this Survey the line A. bears 185° W
 for distance to the plat. C. A. bears the same
 C. A. & C. E. bear N 3° W & N 5 1/2' W.

Description of corners as follows -
 N. A. E. C. O. Section corner, N. H. Origin
 of gr. Parts.
 B. Lyrus 18 1/2' 187' 10' 39' Buck eye 3
 1/2' 187' 30' S. M. Buck 10 1/2' 187' 10'
 36 links, Elm 6 1/2' 150' 19 links
 I. Beech 18 1/2' 172' 10' 10' Beech 18 1/2' 172' 10' 30' links C. Elm 185' 10'
 links, Gray Ash 8 1/2' 144' 10' 18 links, K. Hickory 18 1/2' 155' 10' 10'
 Beech 3 1/2' 112' 10' 20 links, L. Buck 18 1/2' 163' 10' 3 links and
 Buck 12 1/2' 154' 10' 25 links, D. Buck 12 1/2' 133' 10' 12' Buck 10 1/2' 189'
 26 links, F. Buck 22' 133' 10' 17 links, Beech 18 1/2' 161' 10' 37 links, J. Stake
 in the line N. E. with 6 links 185° W from I.

Oct. 21. 1834

L. Hoptim Surveyor L. C.