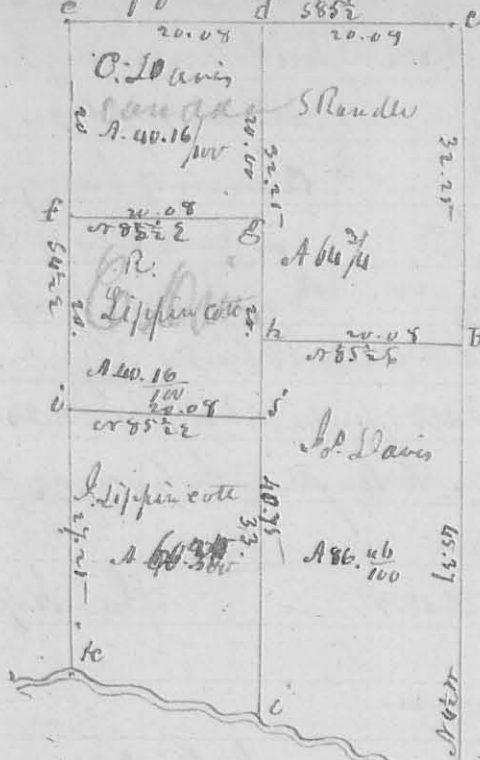


N<sup>o</sup> 242

Sub. division of tract S. 23. T. 1. R. 8 E  
d 585 1/2

201.

(8326)



In the survey of this half of the tract. of the course and distance of the lines are marked on the plat. the Description of the corners, is as follows, beginning at  
 a. original Sect. corner.  
 B. N. 63 1/2 W 57 1/2 links, N. 0. 24 S 39 E 23 links - c Sect. corner.  
 D. Hickory 24 1/2 S 40 E 10 links, and  
 land 6. N 65 W 25 E. orig. corner  
 E. Beech 10. W 71 W 18 links, and  
 land 10. S 62 E 42 do.

at g. N. 0. 18 W S 42 E 13. & Beech 12 W  
 and White oak 20. N 38 E 35 links. i R. O. 12 W S 73 W as Beech 18 S 85 E 42.  
 i. Dogwood 3 W S 42 W 16 E. Gray alth 22 W N 11 W 34 links. k Stone - corner  
 O. Jukka Mulberry 20 W S 86 E 18 E Elm 48. W N 86 W 12 links.

N. vs.

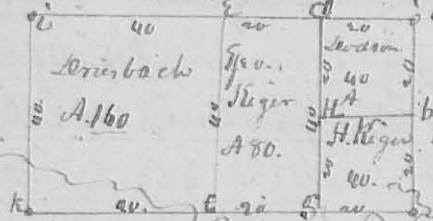
R. Lippincott  
 G. Davis ch. carriers  
 June 5<sup>th</sup> 1834

L. Hopkins Depy Sur. S. C.

N<sup>o</sup> 243

N<sup>o</sup> 528 S 75 R 8 E Lewis town Reser.

(8327)



this plat represents the sub. divi-  
 sion of tract. S. 28. T. 1. R. 8 E Lewis town  
 Reservation, the lines run as follows  
 N 3° 50' W. and at right angles

then with the description of the corners is as follows. a q. corner on east  
 line of the section. b Hickory 8 W N 65 E 15 links. Ironwood 3 W S 30 W  
 33 1/4 links. c Sect. corner. d Beech 8 W N 85 E 38 links. alth 24 W  
 148 W 25 links e q. corner. f q. corner. on sub. division line back 24  
 W S 30 E 32 Ironwood 3 W N 63 W 39 links. g. Beech 18 W N 4 W 12 links  
 N. O. 3 1/2 W S 20 W 18 links. H. Sugar 22 W. corner tra

P. Hoys  
 J. Dillen } ch. carriers  
 June 16. 1834

L. Hopkins depy Sur. S. C.