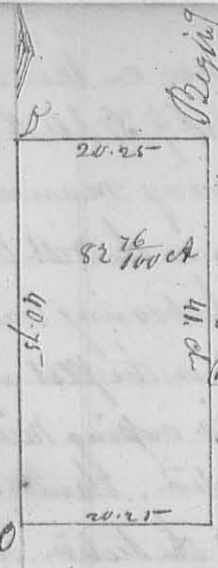


N^o 228



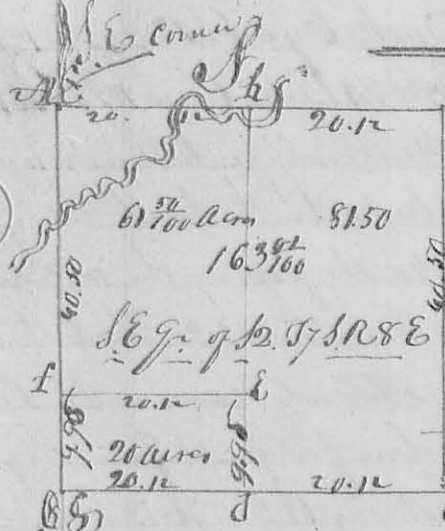
A Surveyed Sept. 1833 for Jonathan Lorton
 the E half of the SW q^r of S23 T3R13W2S. as follows. Begin
 ning at the interior q^r corner at a Beech 22nd N 39^o 59' E.
 a Rod a Beech 8th S 70^o 23 Links. thence South 41 chains to a
 Beech 12th North 10 E. 50 8th S 60^o 9 E thence West with the
 South line of the section 20 ch. 25 L to a Beech 18th S 61^o 33 Links
 and same 22 E. S. N 7^o 39 E thence North 40 ch. 75 Links to a
 Beech 12th South 8 E. 50 10th S 76 34. thence N 89 56
 20 chain, 25 links to the beginning containing Eighty two and twenty six
 hundredths of an acre -
 D. Hopkins depy. S. L.

8311

8312

Surveyed September 18th 1833 for M. J. Alex. Sitke tract a part of
 S22 T3R8 E the NW 1/4 of SE q^r & NW 1/4 of NE q^r of the foregoing section
 as follows. Beginning on the north boundary 80 poles West of the NE
 corner of the section at Gauley 6th S 32^o E 88 Links N. 30th S
 S. or 121 links. thence S 33^o E 80 ch. 25 links to a White Oak 22nd S
 78^o 12 links. 50 20th S 86^o 47 links. thence S 86^o 10th W 7 ch. to a stake in
 a prairie in the line of a tract of land sold granted by Congress to
 Nancy Stewart and heirs. thence N 20^o W to the NE corner of said
 N. Stewart's tract. thence S 72^o W to a point that a line bearing S 35^o E
 from the q^r corner on the north line of the section will strike this point. then
 N 35^o W 78.75 links to the q^r corner on the north line of the section. thence
 N 86^o 10th E 20 chains to the beginning. Containing 156. Acres
 D. Hopkins depy. S. L.

N^o 229



B. orig. corner. notes y^e ✓
 1st AB S 86^o 10th W 40.25 ch. crossing river 2 times to orig. corner
 BC N 33^o 50th W 40.50 ch. to corner at C. thence
 CG N 86^o 10th E 40.25 to the NE corner of the q^r. thence
 GA N 33^o 50th E 40.50. crossing the R. River to the beginning
 containing 163^{7/100} acres - but divided as follows into
 two equal parts. beginning on the south line of the
 q^r at the "a" & "b" corner box. thence N 35^o 50th W 40th S
 chain to "d". a Maple 14th S 83^o 07 27 links. an Ash 18th S 10th N 40 links
 then off the north end of the east half of said q^r. laid off 20 acres as above
 thence. corner at "e". Beech 12th N 76^o E 35 50 or S 55^o W 30 links. corner at "f"
 Beech 8th S 109^o W 19 E. 50 10th S 37^o W 27^o. at G NE corner of the q^r. orig. corner.
 Sept-18. 1833
 D. Hopkins, depy. S. L.

8313