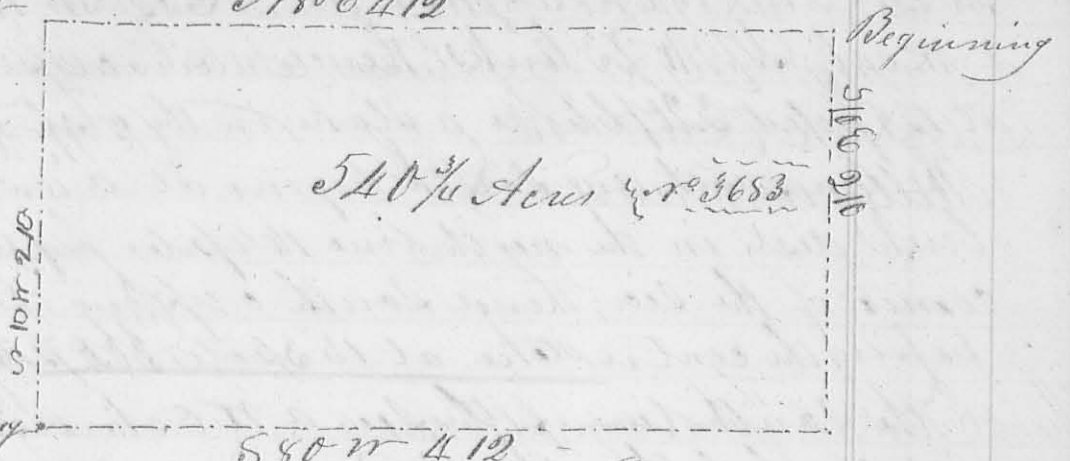


131

780° E 412 (cropping several small branches) to the begin-
 -ning of the survey containing 540 3/4 acres
 the south side of the said survey

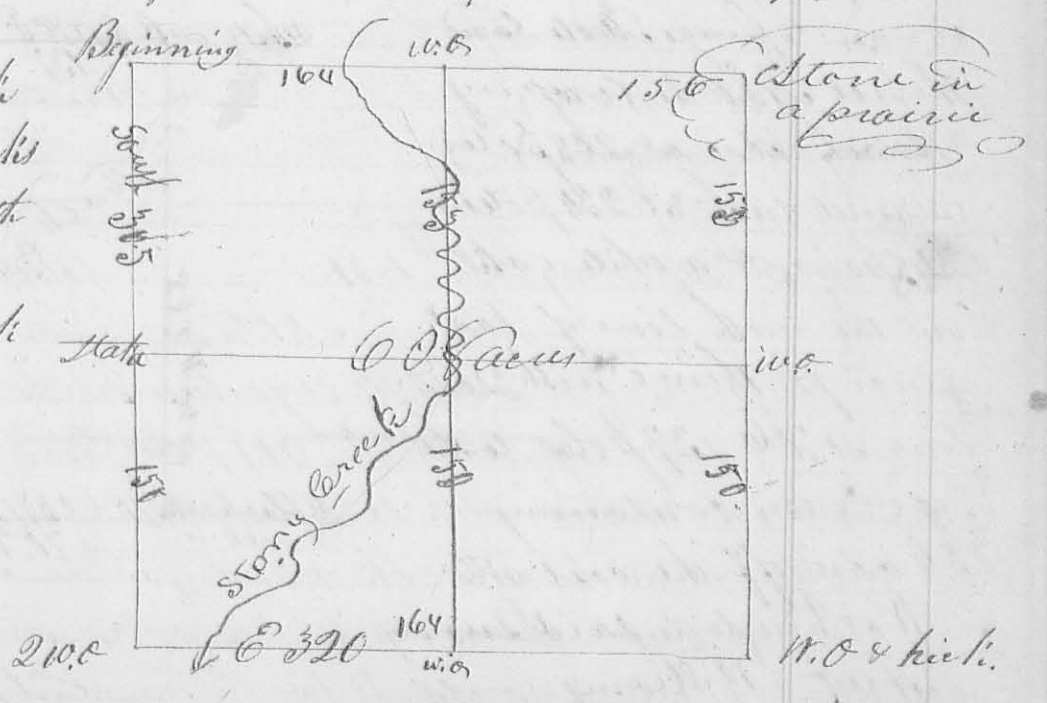


Dlymn
 Oliver survey
 Robert M. Harmon }
 Samuel J. Harmon } 66
 J. McCallum
 C. S. L. C.

Martin G. (McCallum) 20th 1831 Survey No 167
 (Surveyed and divided Section 36 Town 4 Range

15 N. 20. W. as hereafter shown, for Martin Garter and others
 Beginning at the north west corner of the sec. original bear-
 -ing tree, a cherry tree, now down, 6 links dist. west
 a white oak now 18 in. diam. east 5 links; thence south
 with the original line 305 poles to the south west corner
 of the sec. original corner is a W.O. now 20 in. diam.
 W 41 E 16 links dist. a W.O. 18 in. diam. N 81 W 32 links dist.
 thence east, between Sect. 35 & 36 320 poles, cropping stony bank
 at 250 poles, to the original corner of Sect. 35, 36, 29 & 30 a
 W. Oak south 26

links dist a high
 oak N 74° E 24 links
 dist; thence north
 between 35 & 36
 (passing in a buck
 -oak and bur oak
 original gr. Sec
 corner at 141.6
 poles) 30 3/4 poles to
 a stone in a
 prairie the
 corner between Sect. 35 & 36; thence west, cropping stony
 bank at 210 poles) 320 poles to the beginning containing

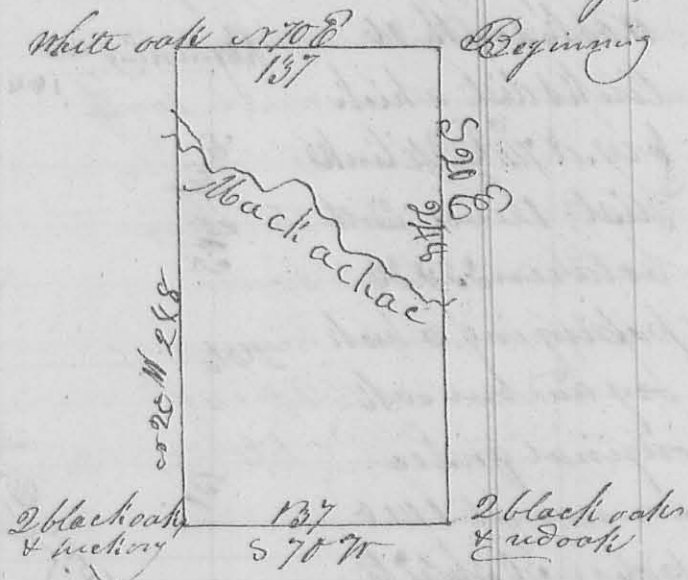


132
 68 aers. - The division line east and west begins in ¹³²
 the east line 150 poles from the S. E. corner of the sec.
 a w. oak $\text{S } 70^{\circ} \text{ W } 23^{\circ}$ links; thence west, crossing the creek
 at 158 poles 320° poles to a stake in the west line of the sec.
 The line north and south begins at a w. oak $\text{S } 83^{\circ} \text{ W } 16^{\circ}$
 links dist in the north line 164 poles from the N. W.
 corner of the sec.; thence south crossing the creek 9 times
 passing the center stake at 153 poles 304° poles to a stake
 in the south line of the sec. a w. oak $\text{S } 34^{\circ} \text{ E } 19^{\circ}$ links,
 dist. 164 poles from the S. W. corner
 Cyrus Ferris } C.C.
 Henry Kelley } C.C. James Harmon

B. Long et al. } 10th Mo., Oct. 16 1831
 N. 168 } 3

Survey N^o 168

(8258)
 Surveyed 206 aers for Benjamin Long and step
 sons, heirs of Zabud Randall; beginning at a white
 oak, where formerly stood 2 white oaks, hickory and elm
 (the hickory elm and one white oak is down), at the N. E.
 corner of Thomas Worthington's survey N^o 4497; thence
 with his east line $\text{S } 20^{\circ} \text{ E}$, crossing Machachae at 129
 poles, 248 poles to 2 black oaks and red oak, the S. E. cor-
 ner of said survey; thence $\text{S } 70^{\circ} \text{ W}$ with the south line of
 the original survey, 137 poles to 2 black oaks and hickory
 corner to George Scott's land
 thence $\text{S } 20^{\circ} \text{ W}$ (crossing
 Machachae at 268 poles)
 (a mill race at 234 poles)
 248 poles, to a white oak
 in the north line of said
 survey - thence with said
 line $\text{S } 70^{\circ} \text{ E}$ 137 poles to the
 beginning containing
 206 aers, off the east end
 of Worthington's said survey
 Jeffrey Williams } C.C.
 Thomas Wittett }



James Harmon
 C.C.