

REC'D 9-15-08 SMJ DL

# Lee Surveying and Mapping Co., Inc.

Land Surveys • Topography • Subdivisions • Construction Layout

117 N. Madriver St.  
Bellefontaine OH 43311



Phone: (937) 593-7335  
Fax: (937) 593-7444

## SHOUGH 6.493 ACRES

Lying in Section 5, Town 3, Range 13, Miami Township, Logan County, Ohio.

Being out of the Daniel P. Shough and Jean Francis Shough 16.585 acre tract as deeded and described in Official Record 26, Page 984 of the Logan County Records of Deeds and being more particularly described as follows:

Beginning on a 5/8 inch iron rod found at the southwest corner of Quail Ridge Subdivision (Plat Cabinet B, Slide 48B).

THENCE, with the south line of Quail Ridge Subdivision, S 85°-00'-56"E, a distance of 1265.38 feet to a railroad spike found on the center-line of Ohio Route 508, passing a 5/8 inch iron rod found at 1225.94 feet.

THENCE, with the center-line of Ohio Route 508 (60 feet wide), S 35°-29'-27"E, a distance of 150.00 feet to a MAG nail set.

THENCE, N 85°-00'-59"W, a distance of 39.44 feet to a 5/8 inch iron rod set on the west right-of-way of Ohio Route 508.

THENCE, with the west right-of-way of Ohio Route 508, N 35°-29'-27"W, a distance of 110.56 feet to a 5/8 inch iron rod set.

THENCE, N 85°-00'-56"W, a distance of 743.14 feet to a 5/8 inch iron rod set.

THENCE, S 04°-12'-30"W, a distance of 476.00 feet to a 5/8 inch iron rod set.

THENCE, with the north line of the Mary J. Weeks, Trustee 80 acre tract (O.R. 628, Pg. 225, Tract I), N 84°-44'-50"W, a distance of 508.00 feet to a concrete post found.

THENCE, with the east line of the Mary J. Weeks, Trustee 18.87 acre tract (O.R. 628, Pg. 225, Tract II), N 04°-12'-15"E, a distance of 503.62 feet to the point of beginning.

Containing 6.493 acres, of which 0.103 acre is within the highway right-of-way.

The basis for bearings is the center-line of Ohio Route 508, being S 35°-29'-27"E, and all other bearings are from angles and distances measured in a field survey by Lee Surveying and Mapping Co., Inc. on September 9, 2008.

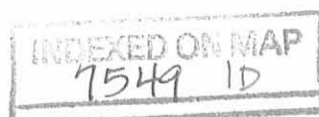


ORIGINAL STAMP IN GREEN

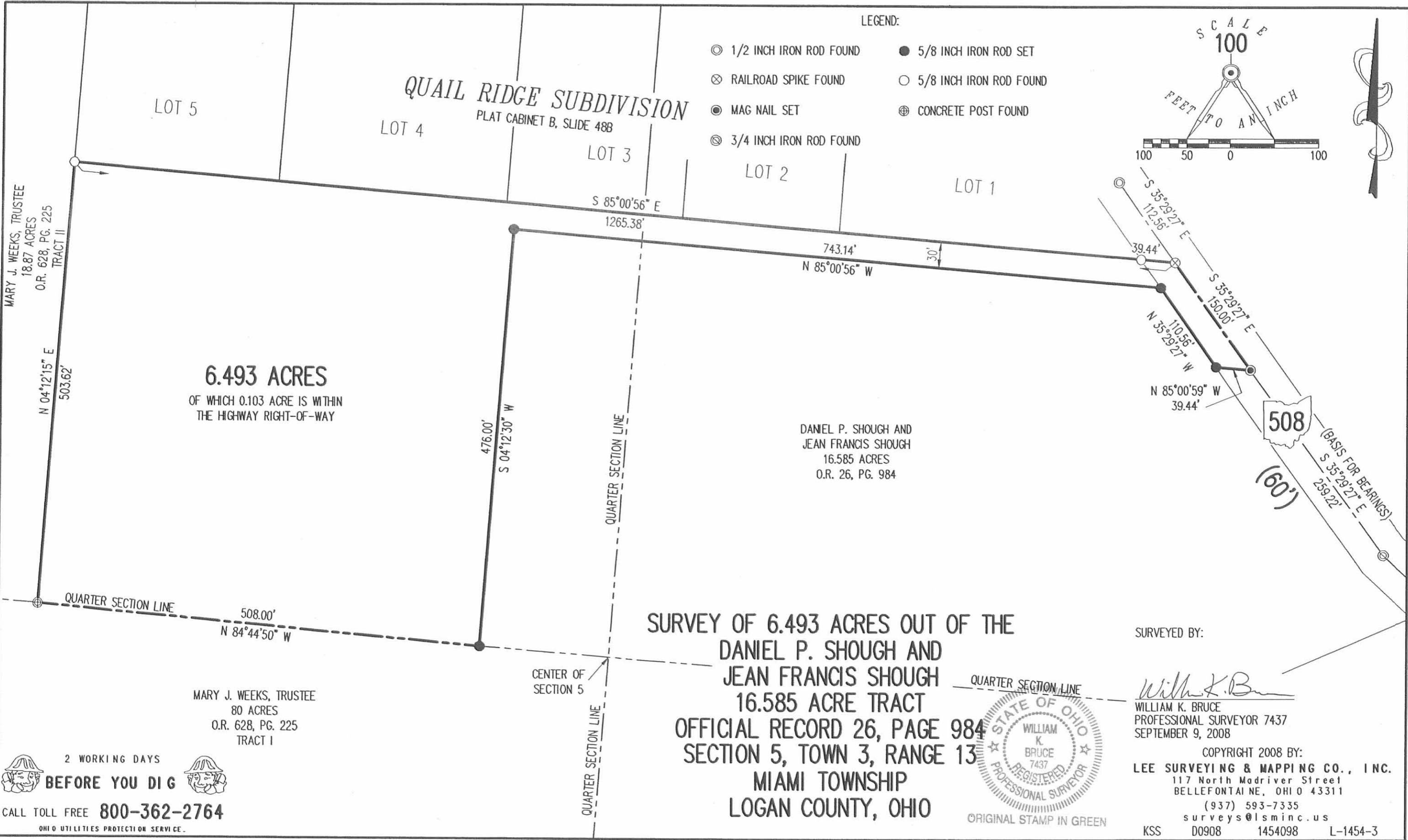
Description prepared by:

William K. Bruce  
Professional Surveyor 7437  
September 10, 2008

1454095



REC'D 9-15-08 SMOCK



**SURVEY OF 6.493 ACRES OUT OF THE  
DANIEL P. SHOUGH AND  
JEAN FRANCIS SHOUGH  
16.585 ACRE TRACT  
OFFICIAL RECORD 26, PAGE 984  
SECTION 5, TOWN 3, RANGE 13  
MIAMI TOWNSHIP  
LOGAN COUNTY, OHIO**

SURVEYED BY:

*William K. Bruce*  
WILLIAM K. BRUCE  
PROFESSIONAL SURVEYOR 7437  
SEPTEMBER 9, 2008

COPYRIGHT 2008 BY:  
**LEE SURVEYING & MAPPING CO., INC.**  
117 North Madriver Street  
BELLEFONTAINE, OHIO 43311  
(937) 593-7335  
surveys@lsmcinc.us  
KSS D0908 1454098 L-1454-3

REC'D 3-19-99 SMJ QLV

**LESLIE H. GEESLIN**

REGISTERED SURVEYOR 5248

P. O. BOX 274

RUSHSVLVANIA, OHIO 43347

TELEPHONE: (937) 468-2793

FAX: (937) 468-2080

MUELLER SURVEY

March 18, 1999

The following described real estate situated in the State of Ohio, County of Logan, Township of Miami, being part of Section 5, Town 3, Range 13, and more particularly described as follows:

Beginning at a R. R. spike found in the centerline of State Route 508 at the northeast corner of Don L. Baughman's 7.296 acre tract as described in O. R. Vol. 359 Page 628.

Thence with said Baughman's north line N. 85° 40' 58" W. 953.24 feet to a 5/8 inch iron bar found, passing a 5/8 inch iron bar found at 34.68 feet.

Thence N. 56° 22' 27" E. 107.69 feet to a 5/8 inch iron bar found.

Thence on a 120.00 foot radius curve, said curve having a central angle of 20° 12' 21", a tangent of 21.38 feet and a chord measurement of S. 43° 43' 43" E. 42.10 feet, an arc distance of 42.32 feet to a 5/8 inch iron bar set.

Thence N. 30° 20' 45" E. 49.43 feet to a 5/8 inch iron bar set.

Thence S. 59° 39' 15" E. 50.00 feet to a 5/8 inch iron bar set.

Thence S. 30° 20' 45" W. 22.78 feet to a 5/8 inch iron bar set.

Thence S. 4° 19' 20" W. 19.88 feet to a 5/8 inch iron bar set.

Thence on a 120.00 foot radius curve, said curve having a central angle of 3° 12' 12", a tangent of 3.35 feet and a chord measurement of S. 84° 04' 52" E. 6.71 feet, an arc distance of 6.71 feet to a 5/8 inch iron bar found.

Thence S. 85° 40' 58" E. 666.66 feet to a 5/8 inch iron bar found.

Thence on a 35.00 foot radius curve to the left, said curve having a central angle of 120° 06' 04", a tangent of 60.75 feet and a chord measurement of N. 34° 16' 00" E. 60.65 feet, an arc distance of 73.37 feet to a 5/8 inch iron bar found.

Thence N. 64° 12' 58" E. 30.00 feet to a magnetic nail found in the centerline of said S. R. 508.

Thence with the centerline of said S. R. 508 S. 25° 47' 02" E. 101.25 feet to the place of beginning.

Containing 0.616 acres more or less of which 0.064 acre is in the right of way of State Route 508.

The above described 0.616 acre tract being part of Don L. Baughman and Joy A. Pool's original 101.87 acre tract as described in D. B. Vol. 367 page 713.

Bearings are based on an assumed bearing (N. 85° 40' 58" W.) for the north line of Don L. Baughman's 7.296 acre tract as described in O. R. Vol. 359 Page 628 in this field survey by Leslie H. Geeslin, Reg. Surveyor 5248 on March 18, 1999.

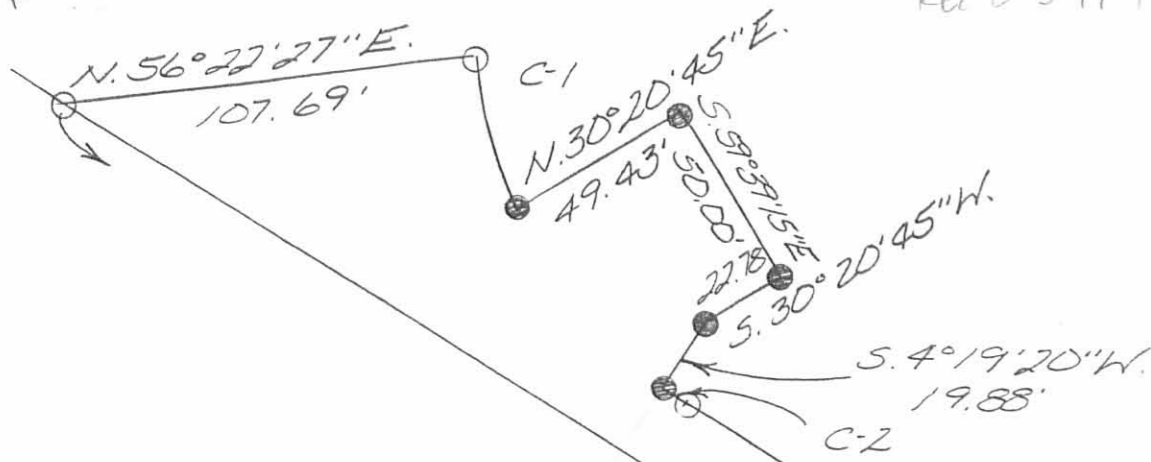
MIAMI16\MUELLER6.SAM

7549 2D

*Leslie H. Geeslin*



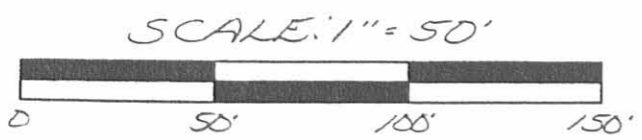
REC'D 3-19-99 SMY OKV



C-1:  
 $\Delta = 20^{\circ} 12' 21''$   
 $R = 120.00'$   
 $T = 21.38'$   
 $ARC = 42.32'$   
 $CHORD = S. 43^{\circ} 43' 43'' E. 42.10'$

C-2:  
 $\Delta = 3^{\circ} 12' 12''$   
 $R = 120.00'$   
 $T = 3.35'$   
 $ARC = 6.71'$   
 $CHORD = S. 84^{\circ} 04' 52'' E. 6.71'$

C-3:  
 $\Delta = 120^{\circ} 06' 04''$   
 $R = 35.00'$   
 $T = 60.75'$   
 $ARC = 73.37'$   
 $CHORD = N. 34^{\circ} 16' 00'' E. 60.65'$



DON L. BAUGHMAN AND JOY A. POOL  
 ORIGINAL 101.87 AC.  
 D.B. VOL. 367 PG. 713

DON L. BAUGHMAN  
 7.296 AC.  
 D.B. VOL. 359 PG. 628

666.66'

953.24'

- LEGEND
- $\Delta$  = R.R. SPIKE FOUND
  - $\square$  = MAGNETIC NAIL FOUND
  - $\circ$  = 5/8 INCH IRON BAR FOUND
  - $\bullet$  = 5/8 INCH IRON BAR SET

SURVEY OF 0.616 ACRE IN SECTION 5, TOWN 3, RANGE 13, MIAMI TOWNSHIP, LOGAN COUNTY, OHIO FOR BRAD MUELLER ON MARCH 18, 1999



Leslie H. Geeslin  
 LESLIE H. GEESLIN  
 ZULSASZLVANIA, OH  
 PH: (937) 468-2793  
 FAX: (937) 468-2080

7549 ZP

STATE ROUTE 508 (60')



REC'D 12-23-97 JML OK ✓



# Lee Surveying and Mapping Co., Inc.



Farm Surveys • Lot Surveys • Topography • Subdivisions • Construction Layout

117 NORTH MADRIVER STREET  
BELLEFONTAINE, OHIO 43311

(937) 593-7335  
FAX (937) 593-7444

## MUELLER 7.296 ACRES

Lying in Section 5, Town 3, Range 13, Miami Township, Logan County, Ohio.

Being out of the Don L. Baughman and Joy A. Pool 101.87 acre tract as deeded and described in Volume 367, Page 713 of the Logan County Records of Deeds and being more particularly described as follows:

Beginning at a 5/8 inch iron rod found at the center of Section 5 on the south line of the Daniel P. Shough 16.585 acre tract (O.R. 26, Pg. 984).

THENCE, with the south line of the said 16.585 acre tract, N 84°-13'-15" W, a distance of 653.87 feet to a concrete post found on the east line of the Ralph E. Weeks, Trustee 18.87 acre tract (O.R. 233, Pgs. 56 and 62).

THENCE, with the east line of the said 18.87 acre tract, N 4°-40'-40" E, a distance of 503.62 feet to a 5/8 inch iron rod found at the TRUE POINT OF BEGINNING.

THENCE, with the east line of the said 18.87 acre tract, N 4°-46'-17" E, a distance of 261.39 feet to a 5/8 inch iron rod set.

THENCE, S 85°-40'-58" E, a distance of 1075.24 feet to a railroad spike set on the center-line of State Route 508, passing a 5/8 inch iron rod set at 1040.56 feet.

THENCE, with the center-line of State Route 508 (60 feet wide), S 25°-47'-02" E, a distance of 231.68 feet to a 1/2 inch iron rod found at an angle in the highway.

THENCE, continuing with the center-line of State Route 508, S 35°-03'-40" E, a distance of 112.62 feet to a railroad spike found at the northeast corner of the aforementioned 16.585 acre tract.

THENCE, with the north line of the said 16.585 acre tract, N 84°-30'-00" W, a distance of 1265.23 feet to the point of beginning.

Containing 7.296 acres, of which 0.236 acre is within the right-of-way of State Route 508.

The basis for bearings is the north line of the said Daniel P. Shough 16.585 acre tract, being N 84°-30'-00" W, and all other bearings and distances are from a field survey by Leslie H. Geeslin, Professional Surveyor 5248, on December 9, 1997.

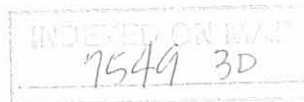
Description prepared by:

Jeffrey J. Lee  
Professional Surveyor 6359  
December 15, 1997



ORIGINAL STAMP IN GREEN

L-1454



RALPH E. WEEKS, TRUSTEE  
18.87 ACRES  
O.R. 233, PG. 56 AND 62

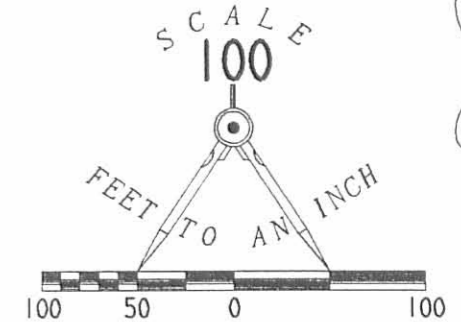
DON L. BAUGHMAN  
AND JOY A. POOL  
101.87 ACRES  
VOL. 367, PG. 713

7.296 ACRES  
OF WHICH 0.236 ACRE IS WITHIN  
THE HIGHWAY RIGHT-OF-WAY

DANIEL P. SHOUGH  
16.585 ACRES  
O.R. 26, PG. 984

SURVEY OF 7.296 ACRES OUT  
OF THE DON L. BAUGHMAN AND JOY A. POOL  
ORIGINAL 101.87 ACRE TRACT  
VOLUME 367, PAGE 713  
SECTION 5, TOWN 3, RANGE 13  
MIAMI TOWNSHIP  
LOGAN COUNTY, OHIO

NOTE:  
MAP WAS PREPARED FROM A SURVEY  
PERFORMED BY LESLIE H. GEESLIN  
PROFESSIONAL SURVEYOR 5248, ON  
DECEMBER 9, 1997



LEGEND

- 5/8" IRON ROD SET
- 5/8" IRON ROD FOUND
- ⊗ RAILROAD SPIKE SET
- ⊕ RAILROAD SPIKE FOUND
- ⊙ 1/2" IRON ROD FOUND
- ⊞ HOUSE SITES
- ⊛ CONC. POST

N 04° 46' 17" E  
261.39'

S 85° 40' 58" E  
1075.24' DRIVE

34.68'

S 25° 47' 02" E  
231.68'

1265.23'  
N 84° 30' 00" W

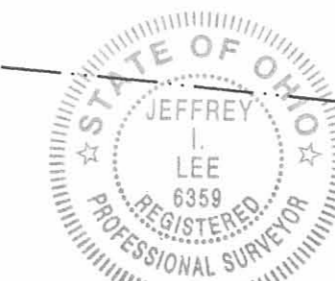
39.54'

STATE ROUTE 508 (60')

N 4° 40' 40" E  
503.62'

653.87'  
N 84° 13' 15" W

CENTER OF SECTION  
POINT OF BEGINNING



ORIGINAL STAMP IN GREEN

*Jeffrey I. Lee*  
JEFFREY I. LEE  
PROFESSIONAL SURVEYOR 6359  
DECEMBER 9, 1997

COPYRIGHT 1997 BY:  
LEE SURVEYING & MAPPING CO., INC.  
117 North Madriver Street  
BELLEFONTAINE, OHIO 43311  
(937) 593-7335

D 320 MUELLER

L-1454-3

REFERENCES

LOGAN COUNTY ENGINEER'S FILES:  
R-3113, R-4958, R-5092  
R-5592 AND R-7549

2 WORKING DAYS



CALL TOLL FREE 800-362-2764  
OHIO UTILITIES PROTECTION SERVICE.

INDEXED ON MAP  
75493P

Received 8-12-86

OK 8-13-86 C.P.

# Lee Surveying and Mapping Co.



Farm Surveys • Lot Surveys • Topography • Subdivisions • Construction Layout

855 EAST SANDUSKY AVENUE  
BELLEFONTAINE, OHIO 43311

(513) 593-5780

CLAYTON M. LEE, P.S.  
JEFFREY I. LEE, P.S.

DON BAUGHMAN, 16.585 ACRES

Lying in the north half of Section 5, T-3, R-13, Miami Township, Logan County, Ohio.

Being a part of that 101.87 acre tract in the name of Don Baughman as deeded and described in Volume 367, Page 713, Tract II of the Logan County Records of Deeds and being more particularly described as follows:

Beginning at a 5/8" iron rod set at a fence corner marking the center of Section 5, T-3, R-13 and also being the northeast corner of the Ralph Weeks 80 acre tract (Volume 210, Page 404).

THENCE, with the north line of said 80 acre tract, N 84°-13'-15" W, a distance of 653.87 feet to a concrete post marking the southeast corner of the Rockwell International 18.87 acre tract (Volume 400, Page 241).

THENCE, with the line between said 18.87 acres and the grantor's said 101.87 acres, N 4°-40'-40" E, a distance of 503.62 feet to a 5/8" iron rod.

THENCE, S 84°-30' E, a distance of 1265.26 feet to a railroad spike set on the old center-line of State Route 508 (Station 58+14.55 in county engineer's Field Book 582, Page 14).

THENCE, with the said center-line, the following 2 bearings and distances:  
S 35°-01' E, 409.42 feet to a 'PK' nail.  
S 46°-31'-10" E, 85.16 feet to a railroad spike.

THENCE, S 66°-56'-10" W, a distance of 288.24 feet to a 5/8" iron rod set 8.6 feet north of the quarter-section line.

THENCE, N 84°-56'-30" W, a distance of 684.15 feet to the point of beginning.

Containing 16.585 acres.

Prepared by:

Clayton M. Lee  
Registered Professional Surveyor No. 6181  
August 11, 1986

This description prepared from an actual field survey.



INDEXED ON MAP  
7549 40

ORIGINAL STAMP IN GREEN  
L-1454

ROCKWELL INT.  
18.87 AC.  
VOL. 400, PG. 241  
N 4°-40'-40" E  
503.62'

DON L. BAUGHMAN, 101.87 AC.  
VOL. 367, PG. 713 (TRACT II)

S 84°-30" E  
1265.26'

16.585 ACRES

COND. POST  
N 84°-13'-15" W  
653.87'

RALPH WEEKS  
80 ACRES  
VOL. 201, PG. 404

CENTER OF  
SEC. 5, T-3, R-13  
BEGINNING POINT

N 84°-56'-30" W  
684.15'

STA. 57+02 (Co. ENGR. FB. 582, PG. 14)  
FOUND 1/2" IRON ROD  
39.46'

STA. 58+14.55  
SET RR SPIKE  
BEGIN POINT

BASIS FOR BEARINGS ← SCALE  
1" = 200'

'PK' 62+24.7  
32.70'  
SET RR SPIKE

S 66°-56'-10" W  
288.24'

1/4 SEC. LINE

S 46°-31'-10" E  
1000.00'  
STATE ROUTE 508

SURVEY OF 16.585 ACRES OUT OF THE  
DON L. BAUGHMAN 101.87 ACRES (VOL. 367, PG. 713, TRACT II)  
IN THE N 1/2 OF SEC. 5, T-3, R-13  
MIAMI TOWNSHIP, LOGAN COUNTY, OHIO

By: *Jeffrey I. Lee*  
JEFFREY I. LEE  
REG. PROF. SURVEYOR 6359  
AUG. 7, 1986



ORIGINAL STAMP IN GREEN

L-1454-4

INDEXED ON MAP  
75494P



7-11-13

# Lee Surveying and Mapping Co., Inc.



Land Surveys • Topography • Subdivisions • Construction Layout

117 N. Madriver St.  
Bellefontaine OH 43311



Phone: (937) 593-7335  
Fax: (937) 593-7444  
surveys@lsminc.us

## SHOUGH 1.505 ACRES

Lying in Section 5, Town 3, Range 13, Miami Township, Logan County, Ohio.

Being out of the Daniel P. Shough and Jean Francis Shough 16.585 acre tract as deeded and described in Official Record 26, Page 984 of the Logan County Records of Deeds and being more particularly described as follows:

Commencing on a 5/8 inch iron rod found on the west right-of-way of Ohio Route 508 and being the southeast corner of Lot 1 of Quail Ridge Subdivision (Plat Cabinet B, Slide 48B).

THENCE, with the south line of Lot 1 extended, S 85°-00'-56"E, a distance of 39.44 feet to a railroad spike found on the center-line of Ohio Route 508.

THENCE, with the center-line of Ohio Route 508 (60 feet wide), S 35°-29'-27"E, a distance of 150.00 feet to a MAG nail found at the TRUE POINT OF BEGINNING.

THENCE, with the center-line of Ohio Route 508, S 35°-29'-27"E, a distance of 224.93 feet to a MAG nail set.

THENCE, S 52°-57'-28"W, a distance of 136.23 feet to a 5/8 inch iron rod set, passing a 5/8 inch iron rod set at 30.01 feet.

THENCE, S 78°-48'-19"W, a distance of 121.16 feet to a 5/8 inch iron rod set.

THENCE, N 06°-02'-30"W, a distance of 160.03 feet to a 5/8 inch iron rod set.

THENCE, S 57°-09'-18"W, a distance of 92.36 feet to a 5/8 inch iron rod set.

THENCE, N 08°-58'-34"W, a distance of 201.60 feet to a 5/8 inch iron rod set.

THENCE, S 85°-00'-56"E, a distance of 223.75 feet to the point of beginning, passing a 5/8 inch iron rod found at 184.31 feet.

Containing 1.505 acres, of which 0.164 acre is within the highway right-of-way.

Property is subject to any and all previous easements and rights-of-way of record.

The basis for bearings is the center-line of Ohio Route 508, being S 35°-29'-27"E, and all other bearings are from angles and distances measured in a field survey by Lee Surveying and Mapping Co., Inc. on July 5, 2013.

Description prepared by:

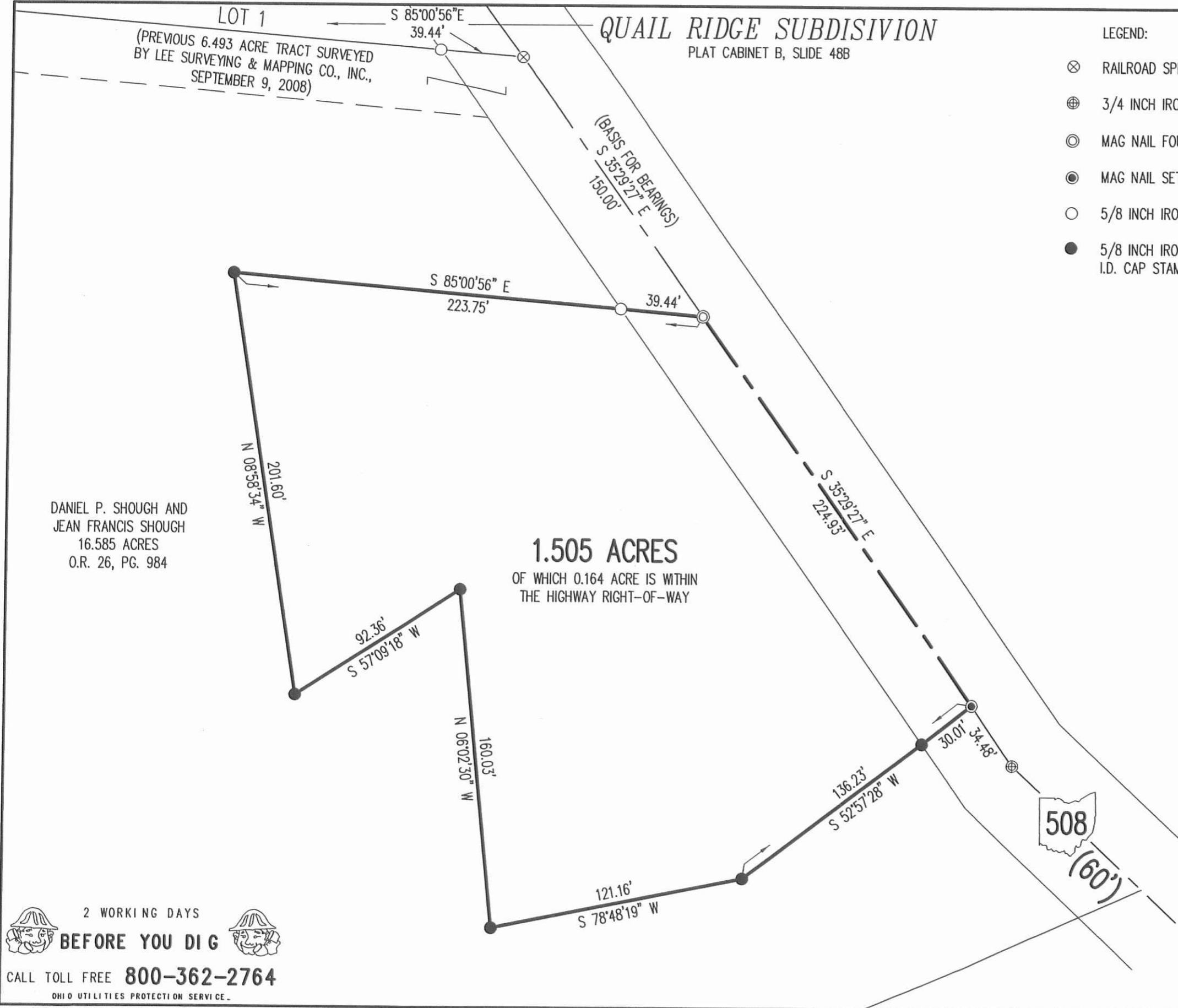
*William K. Bruce*

William K. Bruce  
Professional Surveyor 7437  
July 5, 2013

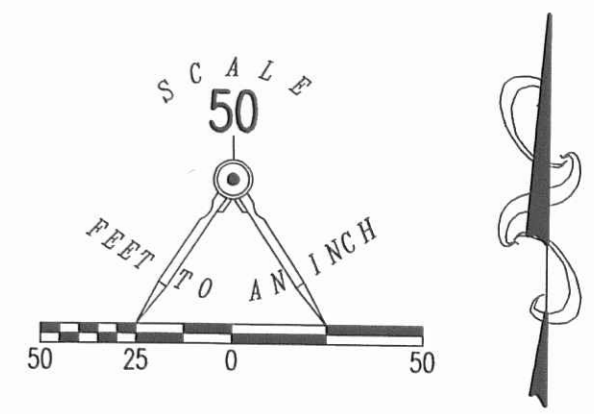


14540613

7-11-13  
**APPROVED**



- LEGEND:
- ⊗ RAILROAD SPIKE FOUND
  - ⊕ 3/4 INCH IRON ROD FOUND
  - ⊙ MAG NAIL FOUND
  - MAG NAIL SET
  - 5/8 INCH IRON ROD FOUND
  - 5/8 INCH IRON ROD SET WITH PLASTIC I.D. CAP STAMPED "LSM 7437"



**SURVEY OF 1.505 ACRES OUT OF THE  
 DANIEL P. SHOUGH AND  
 JEAN FRANCIS SHOUGH  
 16.585 ACRE TRACT  
 OFFICIAL RECORD 26, PAGE 984  
 SECTION 5, TOWN 3, RANGE 13  
 MIAMI TOWNSHIP  
 LOGAN COUNTY, OHIO**

DANIEL P. SHOUGH AND  
 JEAN FRANCIS SHOUGH  
 16.585 ACRES  
 O.R. 26, PG. 984

SURVEYED BY:  
  
 WILLIAM K. BRUCE  
 PROFESSIONAL SURVEYOR 7437  
 JULY 5, 2013



COPYRIGHT 2013 BY:  
**LEE SURVEYING & MAPPING CO., INC.**  
 117 North Madriver Street  
 BELLEFONTAINE, OHIO 43311  
 (937) 593-7335  
 WWW.LSMINC.US  
 surveys@lsminc.us  
 KSS D0613 14540613 L-1454-3

2 WORKING DAYS  
**BEFORE YOU DIG**  
 CALL TOLL FREE **800-362-2764**  
 OHIO UTILITIES PROTECTION SERVICE.

INDEXED ON MAP  
 7549 SP

APPROVED 5-21-14

QUAIL RIDGE DRIVE (60 FEET WIDE)

BASIS FOR BEARINGS  
S 85°40'58" E  
200.02'

N 04°19'02" E  
231.66'

LOT 4

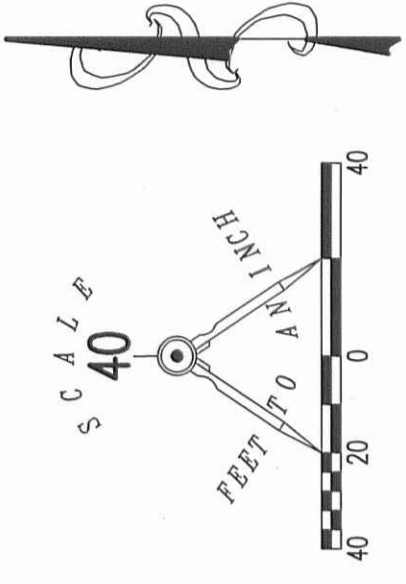
LOT 3

S 04°19'02" W  
235.79'

LOT 2

200.06'  
N 84°30'00" W

DANIEL P. SHOUGH  
16.585 ACRE TRACT  
O.R. 26, PG. 984



LEGEND

● 5/8 INCH IRON ROD SET WITH PLASTIC I.D. CAP STAMPED "LSM7437"

RETRACEMENT SURVEY OF  
LOT 3  
QUAIL RIDGE SUBDIVISION  
PLAT CABINET B, SLIDE 48B  
SECTION 5, TOWN 3, RANGE 13  
MIAMI TOWNSHIP  
LOGAN COUNTY, OHIO

SURVEYED BY:

*William K. Bruce*  
WILLIAM K. BRUCE  
PROFESSIONAL SURVEYOR 7437  
MAY 16, 2014



COPYRIGHT 2014 BY:  
LEE SURVEYING & MAPPING CO., INC.  
117 North Madison Street  
BELLEFONTAINE, OHIO 43311  
(937) 593-7335  
WWW.LSMINC.US

surveys@lsminc.us  
ADW D0414 57310414 L-5731-3



2 WORKING DAYS

BEFORE YOU DIG

CALL TOLL FREE 800-362-2764

OHIO UTILITIES PROTECTION SERVICE



10-15-14  
**Lee Surveying and Mapping Co., Inc.**



Land Surveys • Topography • Subdivisions • Construction Layout

117 N. Madriver St.  
Bellefontaine OH 43311



Phone: (937) 593-7335  
Fax: (937) 593-7444

**SHOUGH  
5.886 ACRES**

Lying in Section 5, Town 3, Range 13, Miami Township, Logan County, Ohio.

Being out of the Daniel P. Shough and Jean Francis Shough 16.585 acre tract as deeded and described in Official Record 26, Page 984 of the Logan County Records of Deeds and being more particularly described as follows:

Beginning on a 5/8 inch iron rod found at the southwest corner of Quail Ridge Subdivision (Plat Cabinet B, Slide 48B).

THENCE, with the south line of Quail Ridge Subdivision, S 85°-00'-56"E, a distance of 508.00 feet to a point.

THENCE, S 04°-12'-30"W, a distance of 506.00 feet to a 5/8 inch iron rod set on the south line of the northwest quarter of Section 5, passing a 5/8 inch iron rod set at 30.00 feet.

THENCE, with the south line of the northwest quarter of Section 5 and the north line of the Bruce E. Weeks 80 acre tract (O.R. 974, Pg. 19, Tract I), N 84°-44'-50"W, a distance of 508.00 feet to a concrete post found.

THENCE, with the east line of the Patricia S. Furrow 18.87 acre tract (O.R. 982, Pg. 380), N 04°-12'-15"E, a distance of 503.62 feet to the point of beginning.

Containing 5.886 acres.

This parcel is to be attached to an adjoining tract of land and is not to be used as a separate and independent parcel.

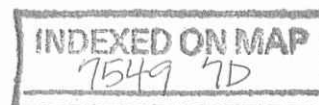
The basis for bearings is the center-line of Ohio Route 508, being S 35°-29'-27"E, and all other bearings are from angles and distances measured in a field survey by Lee Surveying and Mapping Co., Inc. on September 9, 2008, revised October 14, 2014.



Description prepared by:

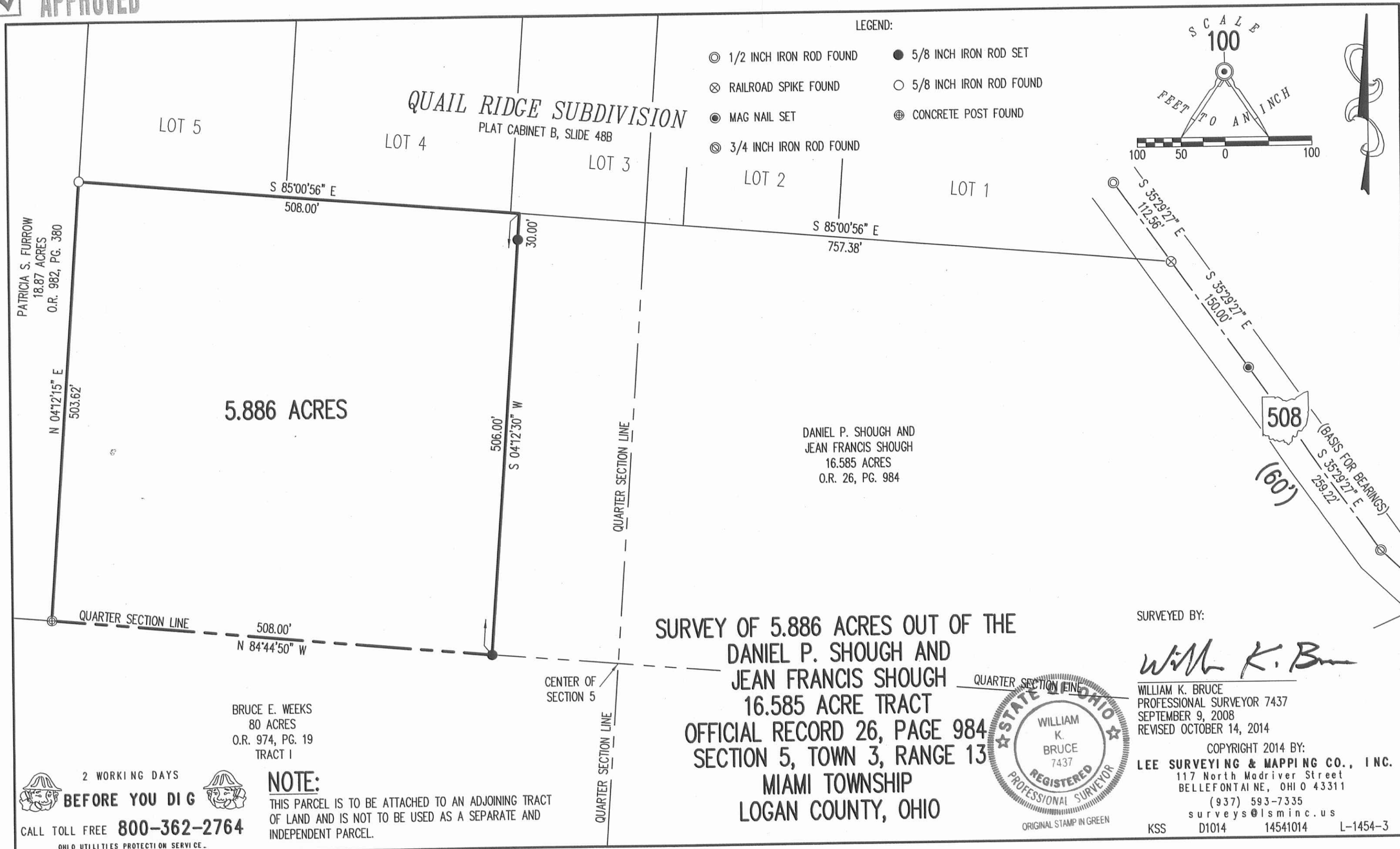
William K. Bruce  
Professional Surveyor 7437  
October 14, 2014

14541014



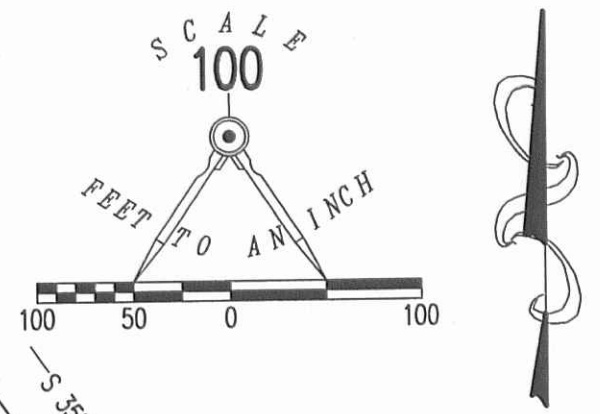
10-15-14

**APPROVED**



LEGEND:

- ⊙ 1/2 INCH IRON ROD FOUND
- ⊗ RAILROAD SPIKE FOUND
- 5/8 INCH IRON ROD SET
- 5/8 INCH IRON ROD FOUND
- ⊙ MAG NAIL SET
- ⊙ 3/4 INCH IRON ROD FOUND
- ⊕ CONCRETE POST FOUND



5.886 ACRES

DANIEL P. SHOUGH AND  
 JEAN FRANCIS SHOUGH  
 16.585 ACRES  
 O.R. 26, PG. 984

**SURVEY OF 5.886 ACRES OUT OF THE  
 DANIEL P. SHOUGH AND  
 JEAN FRANCIS SHOUGH  
 16.585 ACRE TRACT  
 OFFICIAL RECORD 26, PAGE 984  
 SECTION 5, TOWN 3, RANGE 13  
 MIAMI TOWNSHIP  
 LOGAN COUNTY, OHIO**

SURVEYED BY:

*William K. Bruce*

WILLIAM K. BRUCE  
 PROFESSIONAL SURVEYOR 7437  
 SEPTEMBER 9, 2008  
 REVISED OCTOBER 14, 2014



COPYRIGHT 2014 BY:  
**LEE SURVEYING & MAPPING CO., INC.**  
 117 North Madriver Street  
 BELLEFONTAINE, OHIO 43311  
 (937) 593-7335  
 surveys@lsmcinc.us  
 KSS D1014 14541014 L-1454-3

BRUCE E. WEEKS  
 80 ACRES  
 O.R. 974, PG. 19  
 TRACT I

**NOTE:**  
 THIS PARCEL IS TO BE ATTACHED TO AN ADJOINING TRACT  
 OF LAND AND IS NOT TO BE USED AS A SEPARATE AND  
 INDEPENDENT PARCEL.

2 WORKING DAYS  
**BEFORE YOU DIG**  
 CALL TOLL FREE **800-362-2764**  
 OHIO UTILITIES PROTECTION SERVICE.

INDEXED ON MAP  
 7549 7P

6-22-17 APPROVED  
**Lee Surveying and Mapping Co., Inc.**

Land Surveys • Topography • Subdivisions • Construction Layout

117 N. Madriver St.  
Bellefontaine OH 43311



Phone: (937) 593-7335  
Fax: (937) 593-7444  
surveys@lsminc.us

**SHOUGH  
6.561 ACRES**

Lying in Section 5, Town 3, Range 13, Miami Township, Logan County, Ohio.

Being out of the Daniel P. Shough and Jean Francis Shough 16.585 acre tract as deeded and described in Official Record 26, Page 984 of the Logan County Records of Deeds and being more particularly described as follows:

Beginning on a railroad spike found on the intersection of the center-line of Ohio Route 508 and the south line of Quail Ridge Subdivision (Plat Cabinet B, Slide 48B).

THENCE, with the center-line of Ohio Route 508 (60 feet wide), S 35°-29'-27"E, a distance of 150.00 feet to a MAG nail found.

THENCE, N 85°-00'-56"W, a distance of 223.75 feet to a 5/8 inch iron rod set, passing a 5/8 inch iron rod found at 39.44 feet.

THENCE, S 08°-58'-34"E, a distance of 201.60 feet to a 5/8 inch iron rod set.

THENCE, S 78°-43'-34"W, a distance of 700.81 feet to a 5/8 inch iron rod set.

THENCE, with the east line of the Charles A. Lump 5.886 acre tract (O.R. 1163, Pg. 791), N 04°-12'-30"E, a distance of 506.00 feet to a point, passing a 5/8 inch iron rod set as reference at 476.00 feet.

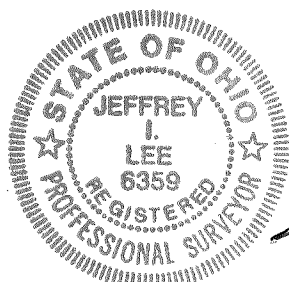
THENCE, with the south line of Quail Ridge Subdivision, S 85°-00'-56"E, a distance of 757.38 feet to the point of beginning, passing a 5/8 inch iron rod found at 717.94 feet.

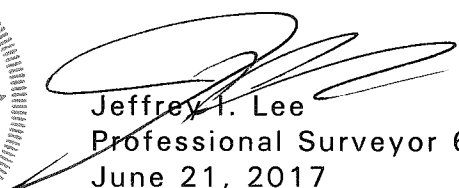
Containing 6.561 acres, of which 0.103 acre is within the highway right-of-way.

Property is subject to any and all previous easements and rights-of-way of record.

The basis for bearings is the center-line of Ohio Route 508, being S 35°-29'-27"E, and all other bearings are from angles and distances measured in a field survey by Lee Surveying and Mapping Co., Inc. on July 5, 2013, Revised June 21, 2017 to create this tract.

Description prepared by:

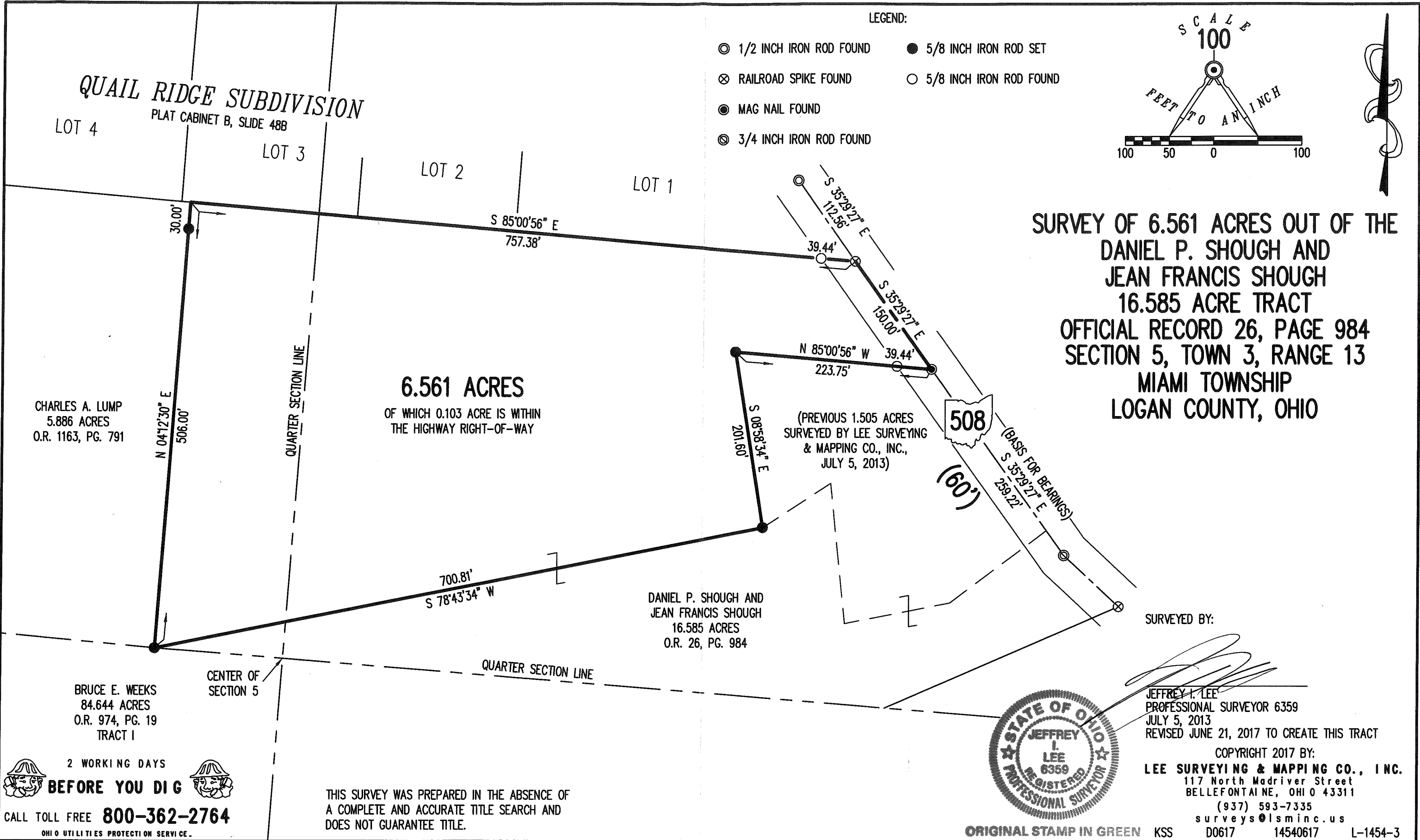


  
Jeffrey I. Lee  
Professional Surveyor 6359  
June 21, 2017

14540617

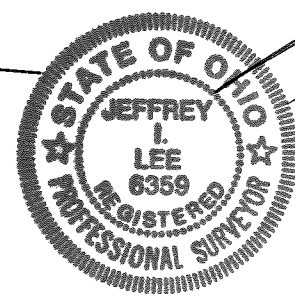
ORIGINAL STAMP IN GREEN





**SURVEY OF 6.561 ACRES OUT OF THE  
 DANIEL P. SHOUGH AND  
 JEAN FRANCIS SHOUGH  
 16.585 ACRE TRACT  
 OFFICIAL RECORD 26, PAGE 984  
 SECTION 5, TOWN 3, RANGE 13  
 MIAMI TOWNSHIP  
 LOGAN COUNTY, OHIO**

SURVEYED BY:  
  
 JEFFREY I. LEE  
 PROFESSIONAL SURVEYOR 6359  
 JULY 5, 2013  
 REVISED JUNE 21, 2017 TO CREATE THIS TRACT



COPYRIGHT 2017 BY:  
**LEE SURVEYING & MAPPING CO., INC.**  
 117 North Madriver Street  
 BELLEFONTAINE, OHIO 43311  
 (937) 593-7335  
 surveys@lsminc.us  
 ORIGINAL STAMP IN GREEN    KSS    D0617    14540617    L-1454-3

2 WORKING DAYS  
**BEFORE YOU DIG**  
 CALL TOLL FREE **800-362-2764**  
 OHIO UTILITIES PROTECTION SERVICE

THIS SURVEY WAS PREPARED IN THE ABSENCE OF  
 A COMPLETE AND ACCURATE TITLE SEARCH AND  
 DOES NOT GUARANTEE TITLE.

INDEXED ON MAP  
 7549 8

# QUAIL RIDGE SUBDIVISION

SECTION 5, TOWN 3, RANGE 13

MIAMI TOWNSHIP, LOGAN COUNTY, OHIO

Don L. Baughman and Joy A. Pool  
Original 101.87 Acre Tract  
Volume 367 Page 713

Don L. Baughman  
0.616 Acre Tract  
O.R. Vol. 409 Page 741

Don L. Baughman  
7.296 Acre Tract  
O.R. Vol. 359 Page 628

Daniel P. Shough  
16.585 Acres  
O.R. Vol. 26, Page 984

### LEGEND

- = 5/8" Iron Bar Set
- = 5/8" Iron Bar Found
- = Railroad Spike Found
- = 1/2" Iron Bar Found
- = Railroad Spike Set
- △ = Mag Nail Set

### DEDICATION

Know all men by these presents that Don L. Baughman, owner of the land indicated on the accompanying plat, has authorized the platting thereof and so hereby dedicate the streets to public use forever.

*Anna C. Furrow*  
Witness

*Don L. Baughman*  
Owner

STATE OF OHIO  
COUNTY OF LOGAN

Before me a notary public in and for said County personally came Don L. Baughman, who acknowledged the signing of the foregoing instrument to be his voluntary act and deed for the uses and purposes therein expressed.

In witness whereof, I have hereunto set my hand and affixed my official seal this 26<sup>th</sup> day of August, 19 99.

By Anna C. Furrow Notary Public

### APPROVAL

Plat pre-approved Jon C. Hino 7-30-99

Plat check Jon C. Hino 2-29-2000

The within streets are hereby approved and accepted for public maintenance by resolution no. \_\_\_\_\_ recorded in Logan County Commissioners Journal \_\_\_\_\_ on this the \_\_\_\_\_ day of \_\_\_\_\_, 19 \_\_\_\_\_.

*George W. Clayton*

*Russell Smythe*

*John Baylis*  
Logan County Commissioners

Reviewed this 3 day of Mar, 19 2000

Ron Furrow  
Chairman, Township Trustees

Approved this 24<sup>th</sup> day of January, 2000

*Janak K. Geeslin*  
Logan County Engineer

Approved this 24<sup>th</sup> day of January, 2000

*William A. Vukobratovic*  
Logan County Health Dept.

Transferred this 2nd day of March, 2000

*Michael E. Hines*  
Auditor, Logan County, Ohio

Recorded in Plat Cabinet B, Slide 48B.

Received for record at 9:25 O'Clock A.M. this 3rd day of March, 2000.

*Carolyn Collins*  
Recorder, Logan County, Ohio

Approved this 13<sup>th</sup> day of JANUARY, 2000

*Gregg A. Hanna*  
Chairman, L.U.C. Planning Commission

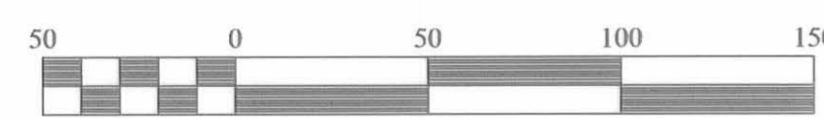
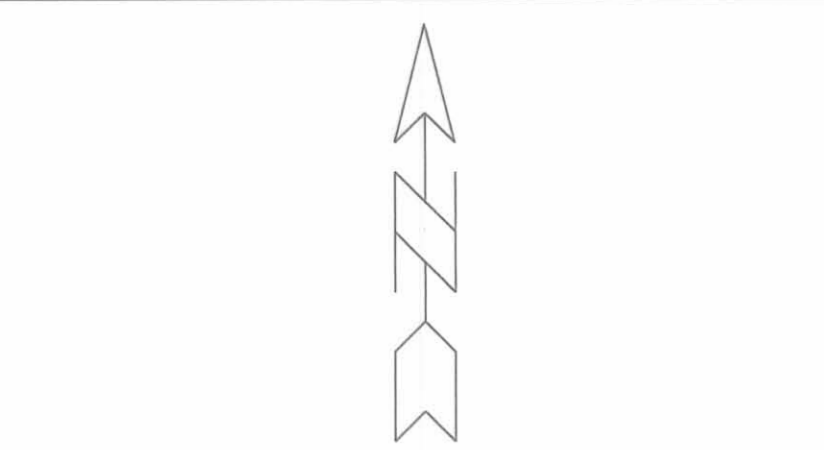
### SURVEYORS CERTIFICATE

The accompanying plat represents a subdivision of land in Section 5, Town 3, Range 13, Miami Township, Logan County, Ohio. The tract has an area of 7.912 acres of which 6.319 acres are in lots (6.298 acres from 7.296 acre tract and 0.021 acre from 0.616 acre tract), 1.593 acres in Quail Ridge Drive and State Route 508 (0.998 acre from 7.296 acre tract and 0.595 acre from 0.616 acre tract). All measurements are in feet and decimals of a foot. All measurements on curves are arc distances.

I hereby certify that the accompanying plat is a correct representation of Quail Ridge Subdivision as surveyed in January 1999.

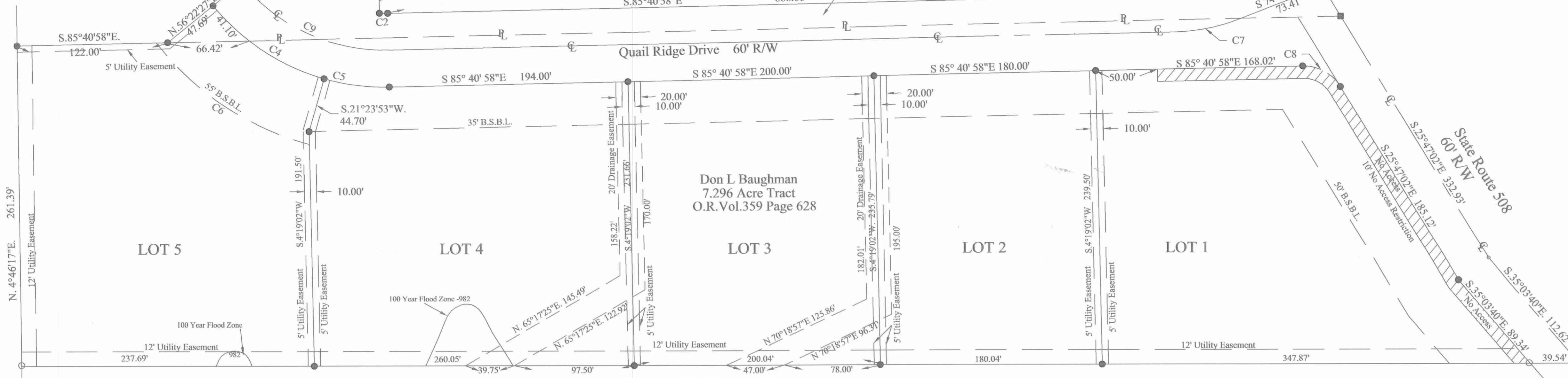
All monuments and iron bars as shown hereon have been or will be set as part of work that surety is posted for.

*Leslie H. Geeslin* 7-29-99  
Leslie H. Geeslin P.S. #5248 Date



Scale 1" = 50'

Ralph E. Weeks Trustee  
18.87 Acres  
O.R. Vol. 233, Page 62



**DESCRIPTION**  
The following described real estate situated in the State of Ohio, County of Logan, Township of Miami, being part of Section 5, Town 3 Range 13 and more particularly described as follows:

Beginning at a R. R. spike found in the centerline of State Route 508 at the northeast corner of Daniel P. Shough, et al's 16.585 acre tract as described in O. R. Vol. 26 page 984.

Thence with said Shough's north line N. 84° 30' 00" W. 1265.23 feet to a 5/8 inch iron bar found in the east line of Ralph E. Weeks, Trustee's 18.87 acre tract as described in O. R. Vol. 233 Page 62, passing a 5/8 inch iron bar found at 39.54 feet.

Thence with said Weeks' east line N. 4° 46' 17" E. 261.39 feet to a 5/8 inch iron bar set at the northwest corner of Don L. Baughman's 7.296 acre tract as described in O. R. Vol. 359 Page 628 and the southeast corner of Don L. Baughman and Joy A. Pool's 101.870 acre tract as described in D. B. Vol. 367 page 713.

Thence with the north line of said 7.296 acre tract and the south line of said 101.870 acre tract S. 85° 40' 58" E. 122.00 feet to a 5/8 inch iron bar set at the northwest corner of said Baughman's 0.616 acre tract as described in O. R. Vol. 409 Page 741.

Thence with the north line of said 0.616 acre tract and the south line of said 101.870 acre tract the following ten courses:

1. N. 56° 22' 27" E. 107.69 feet to a 5/8 inch iron bar set.
  2. on a 120.00 foot radius curve to the left, having a central angle of 20° 12' 21", a tangent of 21.38 feet and a chord of S. 43° 43' 43" E. 42.10 feet, an arc distance of 42.32 feet to a 5/8 inch iron bar set.
  3. N. 30° 20' 45" E. 49.43 feet to a 5/8 inch iron bar set.
  4. S. 59° 39' 15" E. 50.00 feet to a 5/8 inch iron bar set.
  5. S. 30° 20' 45" W. 22.78 feet to a 5/8 inch iron bar set.
  6. S. 4° 19' 20" W. 19.88 feet to a 5/8 inch iron bar set.
  7. on a 120.00 foot radius curve, said curve having a central angle of 3° 12' 12", a tangent of 3.35 feet and a chord measurement of S. 84° 04' 52" E. 6.71 feet, an arc distance of 6.71 feet to a 5/8 inch iron bar set.
  8. S. 85° 40' 58" E. 666.66 feet to a 5/8 inch iron bar set.
  9. on a 35.00 foot radius curve to the left, having a central angle of 120° 06' 04", a tangent of 60.75 feet and chord of N. 34° 16' 00" E. 60.65 feet, an arc distance of 73.37 feet to a 5/8 inch iron bar set.
  10. N. 64° 12' 58" E. 30.00 feet to a magnetic nail set in the centerline of said S. R. 508.
- Thence with the centerline of said S. R. 508 S. 25° 47' 02" E. 332.93 feet to a 1/2 inch iron bar found.
- Thence again with the centerline of said S. R. 508 S. 35° 03' 40" E. 112.62 feet to the place of beginning.
- Containing 7.912 acres more or less.

The above described 7.912 acre tract being all (7.296 ac.) of Don L. Baughman's 7.296 acre tract as described in O. R. Vol. 359 Page 628 and all (0.616 ac.) of Don L. Baughman's 0.616 acre tract as described in O. R. Vol. 409 Page 741.

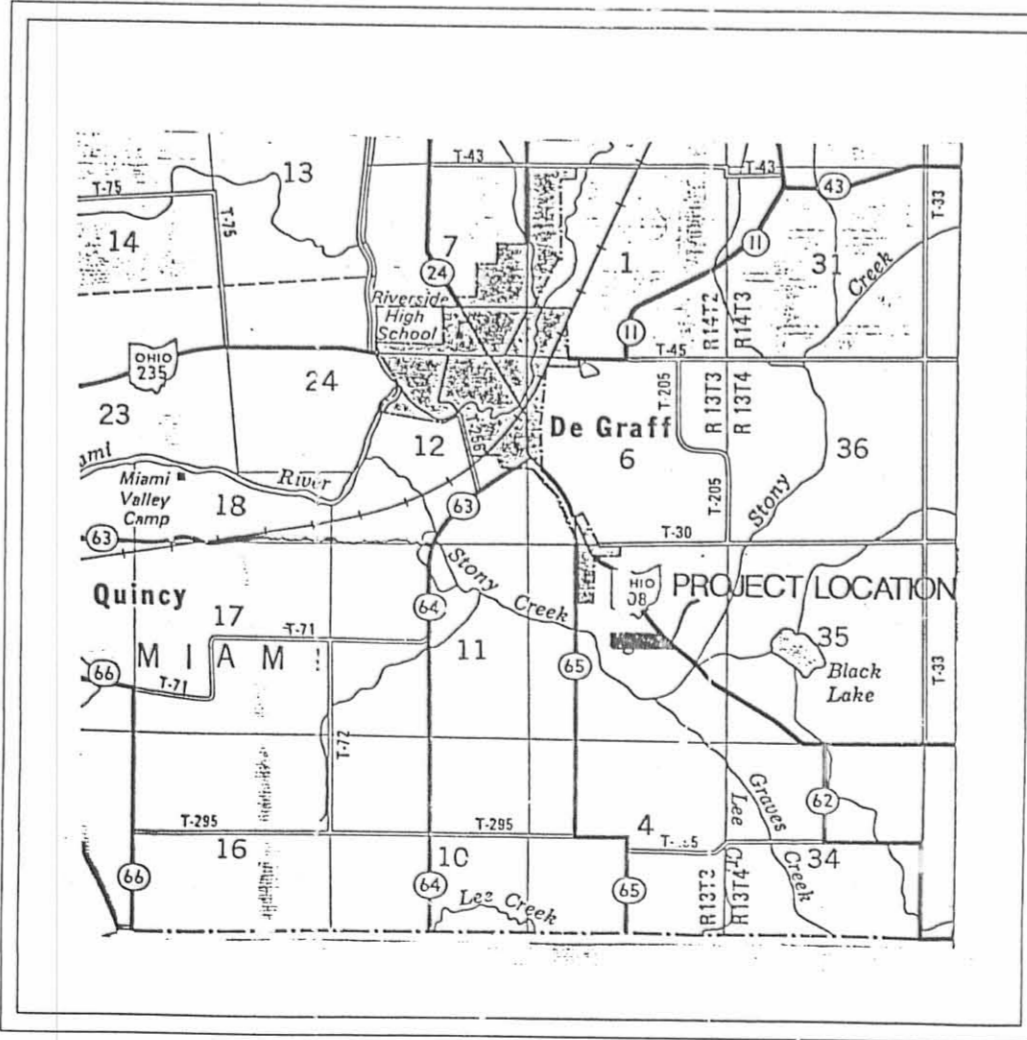
Bearings are based on an assumed bearing (N. 84° 30' 00" W.) for the north line of Daniel P. Shough's 16.585 acre tract as described in O. R. Vol. 26 Page 984 in this description prepared on April 7, 1999 from a field survey by Leslie H. Geeslin, Reg. Surveyor 5248 in January, 1999

### CURVE DATA

- C1:  
Δ = 20°12'21"  
R = 120.00'  
T = 21.38'  
Arc Length = 42.32'  
Chord = S.43°43'43"E. 42.10'
- C2:  
Δ = 3°12'12"  
R = 120.00'  
T = 3.35'  
Arc Length = 6.71'  
Chord = S.84°04'52"E. 6.71'
- C3:  
Δ = 120°06'04"  
R = 35.00'  
T = 60.75'  
Arc Length = 73.37'  
Chord = N.34°16'00"E. 60.65'
- C4:  
Δ = 34°58'35"  
R = 180.00'  
T = 56.71'  
Arc Length = 109.88'  
Chord = S.51°06'50"E. 108.18'
- C5:  
Δ = 17°04'51"  
R = 180.00'  
T = 27.03'  
Arc Length = 53.66'  
Chord = S.77°08'33"E. 53.46'
- C6:  
Δ = 37°07'26"  
R = 235.00'  
T = 78.91'  
Arc Length = 152.26'  
Chord = S. 50°48'38"E. 149.61'
- C7:  
Δ = 20°06'04"  
R = 150.00'  
T = 26.59'  
Arc Length = 52.62'  
Chord = N.84°16'00"E. 52.35'
- C8:  
Δ = 59°53'56"  
R = 35.00'  
T = 20.17'  
Arc Length = 36.59'  
Chord = S.55°44'00"E. 34.95'
- C9:  
Δ = 52°03'25"  
R = 150.00'  
T = 73.25'  
Arc Length = 136.29'  
Chord = S.59°39'15"E. 131.65'

- RESTRICTIONS:**
1. LAND USE: The lots within Quail Ridge Subdivision shall be used for single family residential purposes only.
  2. MINIMUM SIZE: Each dwelling constructed shall have a minimum living area of 1600 square feet, not to include basements, breezeways, or garages.
  3. CONSTRUCTION TYPE: No mobile homes, trailers, modular or prefabricated homes shall be permitted.
  4. LOT SPLIT: No lot shall be split, divided or subdivided for sale, resale, gift, transfers or otherwise, so as to create a new lot.
  5. TRADE OR COMMERCIAL ACTIVITY BARRED: No trade or commercial activity shall be conducted upon any lot, nor shall anything be done thereon which may become an annoyance or nuisance to any of the owners of any said lot in Quail Ridge Subdivision.
  6. VEHICLES NOT IN USE: No automobile or motor-driven vehicle shall be left upon any lot for a period longer than 30 days, within a 90 day period, in a condition wherein it is not able to be operated upon the public highway. After such period, the vehicle shall be considered a nuisance and detrimental to the welfare to the above described real estate and shall be removed therefrom.
  7. GARAGES AND OUTBUILDINGS: Only one or two car garages shall be permitted. No other permanent outbuildings are to be erected on any lot in said Quail Ridge Subdivision.
  8. No permanent structures or planting, etc. shall be permitted within the easement areas.
  9. No Access Restriction: Lot No.1 has a no access restriction along the east line and part of the north line.

The base flood elevation for this area is 982 feet as determined by the Federal Flood Study for Stony and Bokengehalas Creek of July, 1987. The minimum required first floor elevation of buildings on lots 4 and 5 in this subdivision is 984 feet.



VICINITY MAP  
Scale 1"=1Mile(5280')

**LOTS**  
5 proposed single family with on site sewage disposal

**EASEMENTS**  
Drainage Easements shall be as shown on the plat. Utility Easements are 12' along all rear lot lines and 5' along all side lot lines.

**ZONING**  
Existing U-1

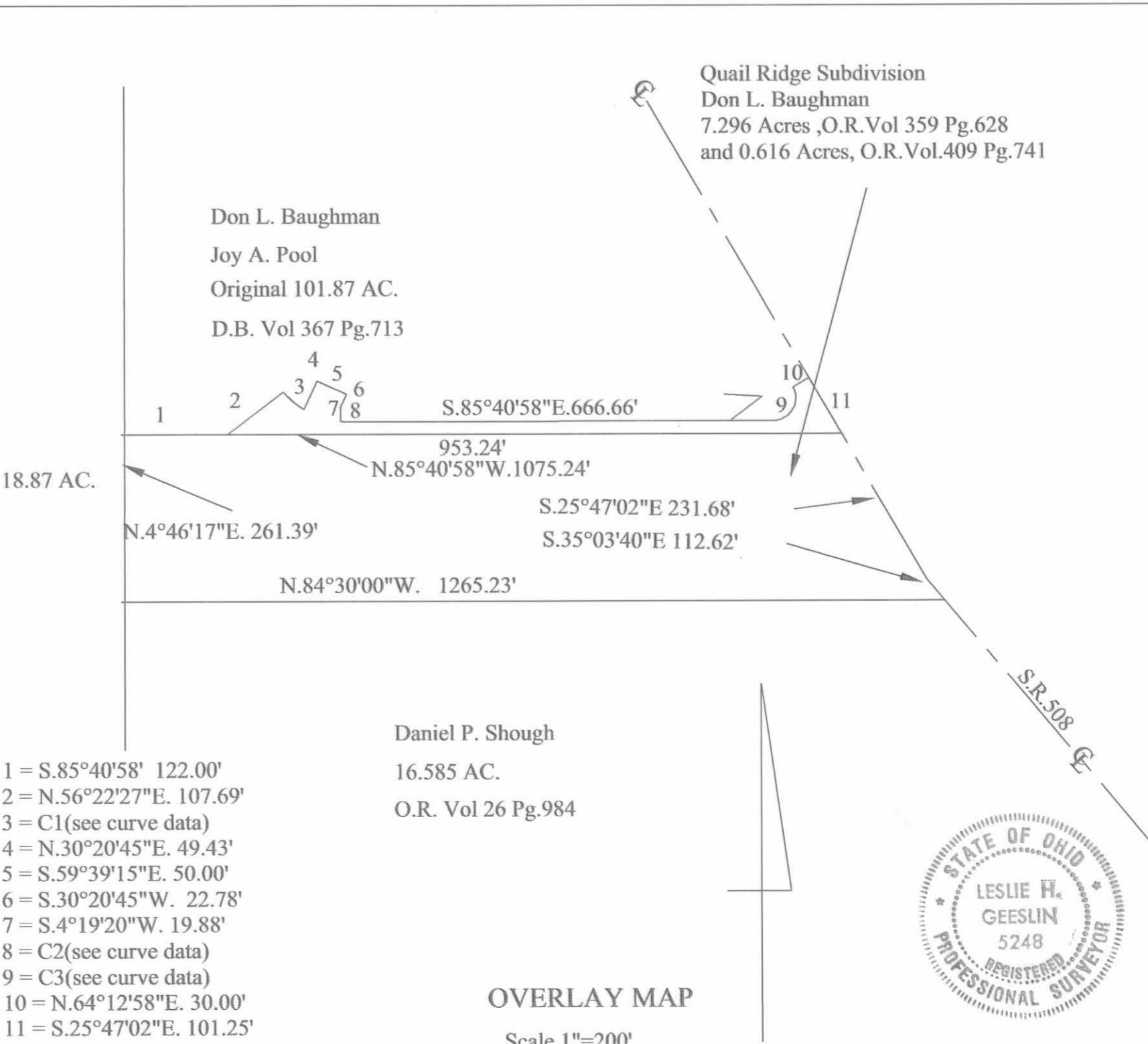
**Date of Survey**  
January 1999

**Developer:**  
Brad Mueller  
P.O. Box 542  
DeGraff, Ohio 43318  
(937)585-4585

**Surveyor:**  
Geeslin Surveying  
Les Geeslin, P.S.  
218 S. Sandusky St.  
Rushsylvania, Ohio 43347  
(937)468-2793

**Owners:**  
Don L. Baughman  
7245 TR 295  
De Graff, Ohio 43318

**Engineer:**  
The M & K Engineering Co.  
Michael W. Bow, P.E.  
1691 T.R.31 N.  
Bellefontaine, Ohio 43311  
(937)592-2697



Daniel P. Shough  
16.585 AC.  
O.R. Vol 26 Pg.984

OVERLAY MAP  
Scale 1"=200'



2002819